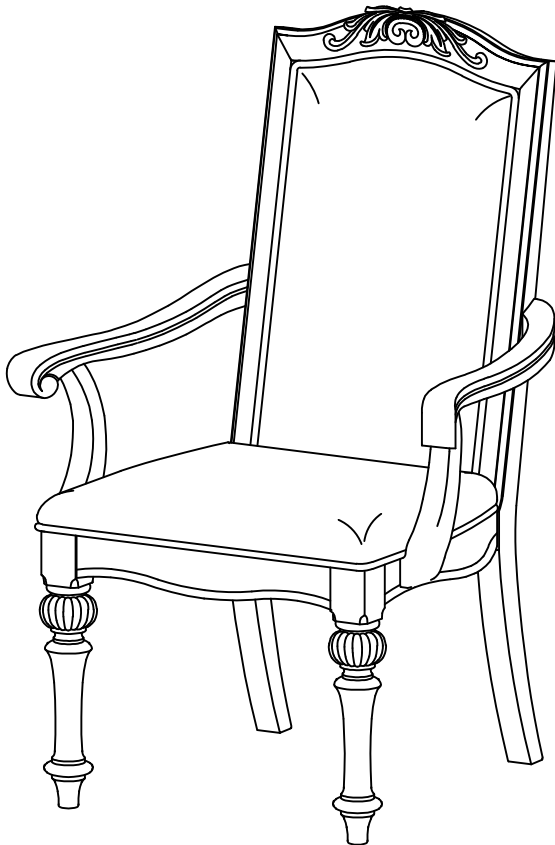


ASSEMBLY INSTRUCTIONS



TOOLS REQUIRED



Allen Wrench

(Included)



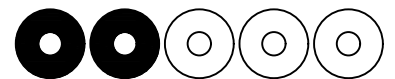
Phillips
Screwdriver

(Not Included)



2 - People
Recommended

ASSEMBLY RATING



EASY —————> DIFFICULT

The Assembly Rating is a 5-point system showing the level of effort needed to assemble a specific product.

Thank you for your purchase!

We hope you enjoy this new addition to your home for many years to come.

Our commitment to providing quality products does not simply end when you purchase our product. We fully stand behind our products from start to finish.



CHECK BEFORE STARTING

☐

Are you missing anything?

Double-check all parts, hardware and accessories listed on Page 6 are accounted for.

☐

Check out our Quick Tips!

We recommend reviewing the pre-assembly handouts. Even experts need a refresher now and then!

☐

Should we send any replacements?

Are there any irregularities or flaws in the parts? We can send replacements!

☐

Prep Time!

Please review the assembly instructions and all diagrams prior to assembling. Arrange parts as recommended on Page 7 and group identical hardware together to make assembling easier.

PRE ASSEMBLY INTRODUCTION

We understand building ready-to-assemble furniture can be a challenging experience for some. To help avoid confusion, we have provided some helpful tips that may speed up the process.



Teamwork

ALWAYS have at least two people to help with transporting and assembling the product to avoid potential injury and/or damage.



Suitable Location

Assembling near the area of the intended location is highly recommended.



Sufficient Space

Make sure you have enough space to move around during the assembly.



Avoid Scratches

Use cardboard, blankets or a carpeted area while assembling furniture to prevent scratches.



Flat Surface

Make sure the furniture rests on a flat and level surface with each leg evenly touching the floor.

ASSEMBLY AND CARE ADVICE



**FAILURE TO FOLLOW THE GUIDELINES BELOW MAY
RESULT IN INJURY AND/OR PROPERTY DAMAGE.**



Position each part correctly
and insert screws or bolts into
their respective holes.



Turn clockwise to tighten and
only tighten when step is
completed or when instructed
to do so.



Save the instructions and store
any supplied tools for later
maintenance.

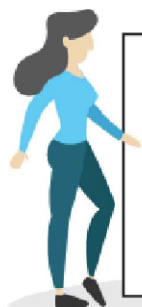
Use the appropriate hand tools
or power tools for assembly.
Select steps, such as tightening
screws and/or bolts, may require
hand tools to avoid causing
damage during assembly.



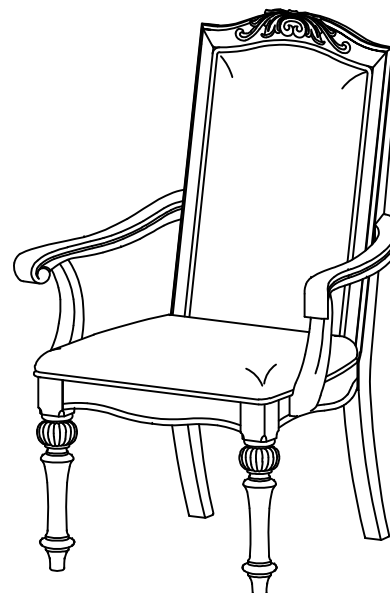
After two weeks, check and
tighten any loose hardware and
repeat again every six months
thereafter.

IT IS THE USER'S RESPONSIBILITY TO MAINTAIN THE FURNITURE. THE HARDWARE MAY LOOSEN OVER TIME AND MAY CAUSE THE FURNITURE TO BE WOBBLY AND UNABLE TO SUPPORT ITS INTENDED WEIGHT CAPACITY. THIS MAY LEAD TO COLLAPSE AND MAY CAUSE SERIOUS INJURY.

ARM CHAIR

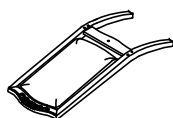


- Please keep instructions for future reference.
- Check the quantity and irregularity of parts and hardware before you start.



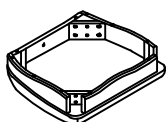
PARTS

#1 1pc x2



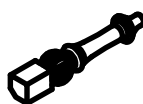
Chair Back

#2 1pc x2



Seat

#3 2pcs x2



Font Leg

#4 1pc x2



Left Arm

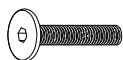
#5 1pc x2



Right Arm

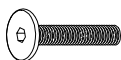
HARDWARE

#A 4pcs x2



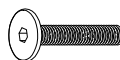
Bolt Ø5/16 x 3"

#B 6pcs x2



Bolt Ø5/16" x 2"

#C 1pc x2



Bolt Ø5/16" x 1-5/8"

#D 11pcs x2



Lock washer
Ø5/16"

#E 11pcs x2



Flat washer
Ø5/16"

#F 1pc x2



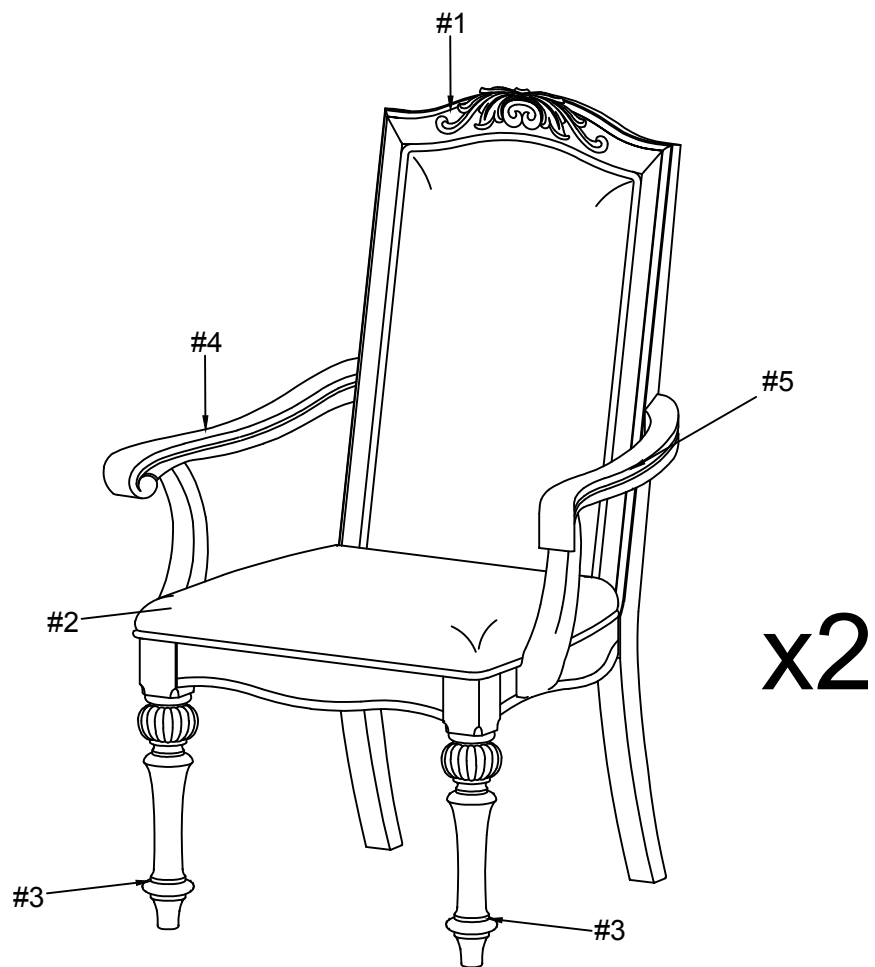
Allen wrench

#G 2pcs x2



Screw 35mm

Exploded View

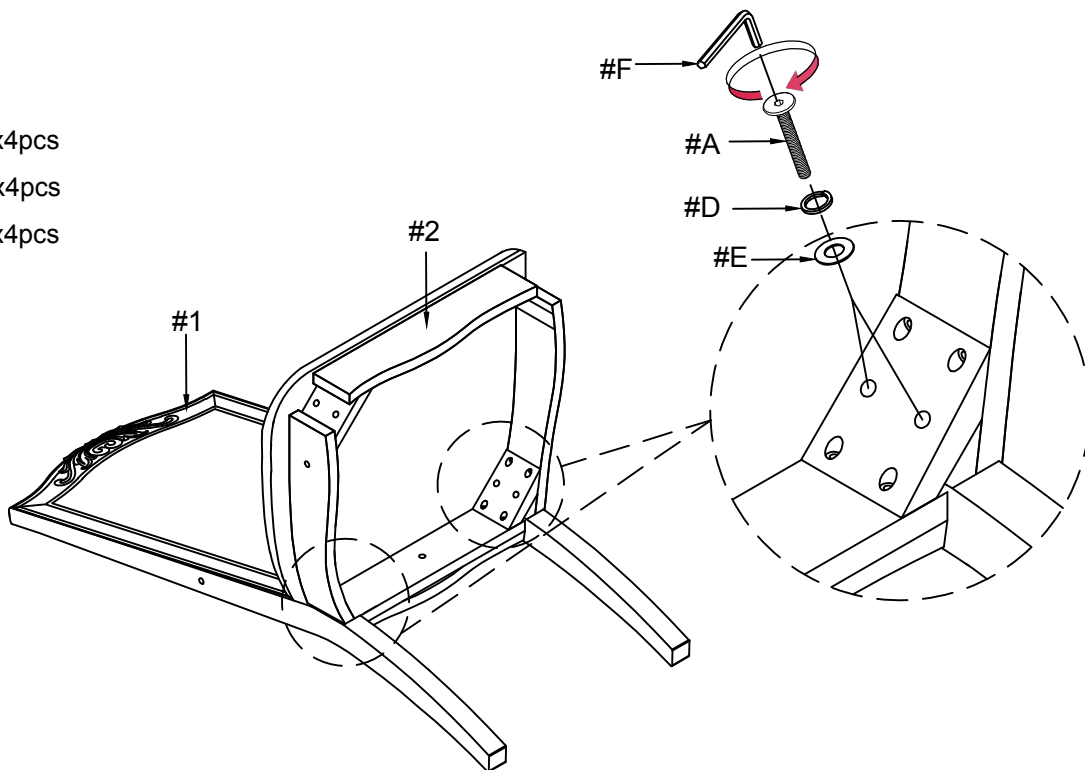


ASSEMBLY INSTRUCTIONS

1

Part **#1** x1pc
Part **#2** x1pc
Hardware **#A** x4pcs
Hardware **#D** x4pcs
Hardware **#E** x4pcs

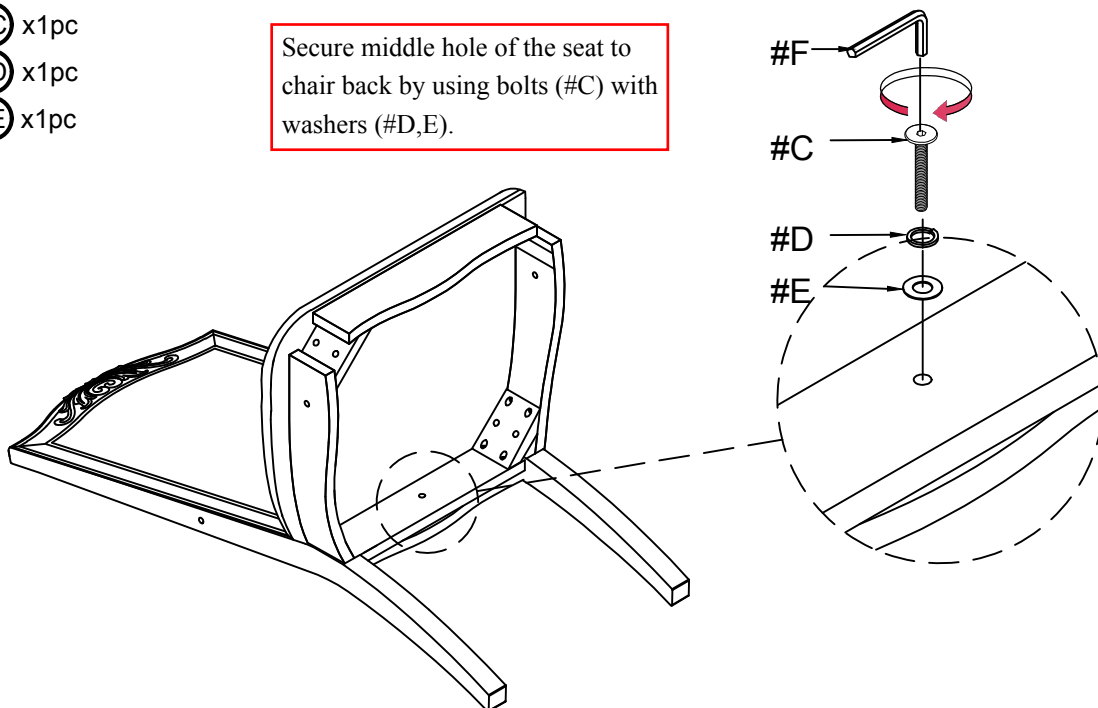
Align seat (#2) to chair back (#1), then secure corner holes by using bolts (#A) with washers (#D,E).



2

Hardware **#C** x1pc
Hardware **#D** x1pc
Hardware **#E** x1pc

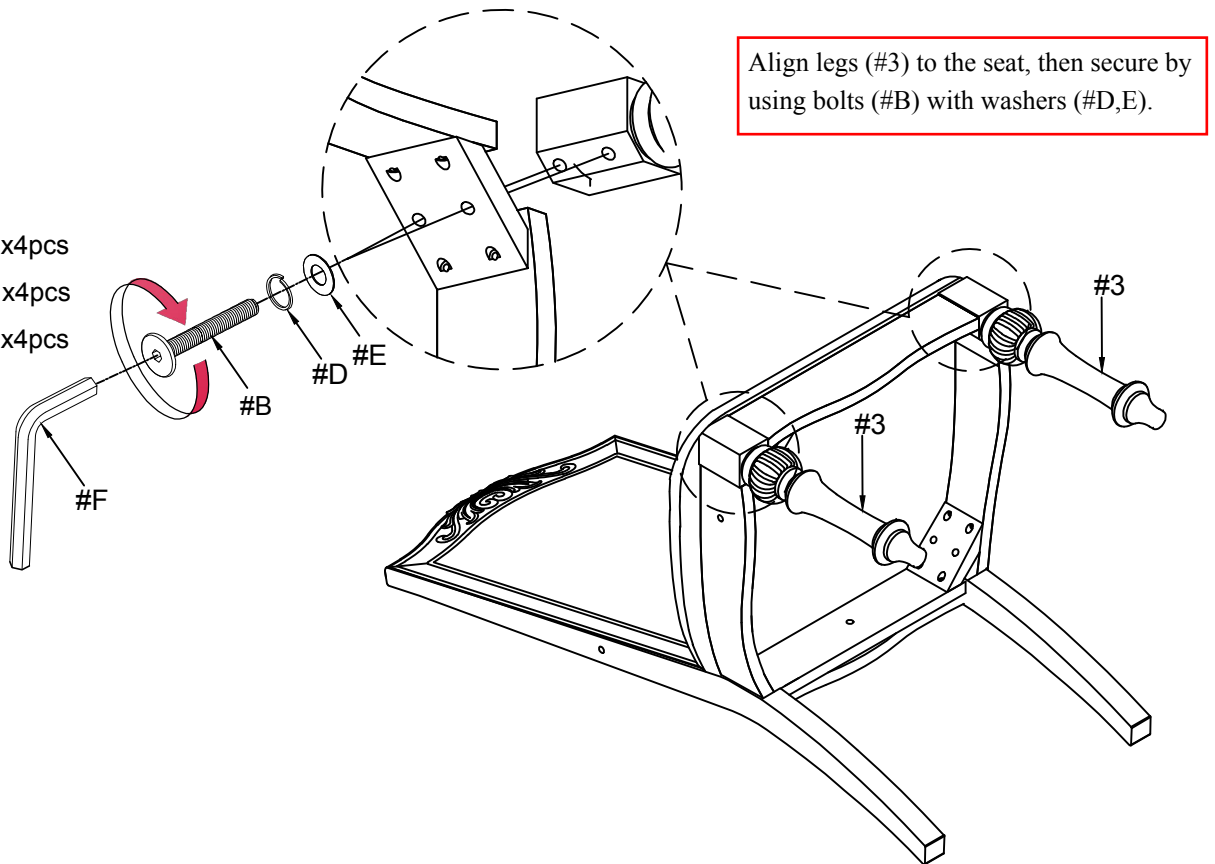
Secure middle hole of the seat to chair back by using bolts (#C) with washers (#D,E).



ASSEMBLY INSTRUCTIONS

3

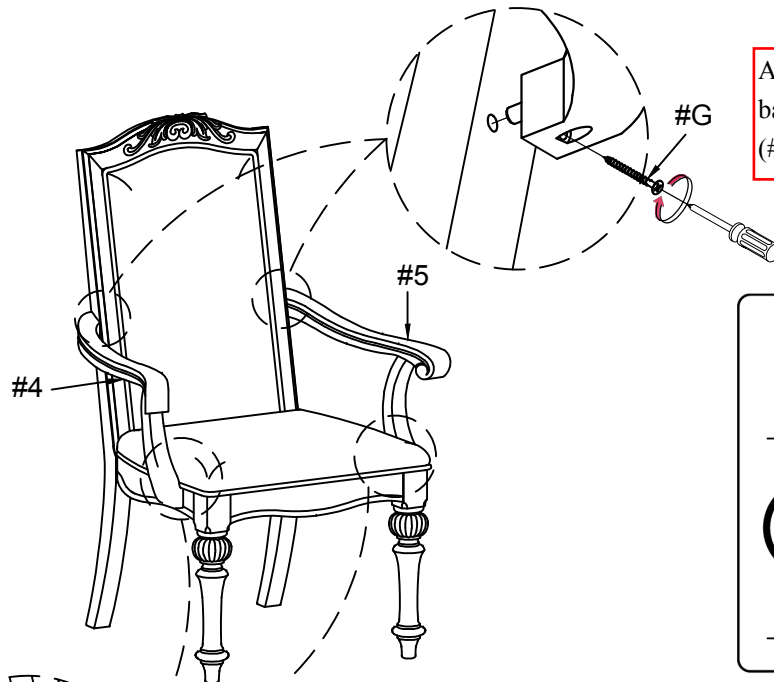
- Part **#3** x2pcs
- Hardware **#B** x4pcs
- Hardware **#D** x4pcs
- Hardware **#E** x4pcs



Align legs (**#3**) to the seat, then secure by using bolts (**#B**) with washers (**#D,E**).

4

- Part **#4** x1pc
- Part **#5** x1pc
- Hardware **#B** x2pcs
- Hardware **#D** x2pcs
- Hardware **#E** x2pcs
- Hardware **#G** x2pcs



Align arms (**#4,5**) to the chair back, then secure by using screws (**#G**).

ASSEMBLY COMPLETED



Please ensure the furniture rests on an even and flat surface. If the product wobbles or feels loose, double-check all bolts and/or screws are properly tightened and secured.



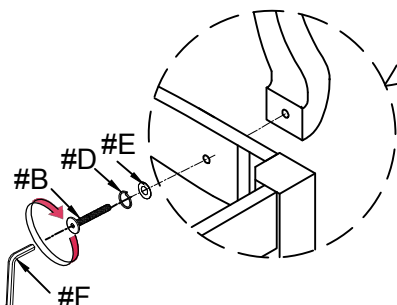
Keep this handy!

Please retain this instruction manual and any order-related information for future reference.



Lift, don't drag!

To avoid damage to product please always LIFT the product when transporting or adjusting the placement.



Align arms (**#4,5**) to the seat, then secure by using bolts (**#B**) with washers (**#D,E**).