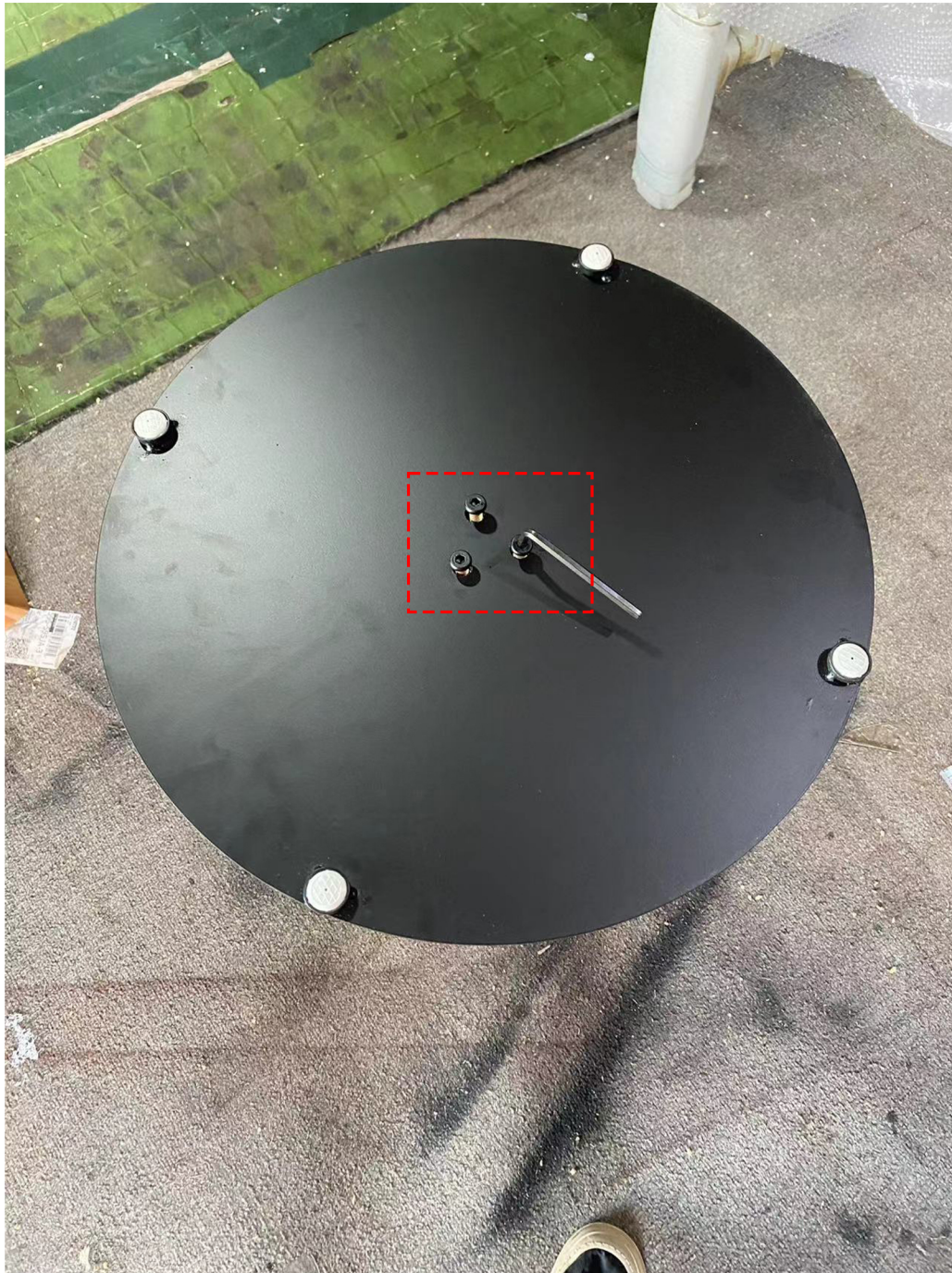




Installation Instructions



Step 1

Place the table leg with the bottom facing upwards. Align the screws with the three holes and tighten them.





Step 2

Turn the desktop upside down with the bottom facing upwards.



Step 3

Align the holes of the table legs with those of the tabletop and tighten the screws.





Step 4

Repeat the same process for the other leg: align the holes in the leg with those in the tabletop, then tighten the screws.

