

1.0 Reference and Address			
Report Number	220916071GZU-002	Original Issued: 21-Nov-2022	Revised: None
Standard(s)	Outdoor Cooking Specialty Gas Appliances [ANSI Z21.89:2017 Ed.5]		
	Outdoor Cooking Specialty Gas Appliances [CSA 1.18:2017 Ed.5]		
Applicant	North Atlantic Imports, LLC	Manufacturer 1	Guangdong Gangyao Technology Co.,Ltd
Address	1073 West 1700 North LOGAN UT 84321	Address	No.C2-1-1, Yinling Technology Industrial Park, Jiangcheng District, YANGJIANG, Guangdong 529511
Country	USA	Country	CHINA
Contact	JC Bush	Contact	John Chen
Phone	NA	Phone	18318272886
FAX	NA	FAX	NA
Email	jc@blackstoneproducts.com	Email	john@teampro.asia

2.0 Product Description	
Product	Outdoor Cooking Specialty Gas Appliances
Brand name	Blackstone
Description	These products covered by this report are Outdoor cooking specialty gas appliances- Grills, for outdoor use only.
Models	2142, 2143, 2144, 1814, 1813
Model Similarity	Model 2142 is similar to 2143 except upper cover. Models 1814 and 2143 are the same except for different model number. Models 1813 and 2144 are the same except for different model number.
Ratings	For models 2142, 2143, 1814: rated at 1*12500 Btu/hr with orifice at 1.04 mm, with CGA600 end fitting is connection to an 1 lb propane cylinder. 11" (2.74 kPa) outlet pressure of regulator. For models 2144, 1813: rated at 2*12000 Btu/hr with orifice at 1.00 mm, with CGA600 end fitting is connection to an 1 lb propane cylinder. 11" (2.74 kPa) outlet pressure of regulator.
Other Ratings	NA

3.0 Product Photographs

Photo 1 - External view of model 2143.



Photo 2 - Bottom view of model 2143.

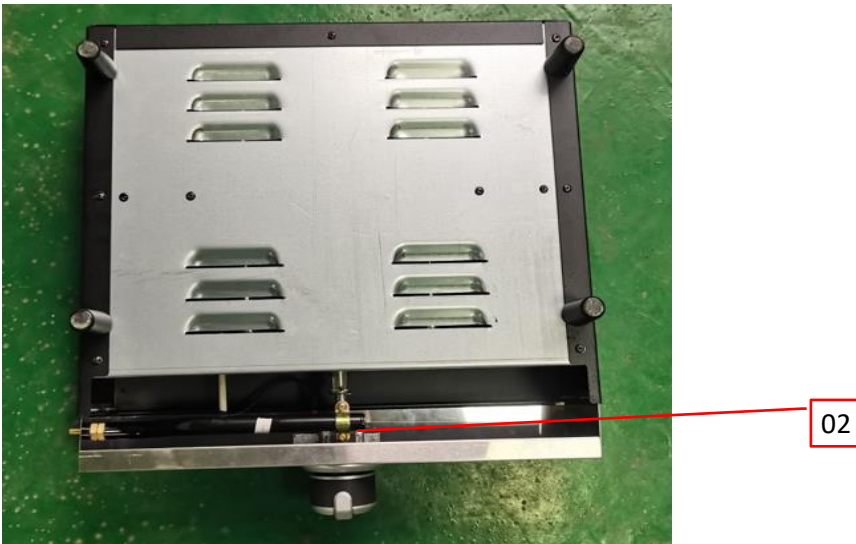


Photo 3 - Burner of 2143.



3.0 Product Photographs

Photo 4 - External view of model 2144.



Photo 5 - Burner of 2144.



Photo 6 - External view of model 2142.



4.0 Critical Components						
Photo #	Item no. ¹	Name	Manufacturer/ trademark ²	Type / model ²	Technical data and securement means	Mark(s) of conformity ³
1	1	Regulator	Dong Guan Abyda Gas Valve Co., Ltd.	KR107	CGA No. 600 X Saddle mounting Outlet pressure setting: 11" W.C.	cCSAus
			ZhongShan GDA Gas Valve Co., Ltd.	GR-148	CGA No. 600 X Saddle mounting Outlet pressure setting: 11" W.C.	cCSAus
			Zhongshan KSUN Hardware Production Co., Ltd.	RY0505D	CGA 600 x Flange – straight Outlet pressure setting: 11" W.C.	cCSAus
2	2	Valve	Guangdong KSUN Intelligent Electric Co.,Ltd.	B400	Valve portion: -20°C to 150°C (-4°F to 302°F); Ignition system portion:-20°C to 120°C (-4°F to 248°F); <u>Inlet pressure rating: 1/2 Psig</u>	cCSAus
			Zhongshan Leetron Gas Appliance Co., Ltd.	A100-0B	Valve portion: -20°C to 150°C (-4°F to 302°F); Ignition system portion:0°C to 120 °C (32°F to 248°F); <u>Inlet pressure rating: 1/2 Psig</u>	cCSAus
			Guangdong GDA Valve Technology Co., Ltd.	GL1B	Valve portion: -20°C to 150°C (-4°F to 302°F); Ignition system portion:0°C to 120 °C (32°F to 248°F); <u>Inlet pressure rating: 1/2 Psig</u>	cCSAus
			Dong Guan Abyda Gas Valve Co., Ltd.	KVLM100-B	Valve portion: -20°C to 150°C (-4°F to 302°F); Ignition system portion:-20°C to 90 °C (-4°F to 194°F); <u>Inlet pressure rating: 1/2 Psig</u>	cCSAus
			Yangjiang Yongshang Shiye Co Ltd	CA23A YD	Valve portion: -20°C to 150°C (-4°F to 302°F); Ignition system portion:-20°C to 120°C (-4°F to 248°F); <u>Inlet pressure rating: 1/2 Psig</u>	cCSAus

NOTES:

- 1) Not all item numbers are indicated (called out) in the photos, as their location is obvious.
- 2) "Various" means any type, from any manufacturer that complies with the "Technical data and securement means" and meets the "Mark(s) of conformity" can be used.
- 3) Indicates specific marks to be verified, which assures the agreed level of surveillance for the component. "NR" - indicates Unlisted and only visual examination is necessary. "See 5.0" indicates Unlisted components or assemblies to be evaluated periodically refer to section 5.0 for details.

5.0 Critical Unlisted CEC Components

No Unlisted CEC components are used in this report.

6.0 Critical Features

Recognized Component - A component part, which has been previously evaluated by an accredited certification body with restrictions and must be evaluated as part of the basic product considering the restrictions as specified by the Conditions of Acceptability.

Listed Component - A component part, which has been previously Listed or Certified by an accredited Certification Organization with no restrictions and is used in the intended application within its ratings.

Unlisted Component - A part that has not been previously evaluated to the appropriate designated component standard. It may also be a Listed or Recognized component that is being used outside of its evaluated Listing or component recognition.

Critical Features/Components - An essential part, material, subassembly, system, software, or accessory of a product that has a direct bearing on the product's conformance to applicable requirements of the product standard.

Construction Details - For specific construction details, reference should be made to the photographs and descriptions. All dimensions are approximate unless specified as exact or within a tolerance. In addition to the specific construction details described in this Report, the following general requirements also apply.

1 Corrosion Protection - All ferrous metal parts are protected against corrosion by painting, plating or the equivalent.

2 Markings - The following markings are required: Attached tags refer to Illustration No(s). 1-3 for details.

3 Cautionary Markings - The following are required: Attached tags refer to Illustration No(s). 1-2 for details.

4 Installation, Operating and Safety Instructions - Instructions for installation and use of this product are provided by the manufacturer. Refer to Illustration No(s). 4-5 for details.

5 Schematics - Refer to Illustration No(s). 6-10 for key drawings requiring verification during Field Representative Inspection Audits.

7.0 Illustrations

Illustration 1 - Marking of model 2143-Eng & Fre.

BLACKSTONE®

North Atlantic Imports, LLC, (435) 252-3030
1073 West 1700 North, Logan, UT 84321

OUTDOOR GAS GRIDDLE
PLAQUE CHAUFFANTE AU GAZ POUR L'EXTÉRIEUR
PLANCHA DE GAS AL AIRE LIBRE

Model/Modèle/Modelo: 2143

1 x 12,500 BTU/hr
Max Output: 12,500 BTU/hr

SERIAL No / N° DE SÉRIE / N° DE SERIE:

TYPE OF GAS: LP/PROPANE AT 11" W.C.

For outdoor use only. If stored indoors, detach and leave cylinder outdoors. CAUTION: The gas pressure regulator provided with this appliance must be used. Replace only with regulator Model No. KR107-GR-148, RY0505D. This regulator is set for an outlet pressure of 11 inches of water column (0.40 psi). For household and outdoor use only. This appliance is not intended for commercial use.

TYPE DE GAZ: PL/PROPANE À 11 PO DE COLONNE D'EAU

Pour usage extérieur uniquement. Si est stocké à l'intérieur, détachez et laissez la bouteille à l'extérieur. ATTENTION: Le régulateur de pression de gaz fourni avec cet appareil doit être utilisé. Remplacez uniquement par le modèle de régulateur No. KR107-GR-148, RY0505D. Ce régulateur est réglé pour une pression de sortie de 11 pouces de colonne d'eau (0,40 psi). Pour usage domestique et extérieur uniquement. Cet appareil n'est pas destiné à un usage commercial.

TIPO DE GAS: GAS LICUADO DE PETRÓLEO/PROPANO A 11 P.C.A.

Solo para uso en exteriores. Si se almacena en el interior, sepárelo y deje el cilindro al aire libre. PRECAUCIÓN: Se debe usar el regulador de presión de gas provisto con este aparato. Reemplace solo con el regulador Modelo No. KR107-GR-148, RY0505D. Este regulador está configurado para una presión de salida de 11 pulgadas de columna de agua (0,40 psi). Solo para uso doméstico y al aire libre. Este aparato no está diseñado para uso comercial.

1. Minimum clearance from sides and back of unit to combustible constructions, 36 inches from sides and 36 inches from back.
2. Do not use under overhead construction.
3. (a) Do not store a spare LP-gas cylinder under or near this appliance; (b) Never fill the cylinder beyond 80 percent full; and (c) If the information in "(a)" and "(b)" is not followed exactly, a fire causing death or serious injury may occur.
4. Distance required between the griddle unit to the LP tank: 2.55" (6.48 cm)
5. This appliance is not for frying turkeys.
1. Les côtés et l'arrière de l'appareil doivent se trouver à une distance minimale de 91 cm (36 po) des constructions combustibles.
2. Ne pas utiliser sous une construction aérienne.
3. (a) Ne rangez pas une bouteille de gaz PL de recharge sous cet appareil ou à proximité de celui-ci; (b) Ne remplissez jamais de bouteille au-delà de 80 %; et (c) Le non-respect des consignes « (a) » et « (b) » peut causer un incendie risquant de provoquer des blessures graves ou mortelles.
4. Distance requise entre la plaque chauffante et le réservoir de GPL: 2,55" (6,48 cm)
5. Cet appareil n'est pas destiné à friture des dinde.
1. Deje un espacio libre mínimo de 36 pulgadas entre los costados o la parte posterior de la parrilla, y cualquier estructura de material combustible.
2. No usar bajo construcciones elevadas.
3. (a) No guarde tanques de repuesto de gas licuado de petróleo debajo o cerca de este (b) Nunca llene el tanque a más del 80 por ciento de su capacidad total; y (c) Si no observa exactamente las instrucciones indicadas en (a) y en (b), puede producir un incendio que puede provocarle la muerte o lesiones graves.
4. Distancia requerida entre la unidad de plancha y el tanque de propano líquido: 2,55" (6,48 cm)
5. Este aparato no es para freír pavos.

ANS Z21.89-2017 CSA1.18-2017
Outdoor Cooking Specialty Gas Appliances
Appareil à gaz spécialisé pour la cuisson en plein air
Aparato de gas especial para cocinar al aire libre

BLACKSTONEPRODUCTS.COM/SUPPORT



BLACKSTONE®

WARNING: FOR OUTDOOR USE ONLY

Do not use under overhead construction.
This appliance must not be used inside an enclosed area.
Do Not Touch Faceplate While Cooking.

AVERTISSEMENT: UTILISER SEULEMENT À L'EXTÉRIEUR

Ne pas utiliser sous une construction en hauteur.
Cet appareil ne doit pas être utilisé à l'intérieur d'un espace clos.
Ne Touchez Pas La Façade Pendant La Cuisson.

ADVERTENCIA: EXCLUSIVAMENTE PARA USO EXTERNO

No lo use debajo de construcciones elevadas.
Este aparato no debe usarse dentro de un área cerrada.
No Toque La Placa Frontal Mientras Cocina.

Covered By One or More U.S. Patent Numbers:

10,327,588; 10,327,589; 10,952,564; 10,959,572 PATENTS PENDING

⚠ DANGER

Never Operate This Appliance Unattended

- Failure to follow this danger statement could result in fire, explosion or burn hazard that could cause property damage, personal injury or death.
- If a fire should occur, keep away from the appliance and immediately call your fire department. DO NOT ATTEMPT TO EXTINGUISH AN OIL/GREASE FIRE WITH WATER.

⚠ PELIGRO

Nunca Opere Este Dispositivo Desatendido

- El incumplimiento de esta declaración de peligro podría ocasionar incendios, explosiones o peligro de quemaduras que podrían causar daños a la propiedad, lesiones personales o la muerte.
- Si ocurre un incendio, manténgase alejado del electrodoméstico e inmediatamente llame a su departamento de bomberos. NO INTENTE EXTINGUIR UN INCENDIO DE ACEITE / GRASA CON AGUA.

⚠ DANGER

Ne Jamais Utilisez Cet Appareil Sans Surveillance

- Le non-respect de cette déclaration de danger peut entraîner un risque d'incendie, d'explosion ou de brûlure pouvant entraîner des dommages matériels, des blessures ou la mort.
- En cas d'incendie, éloignez-vous de l'appareil et appelez immédiatement votre service d'incendie. N'ESSAYEZ PAS D'EXTINGUIR UN FEU D'HUILE / GRAISSE AVEC DE L'EAU.

7.0 Illustrations

Illustration 2 - Marking of model 2144-Eng & Fre.

BLACKSTONE[®]

North Atlantic Imports, LLC. (435) 252-3030
1073 West 1700 North, Logan, UT 84321

OUTDOOR GAS GRIDDLE

PLAQUE CHAUFFANTE AU GAZ POUR L'EXTÉRIEUR
PLANCHA DE GAS AL AIRE LIBRE

Model/Modèle/Modelo: **2144**

2 x 12,000 BTU/hr
Max Output: 24,000 BTU/hr

SERIAL N° / N° DE SÉRIE / N° DE SERIE:

TYPE OF GAS: LP/PROPANE AT 11" W.C.

For outdoor use only. If stored indoors, detach and leave cylinder outdoors. CAUTION: The gas pressure regulator provided with this application must be used. Replace only regulator Model NO. KR107, GR-148, RV19550. Model NO. to be provided by the appliance manufacturer. This regulator is set for an outlet pressure of 11 inches water column (0.40 psi). This appliance is not intended for commercial use.

TYPE DE GAZ : PL/PROPANE À 11 PO DE COLONNE D'EAU

Pour utilisation à l'extérieur uniquement. En cas de rangement à l'intérieur, retirez la bouteille de gaz et laissez-la à l'extérieur. ATTENTION: Le régulateur de pression de gaz fourni avec cet appareil doit être utilisé. Remplacer seulement avec le régulateur au modèle No. KR107, GR-148, RV19550. Modèle NO qui est fourni par le fabricant d'appareil. Ce régulateur est réglé pour une pression de sortie de 11 pouces de colonne d'eau (0.40 psi). Cet appareil n'est pas destiné à l'usage commercial.

TIPO DE GAS: GAS LICUADO DE PETRÓLEO/PROPANO A 11 p.c.a.

Sólo para usar al aire libre. Si lo guarda bajo techo, desconecte el tanque y déjelo al aire libre. PRECAUCIÓN: el regulador de presión de gas suministrado con este aparato debe ser utilizado. Reemplace sólo con el regulador Modelo N° KR107, GR-148, RV19550. Modelo o n° será proporcionado por el fabricante del aparato. El regulador está graduado para la presión de salida de una columna de agua de 11 pulgadas (0.40 psi). Este aparato no está diseñado para uso comercial.

BLACKSTONE[®]

WARNING: FOR OUTDOOR USE ONLY

This appliance must not be used inside an enclosed area.

Do Not Touch Faceplate While Cooking.

AVERTISSEMENT: UTILISER SEULEMENT À L'EXTÉRIEUR

Cet appareil ne doit pas être utilisé à l'intérieur d'un espace clos.

Ne Touchez Pas La Façade Pendant La Cuisson.

ADVERTENCIA: EXCLUSIVAMENTE PARA USO EXTERNO

Este aparato no debe usarse dentro de un área cerrada.

No Toque La Placa Frontal Mientras Cocina.

Covered By One or More U.S. Patent Numbers:

10,327,588; 10,327,589; 10,952,564; 10,959,572 PATENTS PENDING

Products are for outdoor use only and conform to ANSI Z21.89.2017 and certified to CSA STD 1.18.2017.

This appliance is not for recreational vehicle.

⚠ DANGER

Never Operate This Appliance Unattended

- Failure to follow this danger statement could result in fire, explosion or burn hazard that could cause property damage, personal injury or death.
- If a fire should occur, keep away from the appliance and immediately call your fire department. DO NOT ATTEMPT TO EXTINGUISH AN OIL/GREASE FIRE WITH WATER.

1. Minimum clearance from sides and back of unit to combustible constructions, 36 inches from sides and 36 inches from back.
2. Do not use under overhead construction.
3. (a) Do not store a spare LP-gas cylinder under or near this appliance; (b) Never fill the cylinder beyond 80 percent full; and (c) If the information in "(a)" and "(b)" is not followed exactly, a fire causing death or serious injury may occur.
4. Distance required between the griddle unit to the LP tank: 2.55" (6.48cm)
1. Les côtés et l'arrière de l'appareil doivent se trouver à une distance minimale de 91 cm (36 po) des constructions combustibles.
2. Ne pas utiliser sous une construction aérienne.
3. (a) Ne rangez pas une bouteille de gaz PL de recharge sous cet appareil ou à proximité de celui-ci; (b) Ne remplissez jamais de bouteille au-delà de 80 %; et (c) Le non-respect des consignes « (a) » et « (b) » peut causer un incendie risquant de provoquer des blessures graves ou mortelles.
4. Distance requise entre la plaque chauffante et le réservoir de GPL: 2.55" (6.48cm)
1. Deje un espacio libre mínimo de 36 pulgadas entre los costados o la parte posterior de la parrilla, y cualquier estructura de material combustible.
2. No usar bajo construcciones elevadas.
3. (a) No guarde tanques de repuesto de gas licuado de petróleo debajo o cerca de este (b) Nunca llene el tanque a más del 80 por ciento de su capacidad total; y (c) Si no observa exactamente las instrucciones indicadas en (a) y en (b), puede producir un incendio que puede provocarle la muerte o lesiones graves.
4. Distancia requerida entre la unidad de plancha y el tanque de propano líquido: 2.55" (6.48 cm)
5. The LP gas supply cylinder must be disconnected when this appliance is not in use.
6. Outdoor cooking gas appliances for connection to a self-contained LP gas supply system utilizing a connection No.600 shall bear a Class I IA marking to the effect that only cylinders marked "propane" shall be used.

ANS Z 21.89-2017 CSA 1.18-2017
Outdoor Cooking Specialty Gas Appliances.
Appareil à gaz spécialisé pour la cuisson en plein air
Aparato de gas especial para cocinar al aire libre

BLACKSTONEPRODUCTS.COM/SUPPORT



⚠ PELIGRO

Nunca Opere Este Dispositivo Desatendido

- El incumplimiento de esta declaración de peligro podría ocasionar incendios, explosiones o peligro de quemaduras que podrían causar daños a la propiedad, lesiones personales o la muerte.
- Si ocurre un incendio, manténgase alejado del electrodoméstico e inmediatamente llame a su departamento de bomberos. NO INTENTE EXTINGUIR UN INCENDIO DE ACEITE / GRASA CON AGUA.

⚠ DANGER

Ne Jamais Utiliser Cet Appareil Sans Surveillance

- Le non-respect de cette déclaration de danger peut entraîner un risque d'incendie, d'explosion ou de brûlure pouvant entraîner des dommages matériels, des blessures ou la mort.
- En cas d'incendie, éloignez-vous de l'appareil et appelez immédiatement votre service d'incendie. N'ESSAYEZ PAS D'EXTINGUINER UN FEU D'HUILE / GRAISSE AVEC DE L'EAU.

7.0 Illustrations

Illustration 3 - Lighting instruction -Eng & Fre.



BLACKSTONE®

LIGHTING INSTRUCTIONS

1. Read all instructions before lighting.
2. Open hood prior to lighting.
3. Push the control knob in to start gas flowing.
4. Turn the control knob counterclockwise to activate starter. ⚡
5. Adjust the temperature to desired level.
6. If ignition does not occur in 5 seconds, return to Off ⏻
and repeat after 5 minutes.

WARNING: Do not touch faceplate while cooking.

INSTRUCCIONES PARA ENCENDER

1. Lea todas las instrucciones antes de encender.
2. Abra la cubierta antes de encender.
3. Empuje y gire la perilla de control para que comience a fluir el gas.
4. Gire la perilla de control en sentido antihorario para activar el interruptor de encendido. ⚡
5. Ajuste la temperatura al nivel deseado.
6. Si el encendido no se produce en 5 segundos, regrese a Apagado ⏻
y repita luego de 5 minutos.

ADVERTENCIA: No toque la placa frontal cuando cocine.

INSTRUCTIONS D'ALLUMAGE

1. Lire toutes les instructions avant l'allumage.
2. Ouvrir le capot avant l'allumage.
3. Pousser le bouton de commande pour faire circuler le gaz.
4. Tourner le bouton de commande dans le sens antihoraire pour activer le démarreur. ⚡
5. Régler la température au niveau désiré.
6. Si l'allumage ne se produit pas dans les 5 secondes, revenir sur Arrêt ⏻
et réessayer après cinq minutes.

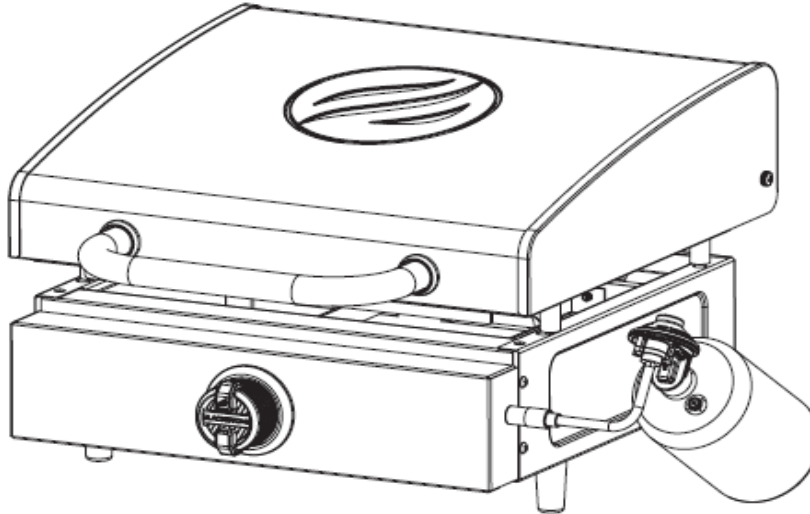
AVERTISSEMENT: Ne pas toucher la plaque frontale pendant la cuisson.

7.0 Illustrations

Illustration 4 - Cover page of instructions for model 2143.

BLACKSTONE®

MODEL: 2143 v03



ENGLISH

OWNER'S MANUAL

17" GRIDDLE WITH HOOD

TABLE OF CONTENTS

IMPORTANT SAFETY INFORMATION	02
ACTIVATE YOUR WARRANTY	03
ASSEMBLY GUIDE	04
USING YOUR BLACKSTONE	07
TROUBLESHOOTING	13



For the latest version of this manual, scan this code or visit BlackstoneProducts.com/support

IMPORTANT:

This instruction manual contains important information necessary for the proper assembly and safe use of the appliance.

Read and follow all warnings and instructions before assembling and using the appliance.

Follow all warnings and instructions when using the appliance.

Keep this manual for future reference.

Installer/Assembler: Leave these instructions with the consumer.

SAFETY ALERT KEY

▲ DANGER

Indicates a hazardous situation that, if not avoided, will result in death or serious injury.

▲ CAUTION

Indicates a hazardous situation that, if not avoided, could result in minor or moderate injury.

▲ WARNING

Indicates a hazardous situation that, if not avoided, could result in death or serious injury.

NOTICE

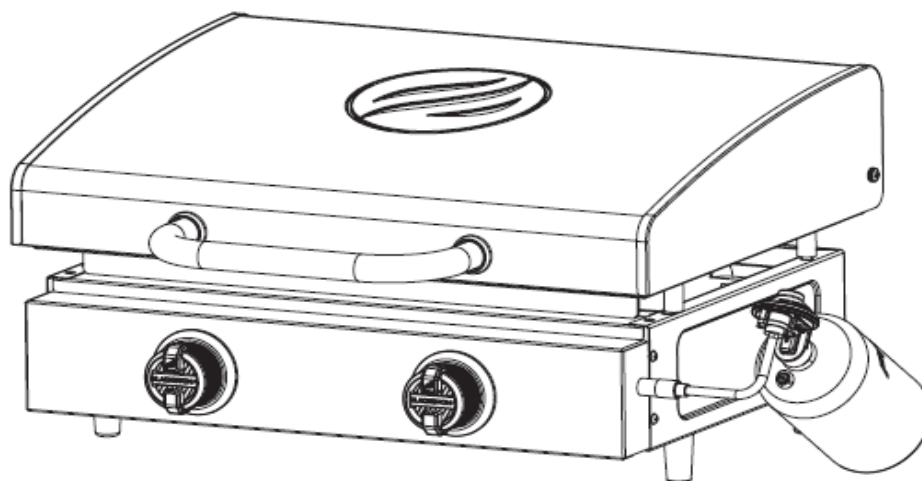
Indicates information considered important, but not hazard-related (e.g. messages related to property damage).

7.0 Illustrations

Illustration 5 - Cover page of instructions for model 2144.

BLACKSTONE®

MODEL: 2144 v04



ENGLISH

OWNER'S MANUAL

22" GRIDDLE WITH HOOD

TABLE OF CONTENTS

IMPORTANT SAFETY INFORMATION	02
ACTIVATE YOUR WARRANTY	03
ASSEMBLY GUIDE	04
USING YOUR BLACKSTONE	07
TROUBLESHOOTING	13



For the latest version of this manual, scan this code or visit BlackstoneProducts.com/support

IMPORTANT:

This instruction manual contains important information necessary for the proper assembly and safe use of the appliance.

Read and follow all warnings and instructions before assembling and using the appliance.

Follow all warnings and instructions when using the appliance.

Keep this manual for future reference.

Installer/Assembler: Leave these instructions with the consumer.

SAFETY ALERT KEY

▲ DANGER

Indicates a hazardous situation that, if not avoided, will result in death or serious injury.

▲ CAUTION

Indicates a hazardous situation that, if not avoided, could result in minor or moderate injury.

▲ WARNING

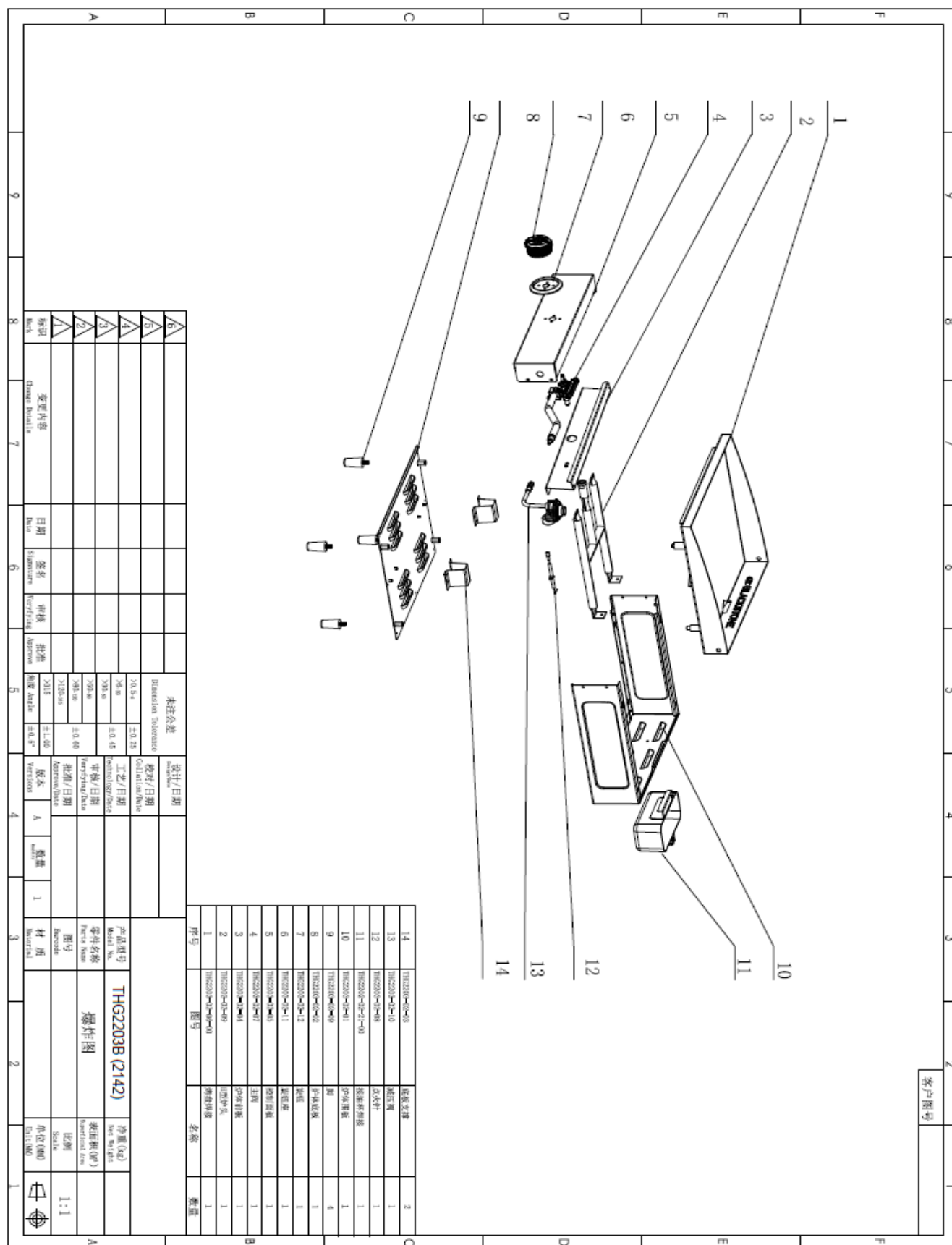
Indicates a hazardous situation that, if not avoided, could result in death or serious injury.

NOTICE


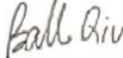
Indicates information considered important, but not hazard-related (e.g. messages related to property damage).

7.0 Illustrations

Illustration 10 - The explosion drawing of model 2142.



8.0 Test Summary			
Evaluation Period	7-Nov-22		Project No. 220916071GZU
Sample Rec. Date	4-Nov-2022	Condition Prototype	Sample ID. S220916071GZU.002
Test Location	Intertek Testing Services Shenzhen Ltd. Guangzhou Branch (Room 4103 & 4203, No. 63, Punan Road, Huangpu District, Guangzhou, Guangdong Province, China.)		
Test Procedure	Testing Lab		
Determination of the result includes consideration of measurement uncertainty from the test equipment and methods. The product was tested as indicated below with results in conformance to the relevant test criteria.			
Due to the previous testing performed under Intertek Report 220629205GZU-001 only the following testing was performed:			
Test Description	Outdoor Cooking Specialty Gas Appliances [ANSI Z21.89:2017 Ed.5]; Outdoor Cooking Specialty Gas Appliances [CSA 1.18:2017 Ed.5]		
Burner Capacity	5.4		
Combustion	5.5		

8.1 Signatures			
A representative sample of the product covered by this report has been evaluated and found to comply with the applicable requirements of the standards indicated in Section 1.0.			
Completed by:	Zhifang Cai	Reviewed by:	Ball Qiu
Title:	Engineer	Title:	Project Engineer
Signature:		Signature:	

9.0 Correlation Page For Multiple Listings

The following products, which are identical to those identified in this report except for model number and Listee name, are authorized to bear the ETL label under provisions of the Intertek Multiple Listing Program.

BASIC LISTEE	North Atlantic Imports, LLC
Address	1073 West 1700 North LOGAN UT 84321
Country	USA
Product	Outdoor Cooking Specialty Gas Appliances

MULTIPLE LISTEE 1	None
Address	
Country	
Brand Name	

ASSOCIATED MANUFACTURER	
Address	
Country	

MULTIPLE LISTEE 1 MODELS	BASIC LISTEE MODELS

MULTIPLE LISTEE 2	None
Address	
Country	
Brand Name	

ASSOCIATED MANUFACTURER	
Address	
Country	

MULTIPLE LISTEE 2 MODELS	BASIC LISTEE MODELS

MULTIPLE LISTEE 3	None
Address	
Country	
Brand Name	

ASSOCIATED MANUFACTURER	
Address	
Country	

MULTIPLE LISTEE 3 MODELS	BASIC LISTEE MODELS

10.0 General Information

The Applicant and Manufacturer have agreed to produce, test and label ETL Listed products in accordance with the requirements of this Report. The Manufacturer has also agreed to notify Intertek and to request authorization prior to using alternate parts, components or materials.

COMPONENTS

Components used shall be those itemized in this Intertek report covering the product, including any amendments

LISTING MARK

The ETL Listing mark applied to the products shall either be separable in form, such as labels purchased from Intertek, or on a product nameplate or other media only as specifically authorized by Intertek. Use of the mark is subject to the control of Intertek.

The mark must include the following four items:

- 1) applicable country identifiers "US" and/or "C" or "US", "C" and "EU"
- 2) the word "Listed" or "Classified" or "Recognized Component" (whichever is appropriate)
- 3) a control number issued by Intertek
- 4) a product descriptor that identifies the standards used for certification. Example:

For US standards, the words, "Conforms to" shall appear with the standard number along with the word, "Standard" or "Std." Example: "Conforms to ANSI/UL Std. XX."

For Canadian standards, the words "Certified to CAN/CSA Standard CXX No. XX." shall be used, or abbreviated, "Cert. to CAN/CSA Std. CXX No. XX."

Can be used together when both standards are used.

If all standards on the ATM have the same standard title, the shared title or its abbreviation may be used in place of the examples above. Example: "Medical Electrical Equipment" or "MEE"; "Information Technology Equipment" or "ITE"; "Audio/Video Information And Communication Technology Equipment" or "A/V ICTE".

Note: A facsimile must be submitted to Intertek, Attn: Follow-up Services for approval prior to use.

The facsimile need not have a control number. A control number will be issued **after signed Certification Agreements** have been received by the Follow-up Services office, approval of the facsimile of your proposed Listing Mark, satisfactory completion of the Listing Report, and scheduling of a factory assessment in your facility.

MANUFACTURING AND PRODUCTION TESTS

Manufacturing and Production Tests shall be performed as required in this Report.

FOLLOW-UP SERVICE

Periodic unannounced audits of the manufacturing facility (and any locations authorized to apply the mark) shall be scheduled by Intertek. An audit report shall be issued after each visit. Special attention will be given to the following:

1. Conformance of the manufactured product to the descriptions in this Report.
2. Conformance of the use of the ETL mark with the requirements of this Report and the Certification Agreement.
3. Manufacturing changes.
4. Performance of specified Manufacturing and Production Tests.

In the event that the Intertek representative identifies non-conformance(s) to any provision of this Report, the Applicant shall take one or more of the following actions:

1. Correct the non-conformance.
2. Remove the ETL Mark from non-conforming product.
3. Contact the issuing product safety evaluation center for instructions.

10.1 Evaluation of Unlisted Components

Because Unlisted Components are uncontrolled, and they do not fall under a third party follow up program, Intertek may require these components to be tested and/or evaluated at least once annually, more often for certain components, as part of the independent certification process. The Unlisted Components in Section 5.0 require testing and/or evaluation as indicated.

The Applicant will be notified, in writing, via the applicable contact methods, as defined in Section 1.0, when these components must be selected and sent to Component Evaluation Center (CEC) for re-evaluation.

Due to particular testing requirements, some components may be requested to be shipped to specific labs. Thus, specific shipment destination(s) for each sample will be provided in the written notification.

Managing CEC Location:

Intertek Testing Services Shenzhen Limited Guangzhou Branch

ETL Component Evaluation Center

Room 02, &101/E201/E301/E401/E501/E601/E701/E801 of Room 01 1-8/F., No. 7-2,

Caipin Road, Science City

GETDD Guangzhou, Guangdong, China

Attn: Ms. Joey Kuang

Sample Disposition: Due to the destructive nature of the testing, all samples will be discarded at the conclusion of testing unless, the manufacturer specifically requests the return of the samples. The request for return must accompany the initial component shipment.

11.0 Manufacturing and Production Tests	
The manufacturer agrees to conduct the following Manufacturing and Production Tests as specified:	
Required Tests	
11.1 Gas tightness 11.2 Burner Operating Characteristics 11.3 Combustion 11.4 Ignition	
11.1 Gas tightness	
<u>Method</u> Test fire each burner and manifold and control assembly for proper burner and gas valve operation and verify the gas tightness of the manifold and control assembly. No leakage on each manifold and control assembly shall be observed	
<u>Test Equipment</u> Gas leak tester	
Products Requiring Gas tightness	
<u>Product</u> All products covered by this Report.	<u>Frequency</u> 100%
11.2 Burner Operating Characteristics	
<u>Method</u> Test shall consist of a series of three tests; one at normal test pressure, one at a reduced test pressure and one at an increased test pressure, whichever is applicable. Burners shall not flash back; Burner flames shall not flash outside of appliance; No damage to the appliance; Pilot shall not deposit carbon.	
<u>Test Equipment</u> Stop watch, Press Meter	
Products Requiring Burner Operating Characteristics	
<u>Product</u> All products covered by this Report	<u>Frequency</u> at least once per year 5 pieces per quarter
11.3 Combustion	
<u>Method</u> Test shall consist of a series of three tests; one at normal test pressure, one at a reduced test pressure and one at an increased test pressure, whichever is applicable. Carbon monoxide shall not exceed 0.08% air free	
<u>Test Equipment</u> Stop watch, Press Meter, Analyzer for Flue Gases	
Products Requiring Combustion	
<u>Product</u> All products covered by this Report	<u>Frequency</u> at least once per year 5 pieces per quarter
11.4 Ignition	
<u>Method</u> Test shall consist of a series of three tests; one at normal test pressure, one at a reduced test pressure and one at an increased test pressure or increased input rate, whichever is applicable. Ignition device shall effectively ignite the burner within 4 seconds, after gas is available at the burner ports; Ignition test shall repeat at least 5 times.	
<u>Test Equipment</u> Stop watch, Press Meter	
Products Requiring Ignition	
<u>Product</u> All products covered by this Report Ignition test	<u>Frequency</u> 100%

