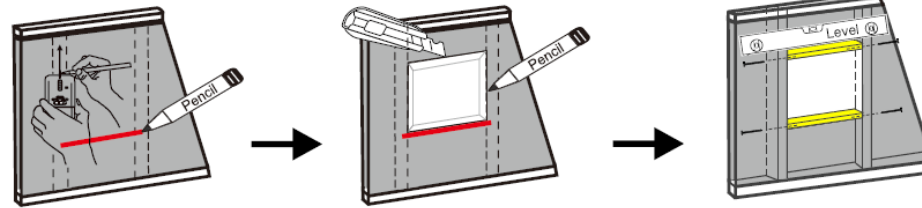


## Installation Steps

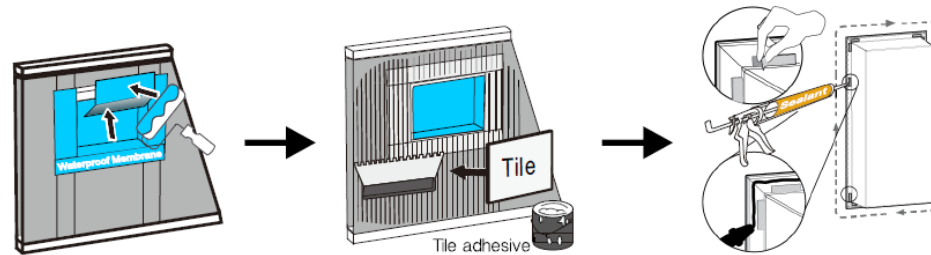
The following installation details are applicable for existing wall before tiling, do not cover every possible situation. Always consult with licenced professional during preparation and installation.



1. Locate and mark the center lines of adjacent framing studs using a stud finder or by tapping the wall. Draw **level line** between the two wall studs at your desired height of niche.

2. Trace the cutline with pencil, above the center line, cut out a cave on the wall board along the traced line. Be sure the top and bottom lines are level.

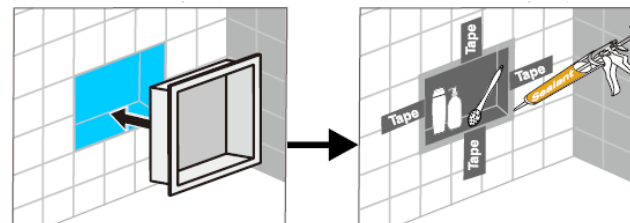
3. Level and fasten the surrounding framing to adjacent vertical studs, make the dimension matches the niche flange.



4. Glue waterproofing membrane inside to seal the whole cave and extend 6" to four sides of surrounding wall. **Create watertight seal cave is very important.**

5. Apply your setting material and set your tile, marble or stone directly to shower wall. It is best for tile to be symmetric around the cave. The tile line can end right on the niche for a very clean look.

6. Remove the protective film of the tape, apply an uninterrupted bead of silicon sealant from the inside corner of the niche to the edge. Ensure sealant applied thickness 1/4".



7. Insert the niche fixture into the cave. Press the flange tightly and ensure the niche plumb and level. Wipe off the excess sealant along the perimeter edges.

8. Tape the flanges with wall to hold the niche in place until the sealant cured.

### OPTIONAL

If the niche is very close to the shower head, apply silicone adhesive all around the niche to ensure an optimal waterproofing.

### Note:

1. Newly constructed wall, start install from step 3.
2. If the wall recess greater than the niche, attach framing studs to accommodate the niche.
3. Building codes prohibit the use of water-resistant gypsum wallboard ("green board") as the tile backer in showers.

Wait for  
**48h**  
before using.

