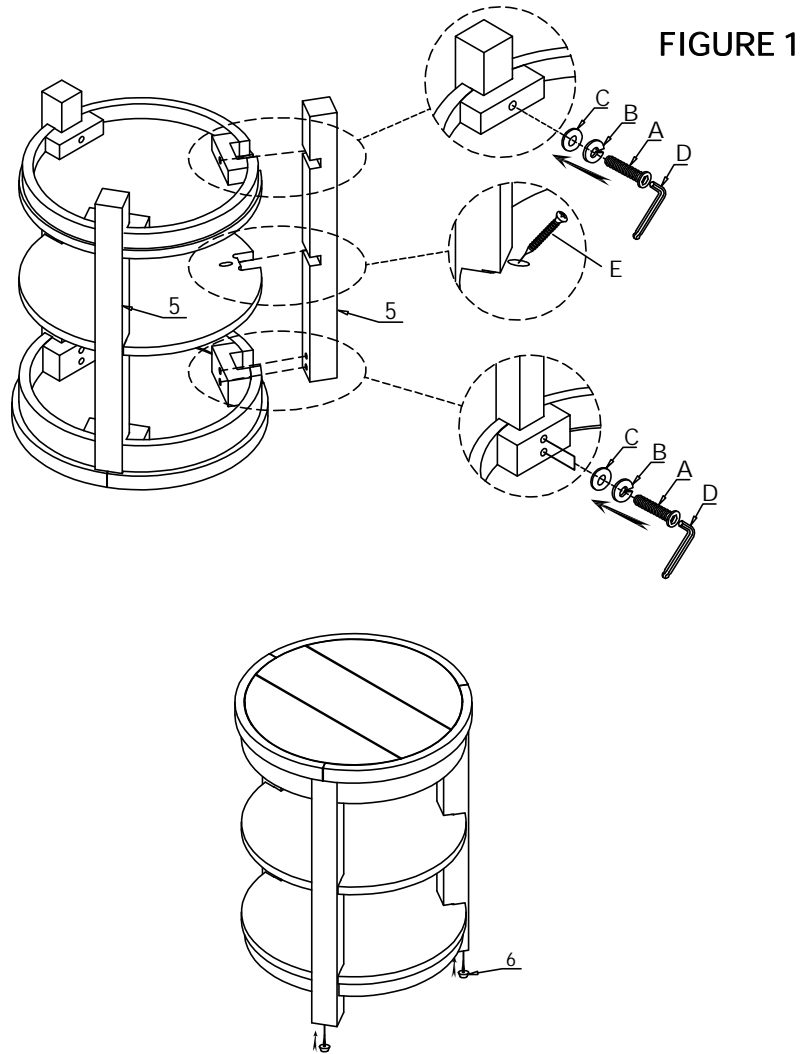




656/657-810 ROUND CHAIRSDIE TABLE



PARTS	MRP#	DESCRIPTION	Q'TY
A	1	BOLT#5/16**2"	9
B		LOCK WASHER#5/16"	9
C		FLAT WASHER#5/16**19*2mm	9
D		ALLEN WRENCH 5mm	1
E		WOOD SCREW #8*1-1/4"	3
2	2	TOP FRAME	1
3	3	SHELF PANEL	1
4	4	BOTTOM FRAME	1
5	5	LEG POST	3
6	6	FLOOR GLIDE (PRE-ASSEMBLED)	3



656/657-810 ROUND CHAIRSDIE TABLE

WARNING! Failure to follow each of the following assembly instructions precisely may result in damage to the product and / or injury to consumer.

1. REMOVE ALL PARTS FROM CARTON AND SEPARATE THEM INTO PART NUMBER GROUPS AS INDICATED ON THE PART LIST. WHEN ORDERING ADDITIONAL PARTS, INDICATE MANUFACTURER REPLACEMENT PART NUMBER (MRP#) AS WELL AS PART NAME.

2. PLACE THE TOP FRAME (2) UPSIDE DOWN ON A SMOOTH AND FLAT SURFACE. ATTACH TOP FRAME (2), SHELF PANEL (3) AND BOTTOM FRAME (4) TO LEG POSTS (5), SECURE WITH FLAT WASHERS (C), LOCK WASHERS (B) AND BOLTS (A), USING ALLEN WRENCH (D), SECURE WITH WOOD SCREWS (E) USING PHILIP HEAD SCREWDRIVER (NOT PROVIDED). FOLLOWING FIGURE 1.

3. TURN THE ASSEMBLED ROUND CHAIRSDIE TABLE UPRIGHT NOW.

ASSEMBLY IS NOW COMPLETE .

THANKS FOR YOUR PURCHASE !