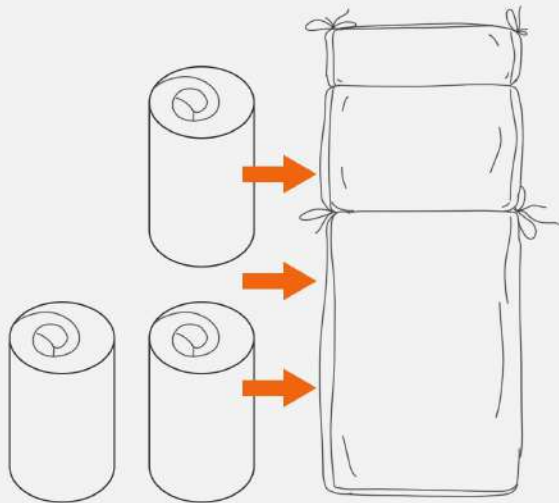
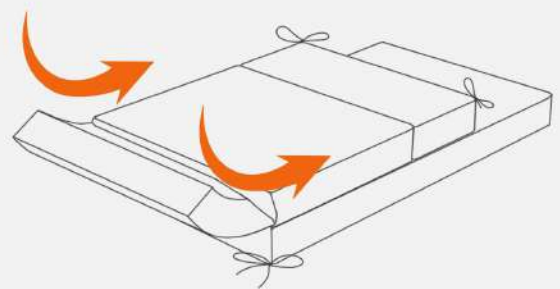


# EASY INSTALLATION



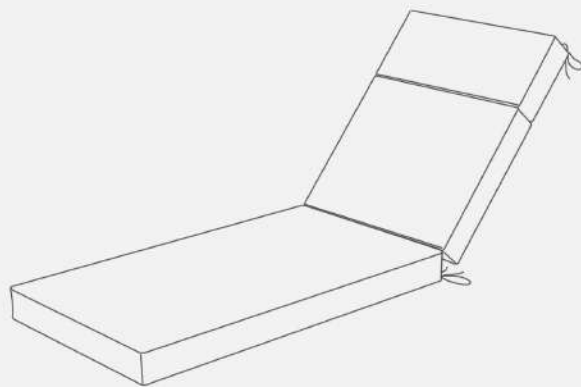
**Step 1: Unpack and check the items**

Please don't cut too deep when unboxing



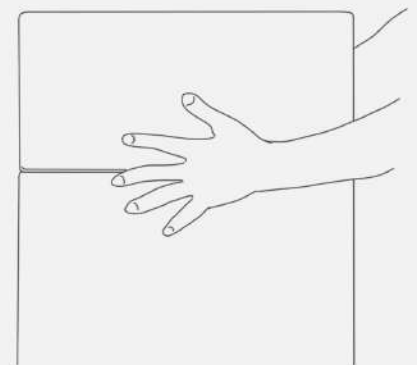
**Step 2: Assemble cushions**

Insert the foams into the cover and zip up



**Step 4: Get them back in shape**

Place in a dry, sunny spot for 24-48 hours before use



**Step 3: Pat gently**

Or use a dryer for a faster restoration