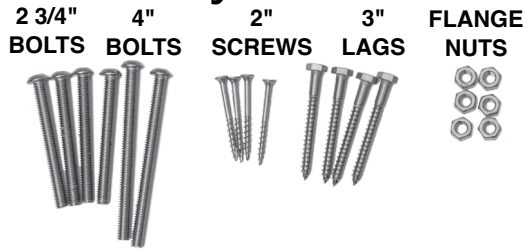


# MICAH FAN BACK SWIVEL CHAIR

## Assembly Instructions

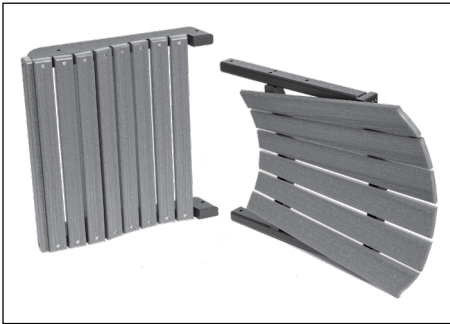


### TOOLS NEEDED

- 1/2" open end wrench
- 3/16" Allen wrench

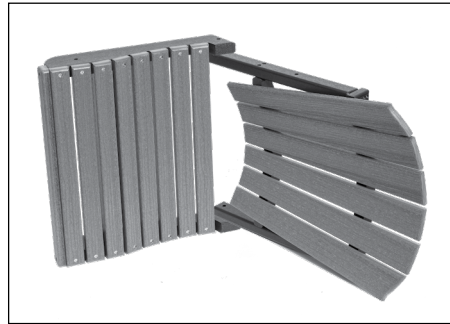
### PARTS LIST

- 1 – chair back
- 1 – chair seat
- 2 – arm rests and assemblies
- 1 – swivel base assembly
- 4 – 2 3/4" bolts
- 2 – 4" bolts
- 4 – 2" screws
- 4 – 3" lags
- 6 – 5/16" flange nuts



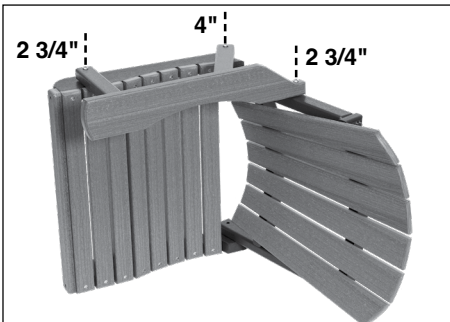
**FIGURE 1**

Lay chair back and chair seat on their side as shown.



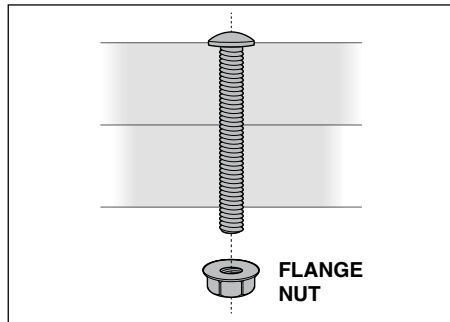
**FIGURE 2**

Align predrilled holes.



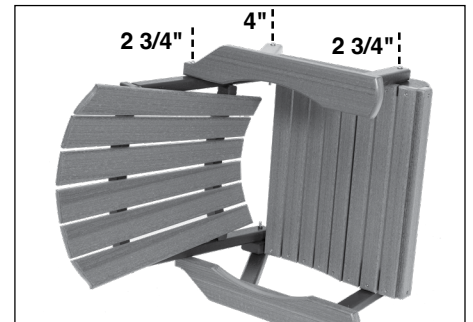
**FIGURE 3**

Place arm assembly aligning predrilled holes (as shown). Insert bolts.



**FIGURE 3-1**

Add 5/16" flange nuts to back side of seat back and seat. Tighten thoroughly.



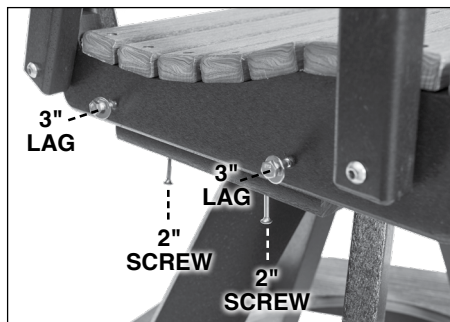
**FIGURE 4**

Repeat same process on the other side.



**FIGURE 5**

Fully assembled base.



**FIGURE 6**

Align top to base and fasten with 2" screws (from beneath) and 3" lags on each side. Tighten thoroughly.

