

# APP Manual

## 1. Software Overview

### 1.1 Overview

It is a mobile app used to control LED strips on both iOS and Android devices. Traditional control methods such as infrared, 433 MHz, 2.4 GHz, and other wired solutions are being replaced by mobile app control, which offers greater convenience, powerful features, and scalability.

Through this mobile APP, you can not only control the color, brightness and color temperature of the LED strips but also set up all kinds of fancy flash mode; Also this APP can change the light of the LED strip according to the rhythm of the music. This APP can set and control several LED strips through Bluetooth and the operation is very simple, easy to learn and easy to use.

### 1.2 Features

- Adjust color LED strips with 60,000 colors to change color and brightness and adjust monochrome LED strips to change brightness and color temperature
- Play music or turn on a sound playback device, you can let the light change the color and brightness with the rhythm of music, the music rhythm beautiful
- Inside multiple setting mode for color change and control LED strips without mobile
- Long distance control with omni-directional antenna, and many-to-many group control mode
- Once the connection is successful, connect automatically next time

### 1.3 Performance

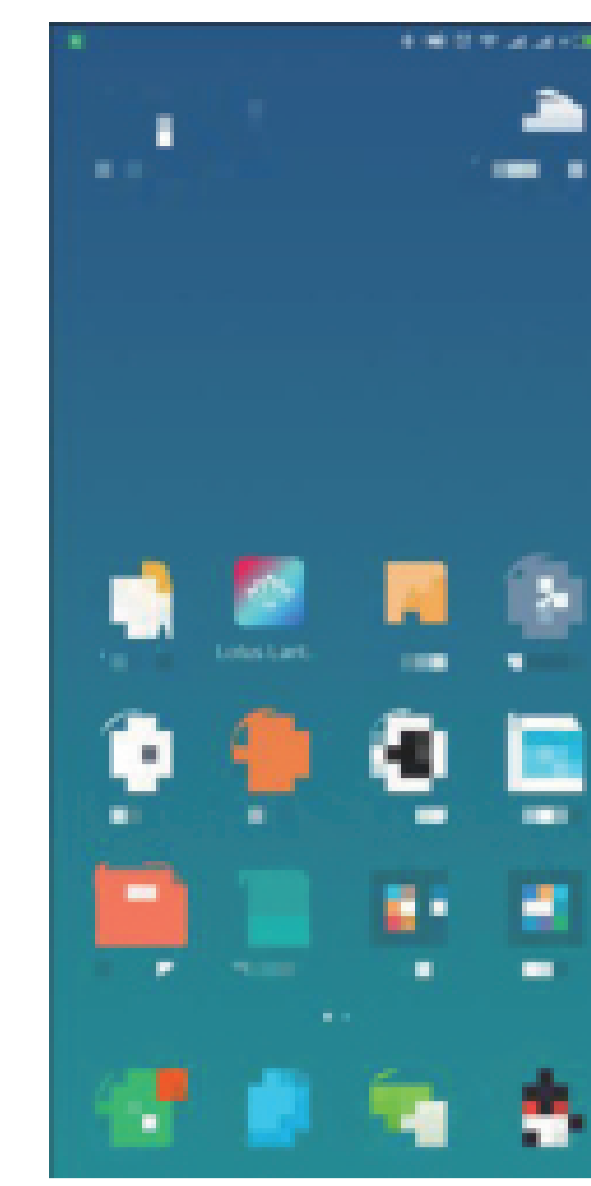
It is easy to use and highly compatible with a wide range of smartphones. After extensive testing on hundreds of devices, the app has demonstrated compatibility with over 95% of smartphones on the market. The app is lightweight and efficient, consuming minimal system resources, which allows it to run smoothly even on devices with lower specifications. It features low control latency, responsive operation, and smooth lighting transitions that are comfortable to the human eye.

## 2. Operating Environment

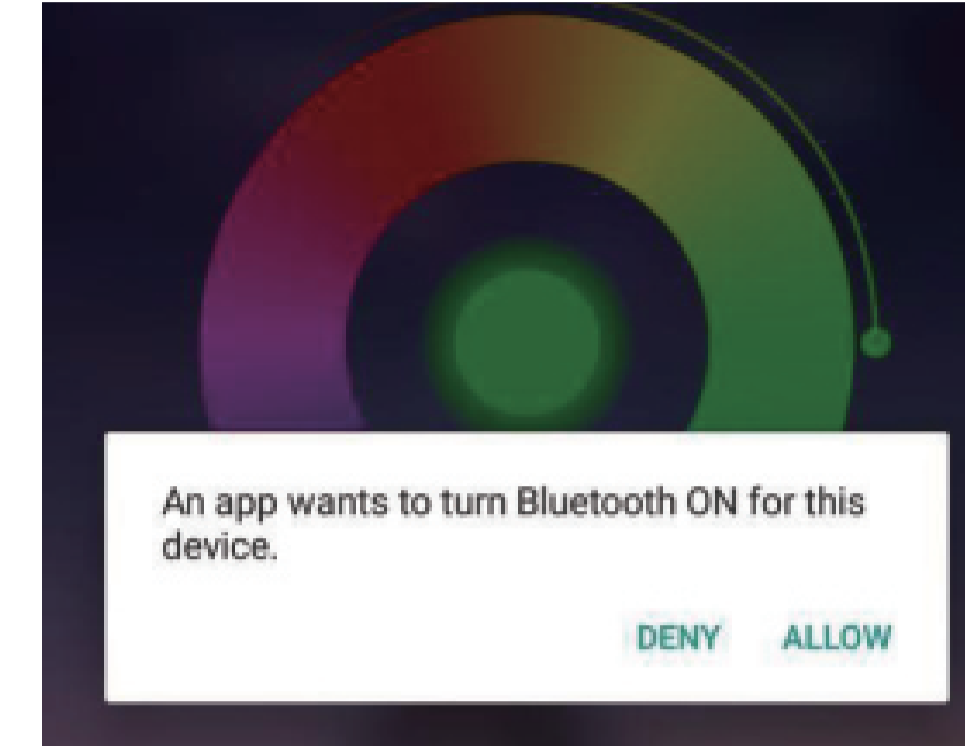
This APP program requires phones of system above Android 4.3 and iOS 8.0. Mobile phone configuration is not limited.

## 3. Instructions

Note: Android version and iOS version download and use the same method, here in the Android version as an example.



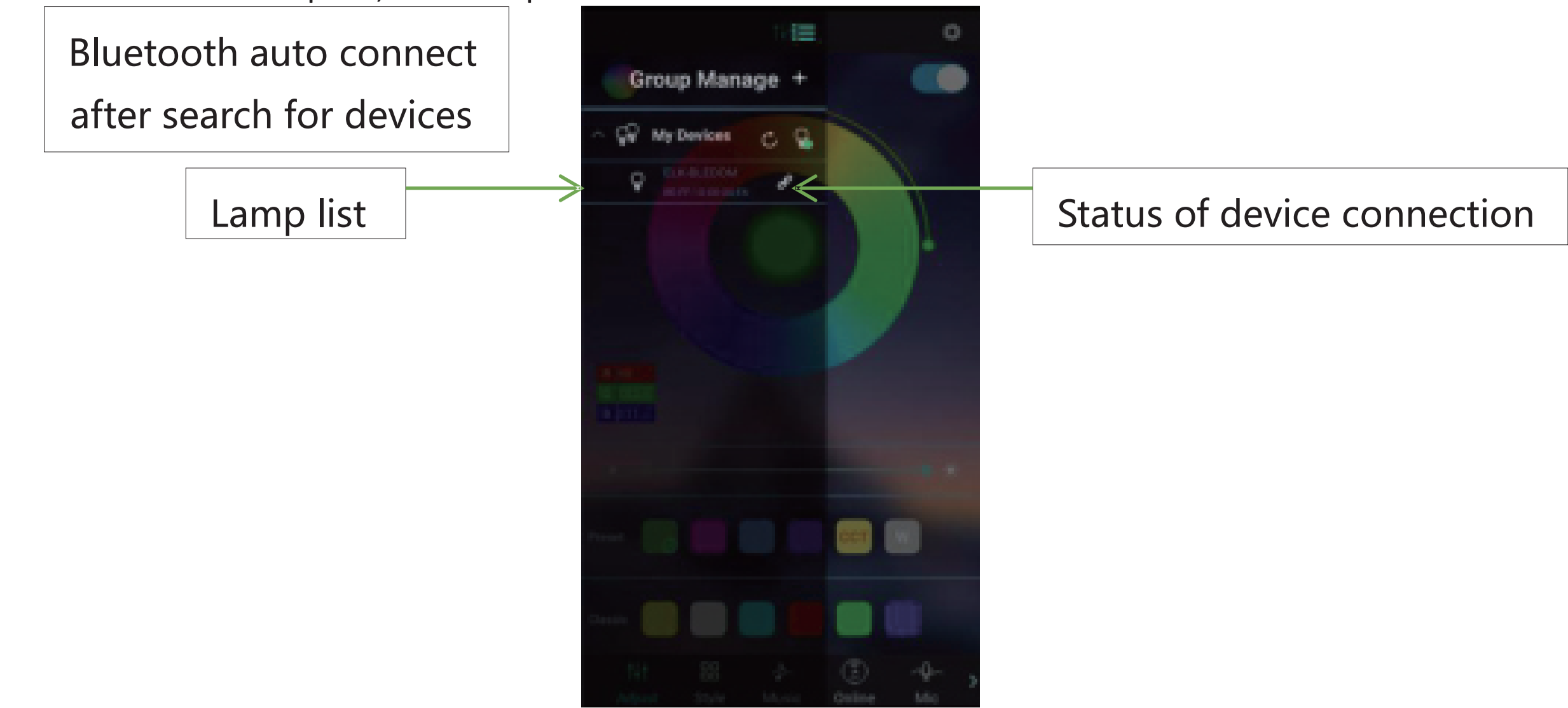
(2) After entering the APP interface, if Bluetooth is not enabled, "an application wants to enable the Bluetooth function of this device." Click [Allow]



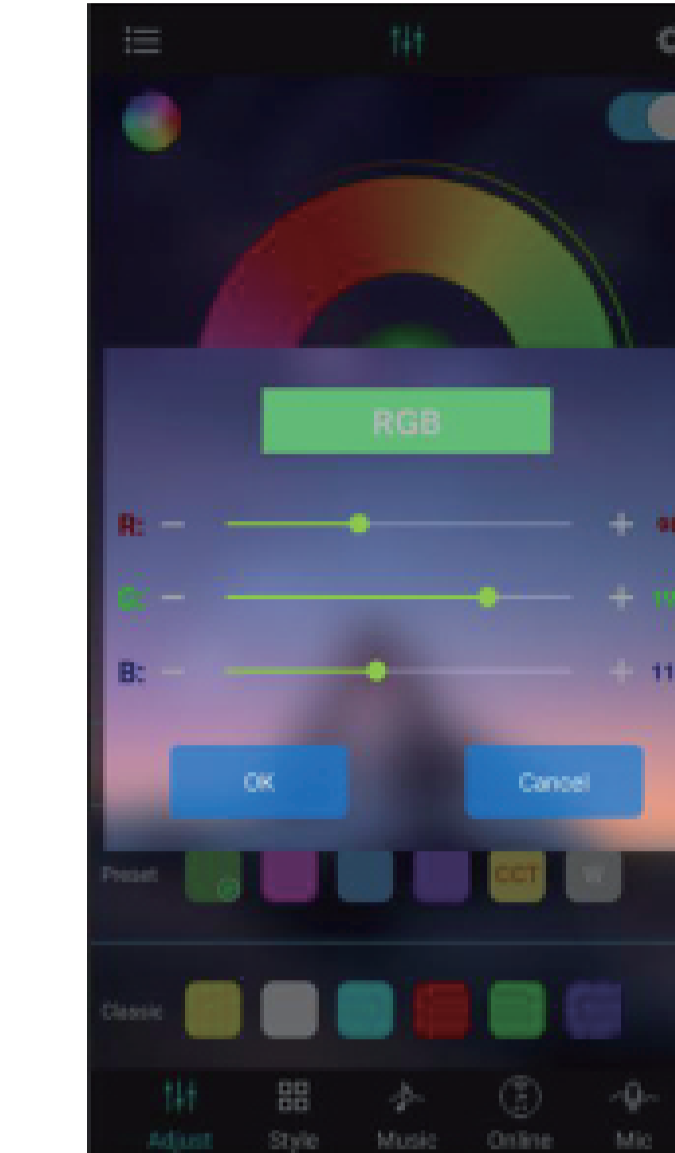
(3) switch to color and brightness interface:



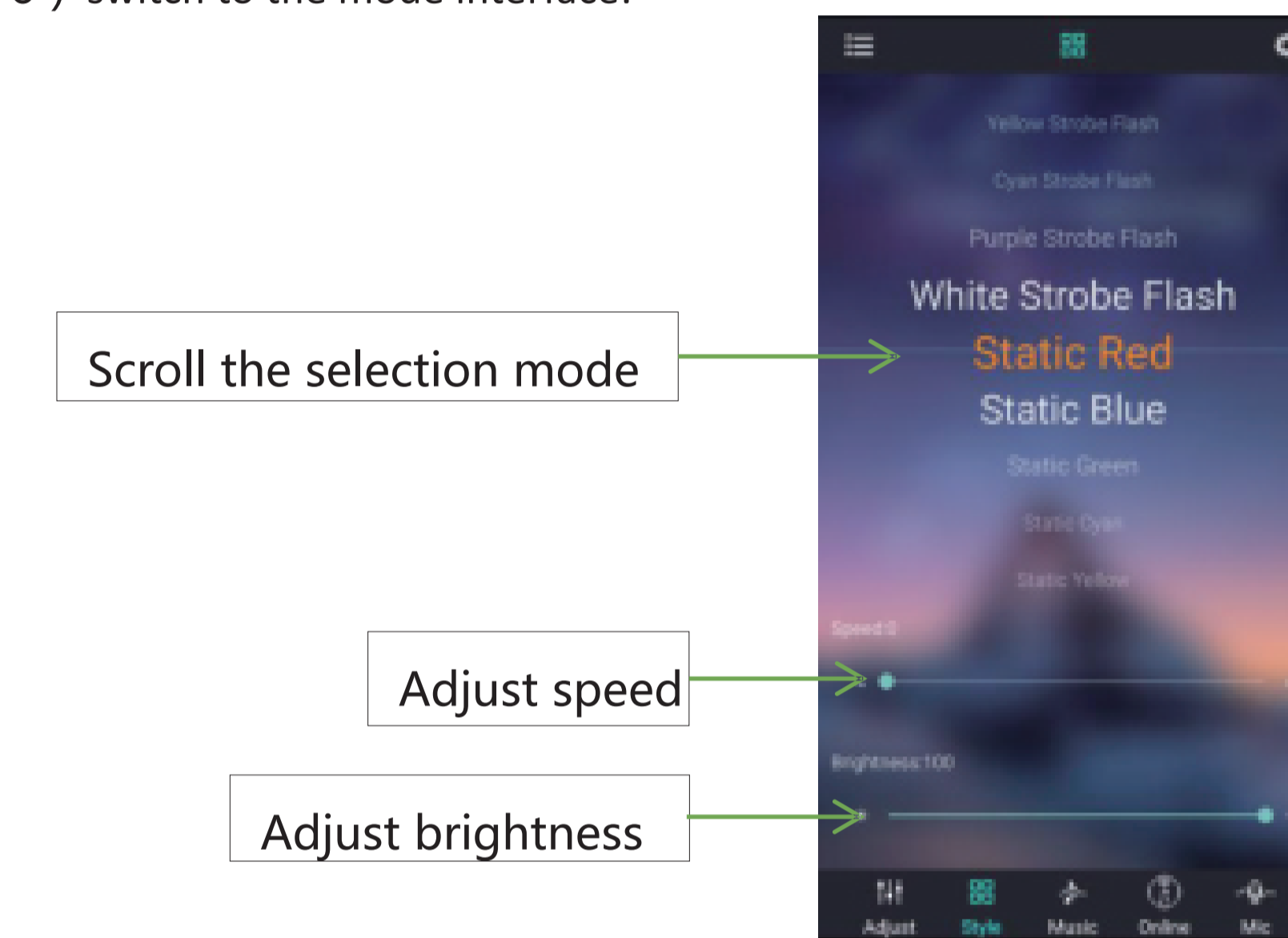
(4) click to show the lamp list, view lamp list:



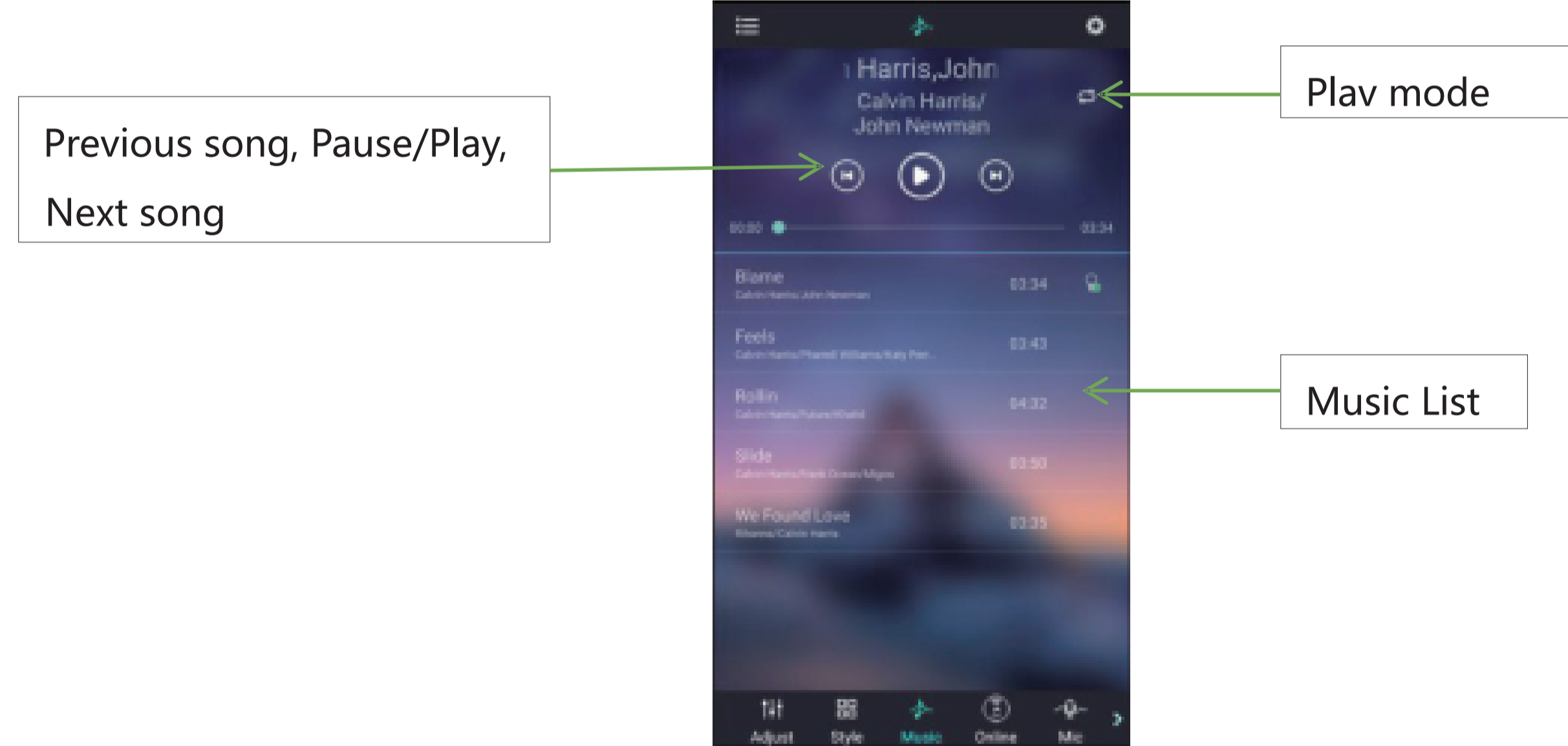
(5) Click to RGB manual adjustment view:



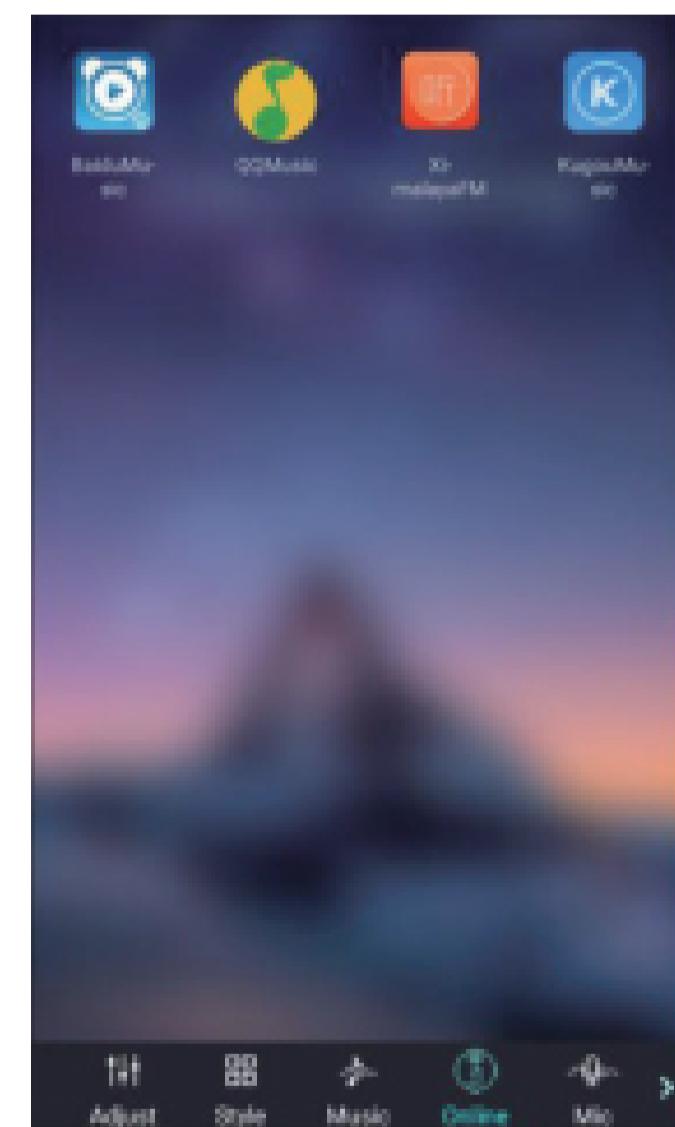
(6) switch to the mode interface:



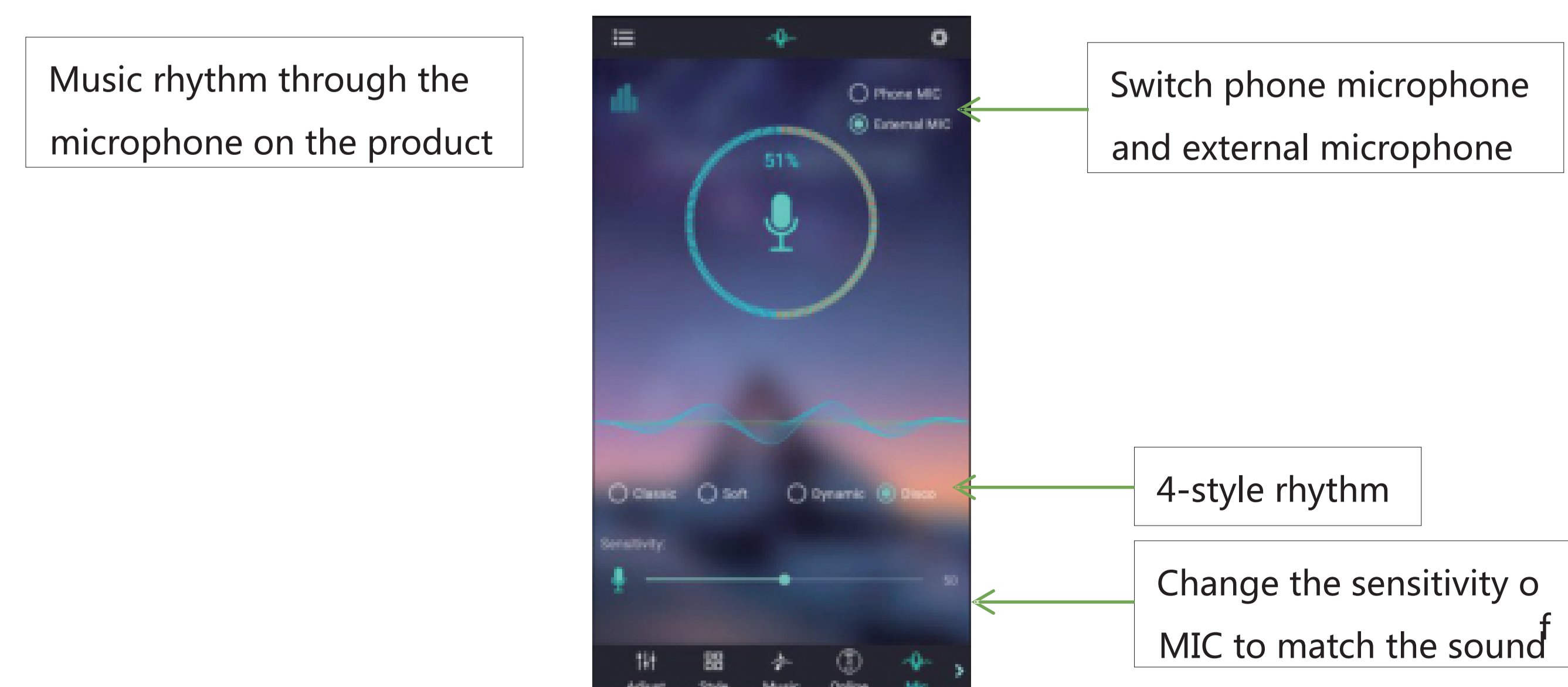
(7) switch to the music rhythm interface:



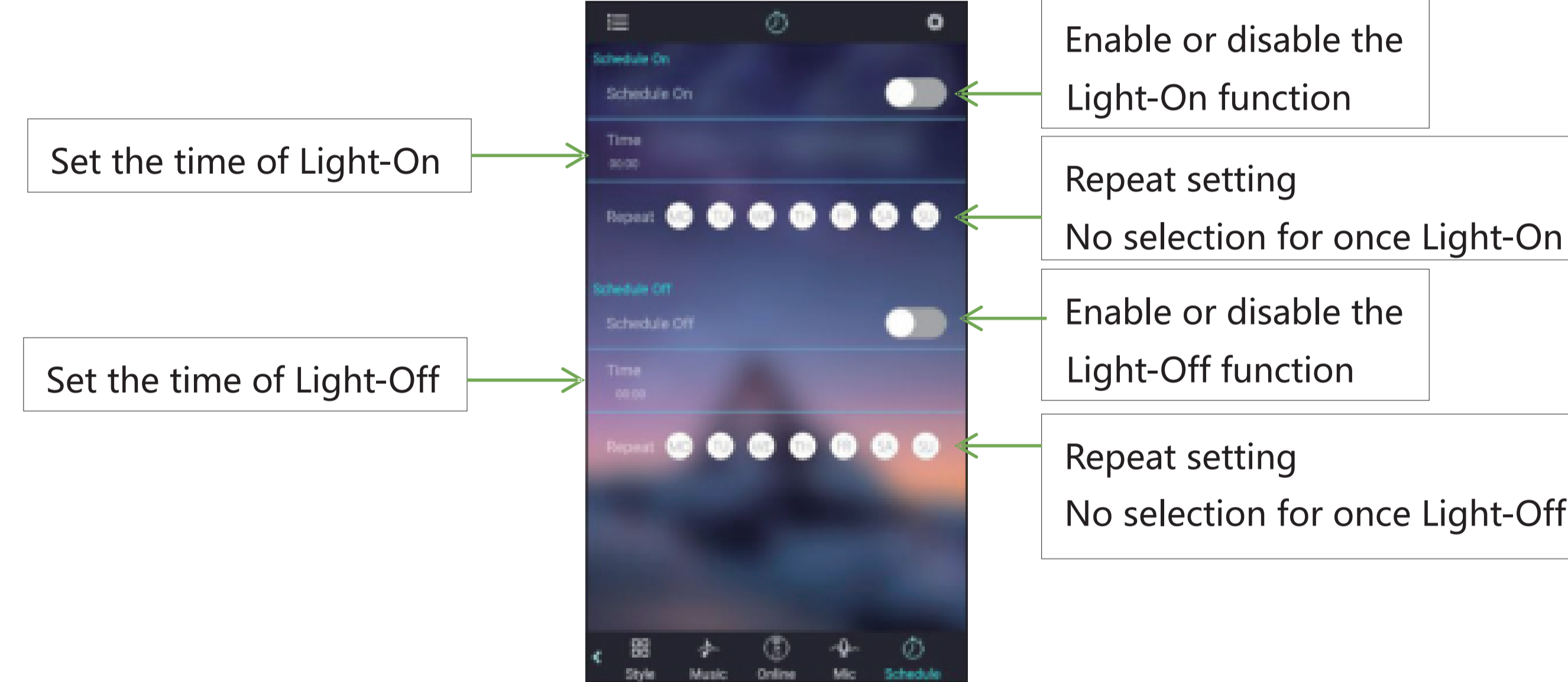
(8) Switch to the online music interface:



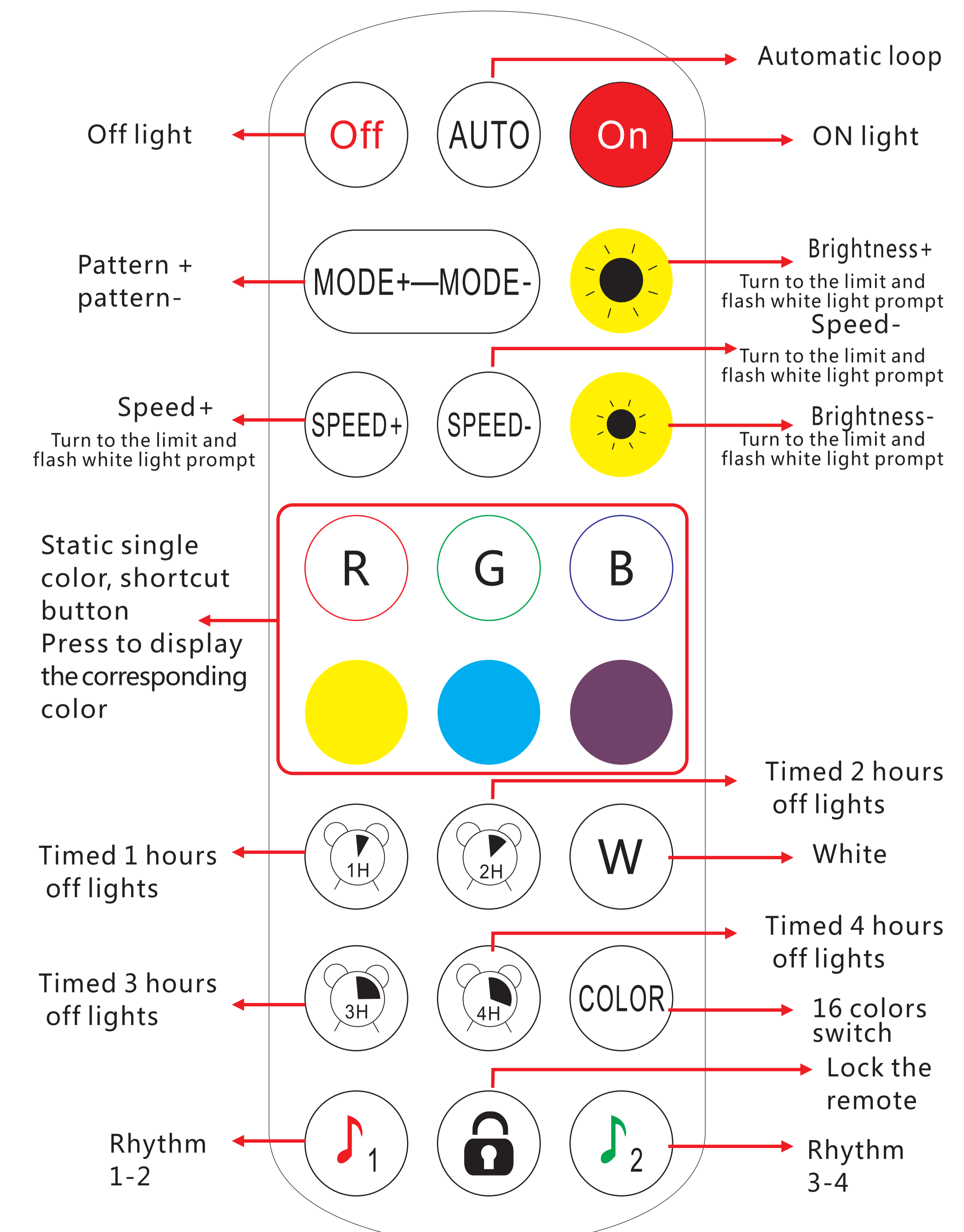
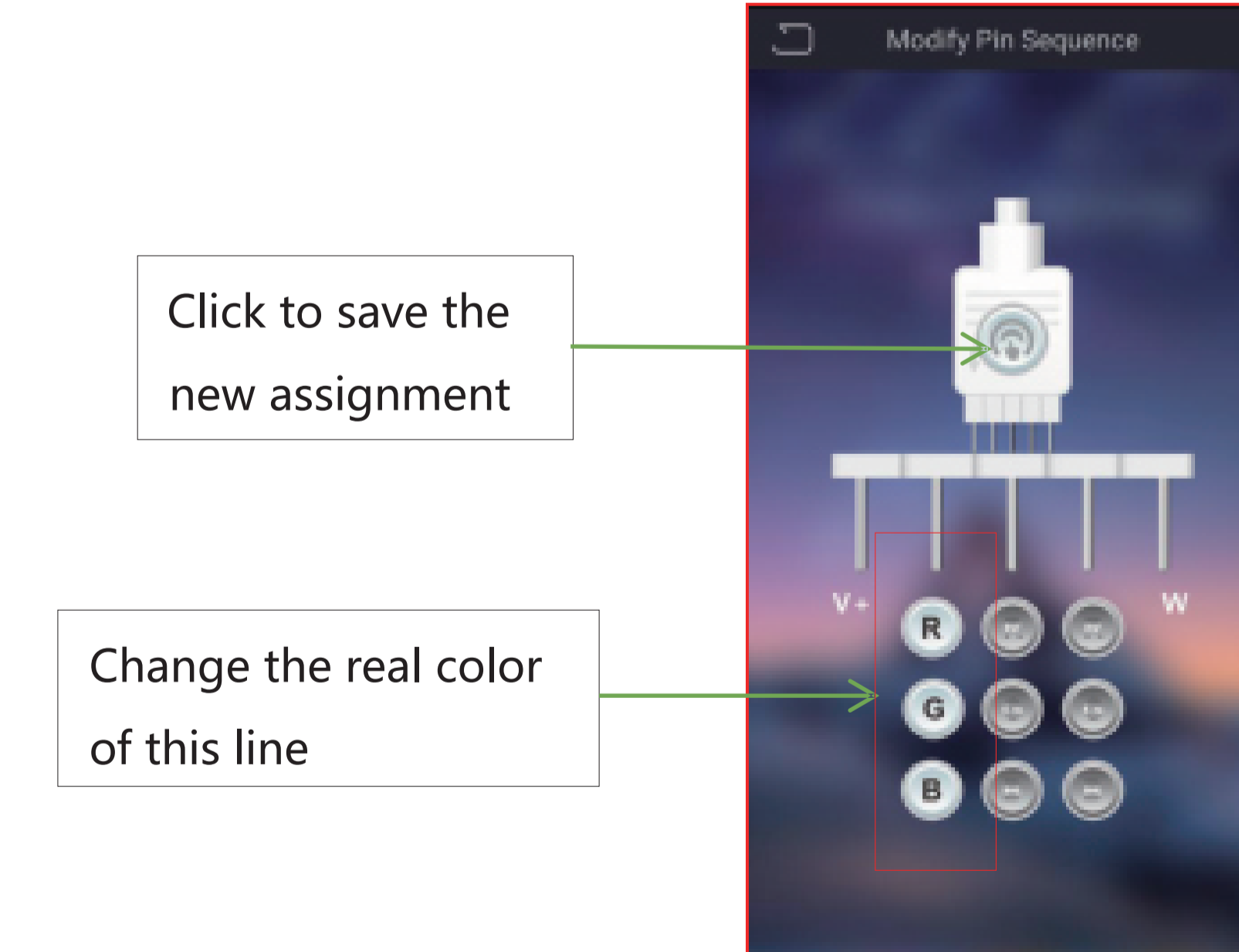
(9) Switch to the microphone rhythm interface:



(10) Switch to the schedule interface:



(11) Switch to the modify pin sequence interface:



Rhythm 1-2: Single click to switch to 1-2 rhythm mode  
Rhythm 3-4: Click to cycle through the 3-4 rhythm mode  
Remote control lock: After pressing, the remote control is locked, pressing the switch is available, other keys are invalid. After pressing once, the unlock button can be used. After the remote control is locked, press the switch to unlock the remote control.