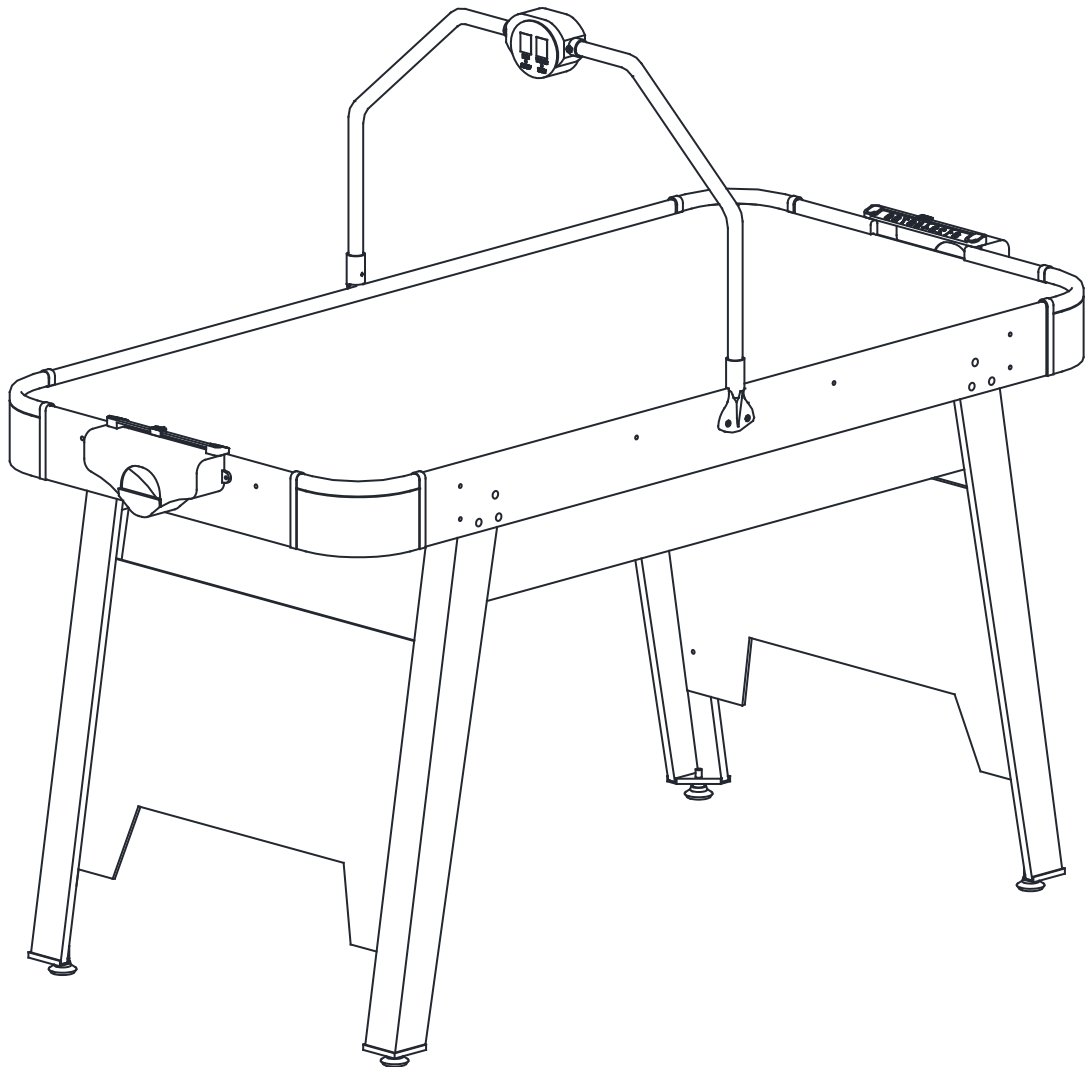
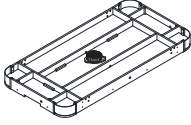
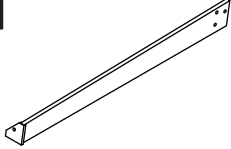
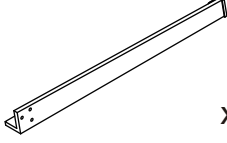
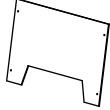
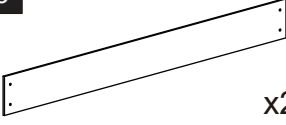




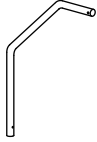
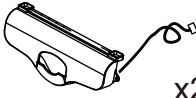

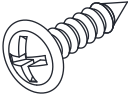
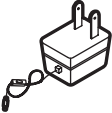
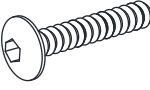

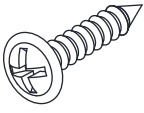
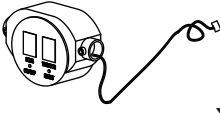
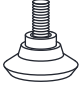


12+

# AIR HOCKEY TABLE 54IN

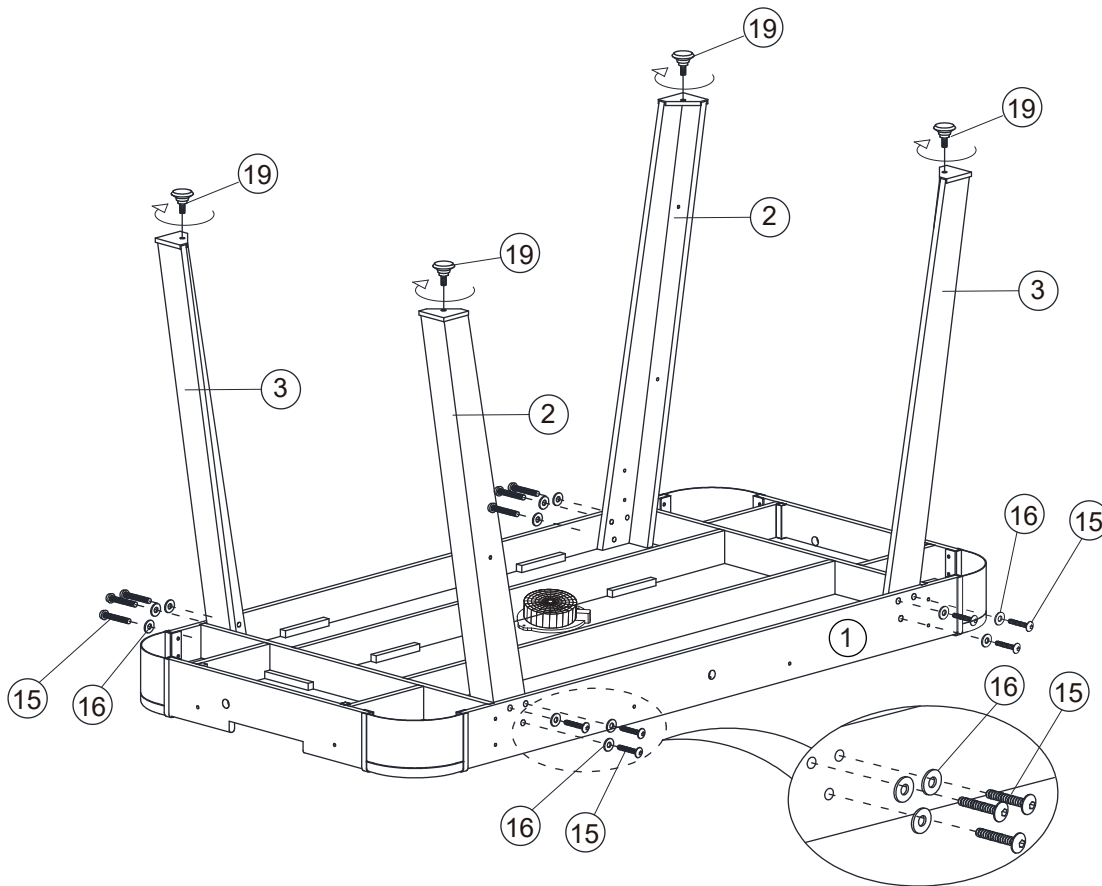


## PARTS LIST/LISTA DE PARTES

<p><b>1</b></p>  <p>x1</p>	<p><b>2</b></p>  <p>x2</p>	<p><b>3</b></p>  <p>x2</p>	<p><b>4</b></p>  <p>x2</p>
<p>Main Frame</p>	<p>Right Leg</p>	<p>Left Leg</p>	<p>End Panel</p>
<p><b>5</b></p>  <p>x2</p>	<p><b>6</b></p>  <p>x2</p>	<p><b>7</b></p>  <p>x1</p>	<p><b>8</b></p>  <p>x2</p>
<p>Side Panel</p>	<p>Pole Base</p>	<p>Allen Key</p>	<p>Round Puck</p>
<p><b>9</b></p>  <p>x2</p>	<p><b>10</b></p>  <p>x2</p>	<p><b>11</b></p>  <p>x2</p>	<p><b>12</b></p>  <p>x2</p>
<p>Pusher</p>	<p>Pole</p>	<p>Goal</p>	<p>Bolt</p>
<p><b>13</b></p>  <p>x10</p>	<p><b>14</b></p>  <p>x1</p>	<p><b>15</b></p>  <p>x12</p>	<p><b>16</b></p>  <p>x12</p>
<p>3.5x12mm Screw</p>	<p>Adapter</p>	<p>6x28mm Bolt</p>	<p>18x6.5mm Leg Washer</p>
<p><b>17</b></p>  <p>x16</p>	<p><b>18</b></p>  <p>x1</p>	<p><b>19</b></p>  <p>x4</p>	
<p>3.5x14mm Screw</p>	<p>Electronic Scorer</p>	<p>Leg Leveler</p>	

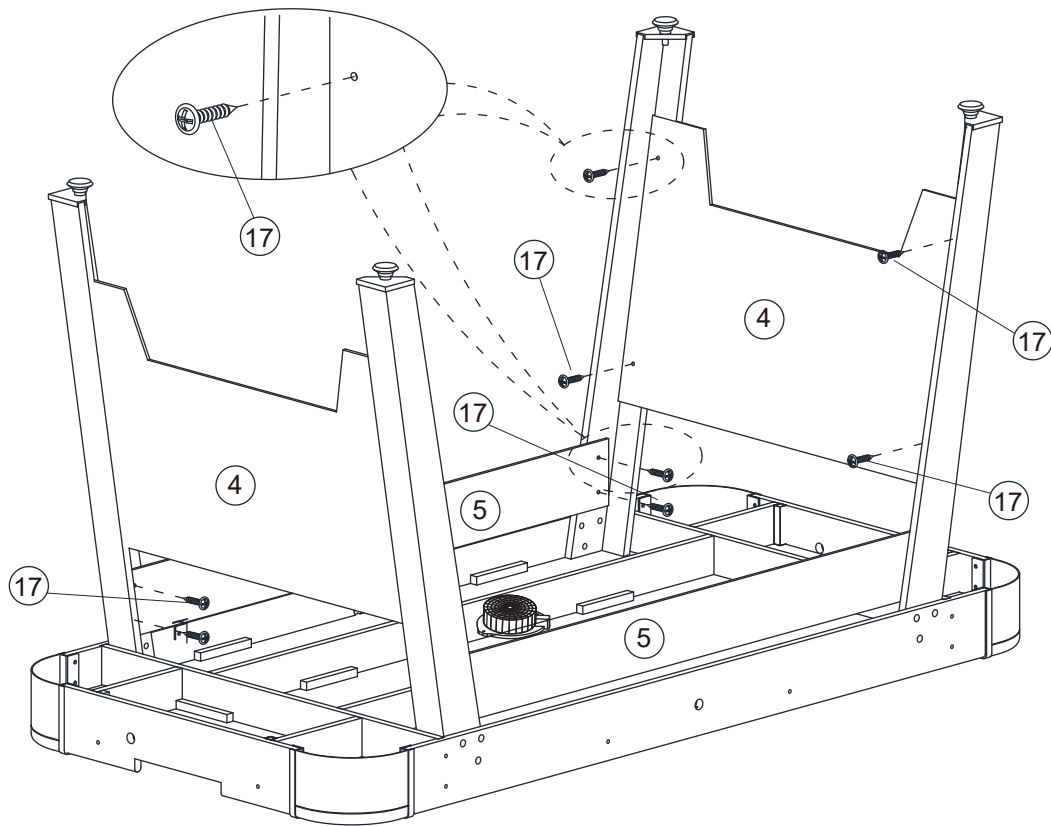
**ASSEMBLY INSTRUCTIONS:**

1. Find a clean, level place to begin the assembly of your Air Hockey Table. The table will be assembled upside down and then turned over on its legs once the assembly completed. This game table is heavy, and turning it over will require at least two strong adults.
2. Remove all the parts from the box and verify that you have all of the listed parts as shown on the parts list page. Carefully cut or tear the four corners of the box so that the bottom of the box can be used as your work surface.



**FIG.1**

3. Place the Main Frame (#1) face down on a clean and flat surface. Attach the Right Leg (#2) and Left Leg (#3) to the Main Frame using three Leg Bolts (#15) and three Leg Washers (#16) per Leg.
4. Screw the Leg Leveler (#19) to the legs.



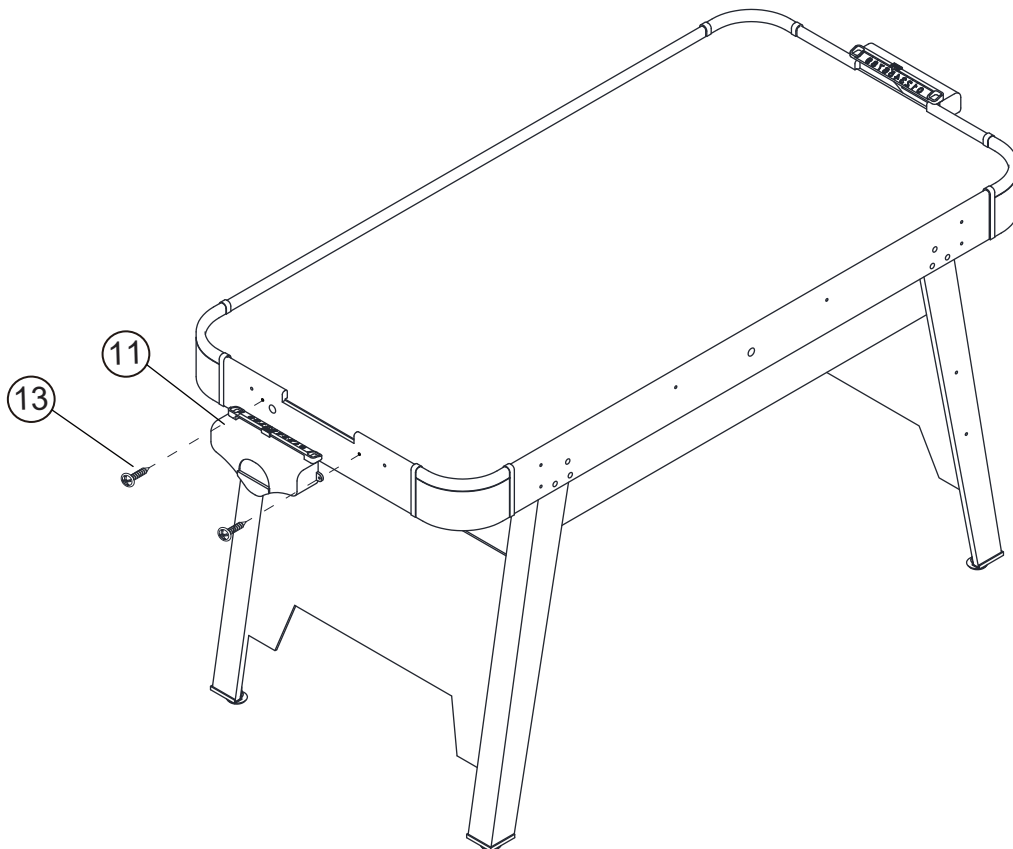
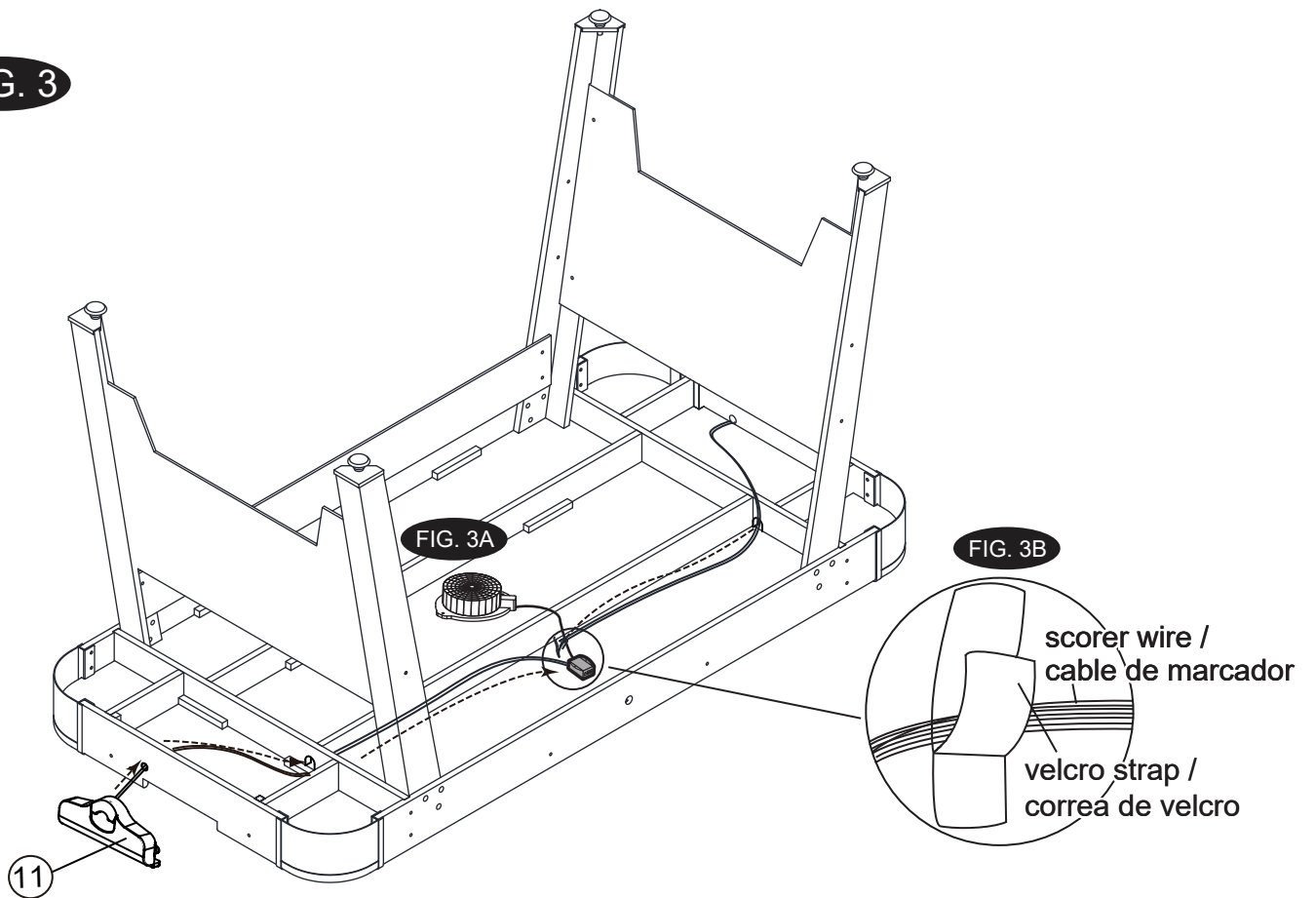
**FIG.2**

5.Connect the End Panel (# 4) with the left and right leg with screws (# 17)

6.Connect the Side Panel (# 5) with the left and right leg with screws (# 17)

7. Lift the table assembly from the floor with two adults,turn it over and set table on its leg in the location where you will play.Go back and make sure that all connections are tight.

**FIG. 3**



This power unit is intended to be correctly orientated in a vertical or floor mount position.

FIG. 4

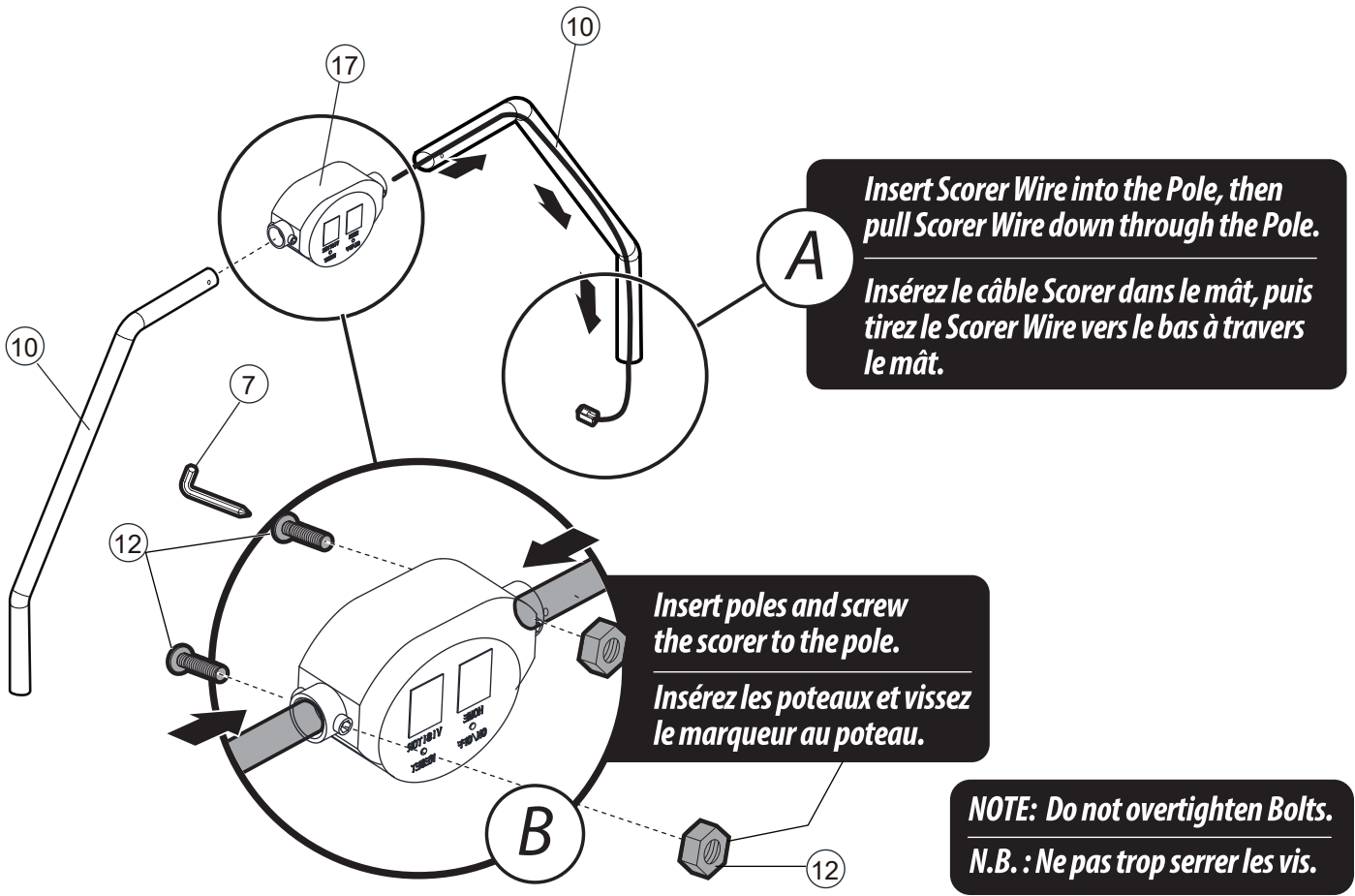
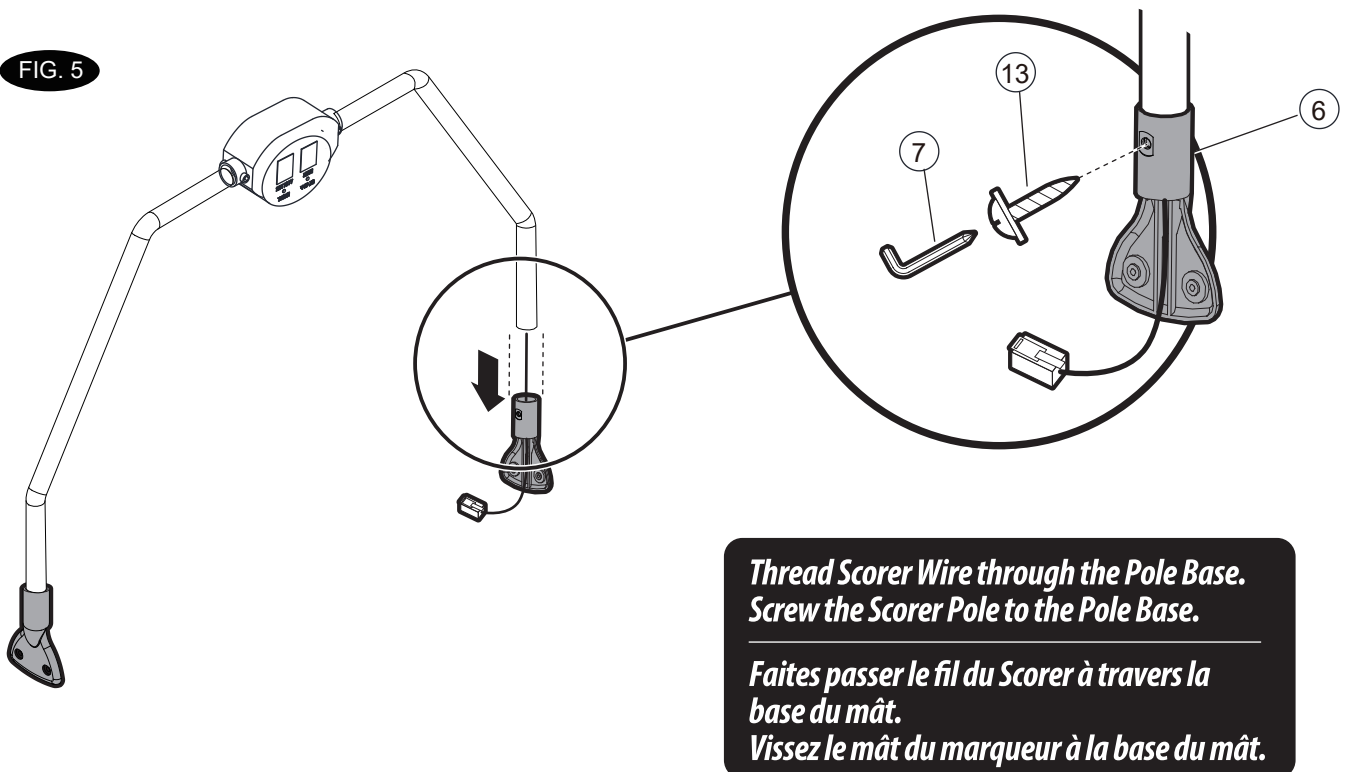
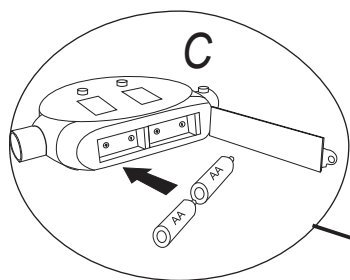


FIG. 5

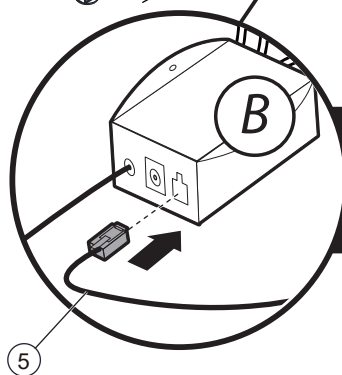
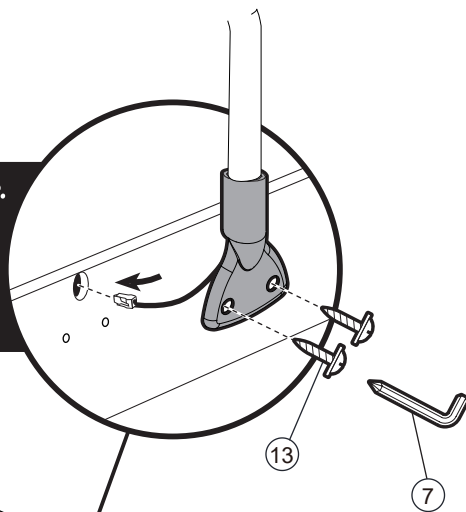


**FIG. 6**

Requires 2 "AA" size batteries (not included).  
Do not mix old and new batteries.  
Do not mix alkaline, standard (carbon-zinc),  
or rechargeable (nickel-cadmium) batteries.



**A**  
*Feed Wire through apron with Wire Hole.  
Screw the Pole Base onto table.*  
*Faites passer le fil dans le tablier à  
l'aide du trou prévu à cet effet.  
Vissez la base du poteau sur la table.*



**B**  
*Plug Scorer Wire to  
the Control Box.*  
*Branchez le fil dans  
le boîte de contrôle.*

# ELECTRONIC CONNECTIONS CONNEXIONS ÉLECTRIQUES

