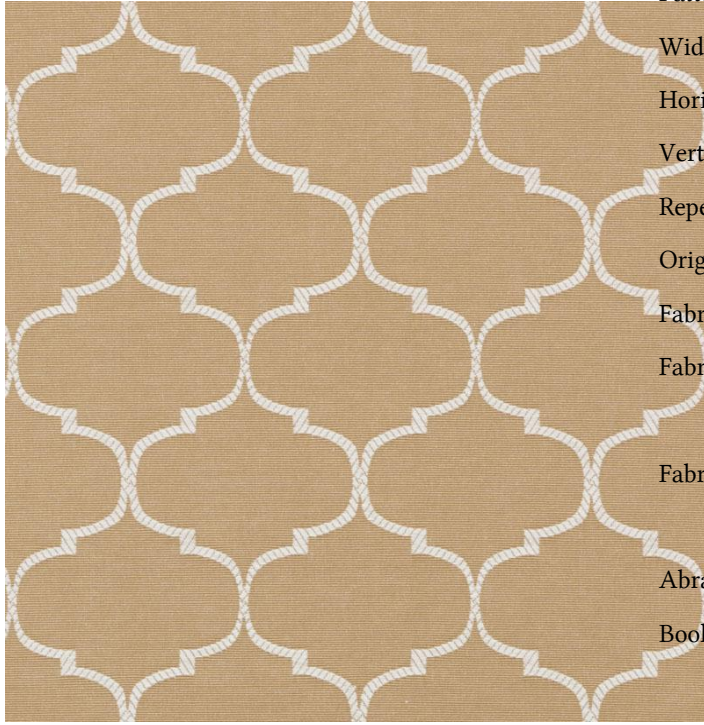




Fabric Detail for:32818 | 115-clay



Pattern:	32818 115-clay
Width:	54"
Horizontal Repeat:	9.000"
Vertical Repeat:	9.000"
Repeat Direction:	Up The Roll
Origin:	Taiwan
Fabric Grade:	01
Fabric Contents:	55% Cotton 45% Polyester
Fabric Performance:	NFPA 260 UFAC - Class 1
Abrasion:	15,000 Double Rubs
Book Name:	STRAWBERRY-PEONY-TANGERINE