

Specifcation & Installation Guide

Features

- Furniture grade water proof plywood, protected with several Coats of polyurethane.
- Drawers front with vertical lines.
- 45 degree handle with Unihopper hinge.
- 1 pc wood shelf and 2 pcs removeable glass shelves
- Side cabinet could be reversible installed

Package Dimension

12" 14-1/8" X 11-4/5" X 50"

Colors / Finishes

Matte White - 01

Light Grey - 15

Night Blue - 26

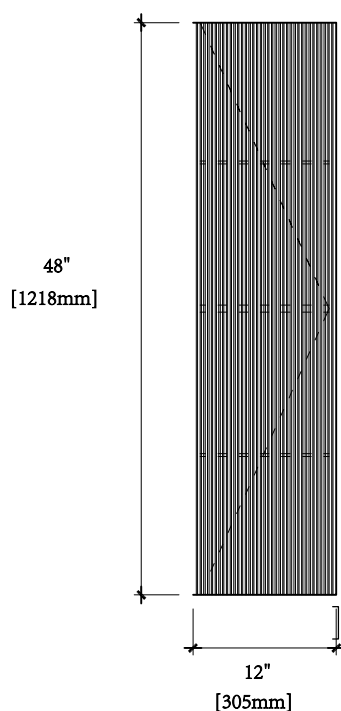
Aventurine Green - 27

Gross Weight

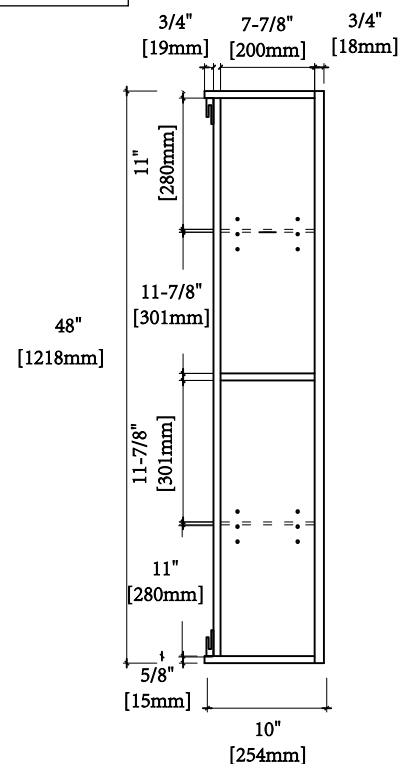
12" 45.64LBS


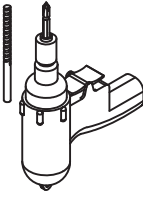
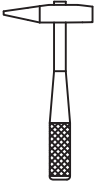

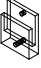
48"

47" X 18" X 17-2/3"



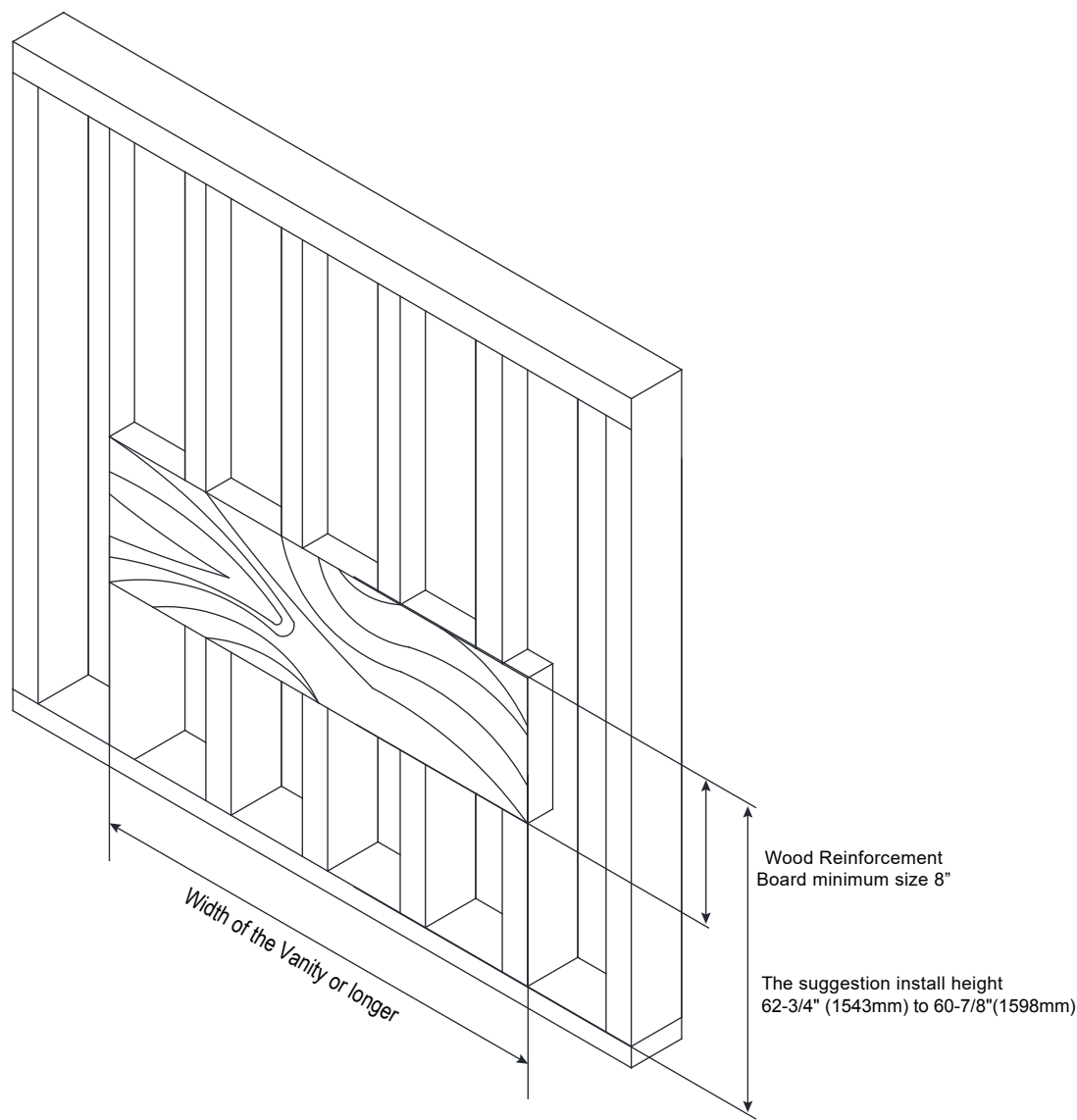
Side View



Hardware				Tools (not includes)	
No.		Draw	Qty		
A	Anchors		6 pcs		
B	Lag Bolt (5CM)		6 pcs		
C	Leveling Bracket		2pcs		

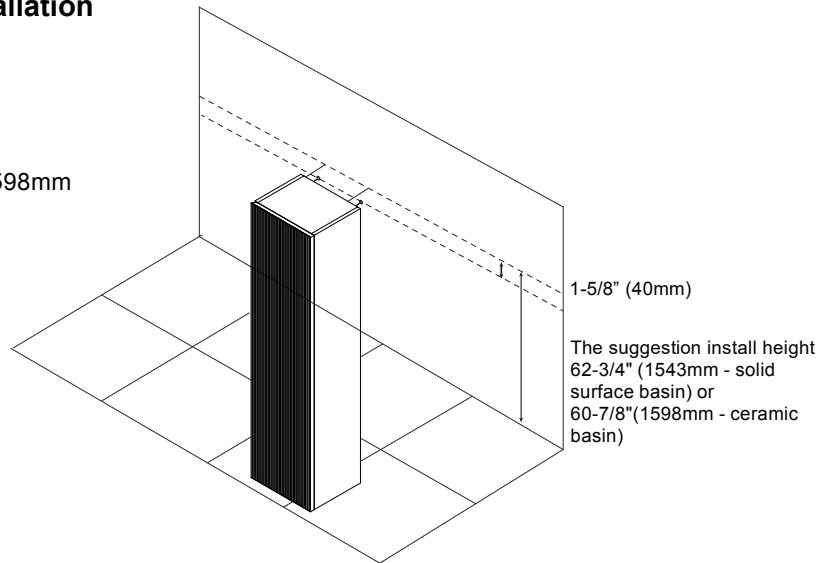
Wall Preparation

The typical dimensions shown will result in side cabinet height of 62-3/4" (1543mm - solid surface basin) or 60-7/8"(1598mm - ceramic basin). Depending on the sinks selected, the total height will vary from 62-3/4" (1543mm) to 60-7/8"(1598mm). If an alternate height is desired, adjust the rough-in and backing material heights using the dimensions provided.



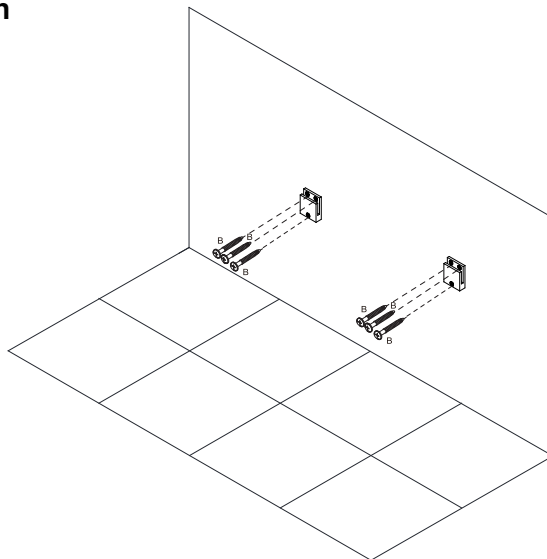
STEP 1. Cabinet positioning and installation

- The suggestion height of vanity installation is 62-3/4" (1543mm - solid surface basin) or 60-7/8"(1598mm - ceramic basin).
- The height of Leveling Bracket Installation is 59-3/8" (1508mm - solid surface basin) or 61-1/2"(1563mm - ceramic basin) .



STEP 2. Leveling bracket installation

- Install leveling bracket after determining the height of vanity.



STEP 3. Hang the cabinet on the leveling bracket and adjust it horizontally

Place vanity on leveling bracket, Leveling brackets are only to level the vanity. They are not designed for permanent support. Vanity needs to be secured into the wood backing material.

