

# Mirror introduction



## Function Indicator



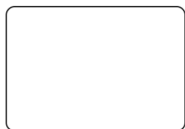
Short press the switch : on/off  
Quick press the switch :switch the light color  
Long press the switch :Infinitely adjust the brightness

## Installation Instruction

Before Installation

- \* Please make sure that the installed wall is a load bearing wall.
- \* Please attention to avoid wires or water pipes when drilling.

## Product and accessories



Mirror\*1



Expansionscrew\*2



Screw\*2

## Tools Needs (not included in the package)



Pencil



Electric Drill



Hammer



Tapeline

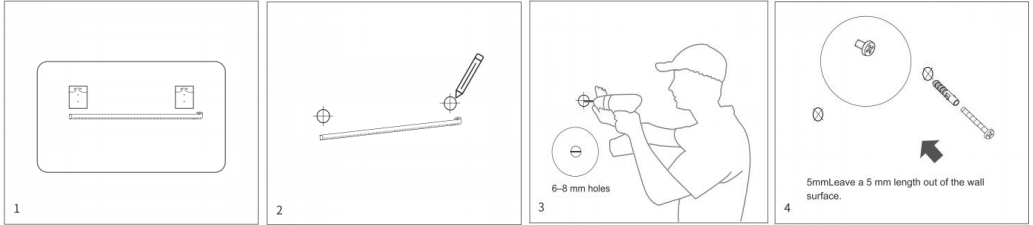


Level Ruler



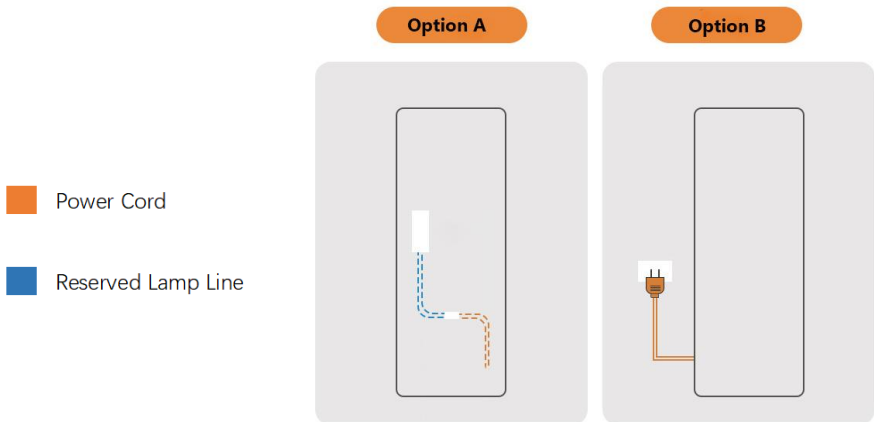
Screwdriver

# Mirror introduction



1. Measure the hanger spacing Measure the distance between 2hangers with a tape measure
2. Mark drilling locations Determine the specific locations ofdrilling with a tape measure, andmark it out with a pencil.
3. Drill holes with a percussion drill Drill 6-8 mm holes in the wall atmarked locations with a percussiondrill.
4. Put an expansion tube into eachhole and put a screw into each tube Strike expansion tubes into drill holes with hammer and put screws into expansiontubes with a screwdriver. Leave a 5 mlength out of the wall surface

## Wiring Instructions



Cut out the plug and the reserved wire connection port, which can be hidden on the back of the mirror

The mirror plug is directly plugged into the wall socket for use (the socket cannot be on the back of the mirror)