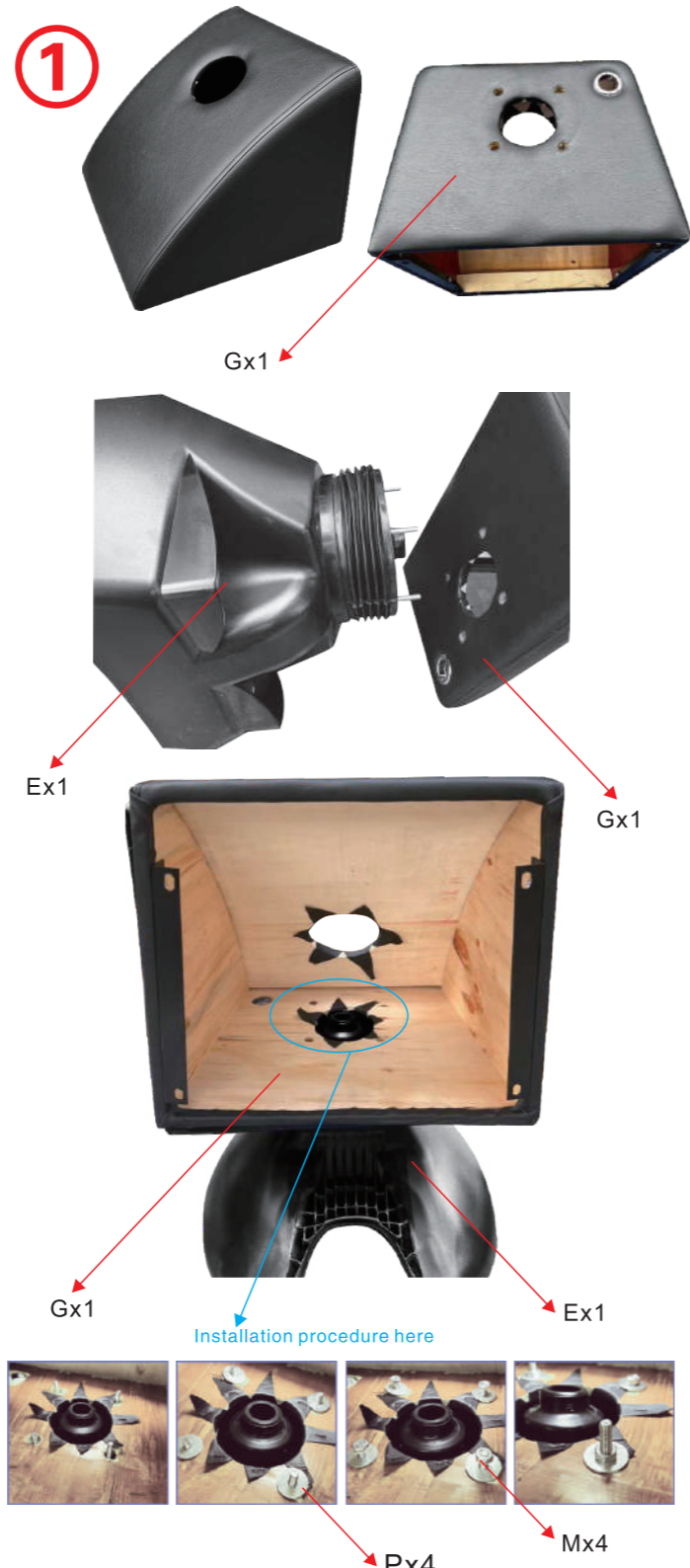
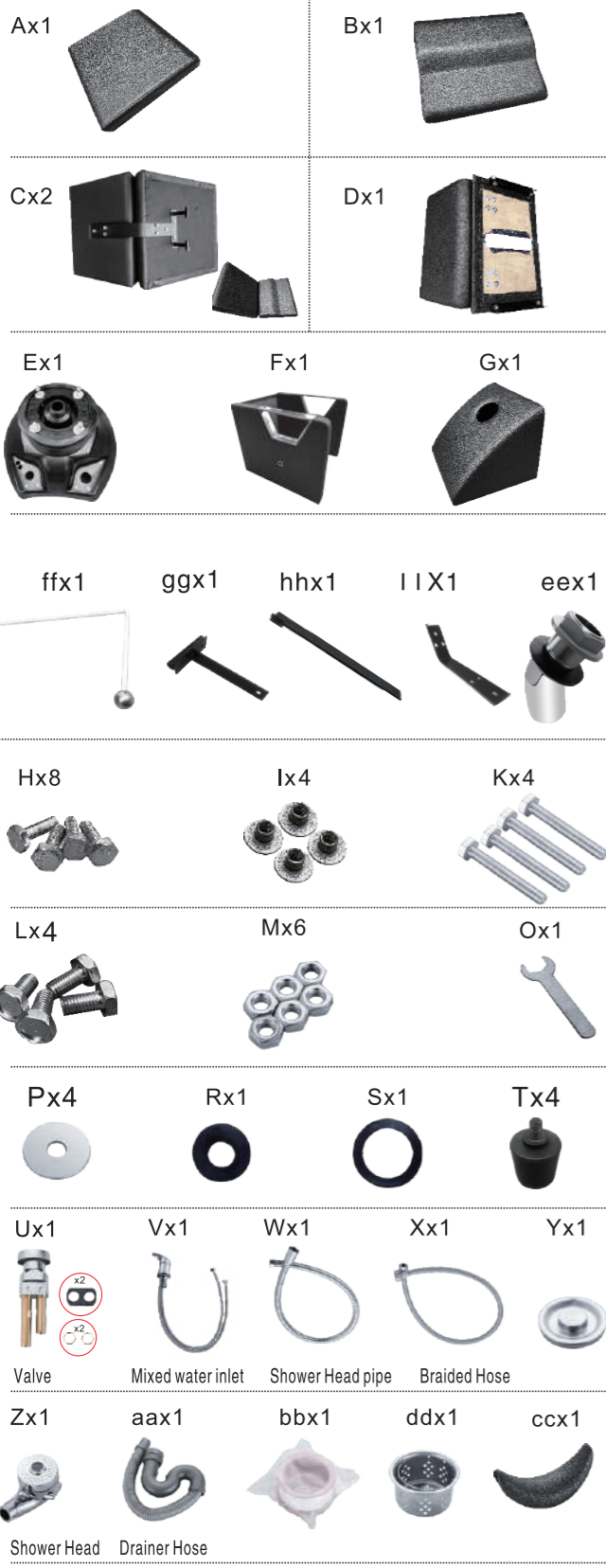
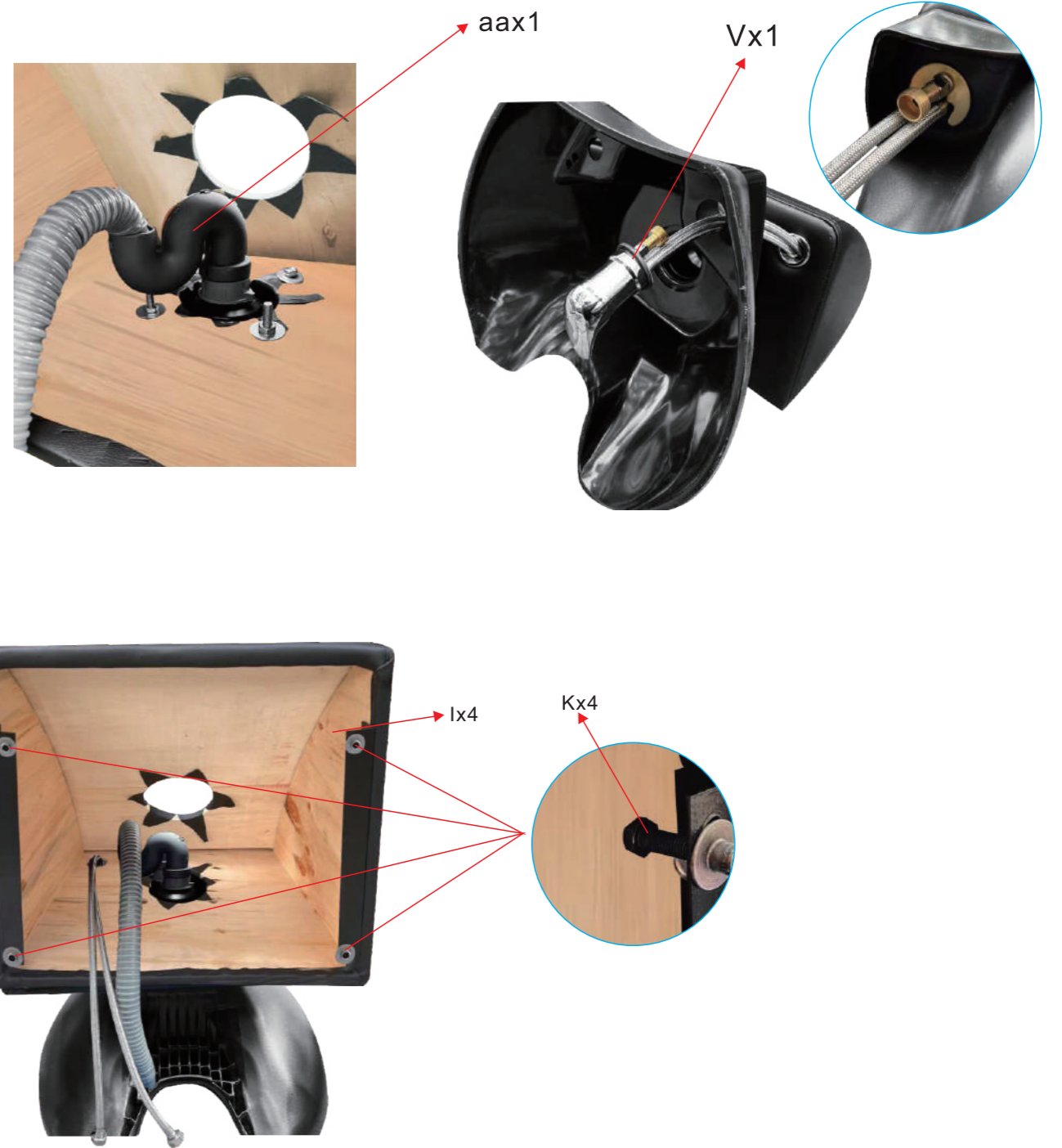


# Instruction



1. Use nuts (M) and gaskets (P) respectively to place product (E) and product (G) as shown in the figure above. Fix as shown, and screw tightly as shown.

2



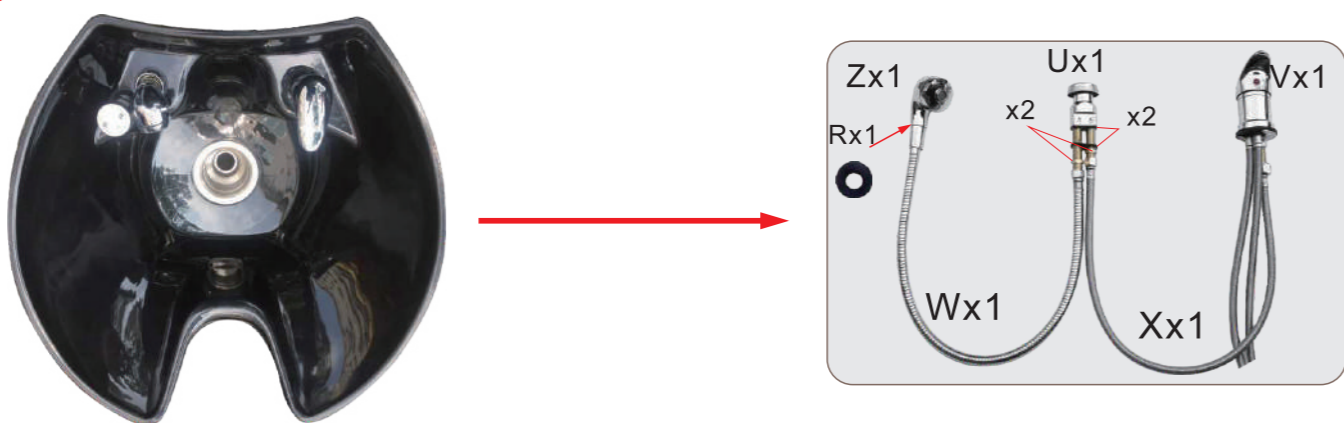
2. Insert product (aa) into product (G) of the assembled first step, as shown in the figure, and insert product (V) into the hole of product (E), as shown in the figure. Insert the gasket and tighten the screws. After installation, insert the (K) product into the four corner holes of (G) as shown in the figure and tighten it with (I)

3

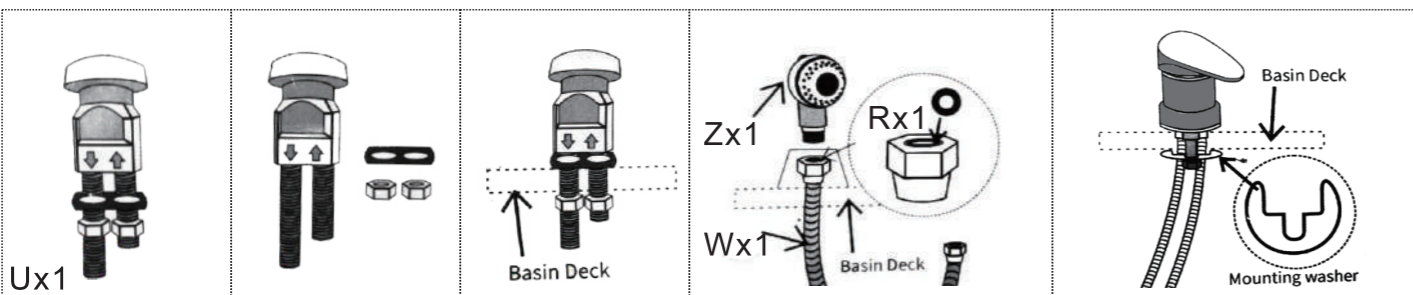


3. Connect the product assembled in step 2 to the butt insertion hole of product (F) with gasket (P), as shown in the figure above, and tighten with screw (M).

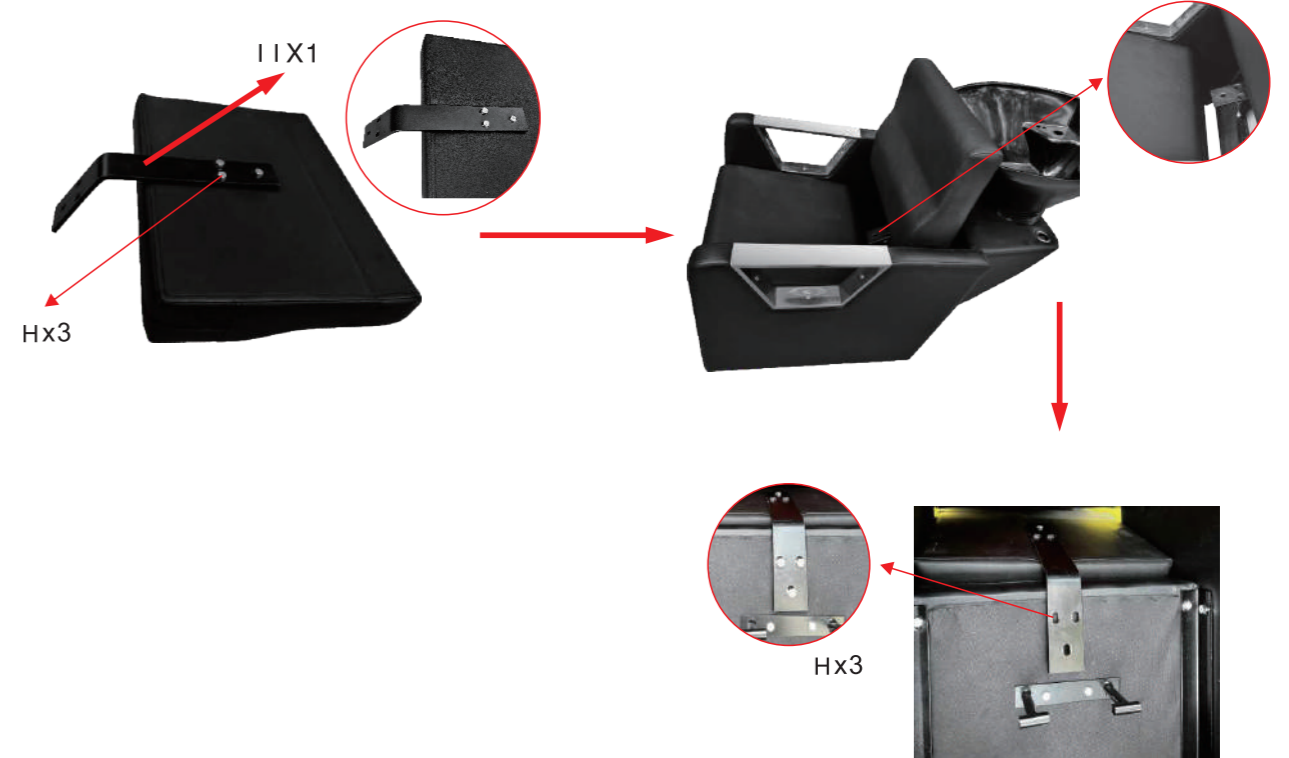
4



4-1. Screw down the two nuts of valve (these nuts are self-contained), then tight the Valve (U) and Basin Deck (ee) with these two self-contained nuts  
 4-2. Inset Rubber washer (R) then connect the Shower Head Pipe (W) with Shower Head (Z), put the Shower Head with pipe in to Basin Deck, And at the last, connect the end side of Shower Head pipe (W) with Valve (U) as picture shows

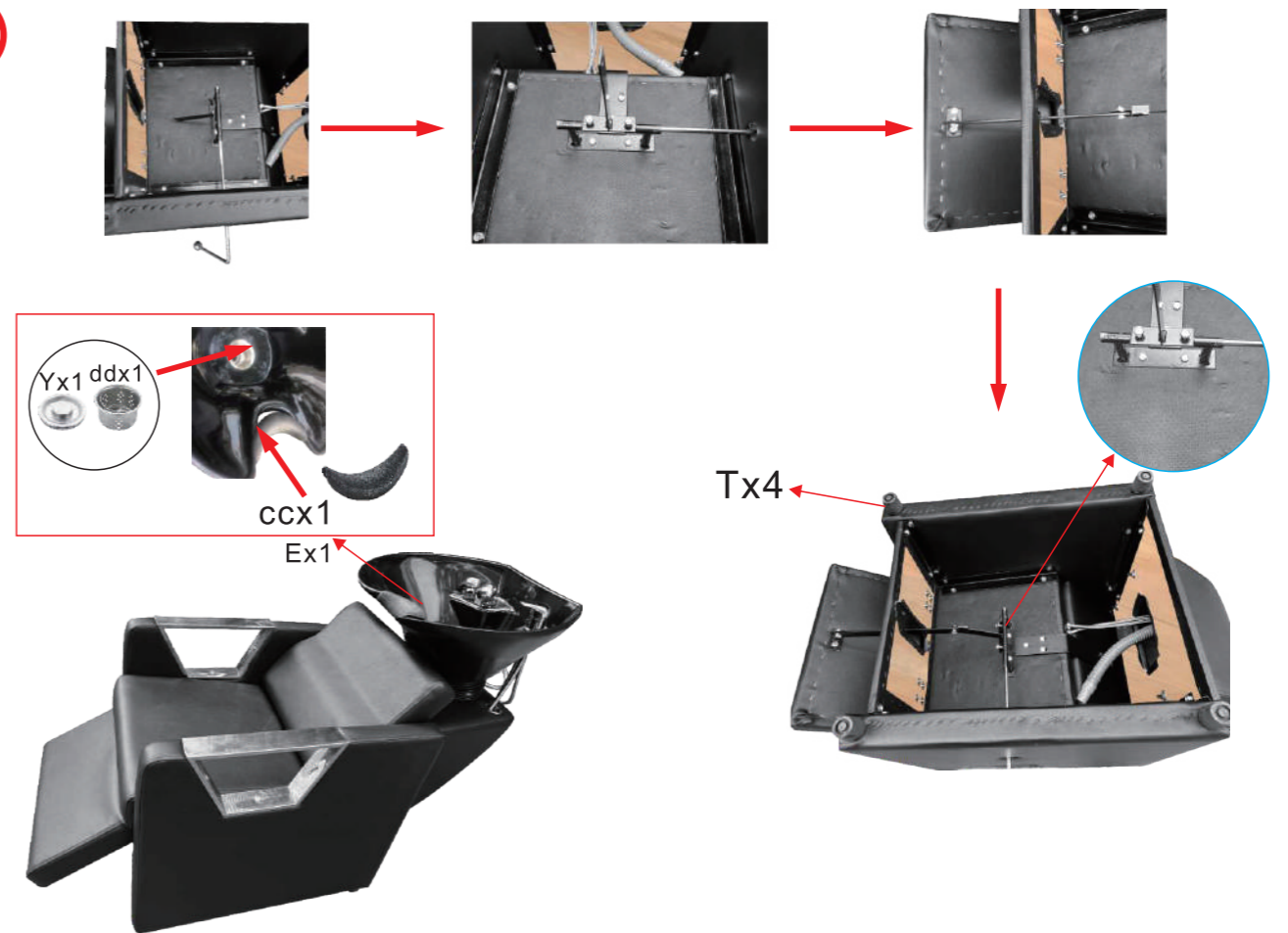


5



5. Fasten product (I) on product (B) with screw H as shown in the picture, and then insert product (B) into the assembled product in the third step as shown in the picture. Then fix the other side with screw H as shown in the figure, and complete the above steps.

6



6. Insert product (ff) into product (C) in the fifth assembled step, and connect product (C) and product (D) with product (hh), and assemble as shown in the figure above. At the same time, install the product (T) respectively in the positions shown in the figure. At the same time, product (cc), (Y), and (dd) are installed on product (E) successively. Complete the complete installation as shown in the figure