

# PACKAGE CONTENTS

5\*25mm Expansion rubber  
plug \*4pcs



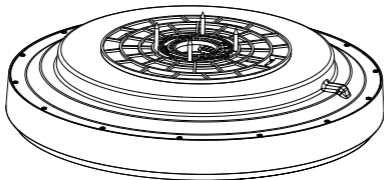
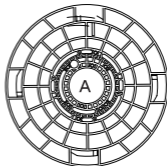
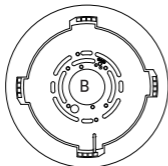
ST4\*30mm Screw \*4pcs



ST4\*20mm Screw \*2pcs



Stainless Steel Security Cable



# IMPORTANT SAFETY INSTRUCTIONS

Category	Specific Instructions
Pre-Installation Preparation	Ensure the mobile device is running iOS 17 or later (iOS) or Android 12 or later (Android). Connect to a 2.4GHz Wi-Fi network; 5GHz networks are not supported.
Electrical Safety	Always turn off power before installing or servicing the light. Use only replacement parts recommended by the manufacturer. The light must be installed in a circuit with a wall-mounted isolation switch. Read all instructions and safety information before installation. Disconnect power, remove fuses, or turn off circuit breakers before installation.
Usage & Maintenance	1. Supervise children when using the appliance. Children aged 8+ and individuals with reduced capabilities require guidance. 2. Supervise children during cleaning/maintenance.
Compliance	Ensure electrical connections comply with local laws and the National Electrical Code (NEC). Hire a qualified electrician if unfamiliar with wiring (or consult DIY manuals). Install in a location with unobstructed blade rotation and at least 7 feet above the floor. Use a metal junction box secured directly to the building structure to support the light's weight (minimum 35 lbs).
Professional Installation	Hire a qualified electrician for installation if unfamiliar with wiring. Secure all connections to prevent Sky Light detachment.

This table organizes critical safety information into clear, concise categories (e.g., compliance with U.S. electrical codes, child safety, and professional guidance) to help users prioritize and follow instructions effectively.

# INSTALLATION

## TOOLS NEEDED (NOT INCLUDED)

Essential Tools for a Successful Installation:



Ladder

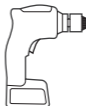


Screwdriver



Wire Stripper

Optional Tools:



Drill

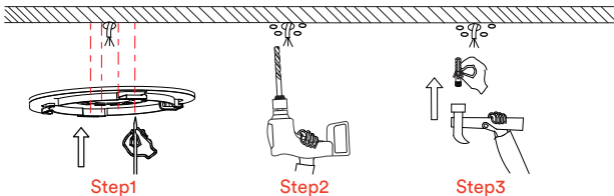


9/64" Drill Bit



**WARNING:** To avoid possible electrical shock, before installing your ceiling light, disconnect the power by turning off the circuit breakers to the outlet box associated with the wall switch location.

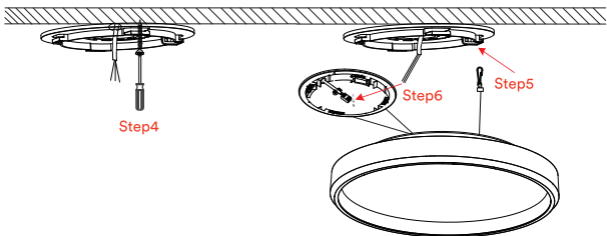
## METHOD A: HARDWIRED CEILING INSTALLATION



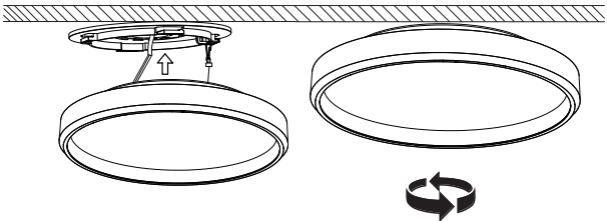
**Step1** Remove the plastic mounting plate and position its B side facing the ceiling. Mark the mounting holes on the plate.

**Step2** Drill holes at the marked points using an 8mm drill bit.

**Step3** Insert the plastic expansion anchors from the accessory kit into the pre-drilled holes.

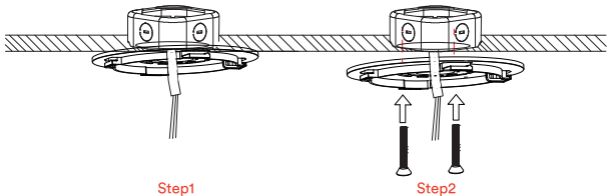


- Step 4** Secure the plastic mounting plate to the ceiling using screws, with the B side facing up.
- Step 5** Secure the installation auxiliary rope to the plastic mounting bracket;
- Step 6** Before connecting the light fixture wiring, turn off the power supply. Connect the power cables as follows:  
(black) L live wire / (white) N neutral wire / (yellow-green) ground wire;



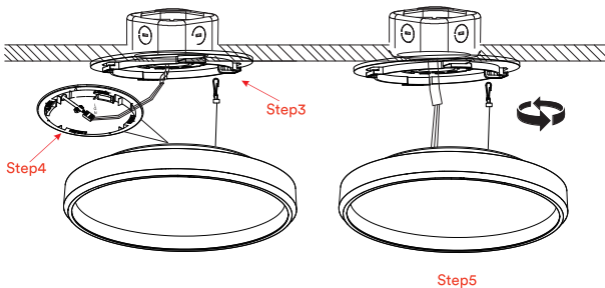
- Step 7** Align the fixture with the plastic mounting plate clips, then rotate the fixture clockwise until it snaps into place.

## METHOD B: JUNCTION BOX INSTALLATION (Compatible with 2 3/4"–4" J-box)



**Step1** Turn off power at the source before installation, and make sure the junction box is securely mounted.

**Step2** Remove the plastic mounting plate. Align the B side with the pre-installed box, rotate to find the mounting holes, and secure with screws.



**Step3** Secure the installation auxiliary rope to the plastic mounting bracket.

**Step4** Connect the power cables as follows: (black) L live wire / (white) N neutral wire / (yellow-green) ground wire.

**Step5** Align the fixture with the plastic mounting plate clips, then rotate clockwise until it snaps into place.

### What You Need:

- A Wi-Fi router supporting the 2.4GHz and 802.11b/g/n bands. 5GHz is not supported.
- A smartphone running iOS or Android.

1. Download the App from the App Store or Google Play.
2. Register a account. (Note: Please select your region and country.)
3. Connect. (NOTE: The products can't connect to 5GHz networks. )

### Steps:

1. Turn on your smartphone's Bluetooth;
2. Open the App, In the top corner of the Devices screen, click "+" and select "Add Device" to confirm that the device is paired.
3. Each time the device without distribution network is powered on, confirm the light is breathing or blinking pairing mode; If not, you need to use the switch to reset: on-off-on-off-on;
4. Find the device, choose Wi-Fi and enter password, press "Next". Click "Add", and wait patiently. After that, click "Done", and the device is successfully added to the App.

## Unable to connect the light to App

- Ensure the downlight is powered on.
- Check if your smartphone's Wi-Fi is enabled and connected to a 2.4GHz network (5GHz is not supported).
- Keep your smartphone close to the device during the first-time setup.
- Confirm that the Wi-Fi password entered is correct. Make sure the distance between the device and router is less than 50 feet (15 meters).
- If binding fails, try this method: Use two smartphones — one to create a hotspot and the other to connect to the hotspot and add the device via the App.
- If successful, it may indicate your router settings (MAC filtering or DHCP restrictions) are causing the issue.

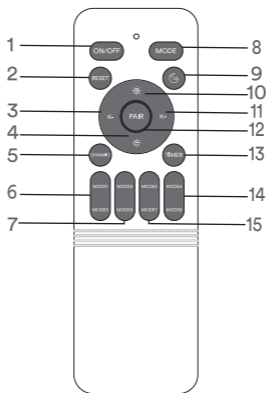
## The light lost connection

- Confirm the light is still powered on.
- Check if your home Wi-Fi network is stable.
- Try connecting the light to another phone's hotspot to isolate router issues.
- Ensure your smartphone is within 50 feet of the device.
- Delete the device in "My Devices" in the app, then re-add the light by following on-screen instructions.

## Can I group multiple devices together?

- Yes, you can group multiple lights or devices using:
  - \* Schemes
  - \* Same model
  - \* General (Wi-Fi or Bluetooth devices)
- Grouping functions depend on device type and firmware version.

# REMOTE CONTROL



**Note:** The remote control that comes with your Sky Light is already paired.

1: ON/OFF

2: RESET

3: Color temperature -

4: Brightness decreased

5: Dynamic Mode

6: Mode 1: Spring

Mode 2: Dawn

7: Mode 3: Summer

Mode 4: Clear Sky

8: Scene Mode

9: Night light

10: Brightness increased

11: Color temperature +

12: PAIR

13: Timer 1H or 2H

14: Mode 5: Winter

Mode 6: Sunset Glow

15: Mode 7: Autumn

Mode 8: Moonlit Night

Our lights come pre-paired with the remote.

If the remote doesn't control the light, follow the steps below.

## How to Pair the Remote with Lights



### 1. Connect to the App:

Power on the light. When it starts blinking, connect it to the App. 2. Pair the Remote:

Turn off the wall switch for 5 seconds, then turn it back on.

Hold the "PAIR" button on the remote for 5 seconds.

When the light blinks, pairing is successful.

Note: If pairing fails, repeat Step 2.

## How to Reset the Light?

### Method 1: Wall Switch Reset

Toggle the switch: ON → OFF → ON → OFF → ON

### Method 2: Remote Reset

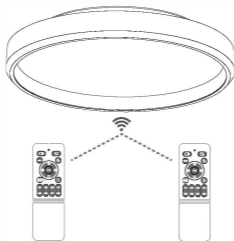
Press the "Reset" button for 5S

Reset Result:

If the light enters pulsing mode, it has been reset and is ready to pair.

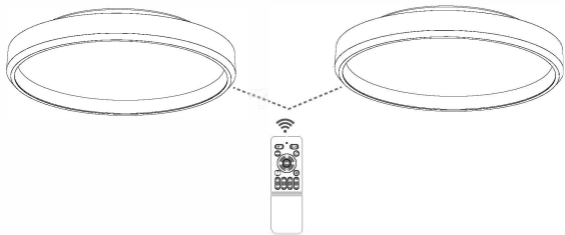
If it does not pulse, the reset failed.

## Using multiple remote controls with one Sky Light



To operate one Sky Light with multiple remote controls, you must pair each additional remote to the receiver in the Sky Light.

## Using one remote control with multiple Sky Lights



To operate multiple Sky Lights with a single remote control, you must pair the remote control to each Sky Light.

## How to Connect Device to Google Assistant

1. Open the App, select your smart device, and tap the "⌵" in the top right corner.
2. Go to "Third-party Control", then tap "Google Assistant".
3. Tap "Link with Google Assistant" and log in to your Google account.
4. Tap "Agree and link" to authorize the connection.
5. Once linked, you can use Google Assistant voice commands to control your device.
6. When adding new devices in the future, simply discover them via the Google Home app — no need to link again.

## Name and Control Each Device by Voice

Google Assistant will automatically sync the names you set for your devices in the app. You can also rename the lights in the Google Home app to simplify voice commands.






To control your smart devices, just ask Google Assistant. Make sure your devices are already set up using the app.

Sample Voice Commands:

- "Hey Google, discover my devices."
- "Hey Google, turn on the bedroom light."
- "Hey Google, set the bedroom light to orange."
- "Hey Google, set the living room light to 50%."
- "Hey Google, dim the porch light."

Note: Some commands require compatible devices.

## ADDITIONAL FEATURES

	<p><b>Adjustable Brightness &amp; Color Temperature (1800–12000K, 0–100% dimming).</b> Simulating natural light rhythms, Low color temperatures (1800–3000K) promote restful sleep, while high color temperatures (5000–12000K) enhance focus. Features ultra-wide color temperature adjustment, multi-scenario ambiance creation, eye-friendly health protection, and smart control functionality.</p>
	<p><b>Full Spectrum</b> White LEDs combined with RGB soft-color light and a unique algorithm simulate full-spectrum daylight. Its color temperature ranges from 1800K to 12000K, allowing smooth adjustment from warm yellow to cool white light. With a Color Rendering Index (Ra) of up to 98, it faithfully reproduces the true colors of objects.</p>
	<p>Sky-spectrum Light Orchestration via Reconstructive Algorithms</p>
	<p><b>Circadian Rhythm</b> Smart light adjusts its color temperature and brightness throughout the day to follow your body's natural circadian rhythm. Enjoy warm, relaxing light in the evening to promote restful sleep, and cool, energizing light in the morning to enhance focus and alertness. Perfect for creating a healthier, more natural daily routine.</p>
	<p><b>Voice Control (Google)</b> "dim the lights!" Control hands-free while cooking, working, or carrying groceries. Check lights remotely on vacation—peace of mind unlocked.</p>

## PARAMETER INFORMATION

Name	Smart Sky Light
Model	A
Input Voltage	120VAC,60Hz
Wattage	60W
Color Temperature	RGBAI +5000K(1800-12000K)
CRI	98+
Lumens	4000lm
Beam Angle	120°
Rated Life	25000h



Contains FCC ID:2ANDL-T1-U-HL

Made in China

## FCC STATEMENT

This device complies with Part 15 of the FCC Rules. Operation is subject to the following two conditions:

- (1) this device may not cause harmful interference.
- (2) this device must accept any interference received, including interference that may cause undesired operation. Changes or modifications not expressly approved by the party responsible for compliance could void the user's authority to operate the equipment.

NOTE: This equipment has been tested and found to comply with the limits for a Class B digital device, pursuant to part 15 of the FCC Rules. These limits are designed to provide reasonable protection against harmful interference in a residential installation. This equipment generates uses and can radiate radio frequency energy and, if not installed and used in accordance with the instructions, may cause harmful interference to radio communications. However, there is no guarantee that interference will not occur in a particular installation. If this equipment does cause harmful interference to radio or television reception, which can be determined by turning the equipment off and on, the user is encouraged to try to correct the interference by one or more of the following measures:

- Reorient or relocate the receiving antenna.
- Increase the separation between the equipment and receiver.
- Connect the equipment into an outlet on a circuit different from that to which the receiver is connected.
- Consult the dealer or an experienced radio/TV technician for help.

**24** HOURS  
Quick Response

## Quick Response

If there is any problem please check the Troubleshooting page . When you could not fix this, please contact us after-sale email, we will respond within 24 hours.

**30** DAYS  
Hassle-Free

## Hassle-Free

After the purchase, if there any quality with devices, we can offer free return or replacement.

**2-YEAR  
WARRANTY**



## Friendly Reminder

Please rest assured that our service aim is to make customers 100% satisfied.  
If there is any problem, please contact us as soon as possible, we will not let you down.