

CEILING LIGHT USER MANUAL



COMPONENTS AND PARTS



- Read instructions carefully and turn electricity off at main circuitbreaker panel before installation.
- Before installation, make sure all parts are included. If any part is missing or damaged, do not attempt to assemble, install or operate the product.

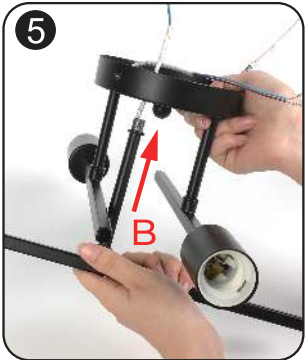
INSTALLATION STEPS

1 Remove the brackets from the base plate

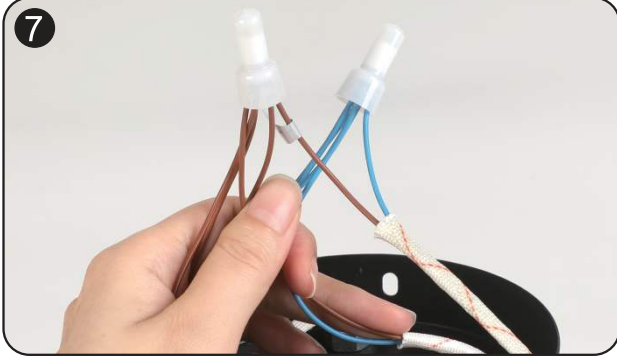
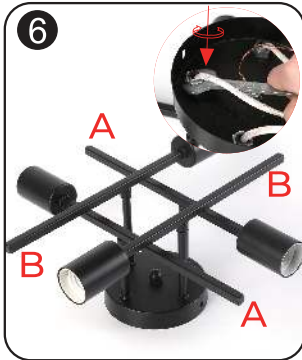
2 Remove all screws and washers from the light poles

3 First, thread light pole A through the base plate and secure it by tightening the nuts

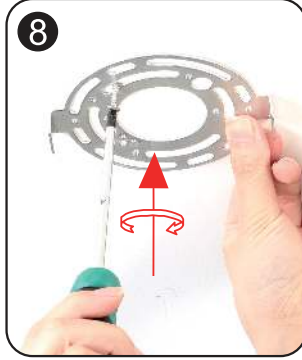
4



Then insert light pole B into the base plate and tighten the nuts to secure it



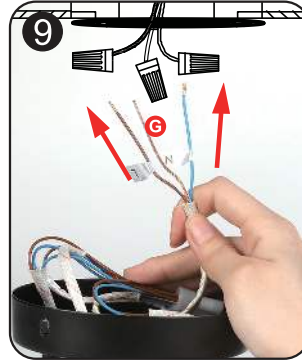
Connect wires of the same color to one end of the extension cord using wire connectors



Secure the bracket to the ceiling with screws



Align the ceiling light base plate with the bracket and screw it in from the side



Connect the extension cord and ground wire to the electrical wiring in your home.



Finally, screw in the light bulb to complete the installation

Pls Note:

1. Please install it by a licensed electrician.
2. Please cut off the electricity supply when you install it.
3. Please use it in dry environment.
4. E26 *4 light holder (light sources are NOT included).