

ASSEMBLY INSTRUCTION

Thank you for purchasing this quality product. Be sure to check all packing material carefully for small parts which may have come loose inside the carton during shipment. Separate, identify and count all parts and hardware. Compare with the parts list to be sure all parts are present.

IMPORTANT : PLEASE READ INSTRUCTION BEFORE STARTING THE ASSEMBLY.

"DO NOT TIGHTEN SCREWS UNTIL COMPLETELY ASSEMBLED"

"DO NOT OVERTIGHT ANY HARDWARE"

WARNING : SMALL PARTS AND HARDWARE NOT FOR CHILDREN UNDER 3 YEARS. ADULT ASSEMBLY REQUIRED.

TABLE OF CONTENTS

HARDWARES LIST

PAGE 2

PARTS LIST

PAGE 3

PARTS' LOCATION

PAGE 4

ASSEMBLY COFFEE TABLE

PAGE 5 - 7

ASSEMBLY END TABLE

PAGE 8 - 10

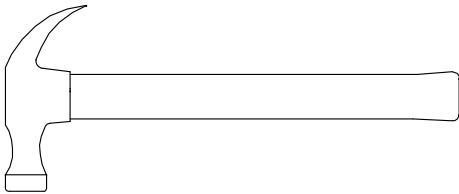
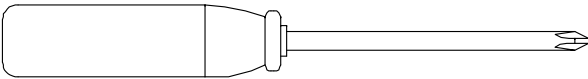
ASSEMBLY COMPLETED

PAGE 10

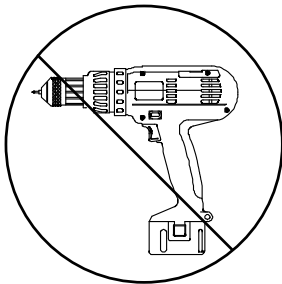
ASSEMBLY TOOLS REQUIRED

1. Screwdriver (not provide)

2. Hammer (not provide)

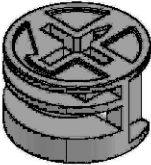
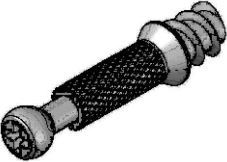
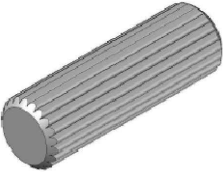


Skip the power trip this time.



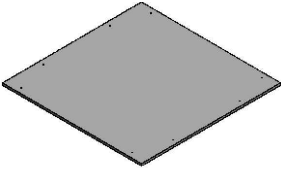
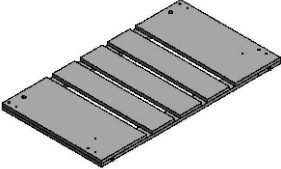
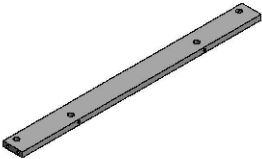
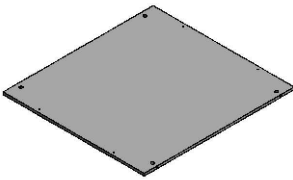
ASSEMBLY INSTRUCTION

HARDWARES LIST

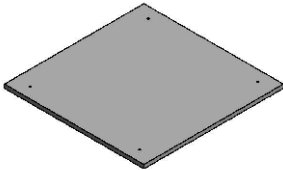
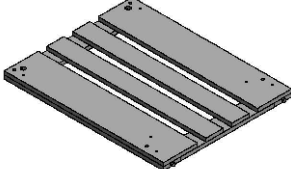
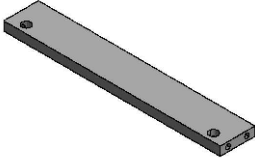
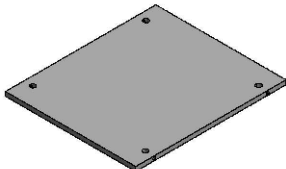
ITEM	DESCRIPTION	DRAWING	QTY
A	MINIFIX CAM LOCK		56 PCS
B	MINIFIX CAM BOLT		56 PCS
C	WOOD DOWEL (M8 x 25MM)		24 PCS

ASSEMBLY INSTRUCTION

PARTS LIST COFFEE TABLE

ITEM	DESCRIPTION	DRAWING	QTY
1	TOP PANEL		1 PC
2	SIDE PANEL		2 PCS
3	SUPPORT RAIL		4 PCS
4	BOTTOM PANEL		1 PC

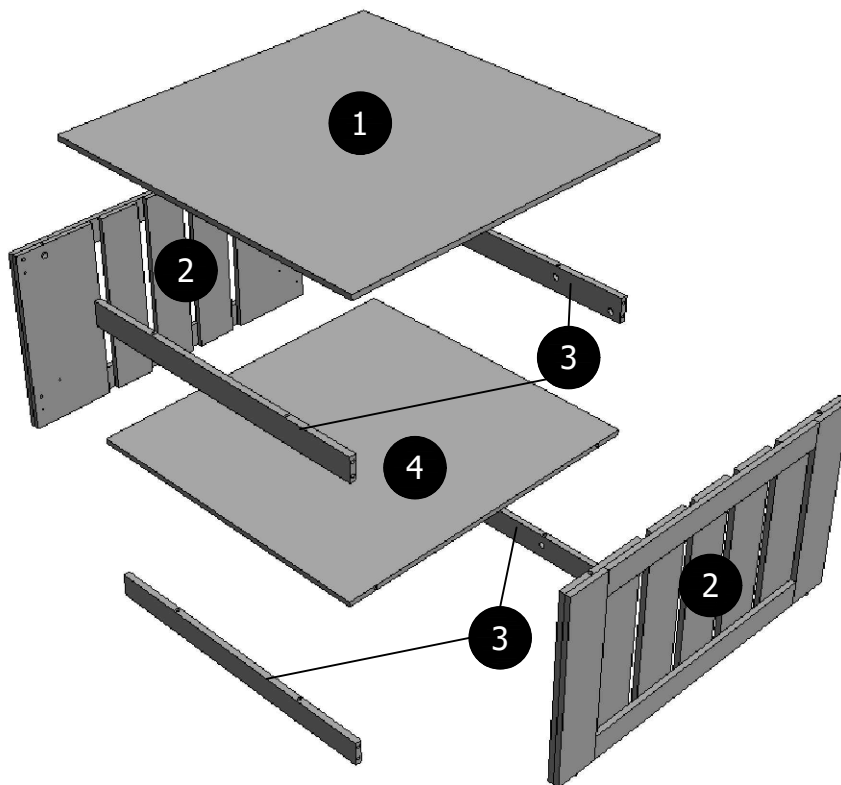
PARTS LIST END TABLE

ITEM	DESCRIPTION	DRAWING	QTY
5	TOP PANEL		2 PCS
6	SIDE PANEL		4 PCS
7	SUPPORT RAIL		8 PCS
8	BOTTOM PANEL		2 PCS

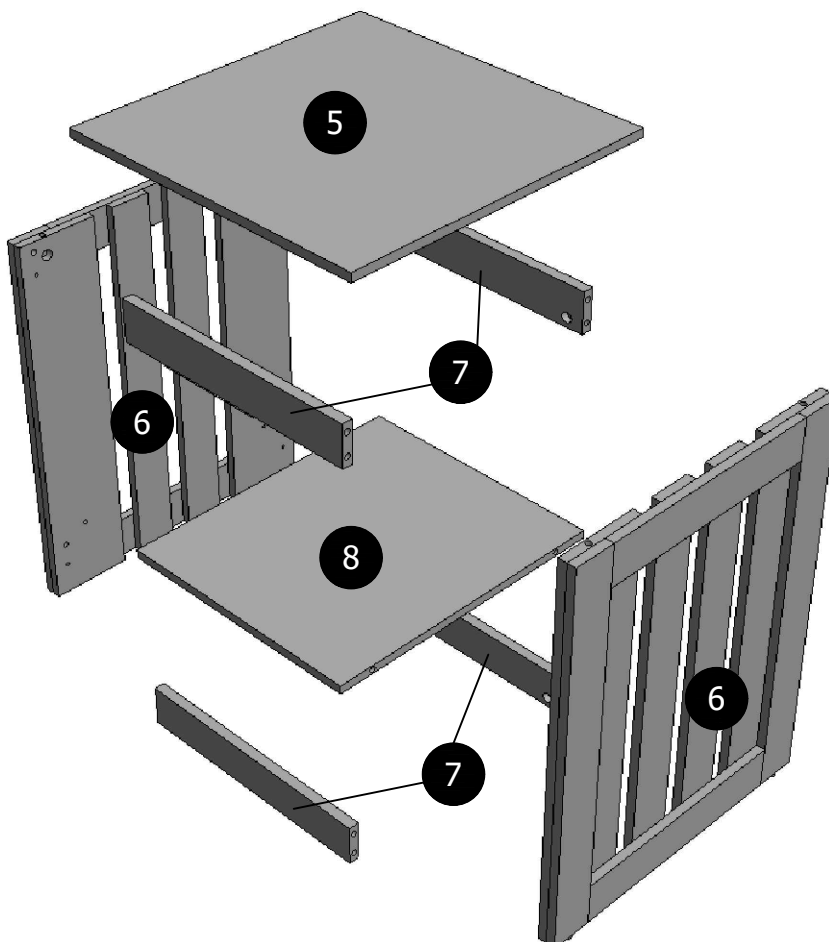
ASSEMBLY INSTRUCTION

PARTS ' LOCATION

COFFEE TABLE x 1 PC

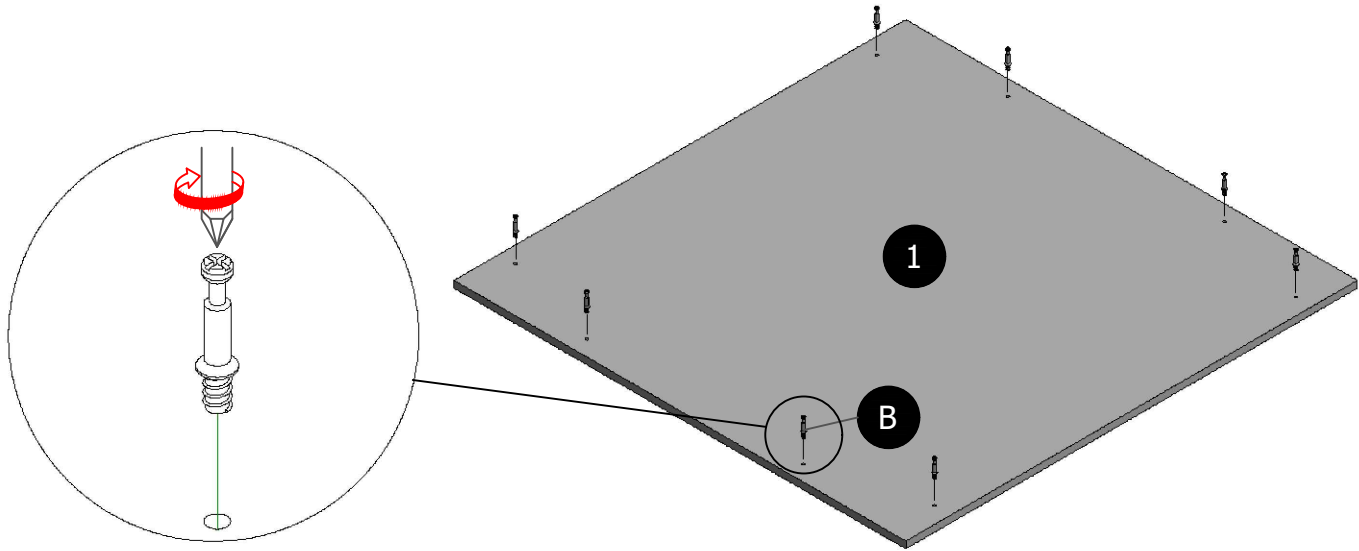


END TABLE x 2 PCS

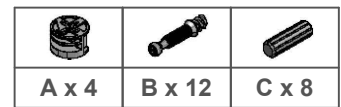
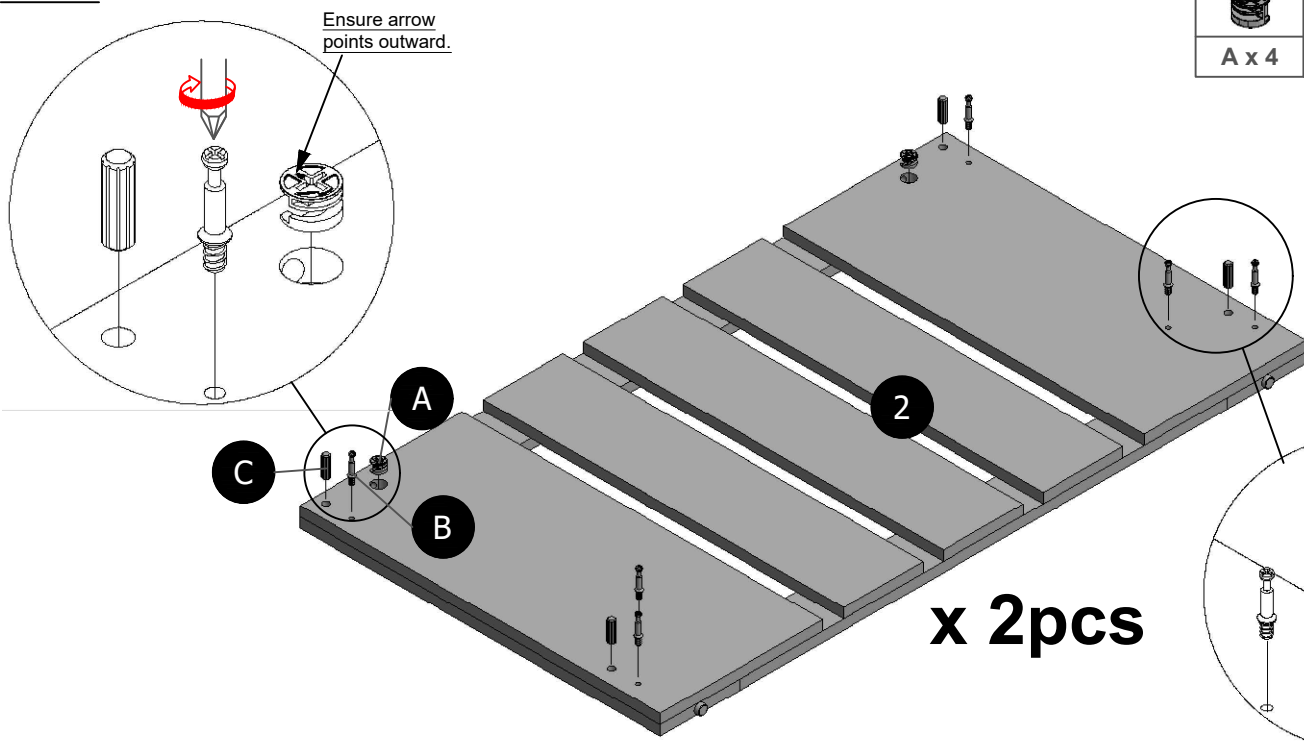


ASSEMBLY INSTRUCTION

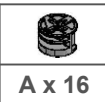
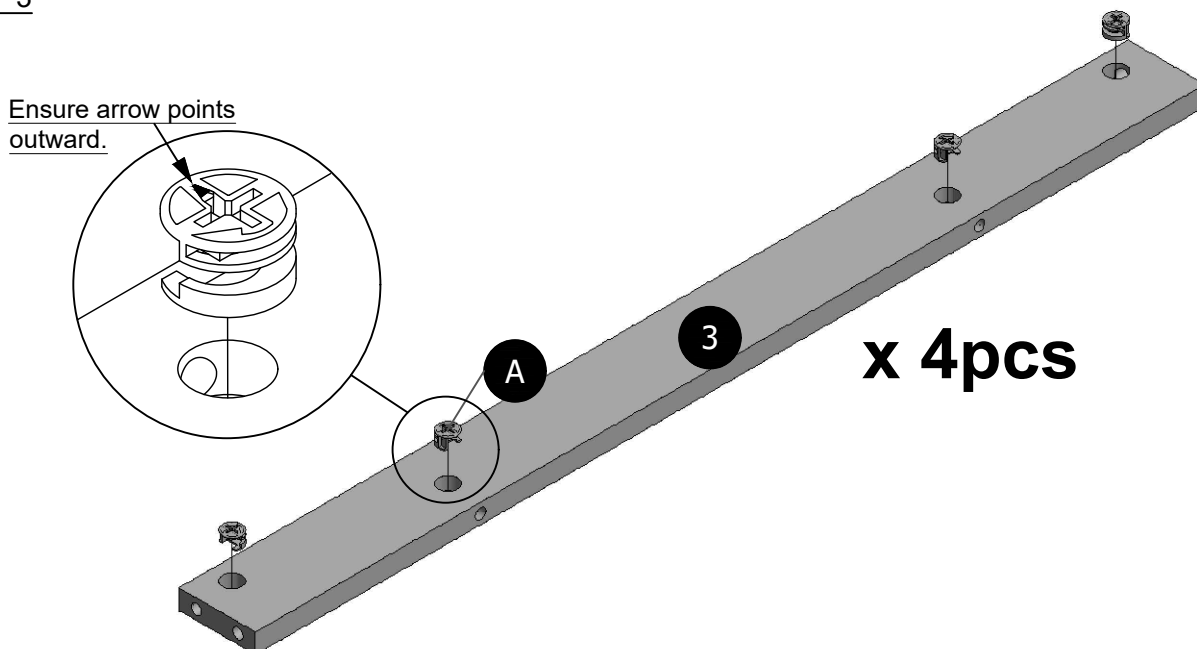
STEP 1



STEP 2



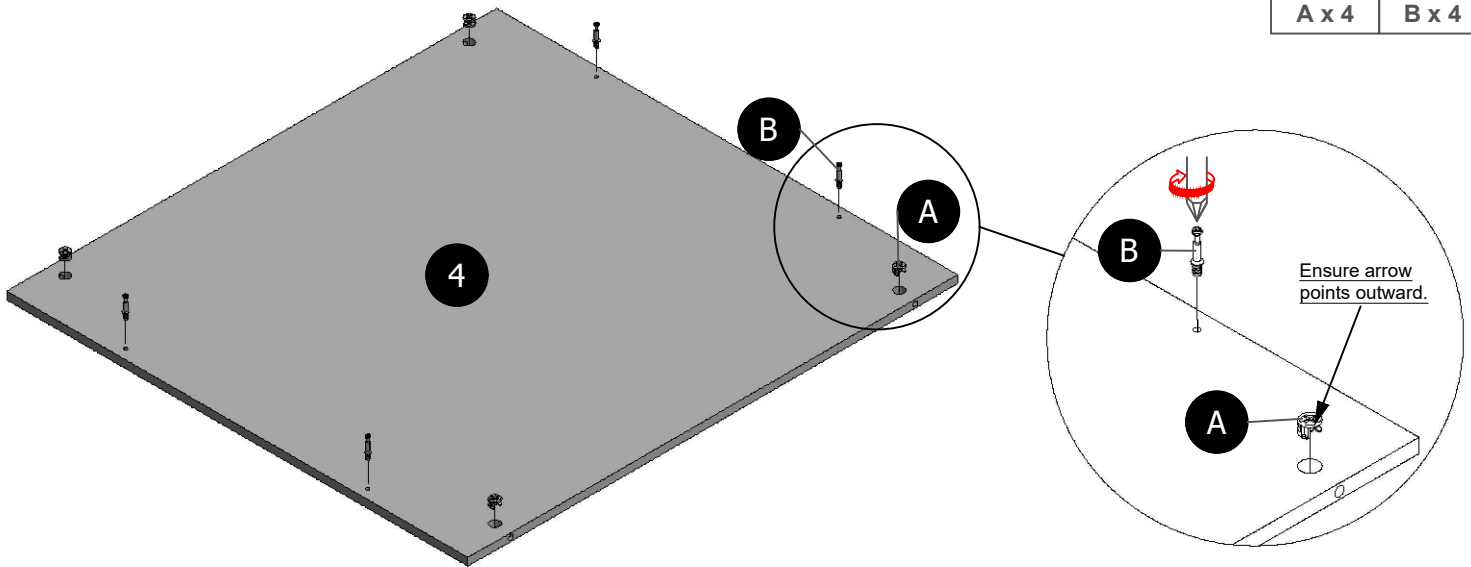
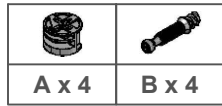
STEP 3



ASSEMBLY INSTRUCTION

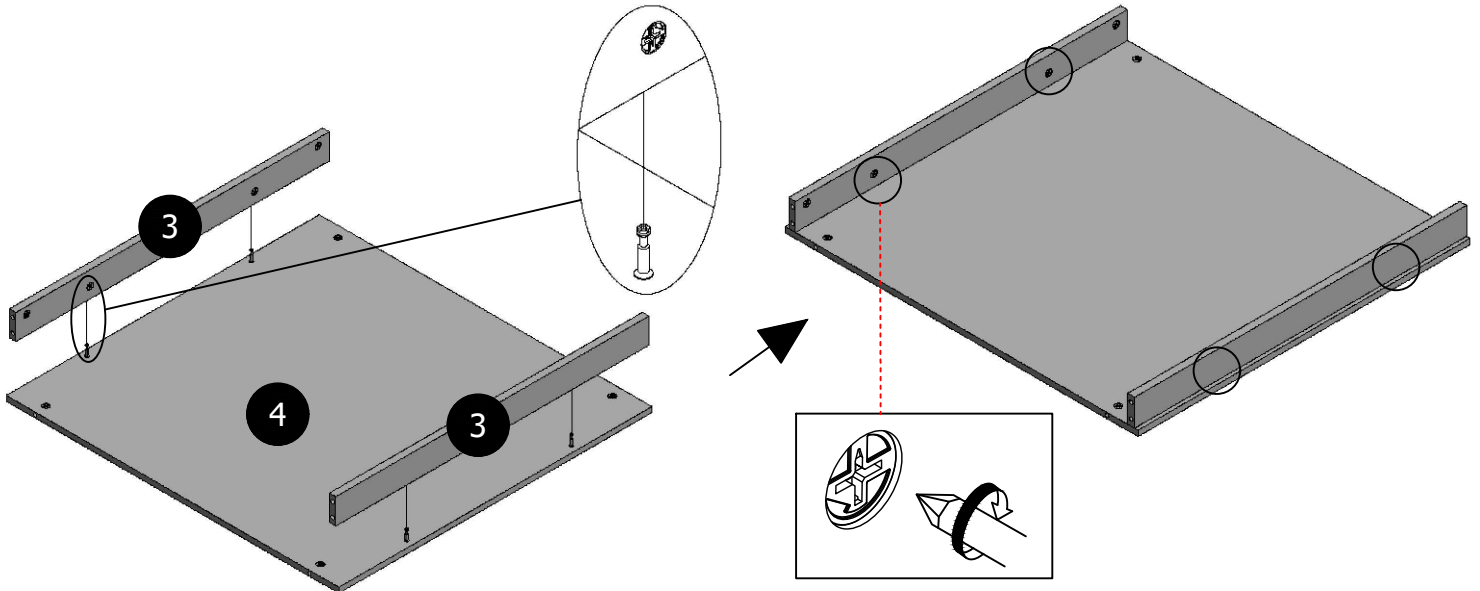
STEP 4

Insert 4pcs (A) into the (4), then screw in 4pcs (B) as shown.



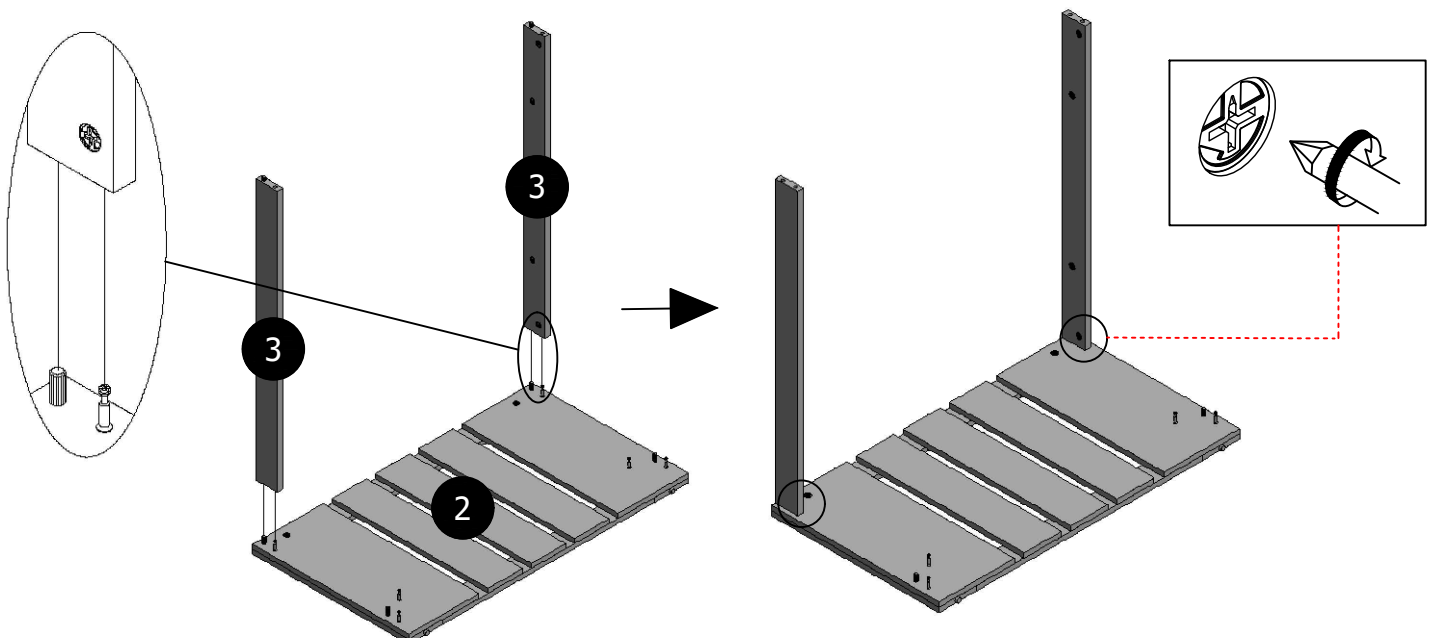
STEP 5

Combine (3) into (4), then tighten 4pcs (A) as shown.



STEP 6

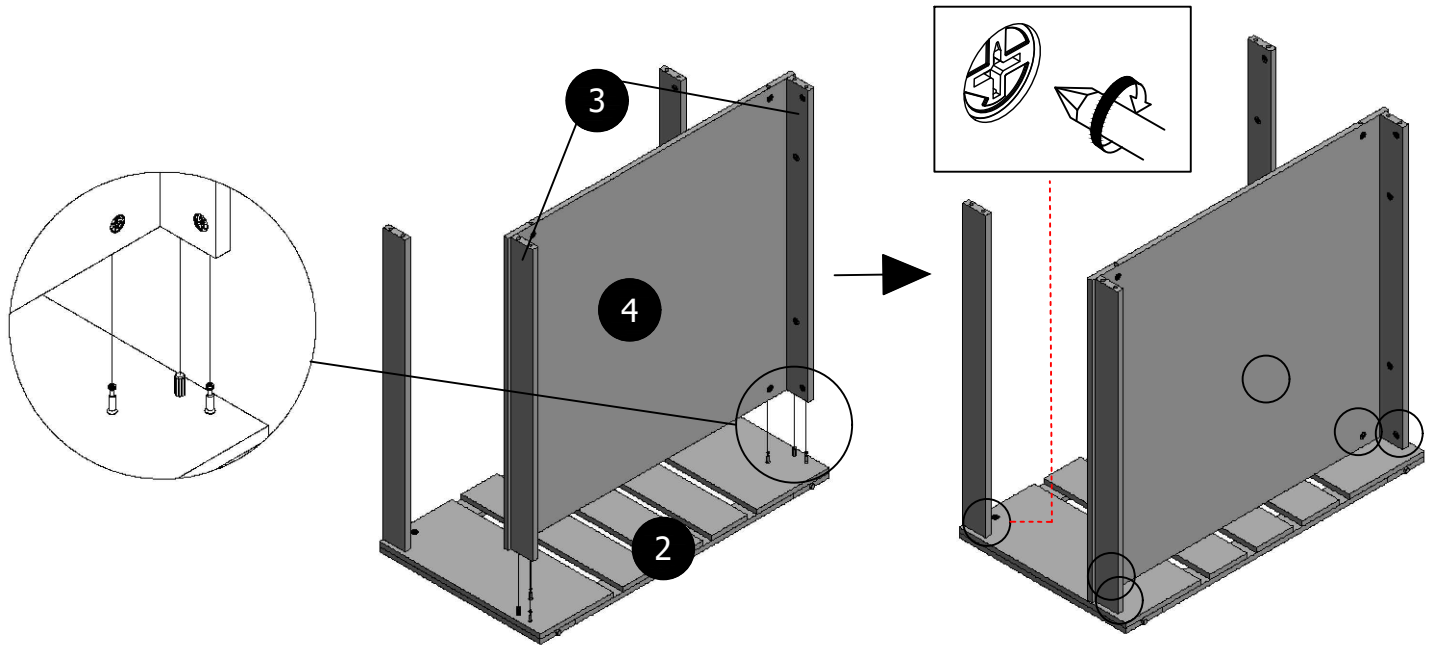
Combine (3) into (2), then tighten 2pcs (A) as shown.



ASSEMBLY INSTRUCTION

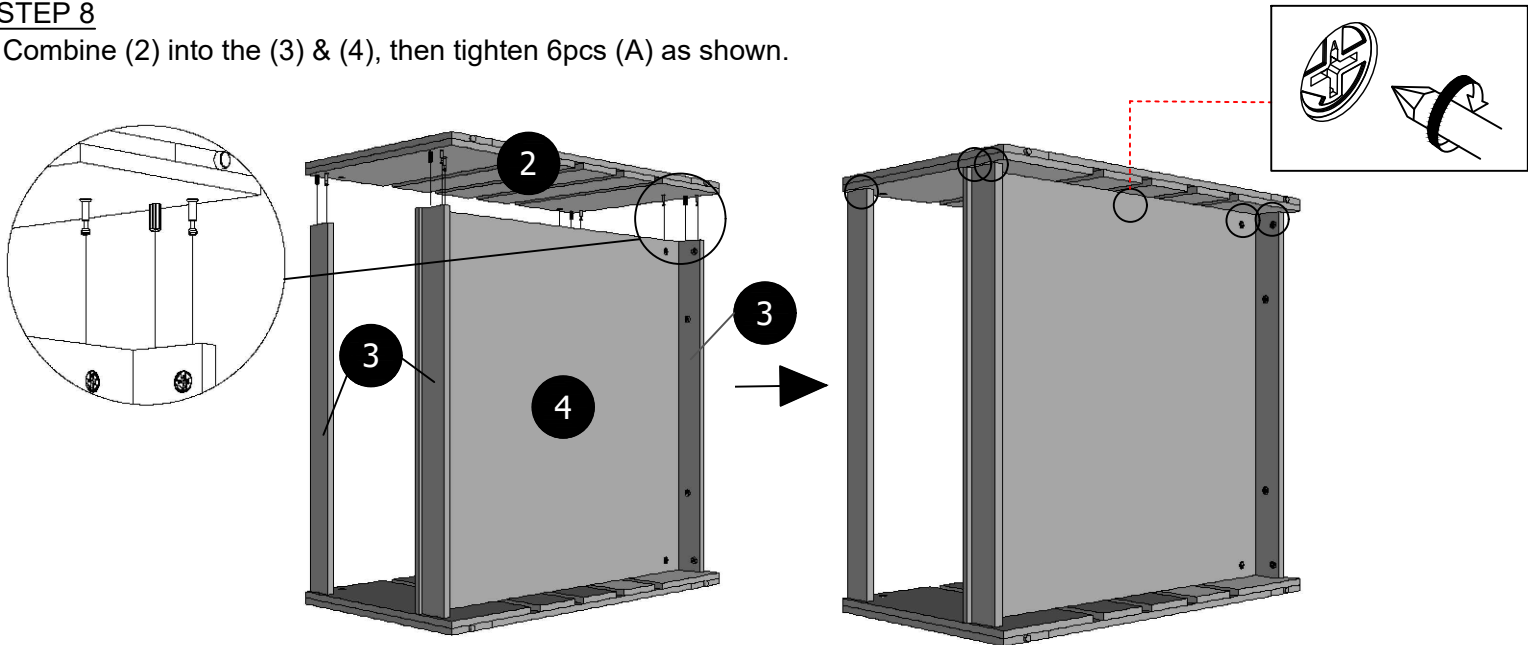
STEP 7

Combine (3) & (4) into (2), then tighten 4pcs (A) as shown.



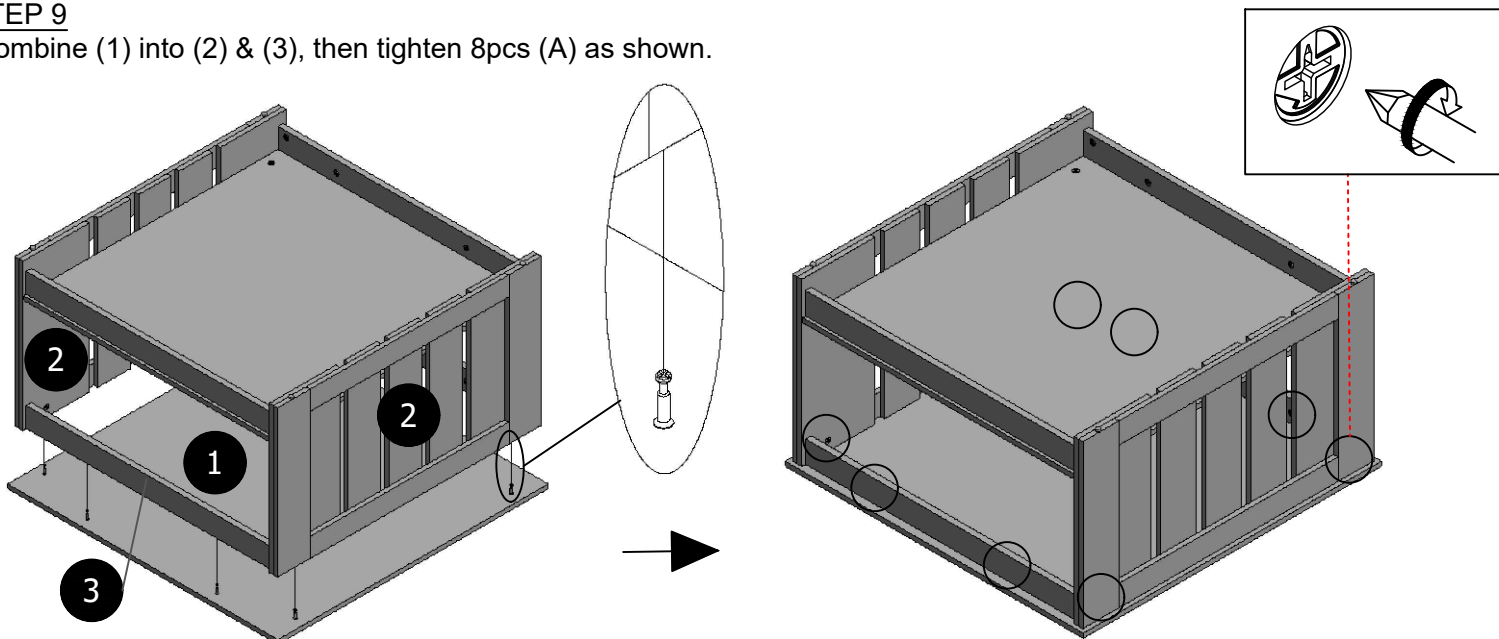
STEP 8

Combine (2) into the (3) & (4), then tighten 6pcs (A) as shown.



STEP 9

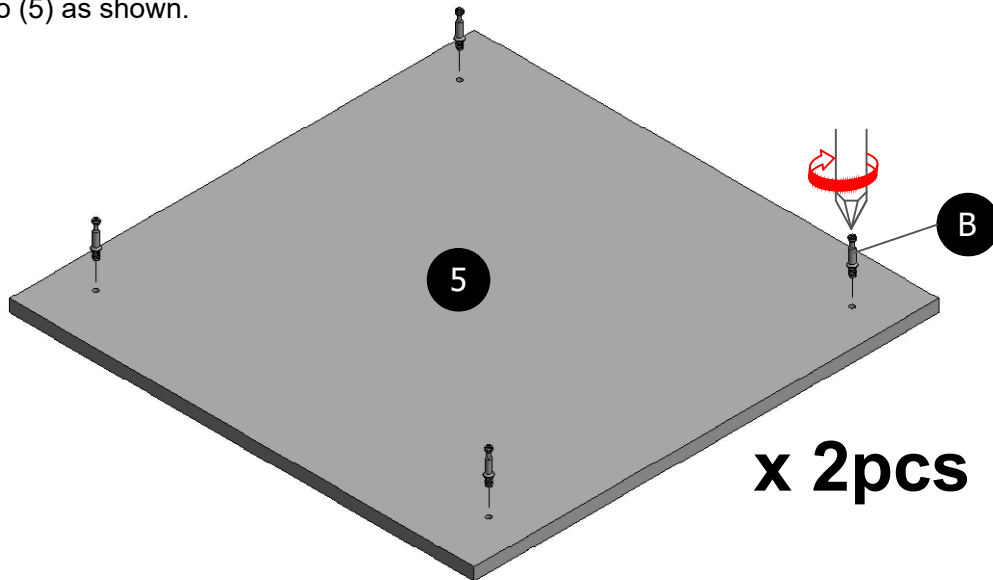
Combine (1) into (2) & (3), then tighten 8pcs (A) as shown.



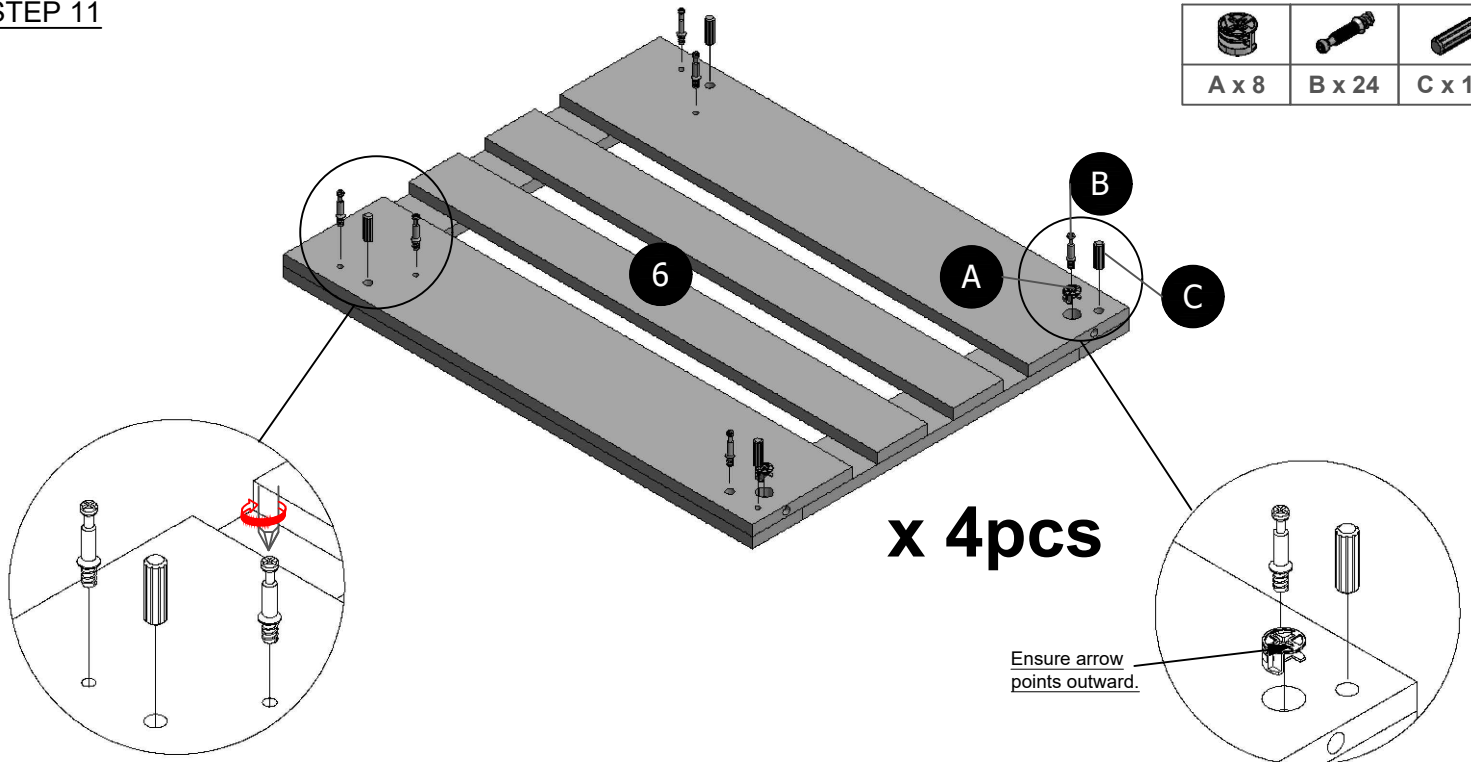
ASSEMBLY INSTRUCTION

STEP 10

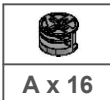
Screw in 4pcs (B) into (5) as shown.



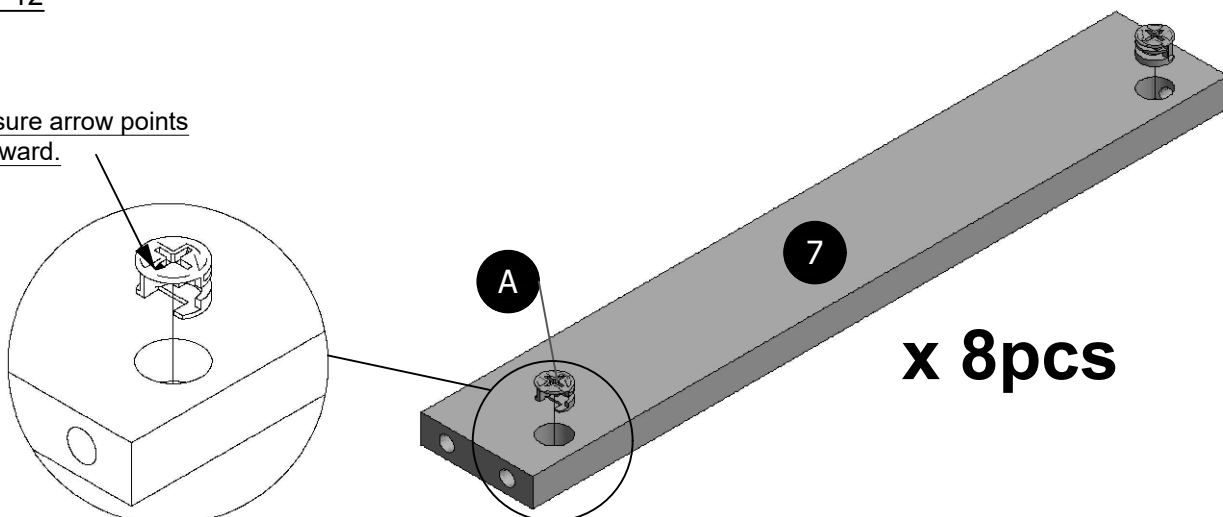
STEP 11



STEP 12



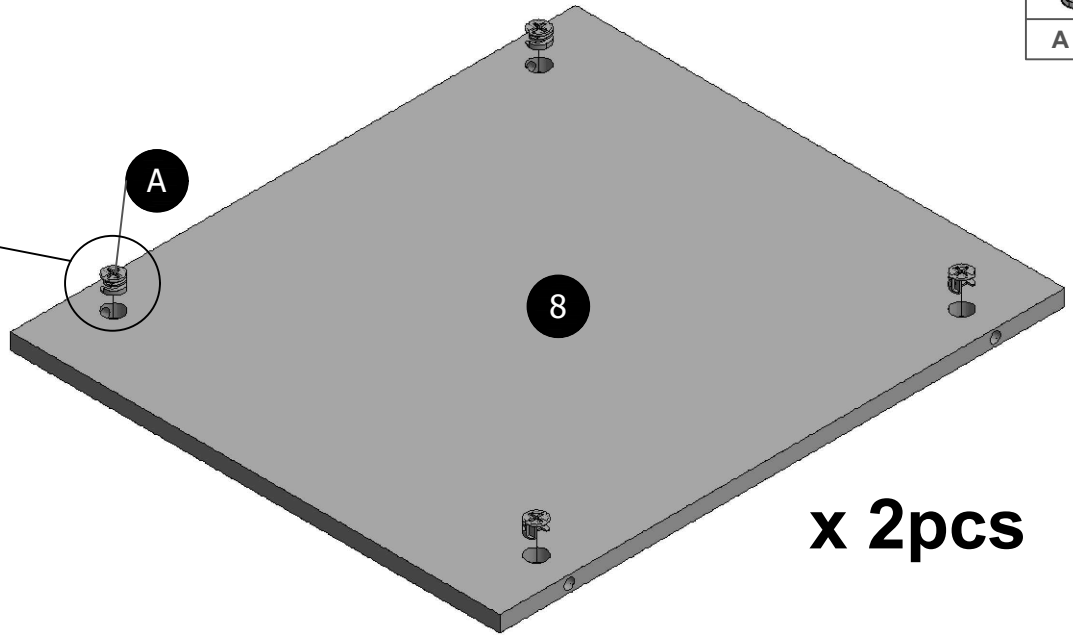
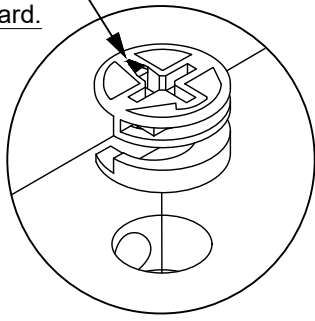
Ensure arrow points outward.



ASSEMBLY INSTRUCTION

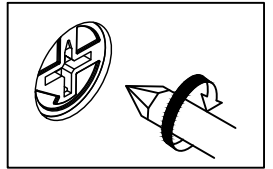
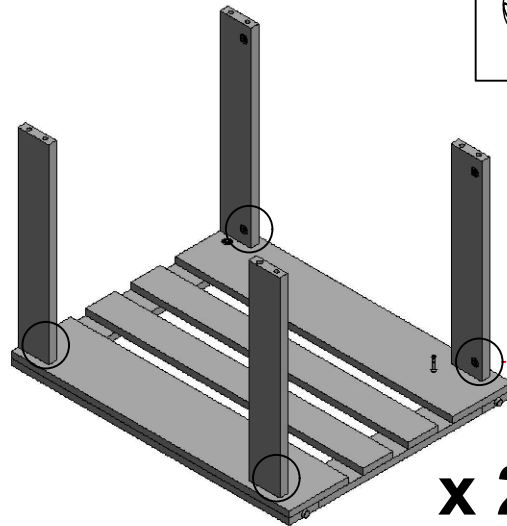
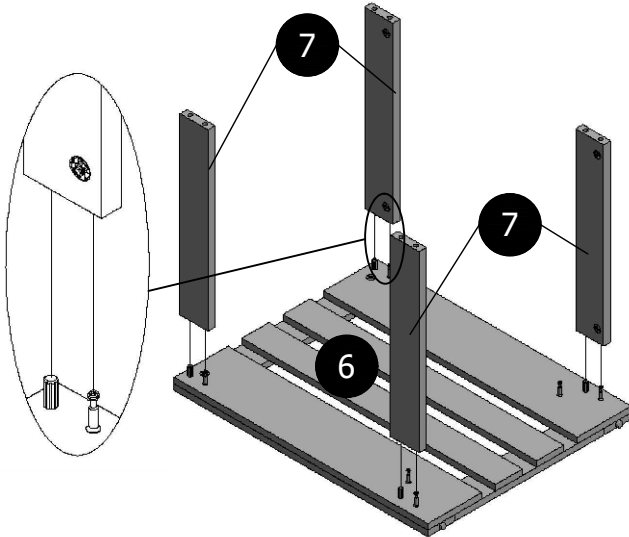
STEP 13

Ensure arrow points outward.



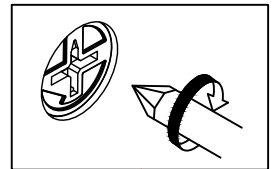
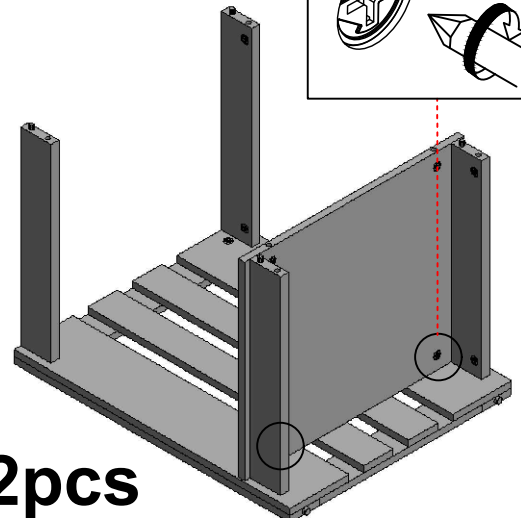
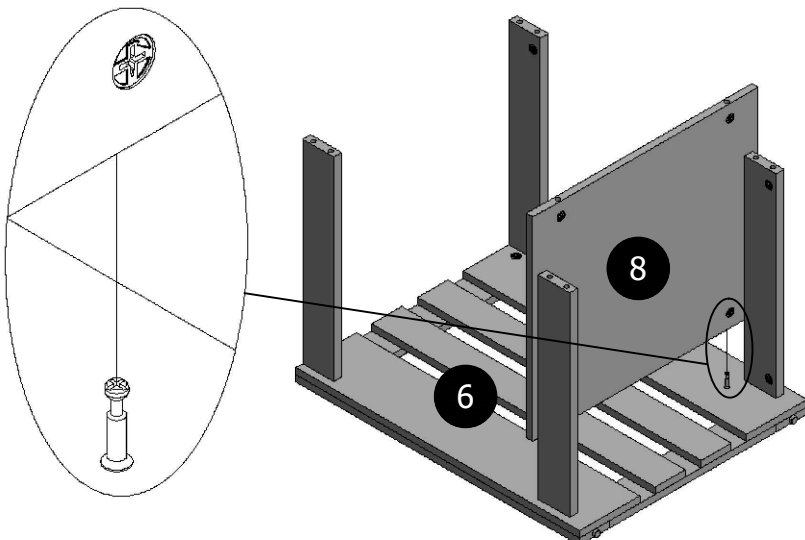
STEP 14

Combine (7) into (6), then tighten 4pcs (A) as shown.



STEP 15

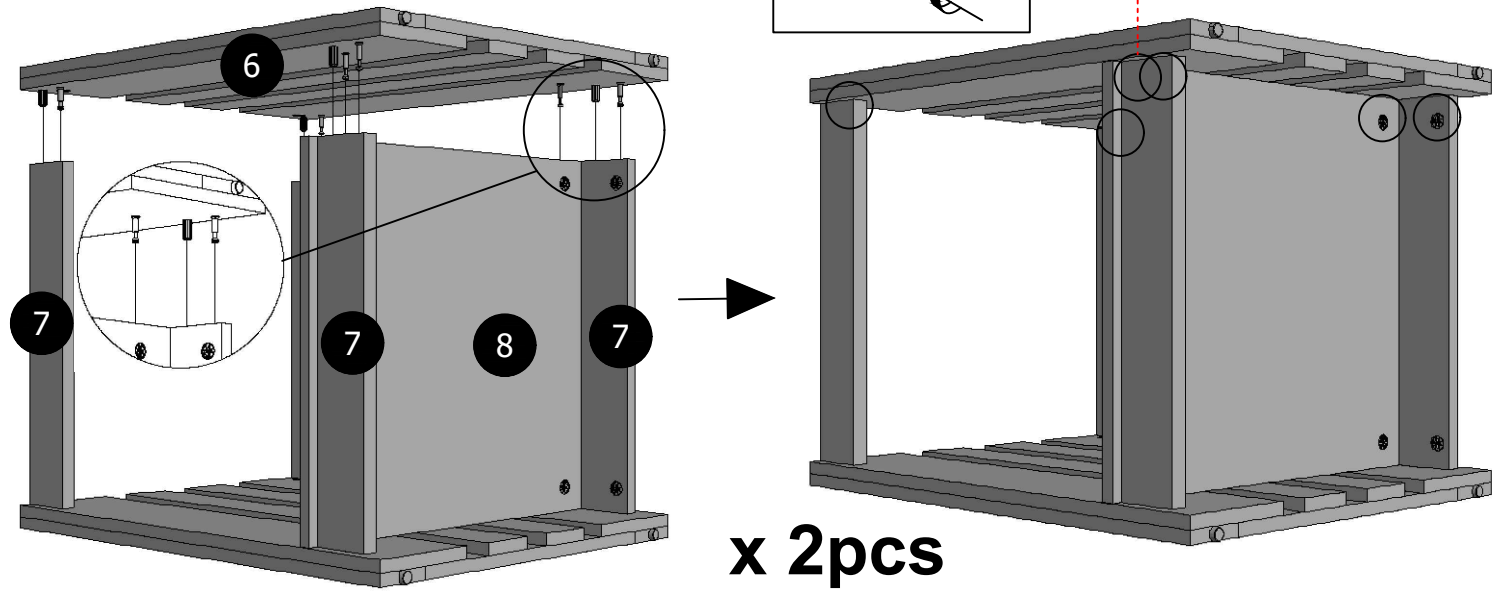
Combine (8) into (6), then tighten 2pcs (A) as shown.



ASSEMBLY INSTRUCTION

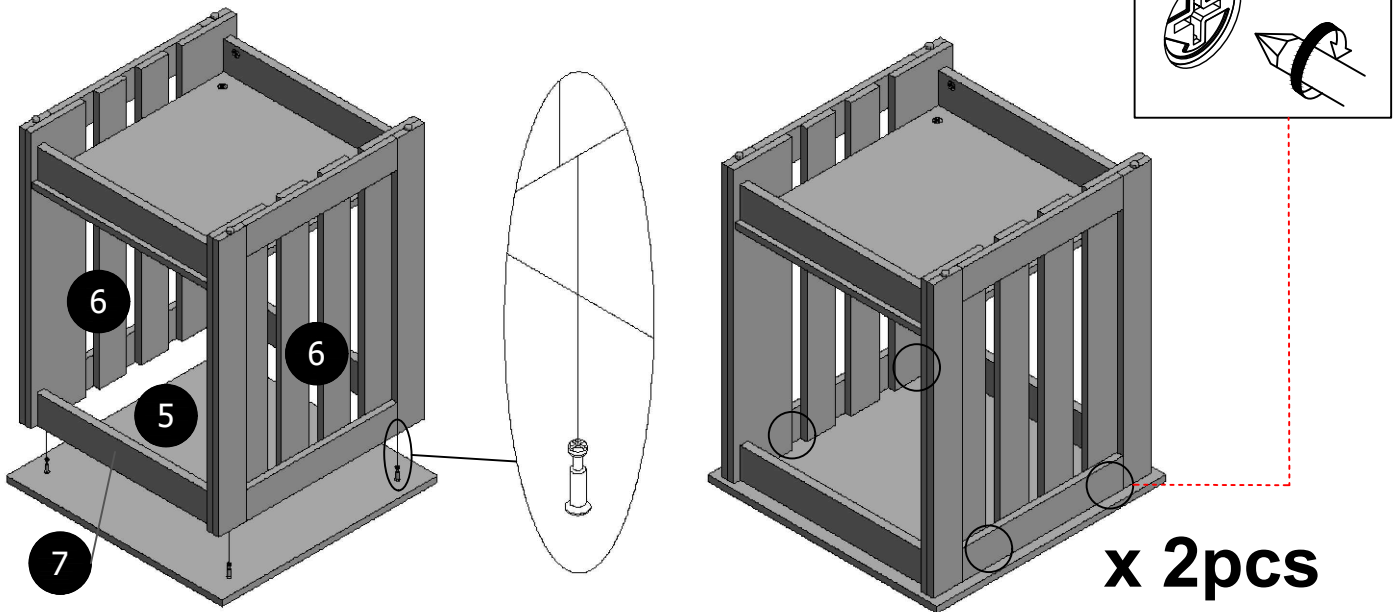
STEP 16

Combine (6) into (7) & (8), then tighten 6pcs (A) as shown.

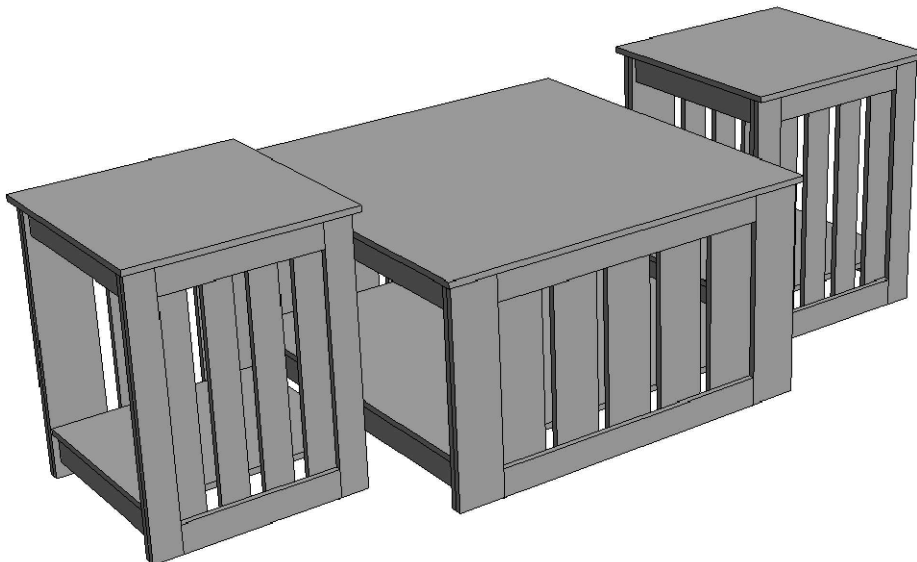


STEP 17

Combine (5) into (6) & (7), then tighten 4pcs (A) as shown.



STEP 18



ASSEMBLY COMPLETED