

# 4-Drawer Storage Chest



## WARNING

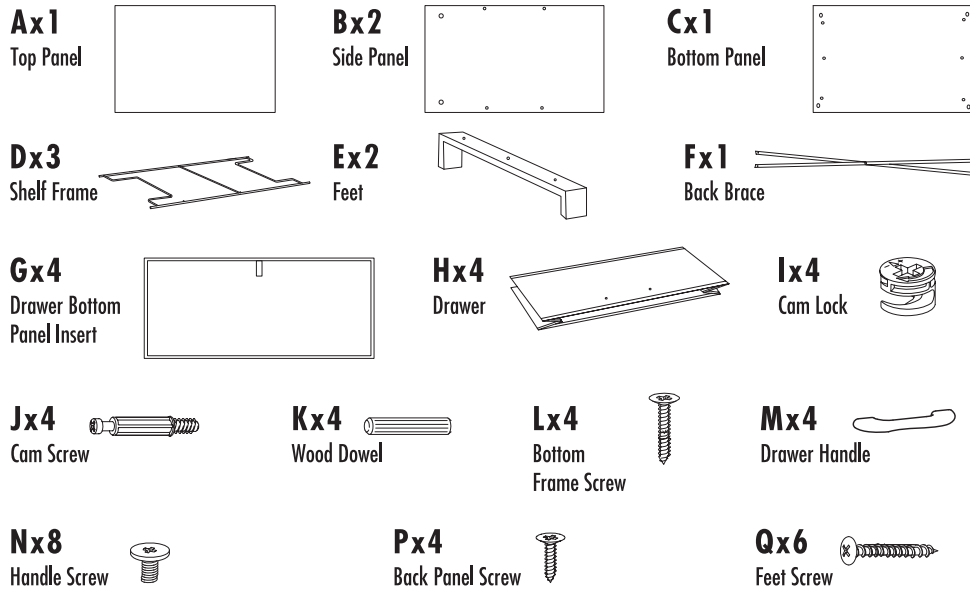
Attach the unit to the wall with the Tipping Restraint Kit hardware. Follow the instructions printed on restraint kit's bag to install.

**Serious or fatal crushing injuries can occur from furniture's tipping over. To help prevent tipping:**

- Avoid climbing on or hanging on product.
- Unless specifically designed to accommodate, do not set TVs or other heavy objects on top of this product.
- Place heaviest items in the lowest position possible.
- Secure product to the wall with tipping-restraint.

**The use of tipping restraints may only reduce, not eliminate, the risk of tipping over.**

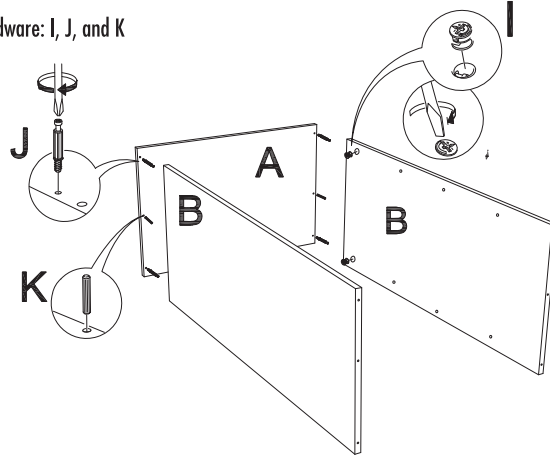
## Parts



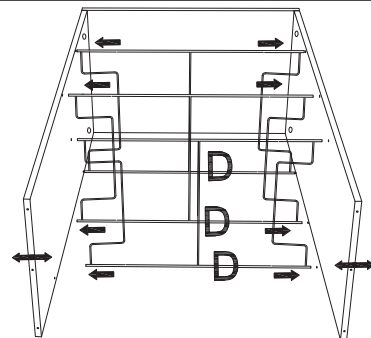
## Assembly

**1** Attach top panel (A) to side panels (B). Hardware: I, J, and K

- Screw in cam lock screws (J) into the predrilled holes at the 4 corners of the top panel (A). Insert wood dowels (K) into the remaining predrilled holes in the top panel (A).
- Insert cam locks (I) into the predrilled holes in the corners of side panels (B).
- Align the top panel (A) with the predrilled holes in edge of the side panels (B) and press together. Secure by twisting cam locks.



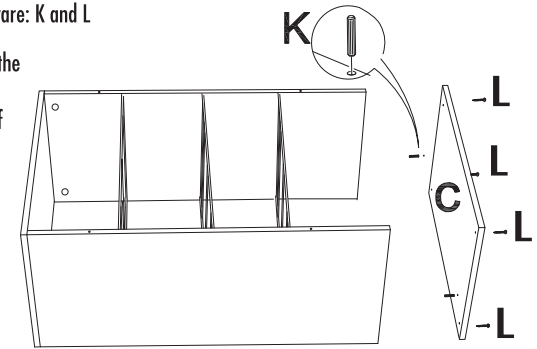
**2** Insert shelf frames (D) into predrilled holes in side panels (B), beginning with the holes closest to the top panel (A).



## Assembly cont'd

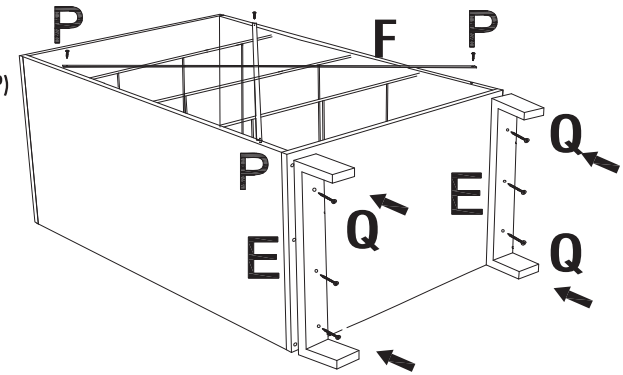
**4** Attach bottom panel (C) to side panels (B). Hardware: K and L

- Insert wood dowels (K) into the 2 predrilled holes on the top side of the bottom panel (C).
- Align wood dowels with predrilled holes in the edge of side panels (B) and press dowels into side panels to attach.
- Screw bottom panel (C) to side panels (B) using bottom panel screws (L) through the predrilled holes.



**6** Attach back brace (F) and feet (E). Hardware: P and Q

- Screw back brace (F) with frame screws (P) to the back side of side panels (B).
- Position feet (E) on the underside of the bottom panel (C) beneath the side panels. (This position provides the greatest support and stability). Screw feet (E) into the bottom panel (C) with feet screws (Q).

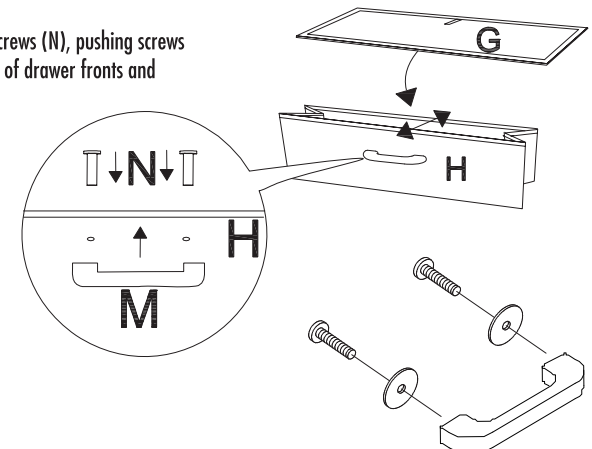


**6** Set up drawers (G and H). Hardware: M, N

- Unfold drawers (H) and insert a drawer bottom panel (G) into the bottom of each drawer (H).
- Attach drawer handles (M) with handle screws (N), pushing screws through designated holes in the backside of drawer fronts and screwing them into drawer handles (M).



Insert drawers into unit to finish.



**NOTE:** Screws and washers may already be screwed into handles.