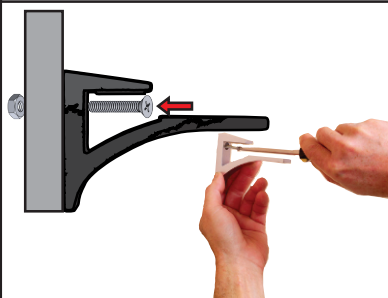


**Your glass shelf mirror, depending on the size ordered will have pre-drilled mounting holes as shown here.**



**You will have brackets and mounting screws/nuts in your package. It's a good idea to mount the brackets prior to hanging your mirror. And lastly, inserting your glass shelf.**



**You will line up the bracket with the pre-drilled hole on your frame and insert the screw through the front into the nut on the back like shown here. A good snug fit is satisfactory, you don't want the bracket to be able to move once tightened.**

**Once you have installed all brackets, you may hang your mirror in your desired location. Now you can insert your glass shelf.**

