



GTPLAYER

ASSEMBLY INSTRUCTIONS



- EN **Assembly Instructions**
- DE **Montageanleitung**
- FR **Instructions d'assemblage**
- IT **Istruzioni di montaggio**
- ES **Instrucciones de montaje**

READ THIS MANUAL

Do not use this product until you read and understand the instructions in this manual.

KEEP THIS MANUAL FOR FUTURE REFERENCE.

This manual is intended for installation and use. The pattern should be subject to the product you receive.

Version 23.08.28



E-mail: info@gtplayerchair.com

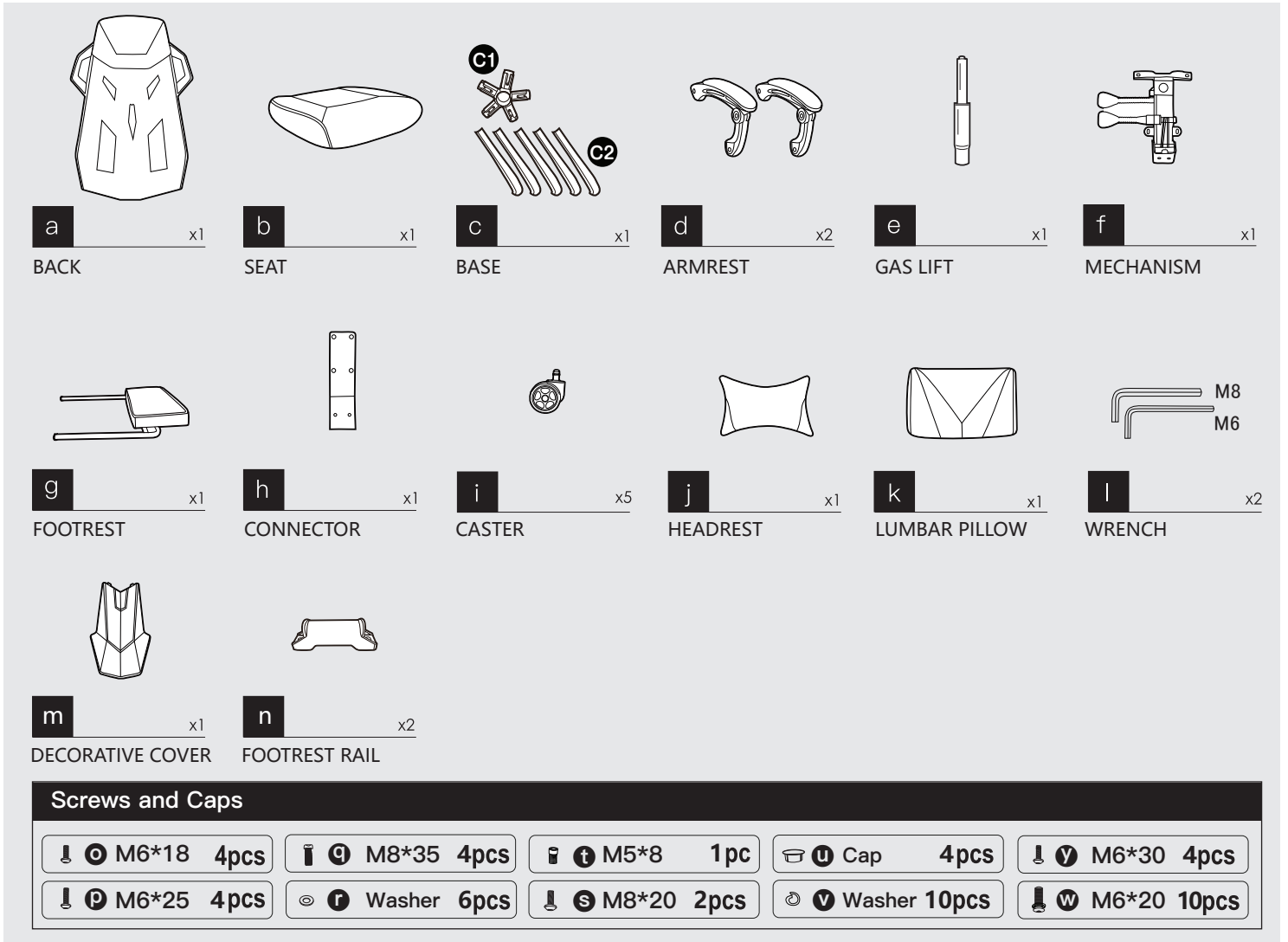
www.gtplayer.com

If you have any questions about the product, please contact us through the contact information on the left. We will try our best to solve your problem within 24H (except weekends and holidays).

01 Check All the Accessories

Accessory Details

Please check and ensure all the things are in the package.
You can contact us for help if something is not included.

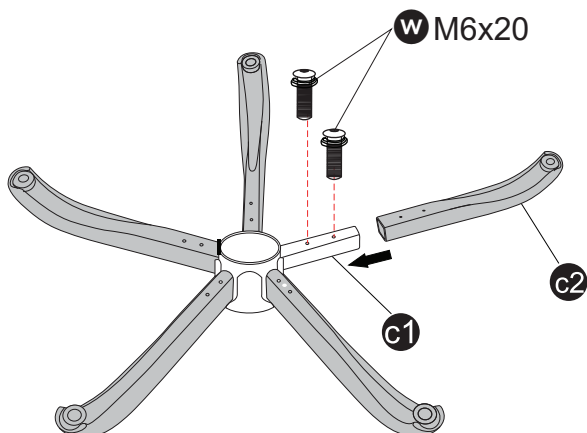


02 Instructions Before Using

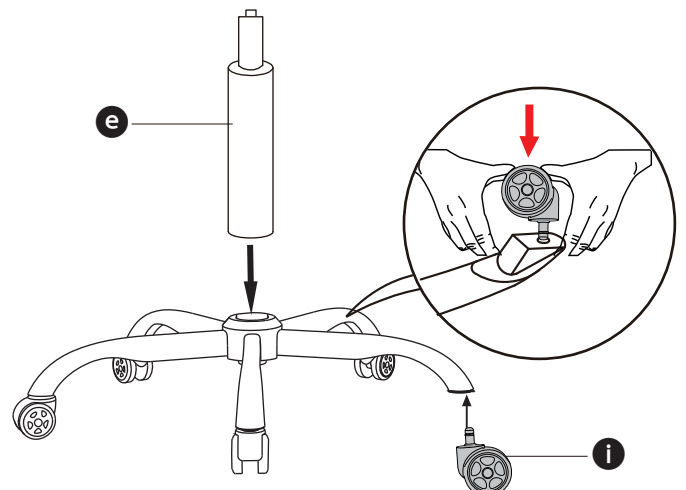
Chair Installation

Please keep the original box in case you might need to return or replace the product.

1 Install the base.

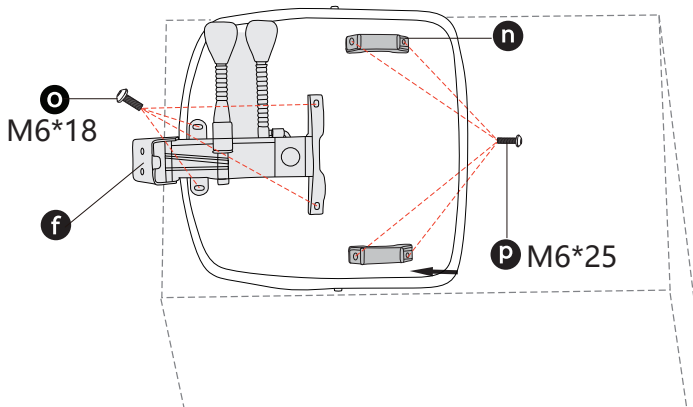


2 Insert the casters into the bottom of the base. Install the gas lift.



3 Install the mechanism and footrest rails.

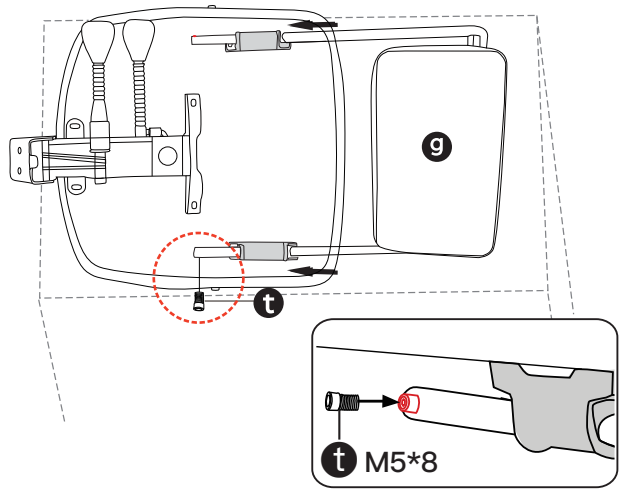
(For easy installation, place the SEAT on top of the packaging box.)



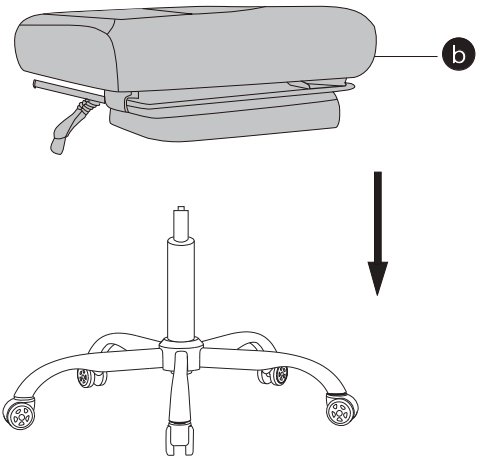
Attention
DO NOT tighten all the screws completely until they are fixed in the correct position.

4 Attach the footrest into the footrest rails.

(For easy installation, place the SEAT on top of the packaging box.)



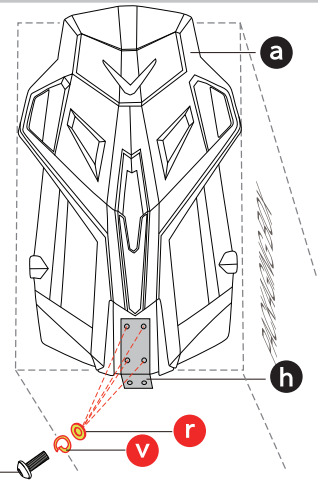
5 Place the seat on the gas lift.



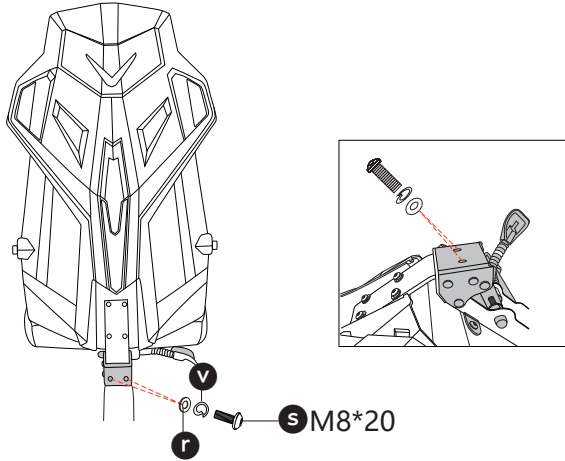
6 Install the connector 'h' on the chair back.

(For easy installation, place the BACK on top of the packaging box.)

Note:
• Follow the installation step:
1: gasket 'r',
2: gasket 'v',
3: Screw M6*30 'y'

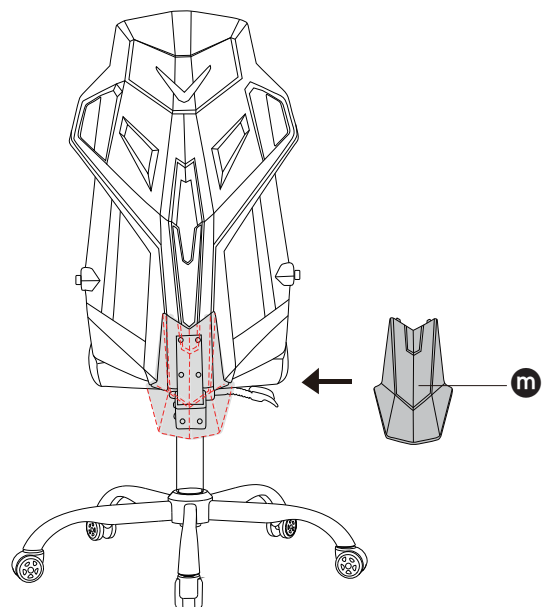


7 Install the chair back on the rear end of the mechanism.

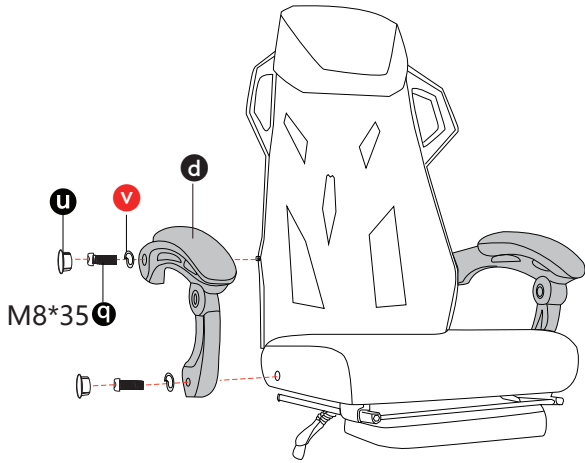


Attention
DO NOT tighten all the screws completely until they are fixed in the correct position.

8 Install the decorative cover.



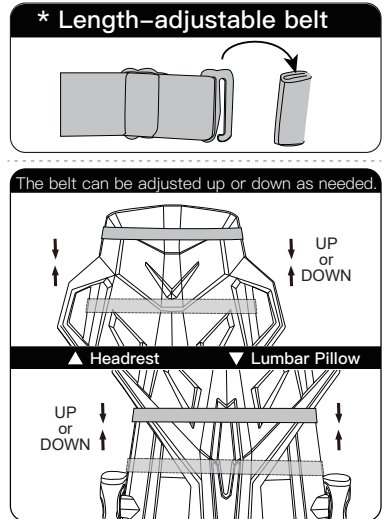
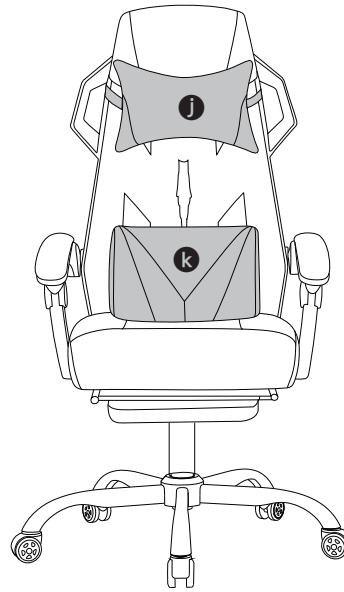
9 Align the screw holes and install the armrests.



Attention

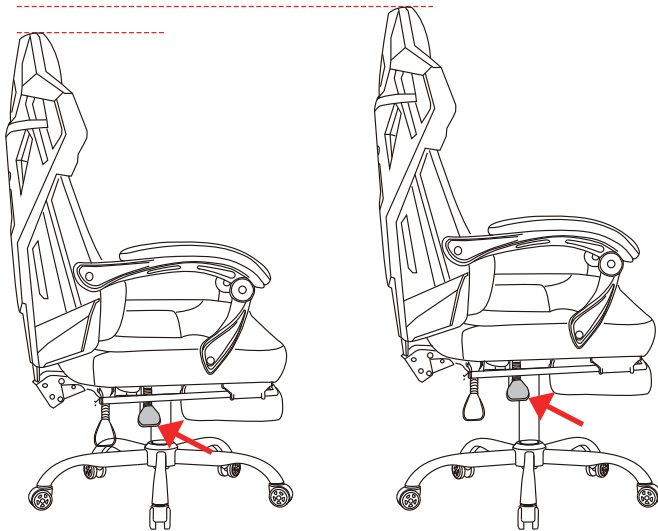
DO NOT tighten all the screws completely until they are fixed in the correct position.

10 Attach the headrest and lumbar pillow.

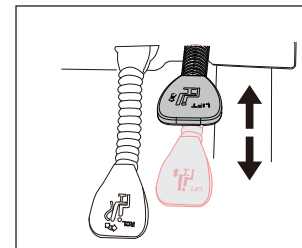


03 Instructions For Use
Functions Display

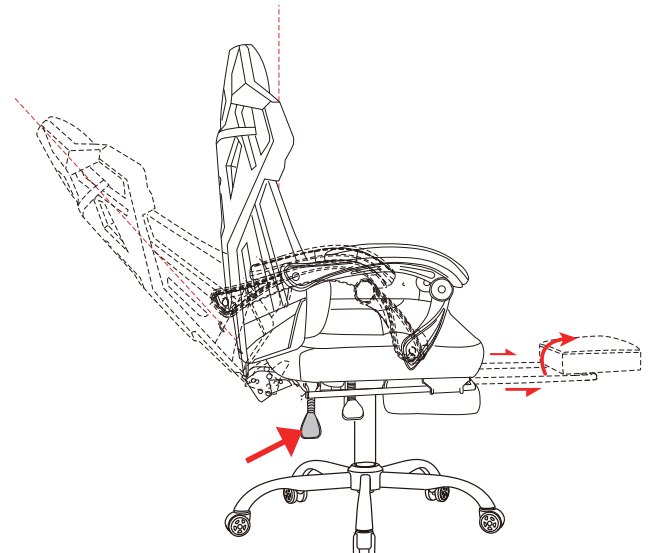
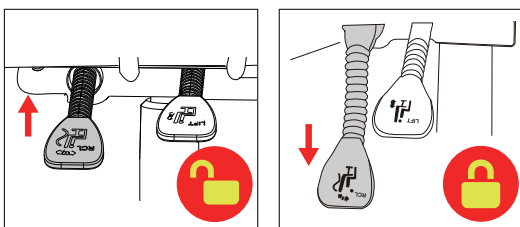
Please read the function introduction carefully.



- A** Pull the "LIFT" lever upward to adjust the height of the chair, and release "LIFT" lever at the desired height. Lift body slightly off the seat when adjusting the height up.



- B** Pull up on the "RCL" lever and the back angle tilts independently with the user's motion. Push down on the "RCL" lever and the back angle is locked in position. Rest on the back when resetting back to its normal position, otherwise, the back may rebound rapidly.

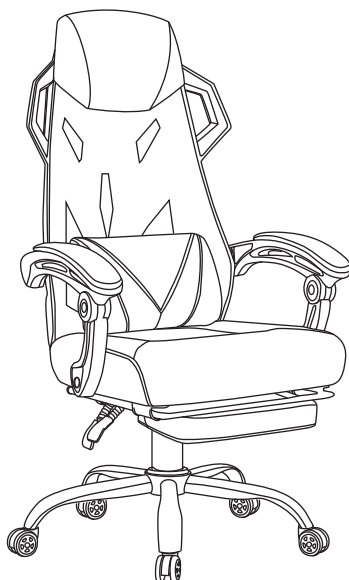


EN PACKAGE CONTENTS		
A	Back	(X1)
B	Seat	(X1)
C	Base	(X1)
D	Armrest	(X2)
E	Gas Lift	(X1)
F	Mechanism	(X1)
G	Footrest	(X1)
H	Connector	(X1)
I	Caster	(X5)
J	Headrest	(X1)
K	Lumbar Pillow	(X1)
L	Wrench	(X2)
M	Decorative Cover	(X1)
N	Footrest Rail	(X2)
	Screws and caps as shown	

DE PACKUNGSINHALT		
A	Rückenlehne	(X1)
B	Sitz	(X1)
C	Gestell	(X1)
D	Armlehnen	(X2)
E	Gasdruckfeder	(X1)
F	Mechanismus	(X1)
G	Fußstütze	(X1)
H	Verbinder	(X1)
I	Rollen	(X5)
J	Kopfstütze	(X1)
K	Lendenkissen	(X1)
L	Innensechskantschlüssel	(X2)
M	Dekorative Abdeckung	(X1)
N	Verbinder	(X2)
	Schrauben und Abdeckkappen, wie dargestellt	

FR CONTENU DE L' EMBALLAGE		
A	Dossier	(X1)
B	Assise	(X1)
C	Base	(X1)
D	Accoudoirs	(X2)
E	Vérin à gaz	(X1)
F	Mécanisme	(X1)
G	Repose-Pieds	(X1)
H	Raccord	(X1)
I	Roulettes	(X5)
J	Appui-Tête	(X1)
K	Coussin lombaire	(X1)
L	Clés Hexagonales	(X2)
M	Couvercleur Decoratif	(X1)
N	Connecteur	(X2)
	Vis et Bouchons, tels qu'affichés	

IT CONTENUTO DE L' EMBALLAGE		
A	Schienale	(X1)
B	Sedile	(X1)
C	Base	(X1)
D	Braccioli	(X2)
E	Cilindro Pistone A Gas	(X1)
F	Meccanismo Di Reclinazione	(X1)
G	Poggiapiedi	(X1)
H	Connettore	(X1)
I	Ruote	(X5)
J	Poggiatesta	(X1)
K	Cuscino Lombare	(X1)
L	Chiavi a brugola	(X2)
M	Copertina Decorativa	(X1)
N	Connettore poggiapiedi	(X2)
	Viti e tappi, come illustrato	



ES CONTENIDO DE L' EMBALLAGE		
A	Respaldo	(X1)
B	Asiento	(X1)
C	Base	(X1)
D	Resposabrazos	(X2)
E	Cilindro De Elevación De Gas	(X1)
F	Mecanismo De Inclinación	(X1)
G	Escabel	(X1)
H	Conector	(X1)
I	Ruedas	(X5)
J	Almohada De Cabeza	(X1)
K	Almohada Lumbar	(X1)
L	Llaves hexagonales	(X2)
M	Cubierta Decorativa	(X1)
N	Conector	(X2)
	Tornillos y tapas, como se muestra	

EN

Assembly Instructions

1. Install the base.
2. Insert the casters into the bottom of the base, then install gas lift.
3. Install the mechanism and footrest rails.
4. Attach the footrest into the footrest connectors. Attention:DO NOT tighten screws completely until they are fixed in the correct position.
5. Place the seat on the gas lift.
6. Install the connector **H** on the chair back.
7. Install the chair back on the rear end of the mechanism. Attention:DO NOT tighten screws completely until they are fixed in the correct position.
8. Install the decorative cover.
9. Align the screw holes and install the armrests. Attention:DO NOT tighten screws completely until they are fixed in the correct position.
10. Attach the headrest and lumbar pillow.

Functions:

- A. Pull the "LIFT" lever upward to adjust the height of the chair, and release "LIFT" lever at the desired height. Lift body slightly off the seat when adjusting the height up.

- B. Pull up on the "RCL" lever and the back angle tilts independently with the user's motion. Push down on the "RCL" lever and the back angle is locked in position. Rest on the back when resetting back to its normal position, otherwise, the back may rebound rapidly.

DE

Montageanleitung


1. Installieren Sie die Basis.
2. Setzen Sie die Rollen in die Unterseite der Basis ein. Installieren Sie dann die Gasfeder.
3. Installieren Sie den Mechanismus und Fußstütze.
4. Schließen Sie die Fußstütze an den Fußstützenanschlüssen an. Hinweis: Ziehen Sie die Schrauben erst fest an, wenn alle Schrauben in der richtigen Position fixiert sind.
5. Platzieren Sie den Sitz auf der Gasdruckfeder.
6. Installieren Sie den Verbinderh an der Rückenlehne.
7. Installieren Sie die Rückenlehne am hinteren Ende des Mechanismus. Hinweis: Ziehen Sie die Schrauben erst fest an, wenn alle Schrauben in der richtigen Position fixiert sind.
8. Installieren Sie die dekorative Abdeckung.
9. Richten Sie die Schraubenlöcher aus und installieren Sie die Armlehnen. Hinweis: Ziehen Sie die Schrauben erst fest an, wenn alle Schrauben in der richtigen Position fixiert sind.
10. Bringen Sie die Kopfstütze und das Lendenkissen an.

Funktionen:

- A. Ziehen Sie den "LIFT" Hebel nach oben, um die Höhe des Stuhls einzustellen, und lassen Sie den "LIFT" Hebel in der gewünschten Höhe los. Heben Sie den Körper bei der Höhenverstellung leicht vom Sitz ab.
- B. Ziehen Sie den "RCL" Hebel nach oben und der Rückenwinkel neigt sich unabhängig mit der Bewegung des Benutzers. Drücken Sie den "RCL" Hebel nach unten und der Rückenwinkel wird in seiner Position verriegelt.

FR

Instructions d'assemblage

1. Installez la base.
2. Insérez les roulettes dans le fond de la base, puis installez le vérin à gaz.
3. Installer le mécanisme et le connecteur du repose-pieds.
4. Fixer le repose-pieds dans les connecteurs du repose-pieds. Attention : NE PAS serrer complètement les vis avant qu'elles ne soient fixées dans la bonne position.
5. Placez le siège sur le vérin à gaz.
6. Installer le connecteur  sur le dossier du fauteuil.
7. Installer le dossier du fauteuil sur l'extrémité arrière du mécanisme. Attention: NE PAS serrer les vis complètement avant qu'elles ne soient fixées dans la bonne position.
8. Installer le couvercle décoratif.
9. Aligner les trous de vis et installer les accoudoirs. Attention : ne serrez pas complètement les vis avant qu'elles ne soient fixées dans la bonne position.
10. Fixez l'appui-tête et le coussin lombaire.

Fonctions :

- A. Tirez le levier "LIFT" vers le haut pour régler la hauteur du fauteuil, et relâchez le levier "LIFT" à la hauteur souhaitée. Soulevez légèrement le corps du siège lors du réglage de la hauteur.
- B. Tirez le levier "RCL" vers le haut et l'angle du dossier s'incline indépendamment du mouvement de l'utilisateur. Poussez le levier "RCL" vers le bas et l'angle du dossier est verrouillé en position. Appuyez sur le dossier lorsque vous le remettez en position normale, sinon le dossier risque de rebondir rapidement.

IT

Istruzioni di montaggio

1. Installare la base.
2. Inserire le ruote nella parte inferiore della base. Quindi installare il cilindro pistone a gas.
3. Installare il meccanismo di reclinazione e il poggiapiedi.
4. Attaccare il poggiapiedi ai connettori poggiapiedi. Attenzione: NON serrare completamente le viti finché non sono fissate nella posizione corretta.
5. Posizionare il sedile sul cilindro pistone a gas.
6. Installare il connettore **h** sullo schienale della sedia.
7. Installare lo schienale sul retro del meccanismo di reclinazione. NOTA: non serrare completamente le viti finché non sono in posizione.
8. Installare la copertura decorativa.
9. Allineare i fori delle viti e installare i braccioli. NOTA: non serrare completamente le viti finché non sono in posizione.
10. Attaccare il poggiatesta e il cuscino lombare.

Funzioni:

- A. Tirare la leva "LIFT" verso l'alto per regolare l'altezza della sedia e rilasciare la leva "LIFT" all'altezza desiderata. Sollevare leggermente il corpo dal sedile durante la regolazione dell'altezza.
- B. Tirare verso l'alto la leva "RCL" e l'angolo dello schienale si inclina indipendentemente dal movimento dell'utente. Spingere verso il basso la leva "RCL" e l'angolo posteriore è bloccato in posizione. Riposa sullo schienale quando ripristina la posizione normale, altrimenti lo schienale potrebbe riprendersi rapidamente.

ES

Instrucciones de montaje

1. Instale la base.
2. Inserte las ruedas en la parte inferior de la base. luego instale el elevador de gas.
3. Instale el mecanismo y el reposapiés conectores.
4. Fije el reposapiés en los conectores del reposapiés. Atención: NO apriete los tornillos completamente hasta que estén fijados en la posición correcta.
5. Coloque el asiento en el elevador de gas.
6. Instale el conector h en el respaldo de la silla.
7. Instale el respaldo de la silla en el extremo posterior del mecanismo. Atención: NO apriete los tornillos completamente hasta que estén fijados en la posición correcta.
8. Instale la cubiertadecorativa.
9. Alinee los agujeros de los tornillos e instale los reposabrazos. Atención: NO apriete los tornillos completamente hasta que estén fijados en la posición correcta.
10. Coloque el reposacabezas y la almohada lumbar.

Funciones:

- A. Tire de la palanca "LIFT" hacia arriba para ajustar la altura de la silla, y suelte la palanca "LIFT" a la altura deseada. Levante le cuerpo ligeramente del asiento cuando ajuste la altura hacia arriba.
- B. Tire hacia arriba de la palanca "RCL" y el ángulo del respaldo se inclina independientemente del movimiento del usuario. Empuje hacia abajo la palanca "RCL" y el ángulo del respaldo se bloqueará en su posición. Apóyese en el respaldo cuando vuelva a su posición normal, de lo contrario el respaldo podría rebotar rápidamente.

Dear Customer,

Thank you for choosing us.

GTPLAYER has been implementing its brand and design concept “BE COOL BE FREE”, and we are dedicated to enriching gaming and shopping experience for customers.

For safe use, please read this manual before installation, and keep it for after use. Please feel free to email us if you have any concerns about our products. We'll reply within 24 hours.

The following are the things you need to pay attention to so that we can provide you with services when you encounter problems during the installation and use of the product:

- When the product is damaged due to courier problems, please contact our customer service in time for verification.
- We will rectify the issue as soon as possible;
- We give 2 years quality assurance;
- We provide a 60-day no-reason return service (Note that the returned product will not affect the secondary sales).

We offer product explanations, installation instructions, product maintenance and maintenance methods.

If you feel satisfied with our product and service,

- Please set our store as your favorites;
- Please recommend our products to your friends;
- Please leave us your purchase experience in our store or product page.

Feedback or reviews from you will greatly help us offer better services to players around the world.

Best regards!

*** ATTENTION! During installation, DO NOT tighten all the screws completely until all the screws are fixed in the correct position.**

E-mail: info@gtplayerchair.com

www.gtplayer.com



If you have any questions about the product, please contact us through the contact information on the left. We will try our best to solve your problem within 24H (except weekends and holidays).