

Key features

Product Mode	HMM580445	HMM580445 + bluetooth	HMM800600
Material	Glass + Aluminium alloy		
Input Voltage	DC 12V (USB : 5V \approx 1.5A)		
Power	24W	36W	36W
Color Temperature	3000K-5800K	3000K-5800K	3000K-5800K
LED Bulbs	15	15	18
Product Size	58x12x44.5cm	58x12x44.5cm	80x12x60cm
Mirror Size	58x2.5x42.5cm	58x2.5x42.5cm	80x2.5x58cm
Base Size	58x12x2cm	58x12x2cm	80x12x2cm

Installation Instruction

Function description

1. Color Temperature Selection Button: press this select the color temperature of the bulb;
2. On / OFF Button : press the button and the brightness of the bulb will gradually change during the switching process;
3. Brightness Adjustment Button: long press to adjust the brightness of the bulb.



Color Temperature
Selection Button

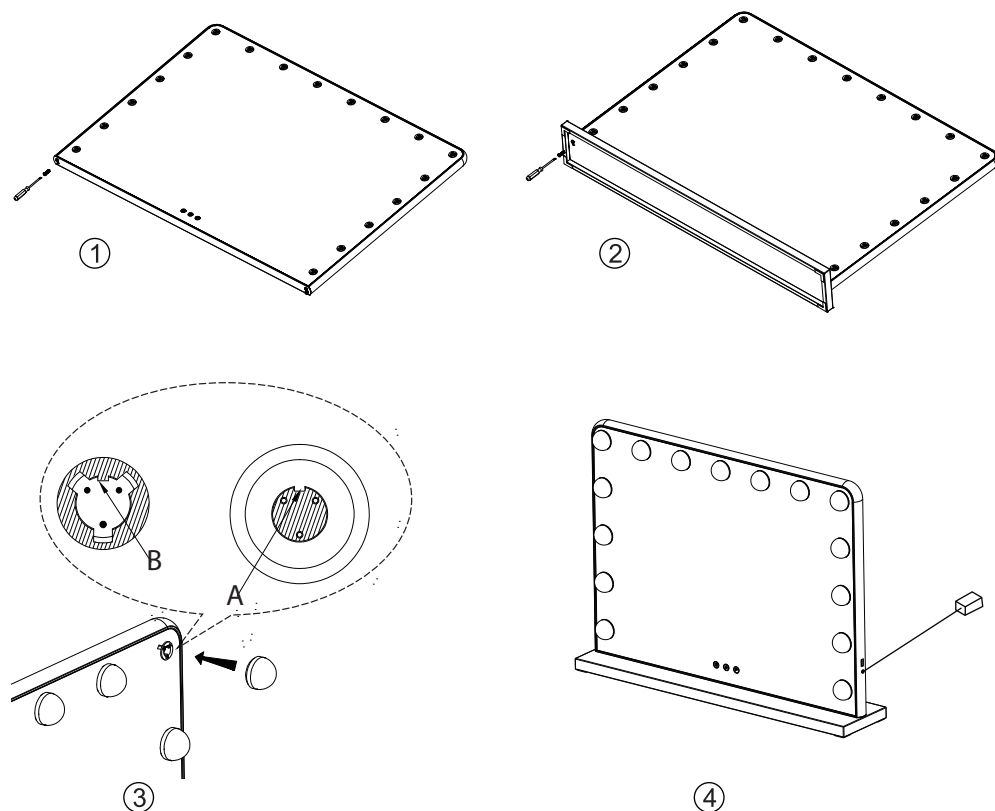


On / OFF Button



Brightness Adjustment
Button

Install vanity mirror

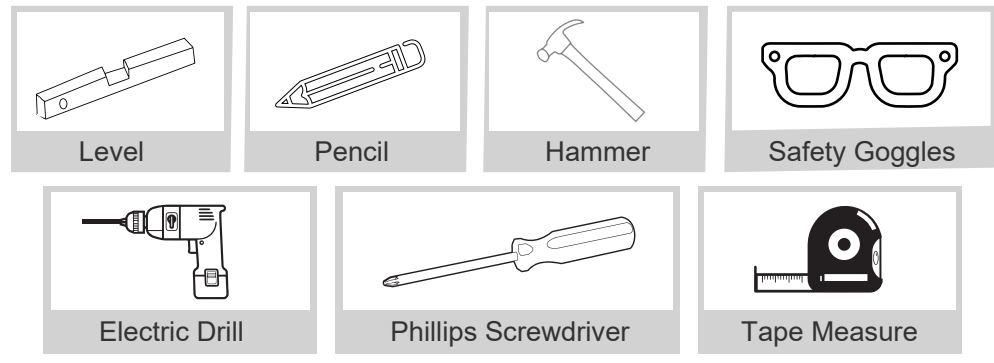


- ①. Take out the 4 screws at the bottom;
- ②. Install the base plate with the 4 screws;
- ③. Install the bulb into the slot on the mirror. Also take care to align the recesses(A) of the bulbs and the bulge(B) of the bulb holder.
- ④. After installing all the bulbs, then connect the adapter and turn on the power.

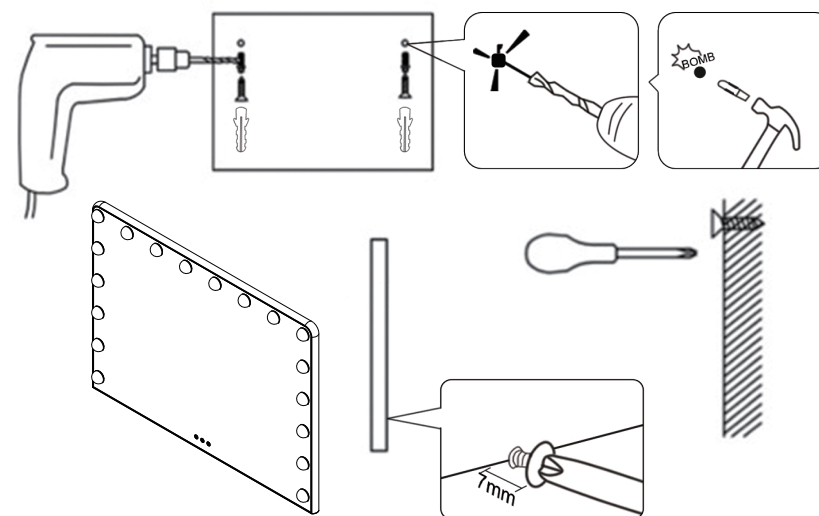
NOTE:

1. Please install all the bulbs before powering on.
2. Please be careful not to touch the bulb holder directly with your hands after power is applied to prevent possible electric shock.
3. How to remove the bulb: Turn off the power, hold the bottom of the bulb tightly and pull it out.

INSTALLATION TOOLS



Wall-mounted vanity mirror



If you want to hang the mirror on the wall, when you remove the base, you have to put the screws back on.

1. Measure the distance of two hooks centre and use the level ruler to draw a horizontal line on the wall and then mark the location of the center of hooks;
2. Use a electric drill to punch two 6mm holes at the marked spots, and then apply wall anchors with hammer;
3. Use the screwdriver to lightening the screw on the wall anchors, set aside 7mm distance to wall.
4. Mount the mirror on the wall an ensure it is sturdy.