

ASSEMBLY AND DRESSING INSTRUCTIONS

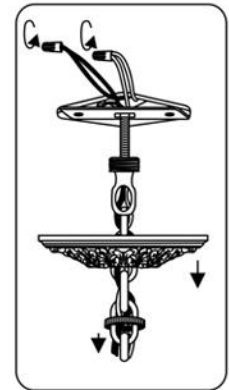
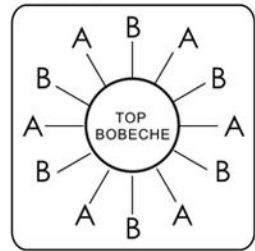
WARNING:

Electrical Danger Turn Power Off

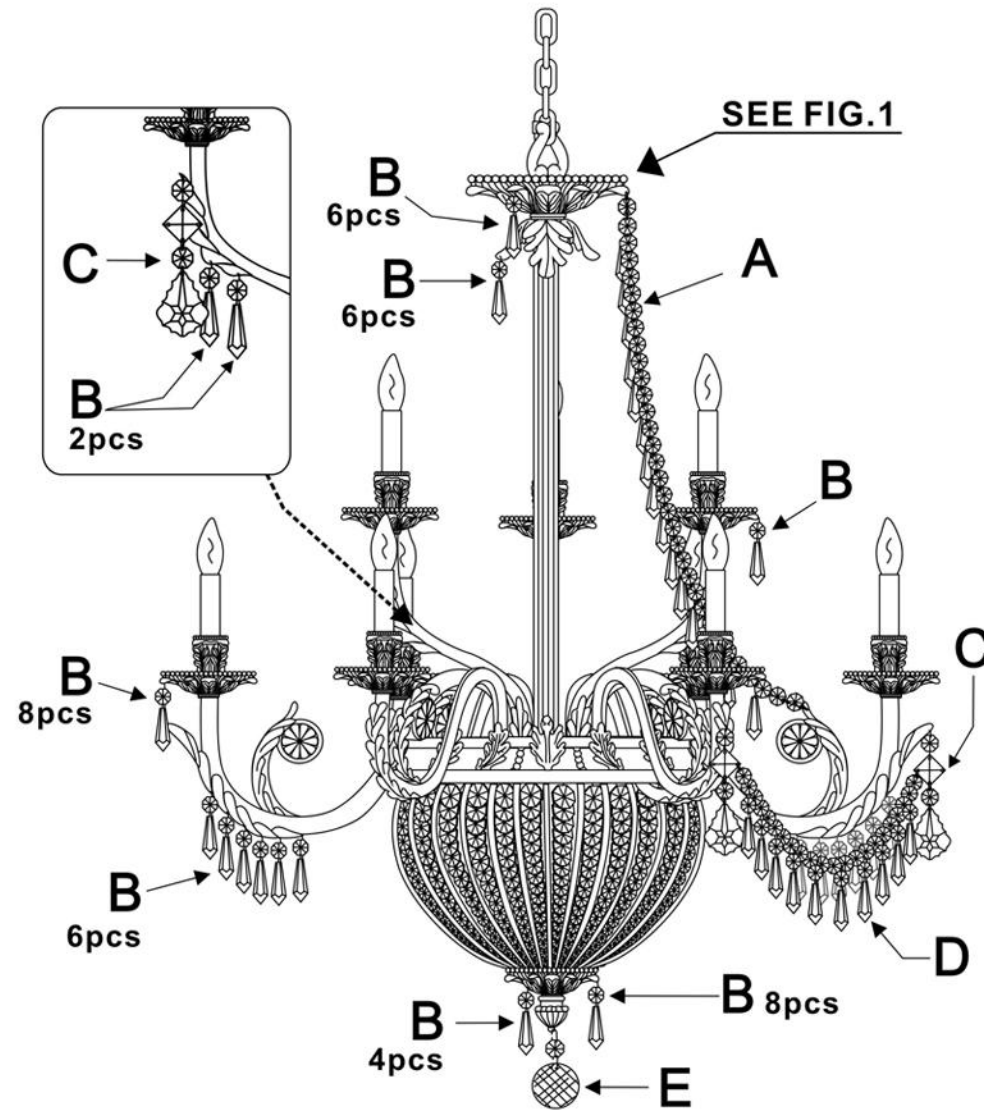
All electrical components must be installed by a licensed electrician in accordance with the National Electric Code and the appropriate local electrical codes.



FIG.1



1 Bobeche with 8 B Trim.



A= (14mm * 33pcs + 38mm * 15pcs) * 6sets

B= (14mm + 38mm) * 138sets

C= (14mm + 18mm + 14mm + 76mm) * 9sets

D= [14mm * 22pcs + (14mm + 38mm) * 10pcs] * 6sets

E= (14mm * 40mm) * 1set

You will need 12 - Cand. Bulb
40 Watts Recommended
60 Watts Max
Bulb not included.

D Trim

