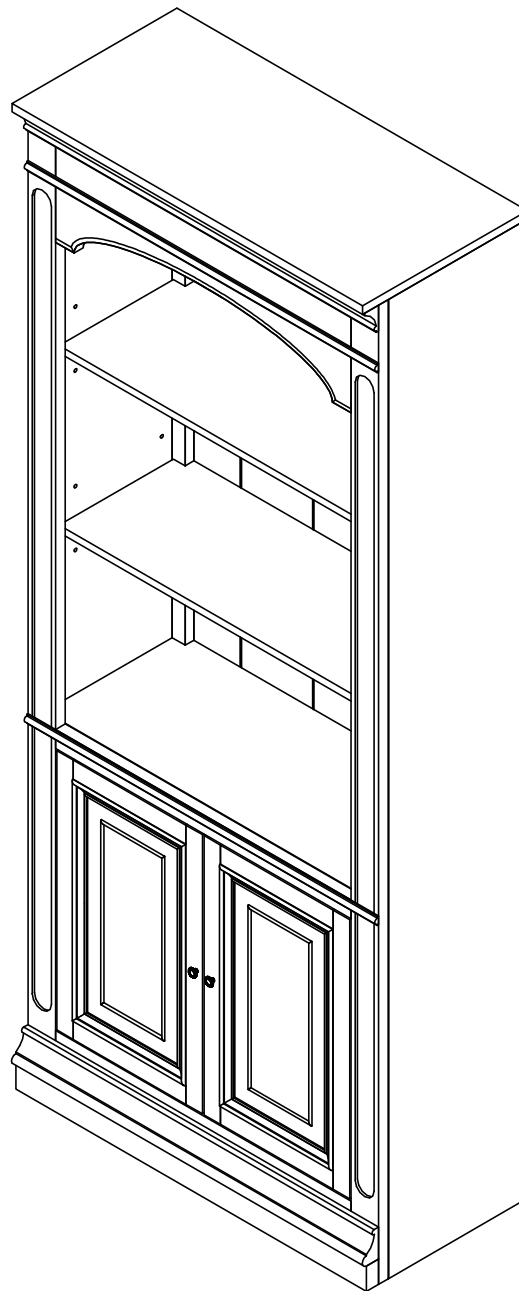






WINCHESTER ASSEMBLY INSTRUCTIONS



PARTS LIST

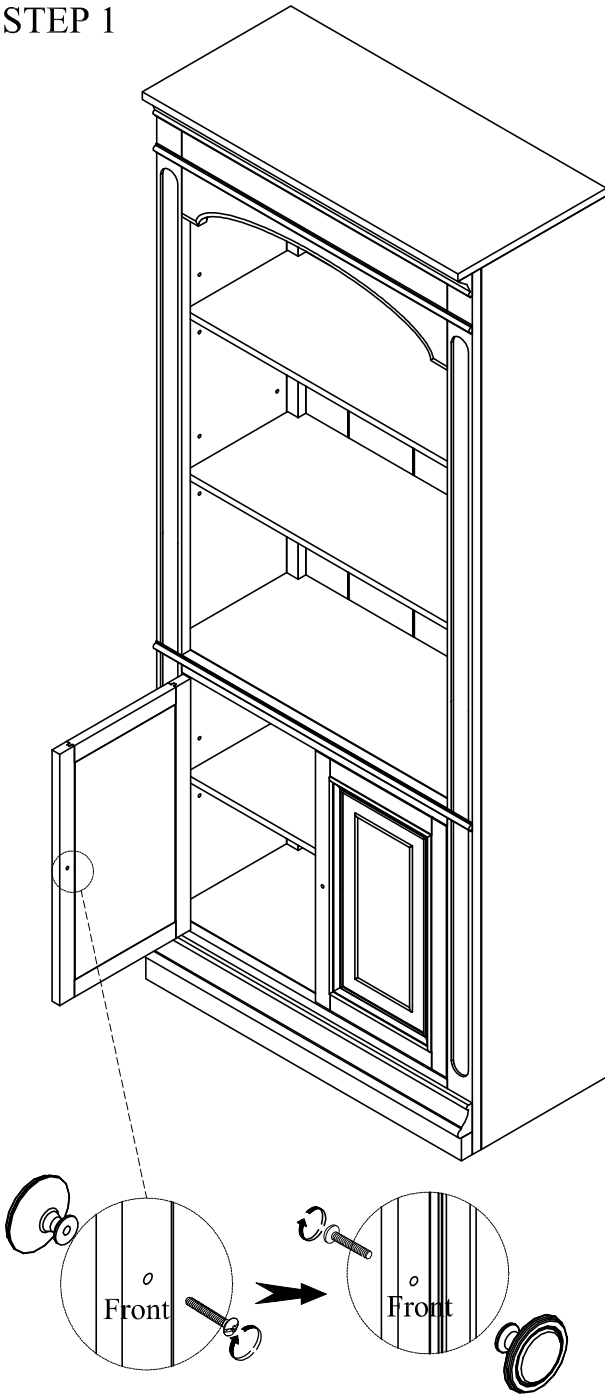
LABEL	PICTURE	DESCRIPTION	QTY
A		Bookcase	1

HARDWARE

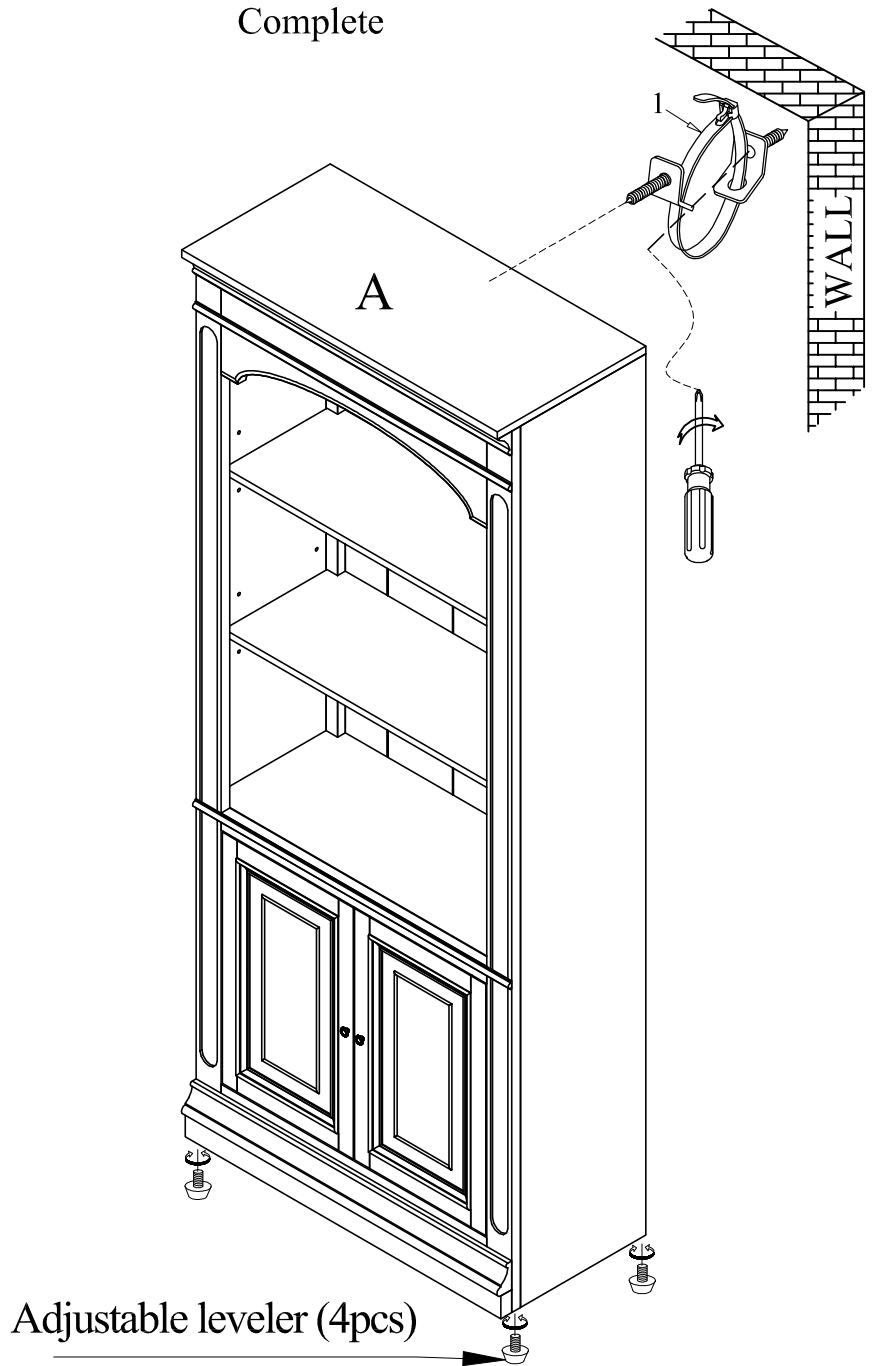
LABEL	PICTURE	DESCRIPTION	QTY
1		Anti-tip kit	1

ASSEMBLY STEPS

STEP 1



Complete



Read instructions cover to cover



Have two adults on hand for assembly



Do not assemble on flooring or carpet. Assemble on a clean non - marring surface (ex: packing foam)



Save all packing until assembly is completed

CARE & MAINTENANCE



Do not put hot items directly on furniture surface.



Do not clean furniture with harsh cleansers or polish.



Dust and wipe up spills using a clean, non-colored, lint-free cloth.



Stains may be removed with a mild soap solution and a damp cloth.



Do not place furniture under direct sunlight.



Do not place furniture near heating or cooling vents.



Do not write on furniture without a padded barrier to protect the surface.



Do not place furniture outside, for indoor use only