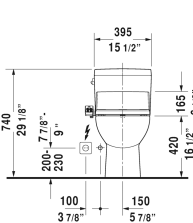
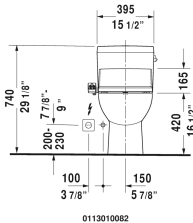
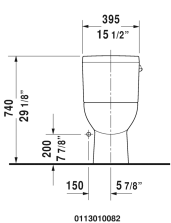
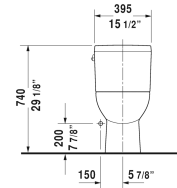
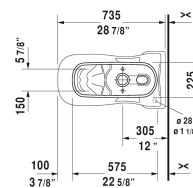
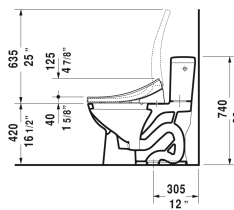
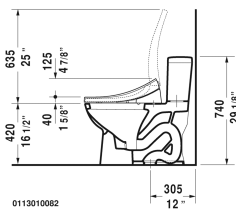
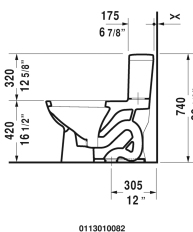
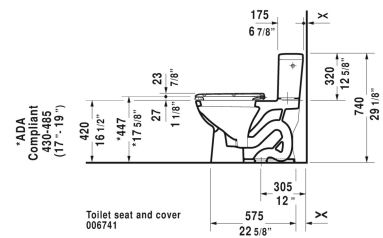
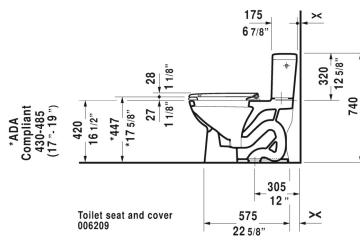
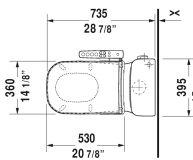
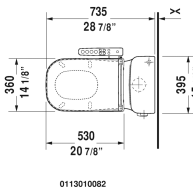
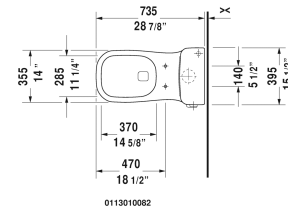
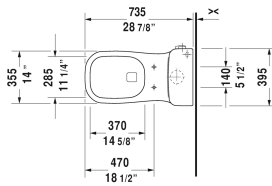
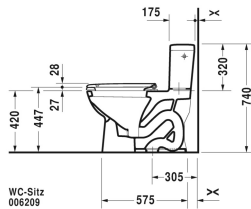



D-Code One-Piece toilet # 011301..01 / 011301..82 / 011301..01 / 011301..82

< 15 1/2" Inch >



One-Piece toilet	Dimension	Weight	Order number
syphonic, 12" rough-in, vertical outlet, cUPC® listed*, 1.28 gpf			
Colors			
00 White 20 HygieneGlaze (an antibacterial ceramic glaze that provides almost indefinite effectiveness)			
Variant			
♣ with single flush mechanism with side lever left	15 1/2" x 28 7/8" Inch	87 lb	011301..01
♣ with single flush mechanism with side lever right	15 1/2" x 28 7/8" Inch	87 lb	011301..82
♣ with single flush mechanism with side lever left	15 1/2" x 28 7/8" Inch	87 lb	011301..01
♣ with single flush mechanism with side lever right	15 1/2" x 28 7/8" Inch	87 lb	011301..82
Infobox			
* Complies with following standards: ASME A112.19.2/CSA B45.1			

D-Code One-Piece toilet  # 011301..01 / 011301..82 /
011301..01 / 011301..82

|< 15 1/2" Inch >|

Mounting set for One-Piece and Two-Piece toilets, outlet 3/8" - male thread, wall connection 1/2" - female thread, 1/2", North American version	15" Inch	1.1 lb		001431
Suitable products				
Toilet seat and cover elongated, hinges stainless steel, without slow close,				006741
Toilet seat and cover elongated, hinges stainless steel, removable, with slow close,				006209

All drawings contain the necessary measurements which are subject to standard tolerances. They are stated in inch & mm and are non-binding. Exact measurements, in particular for customized installation scenarios, can only be taken from the finished ceramic piece.