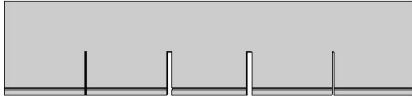


## ASSEMBLY INSTRUCTIONS

### Parts:

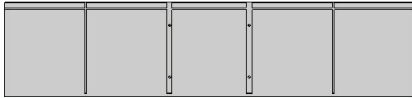
(1) 5/8" thick shelf



(2) 1/8" thick shelves



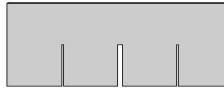
(1) Top and Bottom



(2) Backs



(2) 5/8" thick and (2) 1/8" thick dividers



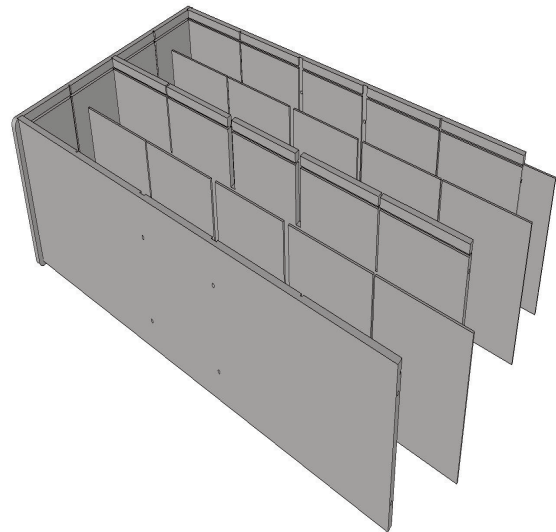
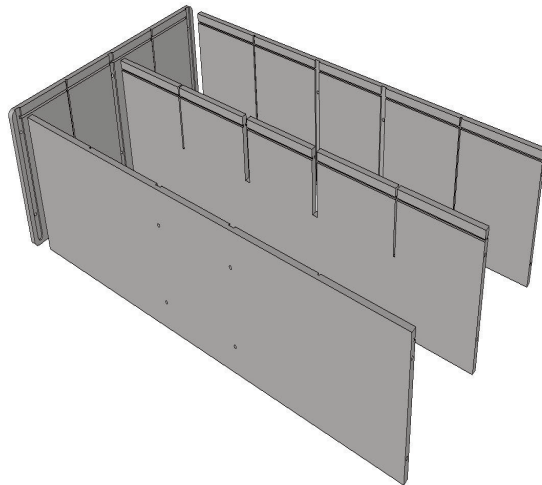
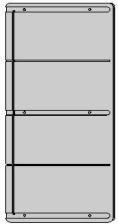
Hardware:

(20) Hex  
screws

(1) Allen wrench

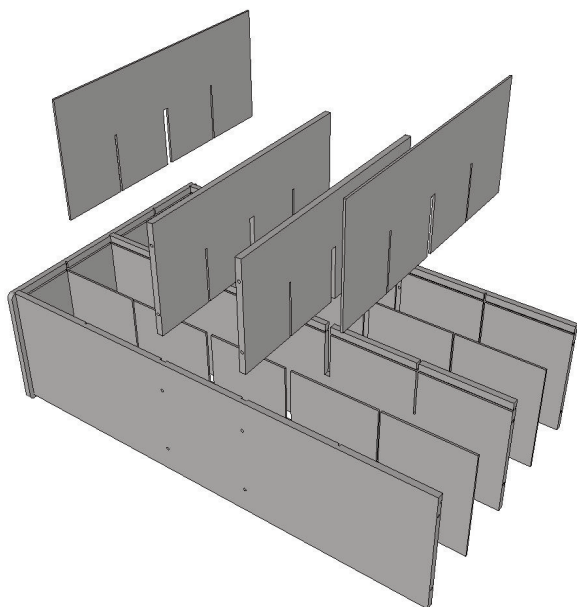


(2) Sides

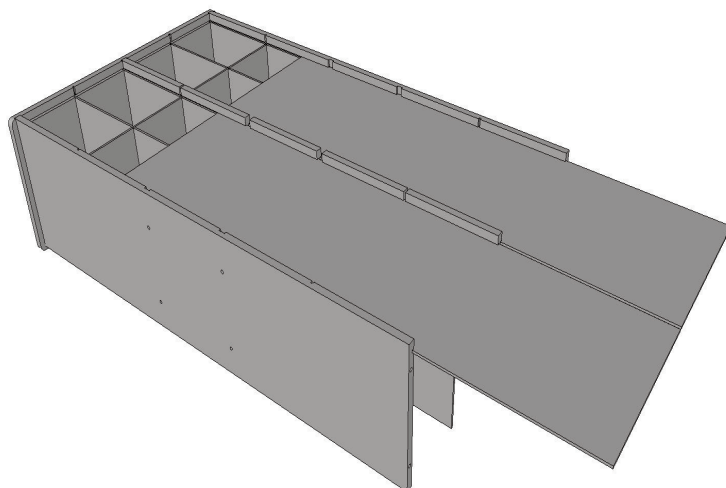


**Step 1:** Attach **Top**, **Bottom**, and **5/8" thick shelf** into a **Side** piece using (6) supplied **Hex screws** and **Allen wrench** provided. Back grooves in Top and Bottom, -cuts that go all the way through from short end to short end, align with 3/8" deep back groove in Side piece. Back grooves face inwards towards middle of Side piece. Slots in 5/8" thick shelves also point towards 3/8" deep back groove in Side piece.

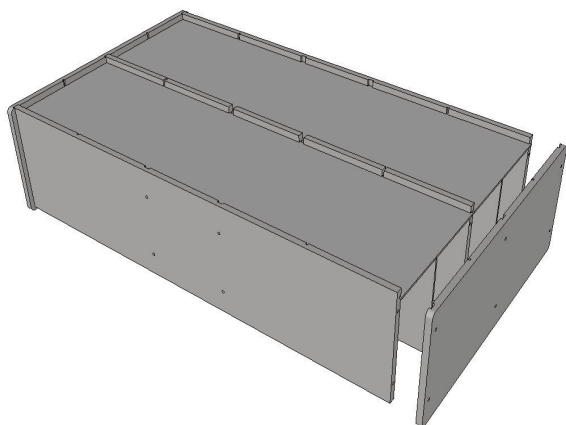
**Step 2:** Slide (2) **1/8" thick shelves** into place between 5/8" thick shelf and Top and Bottom. No hardware is required in this step.



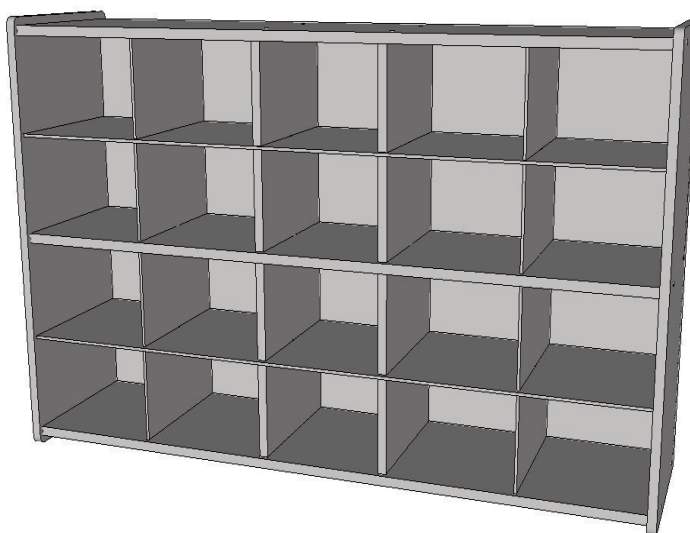
**Step 3:** Attach **(2) 5/8" thick dividers** to Top and Bottom pieces using **(8)** supplied Hex screws and Allen wrench. Slots in 5/8" thick dividers scissor into 5/8" wide slots in shelf piece. Backs of dividers, (top of dividers pictured above), sit below back grooves in Top and Bottom pieces. Repeat for **(2) 1/8" thick dividers**. No hardware is required to attach 1/8" thick dividers.



**Step 4:** Slide **(2) Backs** into place using back grooves in Top, Bottom, and 5/8" thick shelf. Backs will extend out past edge of Top, Bottom, and shelf. Do not force and make flush. Make sure backs are sitting in back groove of Side piece.



**Step 5:** Attach second **Side** piece using **(6)** supplied Hex screws and Allen wrench. Overhang on backs past Top, Bottom, and shelves will fit into deeper 3/8" back groove of second Side piece.



**Step 6:** Set unit upright, resting edges of Sides on floor. Tighten all screws snugly. **DO NOT OVER-TIGHTEN. DO NOT DRILL.** Assembly is now complete.