

BACKLESS WOOD SWIVEL STOOL

Swivel Counter Stool
Swivel Barstool







Examine all packaging material for small parts that may have come loose during shipment. Periodic checks are recommended to insure that all components are in proper position, tight and free from damage. Keep this assembly instruction for future reference. Adult assembly is required.

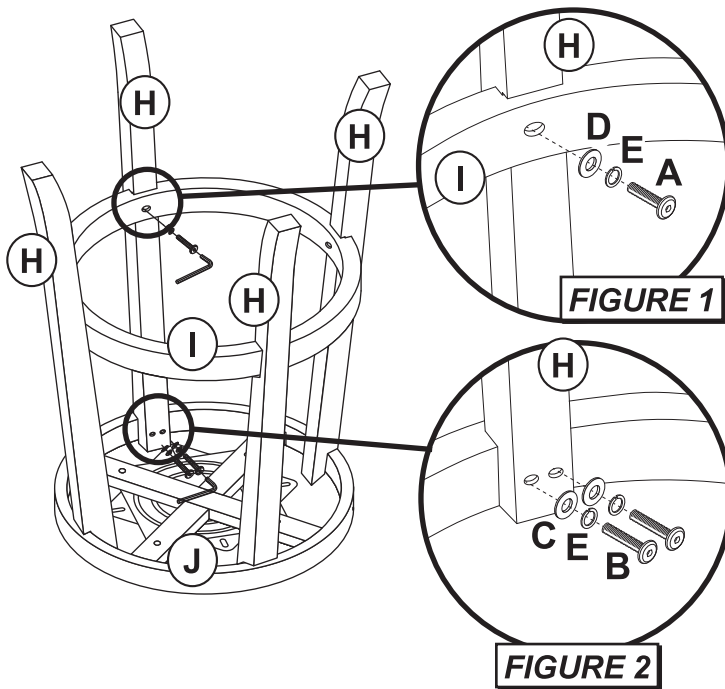
HARDWARE LIST

- A (8) Allen Screws $\phi 1/4"$ x 1-1/4"
- B (8) Allen Screws $\phi 1/4"$ x 1-1/2"
- C (12) Flat Washers $\phi 1/4"$ x 16 x 1mm
- D (4) Flat Washers $\phi 1/4"$ x 13 x 1mm
- E (16) Spring Washers $\phi 1/4"$ x 1mm
- F (1) Allen Wrench $\phi 1/4"$

PARTS LIST

- G (1) Seat
- H (4) Legs
- I (1) Footrest
- J (1) Seat Base

PART	QTY	HARDWARE	PART	QTY	HARDWARE
A	8		B	8	
C	12		D	4	
E	16		F	1	



STEP 1 - Figure 1

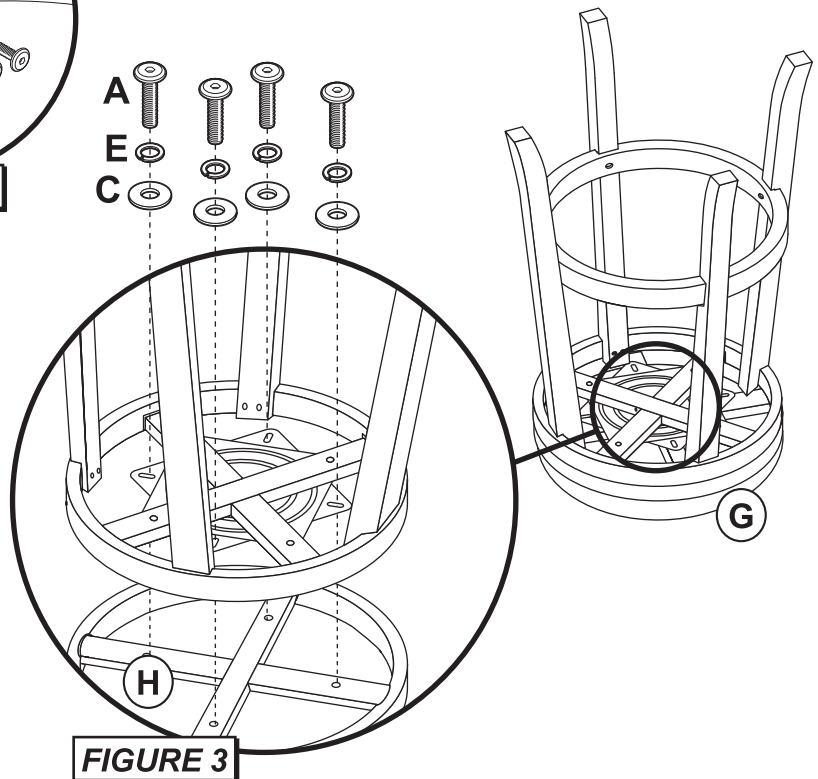
Begin assembly by attaching Legs (H) to Footrest (I) by using 1 Screw (A), 1 Spring Washer (E) and 1 Flat Washer (D) per leg.

STEP 2 - Figure 2

Attach Legs (H) to Seat Base (J) using 2 Screws (B), 2 Spring Washers (E) and 2 Flat Washers (C) per leg.

STEP 3 - Figure 3

Attach Seat Base (J) to Seat (G) using 4 Screws (A), 4 Spring Washers (E) and 4 Flat Washers (C). Tighten all screws with the Allen Wrench (F) provided. The assembly is now complete.



CARE & MAINTENANCE: The touch of a soft cloth is all the maintenance the finish will ever need. Please do not use harsh or abrasive cleaners for polishing, as they may cause damage to the finish. Periodic checks are recommended to make sure that all bolts, screws and nuts are securely tightened.