

145.00 mm

145.00 mm

CLEANING

- Always switch the fan off and unplug it before cleaning.
- Clean the parts using a damp cloth and a mild detergent, and ensure that all detergent residues are removed.
- Never use abrasive cleaning agents or solvents.
- Do not immerse in any form of liquid.

WARNING: in order to reduce the risk of fire or electric shock, never use the appliance together with an electronic timer.

SAFETY PRECAUTIONS

- 1) This appliance is not intended for use by persons (including children) with reduced physical, sensory or mental capabilities, or lack of experience and knowledge, unless they have been given supervision or instruction concerning use of the appliance by a person responsible for their safety.
- 2) Children should be supervised to ensure that they do not play with the appliance.
- 3) Have any repairs carried out solely by a qualified electrician. Never try to repair the appliance yourself.

INSTRUCTION MANUAL

8" METAL RETRO STAND FAN

HIFANSTANDRETRO 8B



PLEASE READ INSTRUCTIONS CAREFULLY
BEFORE OPERATING

back cover

cover

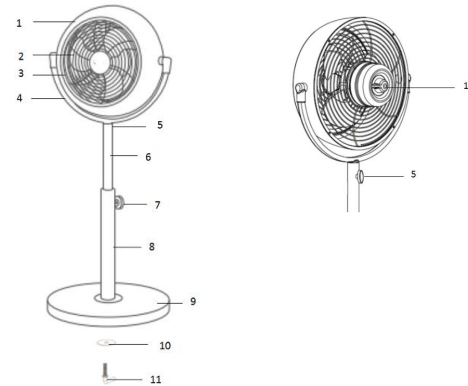
210.00 mm

INSTRUCTION MANUAL

To get the best out of your fan, please read these instructions carefully before using it for the first time. We also recommend that you keep the instructions for future reference, so that you can remind yourself of the functions of the fan.

OVERVIEW OF FUNCTIONS

1. Fan housing
2. Fan blade
3. Front fan grill
4. "U" holder
5. Neck lock knob
6. Standing pipe (up)
7. Height adjustable knob
8. Standing pipe (down)
9. Round base
10. Base washer
11. Base lock screw
12. Switch



TECHNICAL DETAILS

Model: HIFANSTANDRETRO8B

Rated voltage: AC 120V~ 60Hz

Rated power: 20W



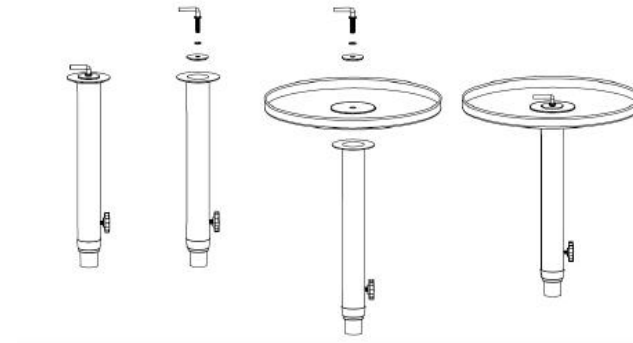
IMPORTANT SAFETY MEASURES

Please ensure that the voltage of the fan corresponds to the mains voltage.

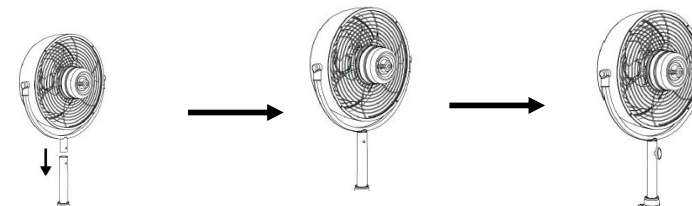
- Use the fan only for the purpose(s) defined in the user guide.
- Never insert your fingers, pencils or other objects through the fan cage during operation.
- Switch the fan off before moving or cleaning.
- The fan should be set up on a stable and level surface to avoid it being knocked over.
- Do not expose the fan to excessive heat or humidity, as this can cause damage to the electrical components.
- Do not immerse in any form of liquid.
- It is not advisable to expose people, in particular babies and the elderly, to a continuous stream of cold air.
- The fan should be kept out of reach of children.
- Ensure that the cable does not get caught beneath the device, in drawers, behind shelves etc.
- Do not run the cable under carpets, rugs, etc.
- Ensure the cable is kept away from busy areas to avoid anyone tripping over it.
- Do not use if the device or cable becomes damaged. Take it to a specialist for repair.
- For indoors use only.

SETTING UP THE FAN

- STEP 1: Remove the "Base washer" and "Base lock screw" from the bottom of the standing pipe (down), Put the base to contact with bottom of the standing pipe (down), lock the washer and screw as Following:



- STEP 2: Remove the "Neck lock knob" from the main body, and then Install the fan main body on the top of the standing pipe (up) as following:



Then, put the "Neck lock knob" through the holes of the neck pipes and tight it

USE

The fan has 3 speed settings:

- 0- Fan is off
- 1- Lowest speed
- 2- Medium speed
- 3- Top speed

Tilt adjustable, press the fan main body to select your target angle for using

The height can be adjusted.

Loosen the screw to move the stand up or down as required. Tighten the screw at the desired position.