

ASSEMBLY INSTRUCTION

Dear customer,

Thank you so much for purchasing the product from us, we really appreciate your support.

We are aimed to provide the best shopping experience to our customers. We also want to build a mutually beneficial relationship with our customers, and step further to make our brand both reliable, responsible and recommendable.

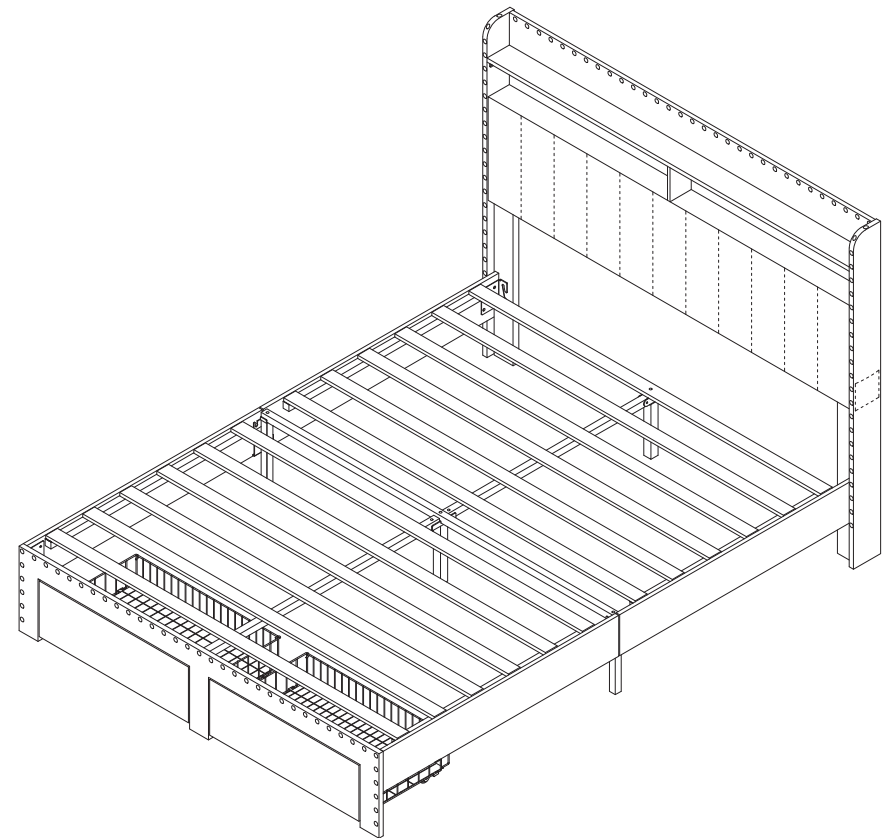
We hope that our products could meet your needs and expectations, please consider us again if you need more products for your home and kitchen.

The package would be out of our control during shipping, please contact us through your purchasing channel directly if there is anything wrong with the box or contents. We are always here offering you our service.

We will reply your messages within 24 hours, please kindly wait for the response from our professional service team.

Your comfort and contentment are of utmost importance.

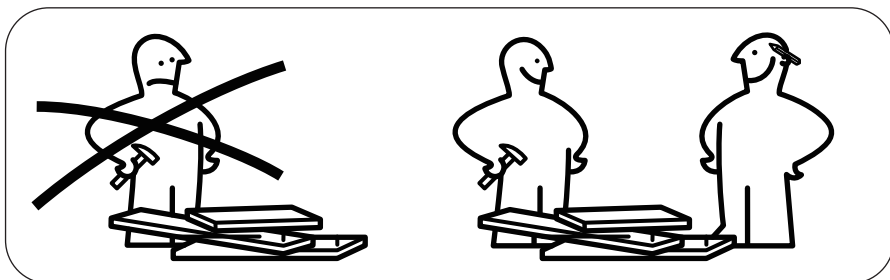
Best Regards,
Customer Care Specialist



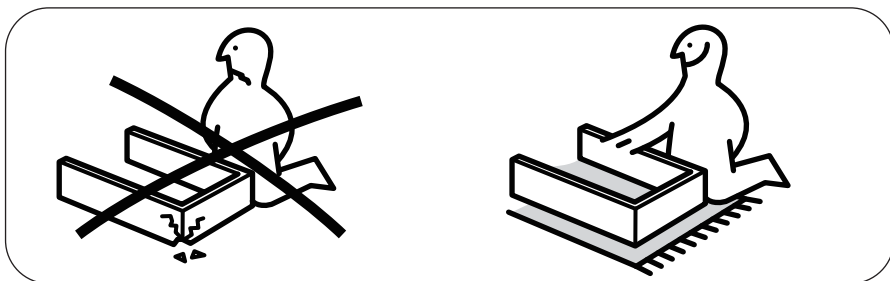


WARNING

Need Two Or More People To Complete Assembly

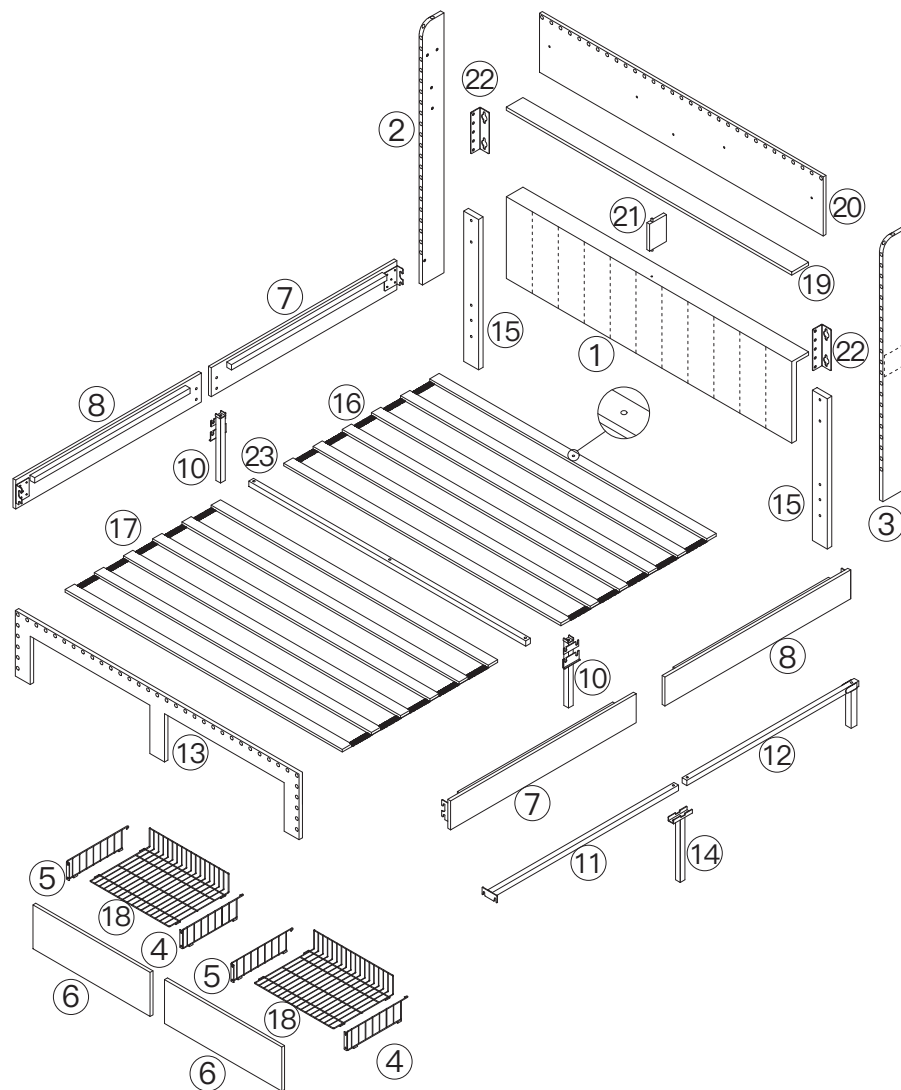


Assemble Item On a Clean Flat Surface

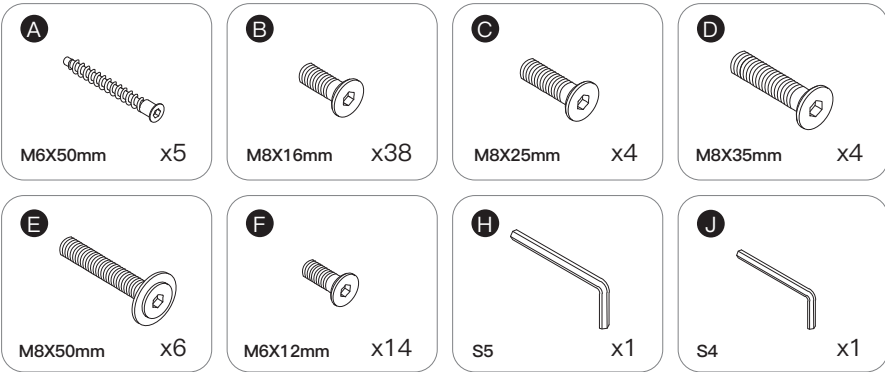
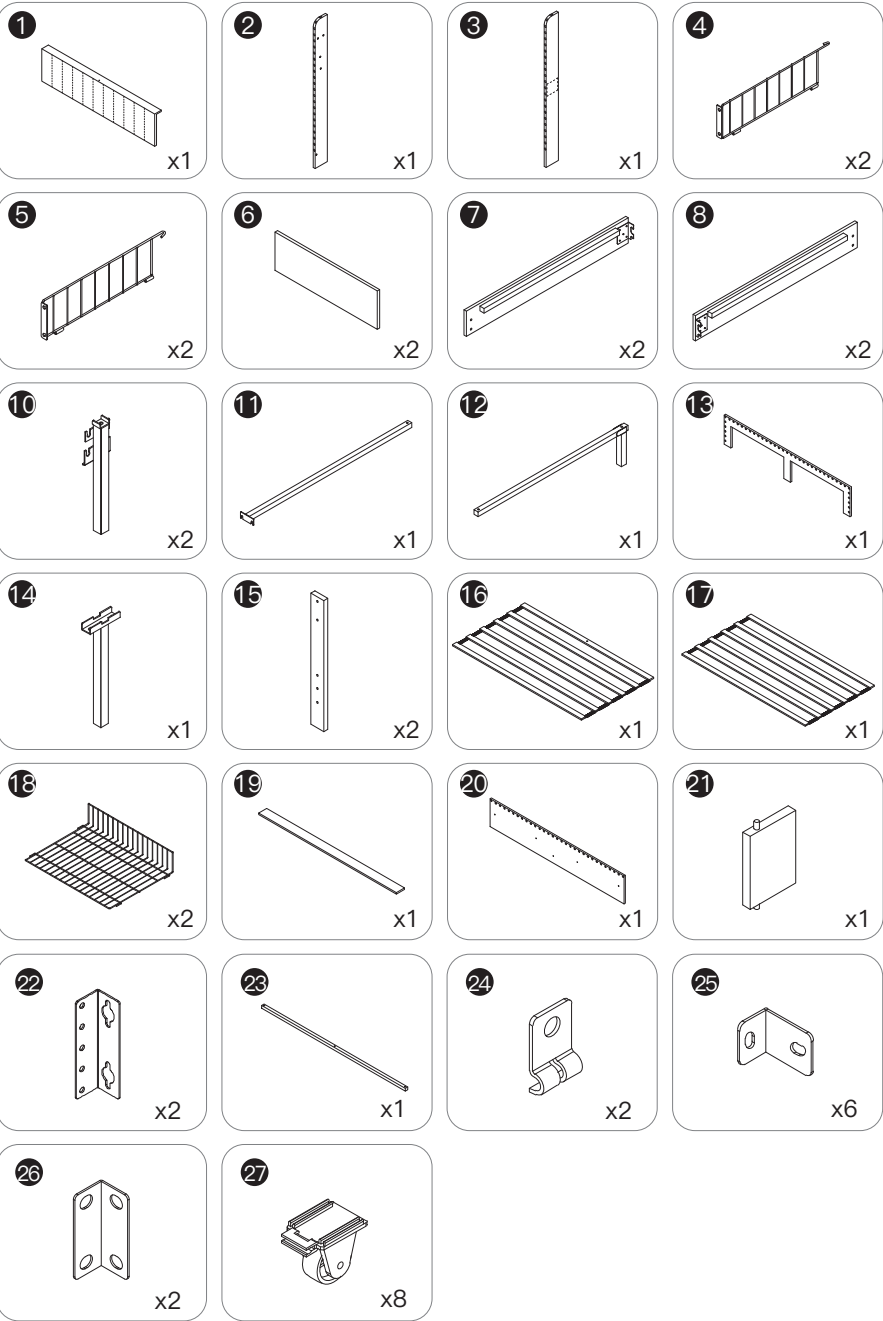


- Please check you have all hardware before assembling.
- Please ensure you have the name of the item and hardware part required and quantity.
- If you have any questions, please contact us by original purchase platform. we will reply you ASAP.

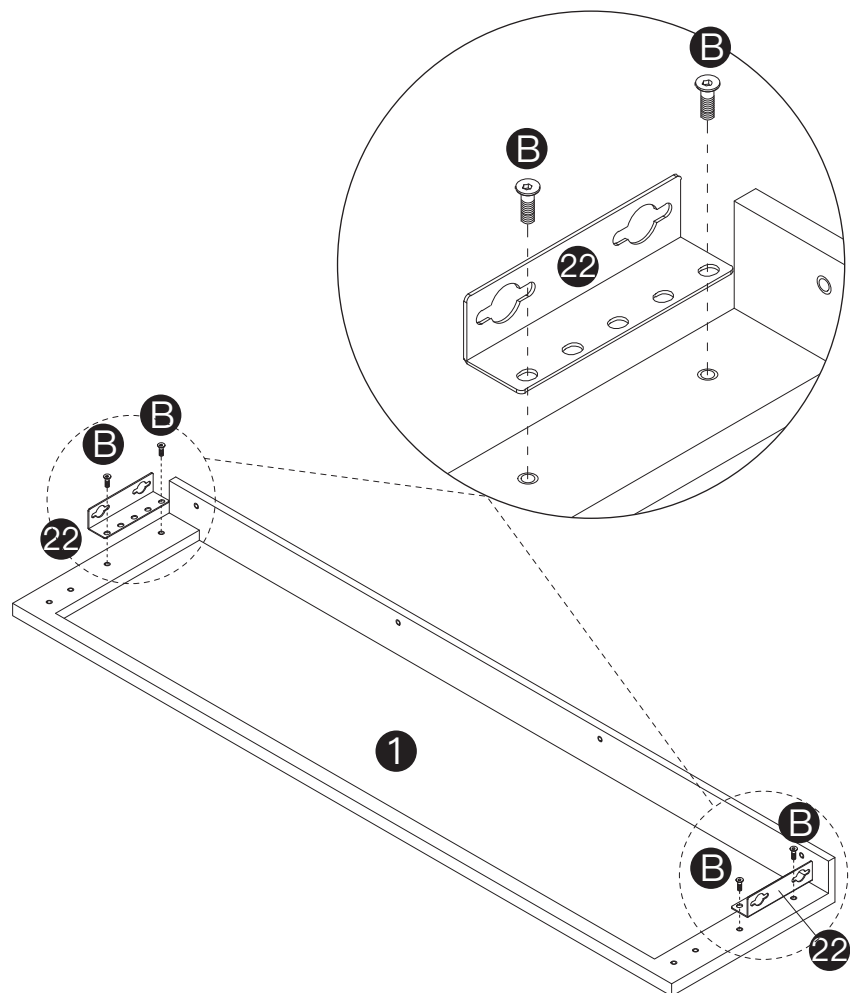
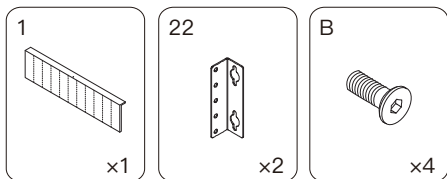
EXPLODED DRAWING:



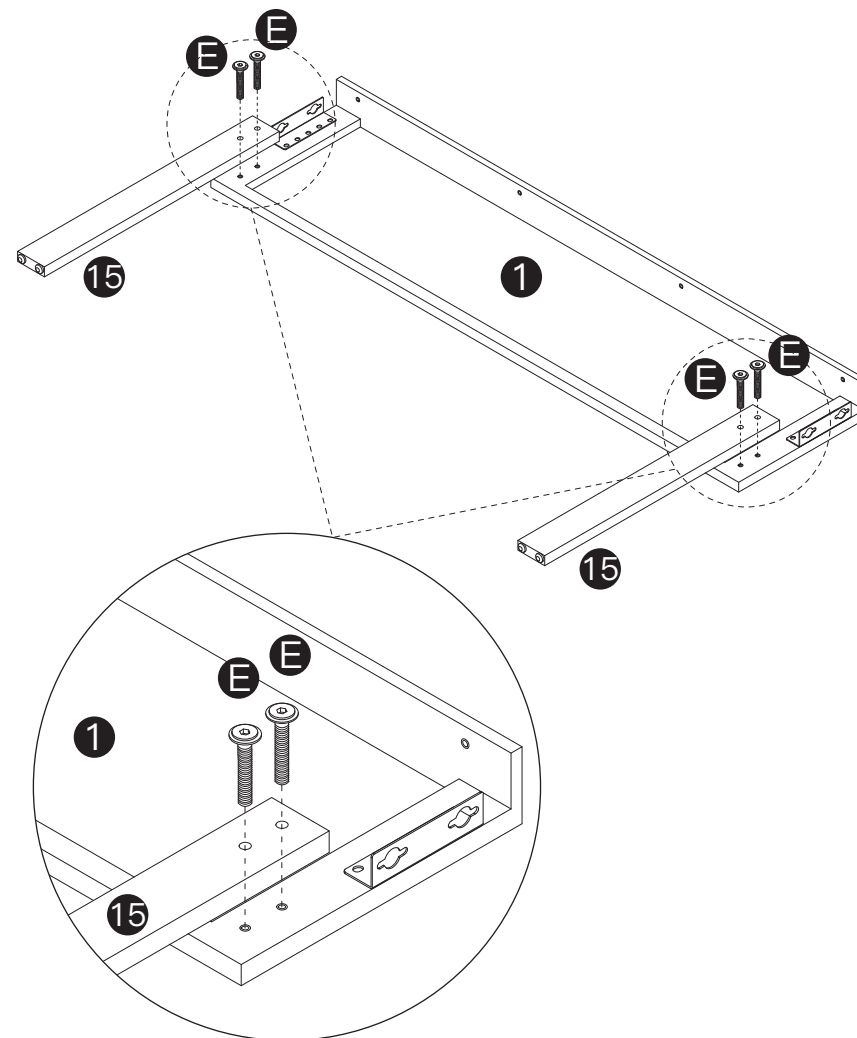
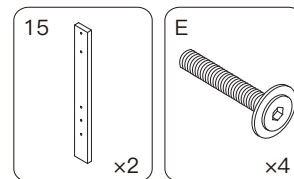
PARTS:



Step 1 Install part 22 on part 1, use part B to screw them.

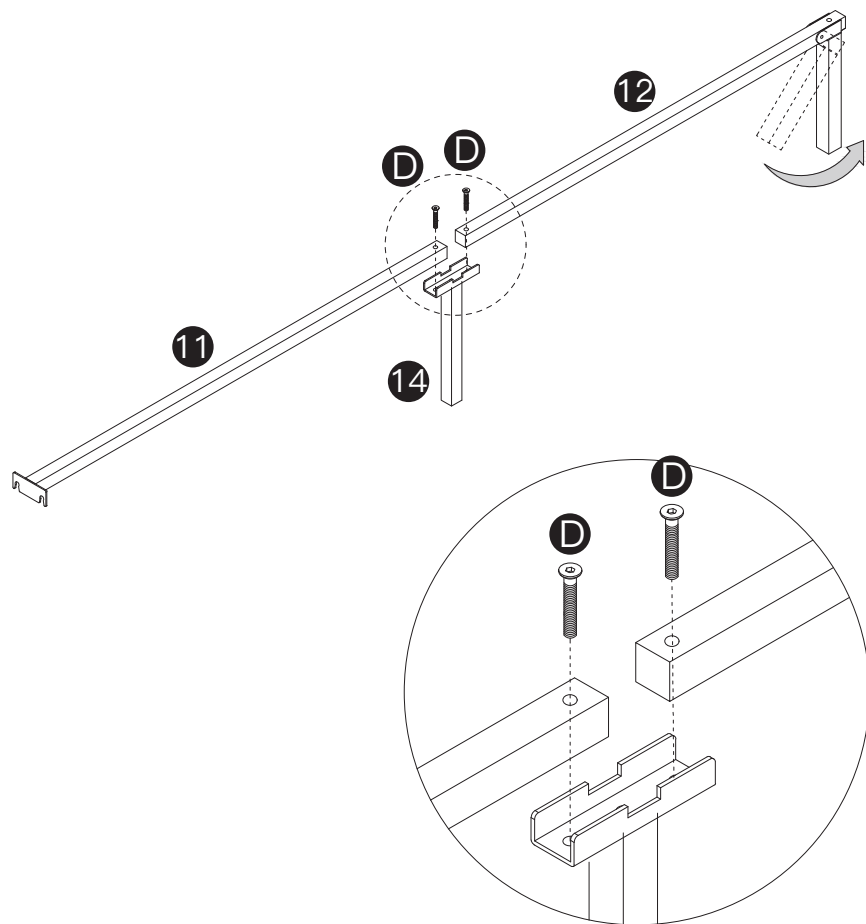
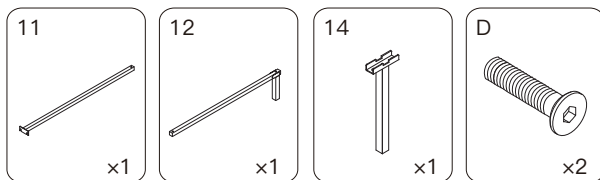


Step 2 Install part 15 on part 1, use part E to screw them.



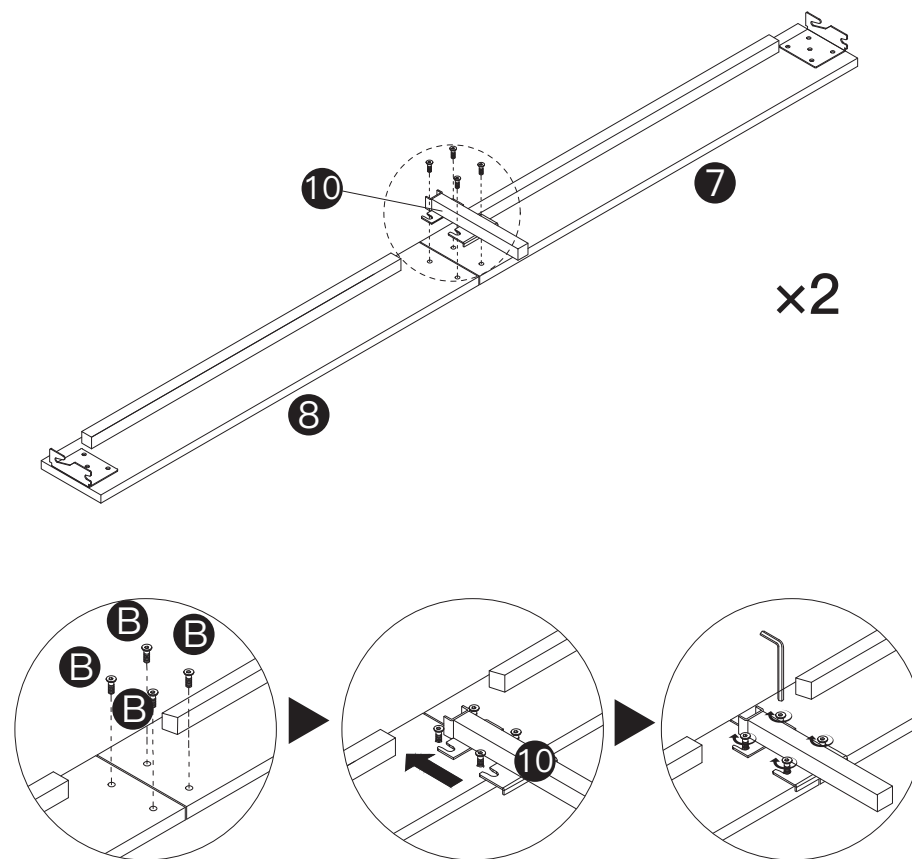
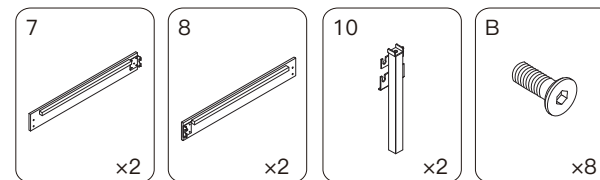
Step 3

Connect part 11 and part 12 with part 14, use part D to screw them.



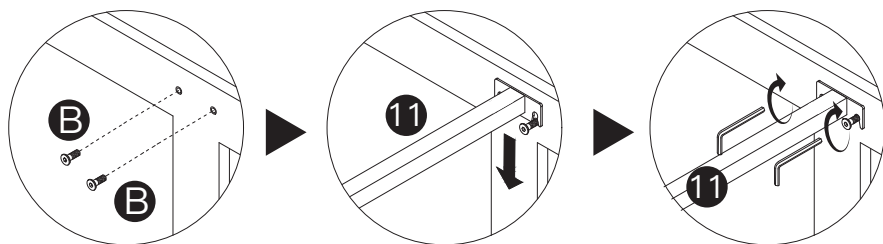
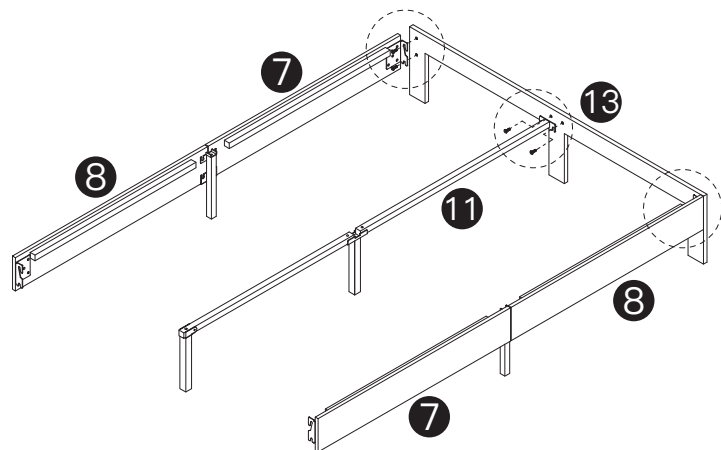
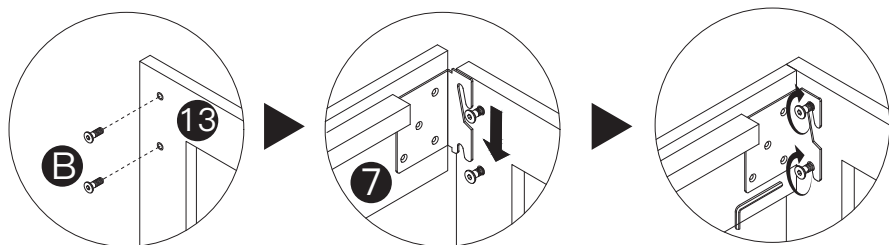
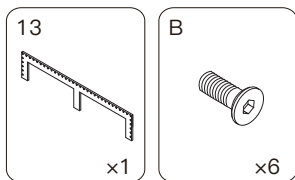
Step 4

Connect part 7 and part 8 with part 10, use part B to screw them.



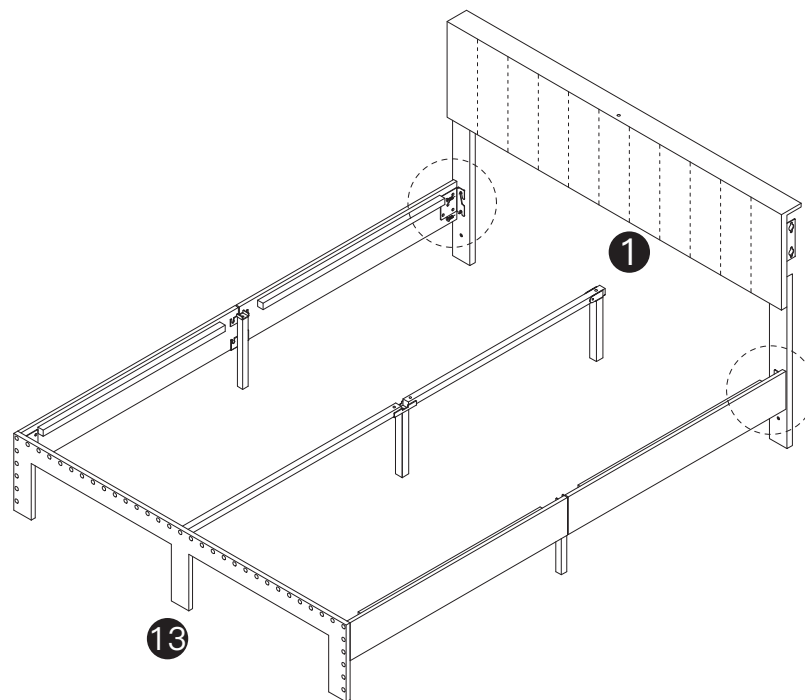
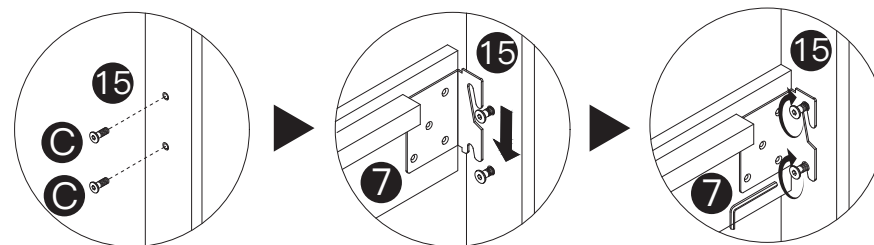
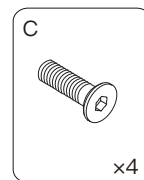
Step 5

Install part **B** on part **13** (NOT TIGHTEN), mount 3 parts previously assembled onto part **13**, then screw them tight.



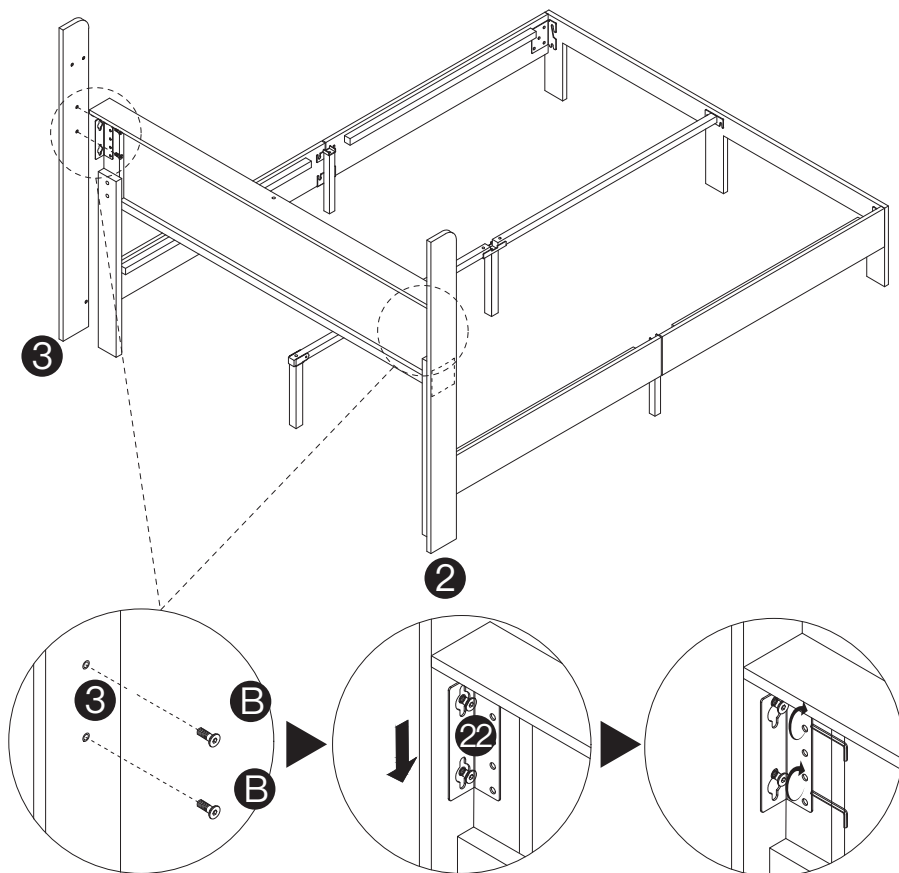
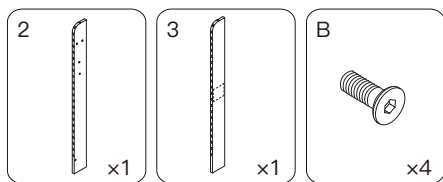
Step 6

Install part **C** on part **15** (NOT TIGHTEN), mount 3 parts previously assembled onto part **15**, then screw them tight.



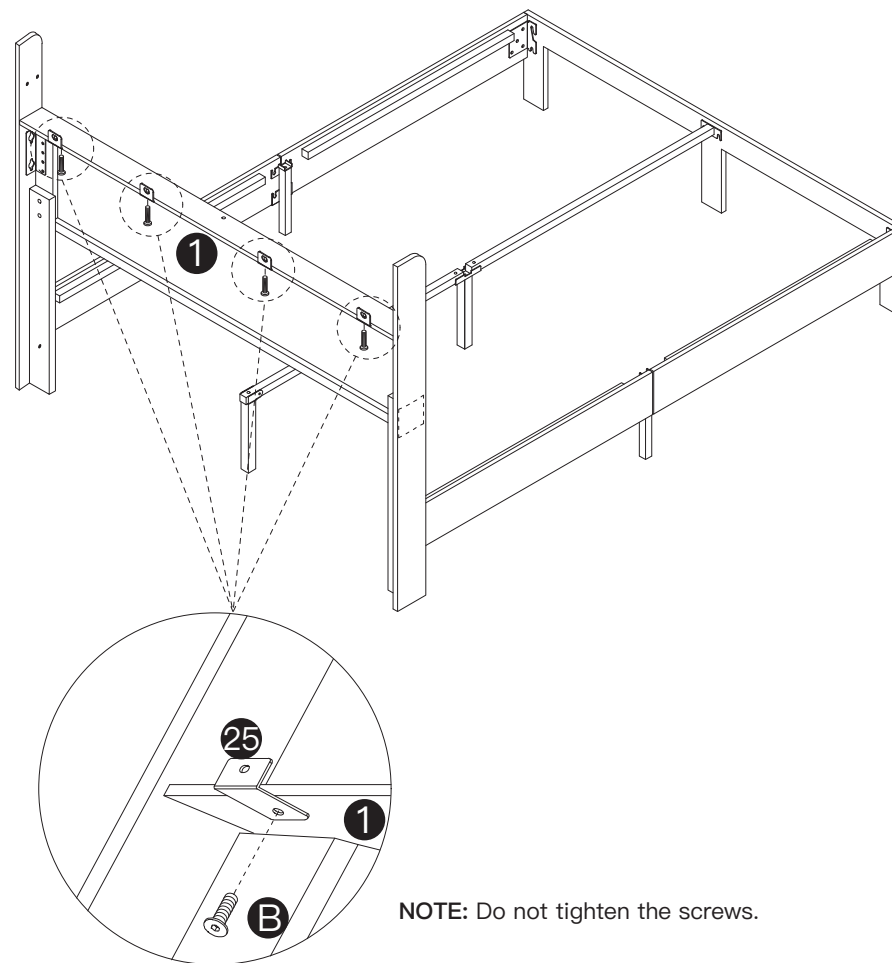
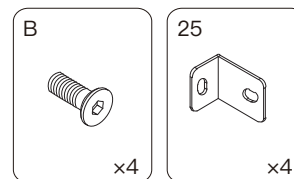
Step 7

Install part **B** on part **3** (NOT TIGHTEN), mount part **22** onto part **3**, then screw them tight.



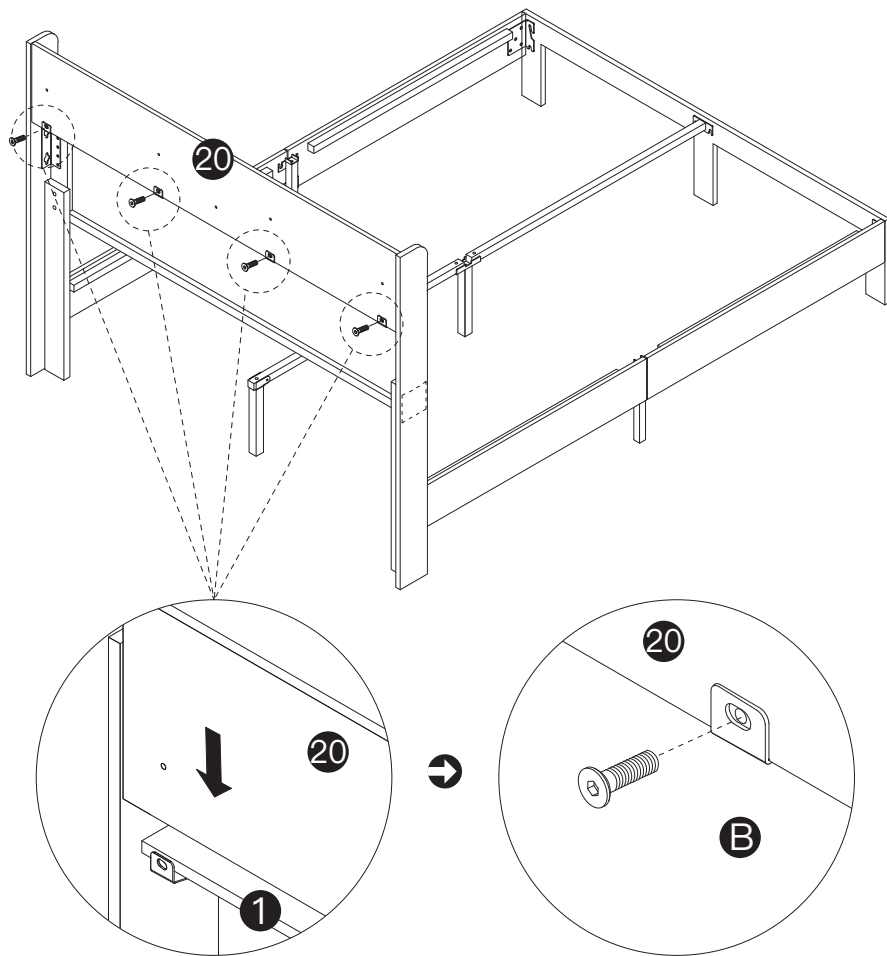
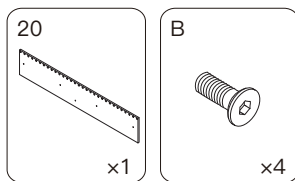
Step 8

Install part **25** on part **1**, use part **B** to screw them.



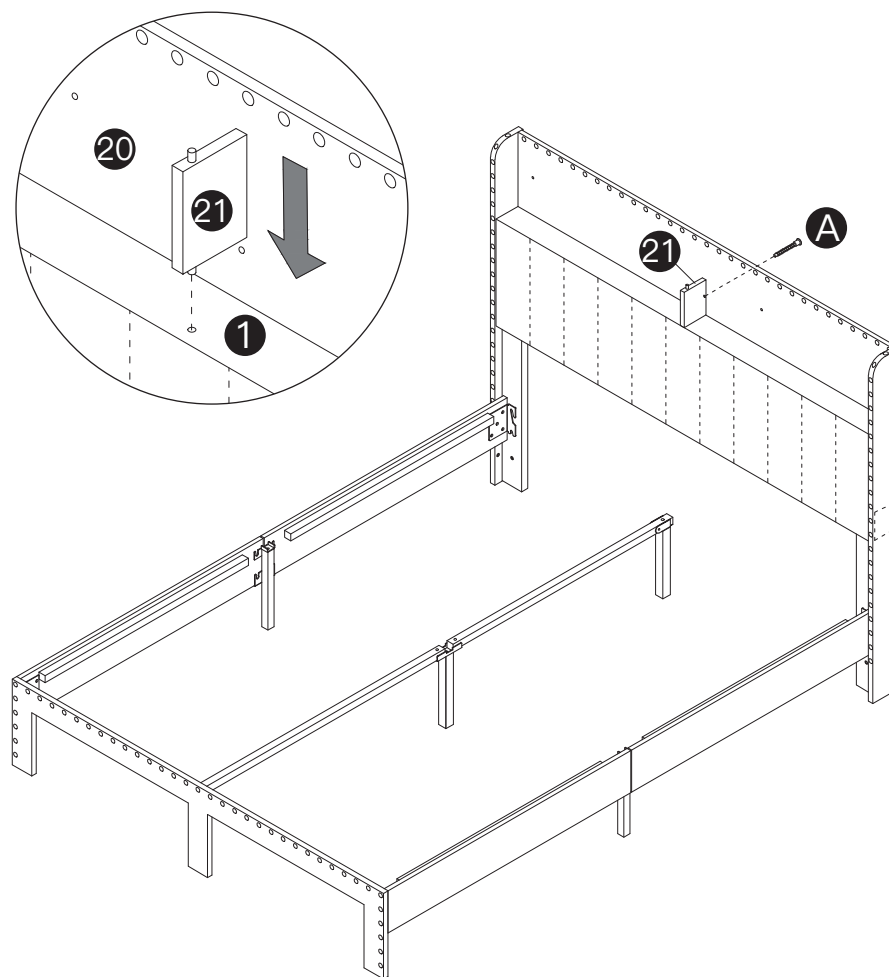
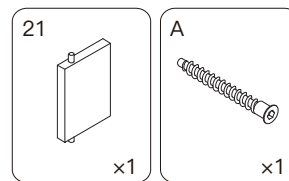
NOTE: Do not tighten the screws.

Step 9 Connect part 20 and part 1, use part B to screw them.

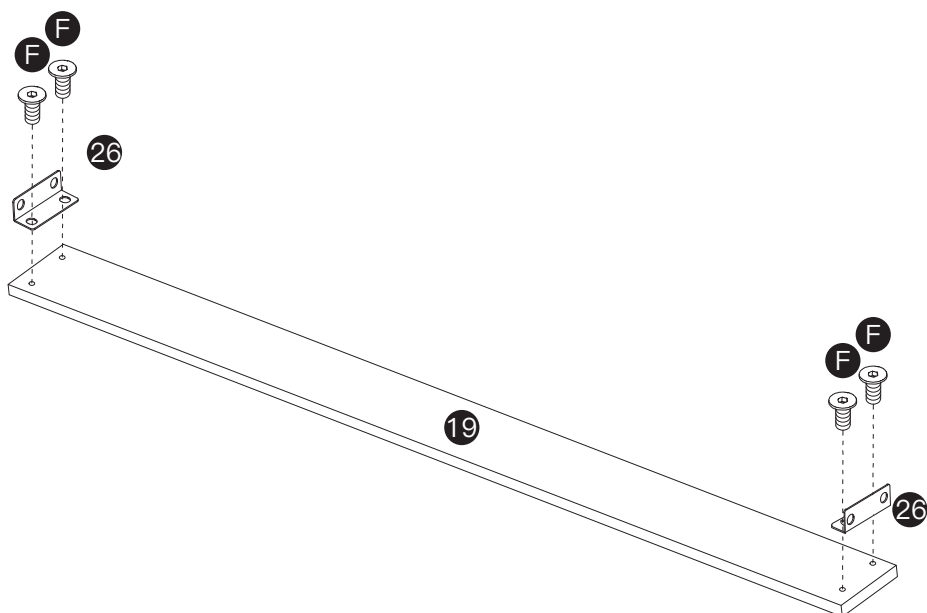
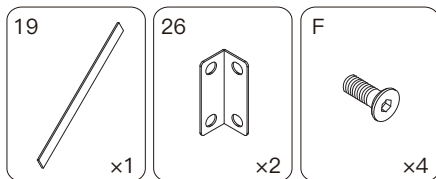


NOTE: Tighten all the screws (part B) after installing part 20.

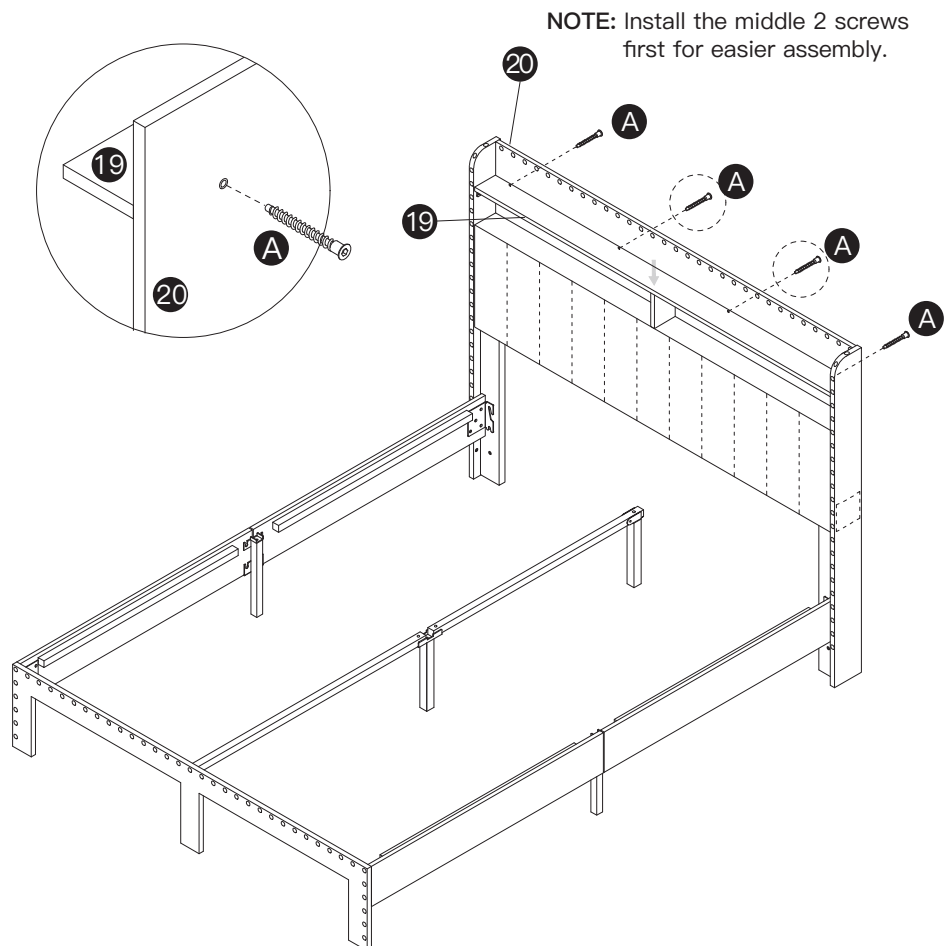
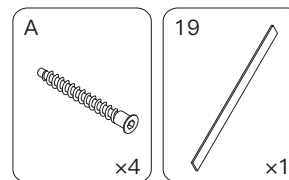
Step 10 Install part 21 on part 1, use part A to screw them.



Step 11 Install part 26 on part 19, use part F to screw them.

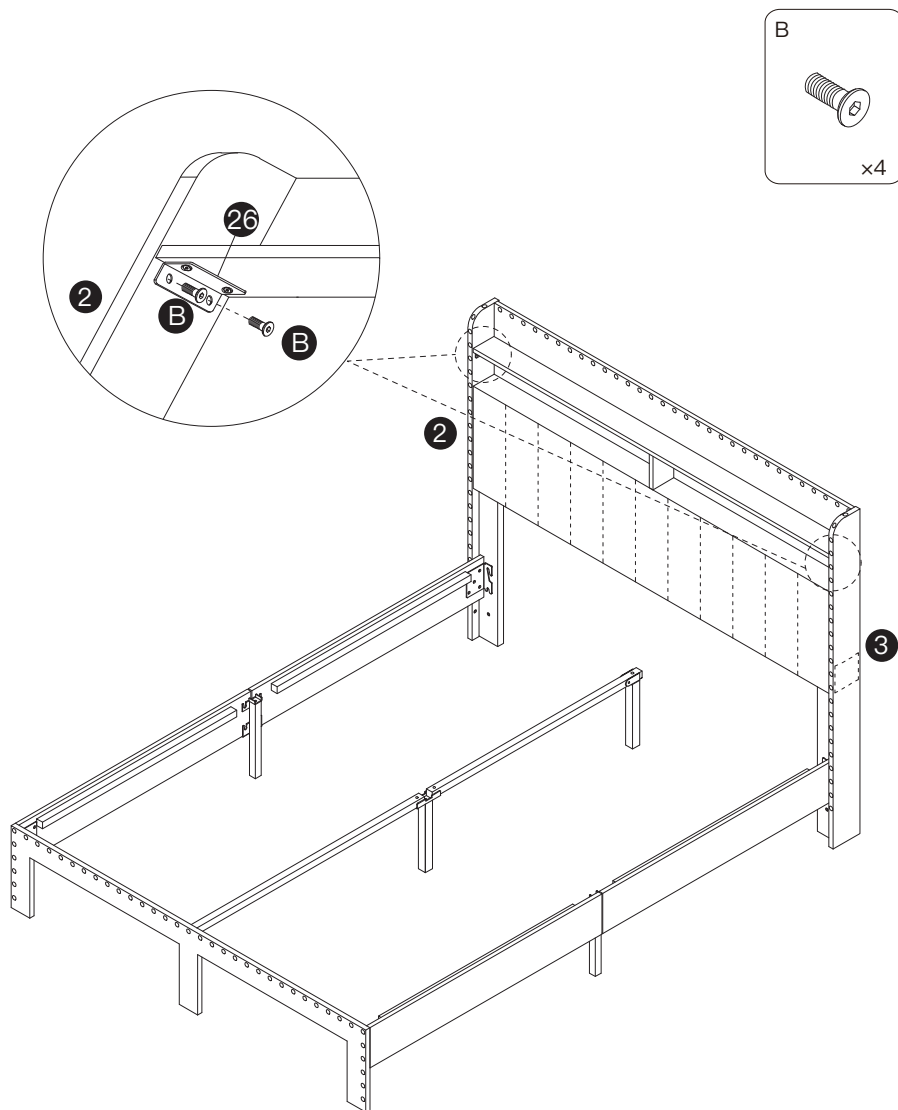


Step 12 Install part 19 on part 20, use part A to fix them. (DO NOT TIGHTEN)



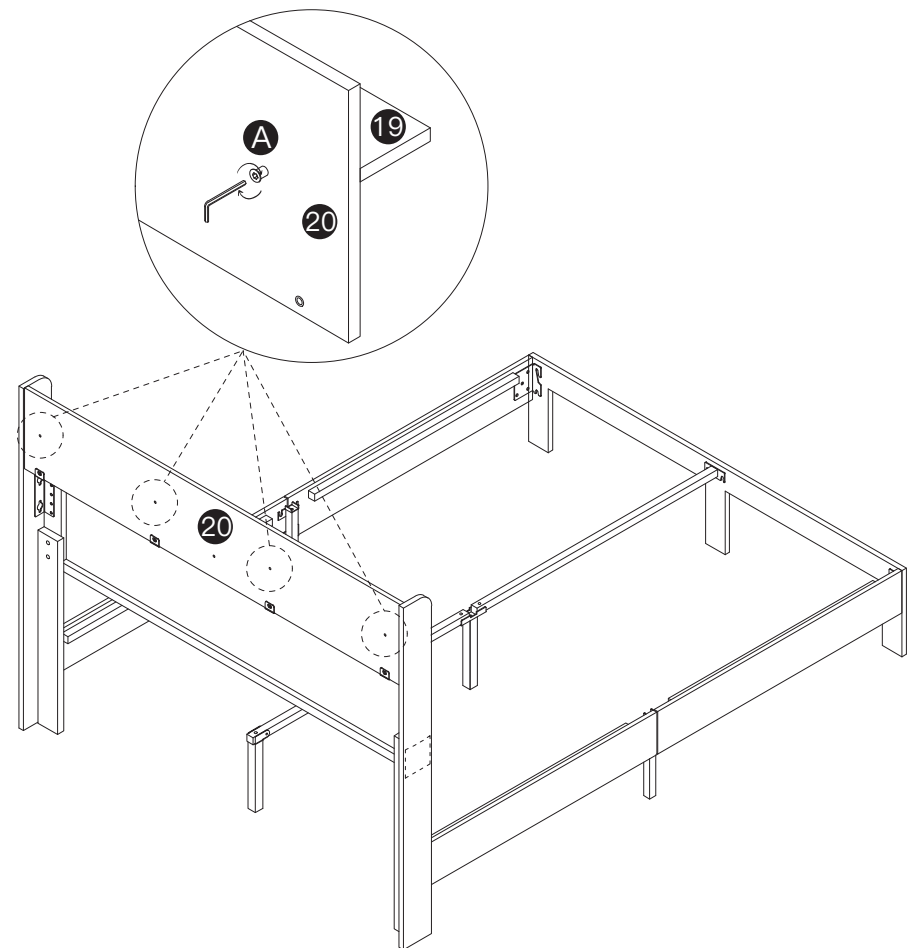
Step 13

Connect part 26 and part 2 & 3 respectively, use part B to screw them.



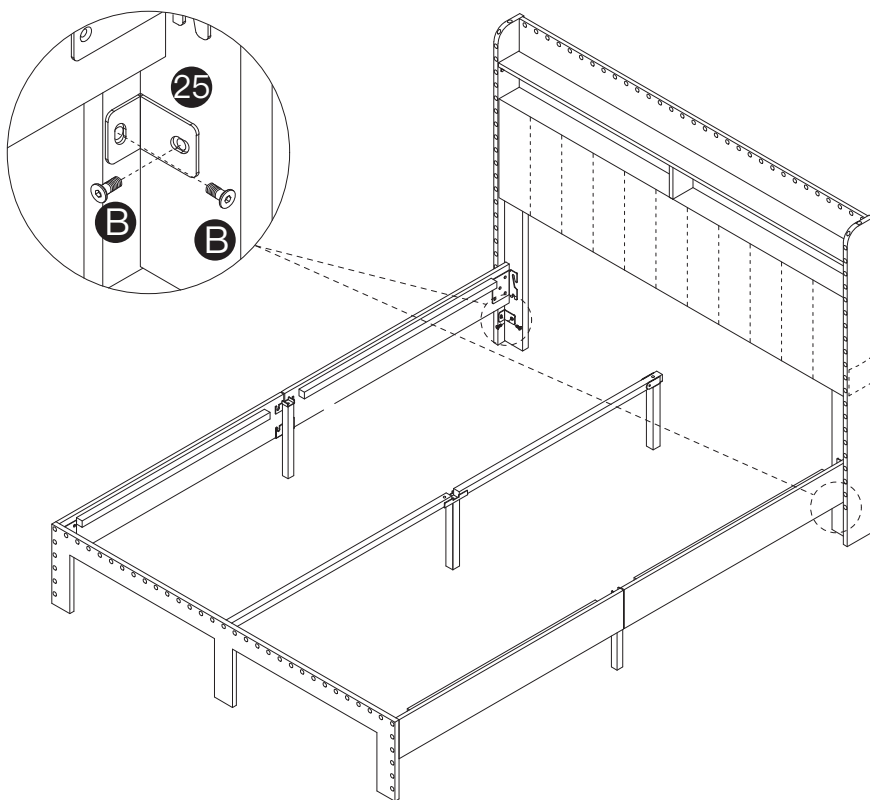
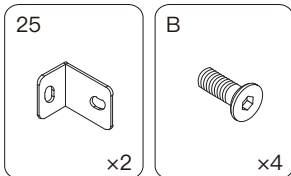
Step 14

Tighten part A to lock them.



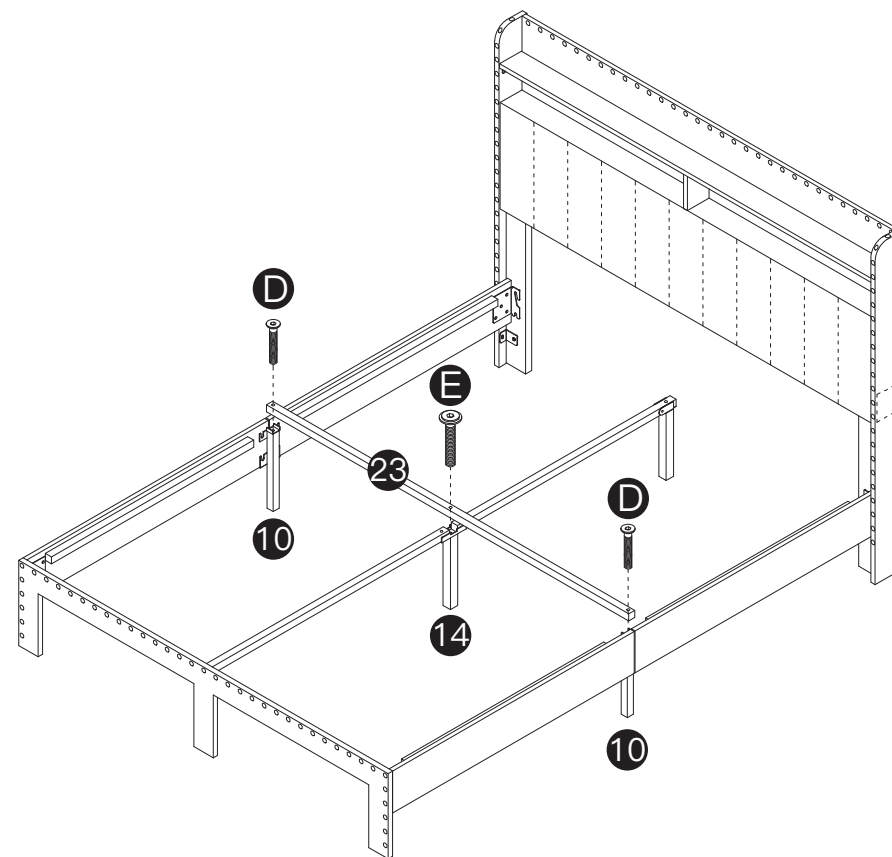
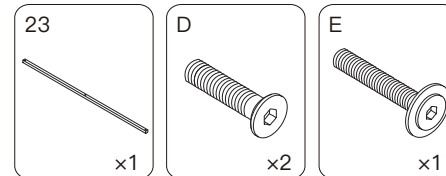
Step 15

Install part 25 on each side of part 1, use part B to screw them.



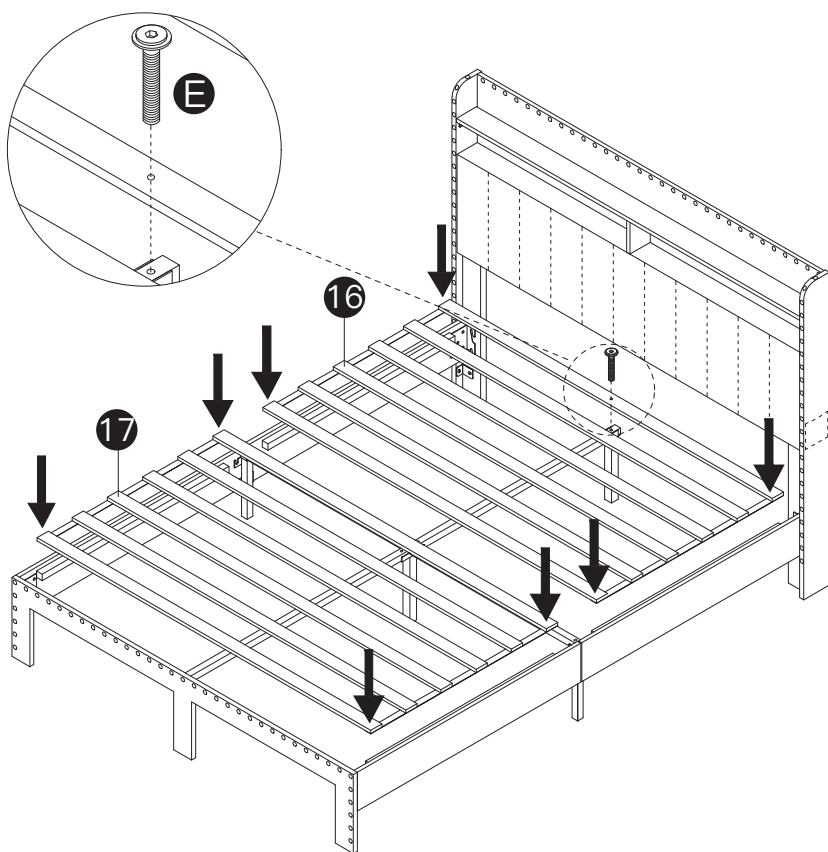
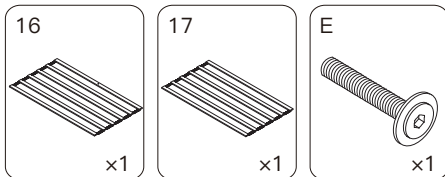
Step 16

Connect part 10 and part 14 with part 23, use part D and part E to screw them.



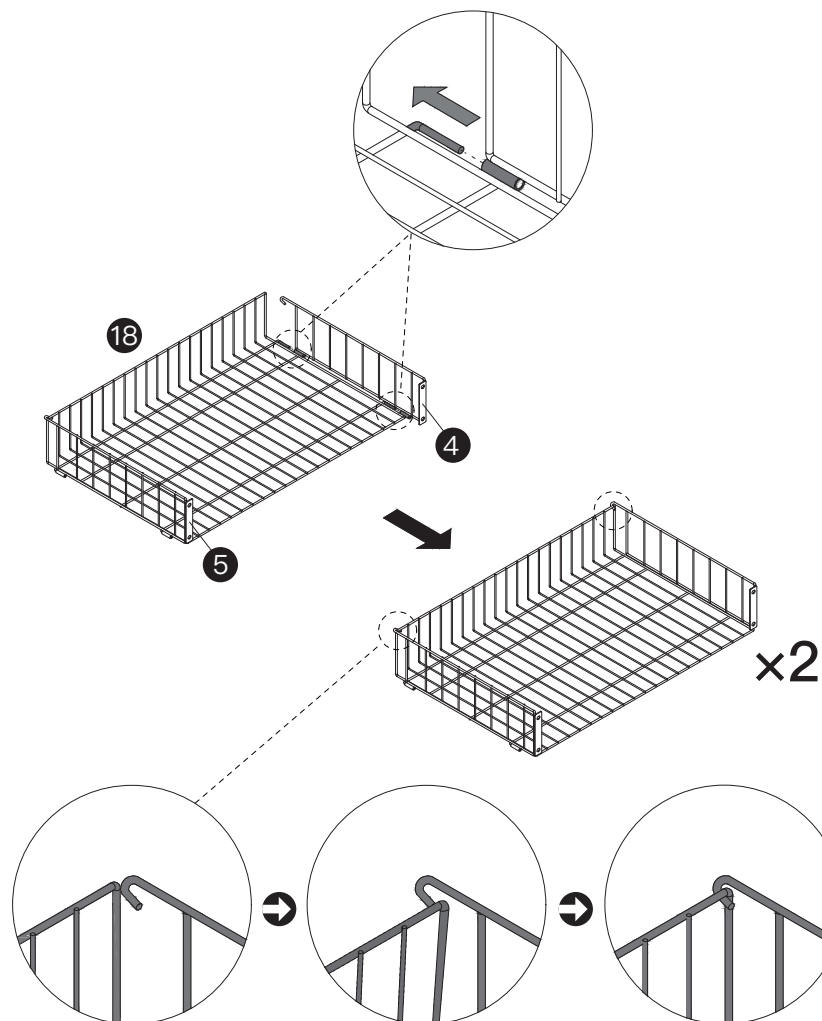
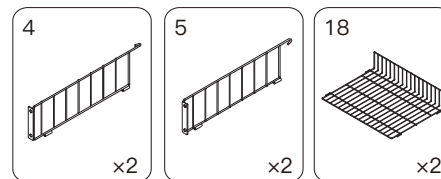
Step 17

Install part 16 and part 17 on the frame, align and fix the Verclo, use part E to tighten part 16.



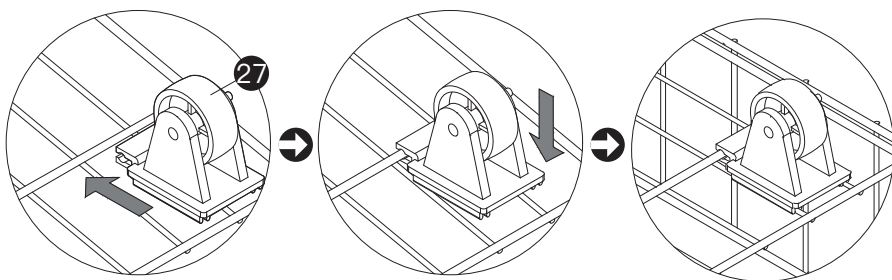
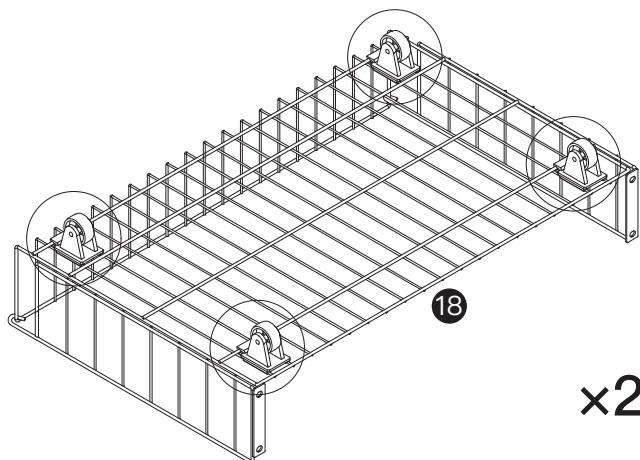
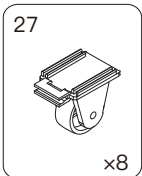
Step 18

Install part 4 and part 5 on part 18.

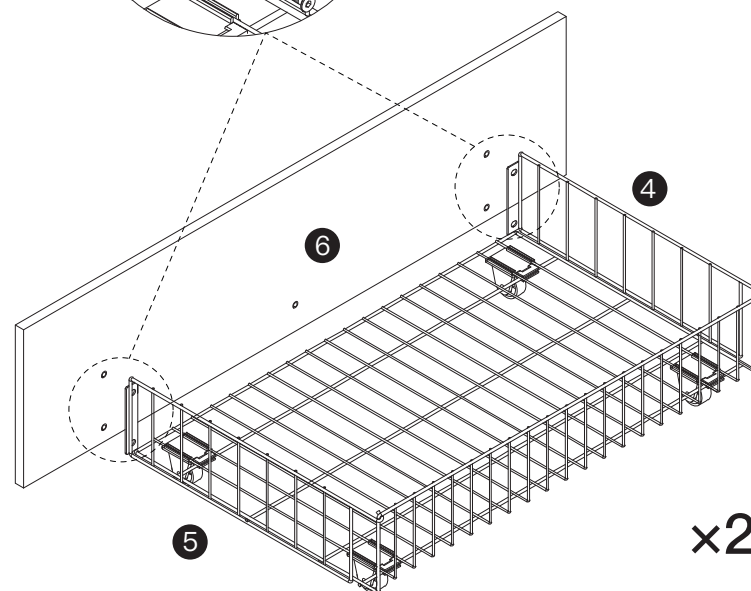
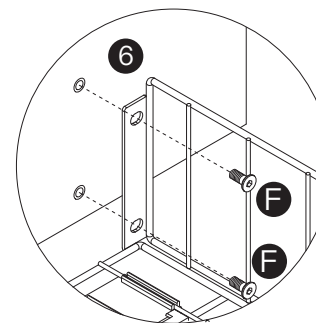
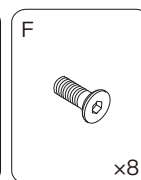
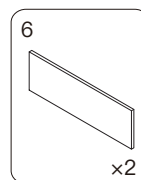


Note: Bend the frame to connect each other when necessary.

Step 19 Flip over and install part 27 on part 18 .

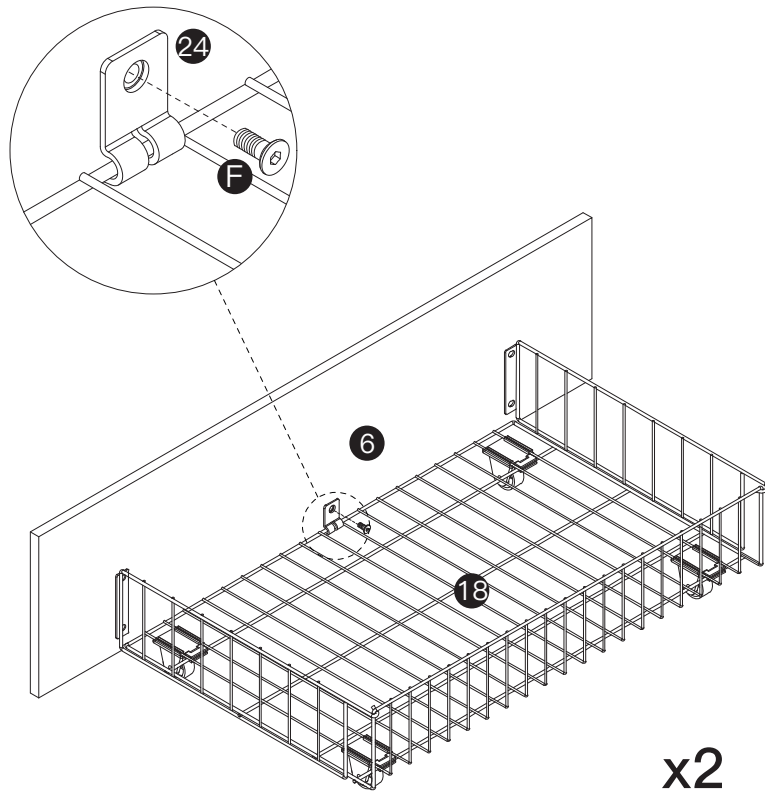
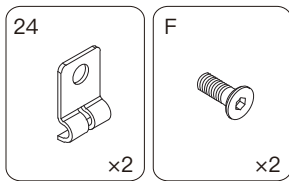


Step 20 Install the front panel (part 6), use part F to screw them.



Step 21

Connect the front panel and drawer frame with part 24, use part F to screw them.



Step 22

Put all drawers in to complete.

