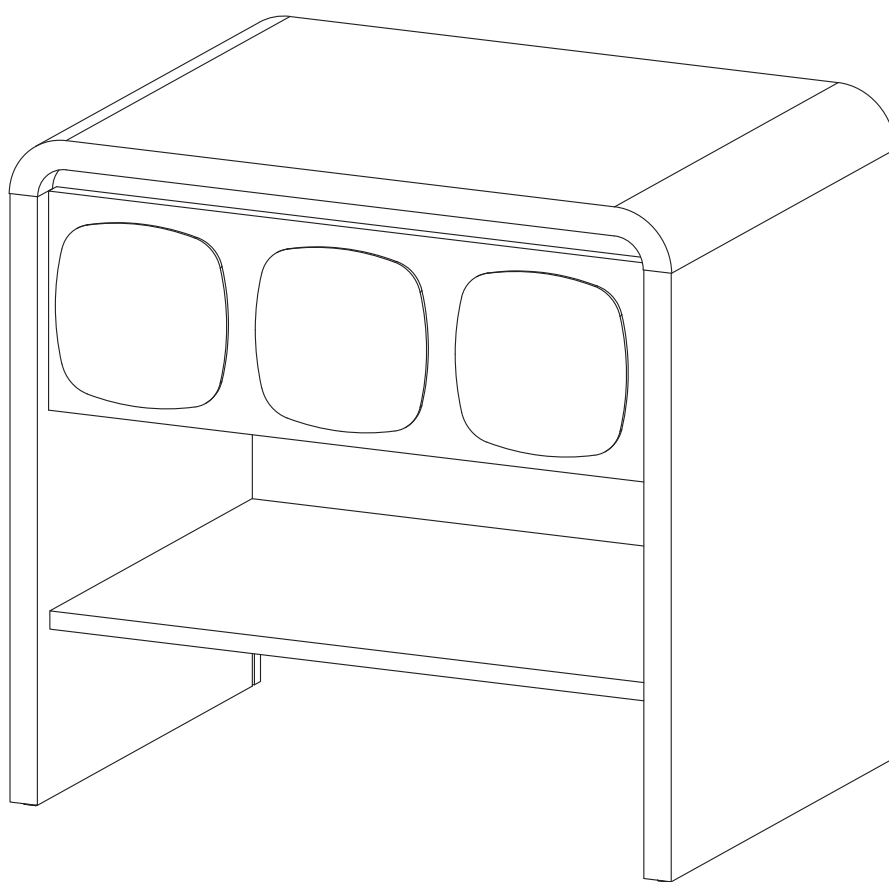


# ASSEMBLY INSTRUCTIONS

# MOD-7160

VO.01.04.24



**Questions? Contact us!**

609.256.9000 • [cs@modway.com](mailto:cs@modway.com)  
[www.modway.com](http://www.modway.com)

**\*modway**



Read through all of the instructions before starting



Care instructions are listed in the last step of this manual



Approx. 45 minutes assembly time



Make sure you have all parts and components before discarding any packing materials



1 people recommended for assembly

**Only use hand tools to assemble this item.** Do not use power tools. Do not tighten bolts or screws completely until all hardware is lined up and inserted into the holes.

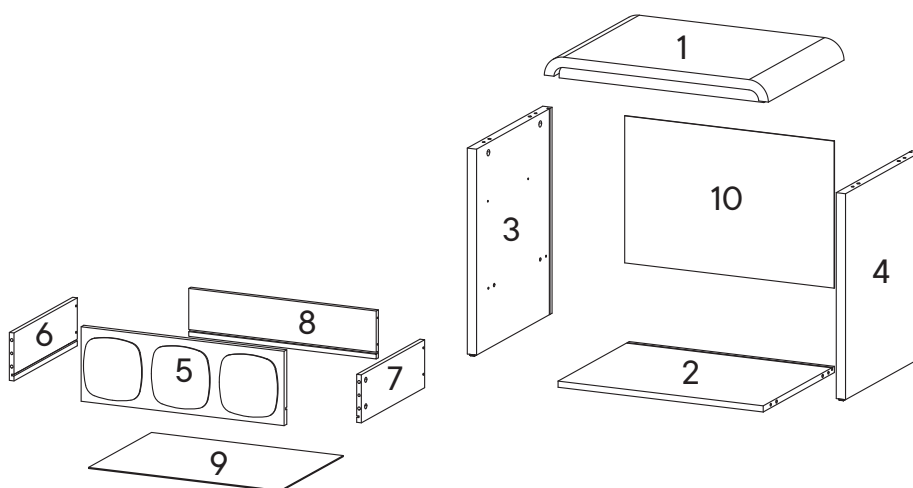
Do not over-tighten screws and bolts to avoid stripping the hardware or cracking the item.

Assemble your item on a flat, carpeted area, with plenty of space to work. This will prevent damage and scratches to your floors or the item while you're assembling the product.

Keep all components and packaging out of reach of children or animals to avoid risk of choking or suffocation.

## Furniture components:

1	Top Board	x1
2	Bottom Board	x1
3	Side Board Left	x1
4	Side Board Right	x1
5	Front Drawer	x1
6	Side Drawer Left	x1
7	Side Drawer Right	x1
8	Back Drawer	x1
9	Bottom Drawer	x1
10	Back Board	x1



## Provided hardware:

A		Cam Bolt Ø6 x 35 mm	x12
B		Cam Lock Ø15 mm	x8
C		Cam Lock Ø12 mm	x4
D		Wood Dowel Ø8 x 30 mm	x8
E		Wood Dowel Ø6 x 30 mm	x2
F		Screw M 8 x 39 mm	x4
G		Screw M 6 x 10.5 mm	x4
H		Screw M 3.5 x 13 mm	x6
I		Floor Glide	x4

J		Screw M 3.5 x 15.5 mm	x8
K		Wedge	x8
RM35A		Drawer Runner	x1

## What you need:

**Phillips Head Screwdriver**

Wait!

**Missing parts or hardware? Need assistance?**  
Contact us before returning your item. We're here to help!  
609.256.9000 • cs@modway.com

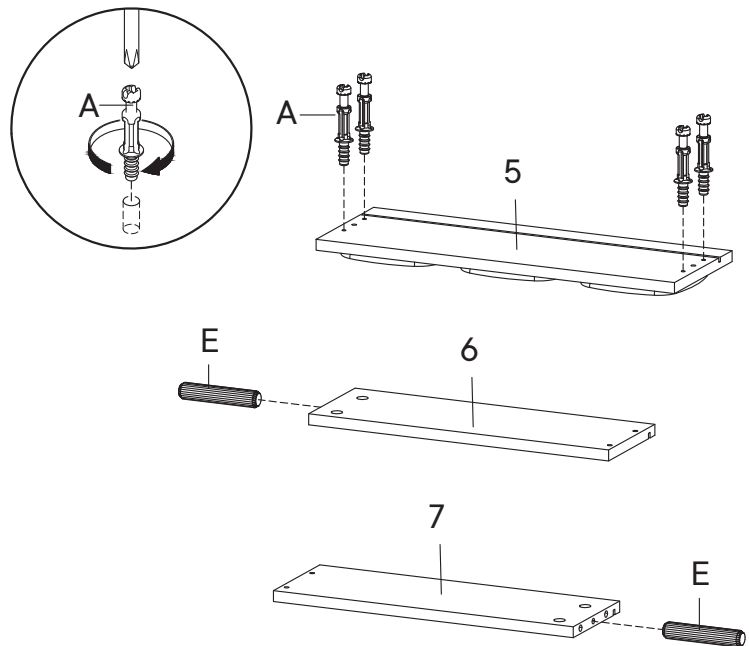
# Step 1

## HARDWARE

- A** Cam Bolt Ø6 x 35 mm x4
- E** Wood Dowel Ø6 x 30 mm x2

## COMPONENTS

- 5** Front Drawer x1
- 6** Side Drawer Left x1
- 7** Side Drawer Right x1



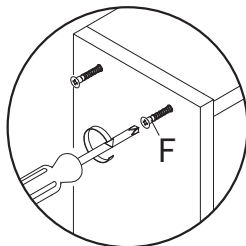
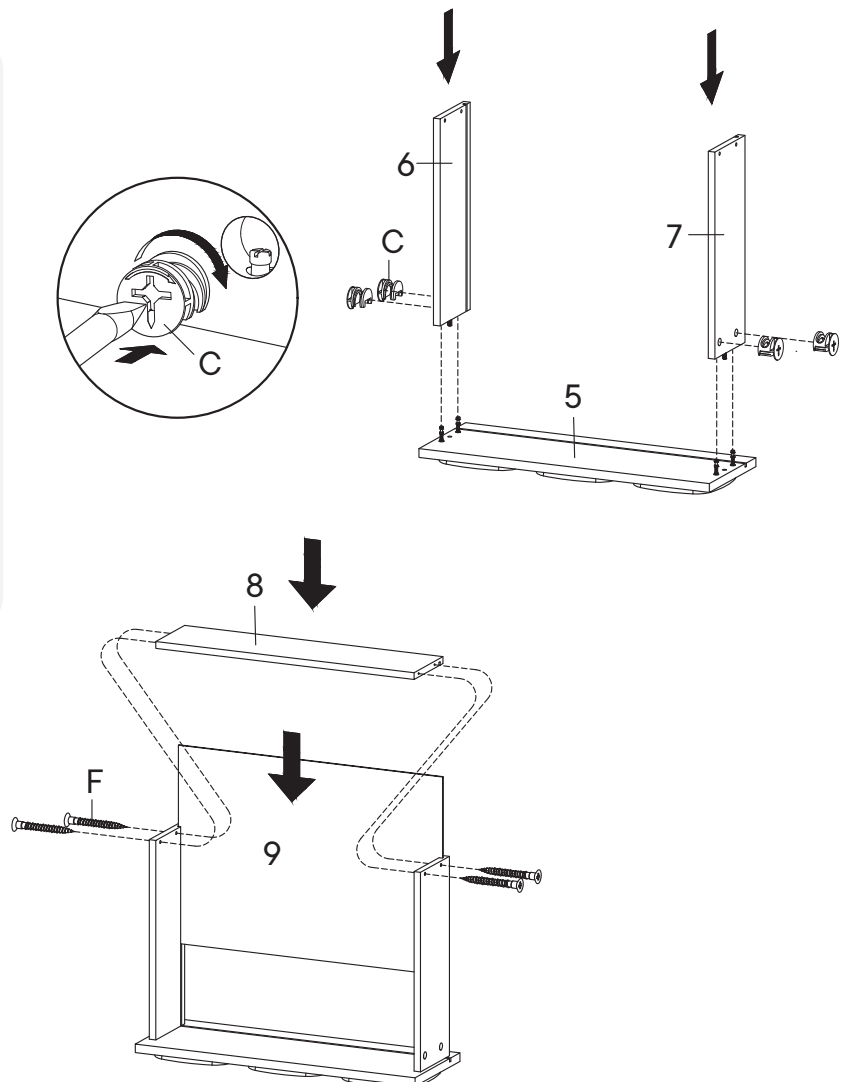
# Step 2

## HARDWARE

- C** Cam Lock Ø12 mm x4
- F** Screw M 8 x 39 mm x4

## COMPONENTS

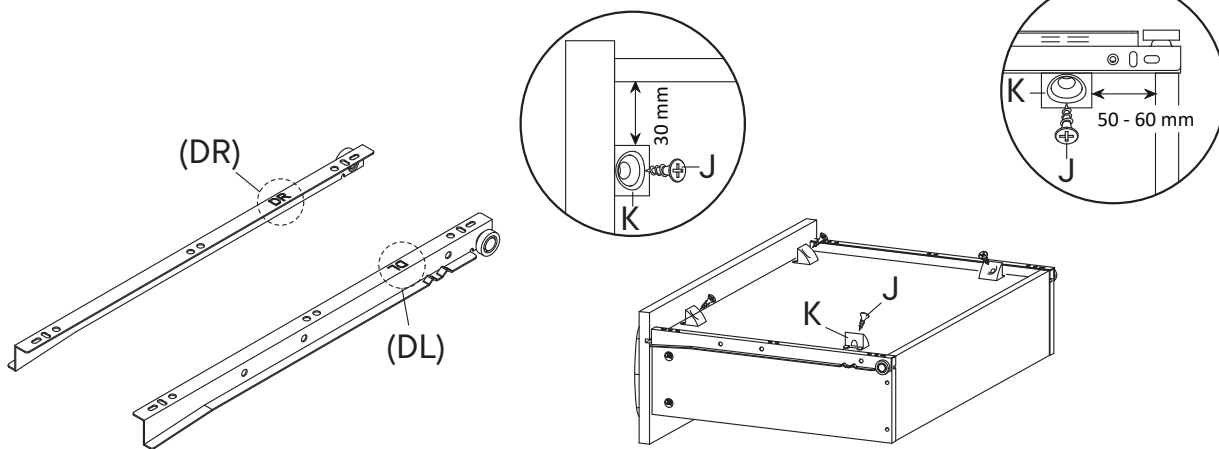
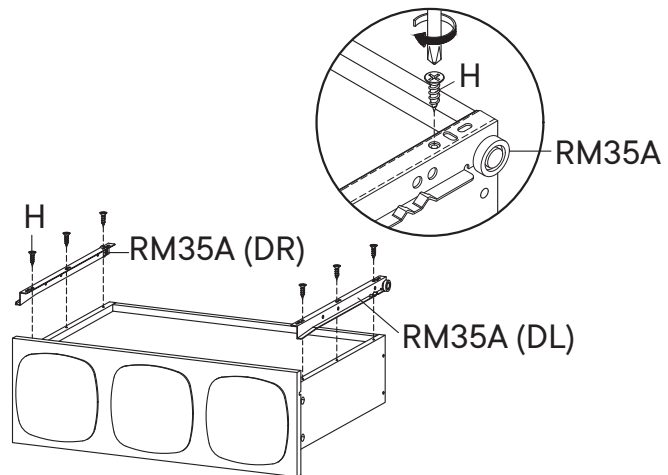
- 5** Front Drawer x1
- 6** Side Drawer Left x1
- 7** Side Drawer Right x1
- 8** Back Drawer x1
- 9** Bottom Drawer x1



## Step 3

### HARDWARE

<b>H</b>	Screw M 3.5 x 13 mm	x6
<b>J</b>	Screw M 3.5 x 15.5 mm	x4
<b>K</b>	Wedge	x4
<b>RM35A</b>	Drawer Runner	x1



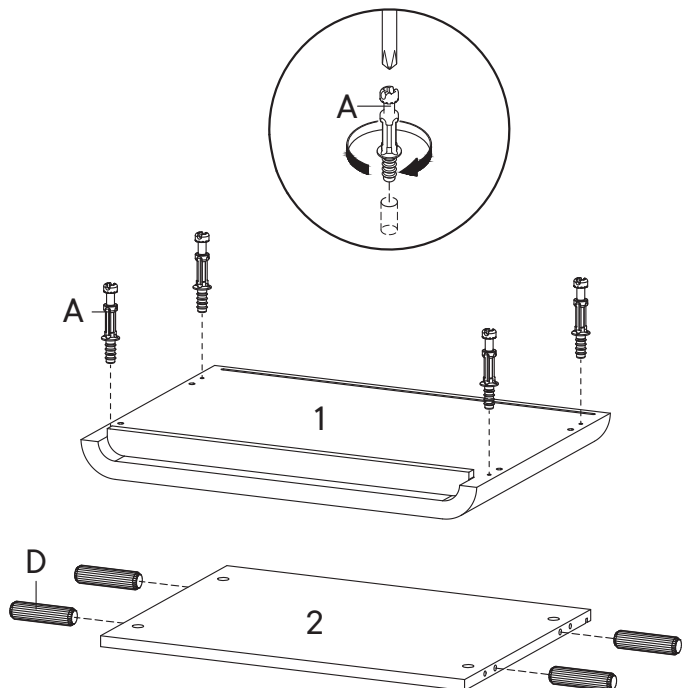
## Step 4

### HARDWARE

<b>A</b>	Cam Bolt Ø6 x 35 mm	x4
<b>D</b>	Wood Dowel Ø8 x 30 mm	x4

### COMPONENTS

<b>1</b>	Top Board	x1
<b>2</b>	Bottom Board	x1



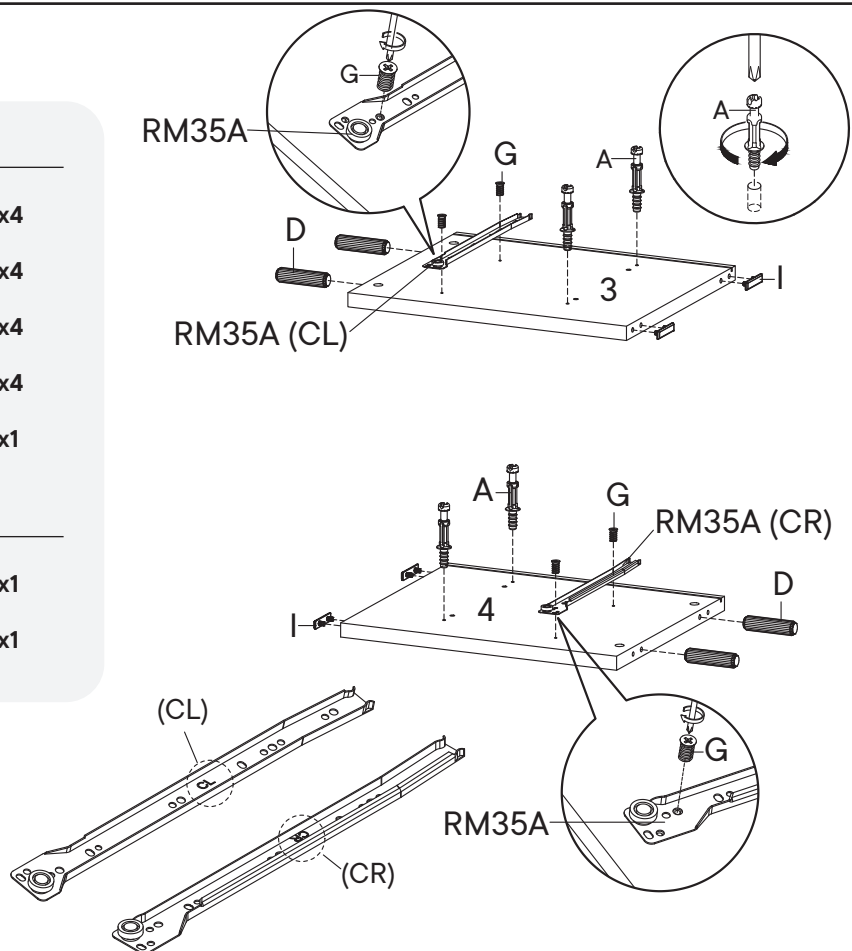
## Step 5

### HARDWARE

<b>A</b>	Cam Bolt Ø6 x 35 mm	x4
<b>D</b>	Wood Dowel Ø8 x 30 mm	x4
<b>G</b>	Screw M 6 x 10.5 mm	x4
<b>I</b>	Floor Glide	x4
<b>RM35A</b>	Drawer Runner	x1

### COMPONENTS

<b>3</b>	Side Board Left	x1
<b>4</b>	Side Board Right	x1



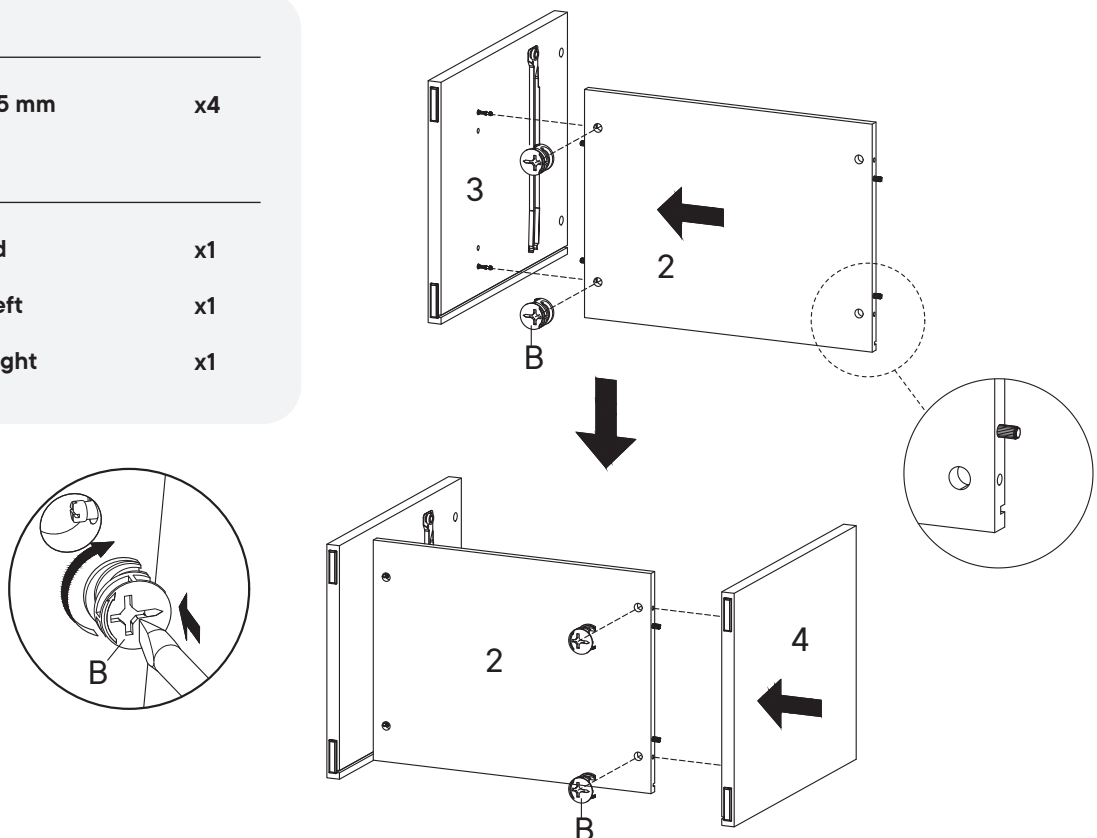
## Step 6

### HARDWARE

<b>B</b>	Cam Lock Ø15 mm	x4
----------	-----------------	----

### COMPONENTS

<b>2</b>	Bottom Board	x1
<b>3</b>	Side Board Left	x1
<b>4</b>	Side Board Right	x1



## Step 7

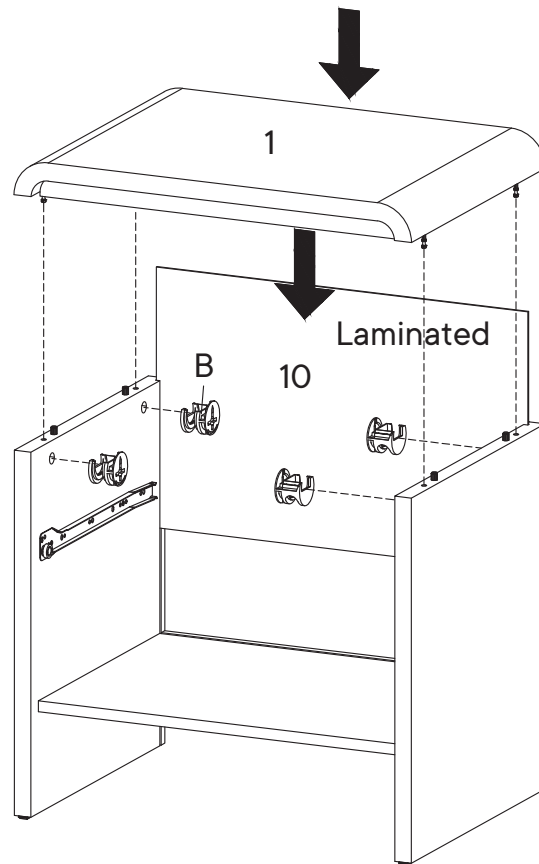
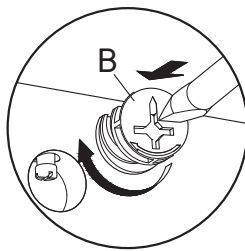
### HARDWARE

**B** Cam Lock Ø15 mm x4

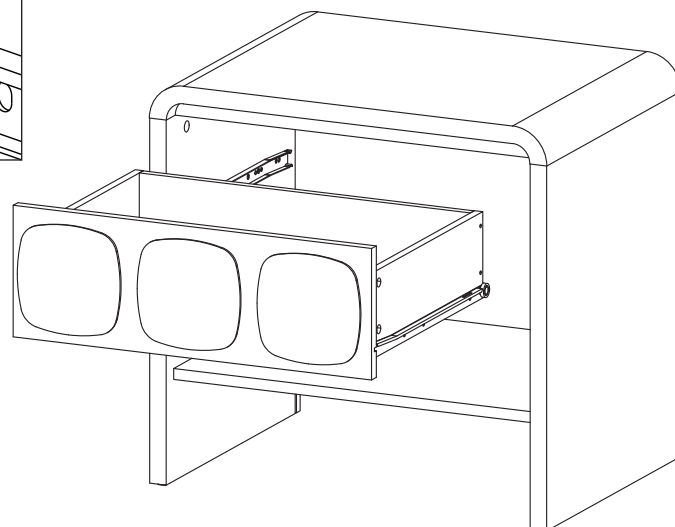
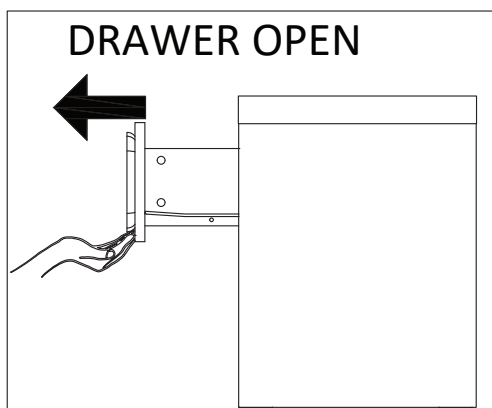
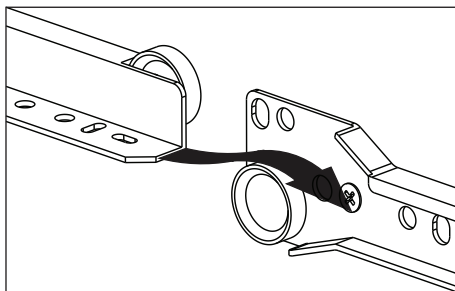
### COMPONENTS

**1** Top Board x1

**10** Back Board x1



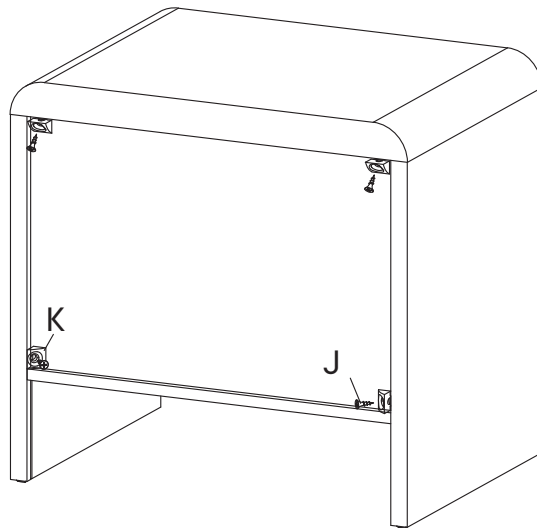
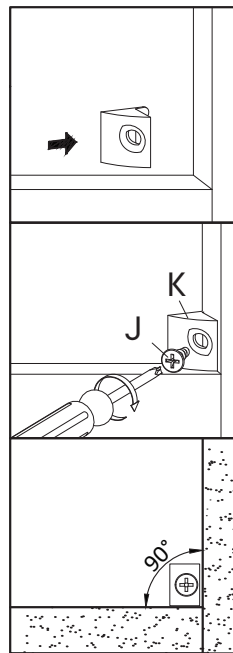
## Step 8



## Step 9

### HARDWARE

- J** Screw M 3.5 x 15.5 mm x4
- K** Wedge x4



## Great job!

Night Stand assembly is complete.

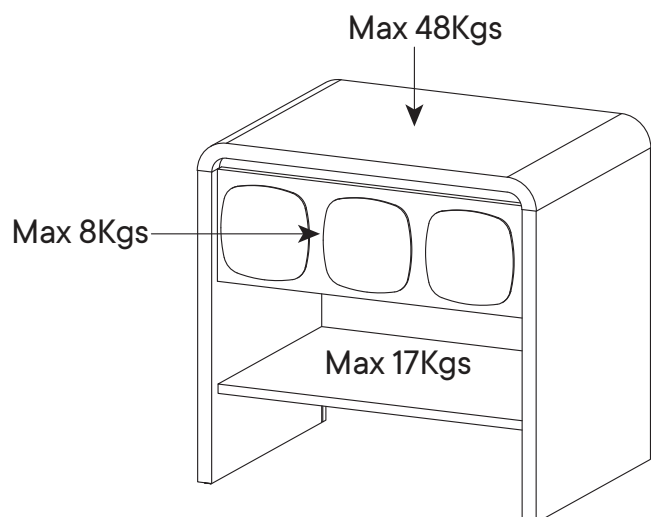
### ♥ CARING FOR YOUR ITEM

Indoor use only.

Not contract grade.

Clean using a non-abrasive cloth and a mild cleaner.

Never use harsh chemicals, as they could damage the finish or integrity of the item.



### CONNECT WITH US!

Tag us @modway\_furniture and #modway for a chance to be featured.