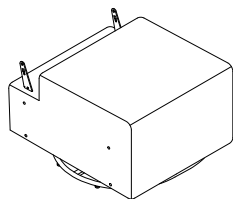


## USE AND MAINTENANCE

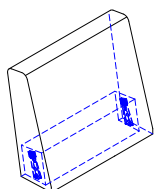
- Use on level surfaces only
- Because this product needs assembly, it is prone to working itself loose from time to time depending on the use. Please take the time to check that all connections are still tight and working properly for safety.
- Only clean using a damp cloth and mild detergent, do not use bleach or abrasive cleaners.

# Swivel Glider

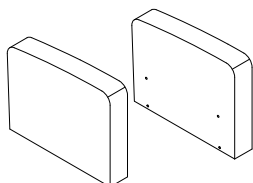
## PART LIST



1 - Seat Base x1

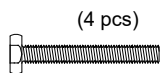


2 - Back Rest x1



3 - Arm Left x1  
4 - Arm Right x1

## HARDWARE



(4 pcs)

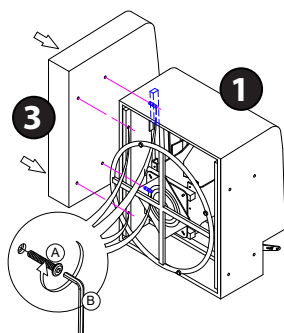
A - Bolts.  
1/4" x 75mm (1/4" x 3")



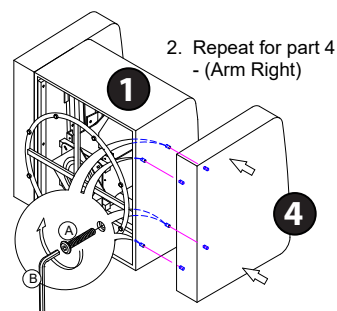
(1 pc)

B - Allen key

## Assembly Instructions



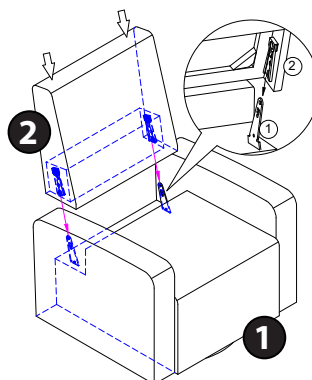
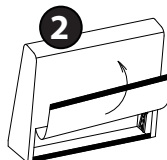
1. Tip the seat base 1 on its back side as shown. Align the holes of left arm 3 with holes in left side of seat base 1. Insert Bolt A into hole in 1 and affix to 3. Use allen key B (included) to tighten.



2. Repeat for part 4 - (Arm Right)

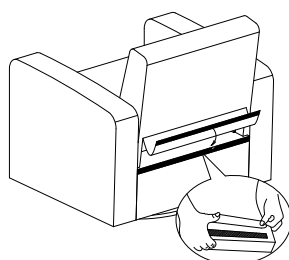
3. Unpack 1 - With Seat Base on its back. Remove any packing straps and materials from underside of Seat Base securing the footrest from opening.

4. Open back fabric

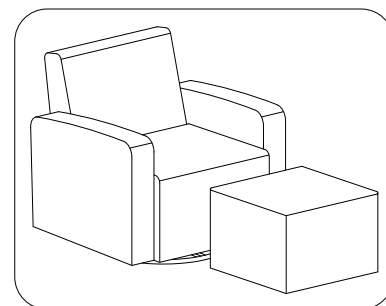


5. Select 1 - Seat Base and 2 - Back Rest. With Back Rest Buttons facing inward, carefully align backrest mounts to seat-base mounts. Insert bottom backrest mounts into Seat Base Mounts until they latch and backrest is secured to seat-base. Exercising Caution, Carefully lift upward on the backrest to confirm backrest is secured.

6. Close the back fabric



7. Congratulations! Setup of your new Swivel Glider is complete!



If you need help or have damaged or missing parts, contact customer service

Made in Vietnam