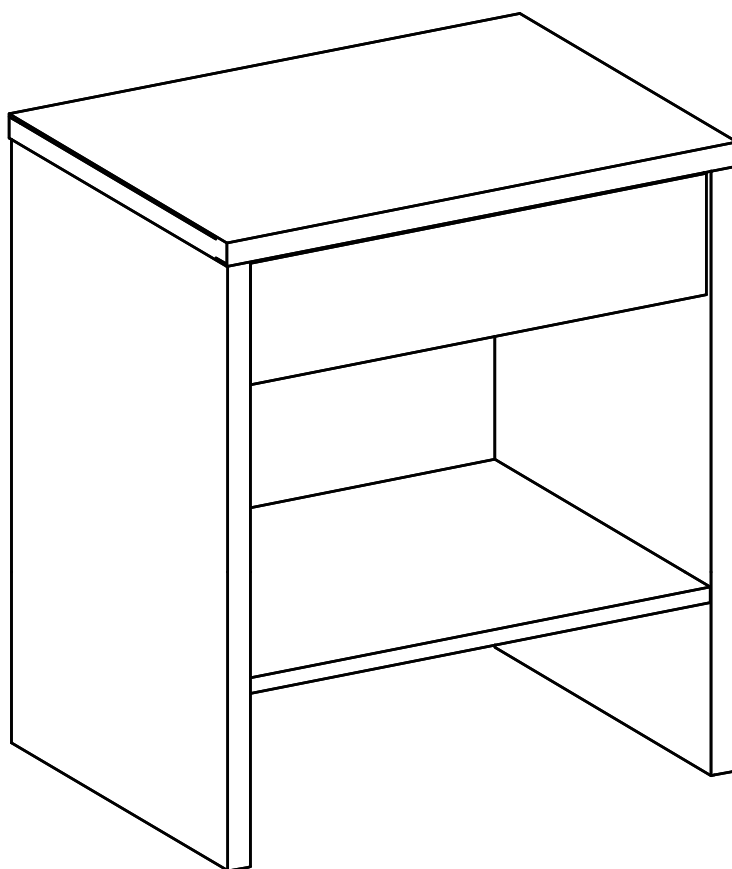


ASSEMBLY INSTRUCTIONS

EEI-6856

V0.01.01.24



Questions? Contact us!

609.256.9000 • cs@modway.com
www.modway.com

***modway**

Let's get started!

***modway**



Read through all of the instructions before starting



Care instructions are listed in the last step of this manual



Approx. 45 minutes assembly time



Make sure you have all parts and components before discarding any packing materials



2 people recommended for assembly

Only use hand tools to assemble this item. Do not use power tools.

Do not tighten bolts or screws completely until all hardware is lined up and inserted into the holes.

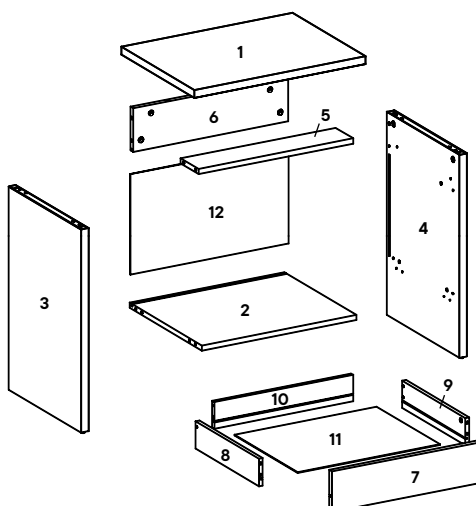
Do not over-tighten screws and bolts to avoid stripping the hardware or cracking the item.

Assemble your item on a flat, carpeted area, with plenty of space to work. This will prevent damage and scratches to your floors or the item while you're assembling the product.

Keep all components and packaging out of reach of children or animals to avoid risk of choking or suffocation.

Furniture components:

1	Top Board	x1	9	Right Drawer	x1
2	Bottom Board	x1	10	Rear Drawer	x1
3	Left Board	x1	11	Bottom Drawer	x1
4	Right Board	x1	12	Backboard	x1
5	Drawer Support	x1			
6	Rear Board	x1			
7	Front Drawer	x1			
8	Left Drawer	x1			



Provided hardware:

A		Cam Lock Ø15 mm	x14
B		Cam Bolt Ø7.5 x 32 mm	x16
C		Cam Cover Ø17 mm	x10
D		Plastic Dowel M8 x 32 mm	x14
E		Screw M6 x 8 mm	x4
F		Screw M6 x 13 mm	x4
G		Screw M10 x 33.5 mm	x2
H		Drawer Rail	x1
I		Cam Lock Ø12 mm	x2

J		Plastic Dowel M6 x 30 mm	x4
K		Cam Cover Ø15 mm	x2
L		L Plate	x4
M		Screw M4 x 10 mm	x16
N		Backply Stopper	x10
O		Screw M4 x 19 mm	x10

What you need:



Phillips

Wait!

Missing parts or hardware? Need assistance?

Contact us before returning your item. We're here to help!

609.256.9000 • cs@modway.com

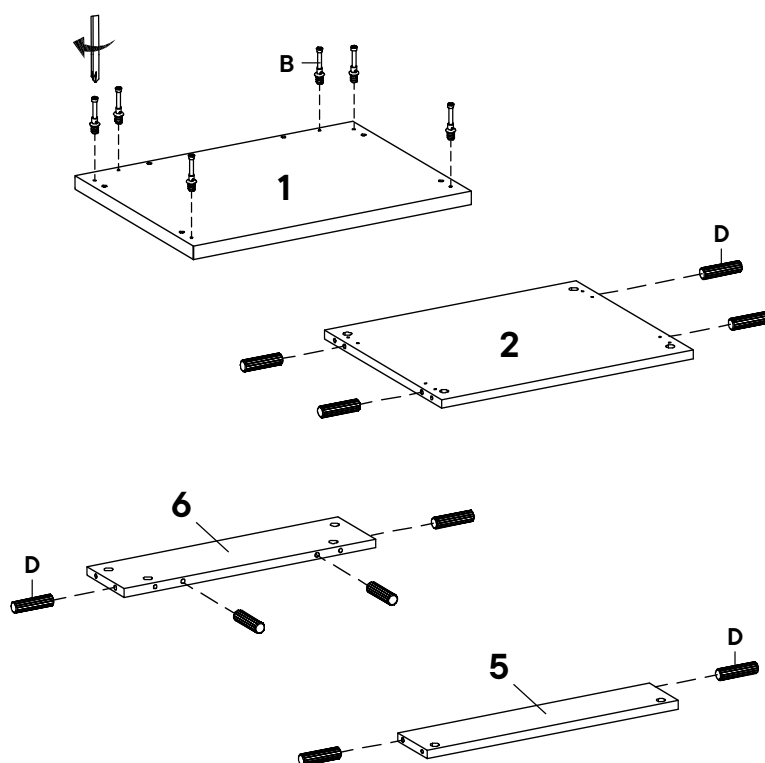
Step 1

HARDWARE

- B** Cam Bolt Ø7.5 x 32 mm x6
- D** Plastic Dowel M8 x 32 mm x10

COMPONENTS

- 1** Top Board x1
- 2** Bottom Board x1
- 5** Drawer Support x1
- 6** Rear Board x1



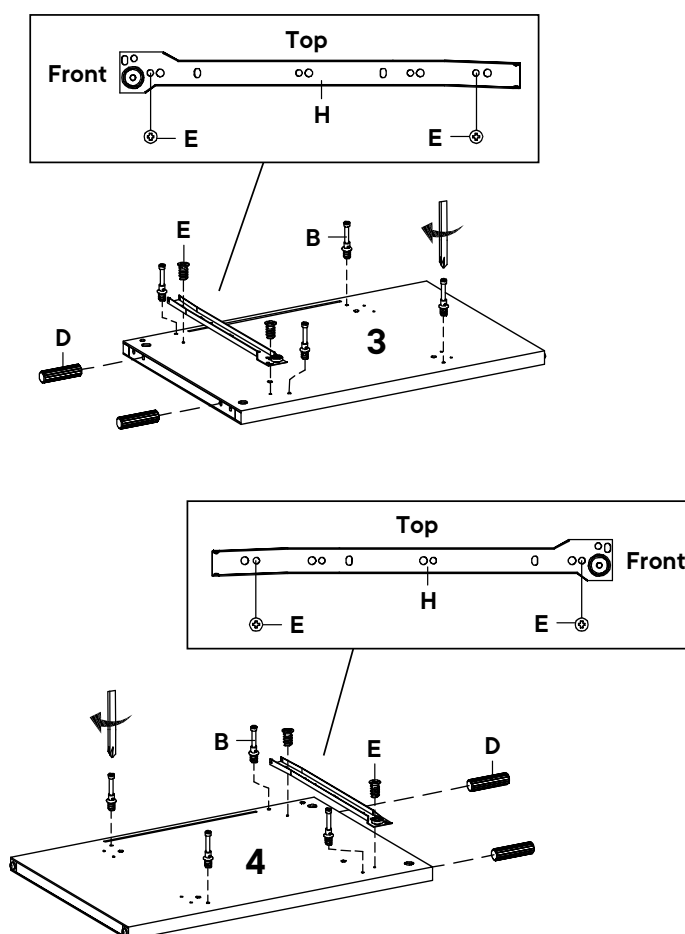
Step 2

HARDWARE

- B** Cam Bolt Ø7.5 x 32 mm x8
- D** Plastic Dowel M8 x 32 mm x4
- E** Screw M6 x 8 mm x4
- H** Drawer Rail x1

COMPONENTS

- 3** Left Board x1
- 4** Right Board x1



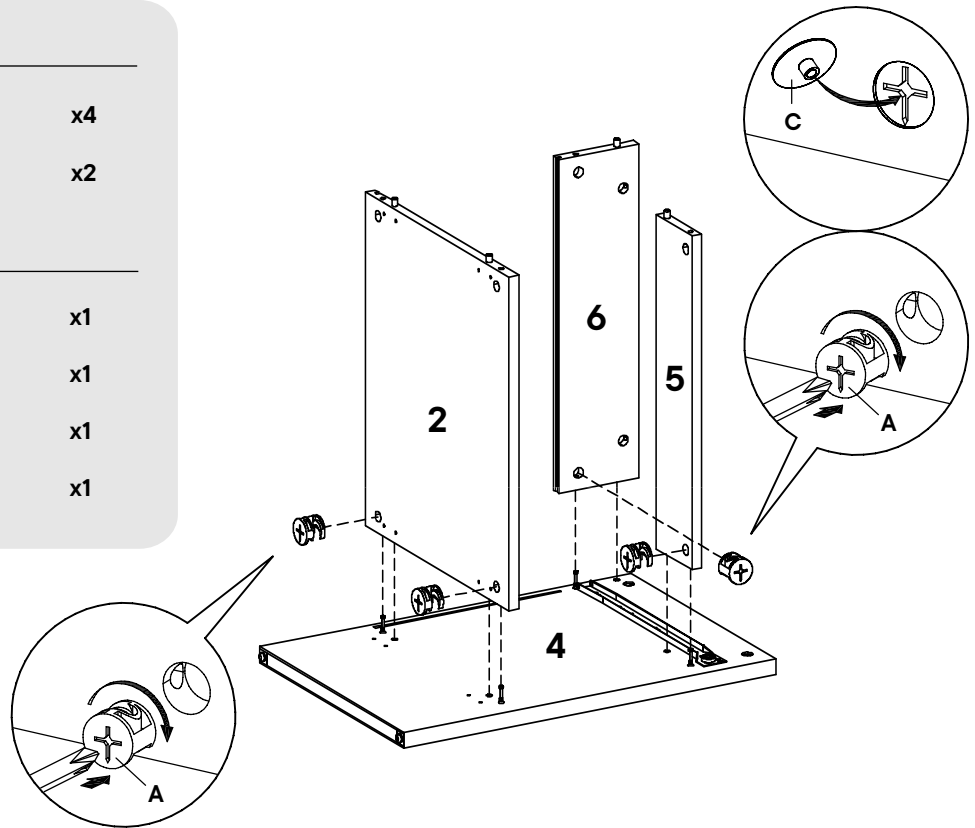
Step 3

HARDWARE

A	Cam Lock Ø15 mm	x4
C	Cam Cover Ø17 mm	x2

COMPONENTS

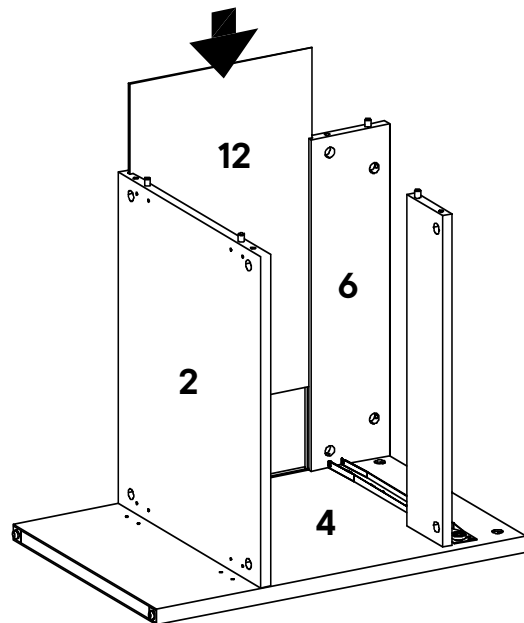
2	Bottom Board	x1
4	Right Board	x1
5	Drawer Support	x1
6	Rear Board	x1



Step 4

COMPONENTS

2	Bottom Board	x1
4	Right Board	x1
6	Rear Board	x1
12	Backboard	x1



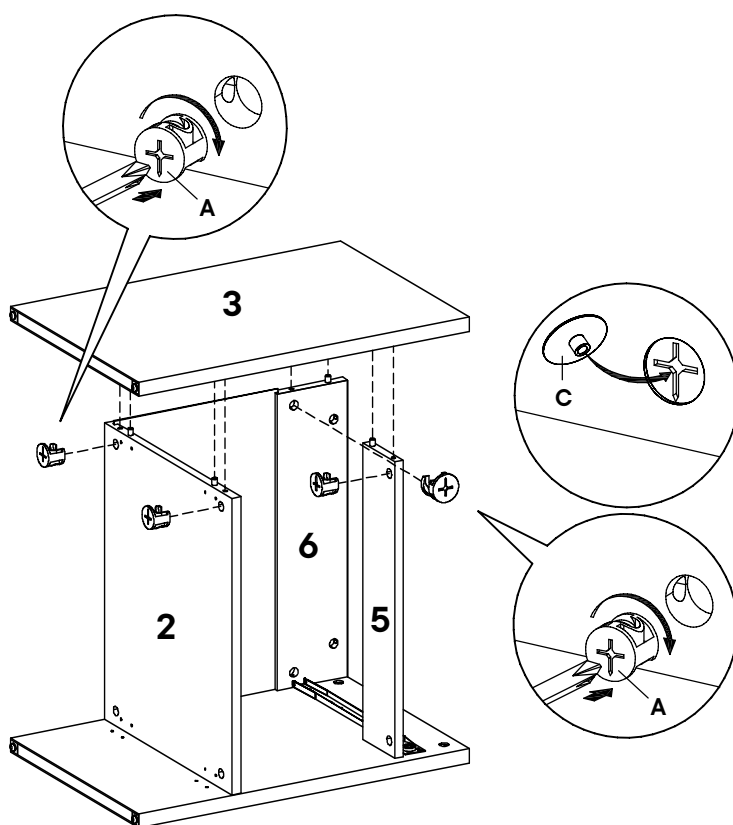
Step 5

HARDWARE

A	Cam Lock Ø15 mm	x4
C	Cam Cover Ø17 mm	x2

COMPONENTS

2	Bottom Board	x1
3	Left Board	x1
5	Drawer Support	x1
6	Rear Board	x1



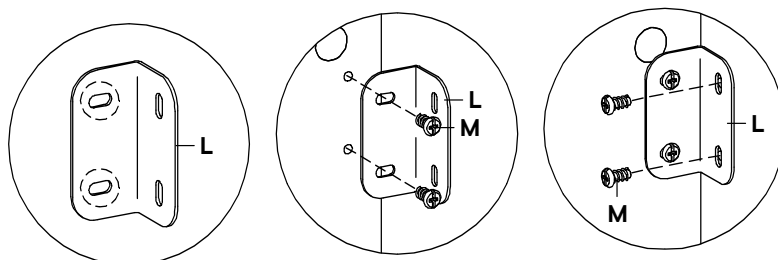
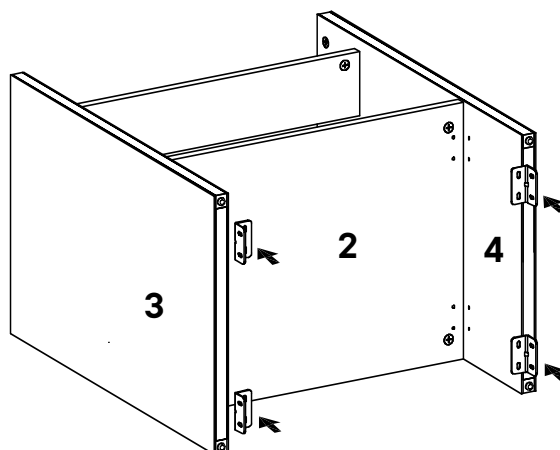
Step 6

HARDWARE

L	L Plate	x4
M	Screw M4 x 10 mm	x16

COMPONENTS

2	Bottom Board	x1
3	Left board	x1
4	Right board	x1



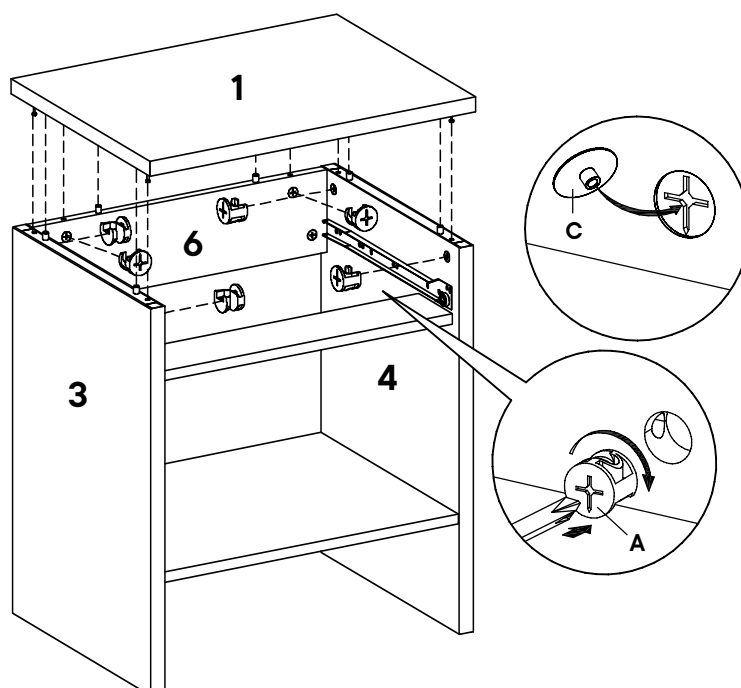
Step 7

HARDWARE

A	Cam Lock Ø15 mm	x6
C	Cam Cover Ø17 mm	x6

COMPONENTS

1	Top Board	x1
3	Left Board	x1
4	Right Board	x1
6	Rear Board	x1



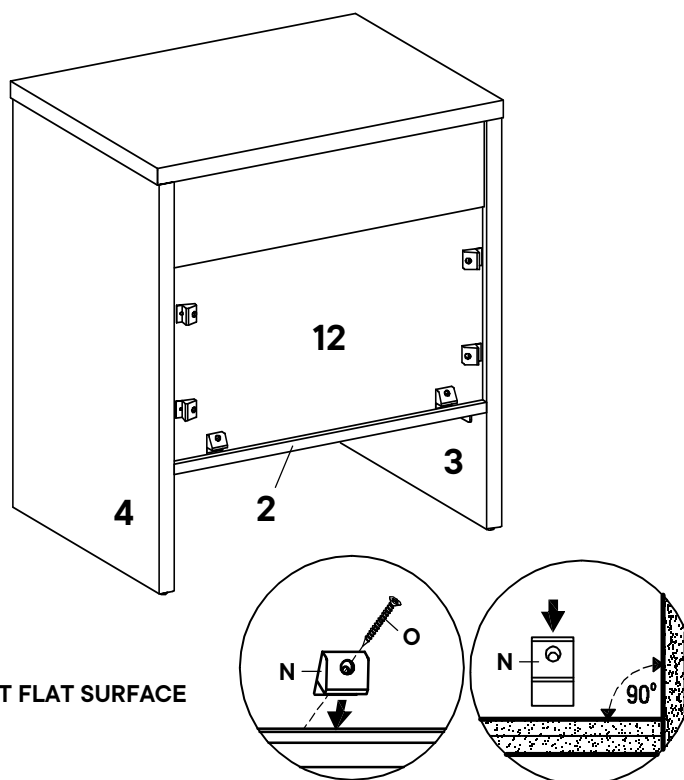
Step 8

HARDWARE

N	Backply Stopper	x6
O	Screw M4 x 19 mm	x6

COMPONENTS

2	Bottom Board	x1
3	Left Board	x1
4	Right Board	x1
12	Backboard	x1



MUST INSTALLED BACKBOARD AT FLAT SURFACE

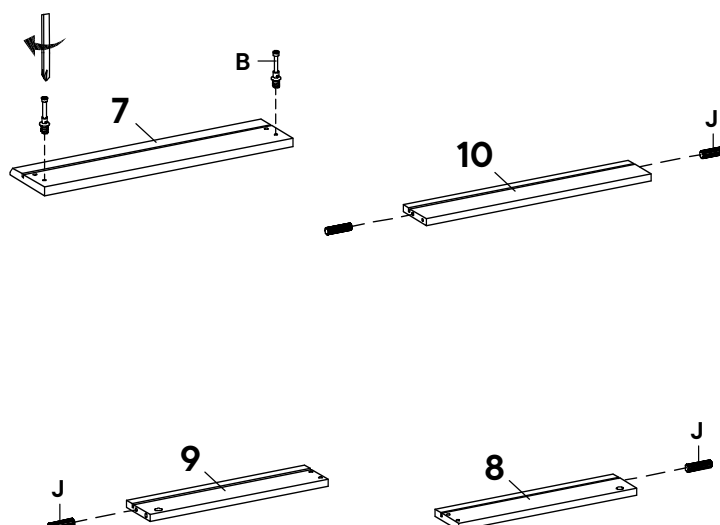
Step 9

HARDWARE

- | | | |
|----------|--------------------------|----|
| B | Cam Bolt Ø7.5 x 32 mm | x2 |
| J | Plastic Dowel M6 x 30 mm | x4 |

COMPONENTS

- | | | |
|-----------|--------------|----|
| 7 | Front Drawer | x1 |
| 8 | Left Drawer | x1 |
| 9 | Right Drawer | x1 |
| 10 | Rear Drawer | x1 |



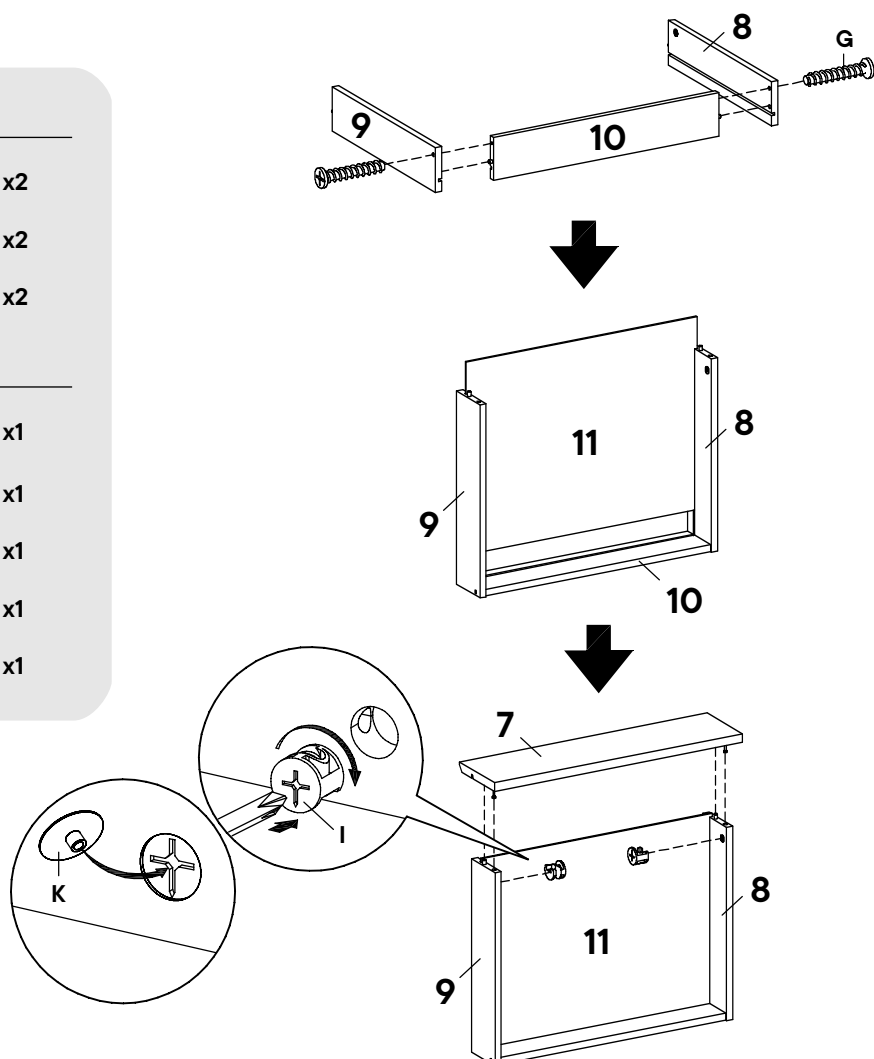
Step 10

HARDWARE

- | | | |
|----------|---------------------|----|
| G | Screw M10 x 33.5 mm | x2 |
| I | Cam Lock Ø12 mm | x2 |
| K | Cam Cover Ø15 mm | x2 |

COMPONENTS

- | | | |
|-----------|---------------|----|
| 7 | Front Drawer | x1 |
| 8 | Left Drawer | x1 |
| 9 | Right Drawer | x1 |
| 10 | Rear Drawer | x1 |
| 11 | Bottom Drawer | x1 |



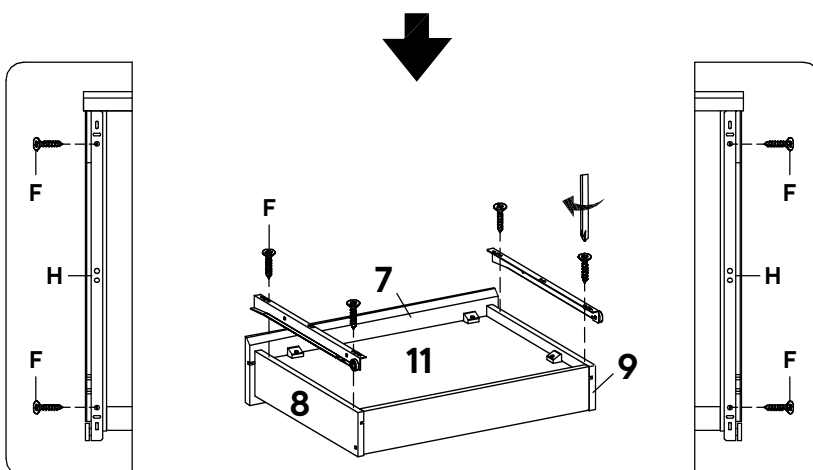
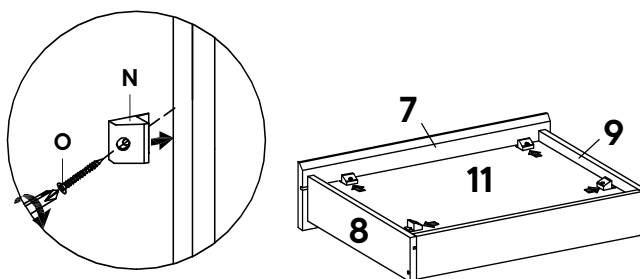
Step 11

HARDWARE

F	Screw M6 x13 mm	x4
H	Drawer Rail	x1
N	Backply Stopper	x4
O	Screw M4 x19 mm	x4

COMPONENTS

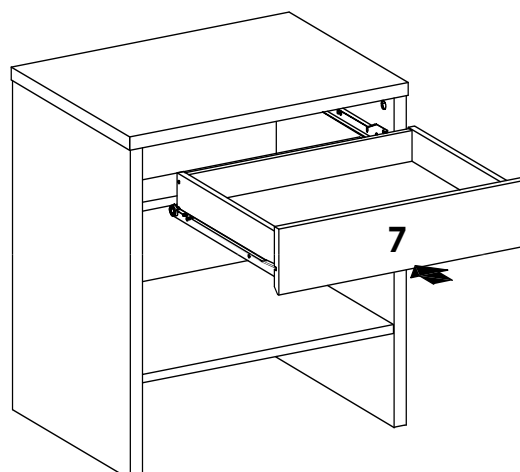
7	Front Drawer	x1
8	Left Drawer	x1
9	Right Drawer	x1
11	Bottom Drawer	x1



Step 12

COMPONENTS

7	Front Drawer	x1
----------	--------------	----



Great job!

Nightstand assembly is complete.



CARING FOR YOUR ITEM

Indoor use only.

Not contract grade.

Clean using a non-abrasive cloth and a mild cleaner.

Never use harsh chemicals, as they could damage the finish or integrity of the item.

CONNECT WITH US!



Tag us @modway_furniture and #modway for a chance to be featured.

