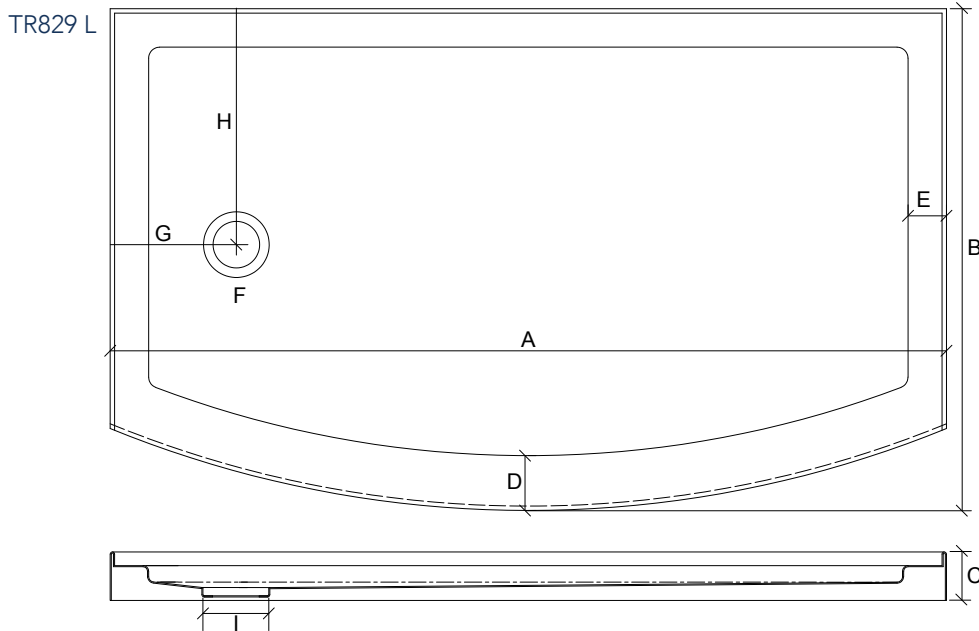


TR 829 - 60" - Acrylic Shower Tray

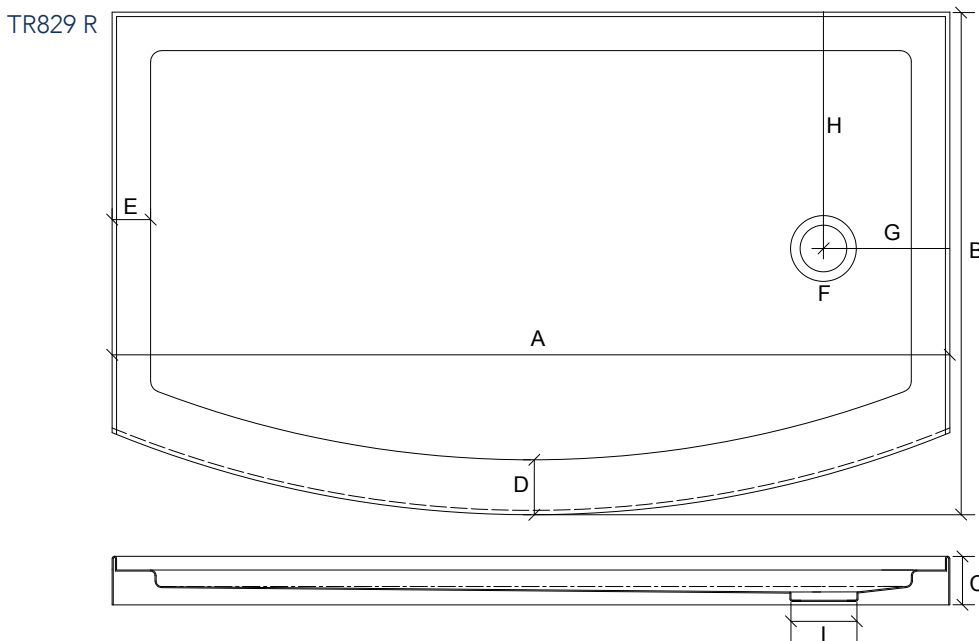


TR829-L\R 60x36 door – 3-wall alcove install:

The Aston TR829 comes ready for installation with standard features such as 3-side integral tile flanges, a water barrier to eliminate water escaping during showering, a textured slip-resistant floor and choice of left or right drain placement. For use with:

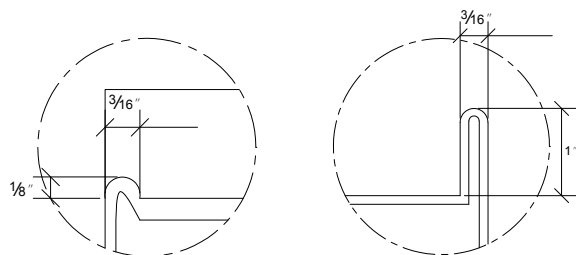
Model Name Product#
Aston ZenArch SDR981-60

- Shower base dimensions: 60" L x 36" W x 2 1/2" H
- Curved bowfront design
- Color/Finish: White
- High quality scratch and stain resistant acrylic
- Water barrier to eliminate water escaping from the shower
- Slip-resistant textured floor for safety
- 3-sided integral tile flange for easy installation and waterproofing
- Structural reinforcement for durability
- 3-wall alcove installation
- cUPC Certified
- Available with Left or Right drain configuration
- Drain is not included



Water Barrier

Tile Flange



| MODEL | LENGTH (A) | WIDTH (B) | HEIGHT (C) | THRESHOLD WIDTH (D) | DECK WIDTH (E) | DRAIN LOCATION (F) | DRAIN TO WALL LENGTH (G) | DRAIN TO WALL WIDTH (H) | DRAIN DIAMETER (I) |
|---------|------------|-----------|------------|---------------------|----------------|--------------------|--------------------------|-------------------------|--------------------|
| TR829 L | 60" | 36" | 2 1/2" | 4" | 2 3/4" | Left | 9 1/16" | 16 15/16" | 3 3/8" |
| TR829 R | 60" | 36" | 2 1/2" | 4" | 2 3/4" | Right | 9 1/16" | 16 15/16" | 3 3/8" |