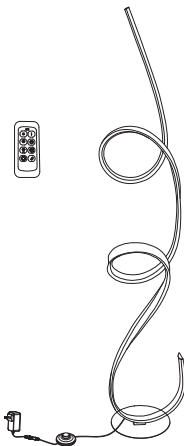


edishinē

Floor Lamp

Model: TF0514

[Instruction Manual]

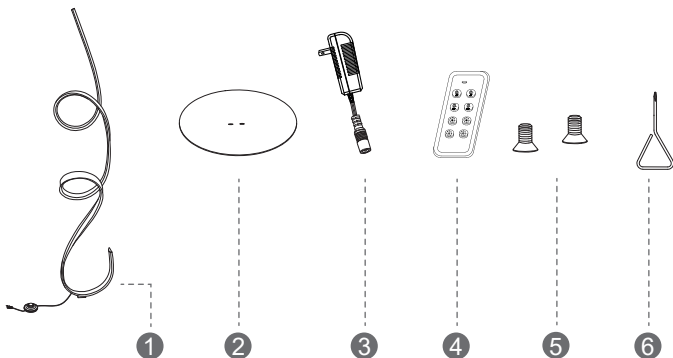


Thank you for your purchase.
Please contact us if you have any questions,
and we will get back to you within 24 hours.
Please attach your Order ID so that
we can serve you better.

CAUTION

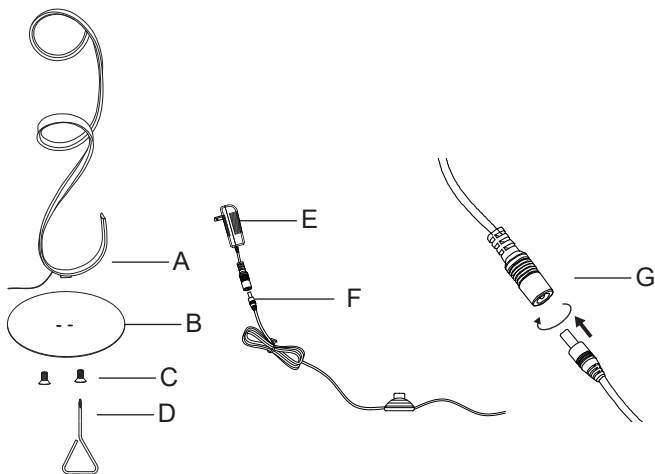
1. Before assembly, place all parts out on a clean flat surface and inspect each part for defects that may have occurred during shipping.
2. Inspect wire insulation for any cuts, abrasions or exposed copper that may have resulted during shipping. If there are any defects in the wire, DO NOT continue to assemble. Please send an email to our Customer Service immediately.
3. Consult a qualified electrician if you have any electrical questions.
4. Never drape clothes over the lamp.
5. To reduce the likelihood of tipping over, we recommend placing the lamp behind furniture and keep children and pets away.
6. To prevent children from suffocating and choking, keep them away from packing materials.
7. Please keep this manual and hand it over when you transfer the product.

Packing List



Part	Description	Quantity
1	Floor Lamp	1
2	Base	1
3	Adapter	1
4	Remote Control	1
5	screw	2
6	screwdriver	1

ASSEMBLY INSTRUCTIONS



- 1.Screw the screws (C) by screwdriver (D) to clockwise Floor Lamp (A) onto Base (B) until tight.
- 2.Connect the Adapter connector (F) to the Adapter (E) and then Spin lock(G).
- 3.Place the floor lamp where you need it and plug into the power supply.

FUNCTIONS

Foot Switch

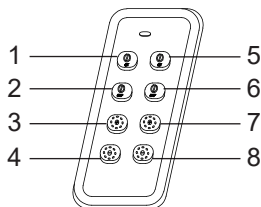
Three color temperatures(2700K/4500K/6000K)

Stepless Dimmable

Press the switch once to turn the light ON; Short press this button in turn to select the color temperature(2700K/4500K/6000K).At last, short press this button to turn off.

After the short press to turn it on, and then Long press the foot switch, the light will gradually to brighten or darken, just moves your foot away when you think the brightness is OK.

Remote Control



- 1.Shutdown button (Long press the shutdown button for 3 seconds until the blue light flashes to unpair the floor lamp and remote control. If necessary, you can re-pair with other remote to control this floor lamp)
- 2.Brightness + (7 levels)
- 3.Brightness - (7 levels)
- 4.3 color temperatures: 2700K/4500K/6000K

5. Power button (Please power on this lamp first, install one 12V 23A battery on the remote control and close to the lamp, and then long press the remote control power button for 3 seconds until the blue light flashes once and the code is successfully matched, then it can be used normally. Or other remote controls which are not paired with this floor lamp cannot control this lamp)
6. Color temperature - (7 levels)
7. Color temperature + (7 levels)
8. Night light mode (Can set CCT to 2700K, 30% brightness)

Memory function: the floor lamp can remember the mode of the brightness and color you settled before closing.

Specifications

- Product Height: 56 IN
- Base Length: 10.2 IN
- Wire Length: 78 IN
- Materials: Iron, PC
- Input Voltage: AC100V-240V 60Hz
- Max. Load Power: 24W
- Color temperature: 2700K/4500K/6000K

Product Care

1. Do not repair disassemble or modify under any circumstances;
2. Do not place near any heat source or heat source or in direct sunlight;
3. Do not place on uneven, unsecured desk or table;
4. Use ONLY the supplied AC power adapter;
5. Do not use the appliance with frayed or damaged electrical cords;
6. Do not touch an electrical appliance with wet hands or when liquids are present;
7. Please keep the lamp and all appliances dry and clean;
8. Unplug the adapter when the lamp is not used;
9. Power off before cleaning;
10. Clean the lamp only with a soft dry cloth;
11. Never overload electrical circuits as it may cause electrical shock or fire;
12. If the remote connection fails, please watch the user manual carefully or contact after-sales customer service, we will reply within 24 hours.

Safety Information

WARNING: This device complies with Part 15 of the FCC Rules. Operation is subject to the following two conditions: (1) This device may not cause harmful interference, and (2) This device must accept any interference received, including interference that may cause undesired operation.

CAUTION: Changes or modifications not expressly approved by the party responsible for compliance could void the user's authority to operate the equipment.

NOTE: This equipment has been tested and found to comply with the limits for a Class B digital device, pursuant to Part 15 of the FCC Rules. These limits are designed to provide reasonable protection against harmful interference in a residential installation. This equipment generates, uses, and can radiate radio frequency energy and, if not installed and used in accordance with the instructions, may cause harmful interference to radio communications. However, there is no guarantee that interference will not occur in a particular installation. If this equipment does cause harmful interference to radio or television reception, which can be determined by

turning the equipment off and on, the user is encouraged to try to correct the interference by one more of the following measures:

- Reorient or relocate the receiving antenna.
- Increase the distance between the equipment and receiver.
- Connect the equipment into an outlet on a circuit different from that to which the receiver is connected.
- Consult the dealer or an experienced radio/TV technician for help.

FCC Radiation Exposure Statement:

This equipment complies with FCC radiation exposure limits set forth for an uncontrolled environment.

One Year Limited Warranty

Supported by our professional R&D team and QC team, we provide One Year Warranty for materials and workmanship from the purchase date.

Please note that the warranty does not cover damage caused by personal misuse or improper installation.

Please attach your Order ID and Name so that our dedicated customer service team can help you better.

