

尺寸，根据包装尺寸设计

封面:

品牌和品牌 logo

**STICK BLENDER SET**

**Model: HB-2081**

产品线稿图 or 实物图

**Instruction manual**

**Please read the instruction manual carefully prior to use**

Contents

English -----01~06 ( 页码按实际排版-居中 )

Deutsch -----

Français -----

Español -----

Italiano -----

**EN:**

## **Introduction**

Thank you for purchasing our product. Please read this instruction manual carefully before using the product and preserve it for long-term reference. The instruction manual contains necessary safety advice and user instructions, follow the instruction manual to operate in order to avoid damaging the product for misuse.

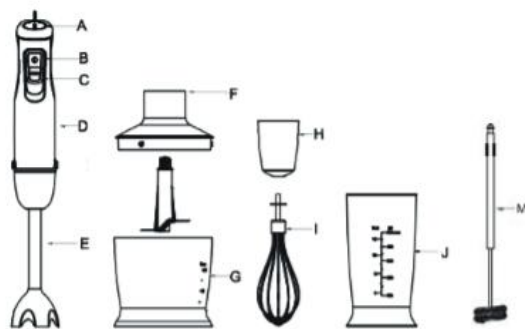
Please check if the package is intact while receiving it, if you find out any damage or missing parts, please contact our official email in time: **support@healthomse.com for the United States and Canada**; and **service@healthomse.com for the European countries**, we will arrange a new one for you immediately.

## **Package Contents**

1 x Immersion Blender

- 1 x 500ML 4 Blades Chopper
- 1 x 700ML Beaker with cover
- 1 x Egg Whisk
- 1 x Milk Frother
- 1 x Instruction Manual

### Product Structure



- A. Inching switch
- B. Switch
- C. Switch turbo
- D. Motor unit
- E. Blender stick
- F. Chopping bowl lid
- G. Chopping bowl
- H. Whisk holder
- I. Whisk
- J. Beaker
- M. Milk Frother

### Specification

Power / Wattage: Max 800W

Material: Stainless Steel, BPA Free

Rated Voltage & Frequency: AC110-120V, 60Hz (for US and CA)

Rated Voltage & Frequency: AC 220 - 240V, 50Hz (for EU Countries )

Net weight: 1.36 kg

Gross weight: 1.56 kg

## **Important Caution**

**\*Please read the instruction manual carefully and completely before using the appliance.**

1. Before plugging into a socket, check whether your voltage corresponds to the rating label of the appliance.
2. Don't plug the appliance into the power supply until it is fully assembled and always unplug before disassembling the appliance or handling the blade.
3. Switch off the appliance and disconnect from supply before changing accessories or approaching parts which move in use.
4. The first mode is for slow rotating, the turbo mode is for fast rotating. Press and hold the switch, the machine will work. Release the switch, the machine will stop.
5. The blades are very sharp! Keep your fingers, hair, clothes, and other objects a distance from the machine when it is still rotating.
6. Never use a damaged appliance. If it has been damaged, please please contact our after-sales email, we will solve your problem well.
7. Please do not put overheating (over 60-degree centigrade) and overmuch food material into a cup to avoid liquid spills, overflow, and resulting in personal injury.
8. Use the appliance for no longer than 1 minute and let the motor cool down at least 1minute. The motion could not be more than 3 cycles. After that the motor needs to be cooled otherwise the inner parts can be damaged.
9. The product will automatically stop working when it overheating, please unplug the power cord plug.
10. Don't let the motor unit, cord, or plug get wet.
11. Don't let excess cord hang over the edge of the table or worktop or touch hot surface.
12. Please use a dry dishcloth to wipe the product body. And it is strictly prohibited to let the main unit rinse with water or immerse in the water.
13. The beaker, chopper, food processing cup, etc. are not microwave-proof.
14. The use of attachments not recommended or sold by the manufacturer may cause personal injury.
15. This appliance should not be used by children. To avoid possible accidental injury, close supervision is necessary when any appliance is used by or near children.
16. This appliance is not intended for use by persons (including children) with reduced physical sensory or mental capabilities, or lack of experience and knowledge unless they have been given supervision or instruction concerning the use of the appliance by a person responsible for their safety.
17. This product contains recyclable materials. Do not dispose of this product as unsorted municipal waste. Please contact your local municipality for the nearest collection point.

## **Parts and Features**

### **A. Speed control switch**

The speed control switch is used to control the rotation speed of switch I, there are 12-speed gears in total.

#### **B. Switch-I**

The switch-I is for slow rotating. Press and hold the switch, the machine will work at the set speed. Release the switch, the machine will stop.

#### **C. Switch-turbo**

The switch-turbo is for fast rotating. Press and hold the switch, the machine will work at a fast speed. Release the switch, the machine will stop.

#### **D. Motor unit**

The main body is not dishwasher safe. The motor and other electrical components are housed here.

#### **E. Detach button**

This button is used to detach the hose and accessories.

#### **F. Detachable Blending Shaft**

Hold the blending shaft with the blades down, and align the top end of the blending shaft with the corresponding end of the main body and push until the blending shaft clicks and locks into the main body. By pressing the release button on the side of the unit, the shaft will detach for easy cleaning.

#### **G. Detachable Whisk Gear**

The whisk attachment attaches to the whisk gear, The whisk gear is not dishwasher safe.

#### **H. Whisk Attachment**

The whisk attachment snaps into the detachable whisk gear, This attachment is great for whipping cream, egg whites, and other similar substances.

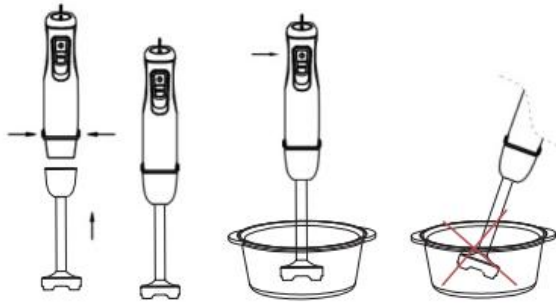
#### **I. Milk Frother**

The milk frother snaps into detachable whisk gear. This attachment is great for making milk foam for your coffee.

#### **J. Beaker**

The 600ml beaker is dishwasher safe. Use this container to blend drinks, shakes, salad dressings, and more.

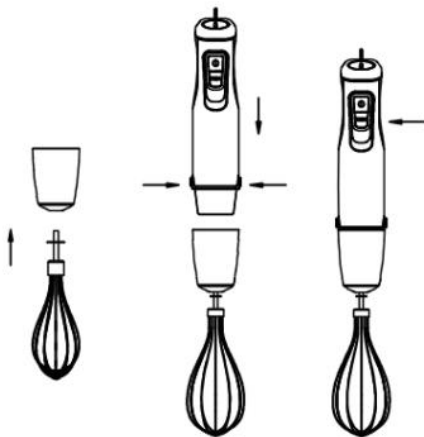
### **Using The Blender**



The blender is used to mince or mix the food.

1. Align the main body with the blending shaft and insert the blending shaft onto the motor unit until it locks, you can hear and feel them click together.
2. Put the blender into the container. Hold the switch I or switch Turbo and move the blender up and down. The liquid ingredients you are mixing cannot submerge the juncture of the blender.
3. Do not immerse the motor body or the adapter in water.
4. Always be sure to unplug the power cord from the wall socket before attaching or removing attachments.

### Using The Whisk



The whisk is used to beat a small amount of food, such as egg white, cream, instant dessert, beaten eggs, sponge cake, etc.

1. insert the whisk attachment into the main body.
2. Plug the electrical cord into a wall socket.
3. Put the whisk into the mixture that is to be blended.
4. Press and hold the desired speed button.

The hand blender will continue to run as long as the button is pressed. To turn the hand blender off, release the button and the motor will stop.

### Using The Chopper



1. Chopper is perfectly suited for hard food, such as chopping meat, cheese, onions, herbs, garlic,

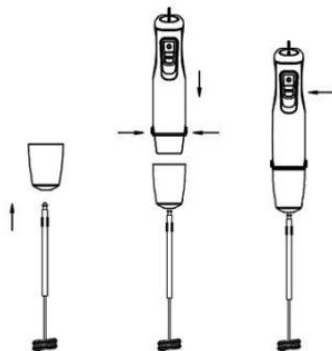
carrots, walnuts, almonds, prunes, etc.

2. Don't chop extremely hard food, such as ice cubes, nutmeg, coffee beans, and grains.

#### **Before chopping:**

1. Carefully remove the plastic cover from the blade. Caution: the blade is very sharp! Always hold it by the upper plastic part.
  2. Place the blade on the center pin of the chopper bowl. Press down the blade and lock the bowl. Always place the chopper bowl on the anti-slip base.
  3. Place the food in the chopper bowl.
  4. Place the chopping bowl lid on the chopper bowl.
  5. Place the motor unit on the chopping bowl lid until it locks
  6. Press switch to operate the chopper.
- During processing, hold the motor unit with one hand and the chopper bowl in the other.
7. After use, Unplug then press the ejection button to remove the motor unit.
  8. Then remove the chopping bowl lid.
  9. Carefully take out the blade.
  10. Remove the processed food from the chopper bowl.

#### **Using The Milk Frother**



The milk frother is used to make dense milk froth for coffee.

1. As shown in the figure, assemble the milk frother.
2. The milk is heated for 20 to 30 seconds, the stirring rod of the milk frother is placed at the bottom of the cup, holding the switch, and the milk foam comes out super fast. Do not shake the mixing head arbitrarily to avoid milk splashing out.
3. In the beginning, the milk foam is a bit rough and can be beaten evenly. The milk foam will become particularly dense and delicate. Then you can pour it into your Italian coffee.

#### **Cleaning And Maintenance**

1. You should unplug the power cord plug before cleaning.
2. Do not touch the sharp blade.
3. Please use a dry dishcloth to wipe the product body. And it is strictly prohibited to let the main unit rinse with water or immerse in the water.

4. Some ingredients, such as sugar cane, can leave pigments on the plastic surface of the container. You can use a rag dipped with rap oil to wipe them out.
5. Before cleaning the accessories, unplug the power plug, remove it from the host, and clean it with water or a little detergent.

**After-Sale Service**

We provide a 30-day full refund and 12 months warranty for this product. If you need help concerning the product, after-sales service, or any other related questions, please feel free to contact us via our official email, [support@healthomse.com](mailto:support@healthomse.com) for the United States and Canada; and [service@healthomse.com](mailto:service@healthomse.com) for the European countries.