

Installing your **SCHWUNG** Odyssey Lamp 1

Collection

Odyssey

2023



Our goal is to bring energy, warmth and pleasure into your personal space. It's great to be here.

Safety
instructions 6

Components
and features 7

Assembly
instructions 8

Cleaning and
maintenance 10

Troubleshooting 11

Safety instructions



**We recommend installation
by a licensed electrician.**

Safety instructions

These instructions are provided for your safety. It is very important that they are read completely before beginning the installation of your fixture.

1. Turn off electricity at the main circuit breaker panel before beginning installation.
2. This direct wire fixture must be installed by a certified and licensed electrician. The customer should not attempt to install.
3. This fixture has been rated for up to 1 (G) 40W max E12 base bulb. To avoid the risk of fire, do not exceed the recommended wattage.
4. If any special control devices are used with this fixture, follow the instructions to assure full compliance with the N.E.C. requirements.
5. This fixture should only be used with a trailing edge dimmer.
6. Mounting hooks and wall anchors are not included. To select the proper type of mounting hook /wall anchor for your wall/ceiling please contact your local hardware store for assistance. If you have any questions, contact a licensed electrical contractor.

Warnings

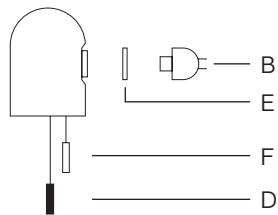
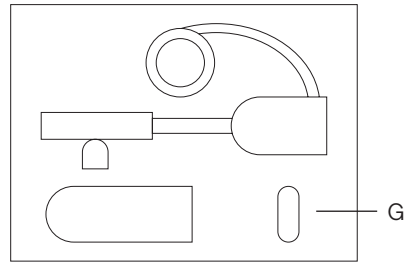
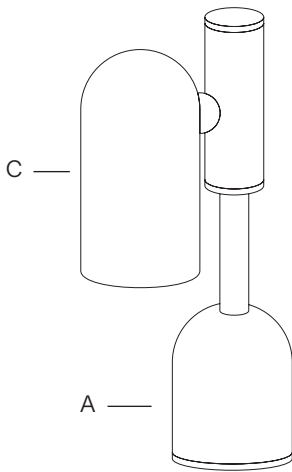
- Do not mount or unmount the glass cylinders if the fixture or light bulbs are hot.
- All wires are connected. Do not remove the ceiling light from its packaging by pulling on the power cord, as a bad connection may result.
- Do not use if the light cable/cord is damaged.
- To reduce the risk of fire, electrical shock or personal injury, always turn off the light fixture and allow it and the globes to cool prior to replacing light bulb.
- When mounting the fixture, always use the cotton gloves included.
- Do not touch bulb when fixture is turned on. Do not look directly at lit bulb.
- Keep flammable materials away from lit bulb.

Components and features

FEATURES

- Hand-crafted in brass
- Mouth-blown glass cylinder

COMPONENTS



- A Lamp base (1x)
- B Bulb socket (1x)
- C Glass cylinder (1x)
- D Retainer ring (1x)
- E Inner ring (1x)

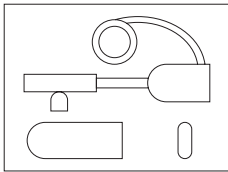
- F Outer ring (1x)
- G Light bulb (1x):
Max wattage 40W
Bulb base E12
Max length 80mm

Assembly instructions



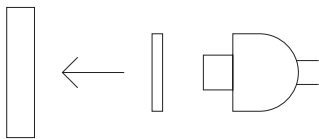
Make sure you cut off power supply at the main fuse box/circuit breaker before commencing any work.

1



Carefully unpack the contents. Leave the glass cylinder in the packaging.

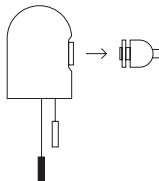
2



To mount the glass cylinder, remove the retainer ring [D] from the bulb socket, and place the larger inner ring [F] onto the socket.

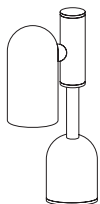
NOTE: Once the side angled to face the socket, the ring will hang loose. You will position it in the next step.

3



Place the smaller outer ring [F] onto the socket and screw the retainer ring [D] onto the socket to secure the glass cylinder. The inner and outer rings let you set the cylinder in the right position.

4



Insert the 40W max E12 light bulb [G] into the socket (max. 80mm long). The lamp is ready to be connected to the power supply. Enjoy your Schwung Lamp.

Cleaning and maintenance



Make sure you cut off power supply to the lamp before commencing cleaning operations.

Components	Maintenance	Tools
Brass Frame	Clean every month using a soft cloth, dampened slightly with water. Make sure the frame is dry before switching the lamp back on.	Soft cloth, water
Glass cylinders	Clean regularly with a soft dry cloth. Clean only the outside of the cylinder. If especially dirty, use a wet cloth first. Grease can be removed with a gentle glass cleaner.	Soft cloth, Cotton gloves (!)
Light bulbs	Make sure your power supply is off before changing the bulb. Unscrew the globe where bulb needs replacing. Gently remove the bulb by pulling it out and replace with a LED bulb of the same parameters.	LED bulbs, Cotton gloves (!)

NOTE: Please remember, solid brass may tarnish over time. This is a natural process. Make sure you follow our guidelines to preserve the great look of Schwung lighting for years.

Troubleshooting

Problem	Possible Cause	Action
Tarnishing	Oxidation of brass is a natural process. Although it is lacquered, its color may change slightly over time.	No action is necessary apart from regular cleaning. See the Maintenance section.
Crooked hanging	Wrong positioning of cylinders.	Loosen the retainer ring and position the cylinder correctly. Turn the retainer ring gently to secure the position.

NOTE: Dear client, please be assured our team strives to deliver highest quality products. The handmade nature of the products offers a unique aesthetic experience and allows for small imperfections, which is inherent in crafts. If solutions offered below are not sufficient, please do not hesitate and contact our customer service.

Having trouble?

We're sorry to hear that.

Our enlightened objects are designed for longevity.

Each piece is made by hand to ensure the highest possible quality and a unique aesthetic experience.

This means you may encounter small surface imperfections. We like to think of them as whispered greetings from our craftspeople. But should you have any concerns about your product and the previous solutions fail to help, please don't hesitate to email us at info@schwung.design