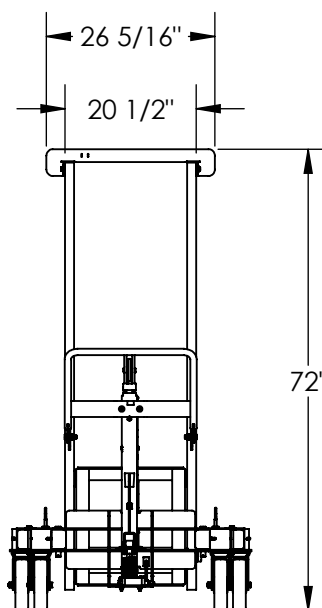
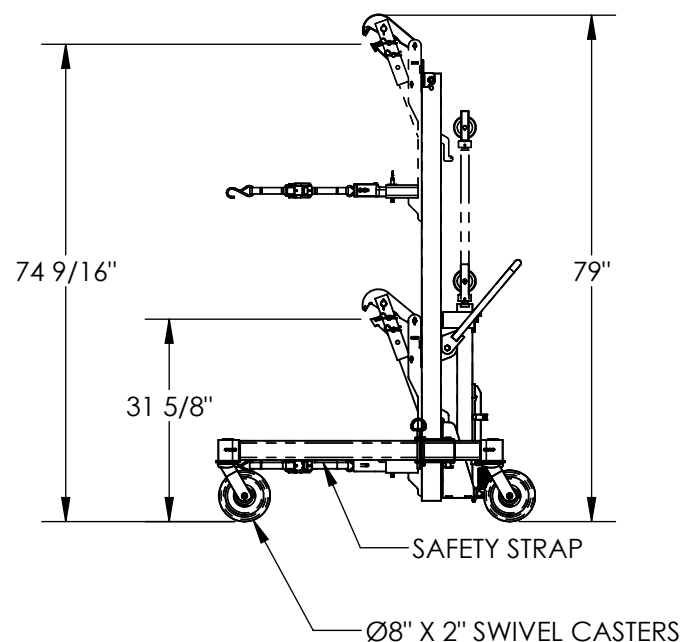
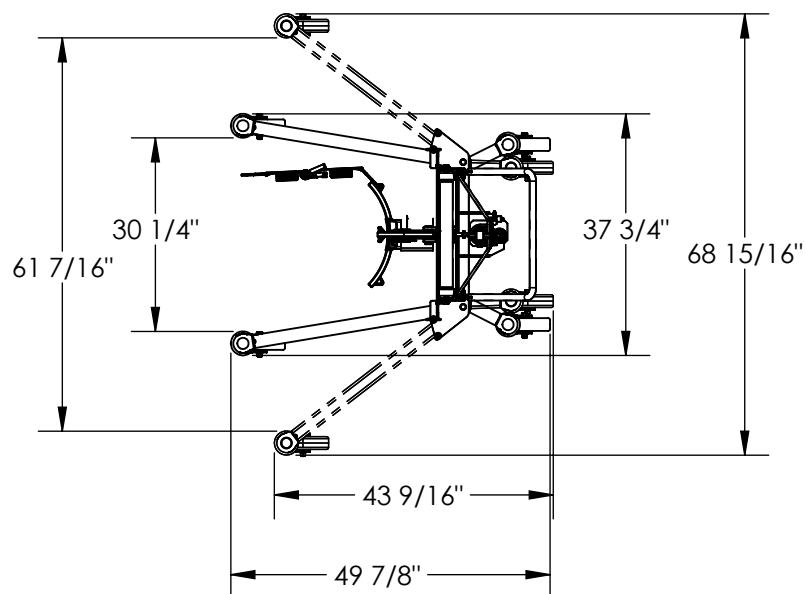


ECONOMICAL DRUM TRANSPORT - DCR-880-H-HP

APPROX WEIGHT: 300.89 lbs.
DOES NOT INCLUDE WEIGHT OF POWER OR PACKAGING!!!

*** ANY ADDITIONS, DELETIONS, OR OMISSIONS MUST BE CORRECTED ON THIS DRAWING AS THIS DRAWING WILL BE CONSIDERED ALL INCLUSIVE ***

ALL GRAPHICS PROVIDED ARE FOR REFERENCE ONLY. IF CERTAIN DIMENSIONS ARE CRITICAL PLEASE VERIFY THOSE DIMENSIONS WITH YOUR SALESPERSON



STANDARD FEATURES

MODEL NUMBER: DCR-880-H-HP
CAPACITY: 880 LBS.
FRAME HEIGHT: 72"
MAX. OVERALL HEIGHT: 79"
MAX. OVERALL LENGTH: 49 7/8"
MIN. OVERALL LENGTH: 43 9/16"
MAX OVERALL WIDTH: 68 15/16"
MIN. OVERALL WIDTH: 37 3/4"
MAX INSIDE WIDTH: 61 7/16"
MIN. INSIDE WIDTH: 30 1/4"
RAISED JAW HEIGHT: 74 9/16"
LOWERED JAW HEIGHT: 31 5/8"
FOOT PUMP OPERATION
(4) Ø8" x 2" SWIVEL CASTERS
INCLUDES SAFETY STRAP
TOUGH BAKED IN POWDER COATED YELLOW FINISH

SPECIAL FEATURES

NONE

DIMENSION TOLERANCE $\pm 1/4"$

APPROVAL

I, THE UNDERSIGNED, AGREE THAT THE PRODUCT AS REPRESENTED SATISFIES DESIGN AND DIMENSION REQUIREMENTS. I ALSO ACKNOWLEDGE MY DUTY TO CONFIRM PRODUCT AND INSTALLATION COMPLIANCE WITH ALL APPLICABLE FEDERAL, STATE AND LOCAL REGULATIONS AND STANDARDS.

ANY MODIFIED UNITS ARE NON-RETURNABLE

[] As drawn [] As marked

Signed: _____ Date: _____

Printed Name: _____

LEAD TIME WILL START UPON RECEIPT OF SIGNED APPROVAL DRAWING

FOR INTERNAL USE ONLY
PROJECT SIGN OFF

SALES	
ENG.	
FAB.	
POWER	

DISTRIBUTOR'S NAME:

VESTIL MANUFACTURING

DRAWN BY: WHR

DATE: 2/22/2012

REFERENCE: X

SCALE: 1:30

QUOTED LEAD TIME: X

QUOTE # X

P.O.# X

W.O.# X

SALES: X

FILE NAME:

40-007-022