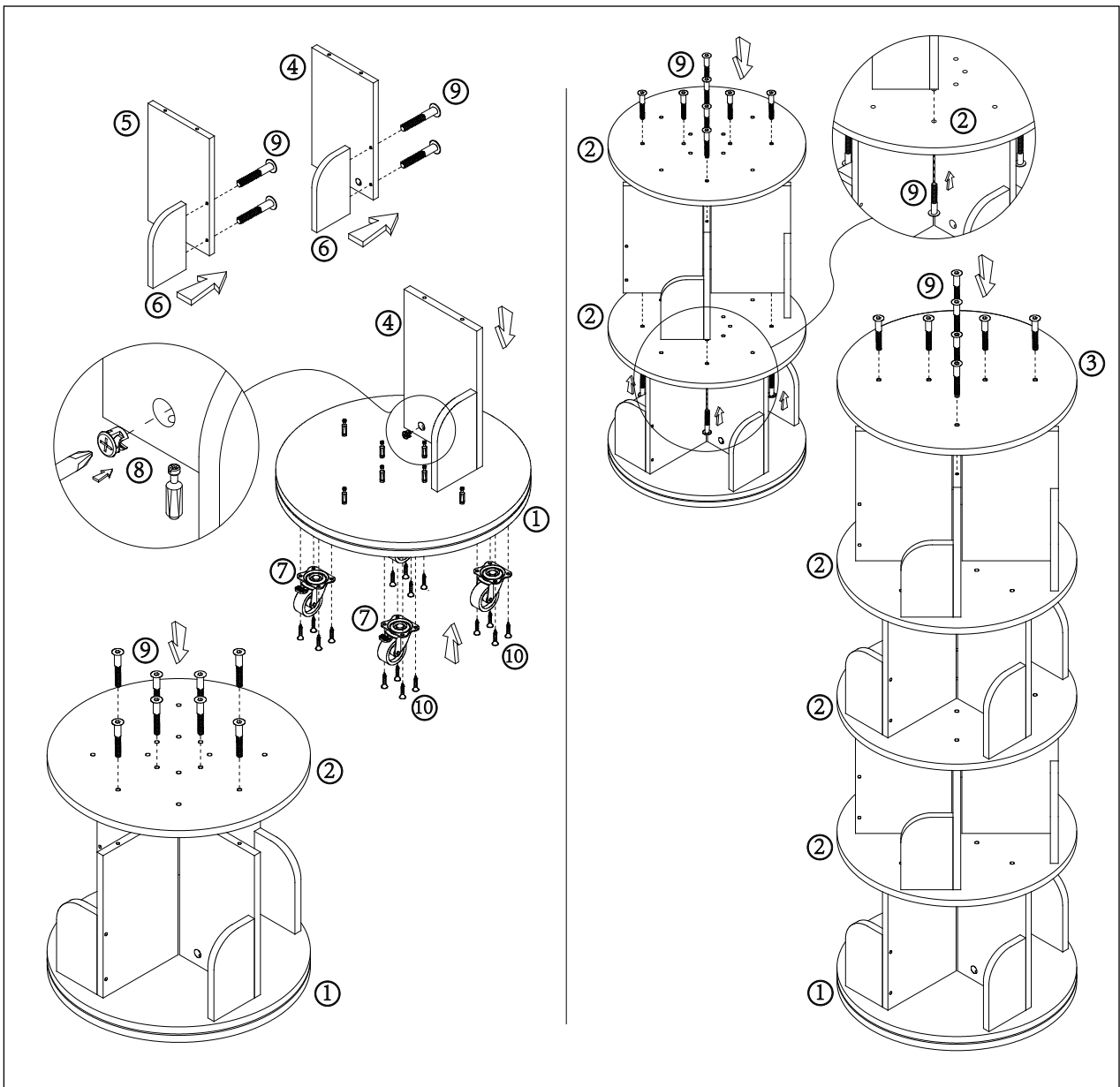
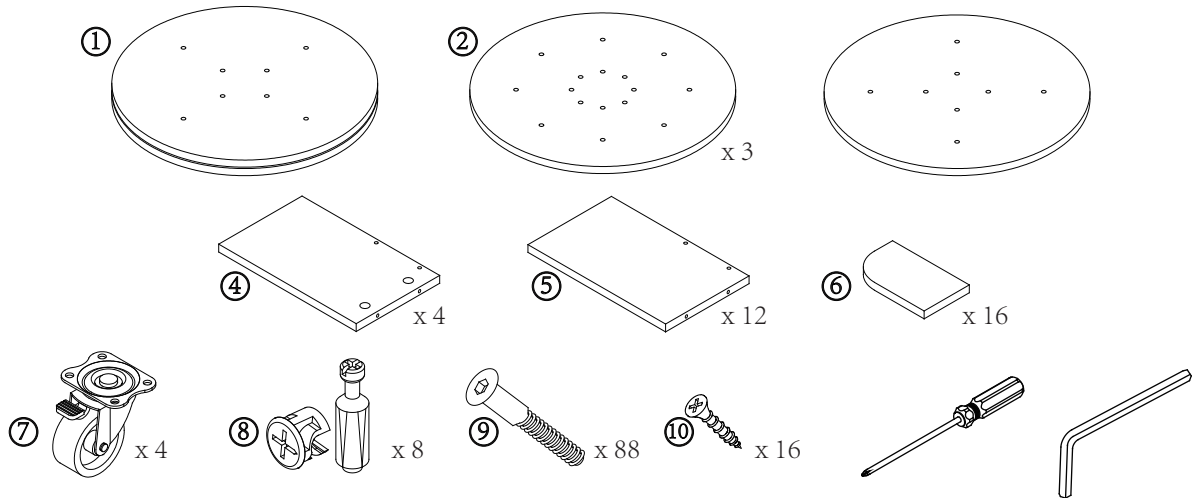


Installation instructions

please put the photo into the photoframe before the assembly, and tear off the protective film on the glass



1.Wearing glove during installation is recommended to prevent injury from sharp objects.

2.Before tighten up screws/bolts, please making sure place the screw/bolt tips to illustrated position, do not use brutal force when 2 parts are not connected correctly.

3.Please insert cam connector vertically before install screws.