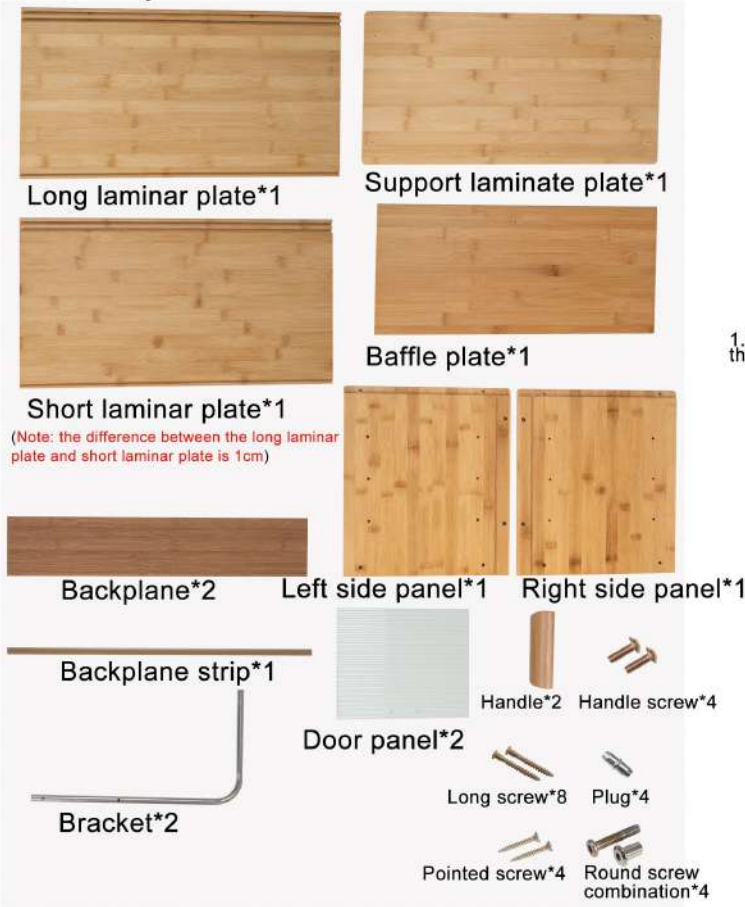


Installation instruction

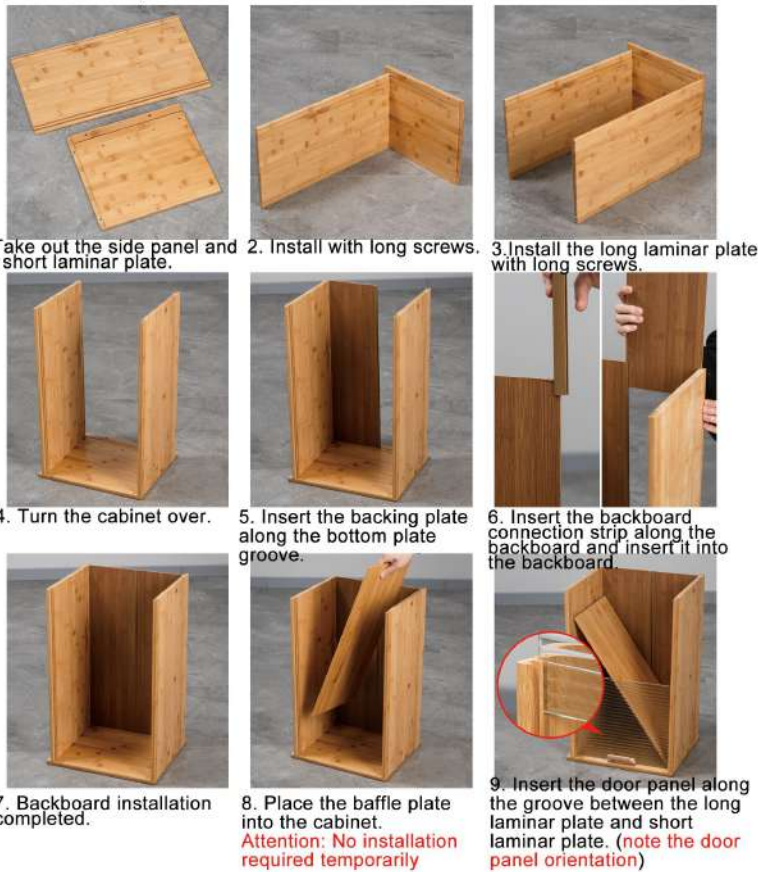
Accessory List:



Accessory mounting method



Installation steps





10. Insert another door panel (note the orientation of the door panel)



11. Install the side panel with long screws.



12. Take out the bracket laminate and bracket.



13. Install the left bracket with pointed screws.



14. Install the left bracket with pointed screws.



15. Mount the bracket and cabinet with a combination of round screws.



16. Bracket installation is complete.



17. Turn the cabinet over.



18. Insert plugs.



19. Place the baffle plate from step 8 on the plugs.



20. Installation is complete.