

### Cabinet Mounting Instructions -Bristle Dartboards-

1. Place this template inside the cabinet, ruler line on the bottom edge of the cabinet.
2. Center template within the cabinet using ruler on the bottom edge. If necessary crease the edges. If necessary use tape to hold in place.

**NOTE:** The cabinet will have pre-drilled holes at the center. These holes are used to mount a clip for the bristle dartboard.

3. Locate the pre-drilled holes at the center of the cabinet. Use a pen or a pencil to poke through the template at each hole. The middle point between these holes will be the center of the bristle dartboard.
4. You now need to locate the drilled mounting holes in the corners of the cabinet. Use a pen or a pencil to poke through the template at each hole.

5. Remove template from cabinet. Locate two wall studs. If not using wall studs you will need to use plastic anchors provided. You will need to drill pilot holes if using the anchors. If you do not mount the cabinet properly it may fall and cause injury.

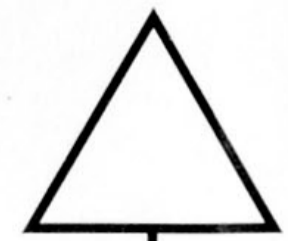
**Using level and tape measure locate template over studs if possible. Pin or tape 68" (173 cm) from the u shaped notch in the dotted hanging bracket to the floor.**

6. Mark the screw holes through this template onto the wall.
7. Remove this template from the wall. Mount the cabinet using screws into wall studs or the appropriate expansion anchors.
8. Screw dartboard hanging bracket to cabinet.

Using the instructions that came with your dartboard, you may now mount your darboard.

CENTER OF WALL STUD

CENTER OF WALL STUD



Dartboard hanging bracket

Measure  
68"  
to floor

Position this edge along the  
inside lower edge of cabinet.



## TOOLS NEEDED:

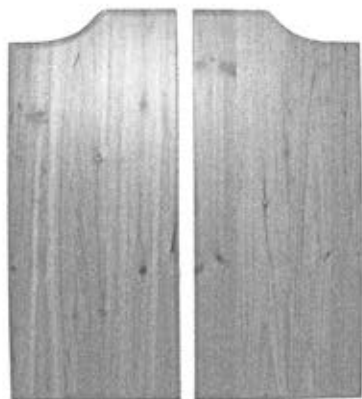


PHILLIPS  
SCREWDRIVER

## WHAT IS INCLUDED:



DARTBOARD CABINET (A)  
(Position of finger groove and cushion pad  
should be on the bottom of the cabinet)



CABINET DOORS (B)

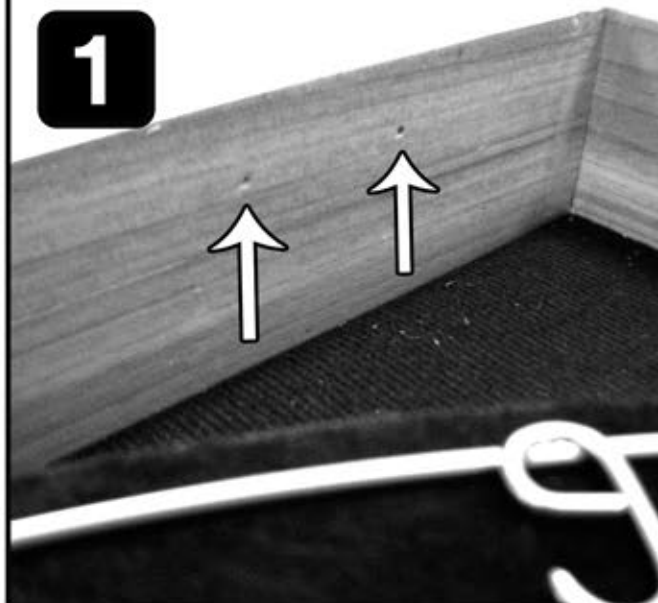


4 HINGES (C)



16 SCREWS (D)

**1**



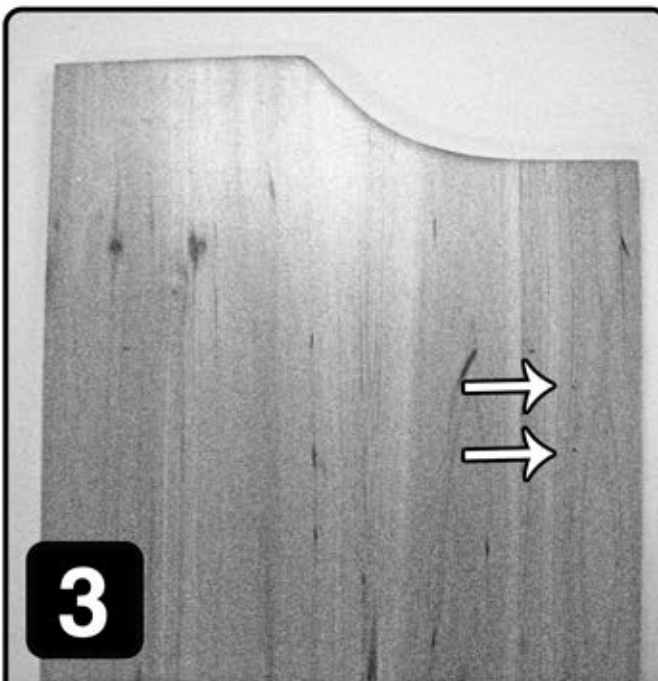
Locate pilot holes roughly 3 inches from the top and bottom on both sides of the cabinet (A).

**2**



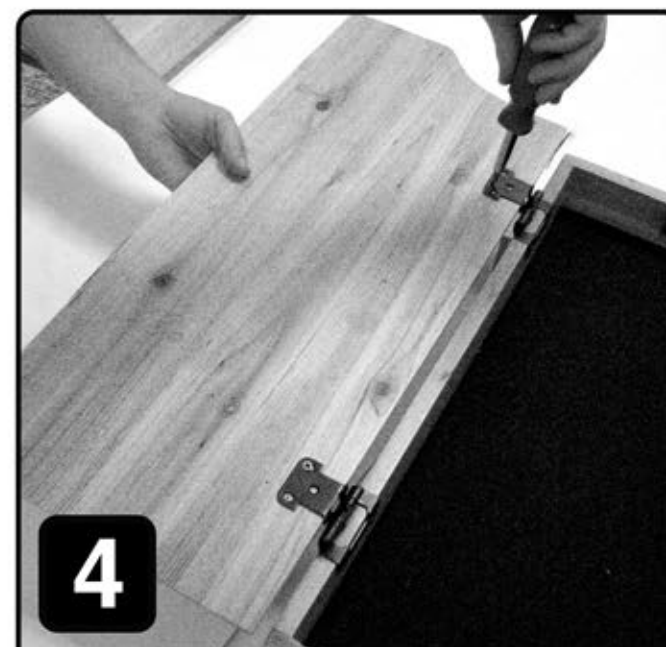
Align hinge (C) with pilot holes and fasten with screws provided (D). Repeat for remaining 3 hinges.

**3**



Locate pilot holes on cabinet door (B).

**4**



Align hinges (C) with pilot holes and fasten with screws provided (D). Repeat for opposite door.