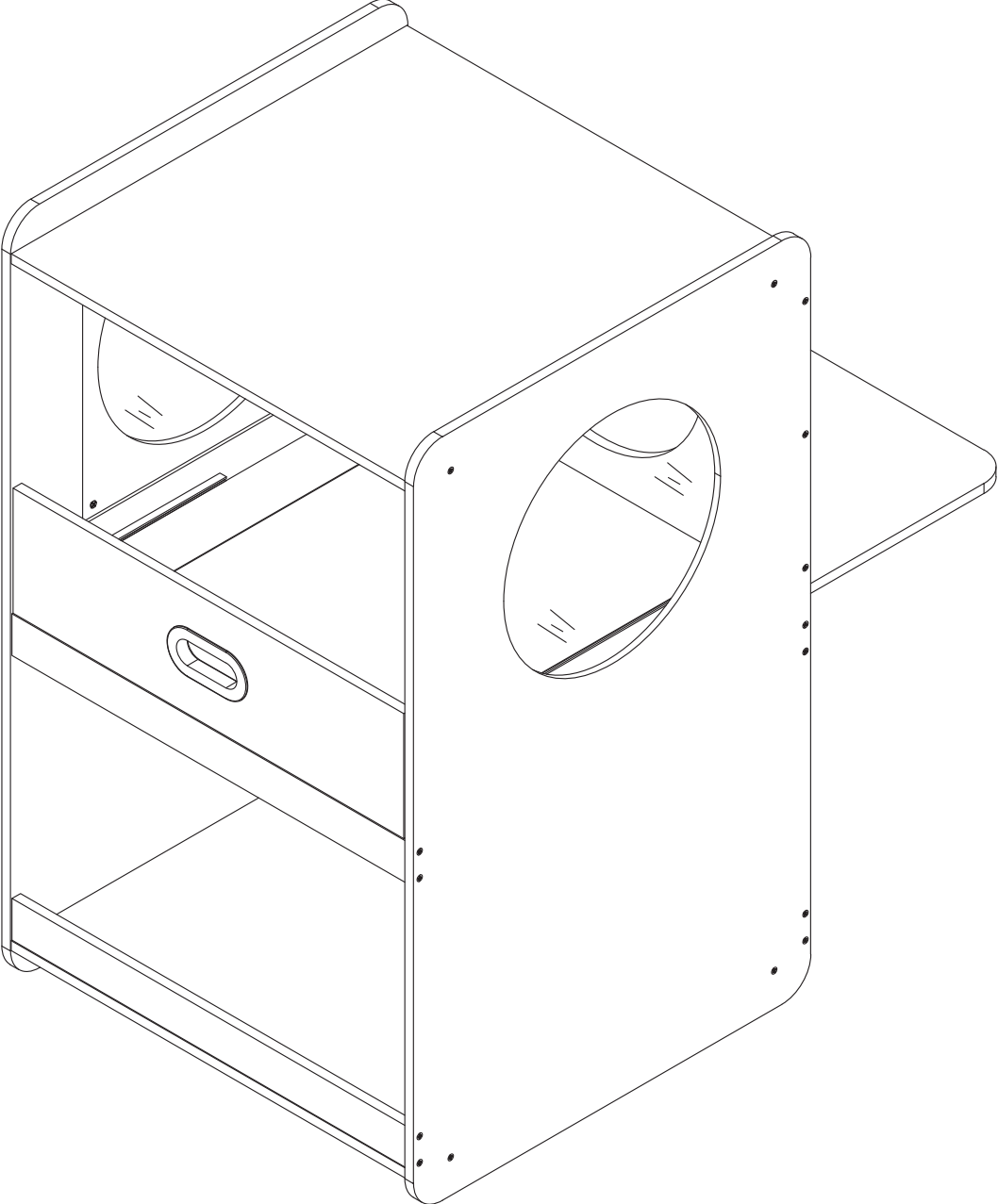
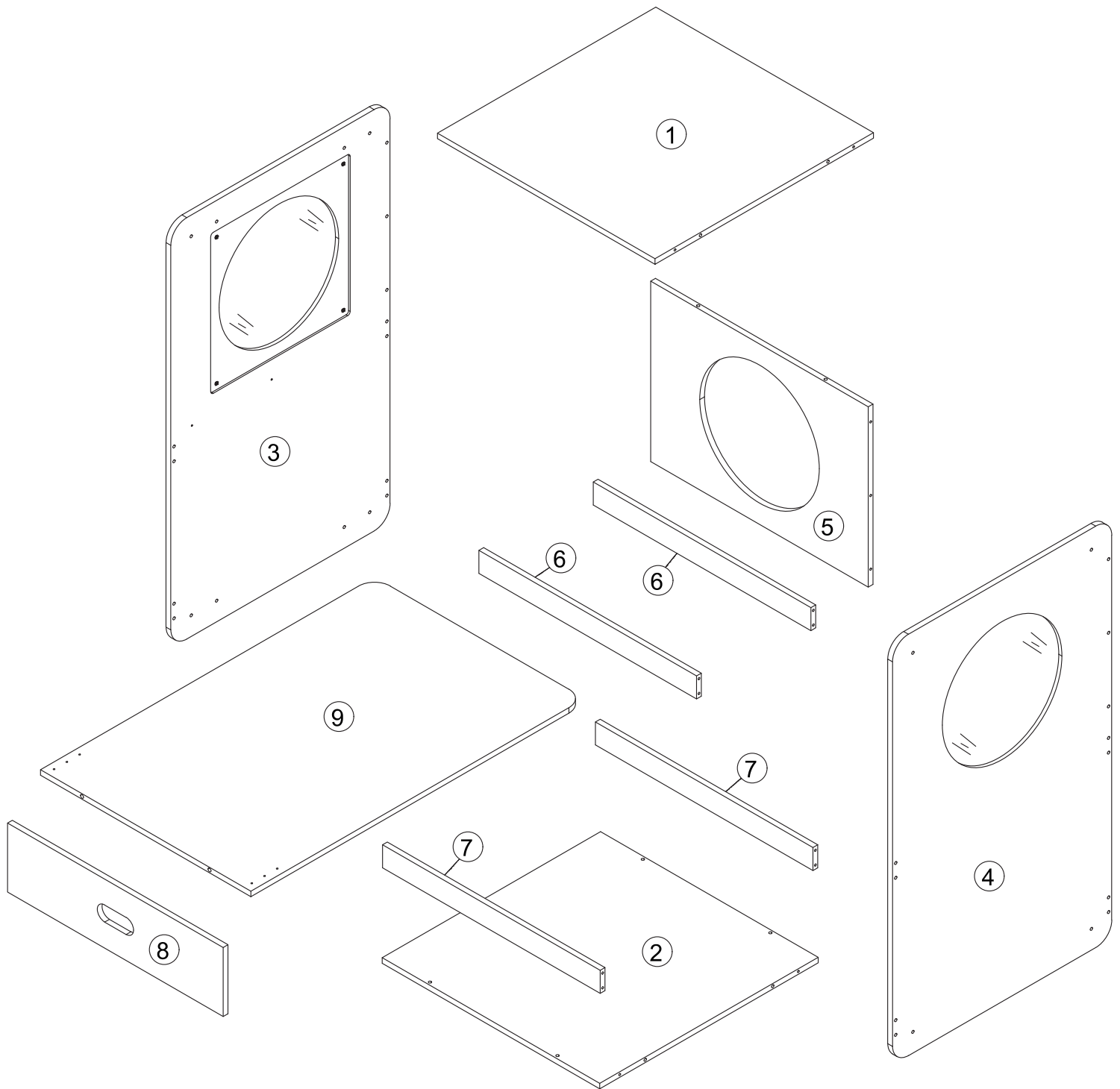


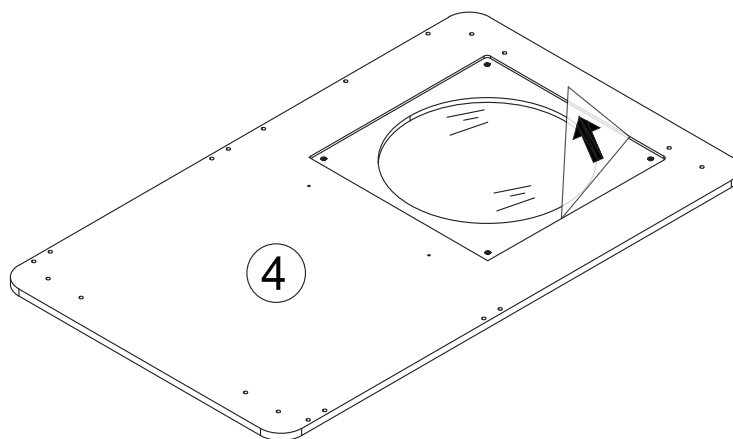
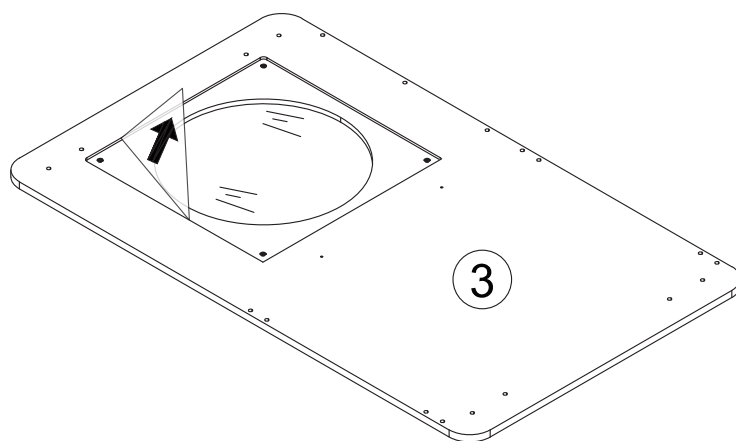
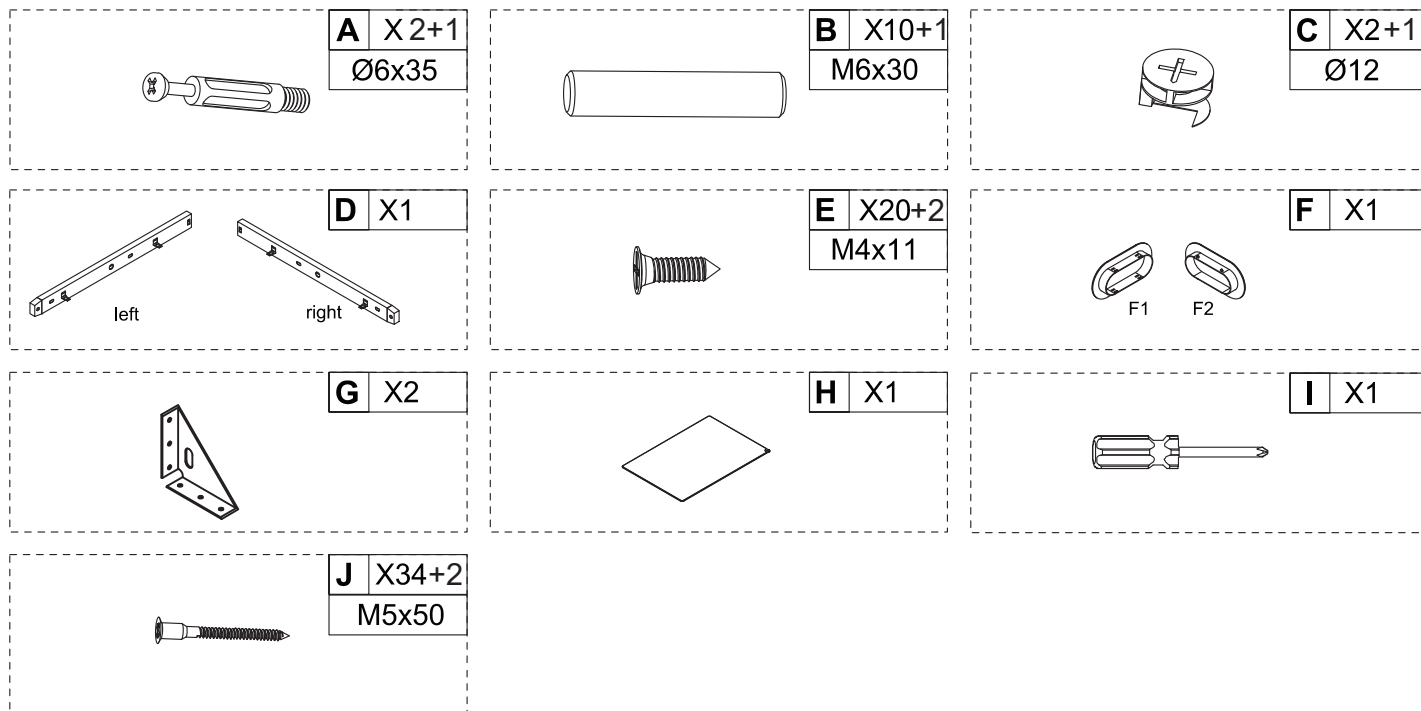
Assembly Instructions



EXPLODED DRAWING:

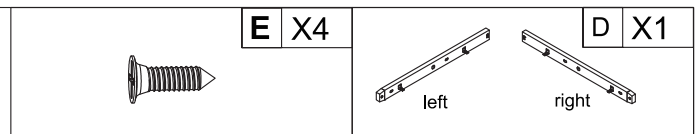


PARTS:

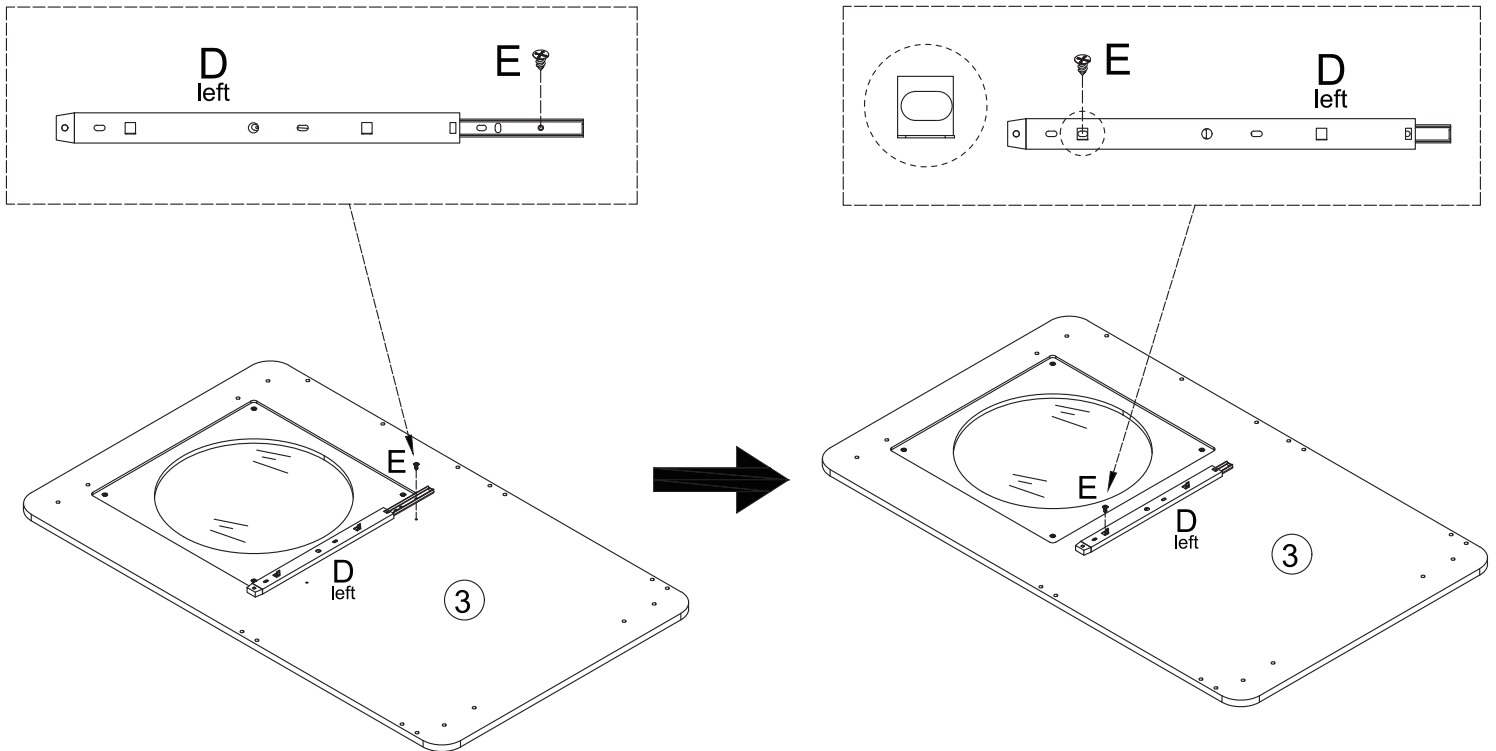


Remove the protective film

1.

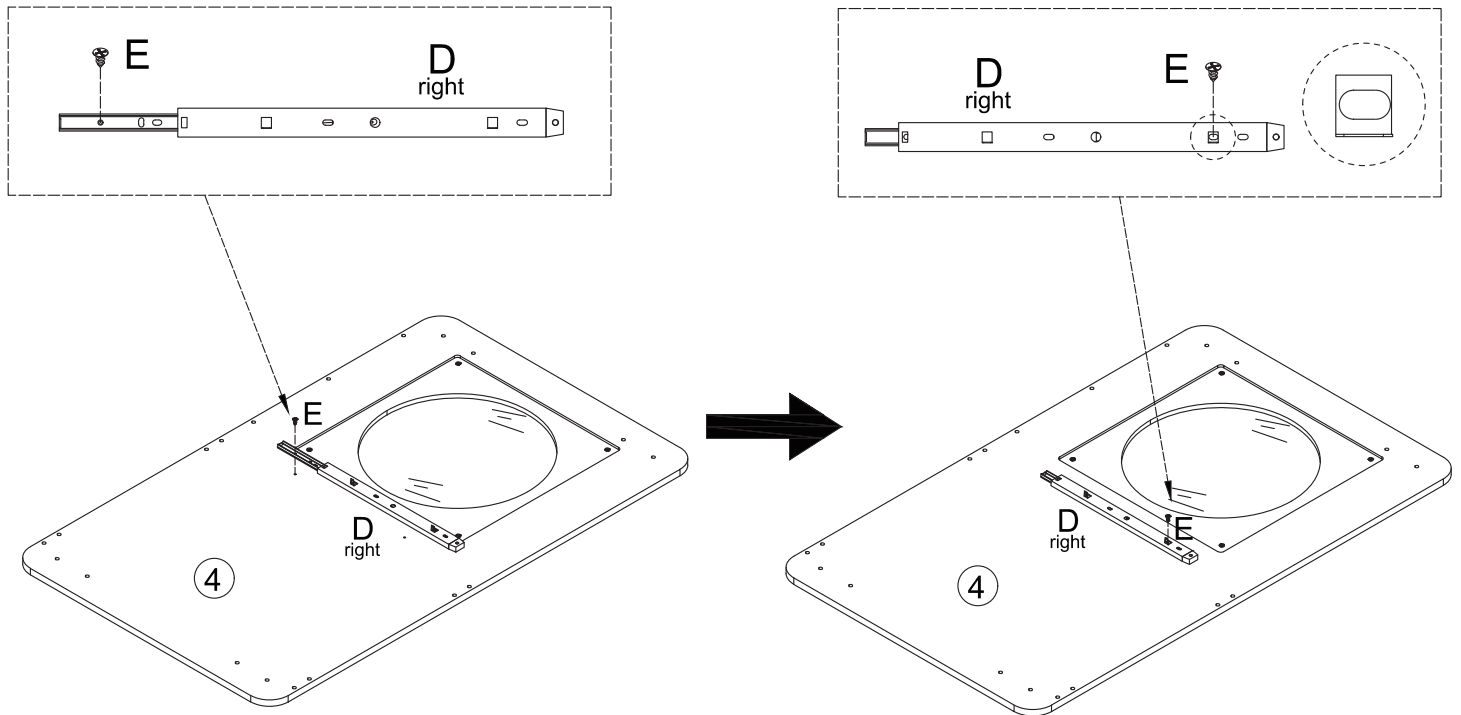


No need to separate the rails



Install the left D inner rail to Part #3 with screws E x2 as shown. Pull out the slide rail and insert the first screw E (as shown in the left image). Then close the rail, and when the two holes overlap (as illustrated in the enlarged diagram), insert the second screw E.

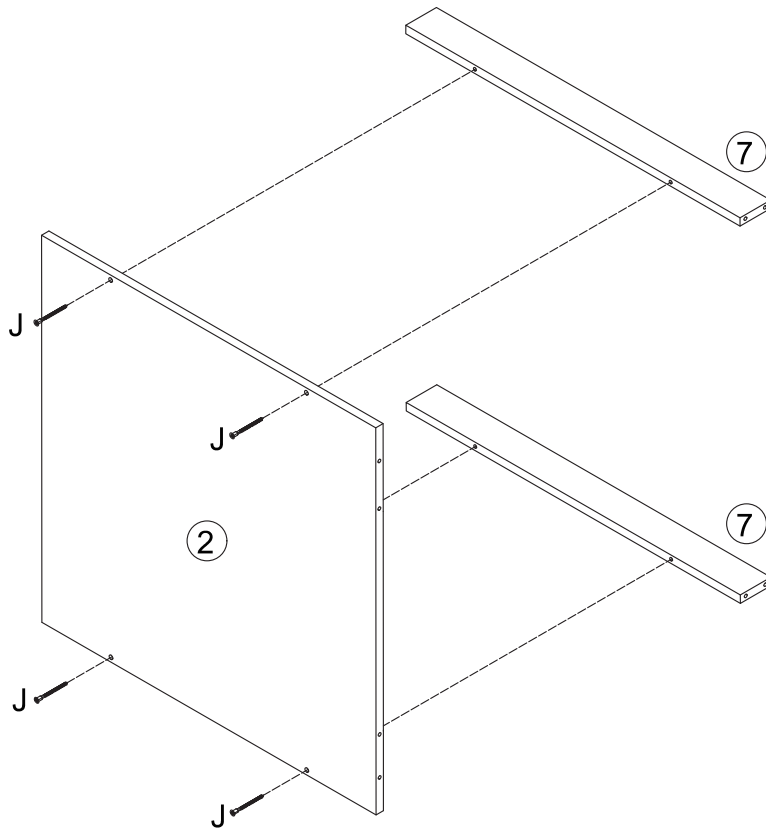
No need to separate the rails



Install the right D inner rail to Part #4 with screws E x2 as shown. Pull out the slide rail and insert the first screw E (as shown in the left image). Then close the rail, and when the two holes overlap (as illustrated in the enlarged diagram), insert the second screw E.

2.

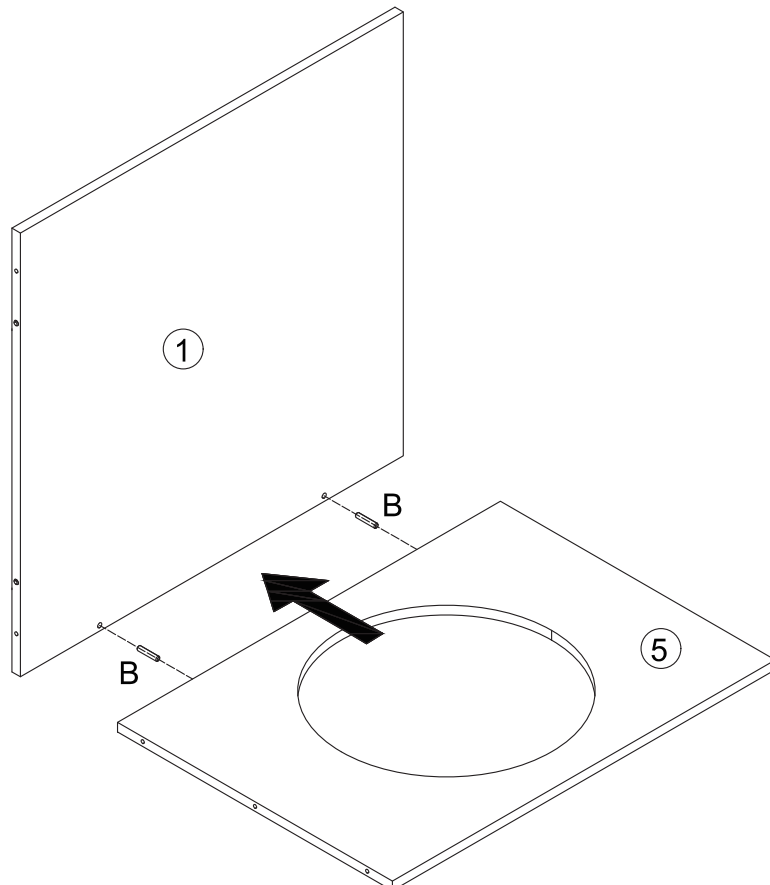
J X4



Attach Part #7 x2 to Part #2 with screws J x4 as shown.

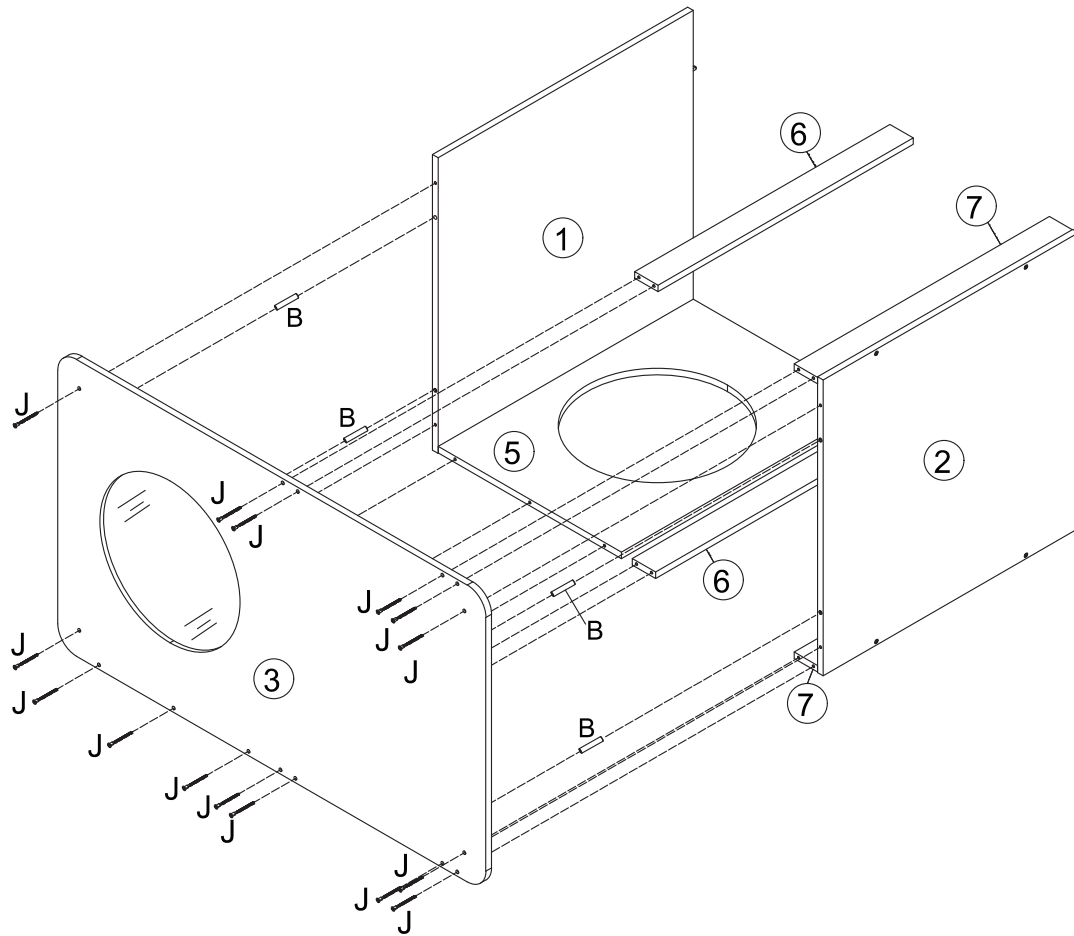
3.

B X2



Attach Part #5 to Part #1 with dowel B x2 as shown.

4.



J X15

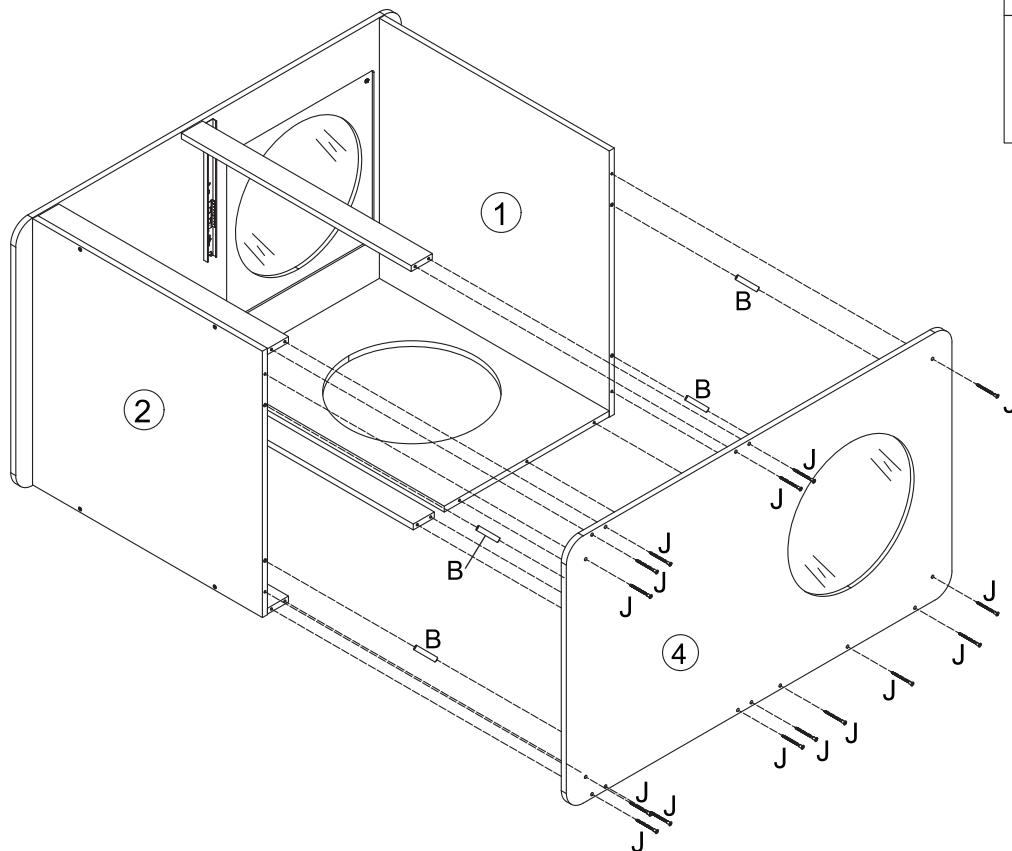


B X4



Attach the assembled unit from step 3&step 4 and Part #6 x2 to Part #3 with screws J x15 as shown.
Install Dowel B x2 to Part #1 as shown.
Install Dowel B x2 to Part #2 as shown.

5.



J X15



B X4

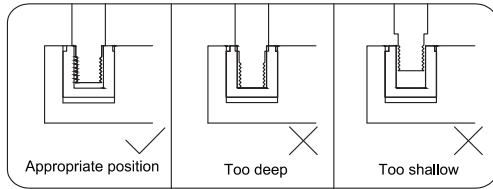


Attach Part #4 to the assembled unit from step 5 with screws J x15 as shown.
Install Dowel B x2 to Part #1 as shown.
Install Dowel B x2 to Part #2 as shown.

6.

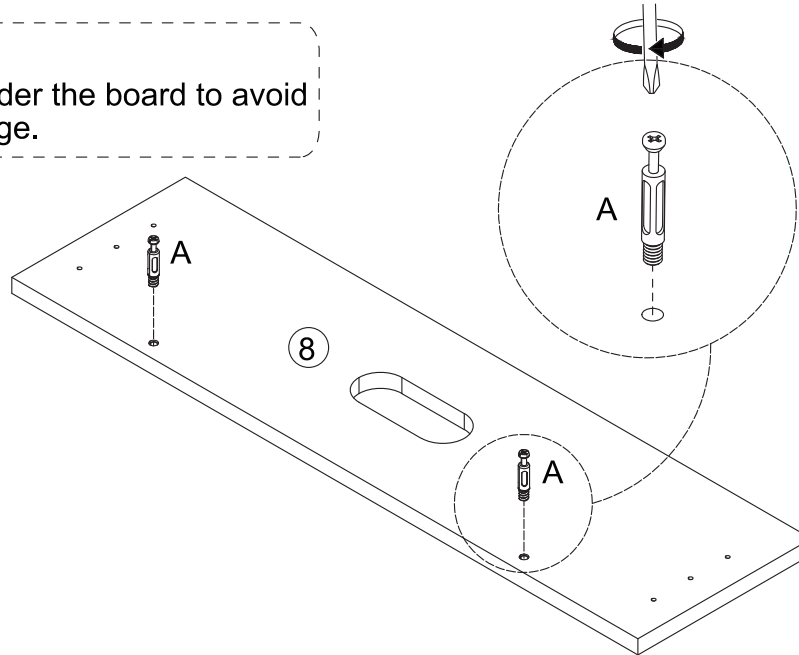
REMARK:

Please do not screw **A** too deep or too shallow.



REMARK :

Put a blanket under the board to avoid scratch or damage.



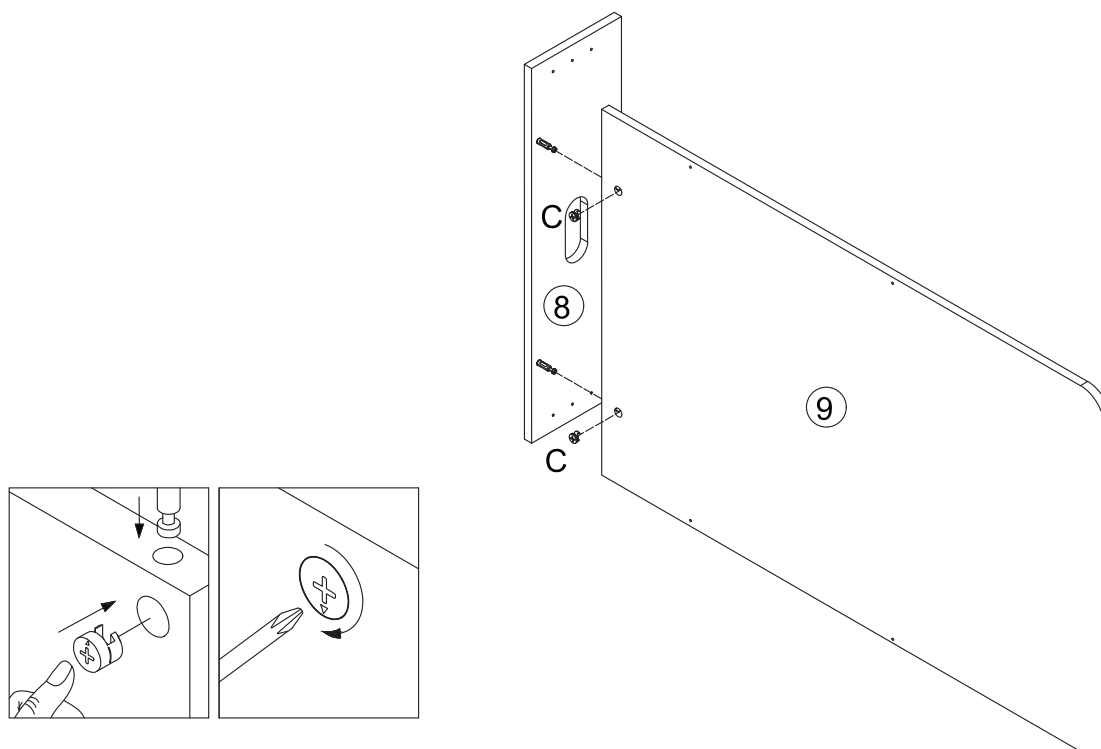
A X2



Install Cam Bolt A x2 to Part #8 as shown.

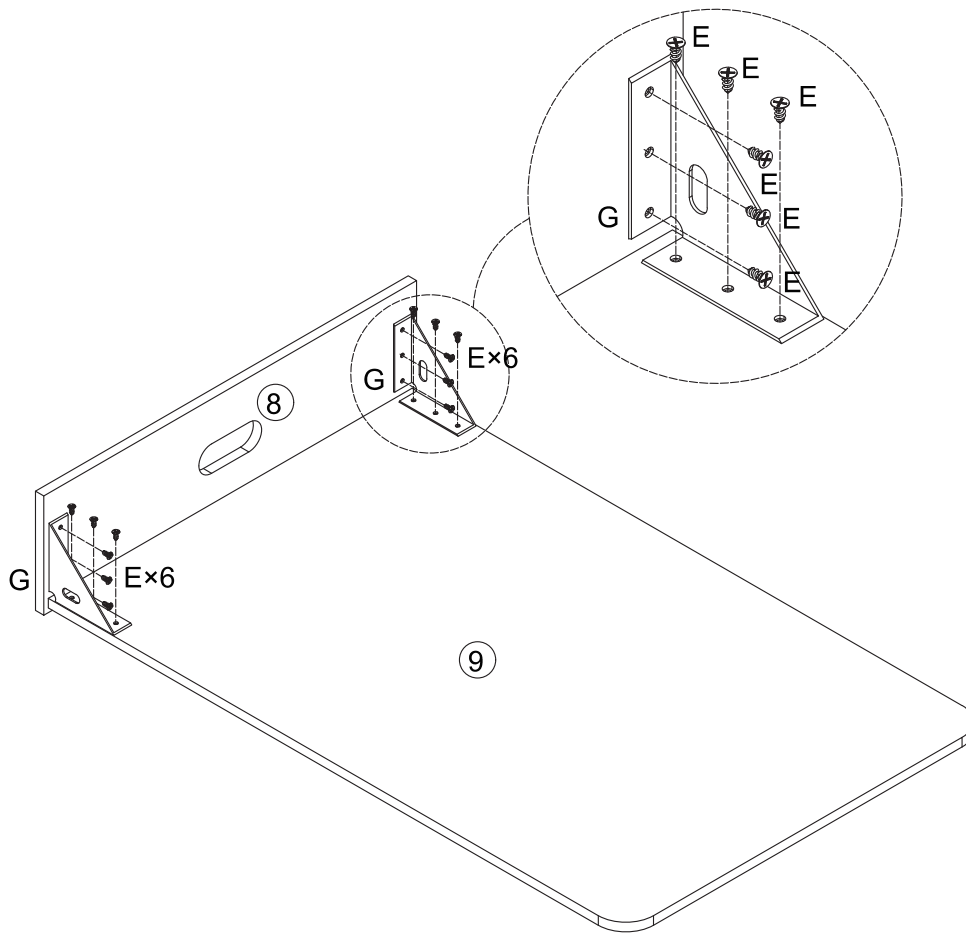
7.



C X2



Attach Part #9 to Part #8 with nuts C x2 as shown.
Turn nuts C x2 to secure position.

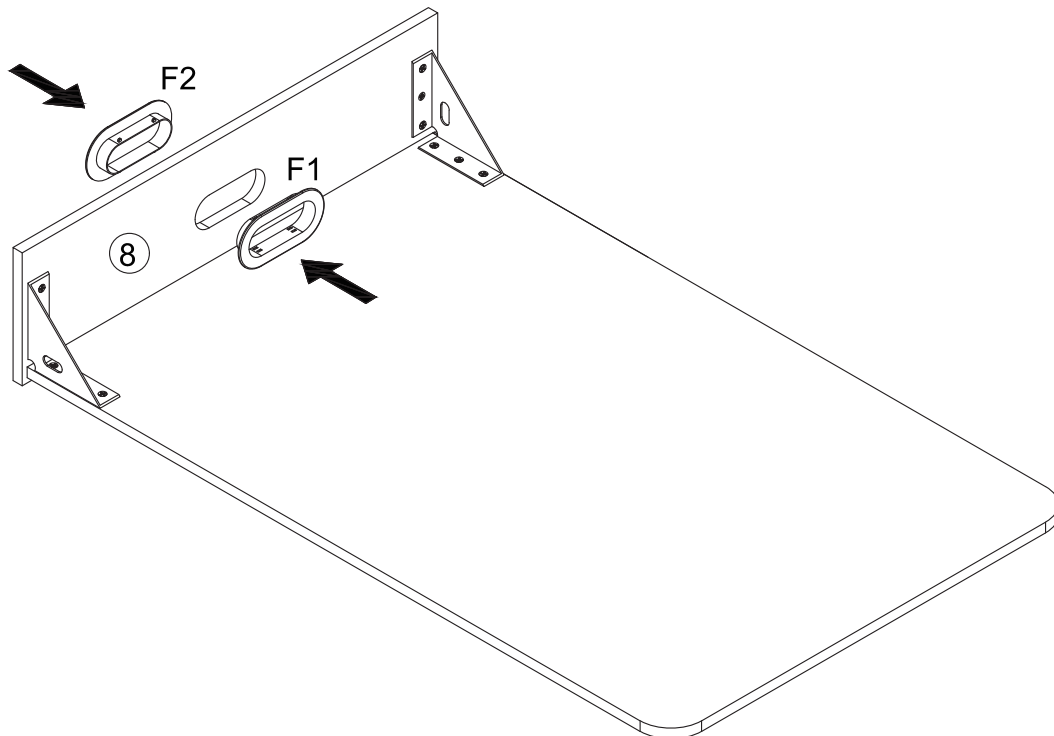
8.





	E X12
	G X2

Install G x2 to the assembled unit from step 8 with screws E x 12 as shown.

9.

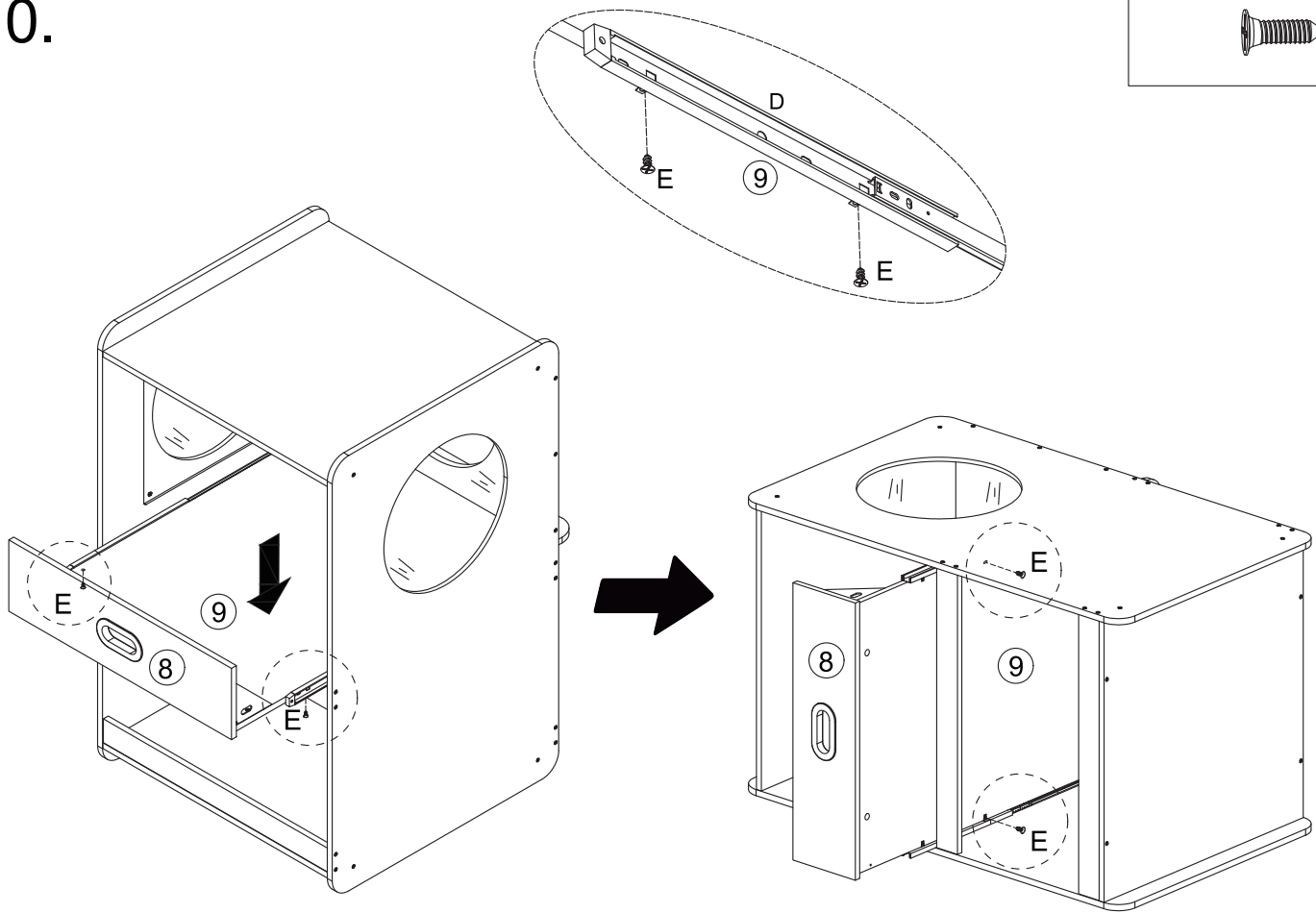


		F X1
F1	F2	

Install F1&F2 to Part #8 as shown.

10.

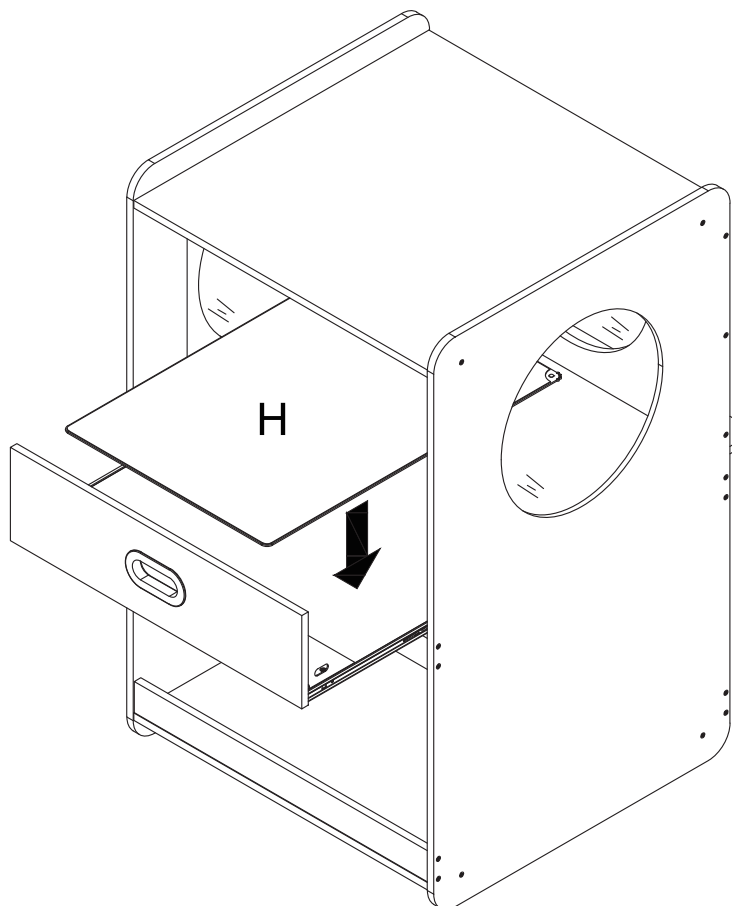
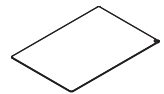
E X4



Place Part #9 onto the slide rail. Fasten Part #9 to the two rail tongue from the underside upward with screws E x 4 as shown.

11.

H X1



Place silicone pad H onto the designated position of the product as shown.