

CONSUMER RESPONSIBILITIES

The DISTRIBUTOR's mirrors products will remain beautiful for many years if you properly care for them. The DISTRIBUTOR does not recommend the use of harsh abrasive cleansers on any of its products. Harsh cleansers will damage the finish of your mirror.

MAINTENANCE

For daily maintenance, use a wet cloth and a soft liquid cleaner. Never use abrasive cleaners or strong bleach, scrapers, metallic brushes, or other objects or any products which can graze or tarnish surfaces.

LIMITED 1 YEARS WARRANTY

This warranty extends only to the original owner user for personal household use only. For commercial uses, additional limitations may apply.

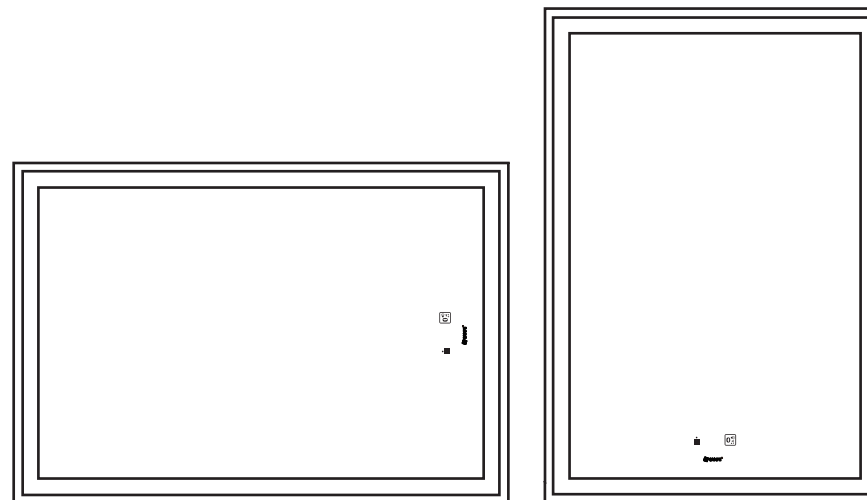
- ▶ The DISTRIBUTOR warrants, mirrors to be free from defects in workmanship and materials under normal use and service for a period of one (1) year.
- ▶ The DISTRIBUTOR will, at its election, repair, replace, or make appropriate adjustment where the DISTRIBUTOR optional inspection discloses any such defects occurring in normal usage within the warranty periods.
- ▶ Please note that the DISTRIBUTOR is not responsible for installation or removal costs.
- ▶ Modification of any mirror's components may void the warranty. This warranty does not cover any claim arising from abuse, misuse, negligence, accident, improper installation or operation on the part of the purchaser. This warranty is void if the DISTRIBUTOR's product is subject to alterations, or if repairs were done to the mirror unit.
- ▶ This warranty does not extend to any components installed by dealers, installers or by any party other than the DISTRIBUTOR.
- ▶ Implied warranties, including that of merchantability or fitness for a particular purpose, are expressly limited in duration to the duration of this warranty.
- ▶ The DISTRIBUTOR disclaims any liability for special, incidental or consequential damages.

THE SOLE REMEDY PROVIDED BY THIS WARRANTY IS THE REPAIR OR REPLACEMENT OF DEFECTIVE PRODUCTS. THIS WARRANTY DOES NOT COVER THE COST OF REMOVAL OR INSTALLATION OF NEW PRODUCTS. THE WARRANTY WILL BE VOID IF THIS ITEM IS INSTALLED WITH OBVIOUS VISUAL DEFECTS.



Smart LED Lighted Mirror Instruction Manual

Model: HCL-55U-2028-EBK / HCL-55U-2432-EBK
HCL-85U-2836-EBK / HCL-85U-3240-EBK



Intertek
Made in China

amazon_US@ganpe.com

NINGBO GANPE OPTOELECTRONICS CO.,LTD

CAUTION

IMPORTANT

The installer and/or user must read, understand and follow these instructions before installing the product. This product must be properly installed before it is used. If instructions are not followed, the manufacturer will not be held responsible for any problems or product malfunction. Failure to follow installation and/or operating instructions voids the warranty.

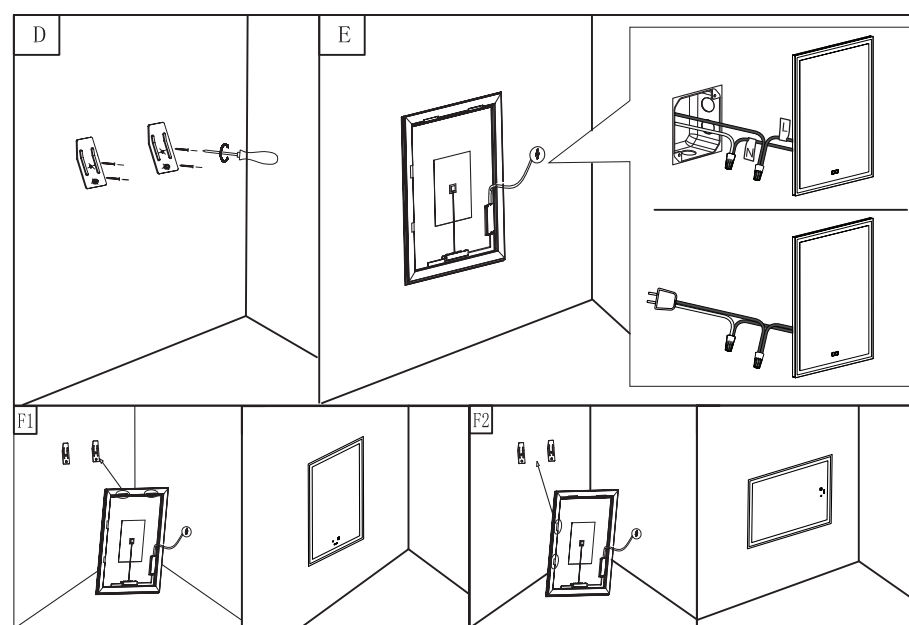
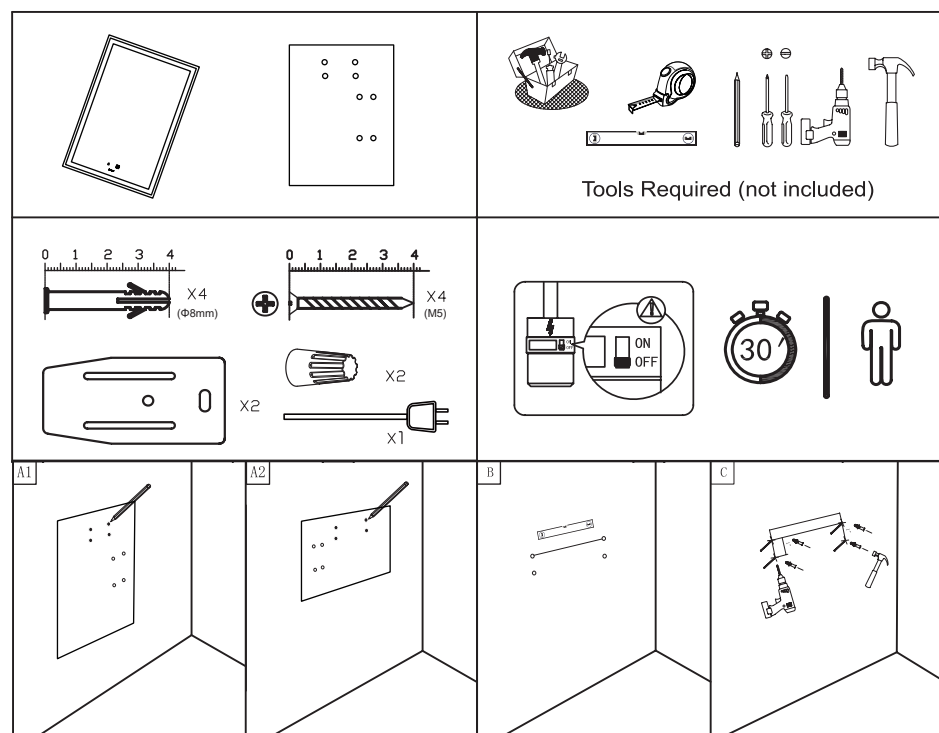
We recommend that this product be installed by a certified electrician. In some states or provinces, it is a legal requirement for this type of product to be installed by a certified electrician, according to the electrical and building codes effective in the region where the unit is used.

WARNING: Risk of electrical shock. Turn off breaker at the panel.

Switch off the main electrical supply from the fuse box/circuit breaker before installing the unit or doing any maintenance.

Do not use outdoor.

INSTALLATION



A1/A2: When installing VERTICALLY or HORIZONTALLY, place the proportional installation paper card at the position where the mirror on the wall is installed, and record the 4 punching points with a pen.

B: Make sure that the line between the two points above is parallel to the ground

C: Drill holes (Φ8mm) and drive into the plastic expansion.

D: Install the hanging galvanized iron sheet

E: Connect the reserved natural and live wires by the wire connector. If there is no reserved neutral and live wires, you can use the supplied power cord with plug.

F: Finally hang the mirror on the iron sheet to start using.

OPERATION

| | |
|--|--|
| | Hand Microwave Induction: When hanging the mirror vertically, Put your hand close to the sensor on the mirror, and wave it to the left or right to switch the light on and off. Wave up and down to change the color temperature. Slowly move your hand forward to the sensor to reduce the brightness, and slowly move away from it to increase the brightness. |
| | Bluetooth Speaker: Use the Bluetooth button to turn on/off the Bluetooth speaker, turn on the phone's Bluetooth and search for "GANPE Mirror", enter the password "6688" after pairing, and wait for the connection to succeed. |

Memory function for the brightness and colour temperature.