



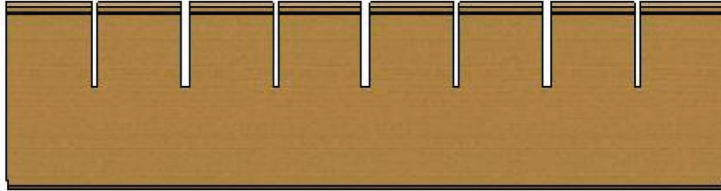
C51008 ASSEMBLY INSTRUCTIONS

Parts:

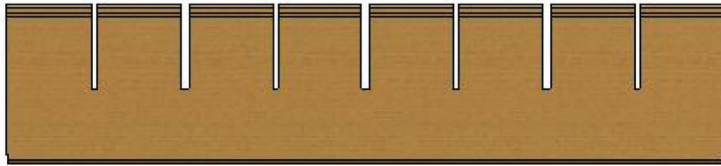
Bottom



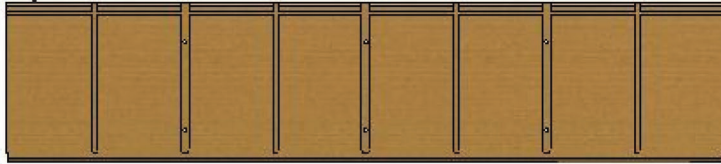
Seat



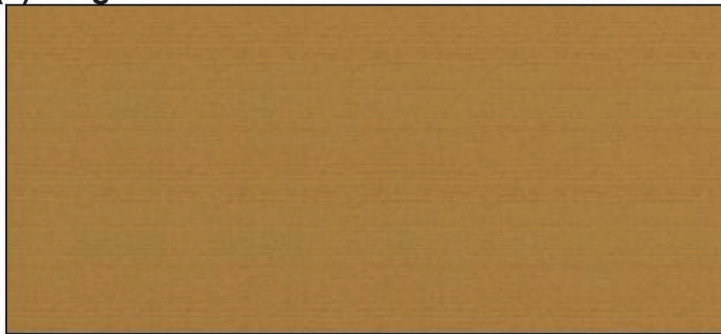
Shelf



Top



(1) Large back



(2) Small backs



(3) 15MM Div



(4) 9MM Div



Set of Sides



Hardware:

- (16) Double Hooks
- (32) Small Screws
- (28) Hex Bolts

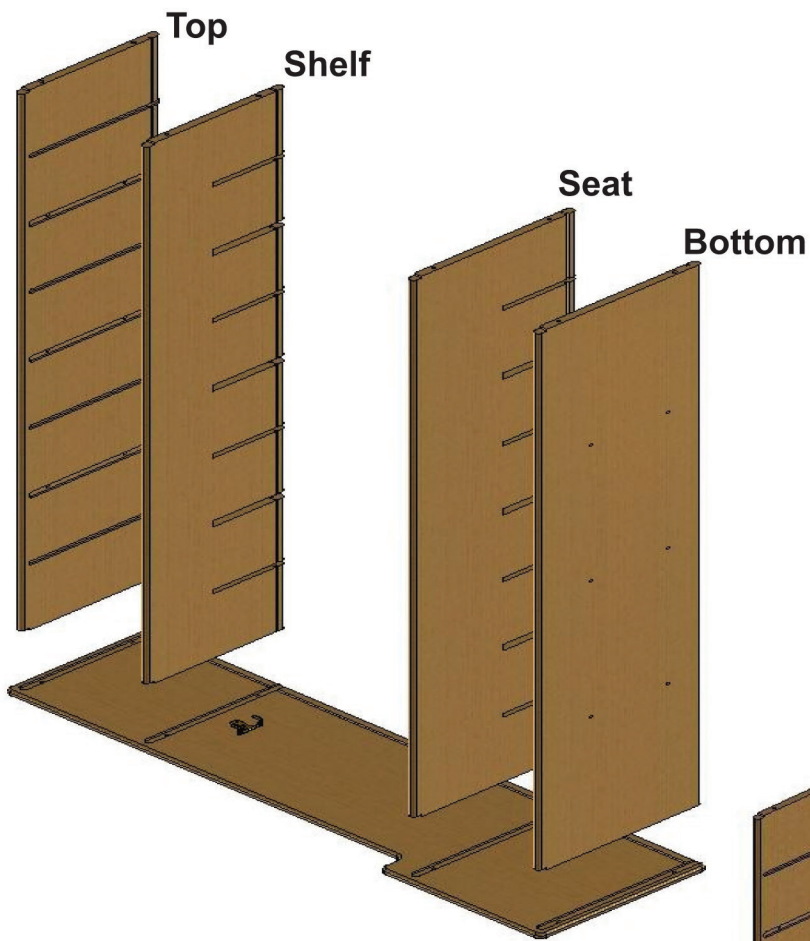


Phillips Head Screwdriver
(Not Included)

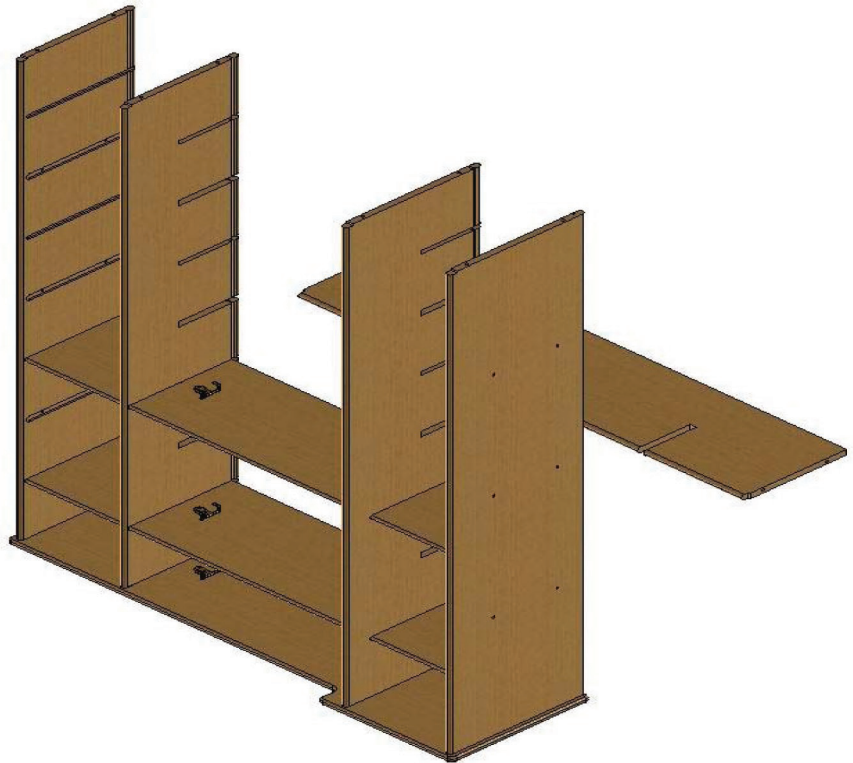
(1) Allen Wrench



For assistance, call: Customer Service 1-800-247-8465



Step 1: Attach **Top, Bottom, Seat, and Shelf** to **Side** piece. **Left Side** pictured. Align back grooves in each component with back groove in Left Side. This will act as guiding system for Backs in later step. Attach each component to Left Side using Hex screws and Allen wrench. **(8) Hex screws** used in this step.



Step 2: Slide in **all Dividers** from back side. 15MM Dividers are screwed into Top and Bottom using Hex screws and Allen wrench. **(12) Hex screws** used in this step. Dividers alternate in thickness Hooks attached to Dividers face upwards towards top of Side. Refer to Fig.1 to left.

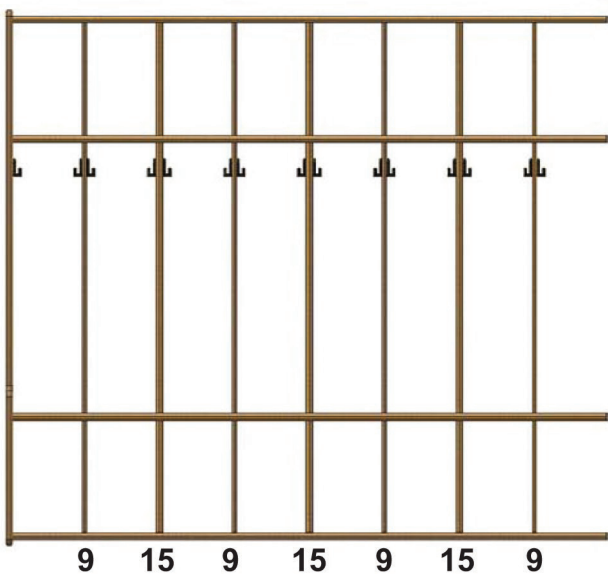
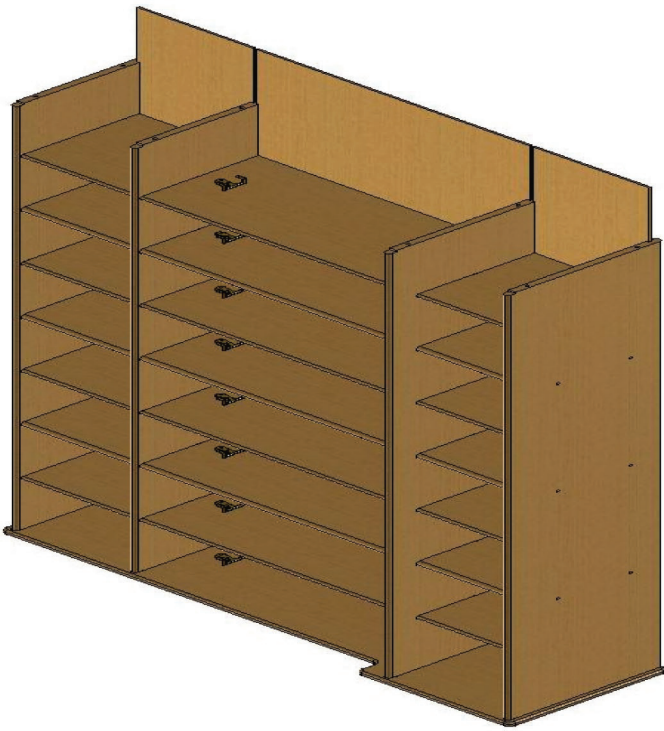
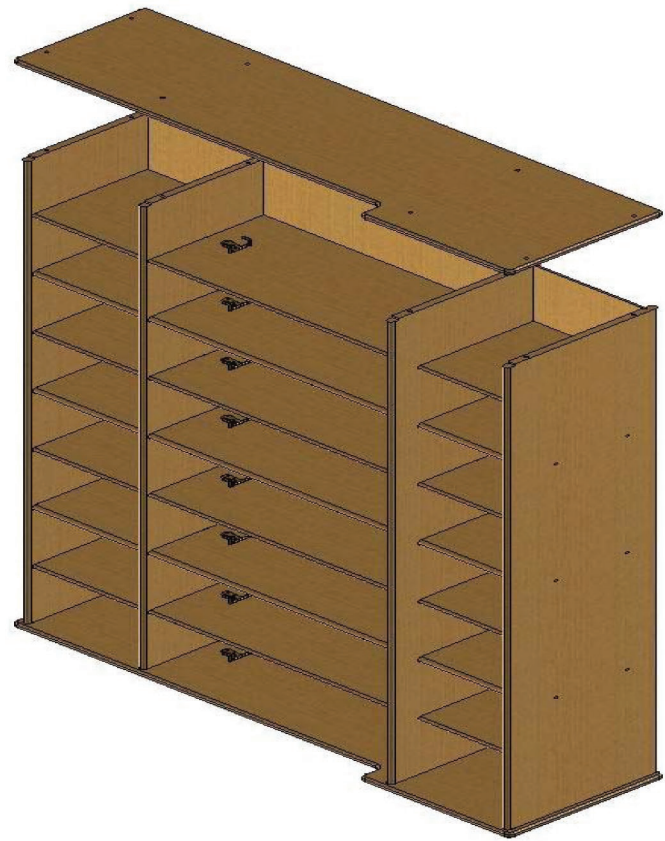


Figure 1

For assistance, call: Customer Service 1-800-247-8465



Step 3: Slide in **all Backs**. No hardware required in this step. Backs will stick out past end faces of Top and Shelves. Backs will sit in deeper back groove of Right SD assembled in next step.



Step 4: Attach second **Side** piece using **(8)** supplied Hex screws and Allen wrench. Overhang on backs past Top, Bottom, and shelves will fit into deeper 3/8" back groove of second Side piece.

Step 5: Set unit upright, resting edges of Sides on floor. Tighten all screws snugly. **DO NOT OVER-TIGHTEN. DO NOT DRILL.** Assembly is now complete.



For assistance, call: Customer Service 1-800-247-8465