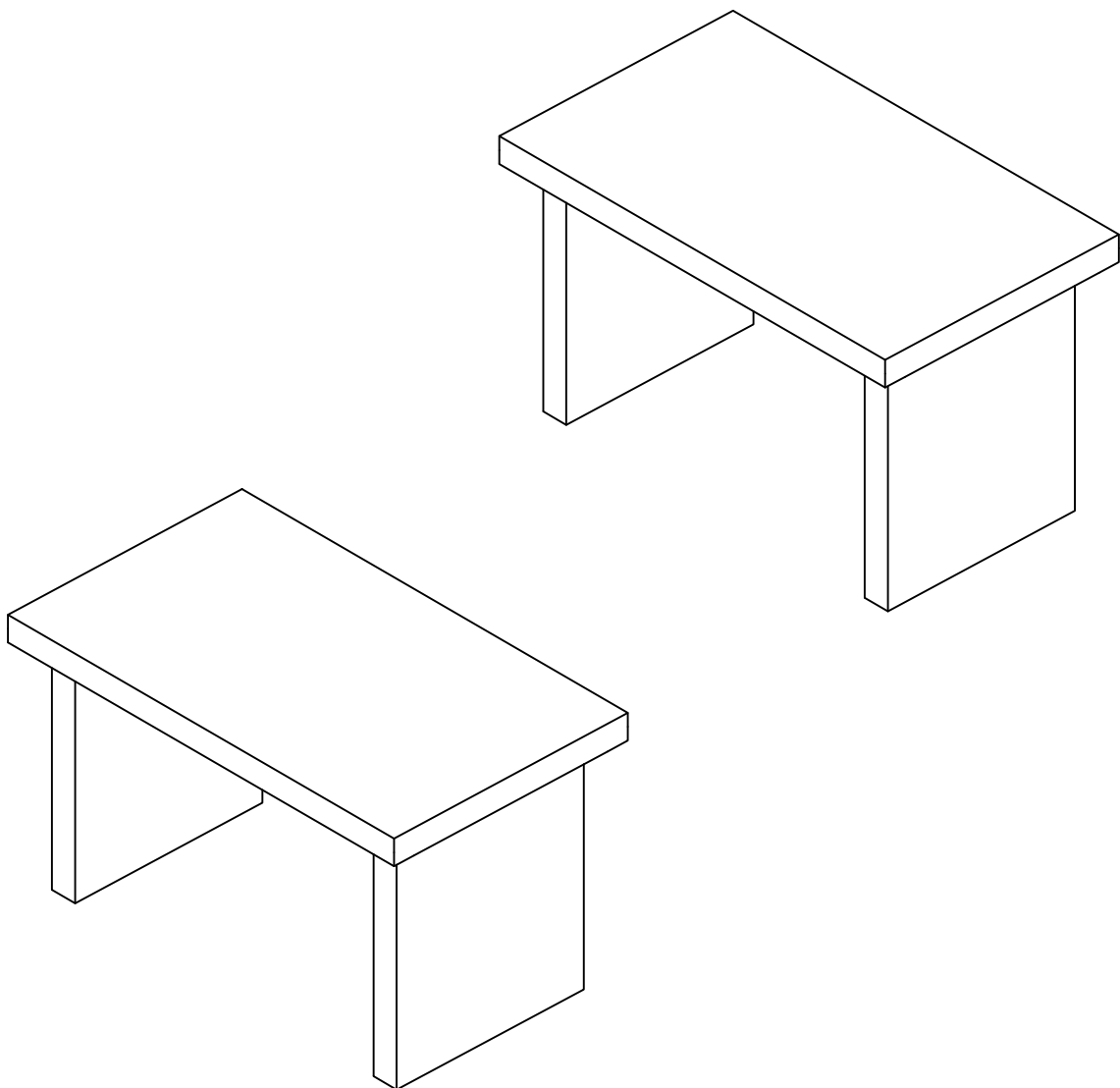
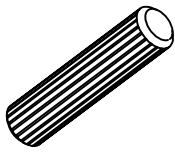


# COFFEE TABLE

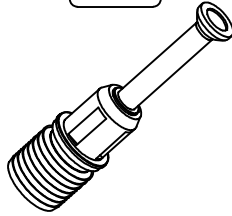
---



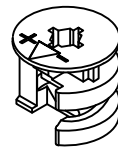
C03



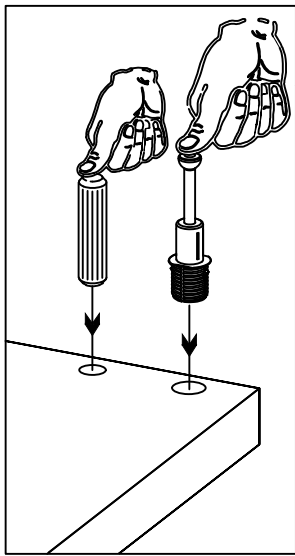
C02



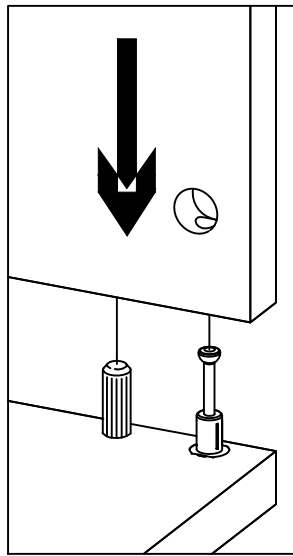
C01



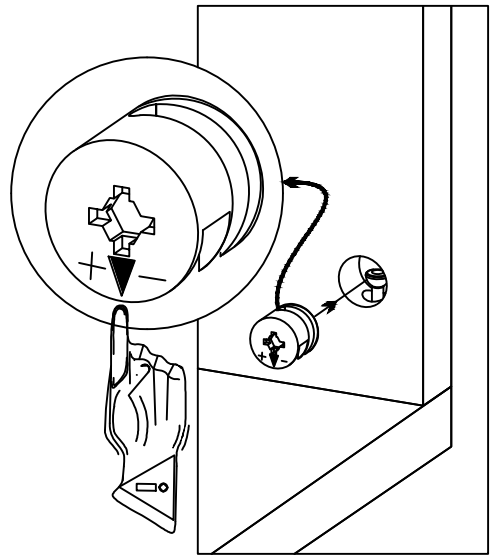
1



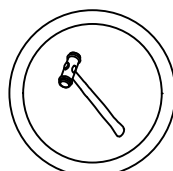
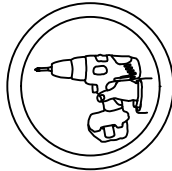
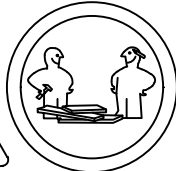
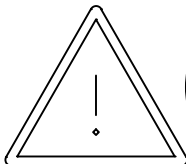
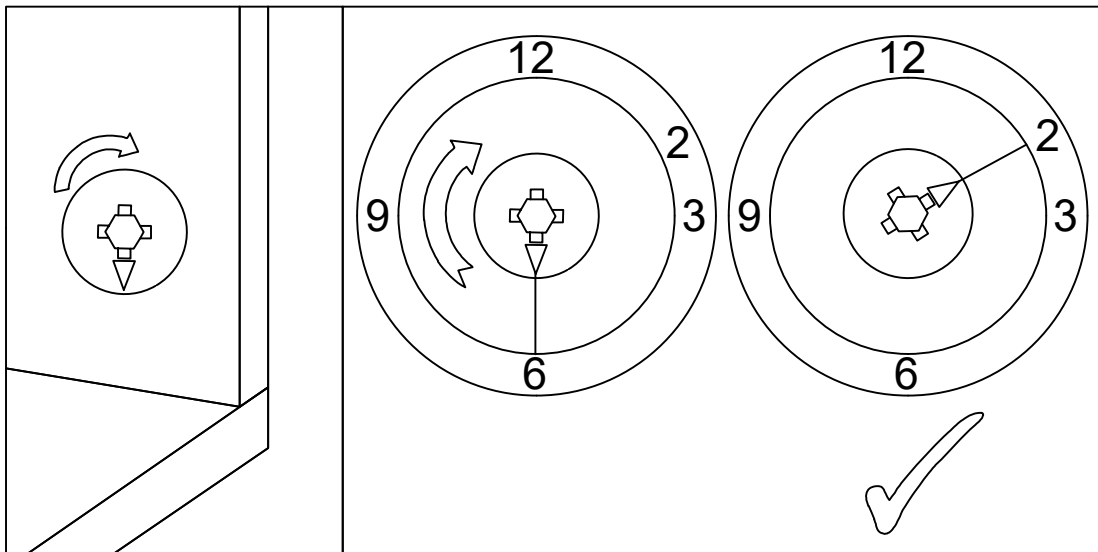
2

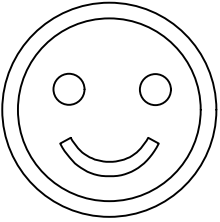


3



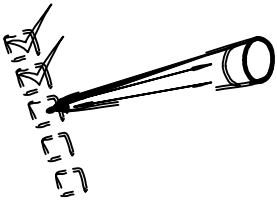
4



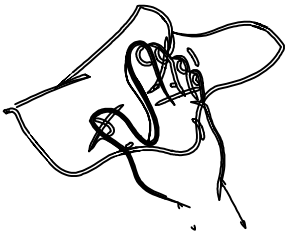


Dear Customer,

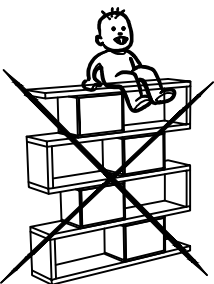
We design and produce our product for people to love and have fun with them as we do.  
The product you bought was subjected to all sorts of tests and control before sending out to you.



Before start assembling, please check the whole components and accessories according to the lists. If you bought more than one product, to prevent confusion be sure that you completed the first product. Then start the other product's assembling.

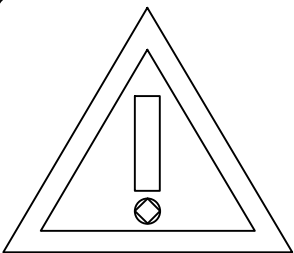


Before start assembling, please clean all the components with a damp cloth.  
Also for usual cleaning, this will be enough.



Do not use furniture for other purposes.  
If you would like to use it, please contact us for further questions.

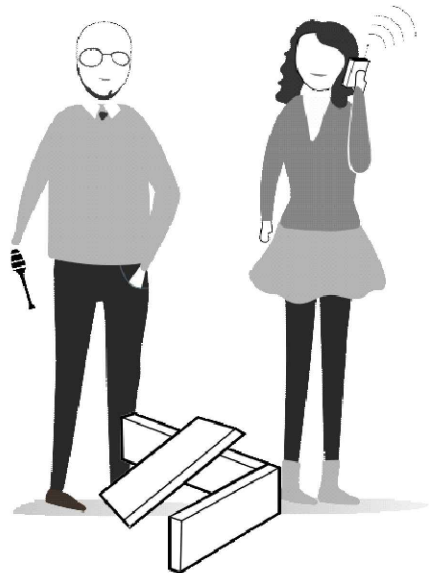
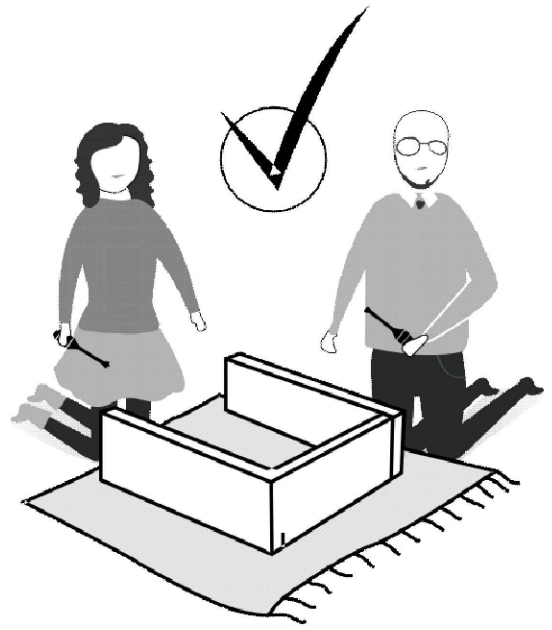
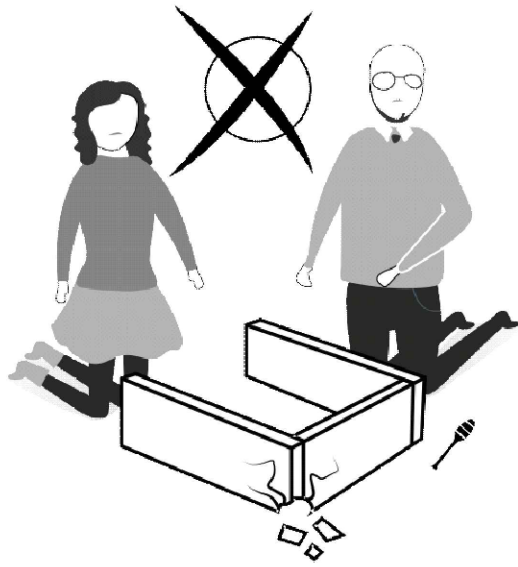
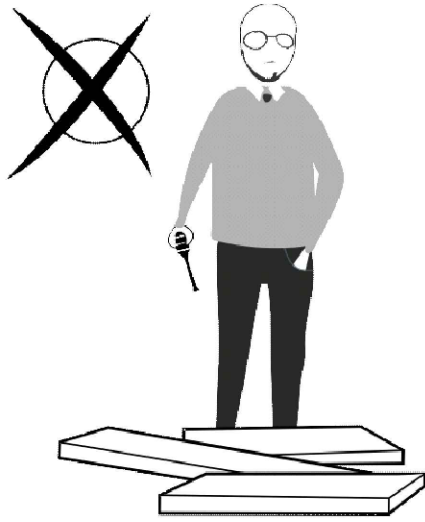
Do not directly contact your furniture with excessive heat, cold and humidity because the product can be affected.




## WARNING




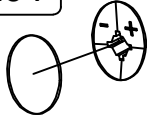
Serious or fatal crushing injuries can occur from furniture tip-over. To prevent this furniture from tipping over it must be permanently fixed to the wall with the included wall attachment devices.

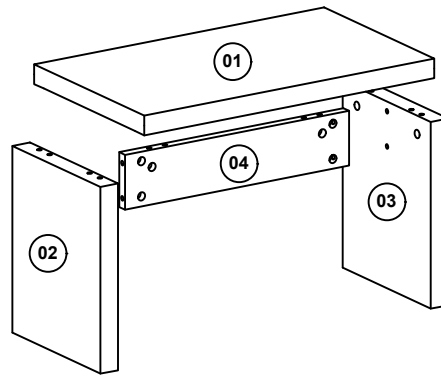
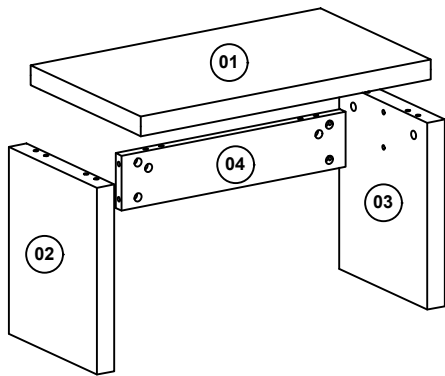
Fixing devices for the wall are not included since different wall materials require different types of fixing devices. Use fixing devices suitable for the walls in your home. For advice on suitable fixing systems, contact your local specialized dealer.

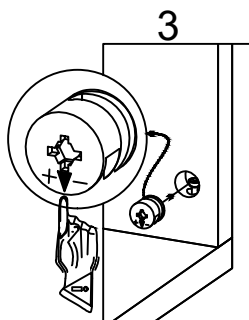
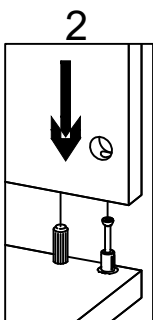
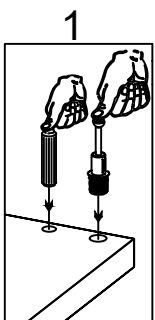
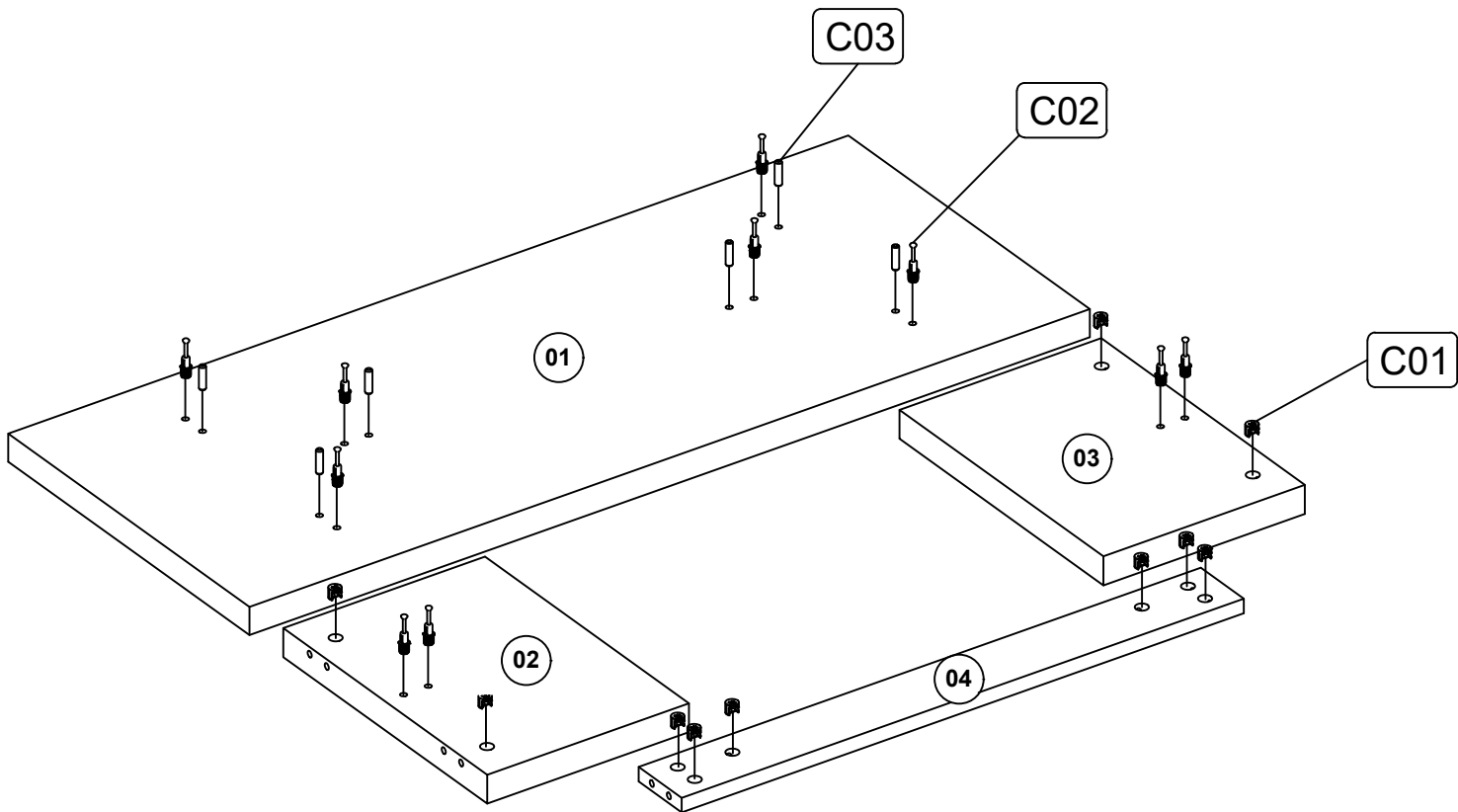
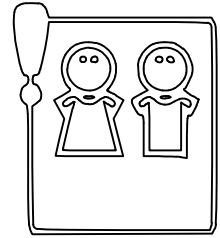




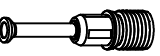
# ACCESSORY LIST

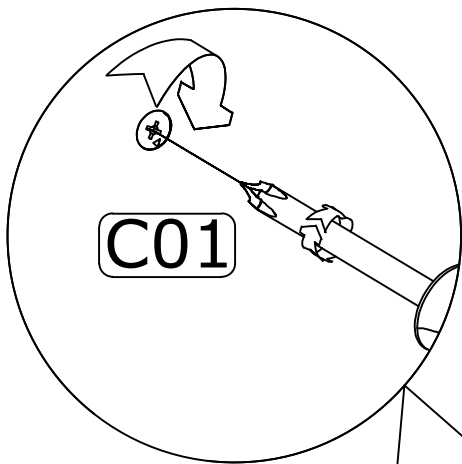
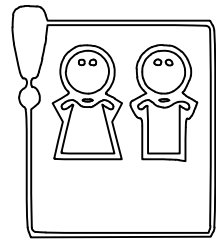
Follow the installation steps in the order as shown.  
Position the parts as shown in the installation guide steps. 

<p>C01</p>  <p>Minifix</p> <p>20x</p>	<p>C02</p>  <p>Minifix Mil</p> <p>20x</p>	<p>C03</p>  <p>Dowel</p> <p>12x</p>	<p>L01</p>  <p>L01</p> <p>20x</p>
--	--	--	--

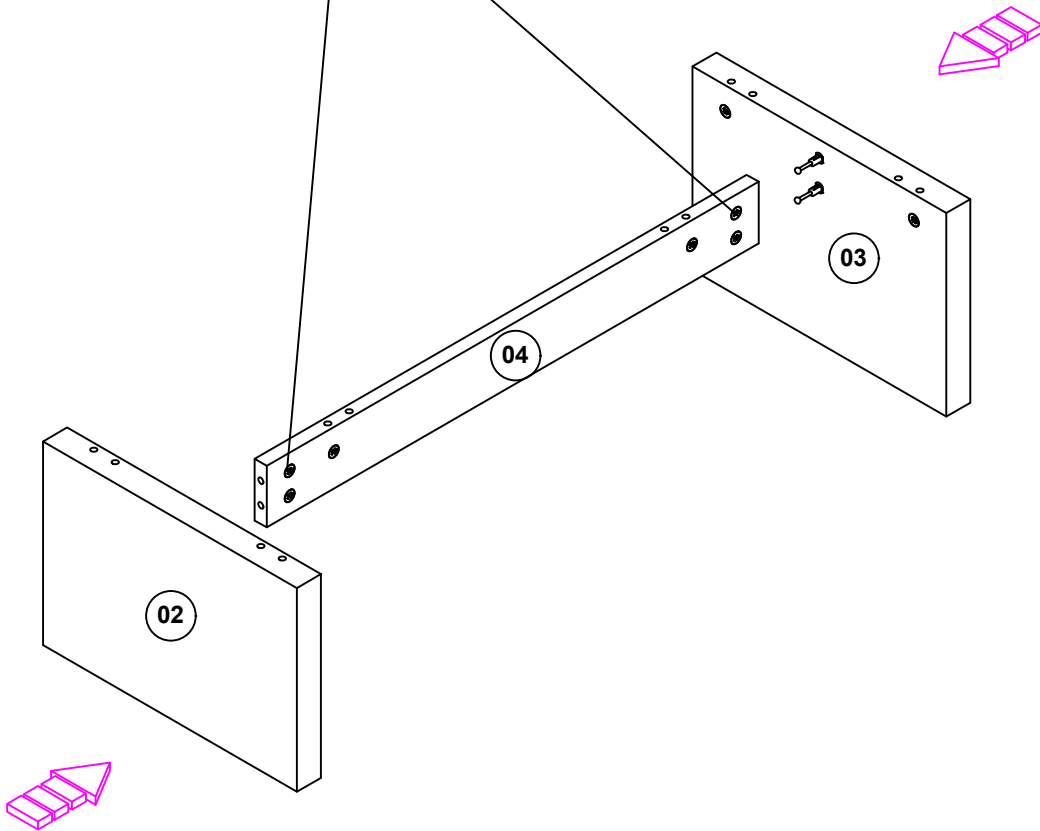




C03	Dowel		12x
C01	Minifix		20x
C02	Minifix Mil		20x



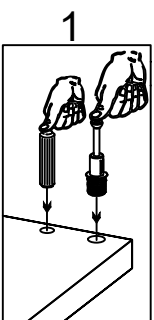
C01



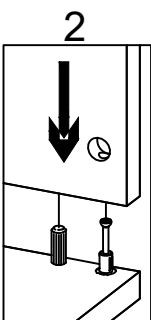
02

03

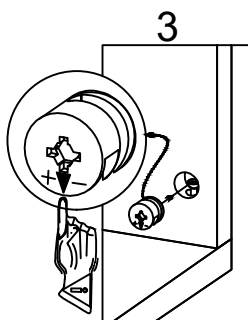
04






1

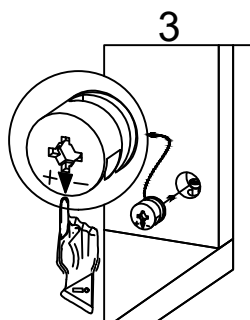
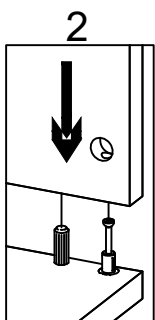
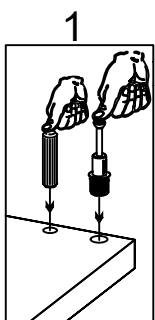
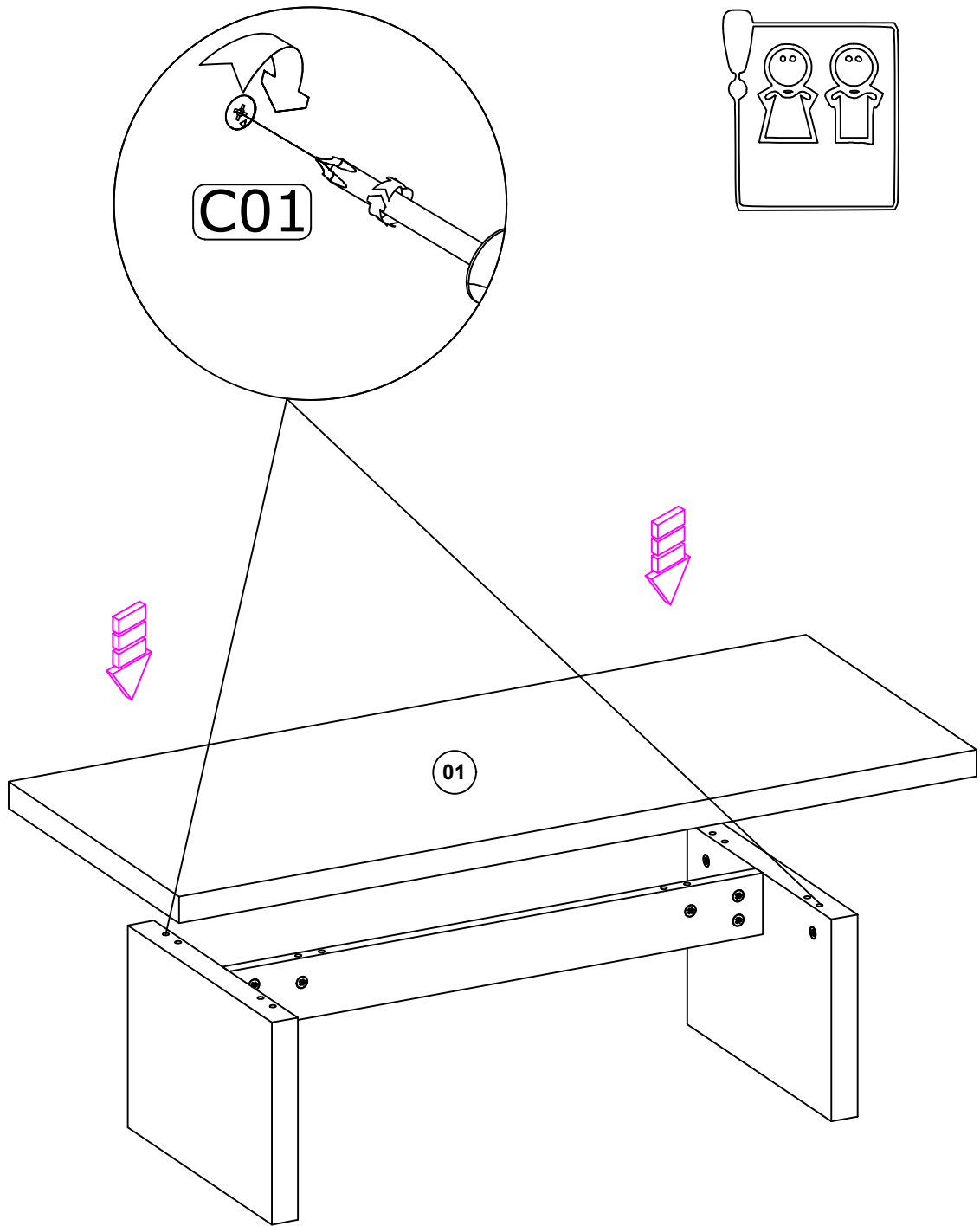




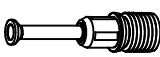
2



3

	C03	Dowel
		12x
C01	Minifix	C02
	20x	Minifix Mil
		
		20x



	C03	Dowel
		12x
C01	Minifix	20x
		
	C02	Minifix Mil
		20x

