

INSTALLATION

Product Manual

Version: 210274-00-24A-PF



IMPORTANT INFORMATION!

please read the entire manual before starting to assemble and/or using this product. follow the manual thoroughly and keep it for further reference.



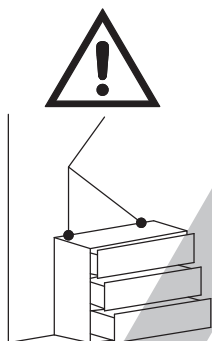
AVOID SCRATCHES!

In order to avoid scratching this furniture should be assembled on a soft layer-could be a rug.



IMPROVE EFFICIENCY !

Try to find a partner to install with you, which can speed up the installation efficiency and shorten the time.



ANTI-TOPPLE WARNING !

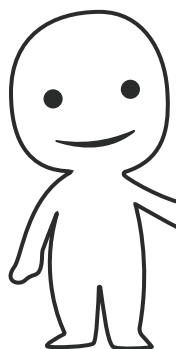
Overturned furniture can cause serious or fatal crush injuries. To prevent tipping over, be sure to use the wall attachment, if not included with this product. Please purchase the wall attachment that fit your wall. If unsure, seek professional advice. Please read and follow each step of the instructions carefully.

IMPORTANT !

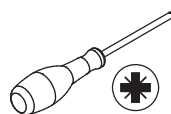
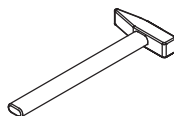
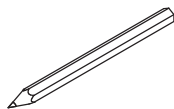
It is important that any product which is assembled using any kind of screw is re-tightened 2 weeks after assembly, and once every 3 months - in order to assure stability through-out the lifespan of the product.

For regular maintenance and cleaning of the product, for the frame, please use a rag dipped in neutral detergent to fully wipe it, and then dry it with a clean rag. For glass materials, wipe with a rag dampened with water glass cleaner, and then dry with a dry rag.

Do not use an electric screwdriver, and do not use too much force when installing, because the board is easy to break.

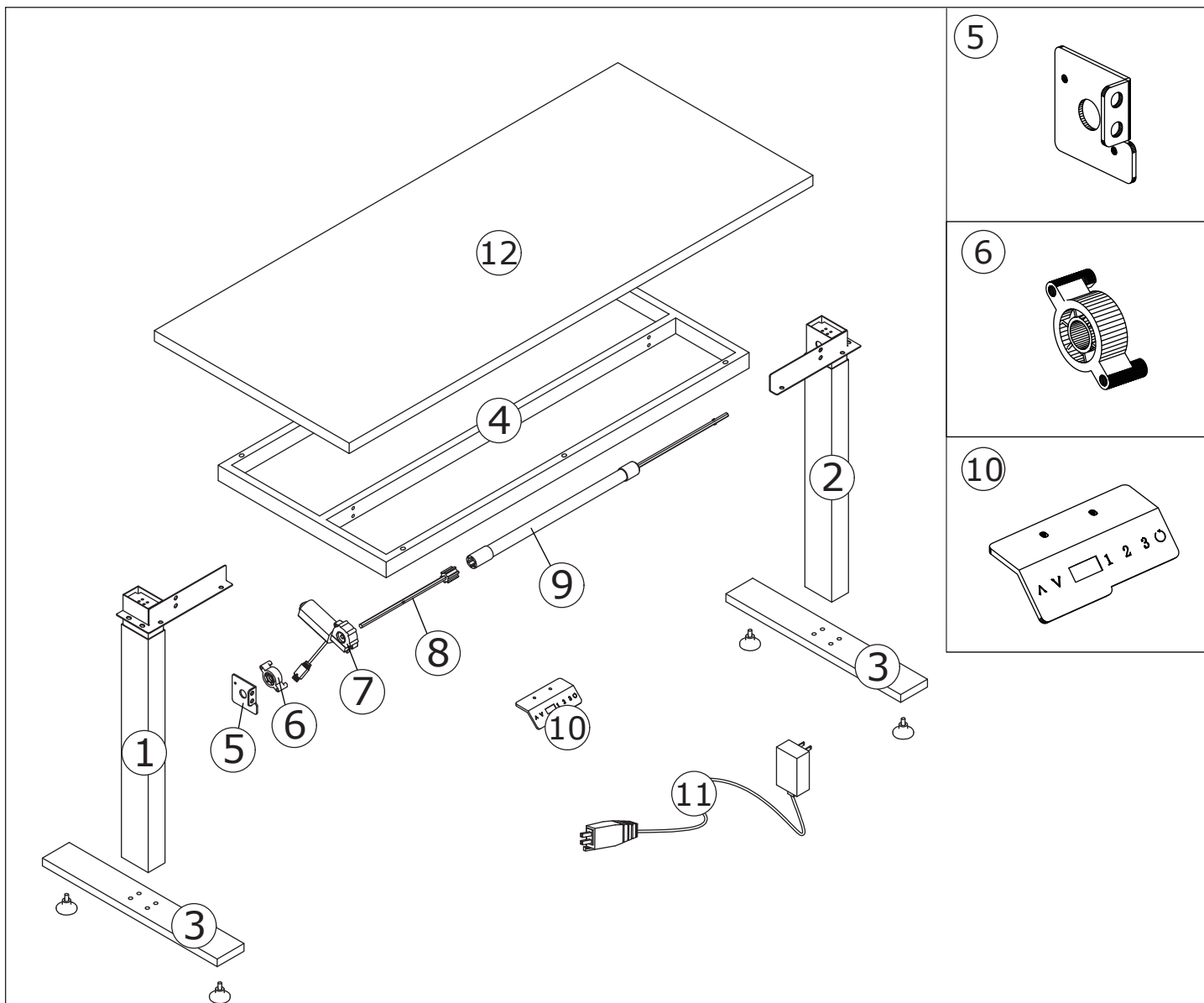


Please prepare the following tools

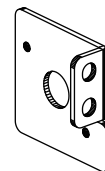


When installing, please carefully confirm whether each screw corresponds to the manual, accessories with similar shapes can be distinguished by size

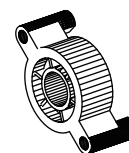
<p>A x 44</p>  <p>M5 x 42 mm</p>	<p>B x 44</p>  <p>Ø15 x 10 mm</p>	<p>C x 36</p>  <p>M3.5 x 12 mm</p>	<p>D x 36</p>  <p>M3.5 x 14 mm</p>	<p>E x 4</p>  <p>Ø7 x 9 mm</p>
<p>F x 8</p>  <p>M5 x 40 mm</p>	<p>G x 2</p>  <p>D28</p>	<p>H x 4</p>  <p>M8 x 45 mm</p>	<p>I x 4</p>  <p>DW</p>	<p>J x 2</p>  <p>M4 x 45 mm</p>
<p>K x 2</p>  <p>M4</p>	<p>L x 2</p>  <p>Ø14 x 5 x 1 mm</p>	<p>M x 8</p>  <p>M6 x 12 mm</p>	<p>N x 4</p>  <p>M6 x 30 mm</p>	<p>O x 6</p>  <p>M6 x 50 mm</p>
<p>P x 8</p>  <p>M8 x 30 mm</p>	<p>Q x 4</p>  <p>M6</p>	<p>x 1</p>  <p>10mm 12mm</p>	<p>x 1</p>  <p>M4</p>	<p>x 1</p>  <p>#4</p>
<p>x 1</p>  <p>#5</p>				



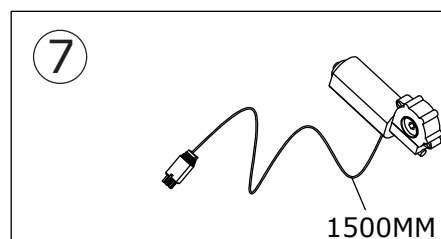
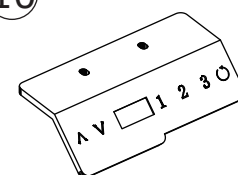
5



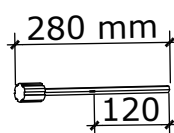
6



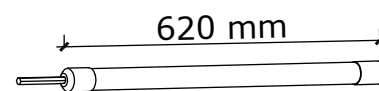
10



8



9

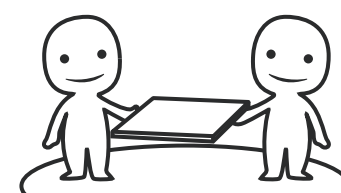


⚠ WARNING

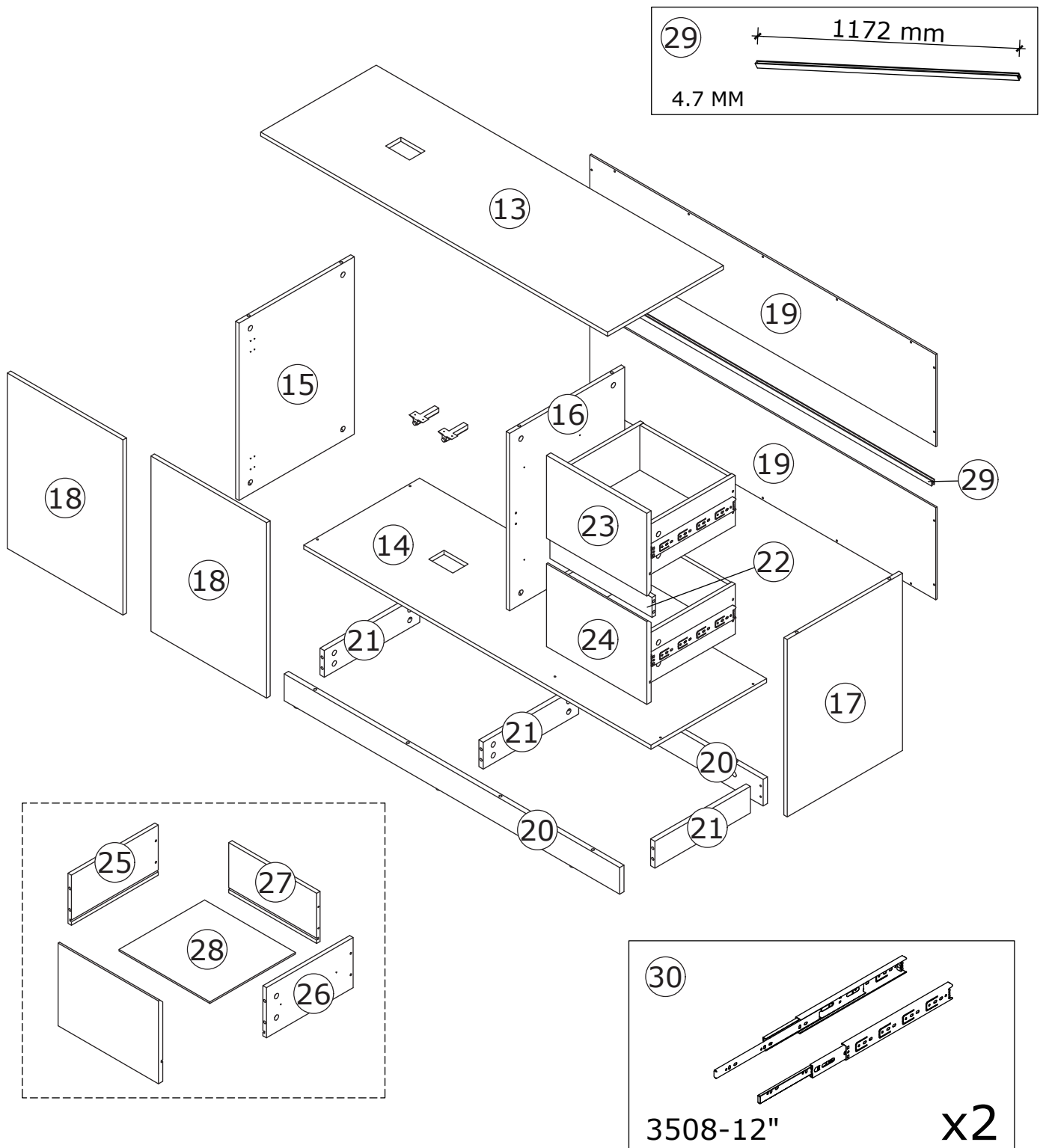
Children have died from furniture tipover. To reduce the risk of furniture tipover:

- ALWAYS install Anti-tip device provided.
- NEVER put a TV on this product.
- NEVER allow children to stand, climb or hang on drawers, doors, or shelves.
- NEVER open more than one drawer at a time.
- Place heaviest items in the lowest drawers.

*This is a permanent label.
Do not remove!*



ASSEMBLED BY 2 ADULTS



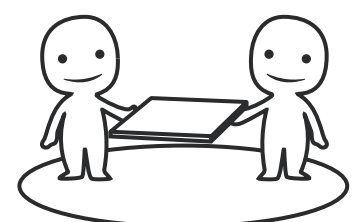
⚠ WARNING



Children have died from furniture tipover. To reduce the risk of furniture tipover:

- ALWAYS install Anti-tip device provided.
- NEVER put a TV on this product.
- NEVER allow children to stand, climb or hang on drawers, doors, or shelves.
- NEVER open more than one drawer at a time.
- Place heaviest items in the lowest drawers.

*This is a permanent label.
Do not remove!*

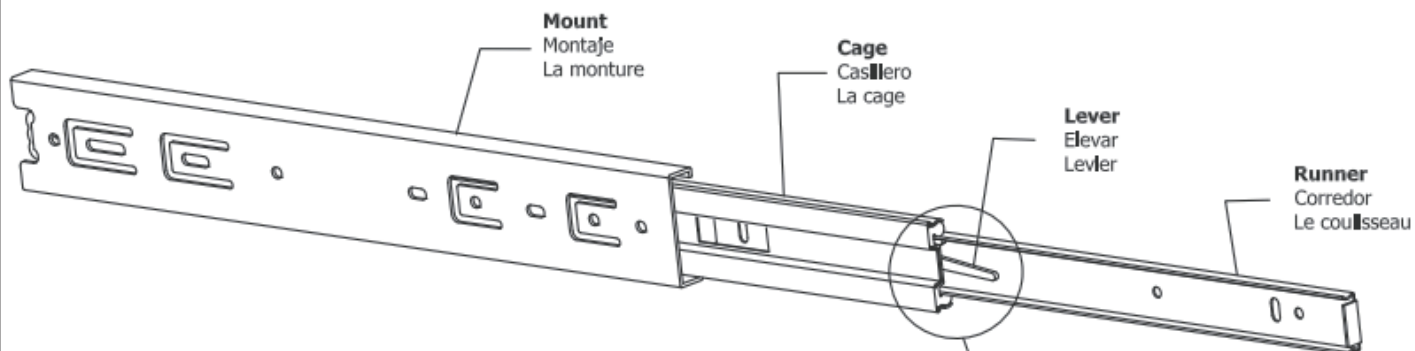


ASSEMBLED BY 2 ADULTS

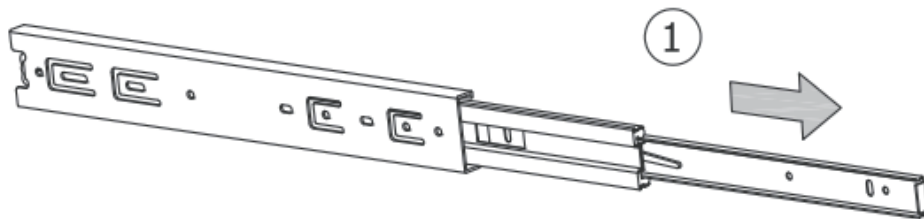
Slides Must Be Separated Before Assembly.
After Separated, Set Aside Until Needed for Assembly.

Las diapositivas deben separarse antes del montaje.
Después de la separación, déjelo a un lado hasta que sea necesario.

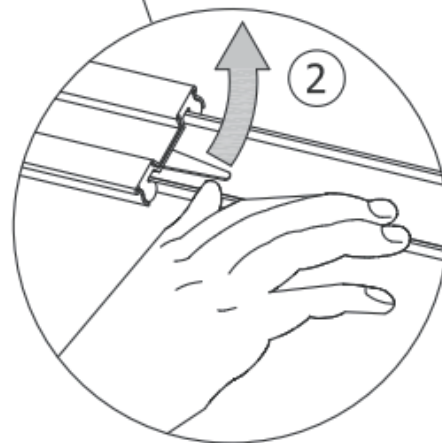
Les glissières doivent être séparées avant l'assemblage.
Après la séparation, mettez de côté jusqu'au moment de l'assemblage.



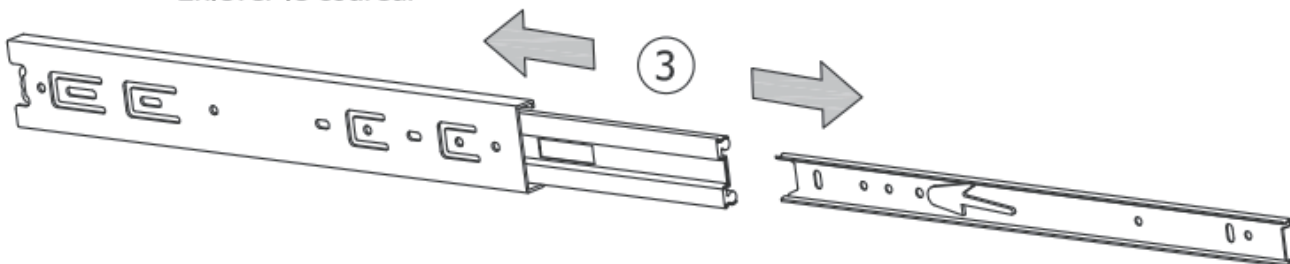
STEP 1: Extend Slide
Extender la diapositiva
Extendre la diapositive



STEP 2: Push Lever UP
Empujar hacia arriba
Lever le levier



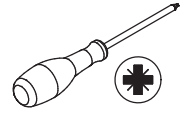
STEP 3: Remove Runner
Quitar el corredor
Enlever le coureur



1

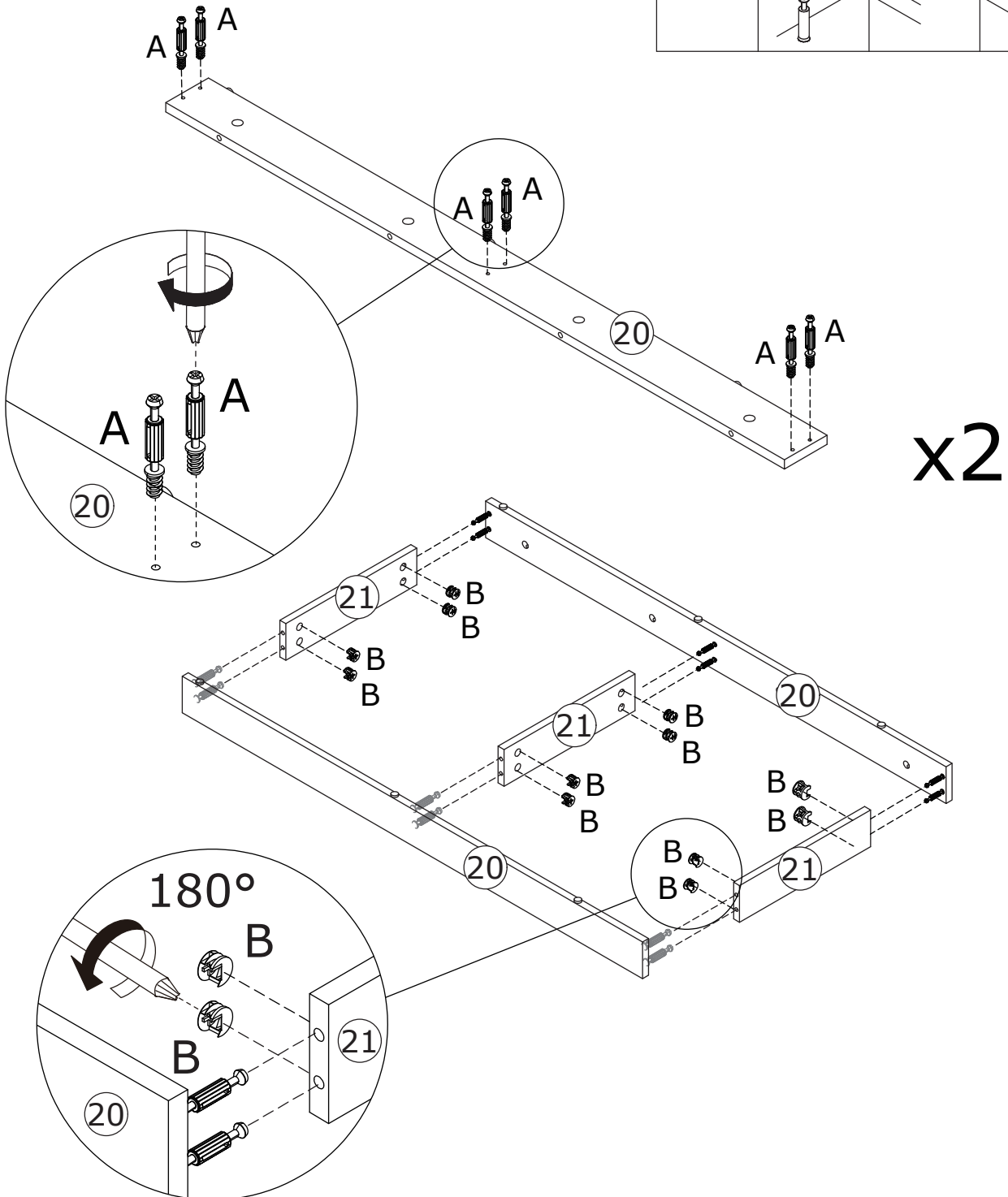
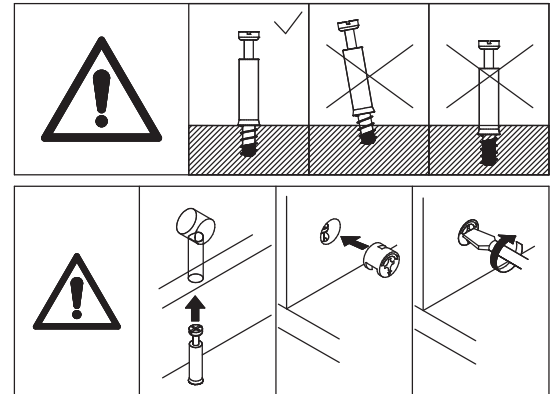
A x 12
M5 x 42 mm

B x 12
Ø 15 x 10 mm

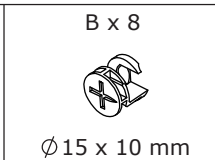
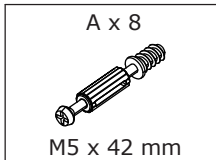


Screw eccentric rod(A) into panel 20 at first.

Connect panel 20 to panel 21, add cam lock(B) into panel 21 and turn clockwise to tighten as shown.

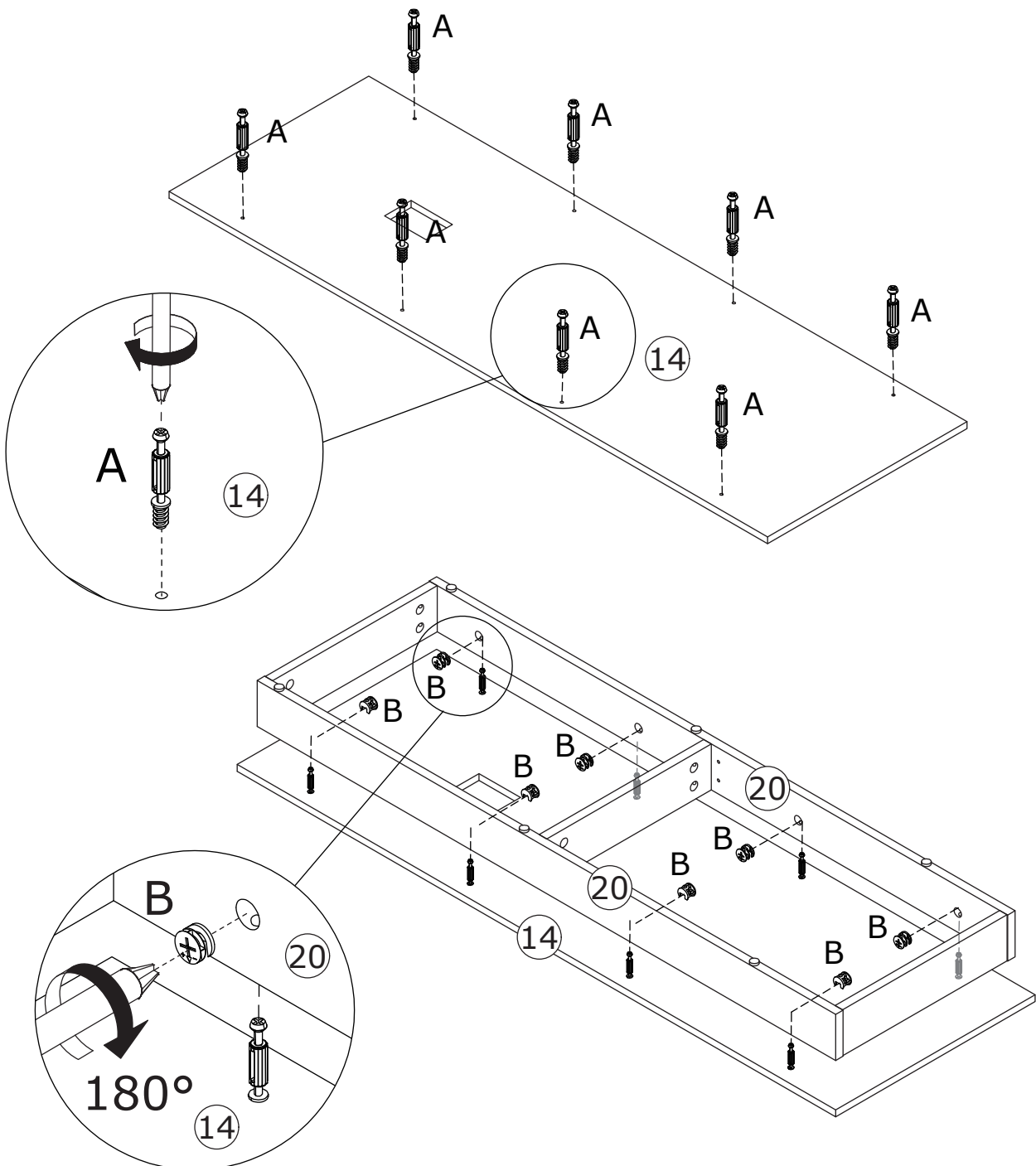
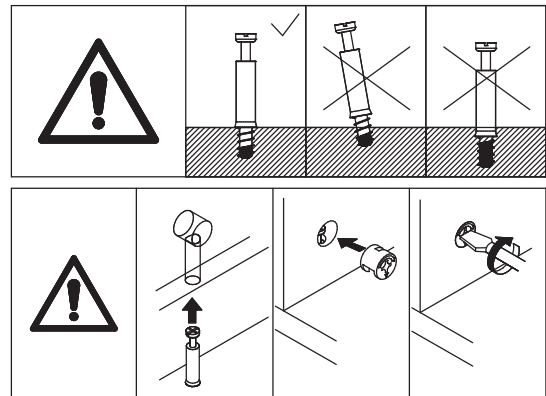


2



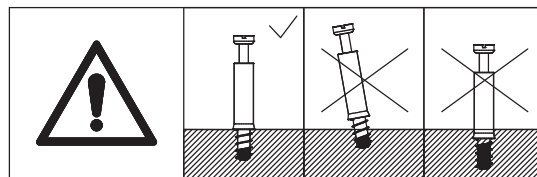
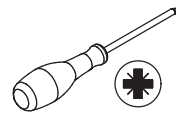
Screw eccentric rod(A) into panel 14 at first.

Attach the component to panel 14, add cam lock(B) into panel 20 and turn clockwise to tighten as shown.

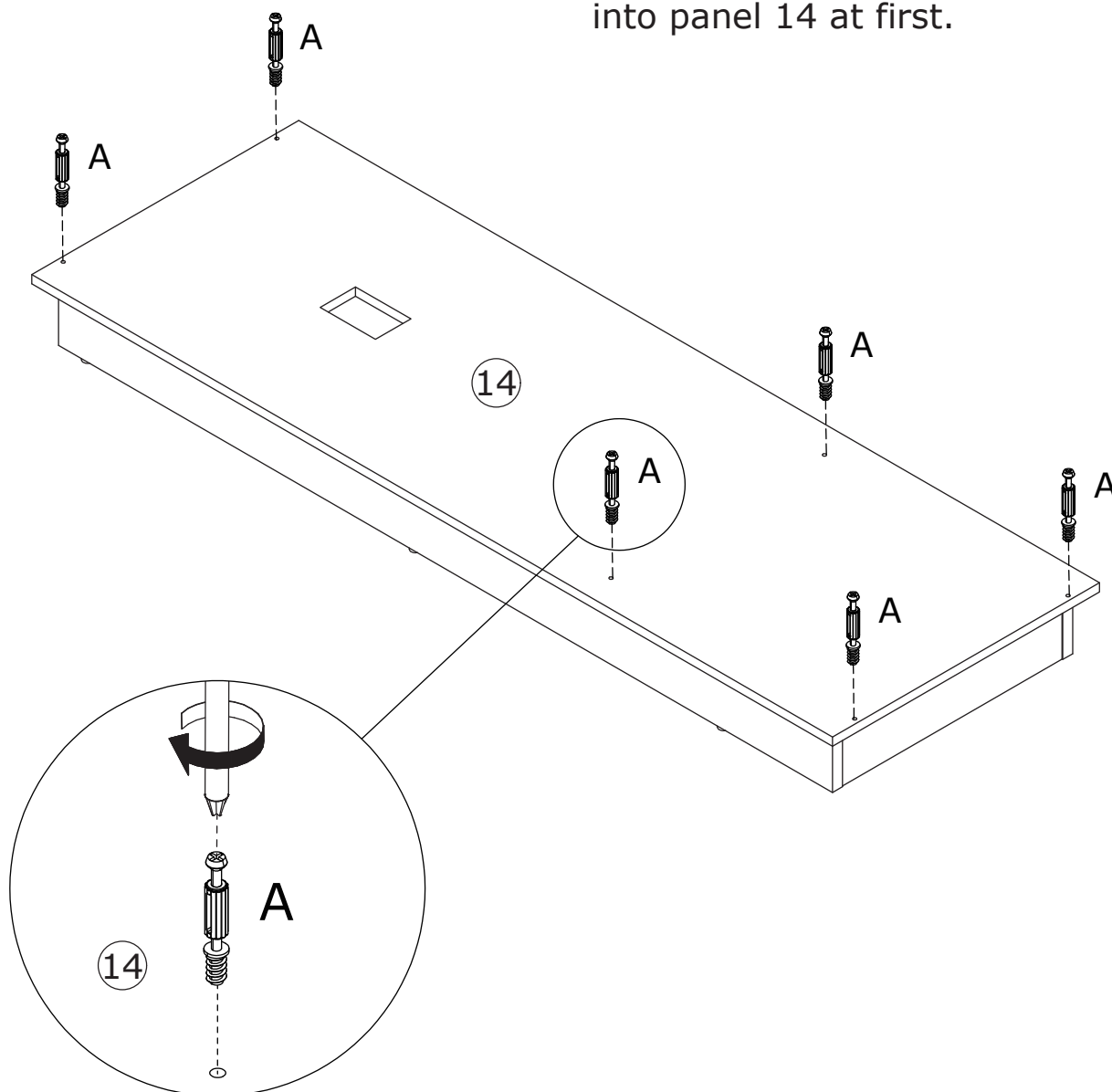


3

A x 6
M5 x 42 mm



Screw eccentric rod(A)
into panel 14 at first.

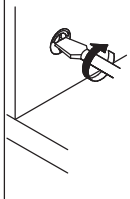
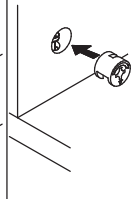
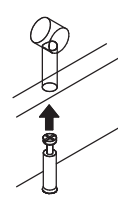
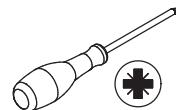


4

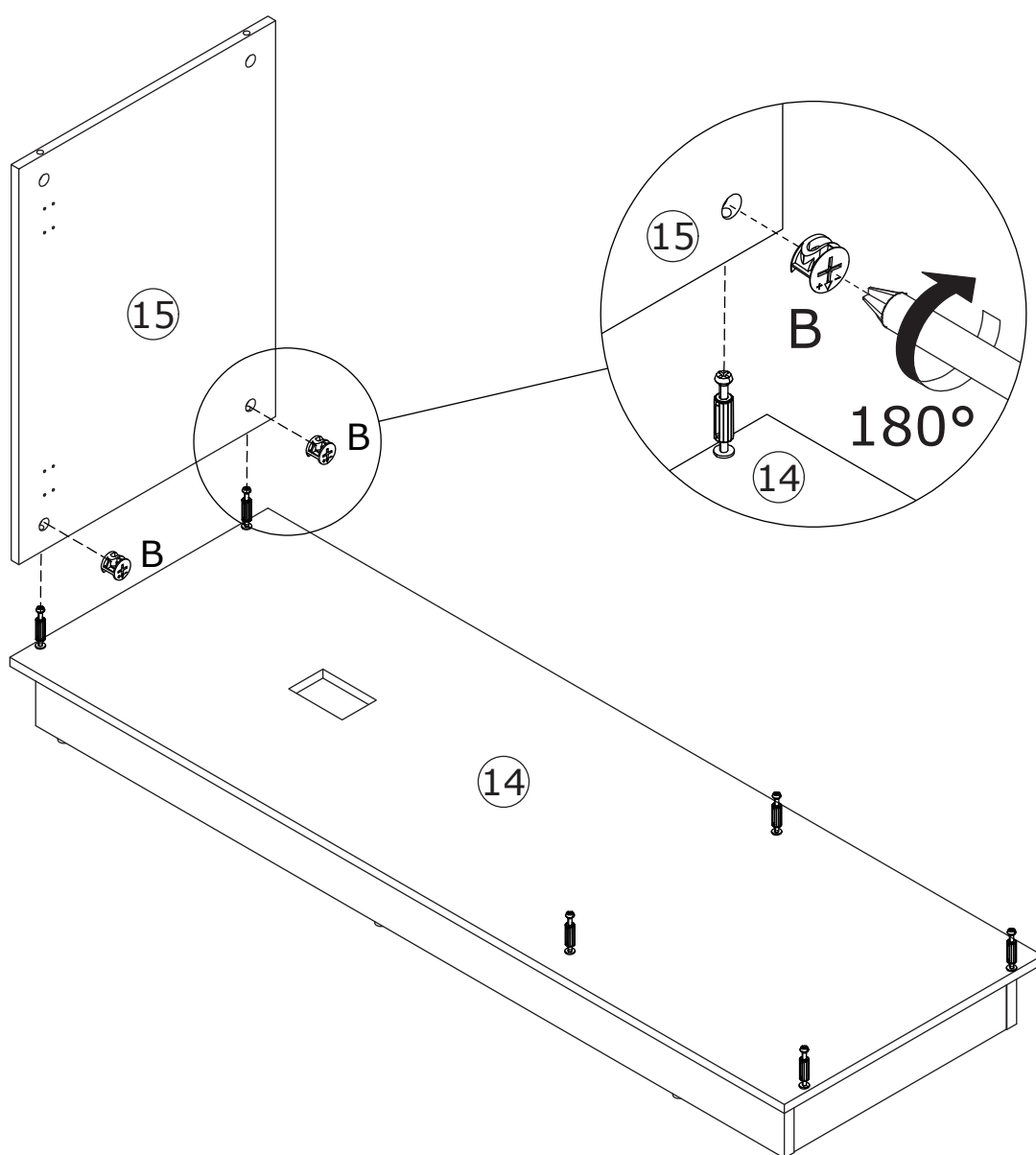
B x 2



Ø 15 x 10 mm



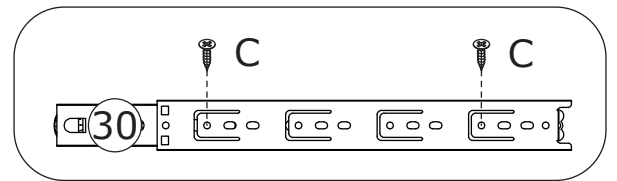
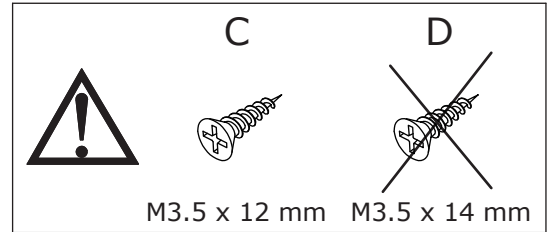
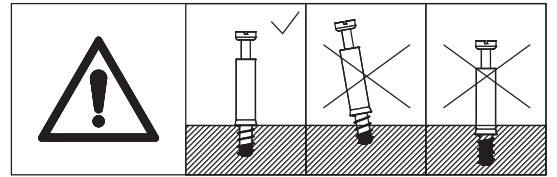
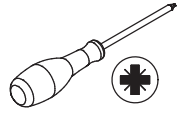
Attach panel 15 to panel 14, add cam lock(B) into panel 15 and turn clockwise to tighten as shown.



5

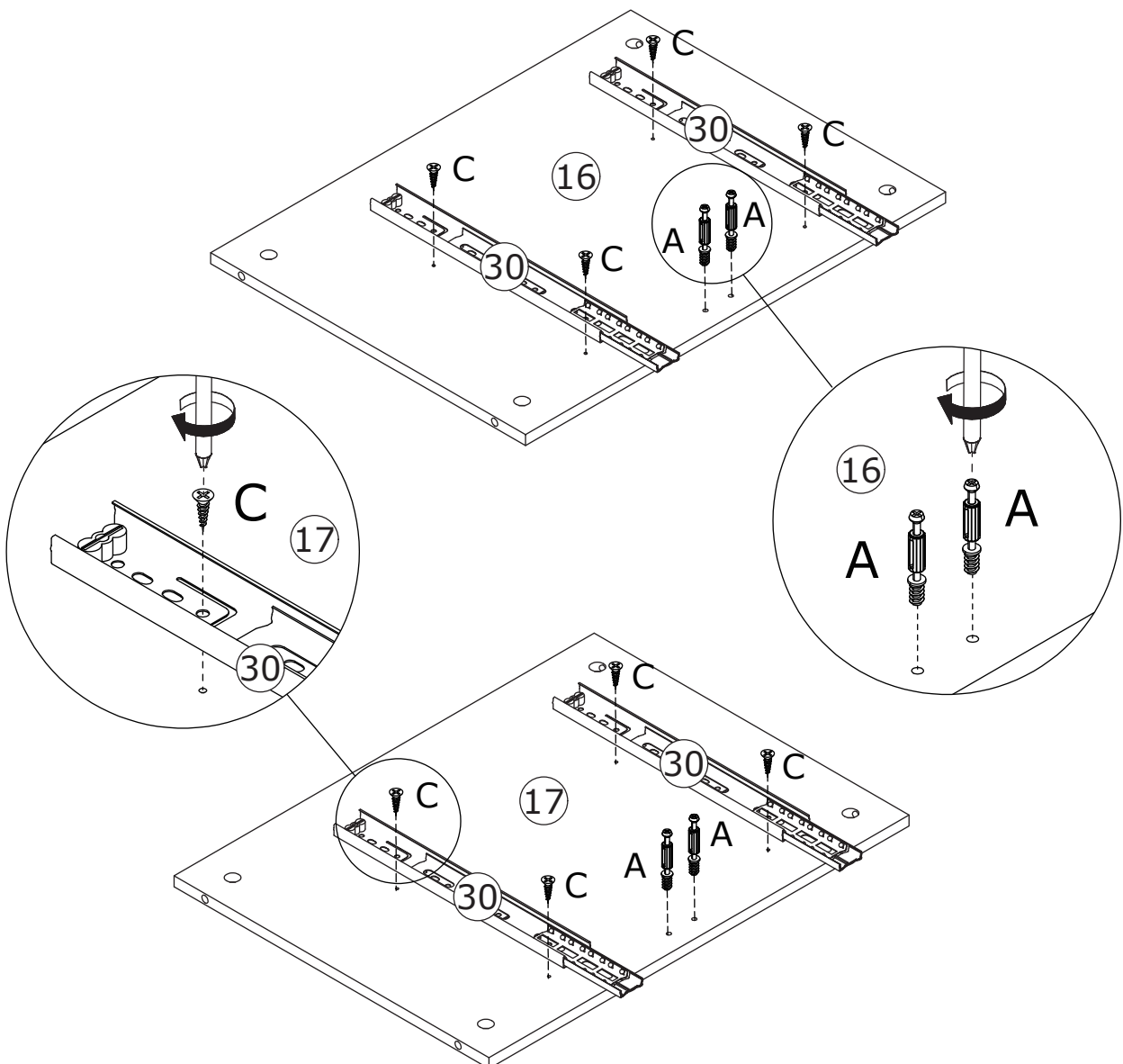
A x 4
M5 x 42 mm

C x 8
M3.5 x 12 mm



**Separate slide into two parts
at first.(Page 3)**

Fix rail 30 to panel 16 and 17
with screw(C) as shown.
Screw eccentric rod(A) into.

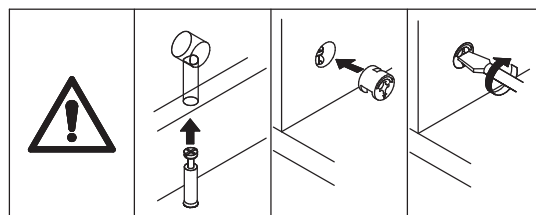


6

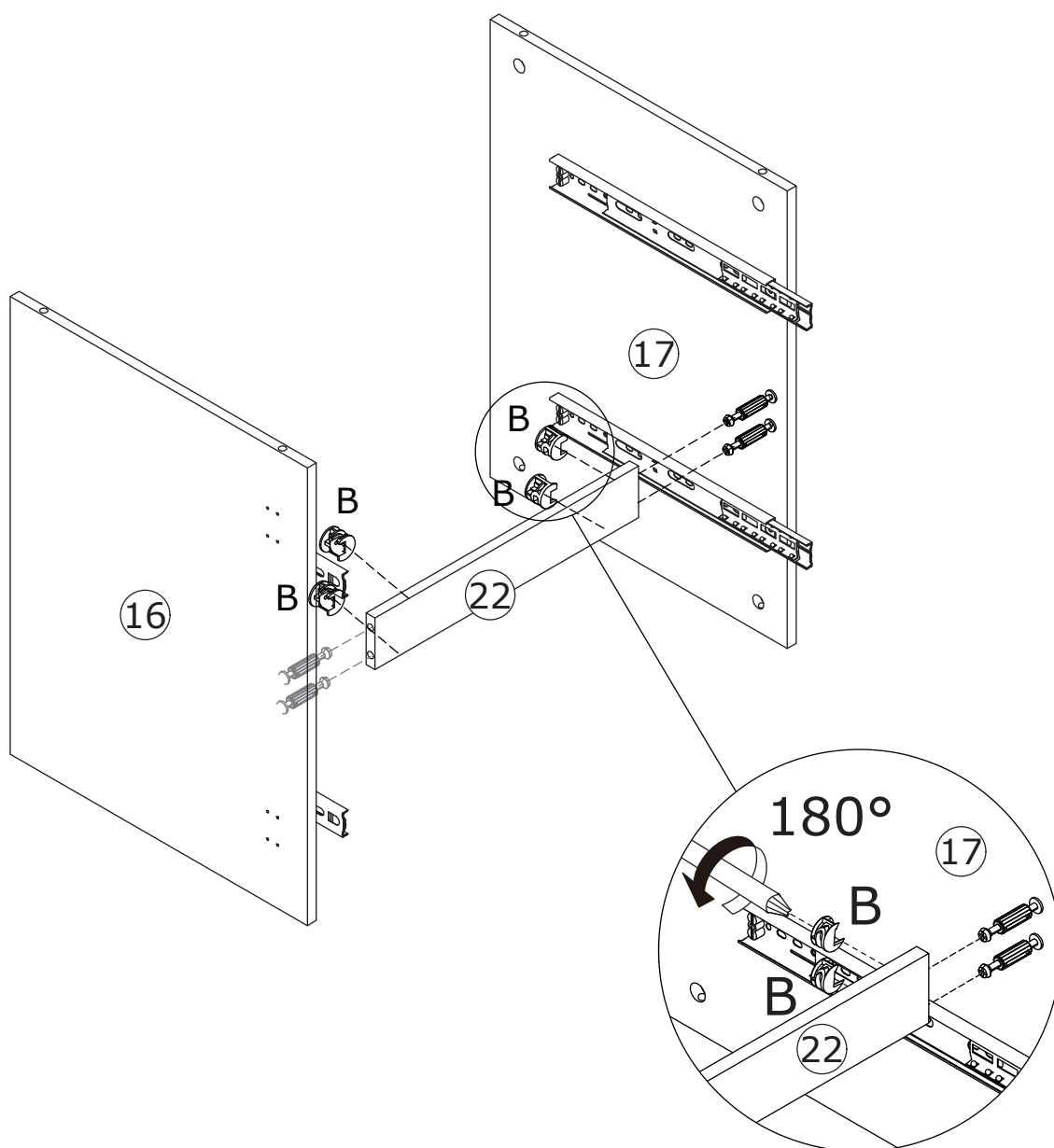
B x 4




Ø15 x 10 mm

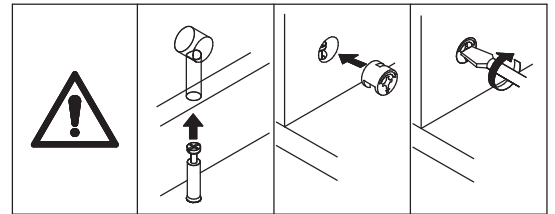
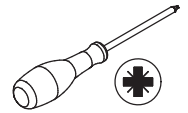


Connect panel 16 and 17 to panel 22,
add cam lock(B) into panel 22 and
turn clockwise to tighten as shown.

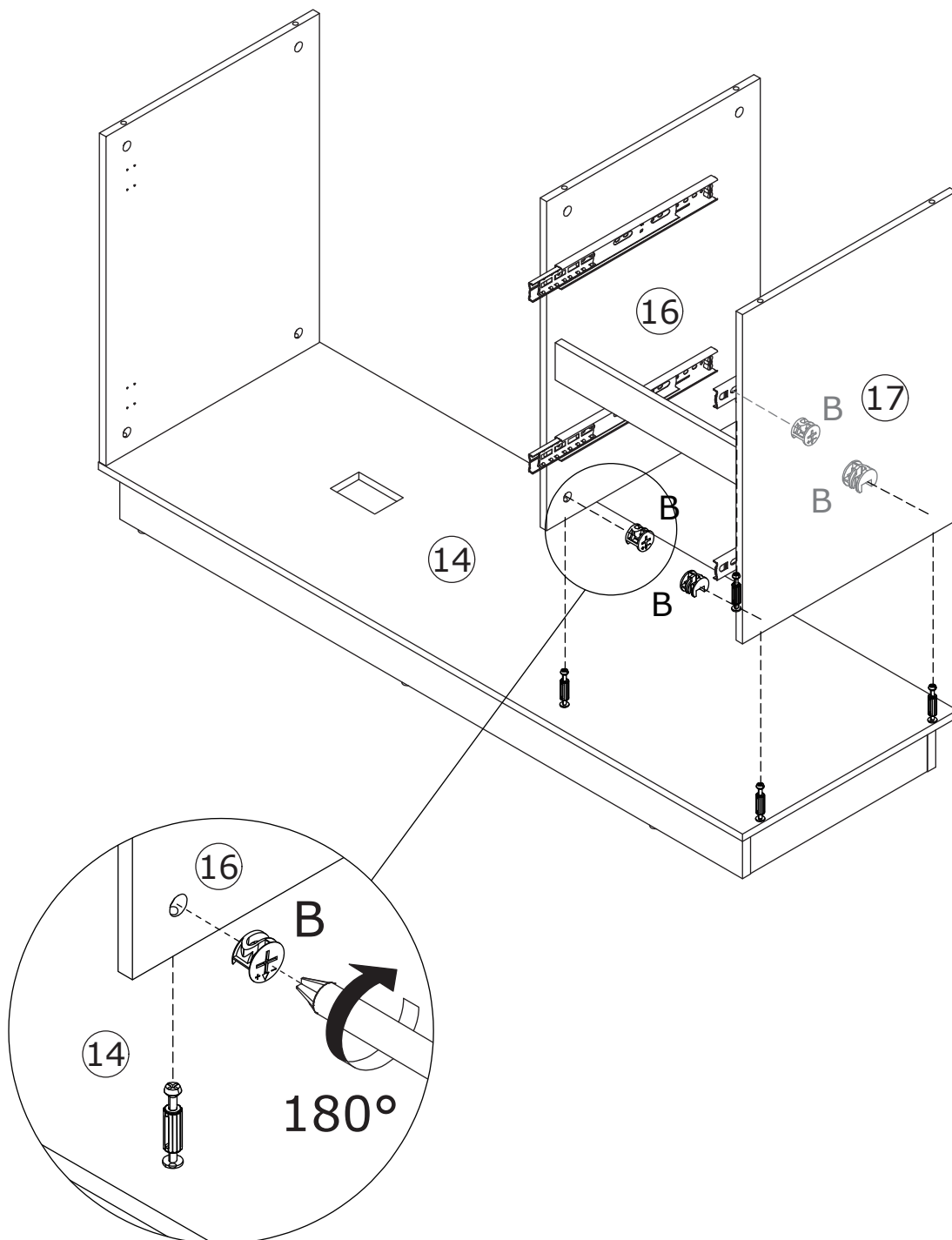


7

B x 4

 Ø15 x 10 mm

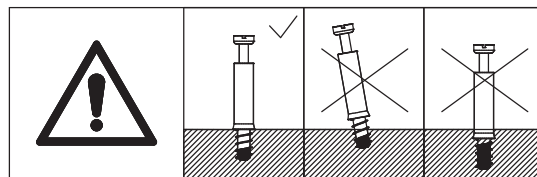
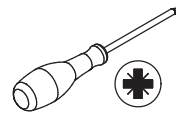


Attach panel 16 and 17 to panel 14,
 add cam lock(B) into panel 16, 17 and
 turn clockwise to tighten as shown.

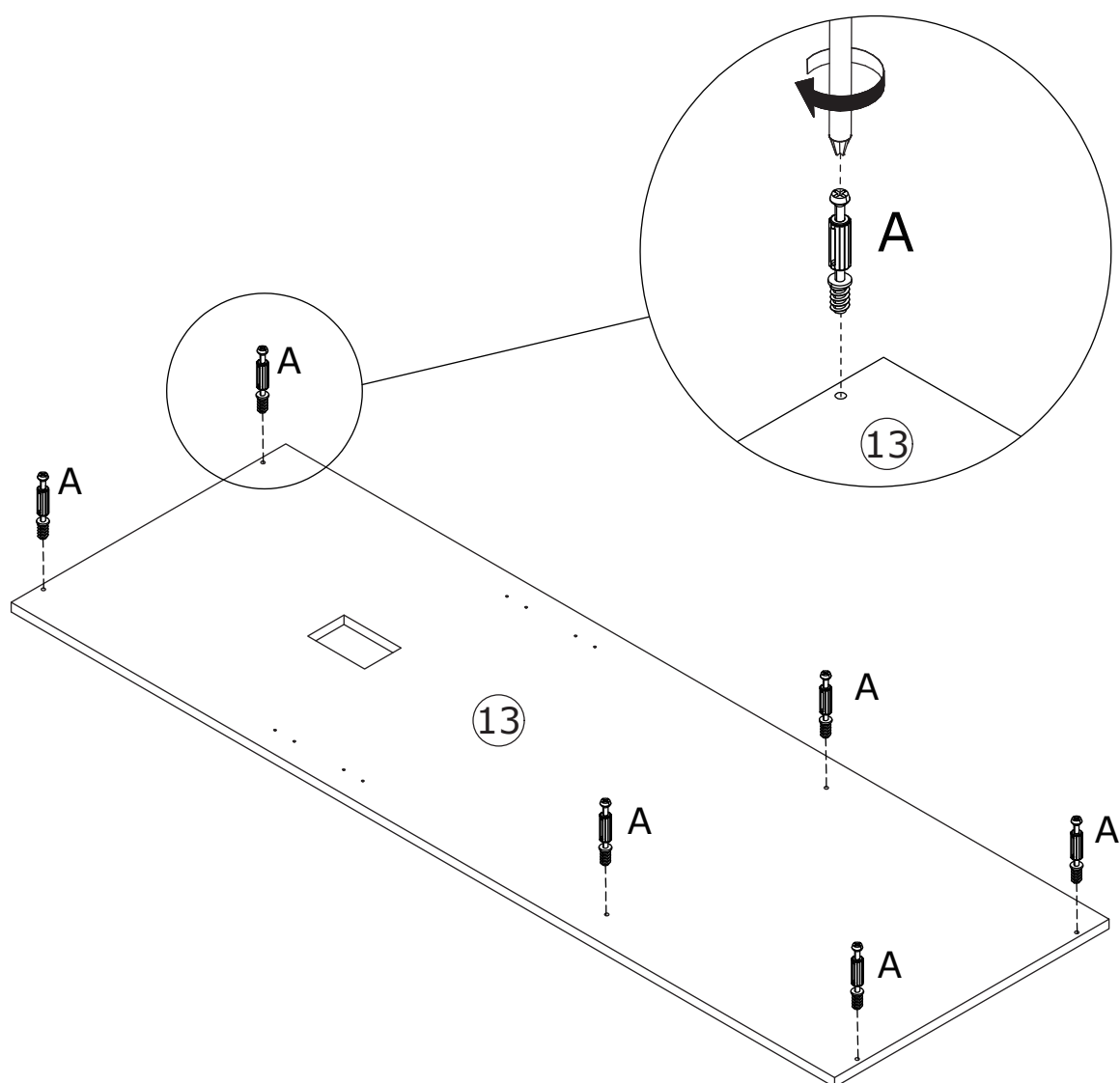


8

A x 6
M5 x 42 mm



Screw eccentric rod(A)
into panel 13 at first.

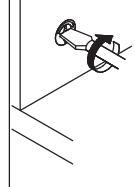
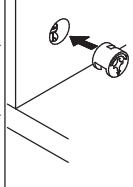
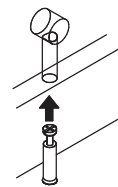
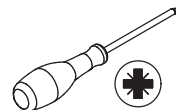


9

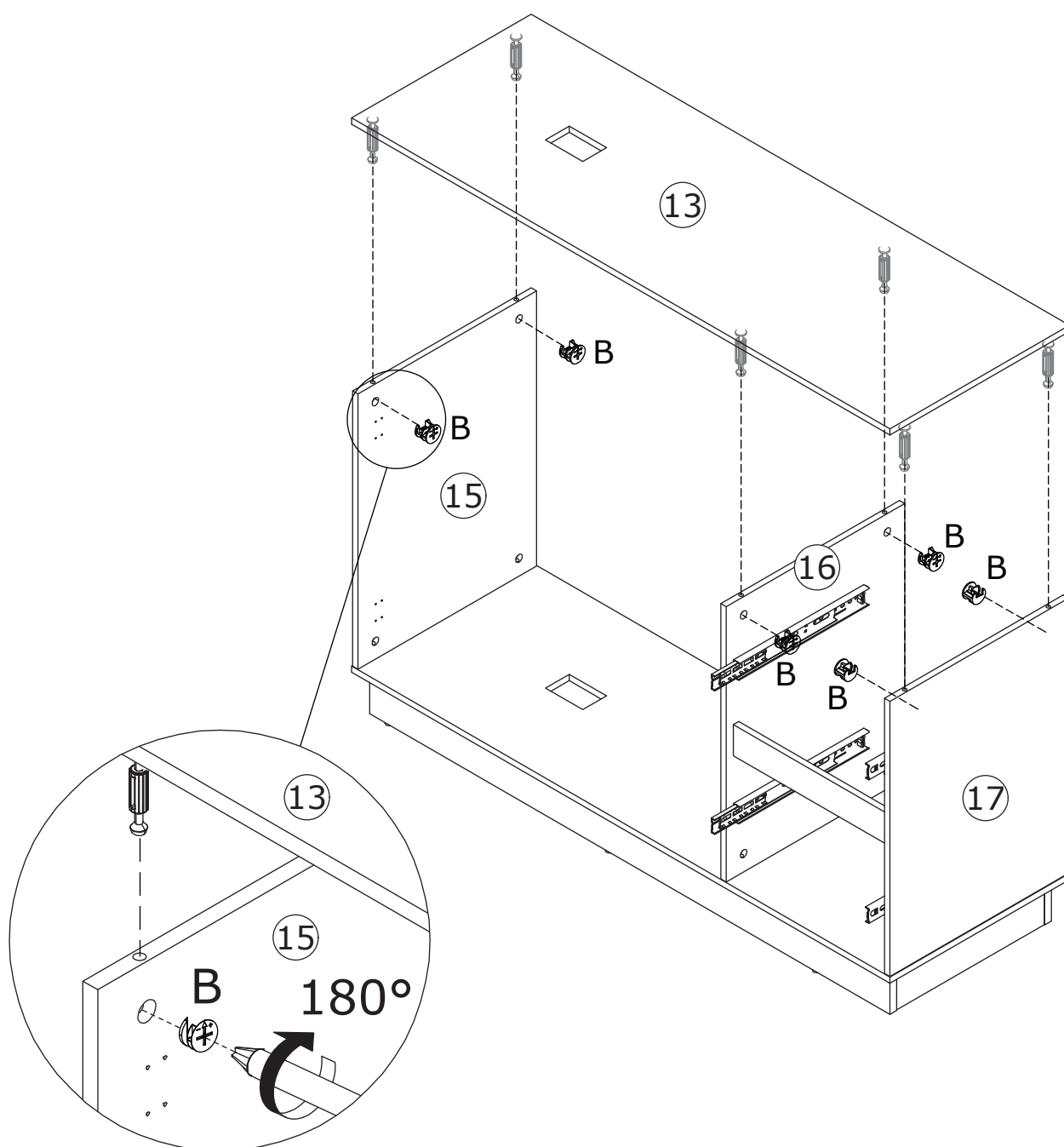
B x 6



Ø 15 x 10 mm



Attach panel 13 to the top, add cam lock(B) into panel 15, 16, 17 and turn clockwise to tighten as shown.

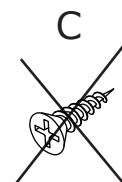
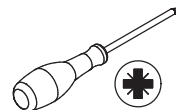


10

D x 18



M3.5 x 14 mm



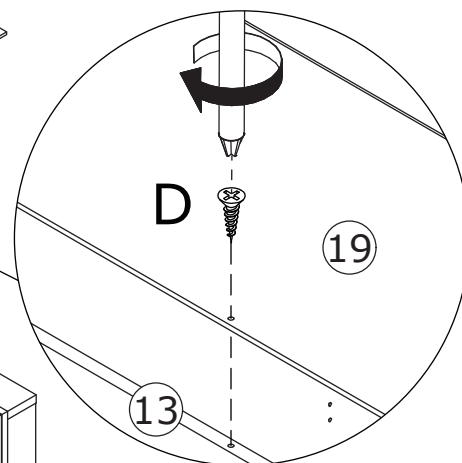
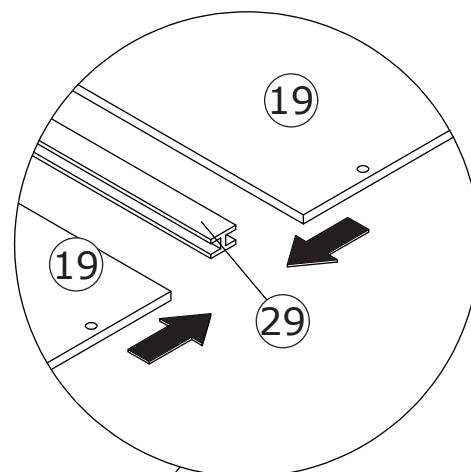
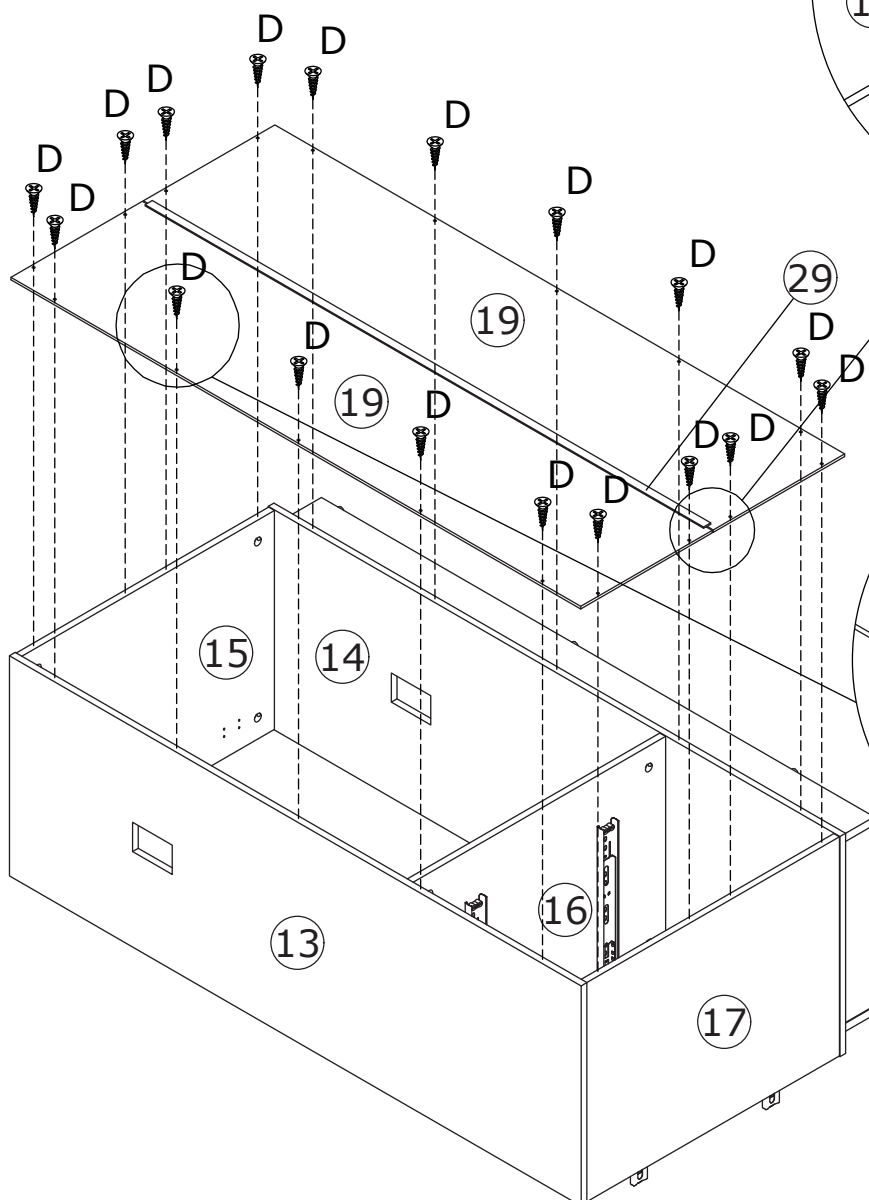
M3.5 x 12 mm

D



M3.5 x 14 mm

Connect two back panel 19 with strip 29 at first.
Fix back panel 19 to the unit with screw(D) as shown.



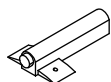
11

C x 4

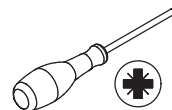


M3.5 x 12 mm

G x 2



D28

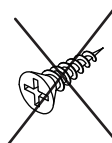


C



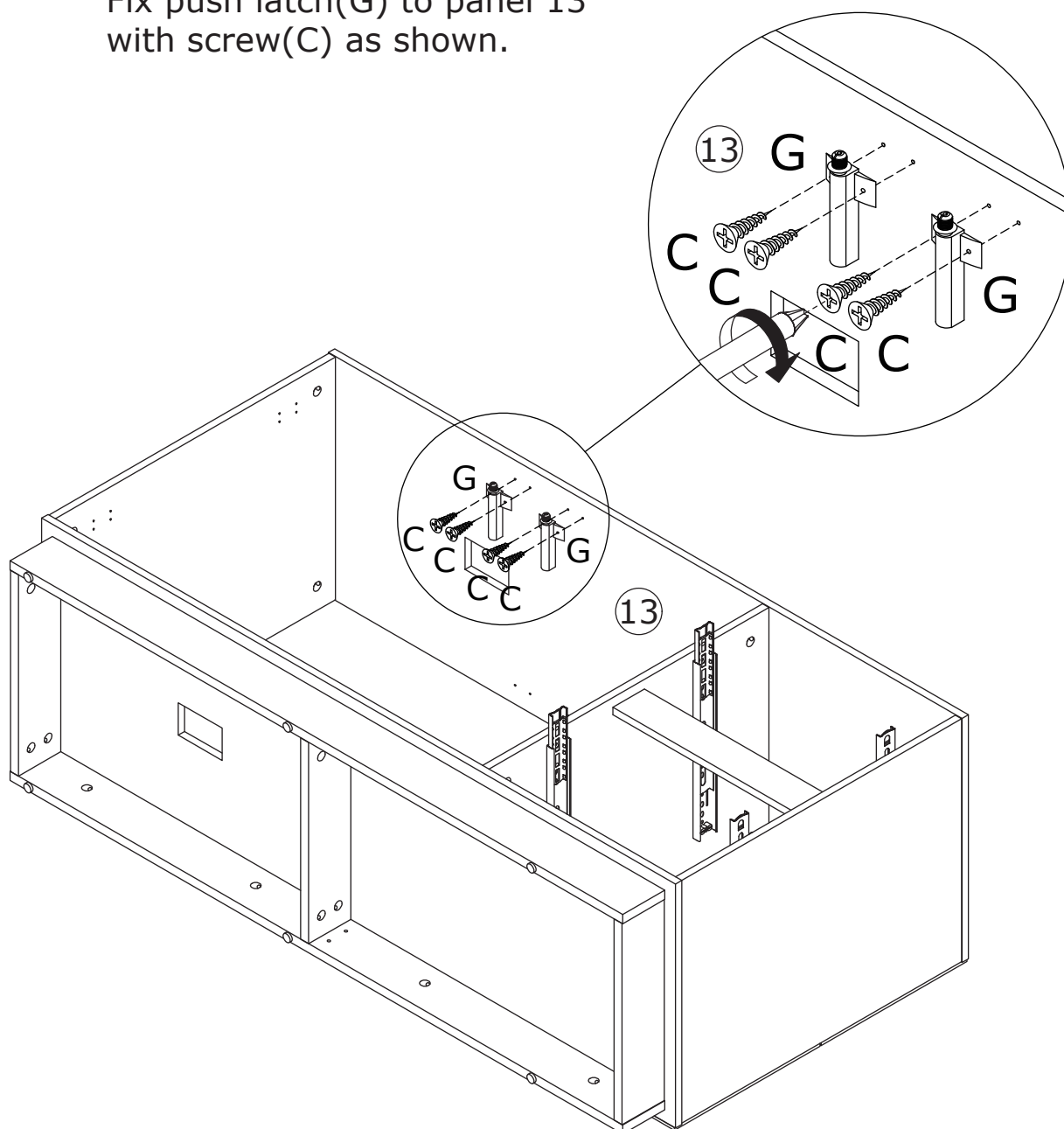
M3.5 x 12 mm

D



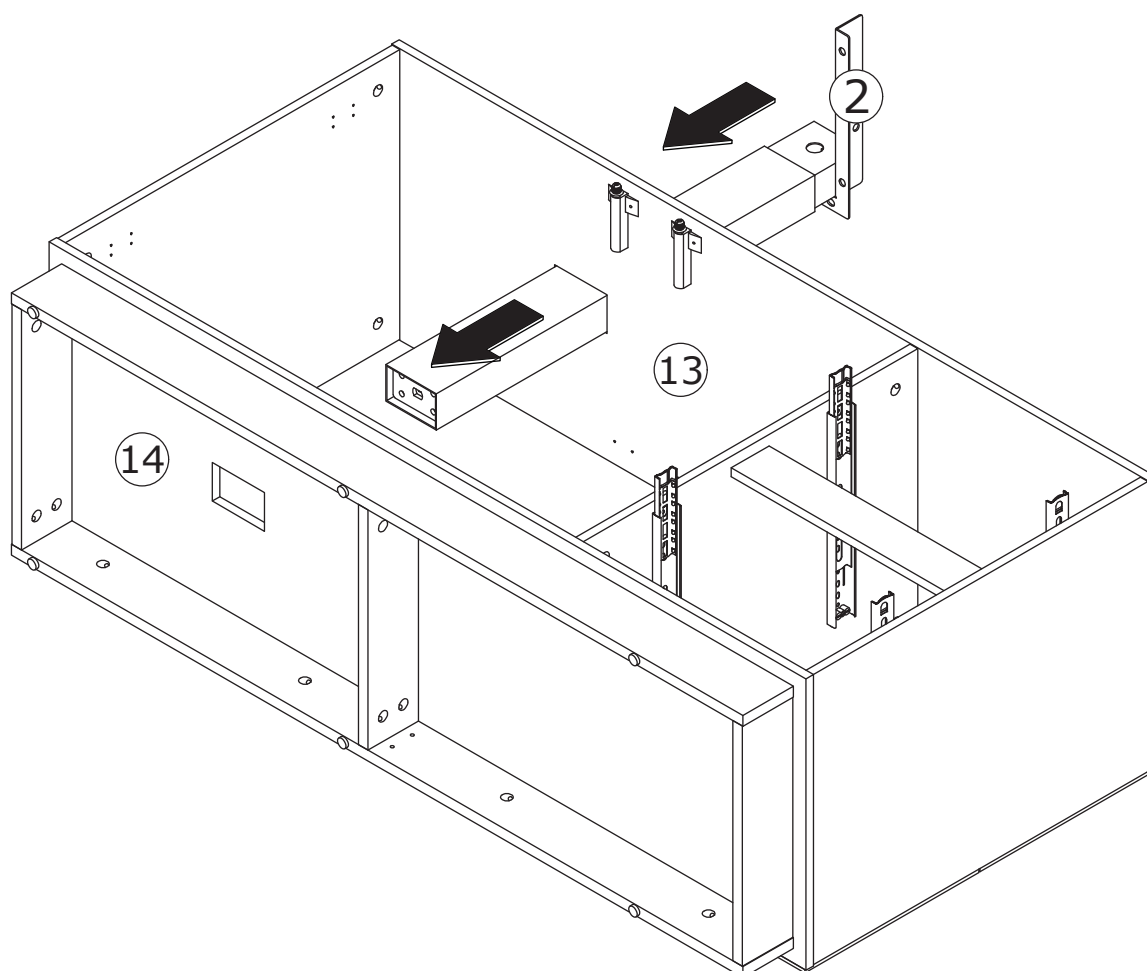
M3.5 x 14 mm

Fix push latch(G) to panel 13 with screw(C) as shown.



12

Insert steel leg 2 into the opening as shown.



13

H x 2

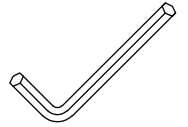


M8 x 45 mm

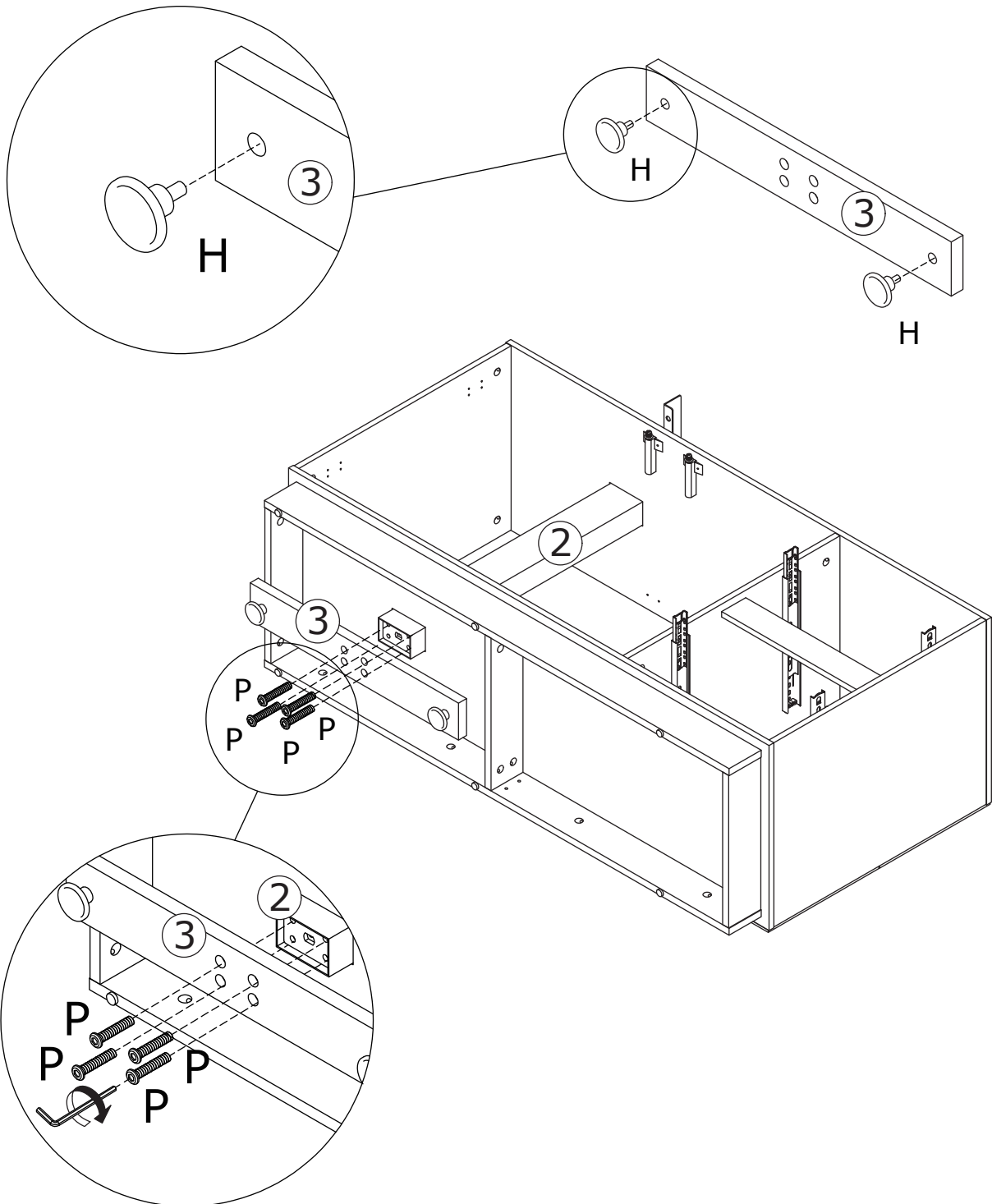
P x 4



M8 x 30 mm



Rotate foot pad(H) into panel 3 at first.
Fix panel 3 to leg steel leg 2 with screw(P) as shown.



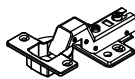
14

C x 8

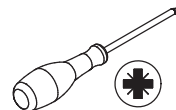


M3.5 x 12 mm

I x 4



DW

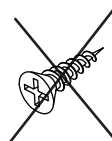


C



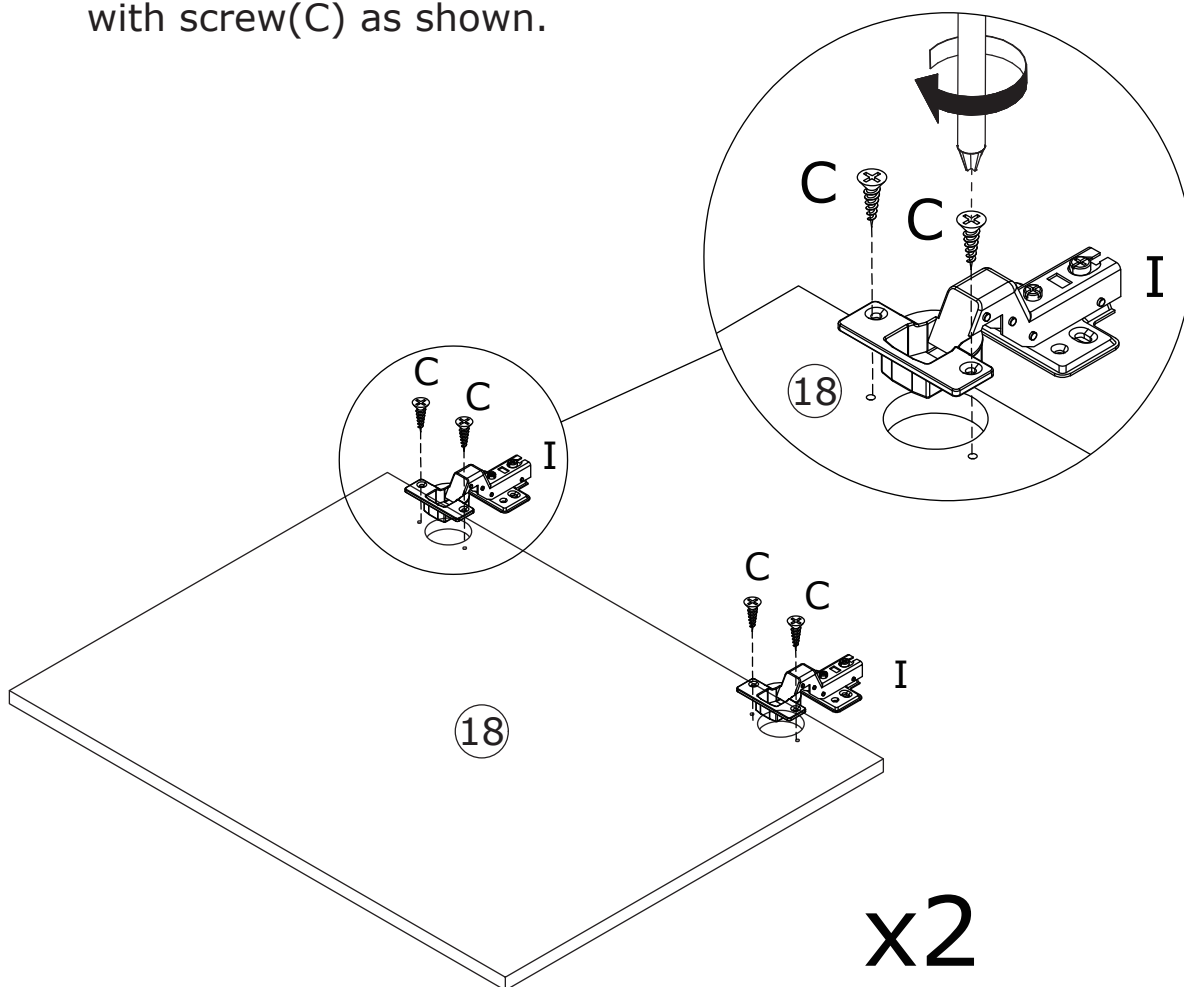
M3.5 x 12 mm

D



M3.5 x 14 mm

Fix hinge(I) to panel 18
with screw(C) as shown.

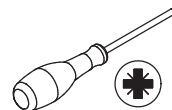


15

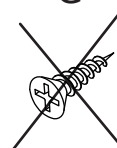
D x 16



M3.5 x 14 mm



C



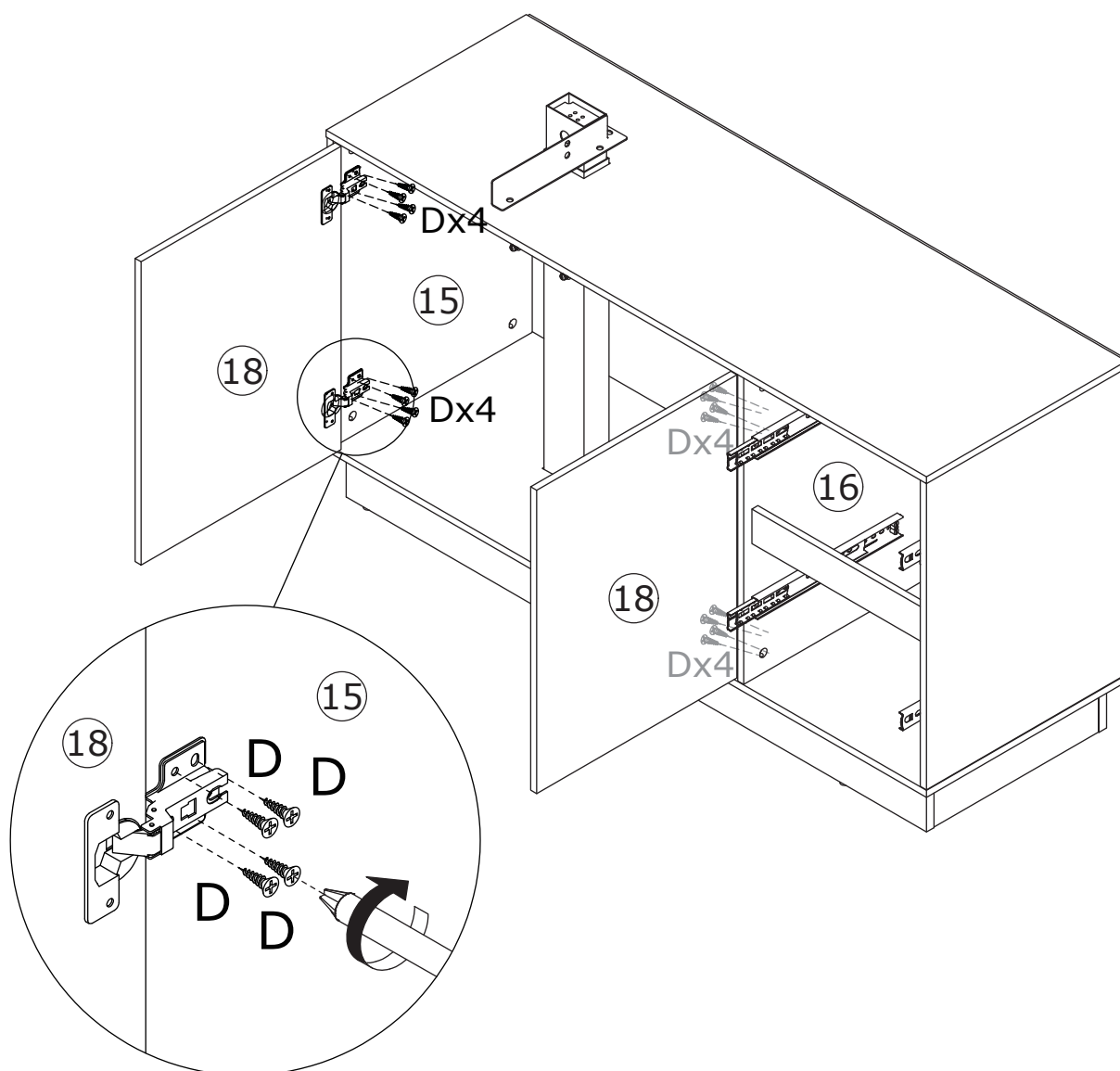
M3.5 x 12 mm

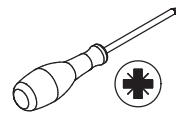
D



M3.5 x 14 mm

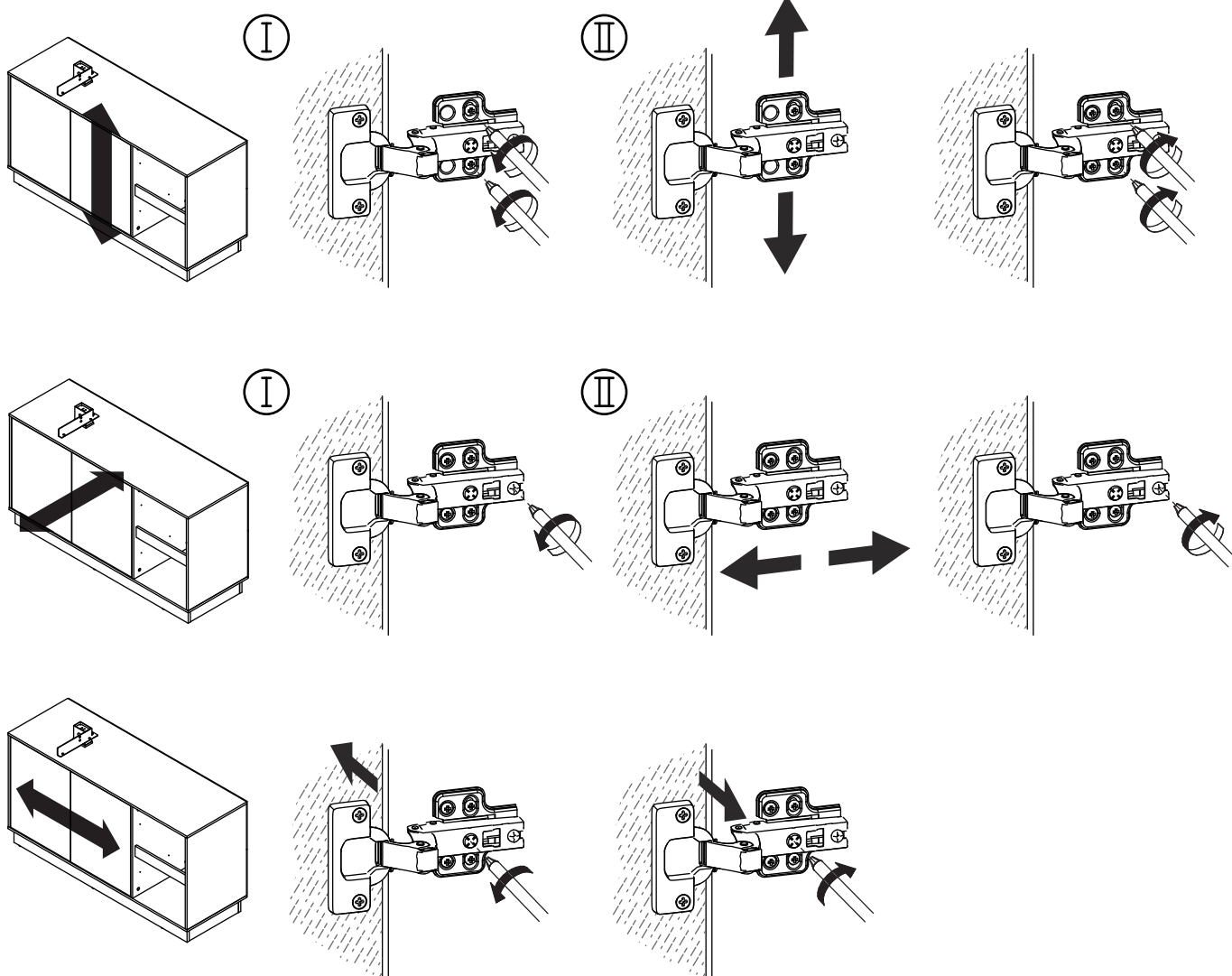
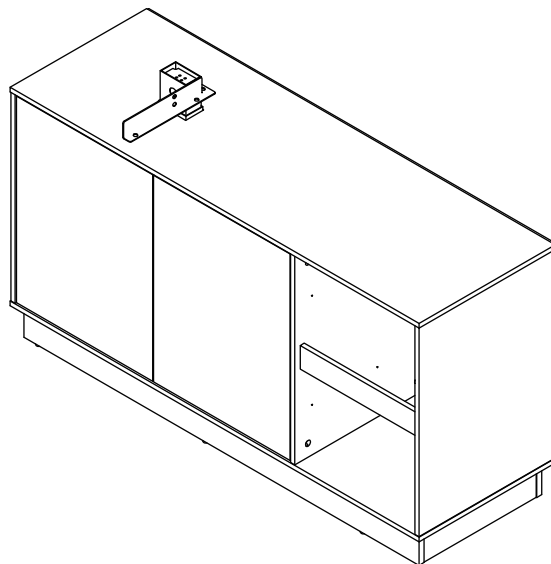
Assemble door 18 to panel 15 and 16
by fixing hinge with screw(D) as shown.





If doors are still not aligned if the hinges are properly correctly, please watch the video.

<https://youtu.be/n0Lb36SoODM>



17

H x 2

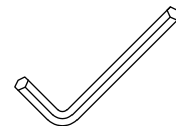


M8 x 45 mm

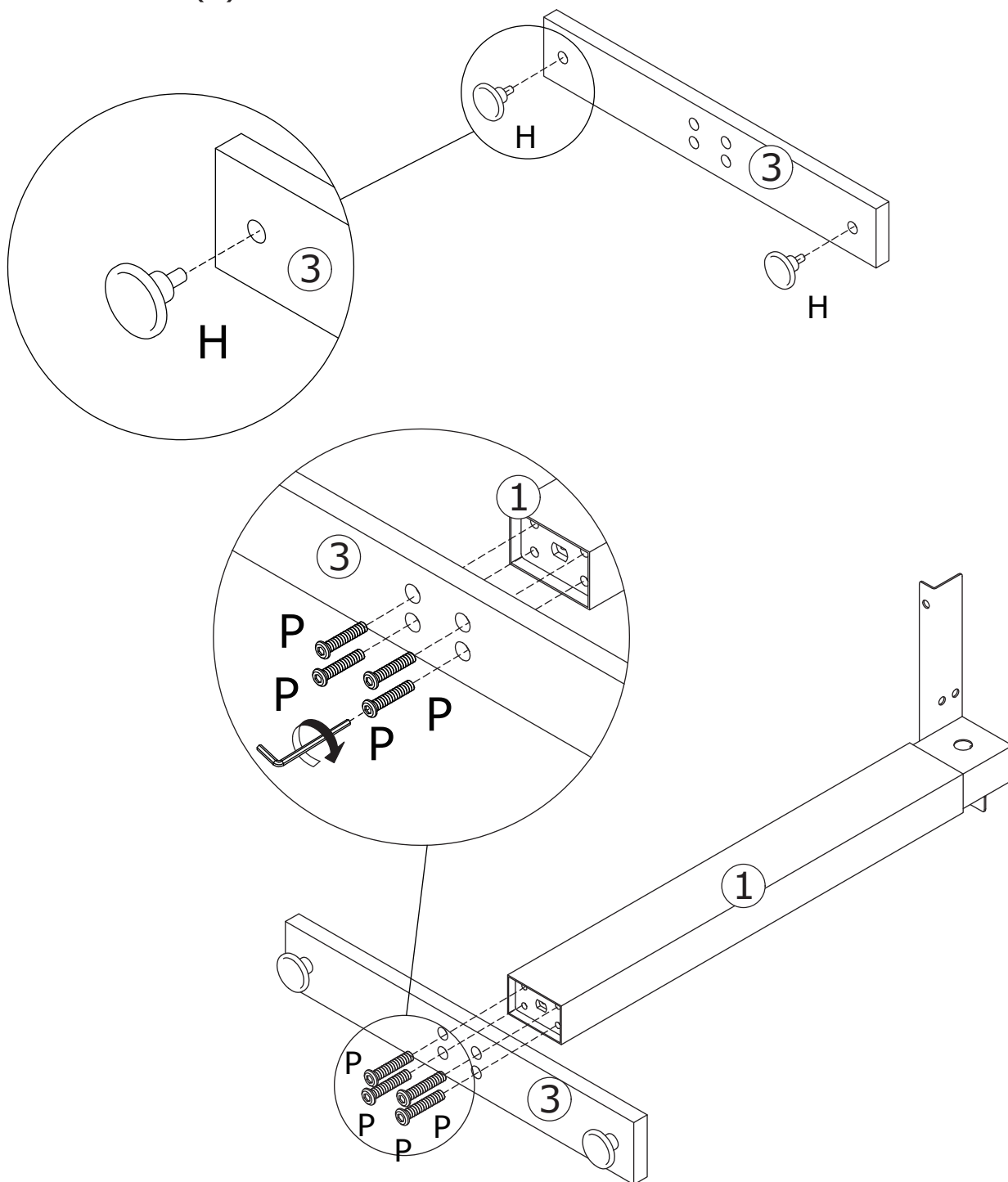
P x 4



M8 x 30 mm



Rotate foot pad(H) into
panel 3 at first.
Fix panel 3 to leg steel leg 1
with screw(P) as shown.



18

J x 2



M4 x 45 mm

K x 2

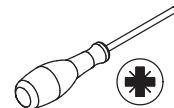
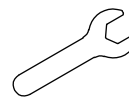


M4

L x 2



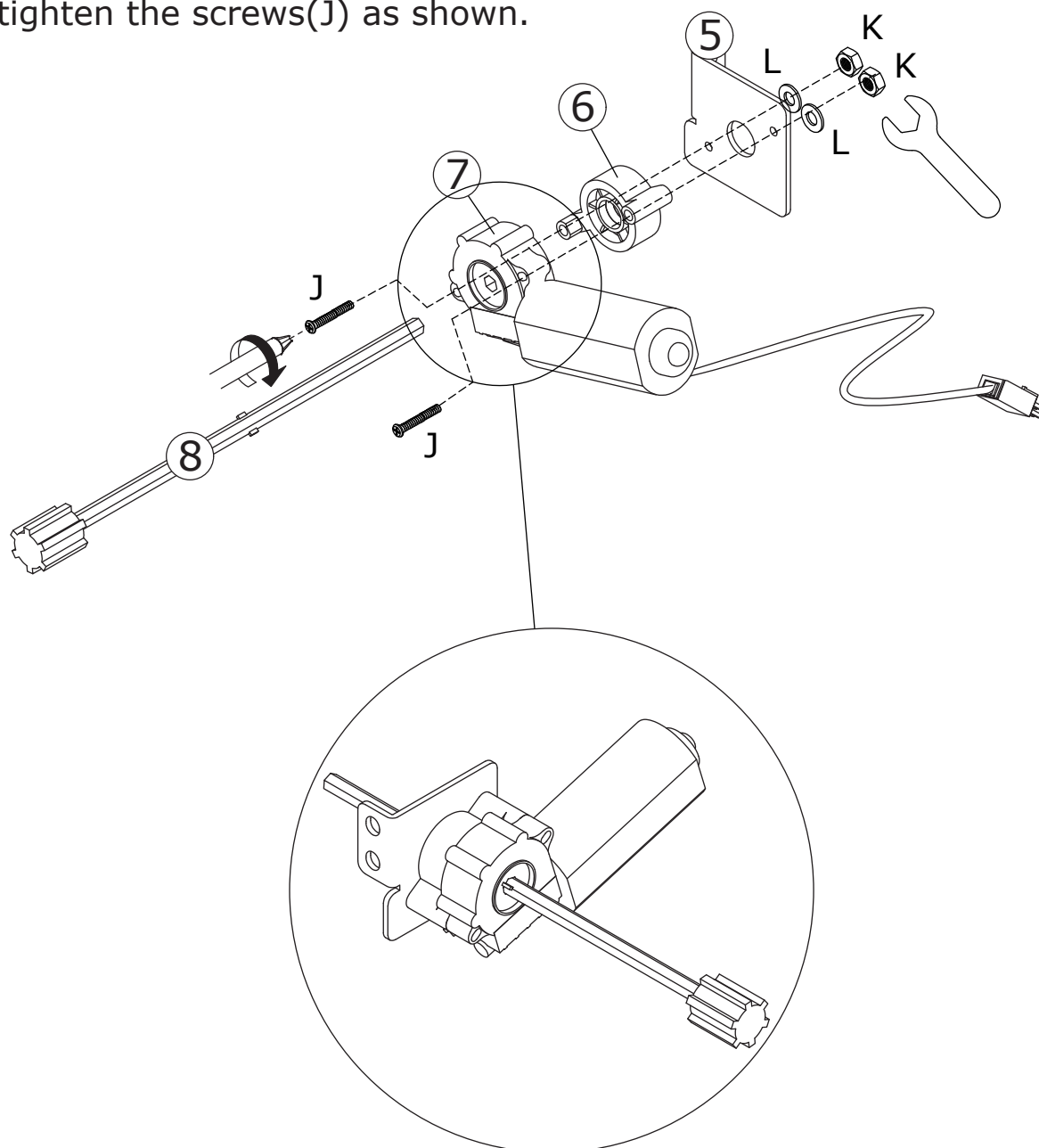
14 x 5 x 1 mm



Fix part 7, 6 to part 5 with screw(J), washer(L) and nut(K) at first.

Be careful not to tighten the screws first.

Then insert rod 8 into the hole, and tighten the screws(J) as shown.



19

N x 4

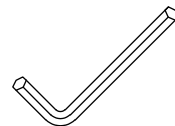
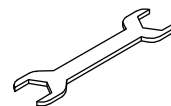


M6 x 30 mm

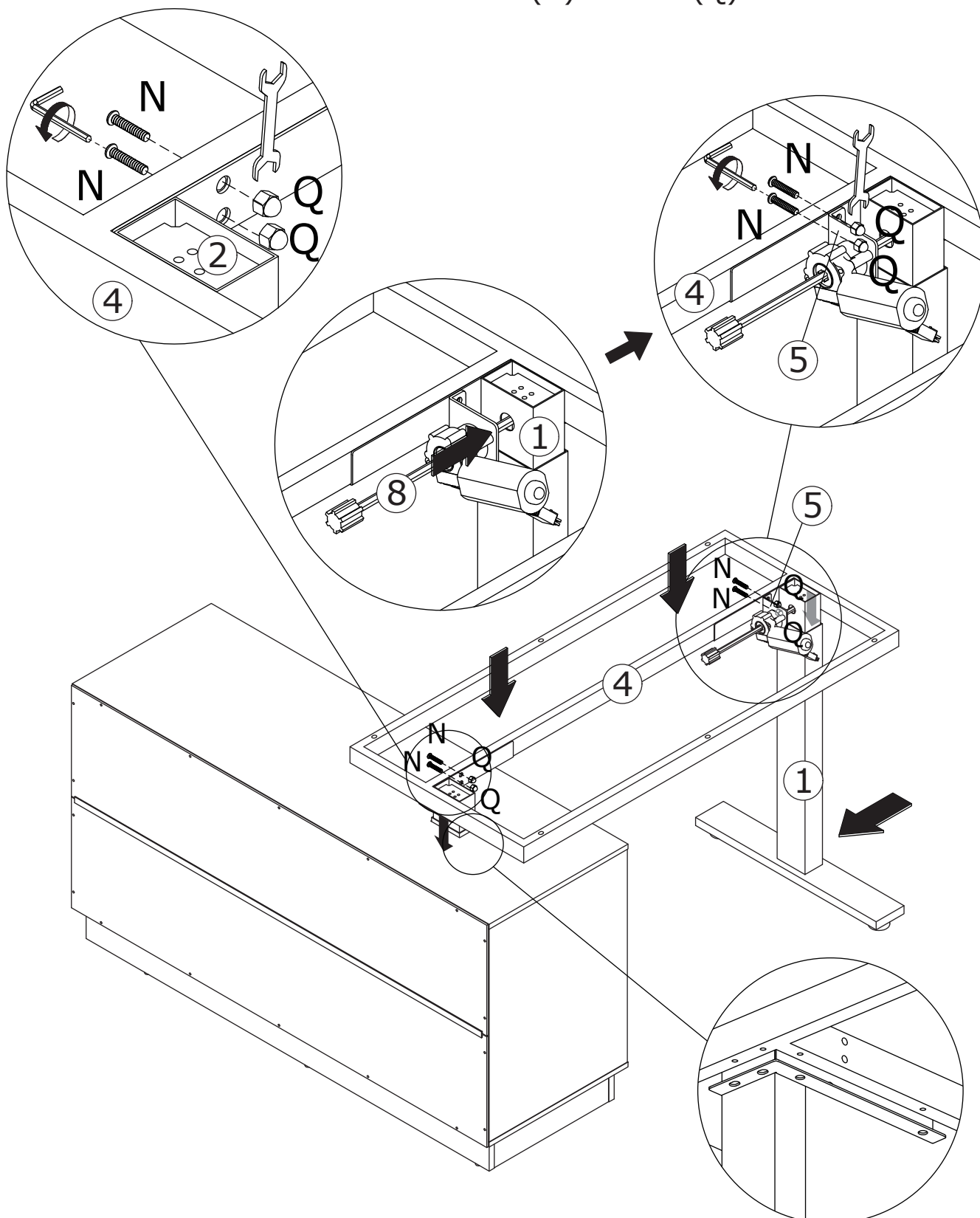
Q x 4



M6

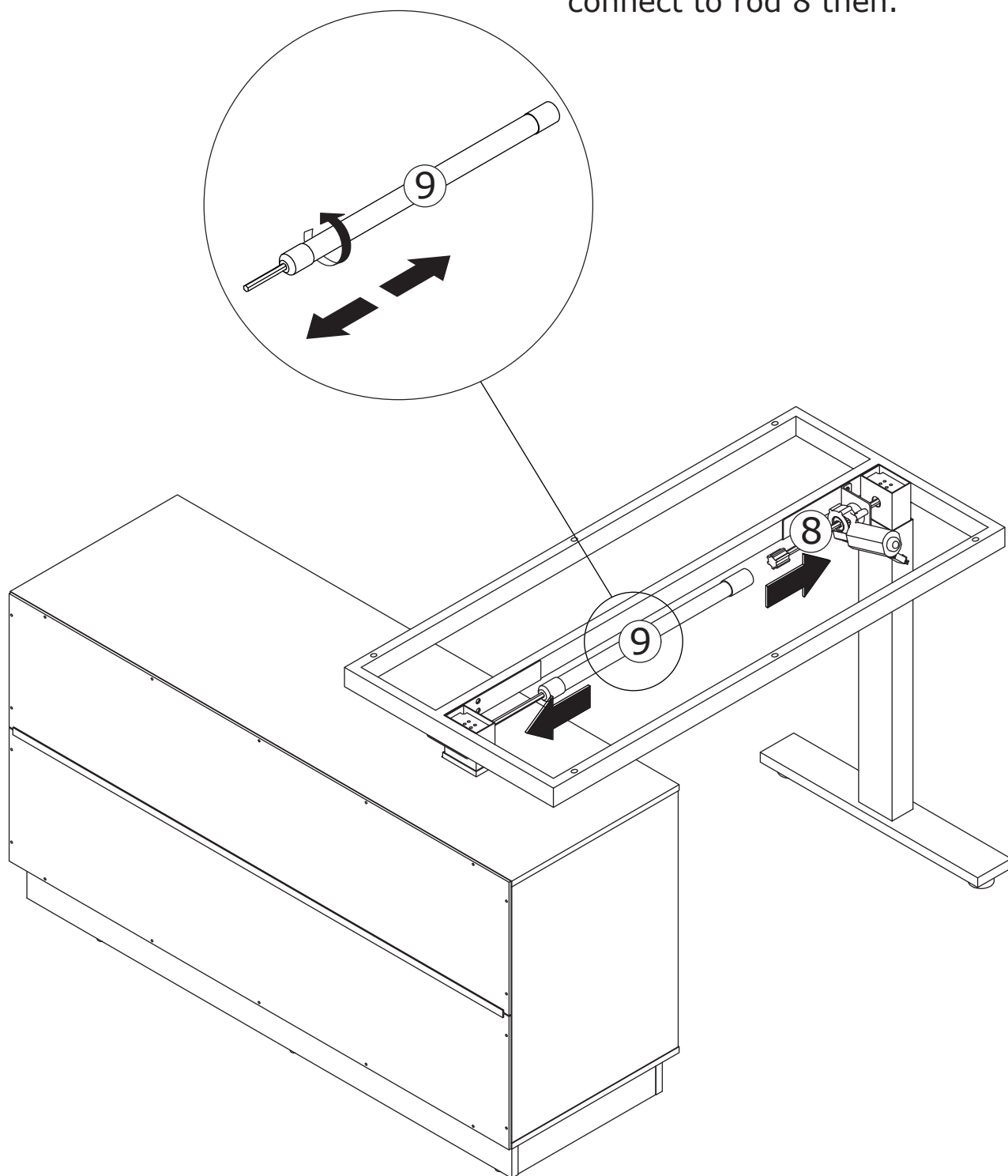


Fix the iron frame part 4 to leg 1 and 2 with screw(N) and nut(Q) as shown.

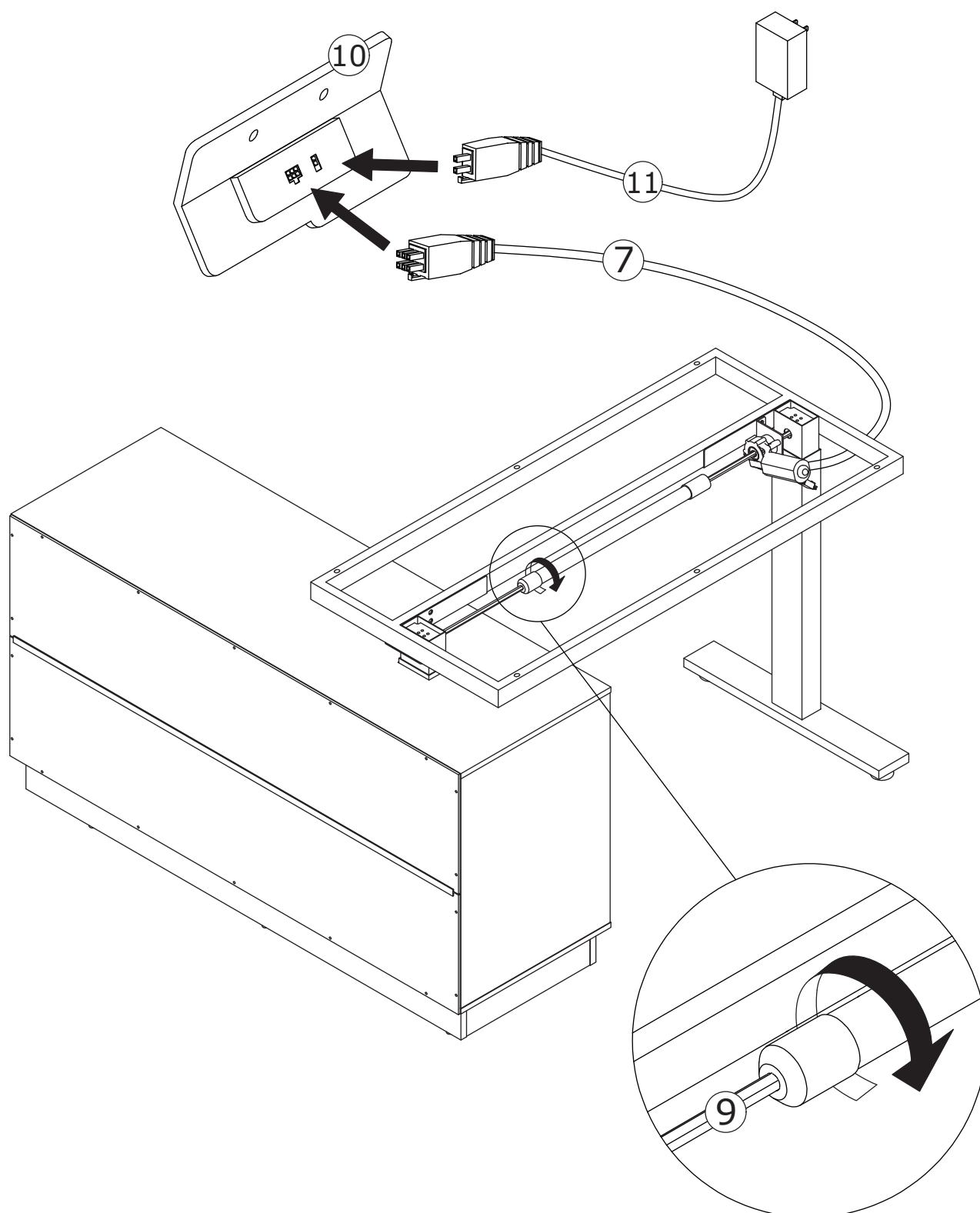


20

Insert part 9 into leg 2 and
connect to rod 8 then.



Turn the rod clockwise to tighten it,
and then connect power cable 7 and
11 to control part 10 as shown.

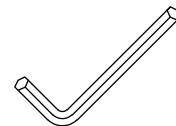


22

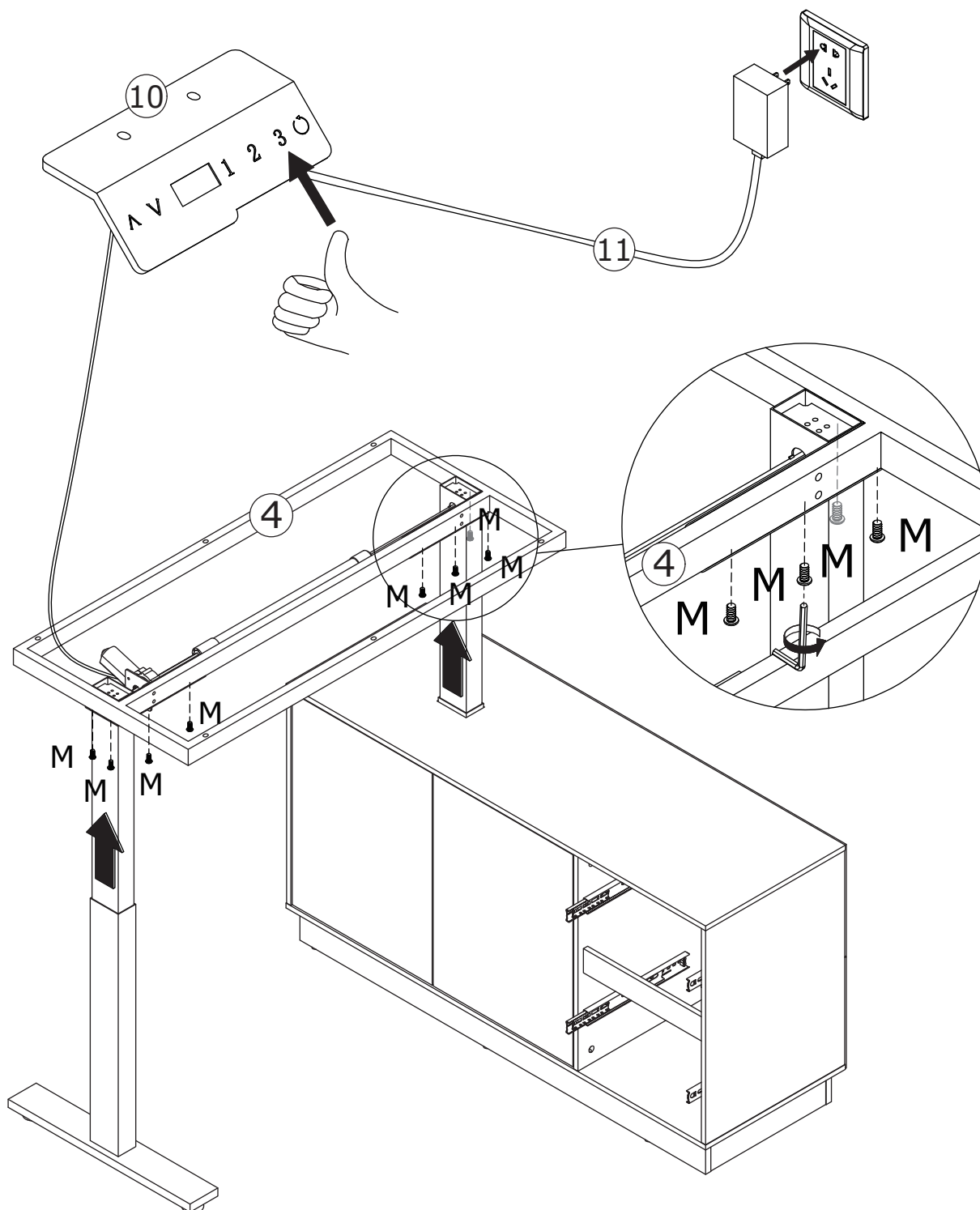
M x 8



M6 x 12 mm

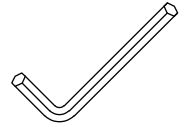


After adjusting the height of the table, connect the frame part 4 with the legs again with screw(M) as shown.

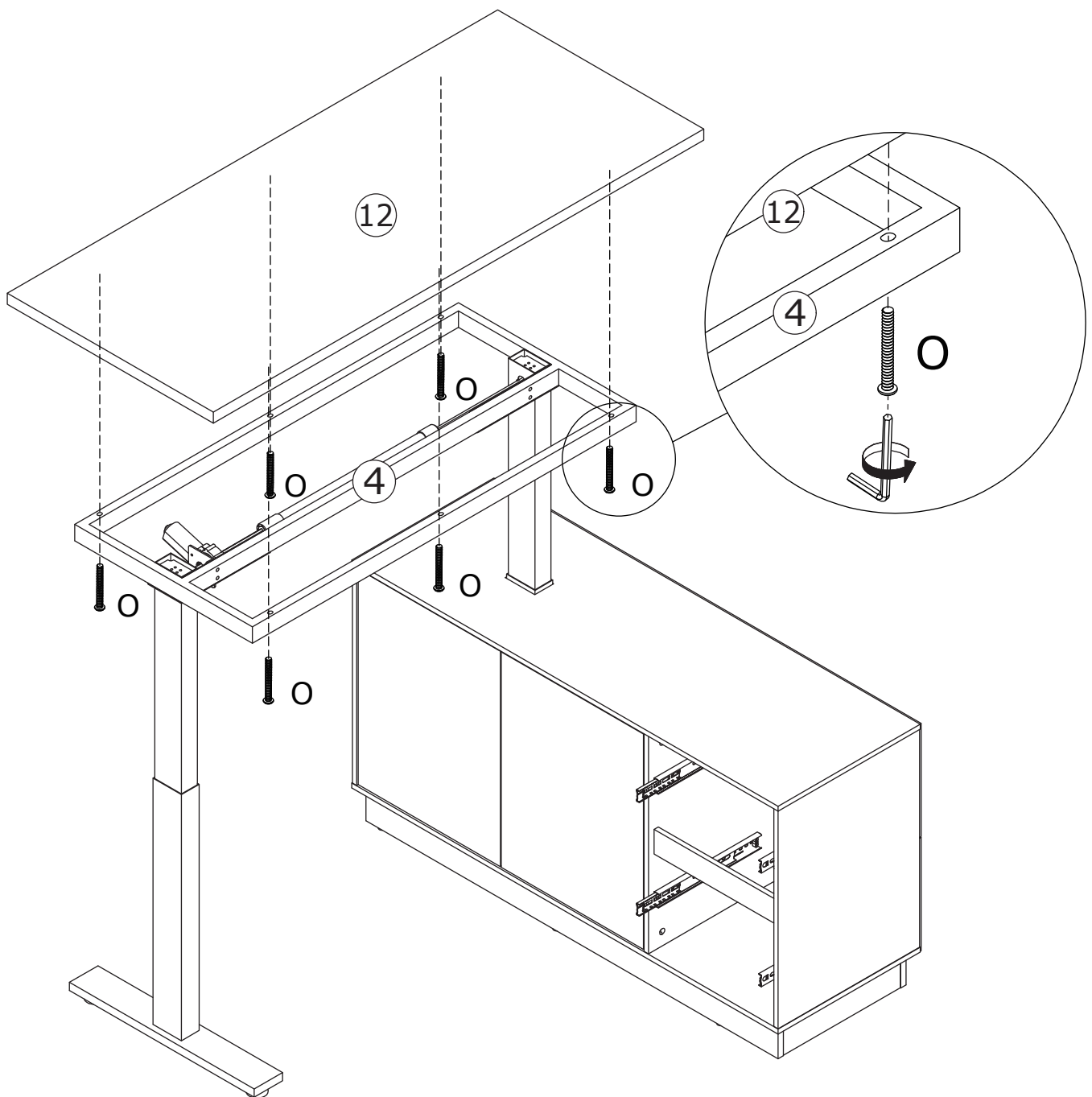


23

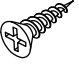
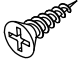

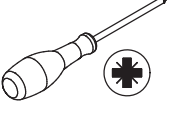
O x 6
M6 x 50 mm



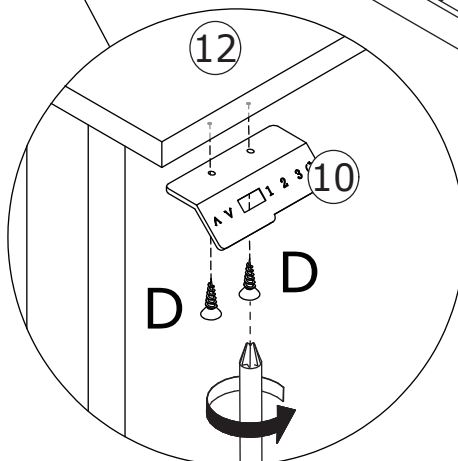
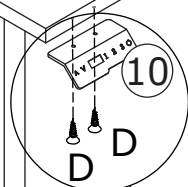
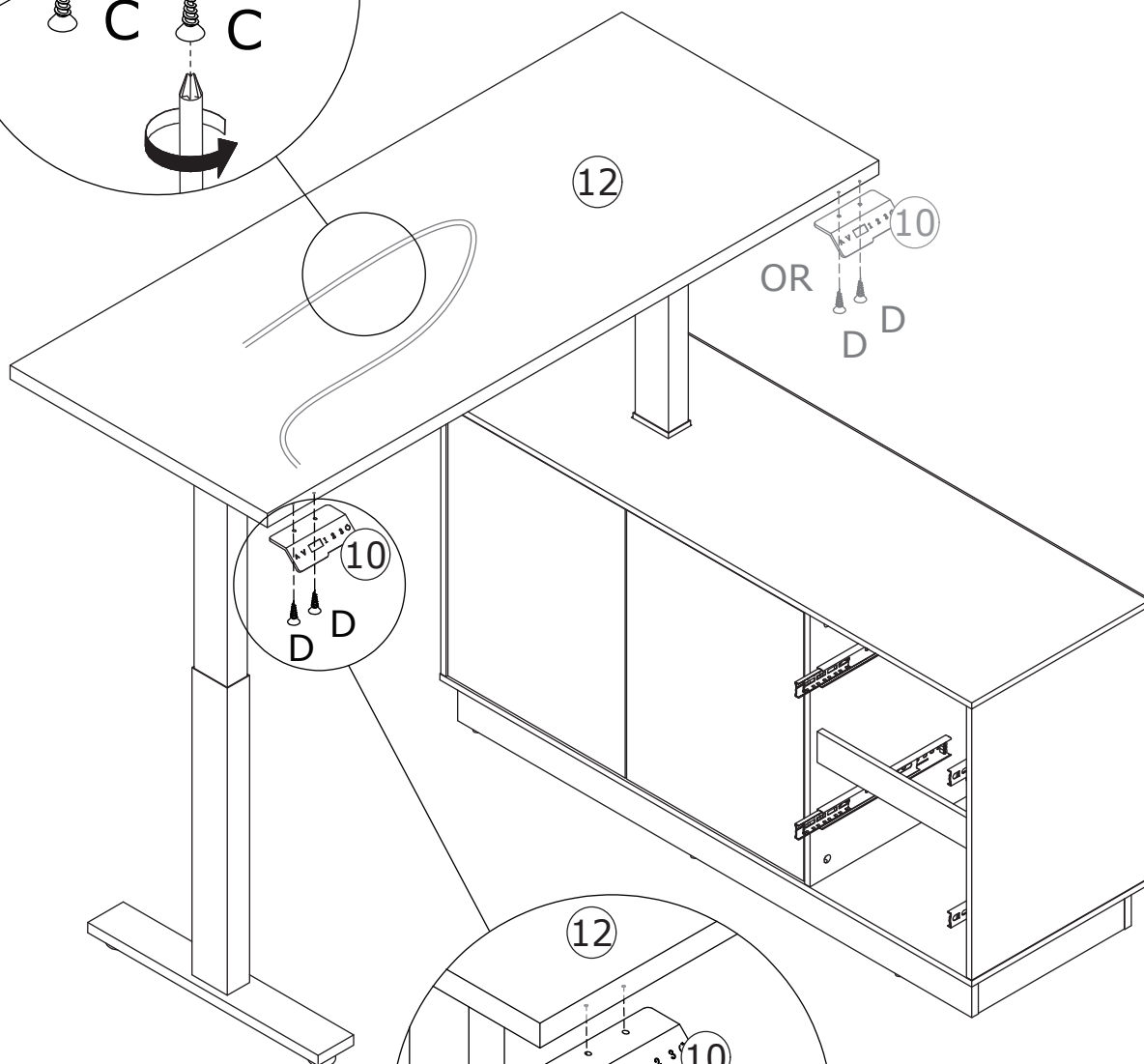
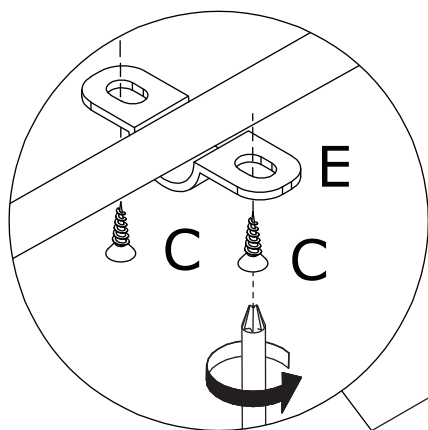
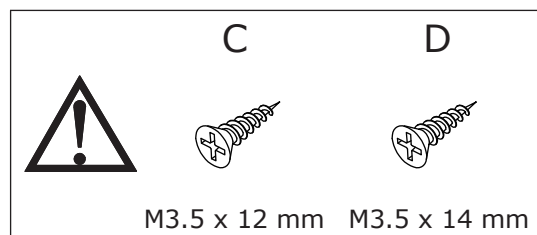
Fix panel 12 to part 4
with screw(O) as shown.



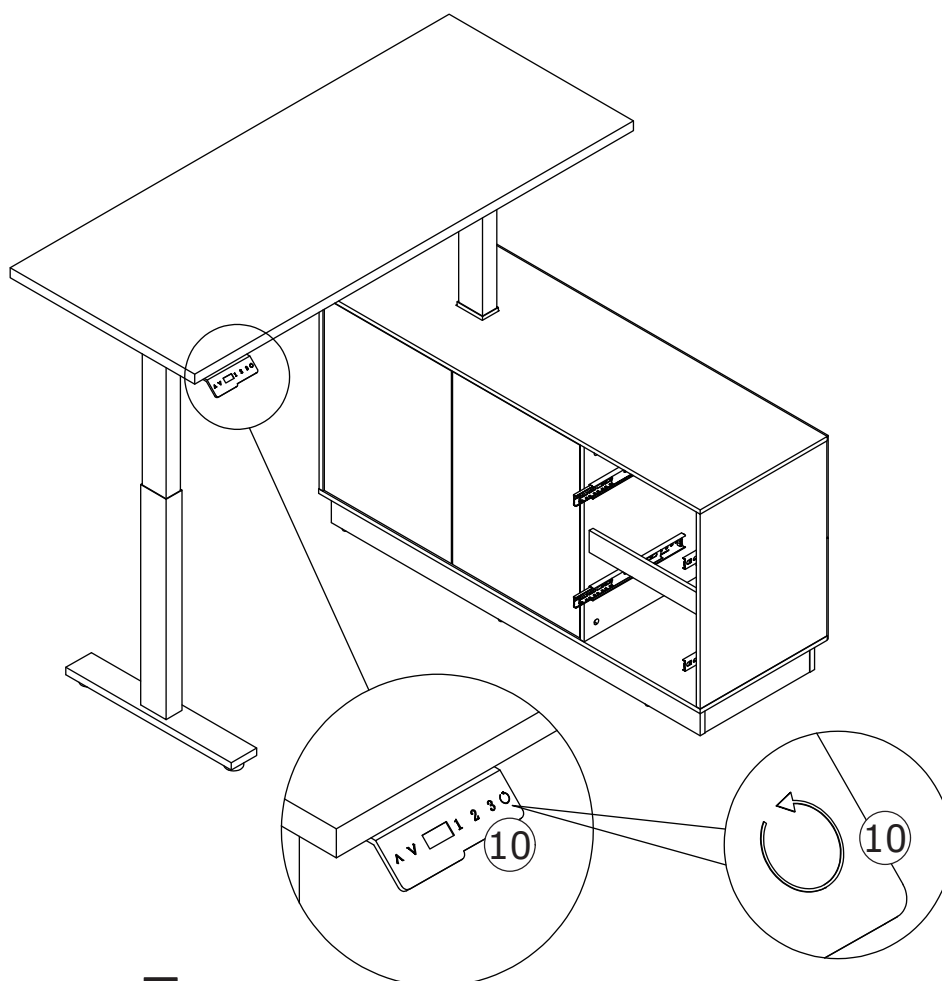
24

<p>C x 8</p>  <p>M3.5 x 12 mm</p>	<p>D x 2</p>  <p>M3.5 x 14 mm</p>	<p>E x 4</p>  <p>7 x 9 mm</p>	
--	--	--	---

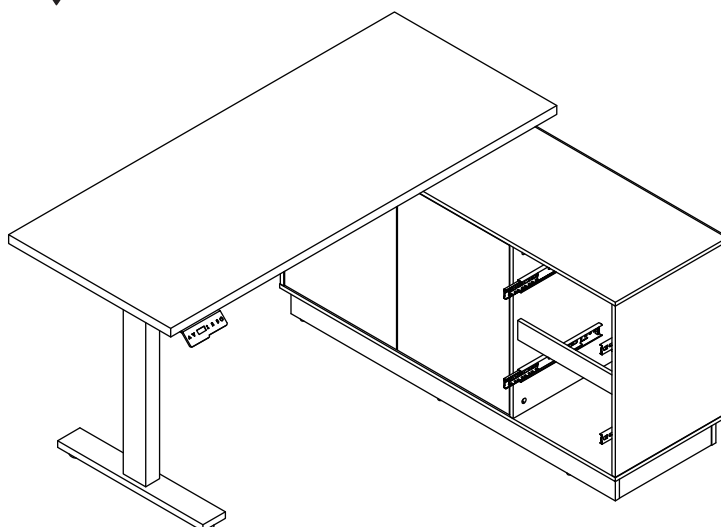
Fix control part 10 to panel 12 with screw(D) as shown.



25

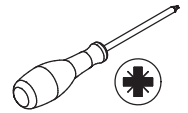


Long press the "Reset button" until the lifting table works, then release the button. This operation will automatically initialize the lifting height of the table.

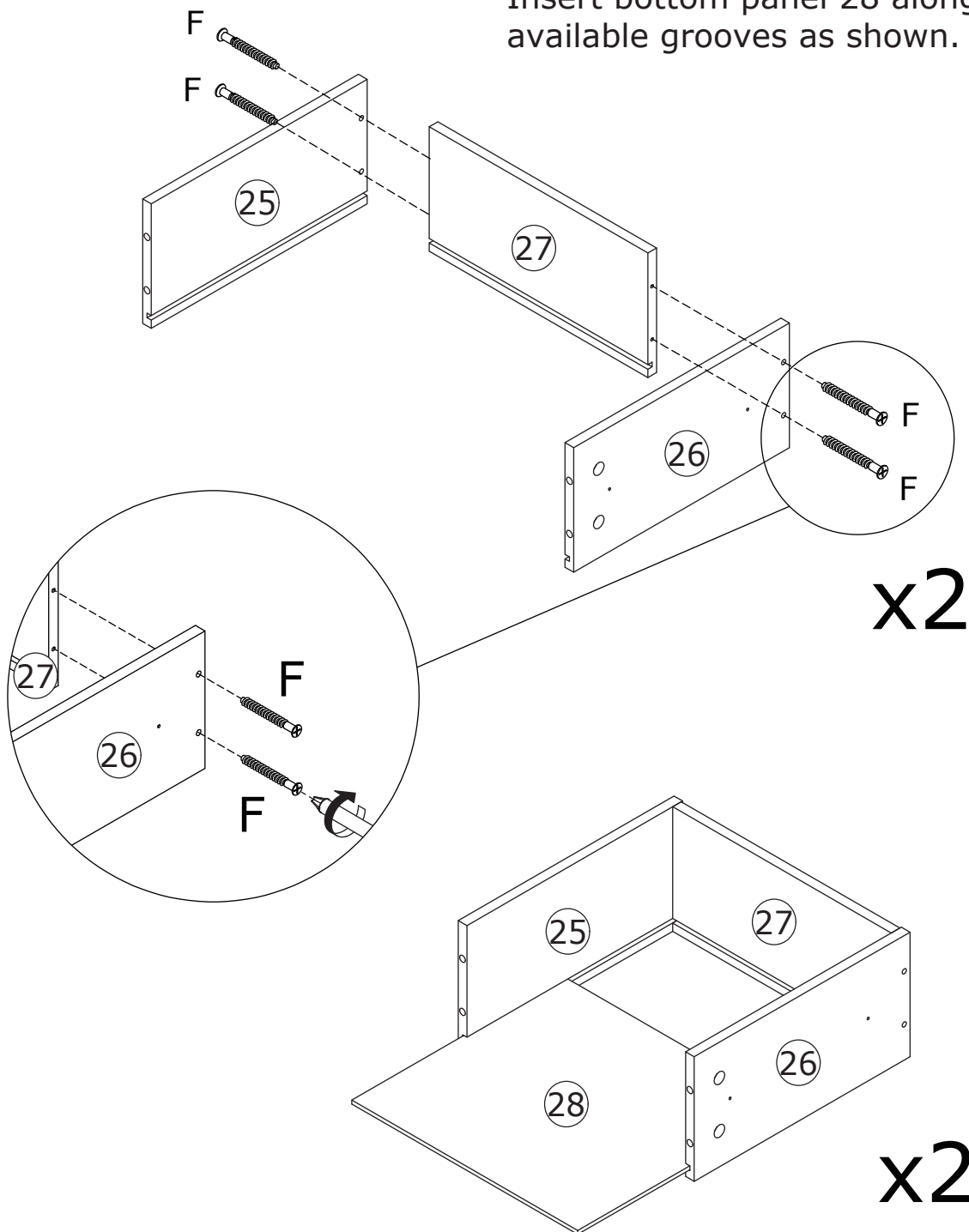


26

F x 8
M5 x 40 mm

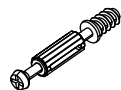


Fix panel 27 to panel 25 and 26 with screw(F) as shown.
Insert bottom panel 28 along available grooves as shown.



27

A x 8

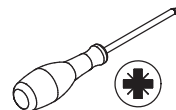


M5 x 42 mm

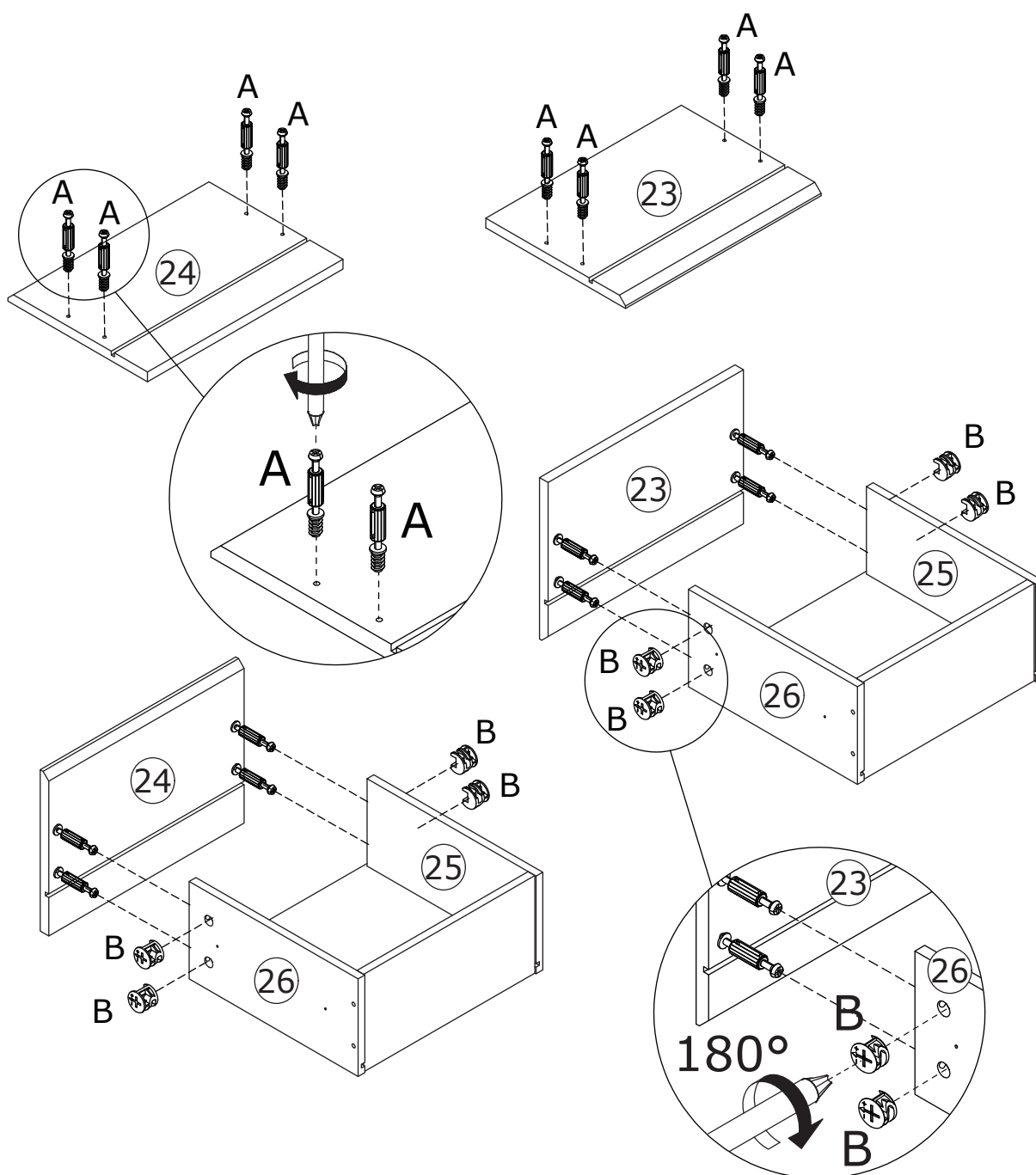
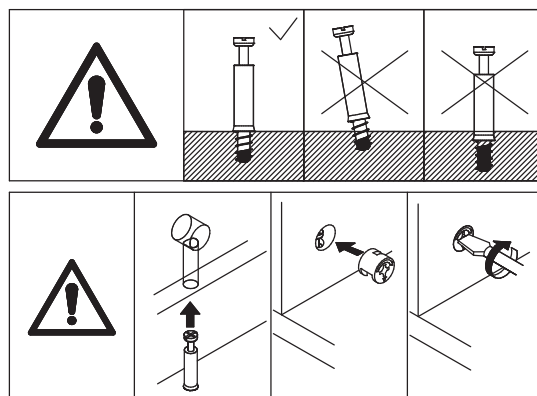
B x 8



Ø 15 x 10 mm



Screw eccentric rod(A) into panel 23 and 24 at first. Attach panel 23 and 24 to the components, add cam lock(B) into and turn clockwise to tighten as shown.

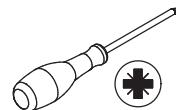


28

C x 8



M3.5 x 12 mm

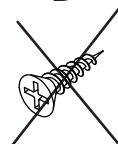


C



M3.5 x 12 mm

D



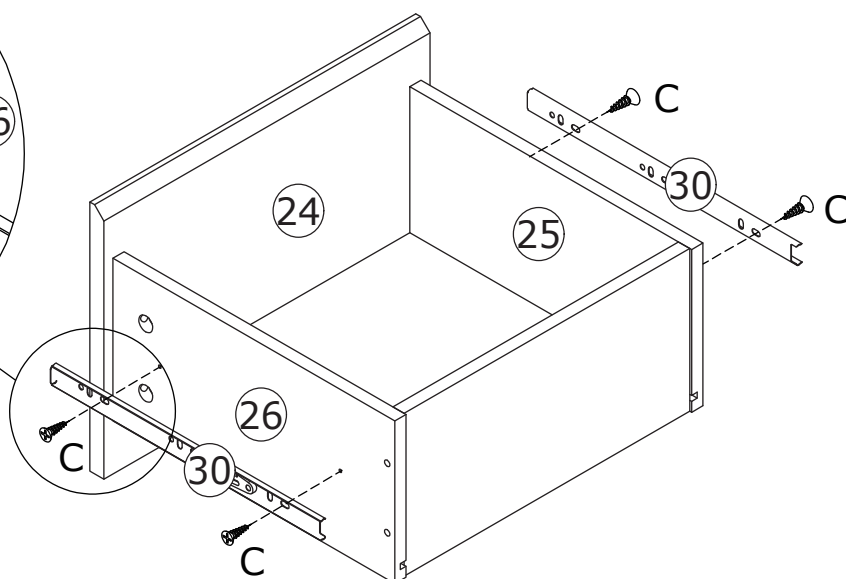
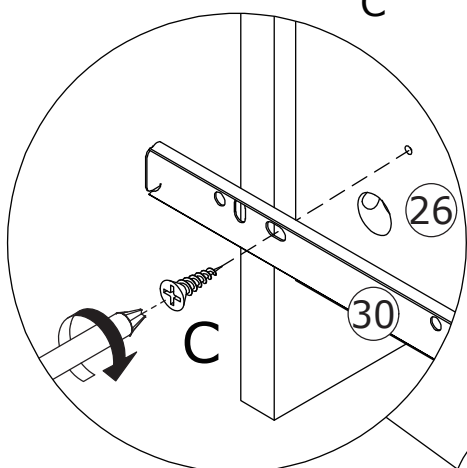
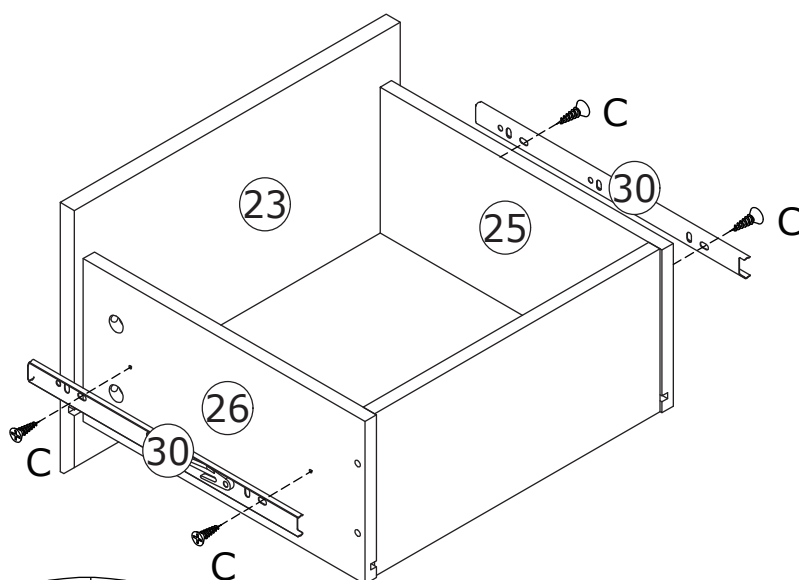
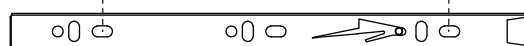
M3.5 x 14 mm

Fix runner 30 to panel 25 and 26 with screw(C) as shown.

30

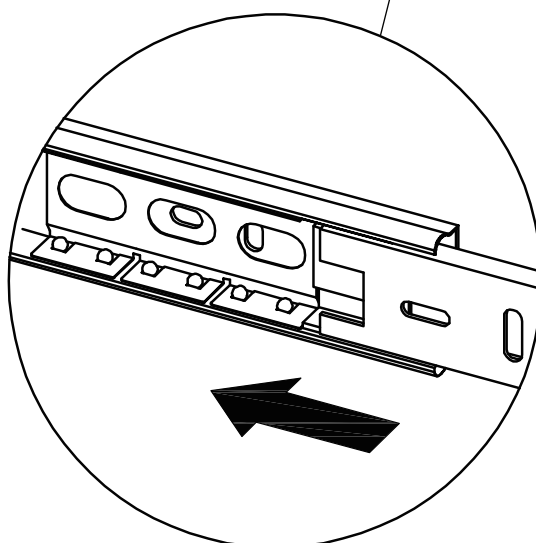
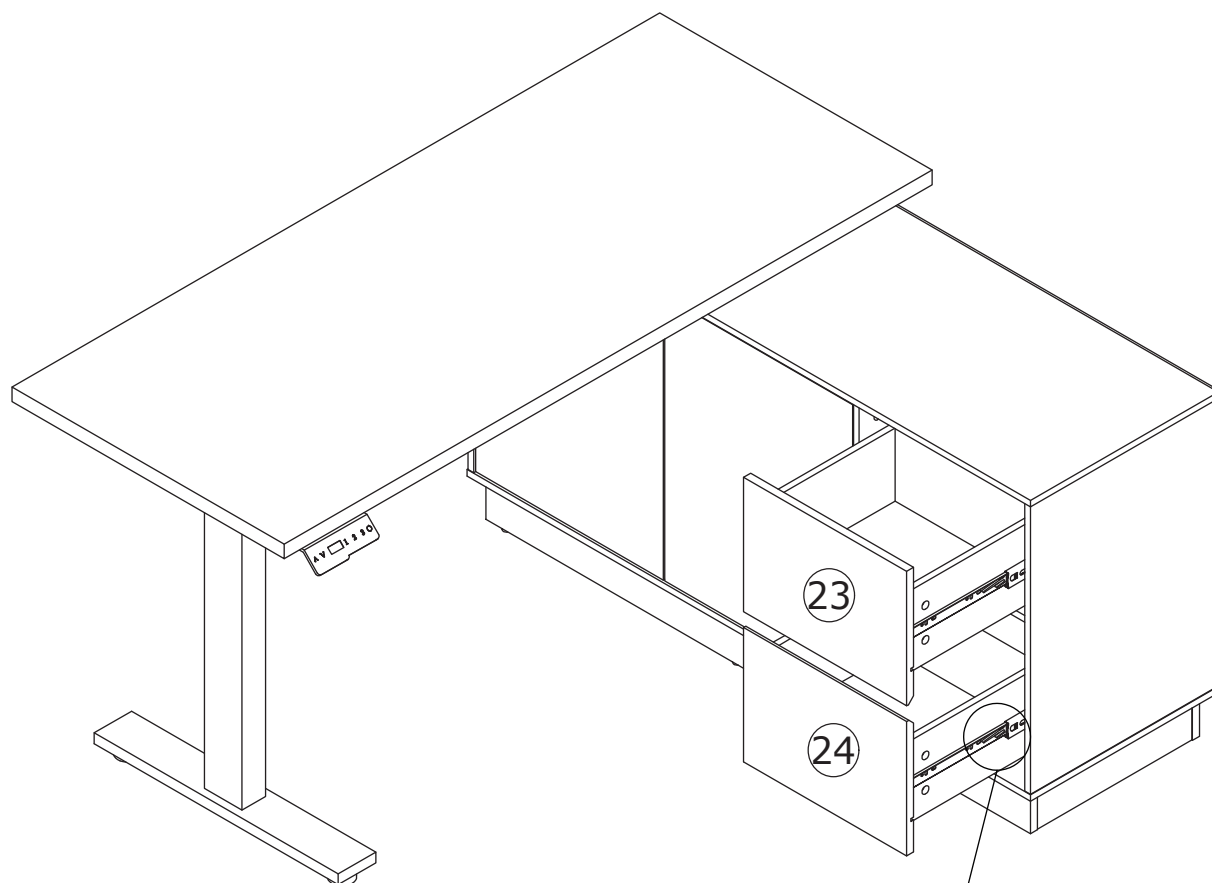
C

C



29

Align rails, insert drawers in.



WARRANTY

WARRANTY CLAIMS

- There is a 30-day warranty for broken furniture or any other problems that do not work properly. The warranty will start from the date of purchase which must be verified by proof of purchase.
- Before making a claim, we may be able to answer your query, simply call us. Please leave your purchase order number, along with some details of the problem, if you want a replacement part. We will arrange within 48 hours. If there is out of stock, we will reply with a shipping date.
- The product must be used in accordance with the instructions provided. For health reasons.
- For other reasons, if the furniture needs to be returned, it must be cleaned and dried and operated within 30 days of receipt.

Type of Warranty Claim

- Failure to follow the furniture instructions will invalidate the warranty. Attention please.
- Does not include damage during installation, but includes damage during transportation.

Scope of responsibility

- Shall not bear any responsibility for misuse or user damage and / or loss of parts during the installation of furniture.
- After using, the damage and scratches of the furniture are not covered by the warranty.

The Warranty Relates to All Bought in The Us and Covers The Following Areas

- Sheet parts: 1 month from the date of purchase.
- Electrical parts: 1 month from the date of purchase.

RETURNS

CHANGED YOUR MIND AND NEED TO RETURN YOUR ITEM?

PLEASE FOLLOW THE BELOW INSTRUCTIONS:

- If you have purchased and have simply changed your mind, follow the retailer's instructions for returns.

DEFECTIVE ITEMS

- If your item is defective in any way, i.e. it doesn't work but you can't identify why, in the first instance, please call us.

DAMAGED ITEMS

- If you receive an order with obvious shipping damage from the retailer, then we suggest the delivery is refused. If the delivery has been accepted and then shipping damage is found, please follow the specific instructions advised by the retailer.
In all circumstances please save all packaging material and paperwork for the order. Please be aware that if you dispose of packaging material or attempt to return the merchandise without contacting the fulfiller, you jeopardise your chances of making a claim, and you may not receive a credit for the return.

AFTER-SALES CONTACT



feedbackstation@163.com



(303)800-6387