

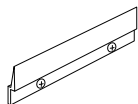
INSTALLATION MANUAL

MIRROR

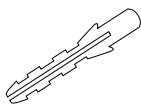
ABOUT US

Thank you for shopping with us! We hope that our products have added a touch of brightness to your life. If you need any assistance, please don't hesitate to reach out. Our dedicated team is available 24/7 to ensure your satisfaction.

ACCESSORIES LIST



Bracket x 1



Wall Anchor-A x 5



Wall Anchor-B x 5

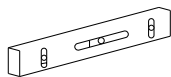


Short Screw x 5



Long Screw x 5

TOOLS REQUIRED



Level Ruler



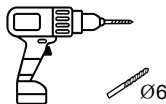
Marker



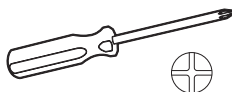
Hammer



Tape Measure



Electric Drill



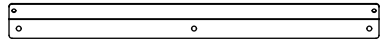
Phillips Screwdriver



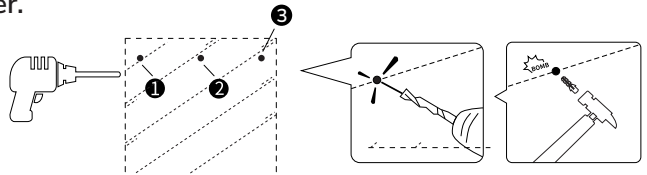
Safety Goggles

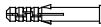
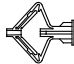
INSTRUCTIONS

1. Confirm the locations of 3 drill holes with a lever, and mark the spots on the wall with a marker.



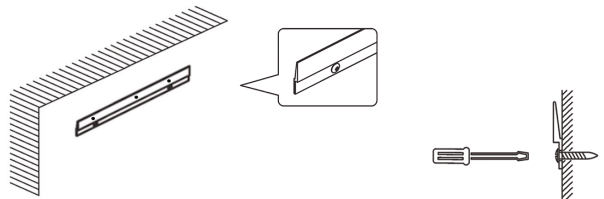
2. Use an electric drill to punch holes at the marked spots, and then apply wall anchors with a hammer.



Thickness of Wall	Recommended Drill Bit	
> 16mm		1/4" (6mm) drill bit, drilling depth in 1 31/32"(50mm)
8 ~ 16mm		25/64" (10mm) drill bit
< 8mm	Unapplicable	

Note: Please wear goggles and pay attention to safety.

3. Screw the bracket to the wall.



4. Place the mirror against the wall, align the hook with the mounted bracket, slowly lower the mirror down, and make sure that it slots into the right position and hangs securely.

