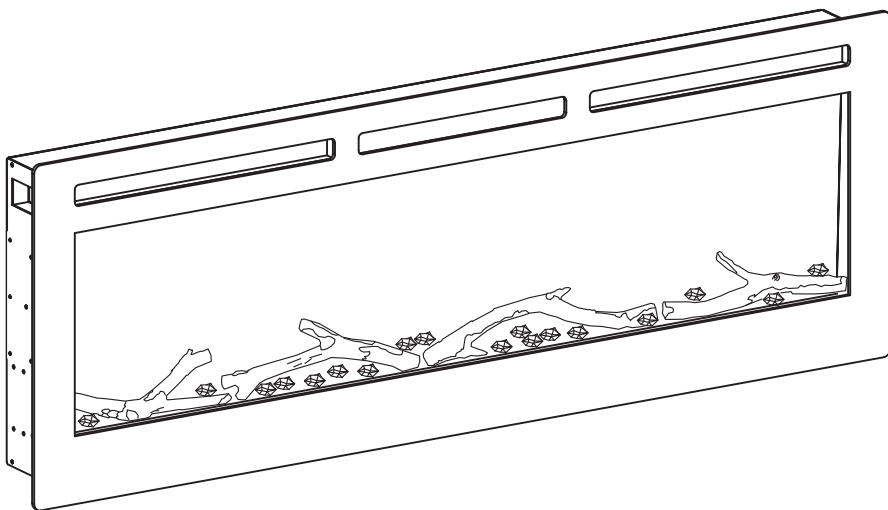


SMART FIREPLACE CONNECTION GUIDE



KEEP THIS USER MANUAL FOR FUTURE REFERENCE.

Contents

Connect to AIR.ai App 02

Connect to Alexa..... 06

Connect to Google Assistant 11

Connect to AIR.ai App

Use the AIR.ai App to control your electric fireplace from your iPhone or Android device even when you are away from the home.

System Requirements

- Supported wireless routers must have an available 2.4 GHz operating frequency
- Standard: 802.11b/g/n bands
- Supported smartphone systems: Android 6.0 or later
iOS 11.0 or later

Operation Guide

Please scan this QR code to watch the step-by-step guiding video.

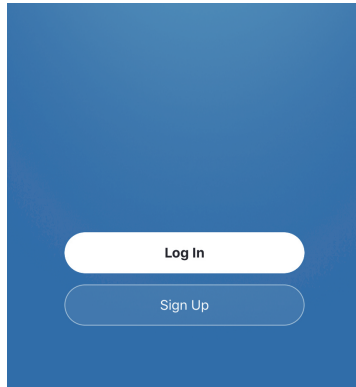
A. Scan the QR code below or search 'AIR.ai' on App Store or Google Play and download it.



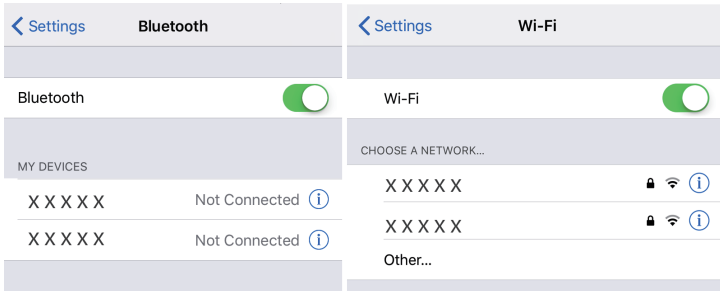
AIR.ai



B. Launch the AIR.ai App and log in to your account (sign up for your first use).



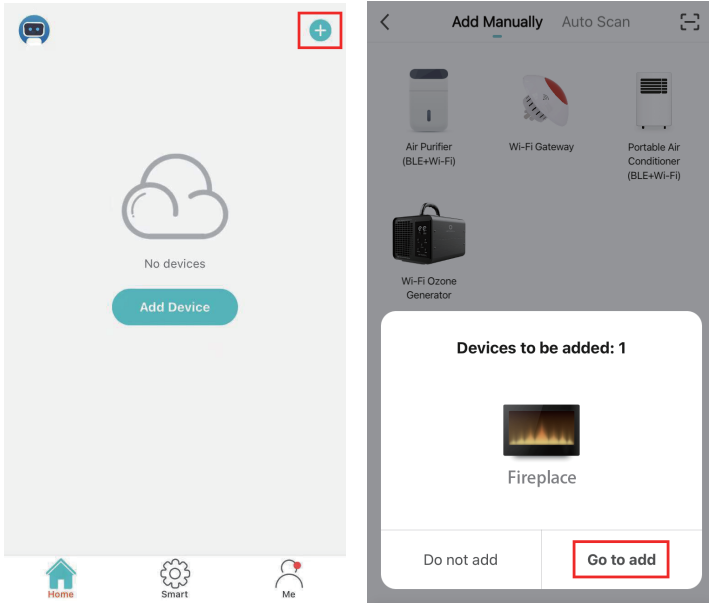
C. Turn on the Bluetooth of your phone and connect your phone to your Wi-Fi.



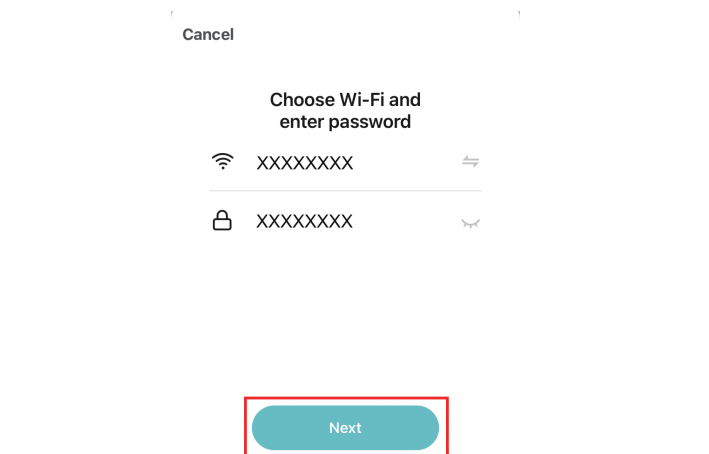
D. Make sure the fireplace is plugged in and is in standby mode (not powered on). Press the power button for 6 seconds to enter the Wi-Fi pairing mode. The screen will keep flashing 'SL'.



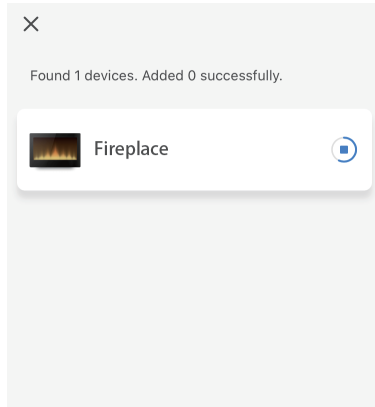
E. Back to the AIR.ai App. Press the '+' button in the top right corner. The App will search for the fireplace automatically. Press the 'Go to add' button to add your fireplace.



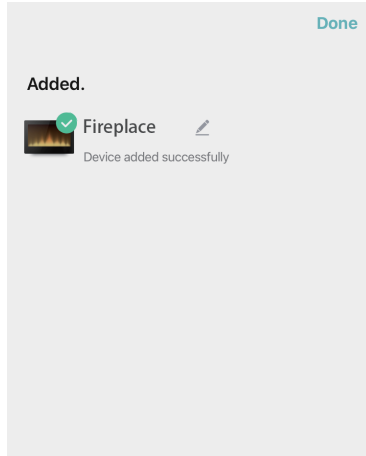
F. Choose your Wi-Fi (the one your phone is connected to) and enter the password. Press the 'Next' button to continue.



G. The AIR.ai App starts connecting to your device. It may take some time, please wait patiently.



H. Once you have set up the connection, you will find your fireplace in the device list. You can rename your device and get started now.

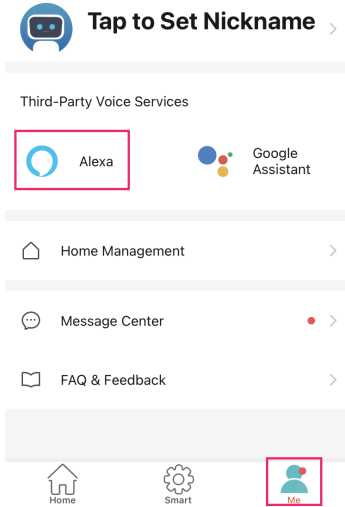


Connect to Alexa

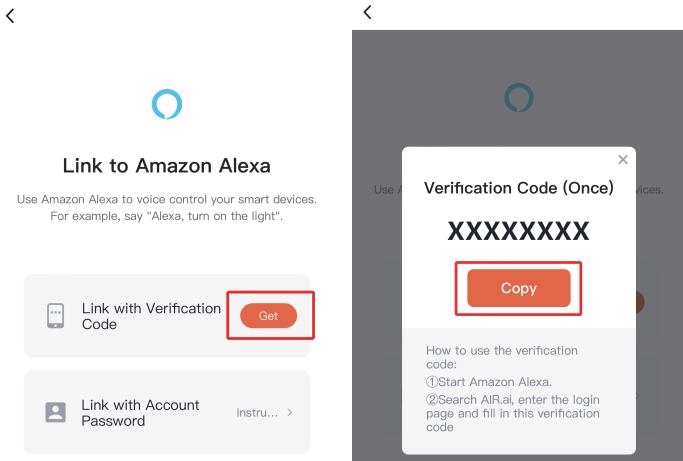
NOTE: Please ensure the fireplace is connected to the AIR.ai App before connecting to Alexa.

Make sure the Alexa App is installed and logged in, and your Amazon Echo device is powered on and connected to your Wi-Fi.

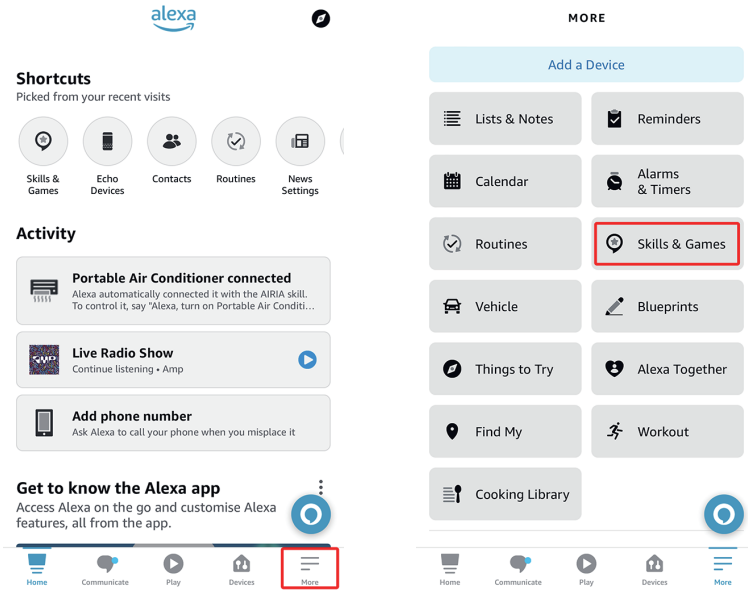
A. Press the 'me' button at the bottom of the AIR.ai App. Choose 'Alexa' in the 'Third-Party Voice Services' menu.



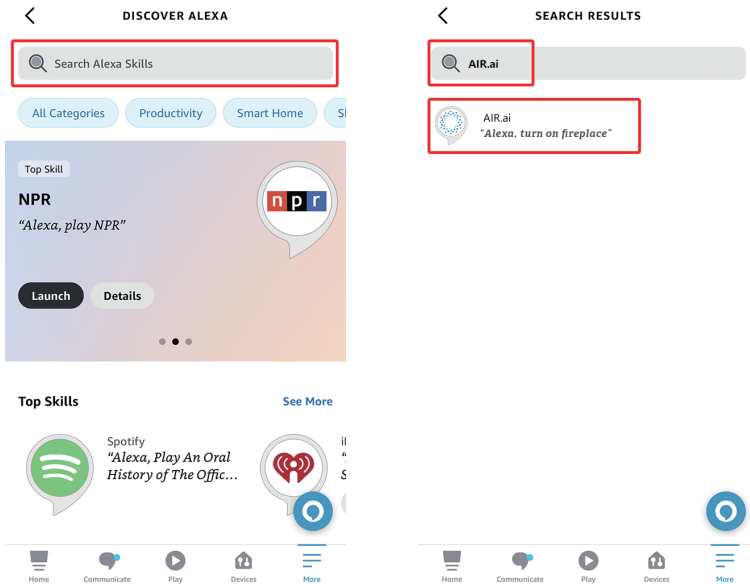
B. Choose 'Link with Verification Code' and click 'Get' > 'Copy' to copy the Verification Code.



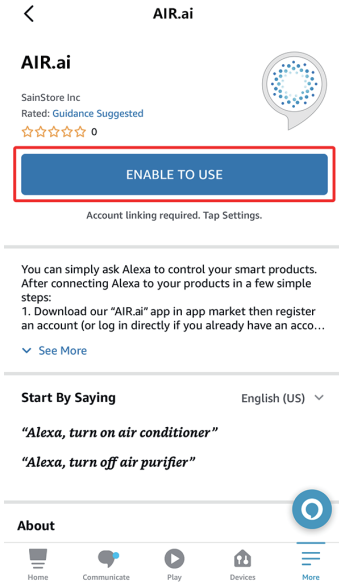
C. Open the Alexa App, at the bottom right corner of the Home page click **'More'** > **'Skills & Games'**



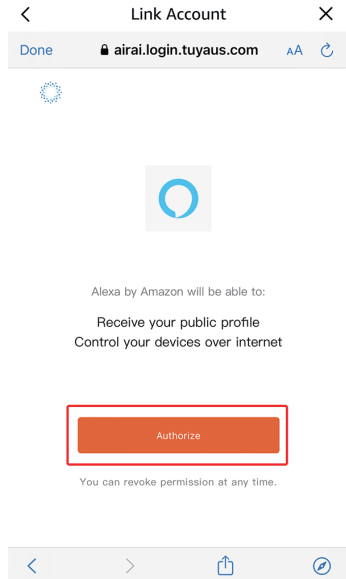
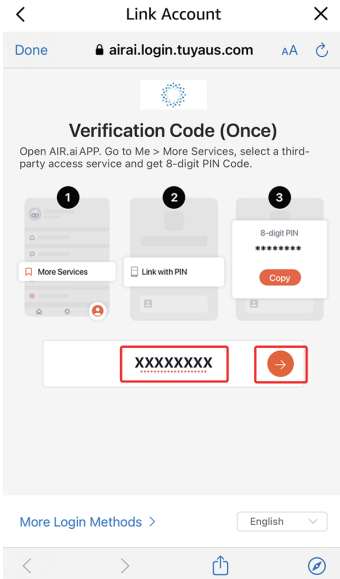
D. Enter **'AIR.ai'** on the search bar, and click AIR.ai App on the **'SEARCH RESULTS'** page.



E. Click 'ENABLE TO USE' button to enable the skill.



F. Paste the 'Verification Code' and click '→' button > 'Authorize' button.



G. Click 'Next' button > 'Set Up Device' button> 'Done' button.

ACCOUNT LINKING



SETUP



Your AIR.ai account has been successfully linked.

Next, continue to discover your device



1 device found and connected

Your device has been added to your Alexa account. Next, continue setting up your device.

Next

Set Up Device

SETUP



Fireplace is set up and ready to use

To control it, say:

"Alexa, turn on Fireplace."

Done

Now you can control the fireplace via Amazon Echo device.

Function	Value	Voice Commands
Power	ON/OFF	"Alexa, turn on <device name>" "Alexa, turn off <device name>"
Flame	ON/OFF	"Alexa, turn on flame on <device name>." "Alexa, turn off flame on <device name>."
Sound	ON/OFF	"Alexa, turn on sound on <device name>." "Alexa, turn off sound on <device name>."
Heater	Temperature setting / OFF	"Alexa, set the temperature to 60°F/65°F /70°F/75°F/80°F/85°F/90°F/95°F/99°F/OFF on <device name>" "Alexa, set the temperature to 16°C/18°C /21°C/24°C/27°C/29°C/32°C/35°C/37°C/OFF on <device name>"

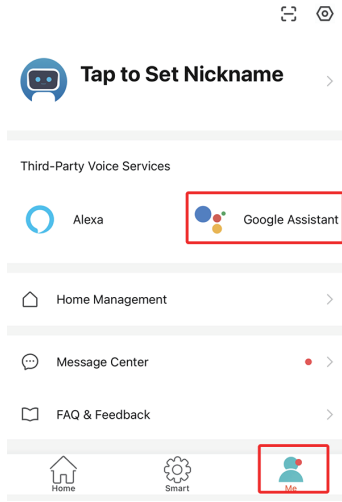
Note: The default <device name> is Fireplace, the device can be renamed in the AIR.ai App.

Connect to Google Assistant

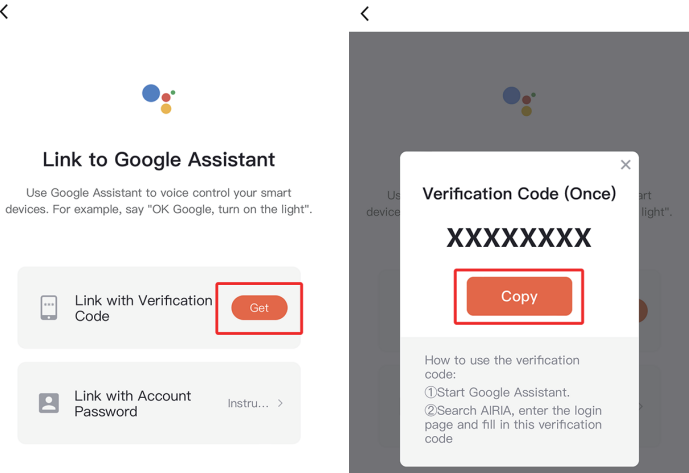
NOTE: Please ensure the fireplace is connected to the AIR.ai App before connecting to Google Home.

Make sure the Google Home App is installed and logged in, and your Google Home device is powered on and connected to your Wi-Fi.

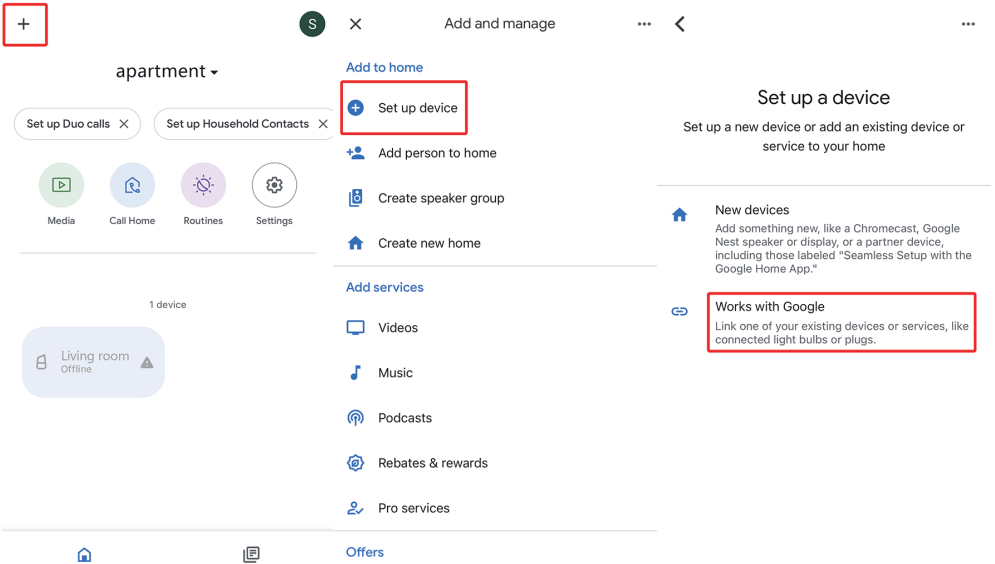
A. Press the 'me' button at the bottom of the AIR.ai App. Choose '**Google Assistant**' in the 'Third-Party Voice Services' menu.



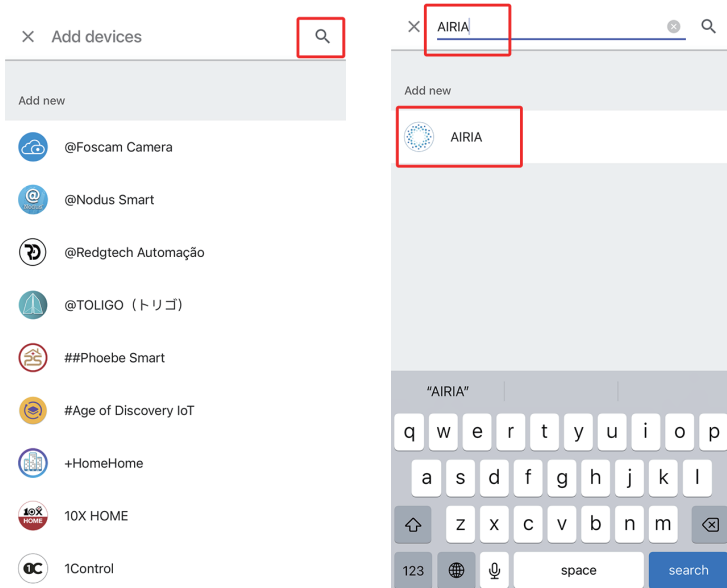
B. Choose '**Link with Verification Code**' and click '**Get**' > '**Copy**' to copy the Verification Code.



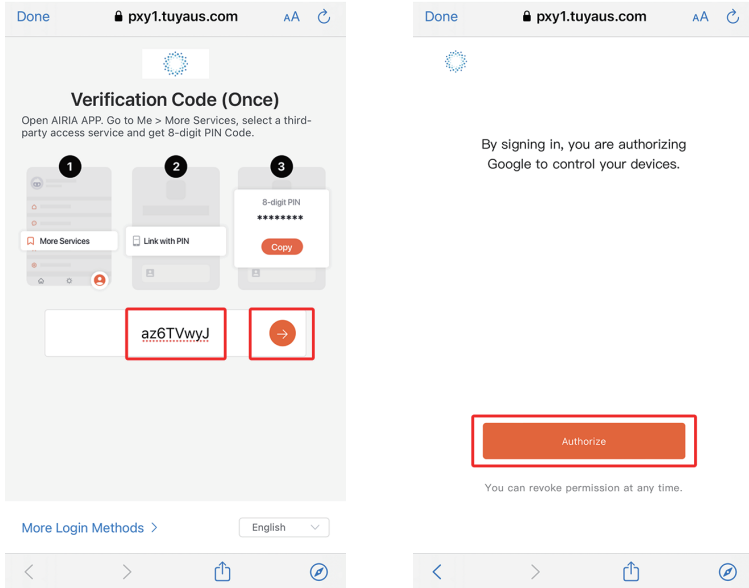
C. Open the Google Home App, at the top left corner of the Home page, click '+' > 'Set up device' > 'Work with Google'



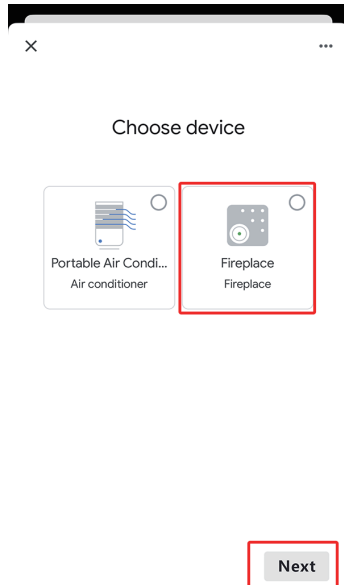
D. Click the Search icon 'Q' at the top right corner and enter 'AIRIA', then click AIR.ai App.



H. Pasta the 'Verification Code' and click '➔' button > 'Authorize' button.



E. Choose 'Fireplace' at the 'Choose device' menu and click the 'Next' button.



Now you can control the fireplace via Google Home device.

Function	Value	Voice Commands
Power	ON/OFF	"Ok Google, turn on <device name>" "Ok Google, turn off <device name>"
Flame	ON/OFF	"Ok Google, turn on flame on <device name>." "Ok Google, turn off flame on <device name>."
Sound	ON/OFF	"Ok Google, turn on sound on <device name>." "Ok Google, turn off sound on <device name>."
Heater	Temperature setting / OFF	"Ok Google, set the temperature to 60°F/65°F /70°F/75°F/80°F/85°F/90°F/95°F/99°F/OFF on <device name>" "Ok Google, set the temperature to 16°C/18°C /21°C/24°C/27°C/29°C/32°C/35°C/37°C/OFF on <device name>"

Note: The default <device name> is Fireplace, the device can be renamed in the AIR.ai App.