



Thank you for purchasing a Snap-Loc Cargo Control Systems product!

# Snap-Loc Dolly System Manual

## Limitations

The Cargo on the Dolly should not exceed a maximum weight of 1,200 lbs evenly distributed across the entire surface. When loading cargo place cargo gently on dolly surface, if cargo is dropped on the dolly it may cause structural damage not covered under warranty. Do not over tighten straps, this may cause damage to strap, cargo, anchor point, Snaplocs and dolly. Do not expose straps to sharp edges, acids, chemicals or items that may cause damage to fabric. Always make sure nothing is close to or touching the E-Fitting release lever when in use as this may cause it to release. After strapping cargo, always secure leftover unused strap. If secured cargo has sharp edges or is subject to emitting heat or chemicals it may cause failure of straps. Push/Panel bars are not to exceed a maximum torque of 400 Lbs. Weight limits on Push/Panel bars will be significantly reduced if used on an incline. If your kit came with individual bolt on

Snaplocs (a.k.a. Loc-Downs) strap anchors they are rated at 3000 pounds Break Strength and 1,000 pounds working load. Though Snaplocs can be used almost anywhere, it is your responsibility to determine suitability of this product for any particular use. This product is only as strong as stated when what you anchor them to is as equally strong. See website for installation, use and warranty information on Snaplocs and other Snap-Loc Cargo Control Systems Accessories. Storage of all Snap-Loc products should be in a dry place not susceptible to elements of weather. Always read and follow all installation and usage instructions carefully. Keep in mind that some parts of this product may scratch or cause damage to cargo and vehicle if not properly protected and secured. If there are any further questions contact your local Snap-Loc dealer or one of our customer service representatives.

## Warranty

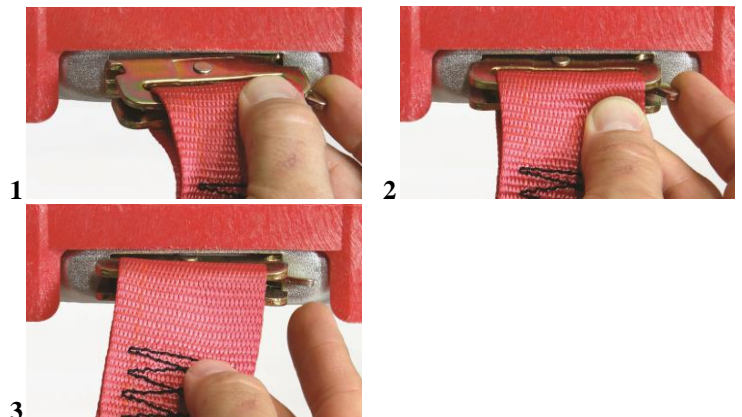
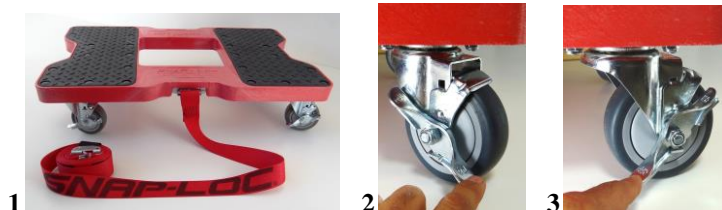
The Snap-Loc Dolly, Snaplocs (a.k.a. Loc-Downs), Straps and system Accessories are warranted to be free from defects in material and workmanship for a period of 90 days (warranty period) from date of purchase, or if you placed a special order with us from date of receipt of product. Some items may have up to a 1 year warranty depending on store of purchase (check with Snap-Loc or store of purchase). During the warranty period Snap-Loc will, at its option, repair or replace without charge any part of our product found to be defective in material or workmanship (shipping cost may be subject to charge). This warranty does not extend to any product which has been subject to misuse, abuse, negligence, accident, alteration, improper installation, over tightening of straps, superseding recommended weight limits, scratches, discoloring, damaged caused by usage in temperatures below freezing, contact with items over 150 degrees, wetness, extreme weather conditions, exposure to chemicals, and unauthorized repair. If product becomes structurally damaged immediately discontinue use. In no way will Snap-Loc Cargo Control Systems, LLC (Snap-Loc) be liable for special, direct, indirect or

consequential damages, loss of vehicle, cargo, profits, personal injury, death or the like for any reason. Please contact our customer service department or the store of purchase for more details. The literature included with this product has been written for your safety. If you do not accept the terms and conditions herein do not use this product and return it within 7 days after purchase. By keeping this product you are agreeing to these terms and conditions. If returning products, return them to the store of purchase within the warranty period. No returns will be accepted after the warranty period unless special provisions have been made with the store of purchase (see store of purchase for further details). If you purchased your product directly from Snap-Loc please contact the Snap-Loc Customer Service Department for a Return Merchandise Authorization (RMA) number and return shipping instructions. Products returned to Snap-Loc without an RMA number will not be accepted. After receipt of an RMA number, the defective product must be returned to Snap-Loc within 30 days of the RMA approval of it will result in loss of refund or replacement.

## How to Use

**The Snaploc Dolly:** *Figure 1;* Dolly was designed to hold up to 1,200 lbs of evenly distributed weight. Safety should be your number one concern and use of weight belts, gloves and similar safety items should be used. When lifting heavy objects always get assistance from other people. Load your cargo evenly and with balanced distribution across the surface. We recommend using the strap attachment feature for moving all loads as cargo may fall off if not properly strapped down. Be cautious when using on hills and uneven surfaces as this can be dangerous and cause considerable damage to cargo and/or injury to persons. *Figure 2;* To help keep the dolly from rolling, push down the "ON" side of the casters brake pedal. *Figure 3;* To release the brake, push the "OFF" side of the casters brake pedal. The casters were designed to roll across smooth hard surfaces and should not be used on dirt or rough surfaces. Always use and store in a dry place.

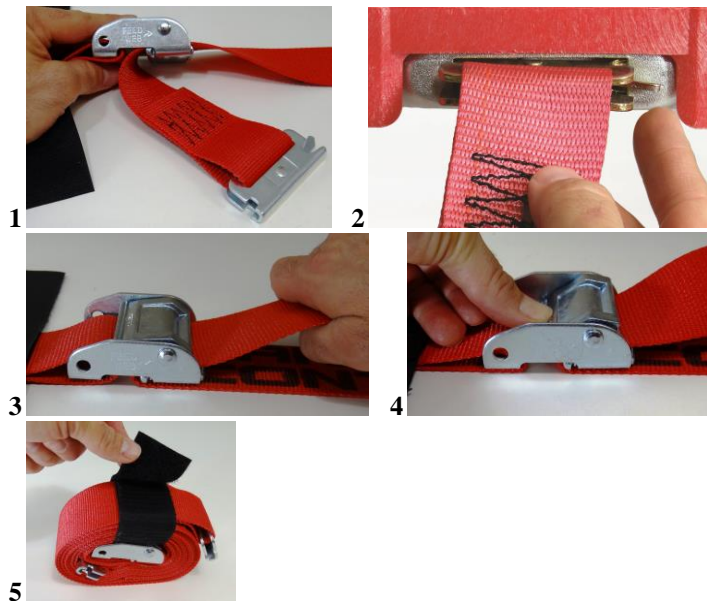
**E-Fitting and Snaplocs:** *Figure 1;* When installing the E-Fitting strap end into a Snaploc or Dolly frame strap anchor (a.k.a. Snaploc) simply pull back on the lever and insert shown end into Snaploc. *Figure 2;* Insert rest of fitting fully into the Snaploc. *Figure 3;* Release lever and click securely in place. Make sure the E-Fitting strap end is as shown in *Figure 3* fully secured in its place before use. Always make sure nothing is close to or touching the E-Fitting release lever when in use as this may cause strap to release.



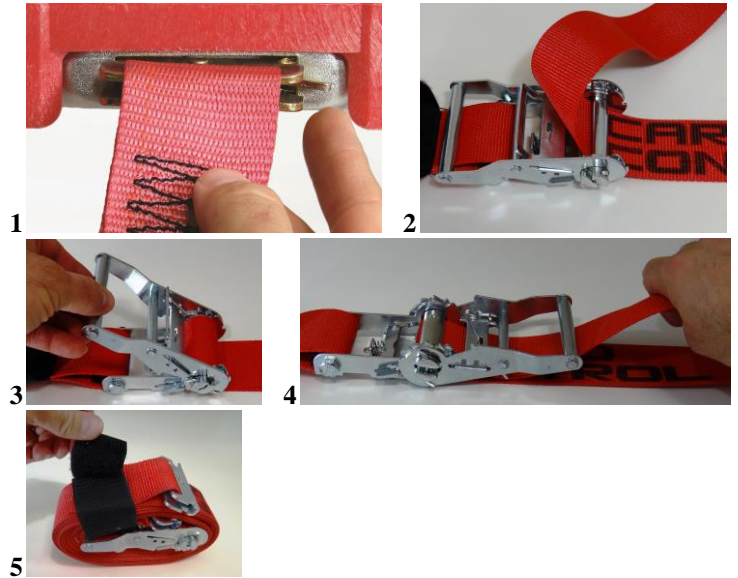
**Push/Panel Bars:** *Figures 1-2;* Push/Panel bars are not to exceed a maximum weight of 1,200 Lbs. on dolly when in use. Weight limits on Push/Panel bars will be significantly reduced if used on an incline. Push/Panel bars are not to exceed 400 pounds of torque. Please be aware that leaning cargo against the bars at an angle may cause the Cargo Dolly to dangerously fall over. Use caution when inserting bars into each other as they may pinch fingers if gloves are not used. *Figures 3-4;* Insert Loc-Hitch into end of dolly frame until spring buttons securely click in place. *Figures 5-6;* Place the two connector pins into Loc-Hitch until spring buttons securely click in place as shown in Figure 6. *Figure 7;* Insert connector pin between curved bars (If Panel Bar set add the 15 inch extension bar in the middle). *Figure 8;* Slip connected curved bars over connector pins in Loc-Hitch until clicked fully in place. To release, simply push the spring button low enough to allow the bars to slide apart. A slight twisting or shaking motion may help release the spring buttons. When using bars make sure all the weight is not supported by the strength of the spring buttons as they are not designed to withstand the torque of weight. If Loc-Hitch or connector pins become bent, this can be easily corrected by using a rubber mallet to set the Hitch or pins back to a proper angle.



**Cam E-Strap:** *Figure 1;* When using the Cam Buckle strap, feed strap through cam buckle as instructed on side of cam. *Figure 2;* Connect both ends of strap securely to Snaplocs or Dolly frame strap anchor (a.k.a. Snaploc). *Figure 3;* Pull on end of strap until strap is securely tightened. *Figure 4;* To loosen strap push down on lever end of cam buckle and loosen as needed. Always make sure nothing is close to or touching the E-Fitting release lever when in use as this may cause strap to release. *Figure 5;* If your strap has a hook & loop fastener use it for fastening excess end of strap and for storage.



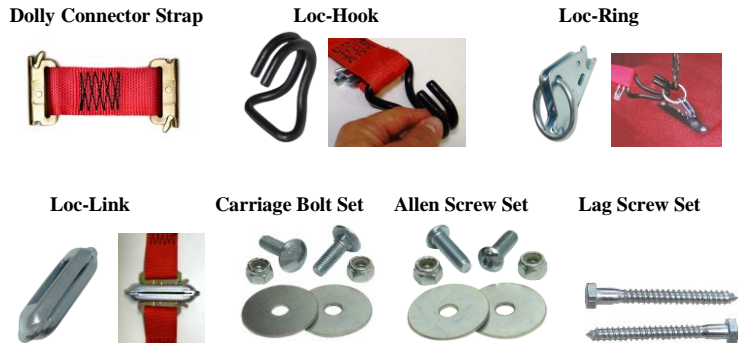
**Ratchet E-Strap:** *Figure 1;* Connect both ends of strap securely to Snaplocs or Dolly frame strap anchor (a.k.a. Snaploc). *Figure 2;* Feed end of strap through ratchet receiver as shown and pull through ratchet until almost snug on your cargo. *Figure 3;* Begin moving ratchet handle up and down until cargo is secure and there is a minimum of two revolutions of strap wrapped around the center pivot. Be sure not to over-tighten strap as this may cause damage to connection points, Dolly and cargo. *Figure 4;* To release, pull back on the ratchets release lever and open handle 180 degrees and pull on strap until loose. *Figure 5;* If your strap has a hook & loop fastener use it for fastening excess end of strap and for storage. Depending on amount of use and weathering, mechanisms may become restricted. A very small amount of lubrication may be applied only on the mechanical metal parts at the location causing the restriction.



**Snaploc E-Strap Anchors:** Coordinate your moving needs with Snaplocs! Snaplocs are E-Track singles and can be fastened almost anywhere to anchor your E-Straps securely and exactly where you need them! Install on Pickups, Trailers, Flat Beds, Lumber Racks, Truck Bodies, Tool Boxes, Floors, Walls, Walls, Ceilings, on Axles, Motorcycles and more! When installing Snaplocs, it is your responsibility to determine the suitability of this product for any particular use. This product's break strength is rated at 3,000 lbs with a working load of 1,000 lbs when used with Snap-Loc 5/16" thick screws or bolts. See website for installation, use and warranty information.



**Other great Snap-Loc products...**



SNAP-LOC CARGO CONTROL SYSTEMS, LLC.  
5670 La Costa Canyon Court, Las Vegas, NV., U.S.A.  
800-798-4521 www.snaploc.com

(Created April 2012. Please check our website or store of purchase for any updates to this literature)