

MODEL :

Assembly Instruction

(BOX 1) HEADBOARD

NO	ITEM	QTY
A	HEADBOARD	1 PC

(BOX 2) FOOTBOARD, SIDE RAIL

NO	ITEM	QTY
B	FOOTBOARD	1 PC
C	SIDE RAIL	2 PCS
D	FOOTBOARD SIDE LEGS	2 PCS
E	FOOTBOARD CENTER LEGS	1 PC
F	SUPPORT LEG	4 PCS
G	SLAT	45 PCS
H	MIDDLE HOLDER	30 PCS
I	END HOLDER	30 PCS
J	CENTER RAIL	2 PCS
K	ROLLER	8 PCS
L	FOOTBOARD FRONT PANEL	2 PCS
M	STIFFENER SLAT (4 HOLES)	2 PCS

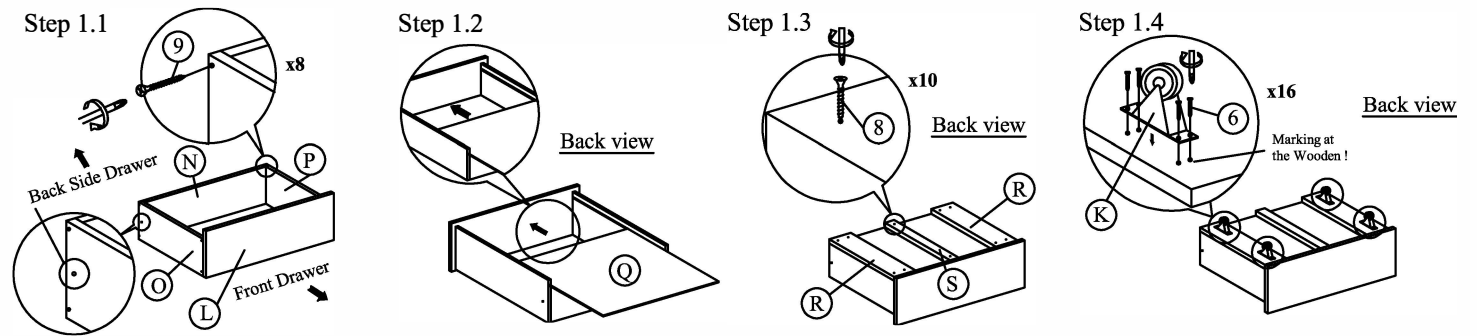
(BOX 3) DRAWER

NO	ITEM	QTY
N	FOOTBOARD BACK PANEL	2 PCS
O	LEFT SIDE PANEL	2 PCS
P	RIGHT SIDE PANEL	2 PCS
Q	FOOTBOARD BOTTOM PANEL	2 PCS
R	BOTTOM PANEL BIG SUPPORT WOOD	4 PCS
S	BOTTOM PANEL SMALL SUPPORT WOOD	2 PCS

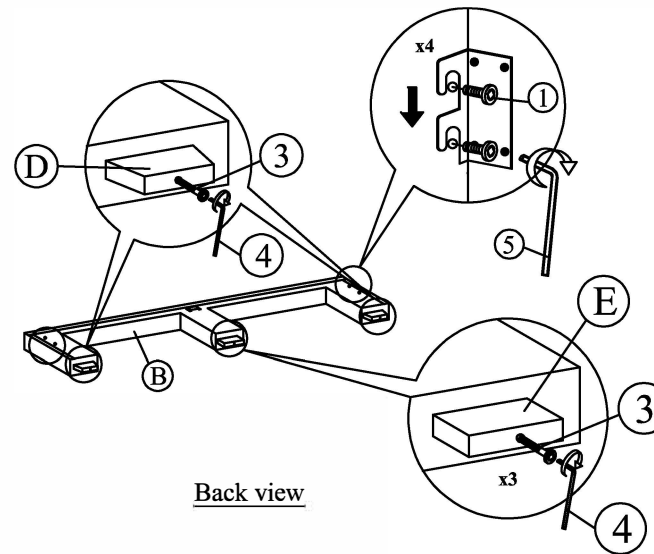
(BOX 2) HARDWARE LIST

NO	ITEM	QTY
1	JCBB M8 x 20MM	8 PCS
2	JCBC M6 x 40MM	4 PCS
3	JCBC M6 x 50MM	3 PCS
4	M4 x 100MM	1 PC
5	M5 x 70MM	1 PC
6	FLAT HEAD CHIPBOARD SCREW M4 x 16MM	32 PCS
7	FLAT HEAD CHIPBOARD SCREW M4 x 25MM	4 PCS
8	FLAT HEAD CHIPBOARD SCREW M4 x 32MM	28 PCS
9	FLAT HEAD CHIPBOARD SCREW M4 x 50MM	16 PCS
10	SMALL ADJUSTER	4 PCS
11	METAL STOPPER	4 PCS

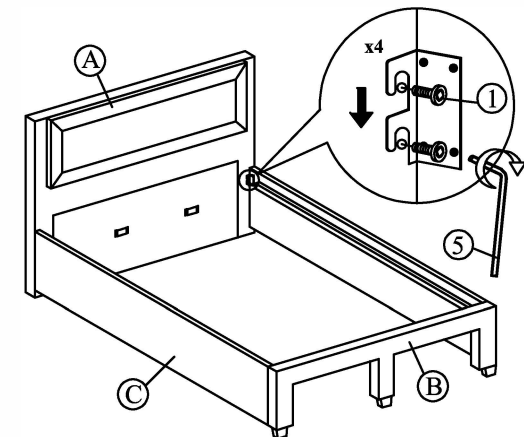
Step 1 : Assemble the footboard drawer by the step.



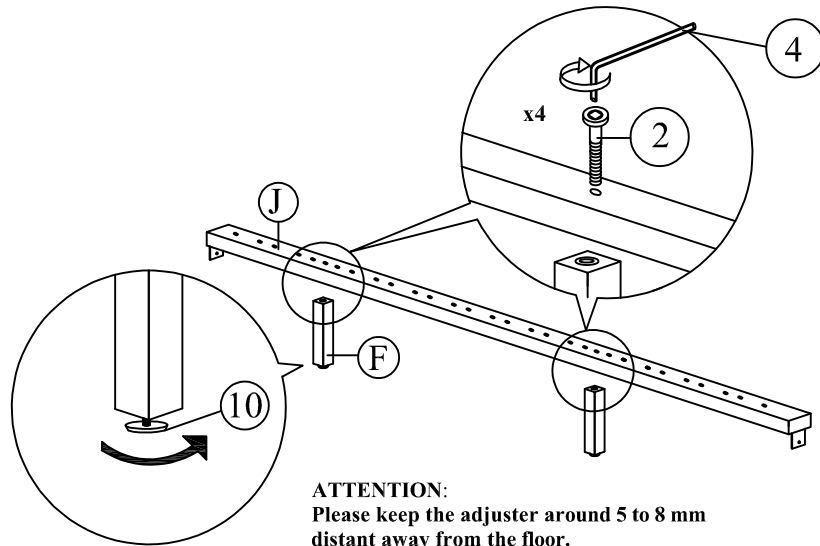
Step 2 : Tighten the legs (D,E) to the footboard (B) as shown.



Step 3 : Attach side rail (C) to headboard (A) and footboard (B) by pushing the bracket down to fit it.

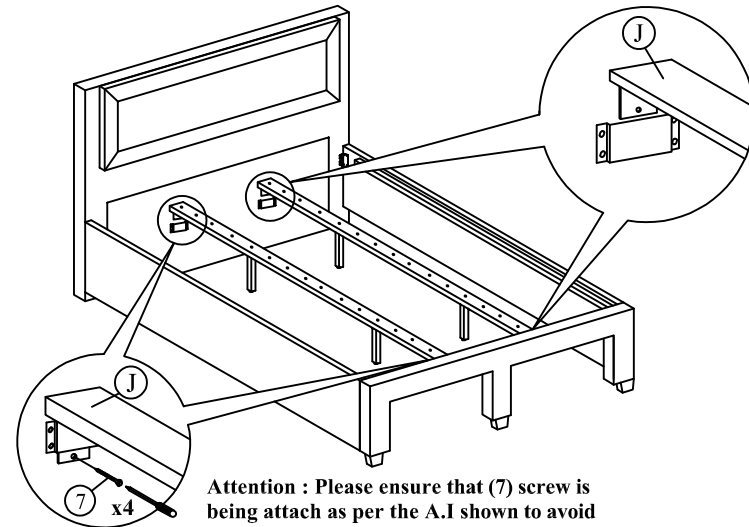


Step 4 : Attach the support legs (F) to the center rail (J) of the bed as shown.



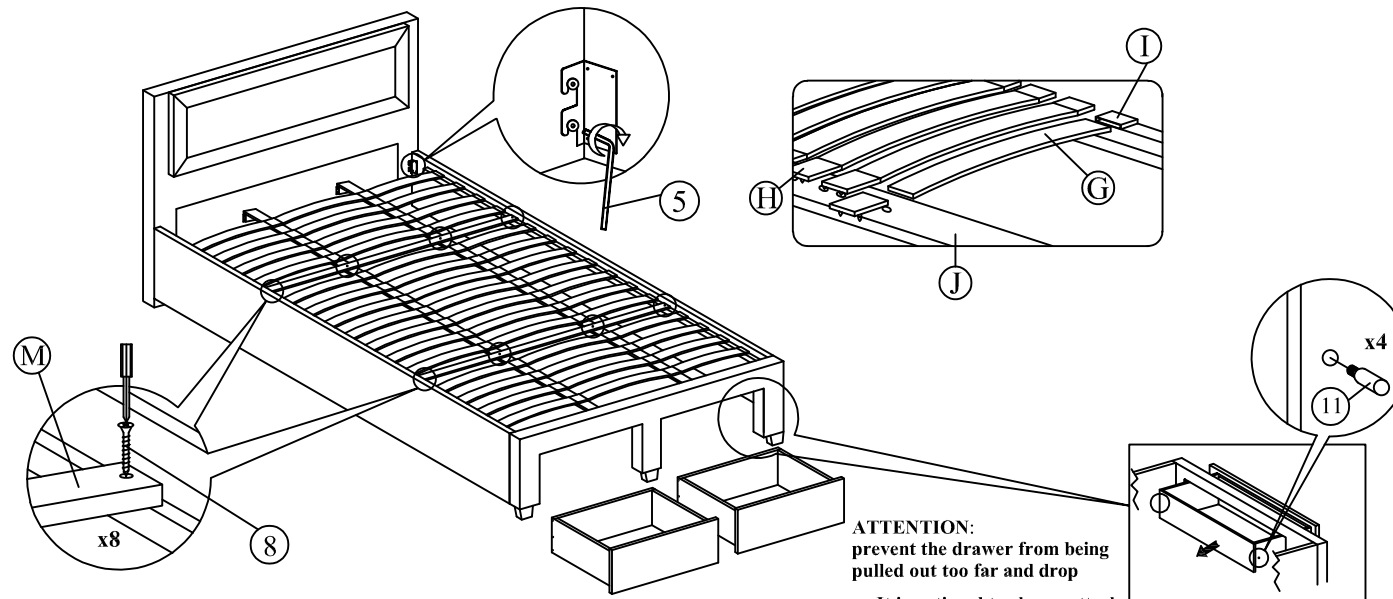
ATTENTION:
Please keep the adjuster around 5 to 8 mm distant away from the floor.

Step 5 : Slide the center rail (J) to the headboard (A) and footboard (B). Tighten screws (7) using screw driver (not included) to the headboard (A) and footboard (B).



Attention : Please ensure that (7) screw is being attach as per the A.I shown to avoid base being collapse.

Step 6 : Tighten all the 4 corner, follow by assembly of the slat holders with LVL slats as shown. Push the drawer to the footboard then only tighten the metal (11).



ATTENTION:
prevent the drawer from being pulled out too far and drop

It is optional to choose attach the drawer stopper.