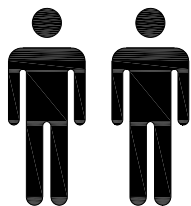


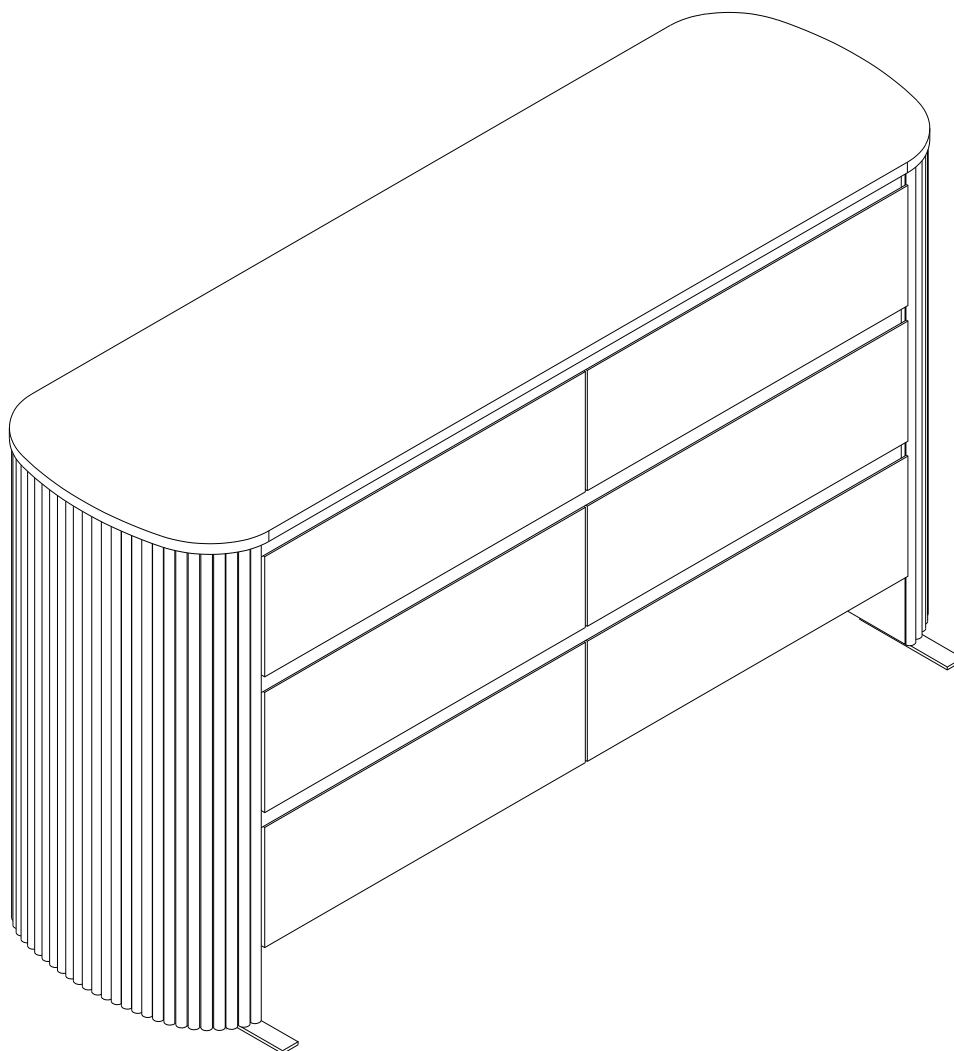
ASSEMBLY INSTRUCTION

If there are any questions during the assembly process.

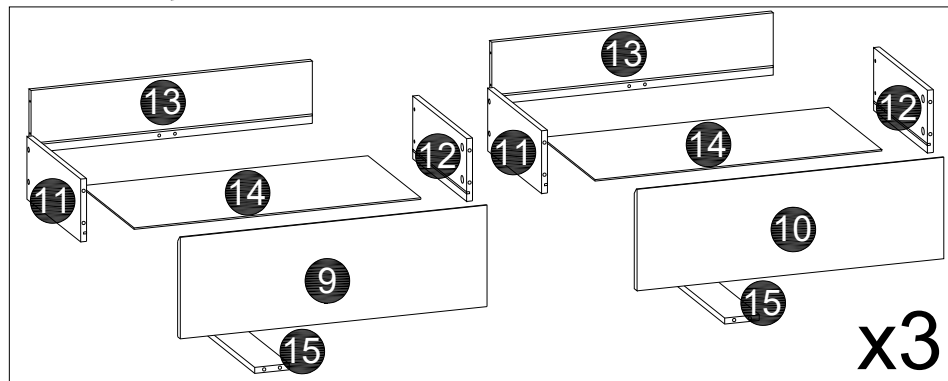
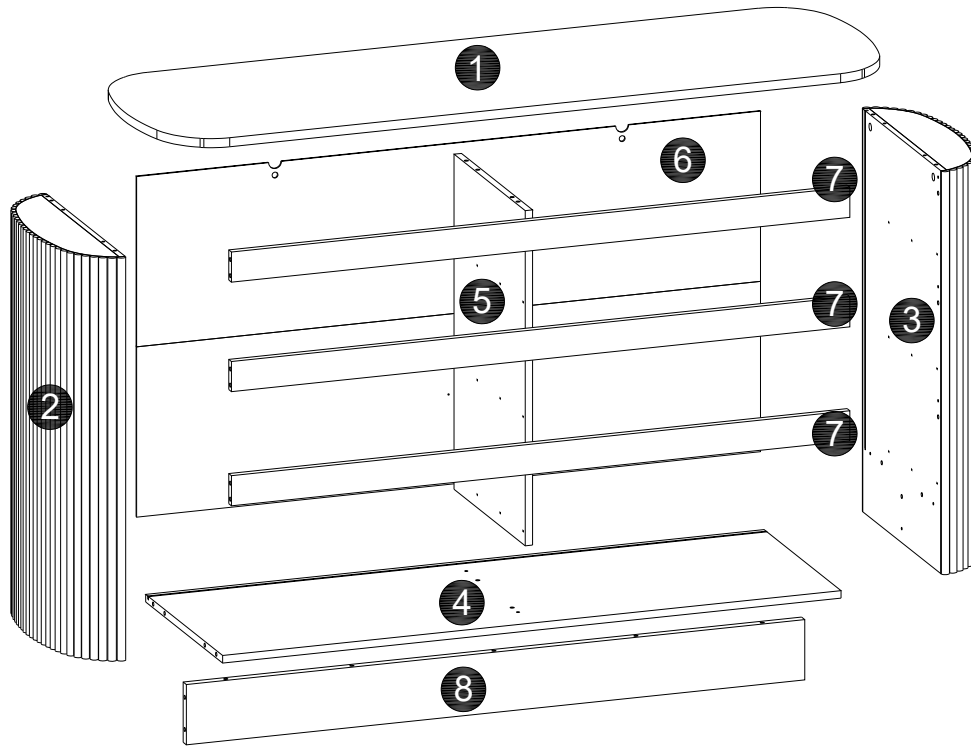
A video and description about the step you were stucked will help us to understand the problem quickly.



2 person required to
assemble this product

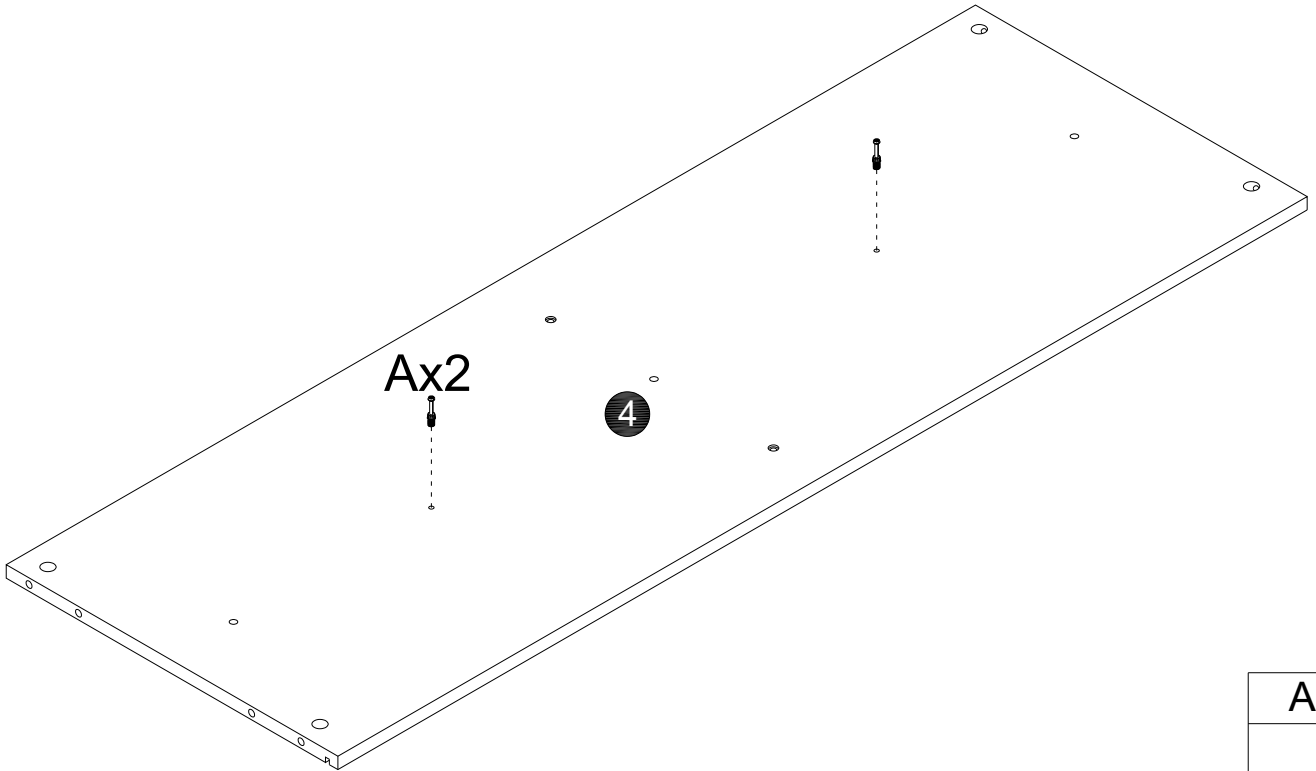


ASSEMBLY INSTRUCTION



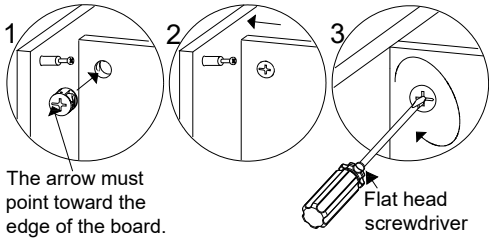
	A	x59	B	x59	C	x19	D	x4	E	x4							
	M6x35mm		Ø15mm		Ø8x30mm		Ø6x30mm		Ø65x5mm								
F	x2	G	x2	H	x2	I	x4	J	x38	K	x10	L	x12	M	x6	N	x6
50x15x5		160x25x5				M3.5x14mm		M5x38mm				M3.5x16mm		12"		12"	
O	x6	P	x6	Q	x72	R	x2	S	x4	T	x1	U	x2	V	x2	W	x7
12"		12"		M3.5x12mm		170x30x5		M6x16mm		M4x21x57				M5x38mm		Ø25	

1



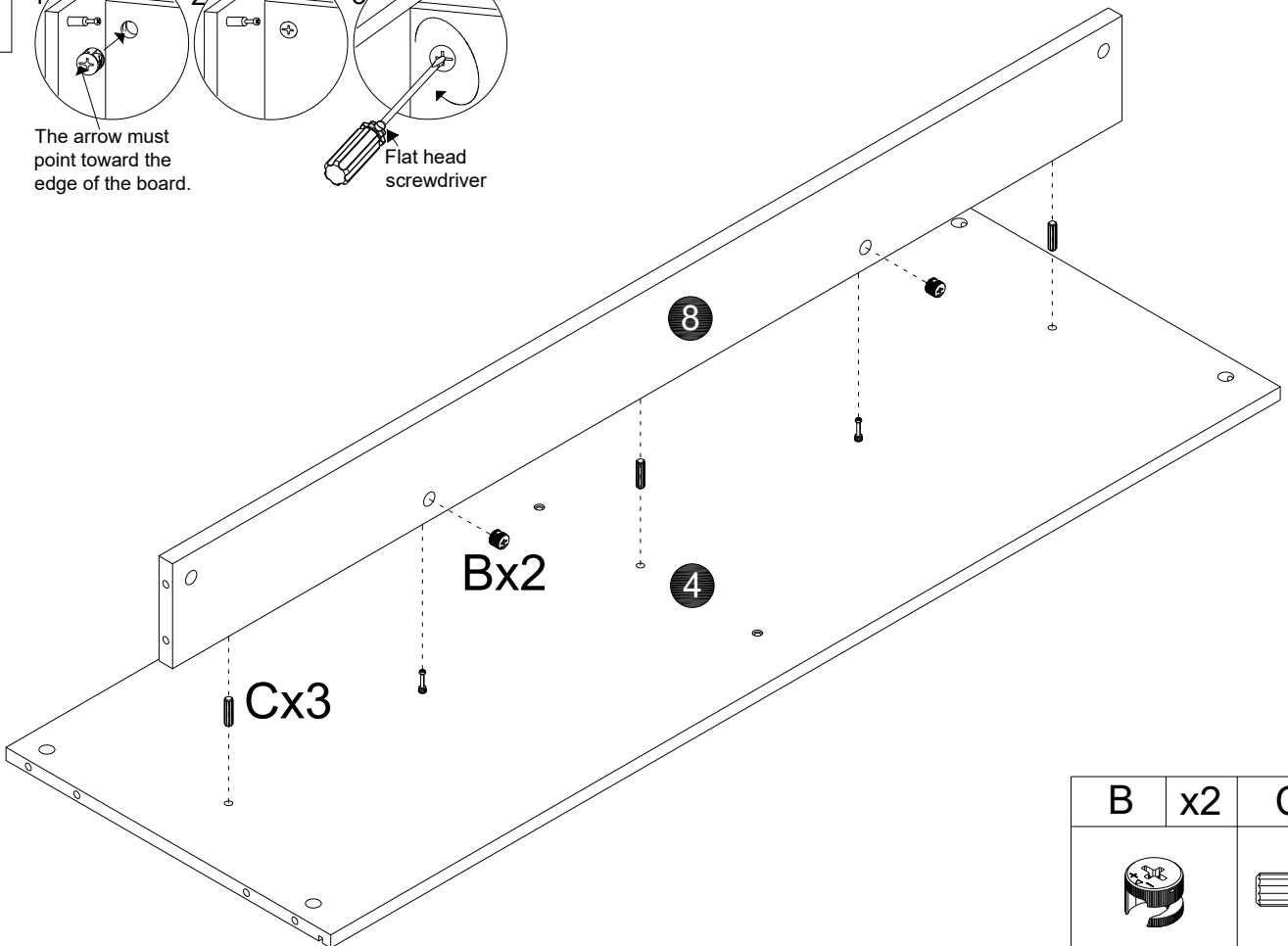
A	x2
M6x35mm	

2



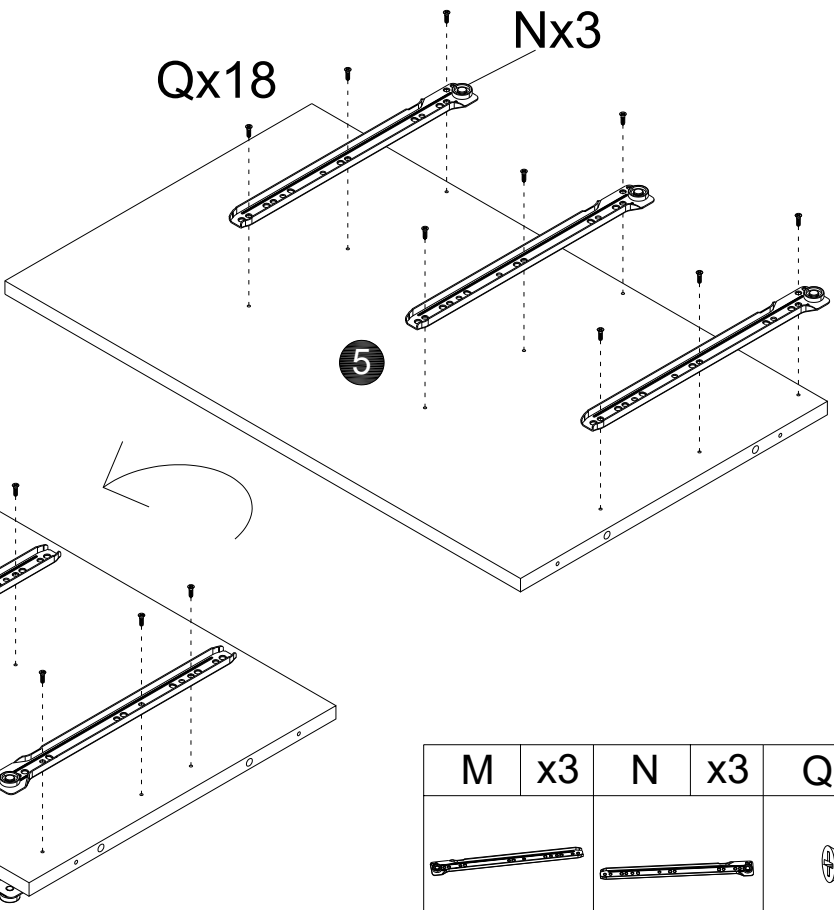
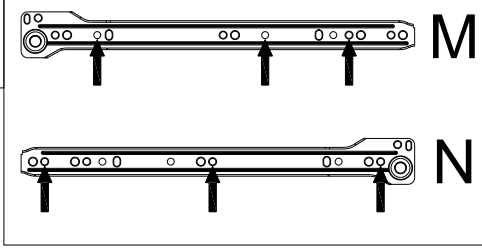
The arrow must point toward the edge of the board.

Flat head screwdriver



B	x2	C	x3
Ø15mm		Ø8x30mm	



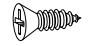
3



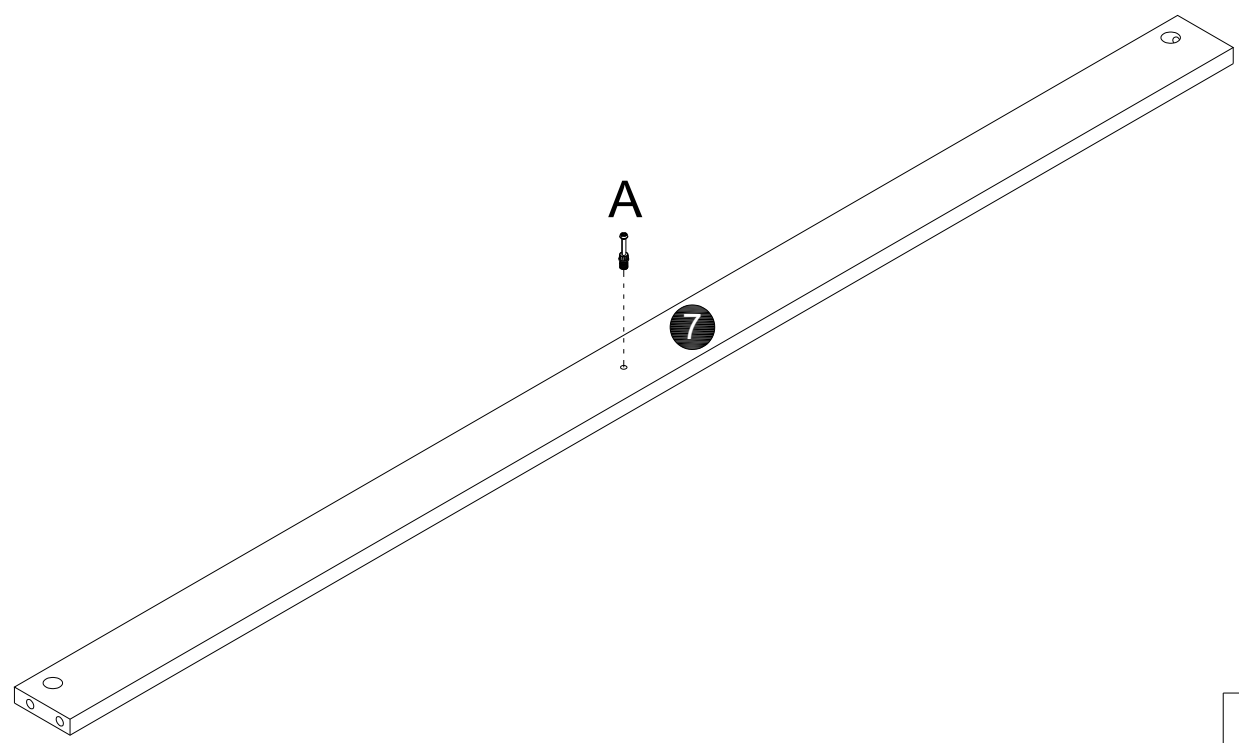
Mx3

Qx18

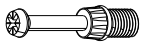
Nx3

M	x3	N	x3	Q	x18
					
12"		12"		M3.5x12mm	

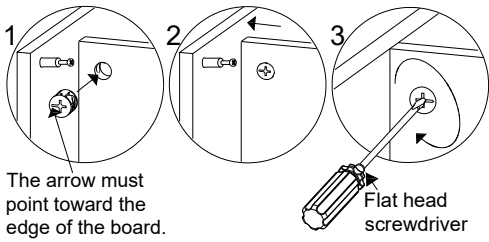
4



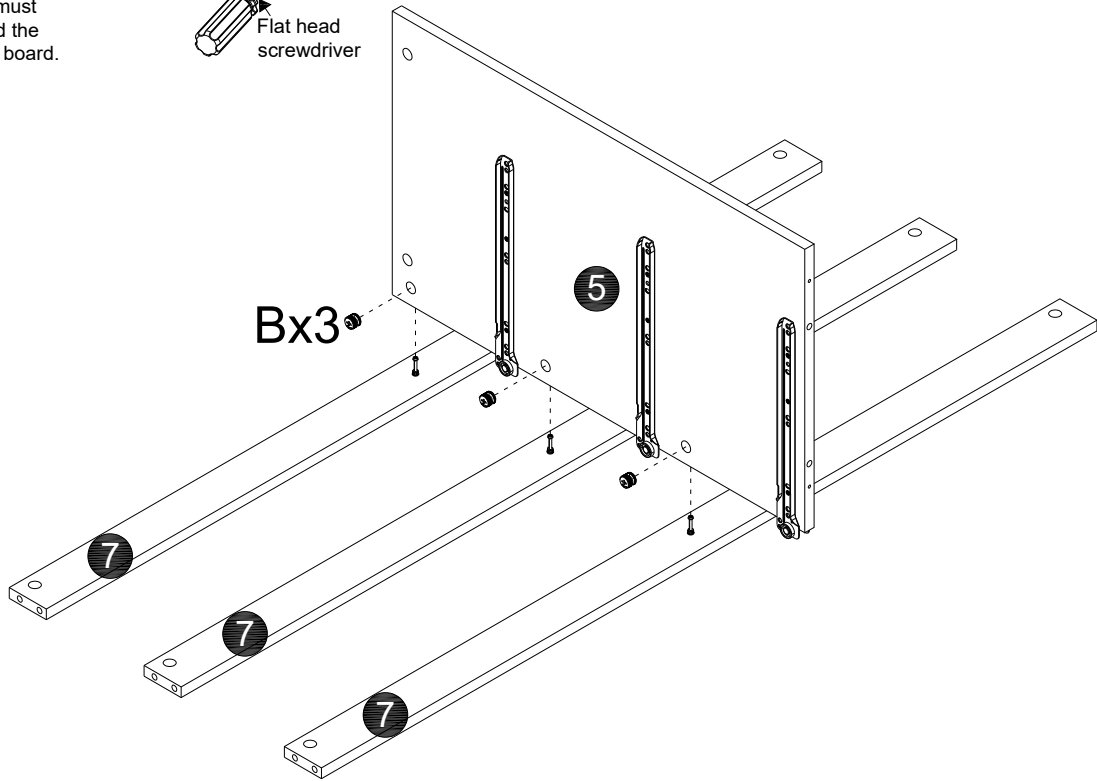
x3

A	x3
	
M6x35mm	

5

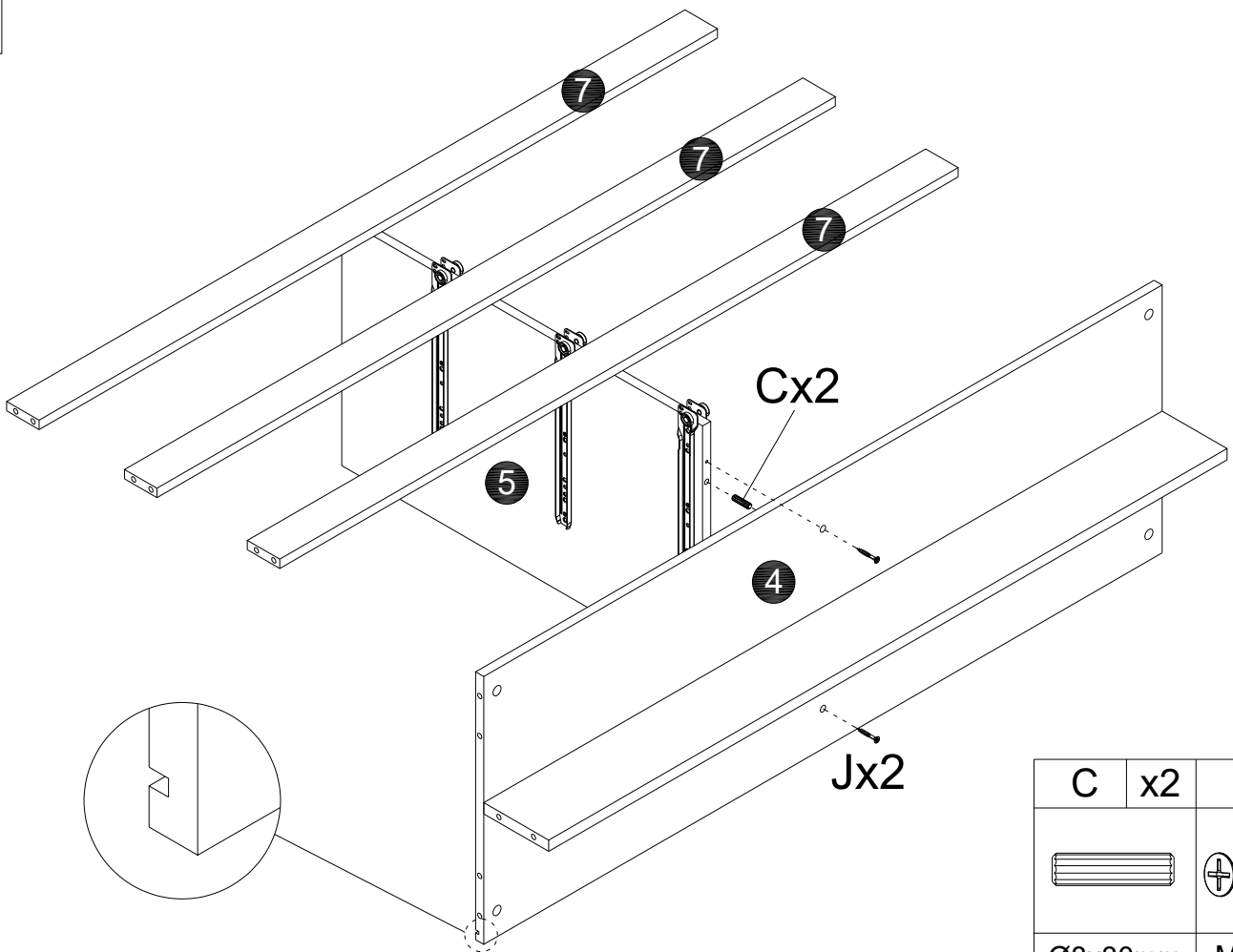


The arrow must point toward the edge of the board.



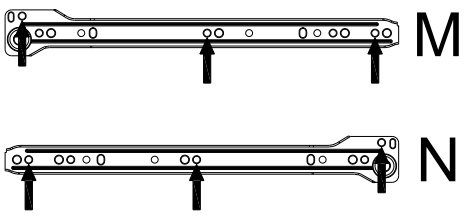
B	x3
Ø15mm	

6



C	x2	J	x2
Ø8x30mm		M5x38mm	

7






Mx3

2

Qx18

3

Nx3


M	x3	N	x3	Q	x18
					
12"		12"		M3.5x12mm	

8

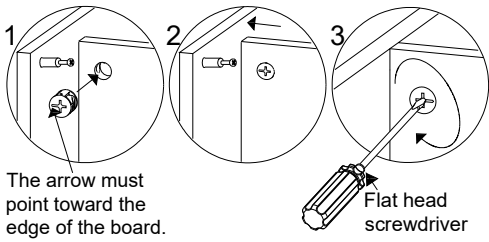
Ax12

2

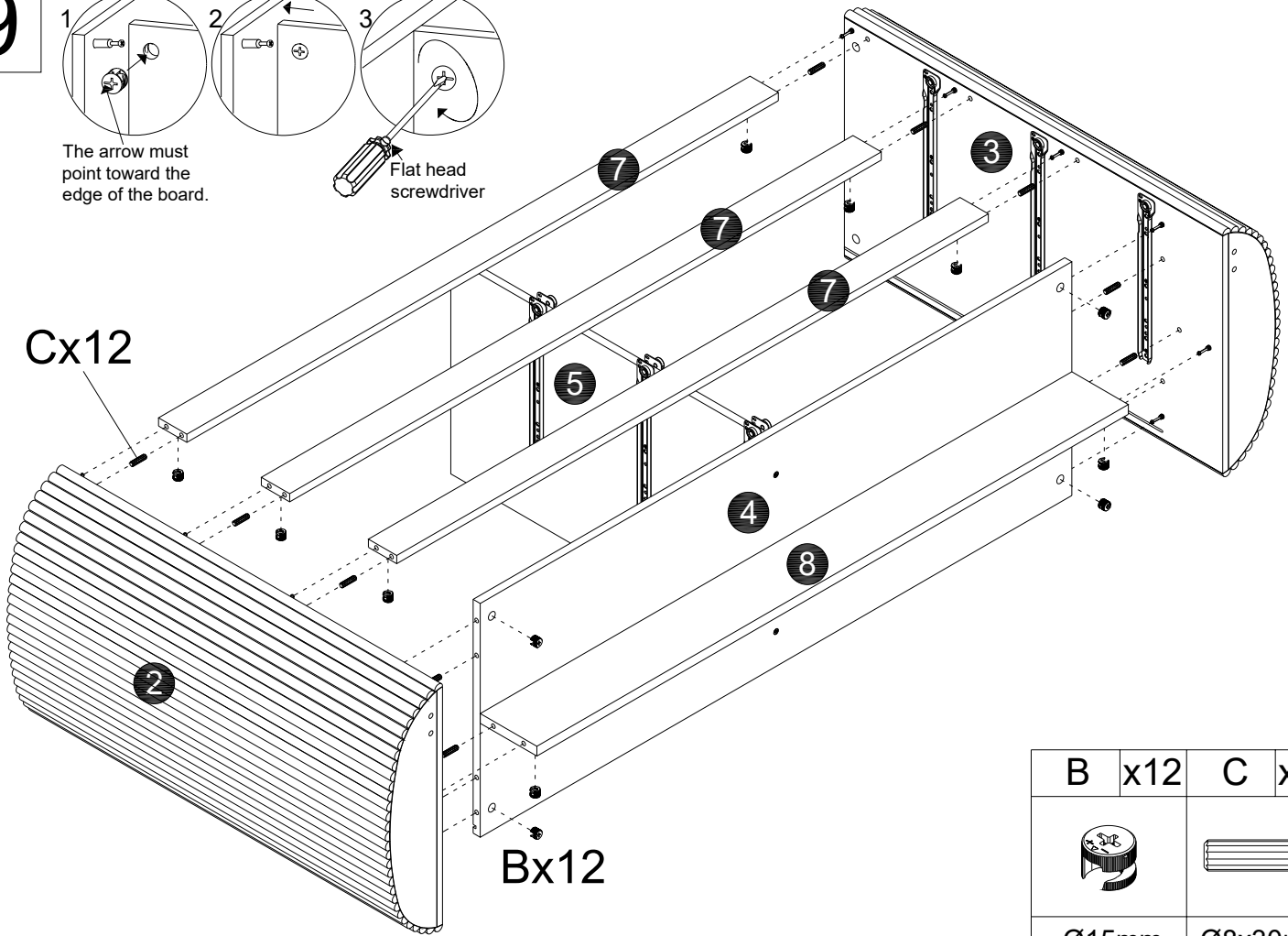
3



A	x12
	
M6x35mm	

9

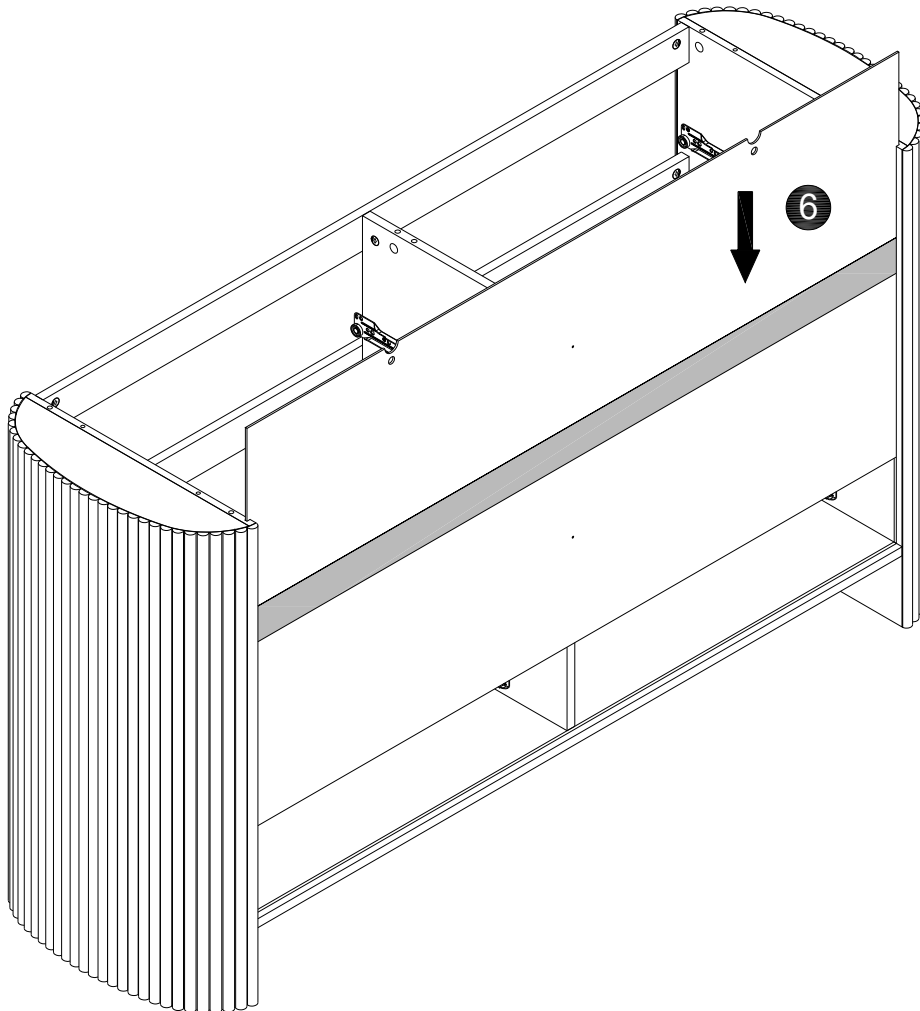


The arrow must point toward the edge of the board.

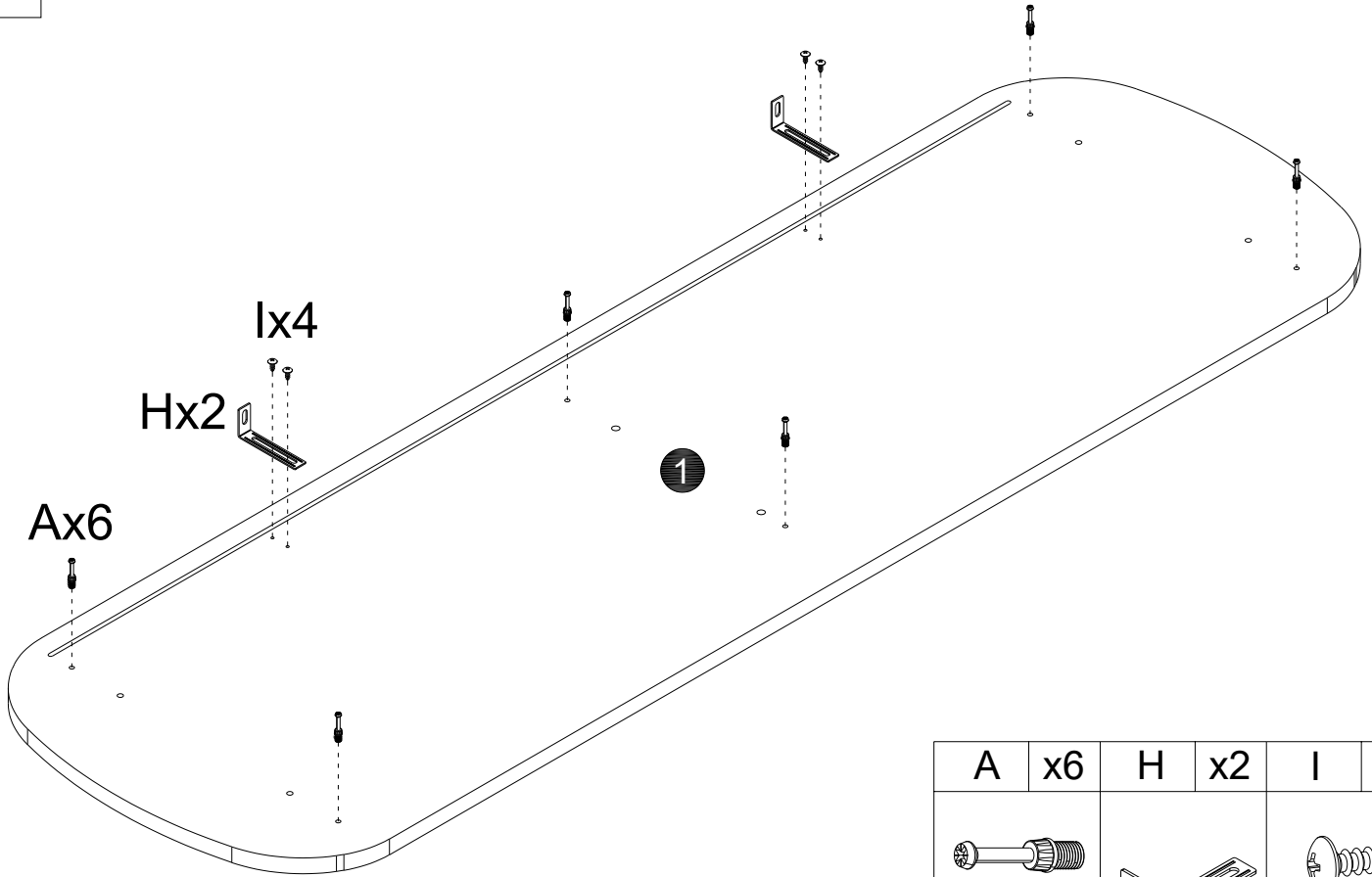


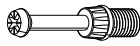
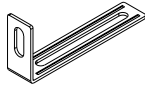
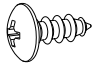
B x12	C x12
	
Ø15mm	Ø8x30mm

10

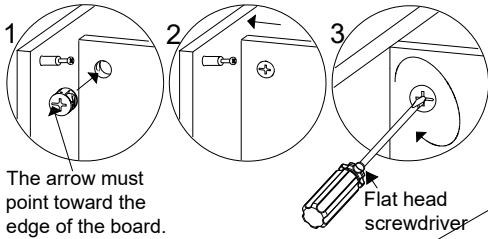


11



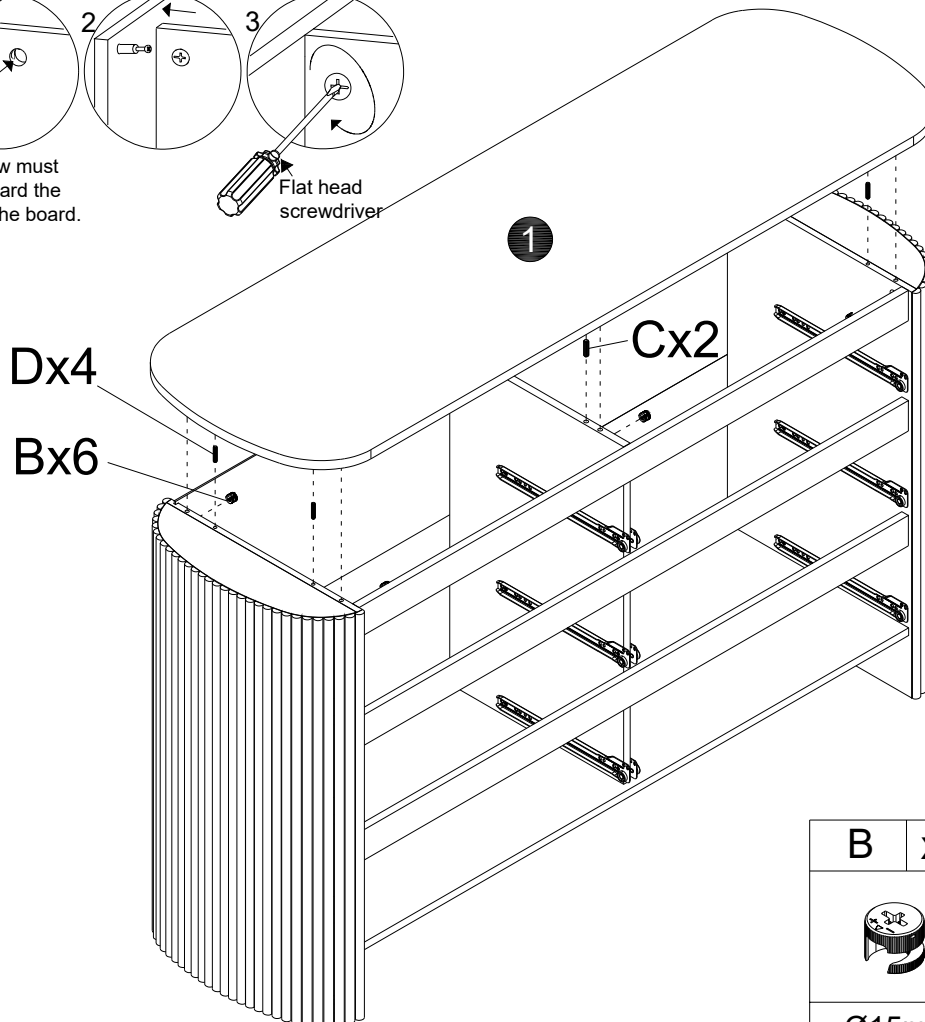
A	x6	H	x2	I	x4
					
M6x35mm				M3.5x14mm	


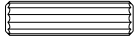

12



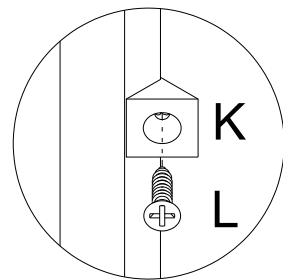
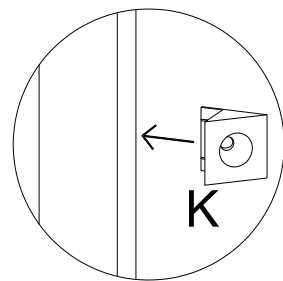
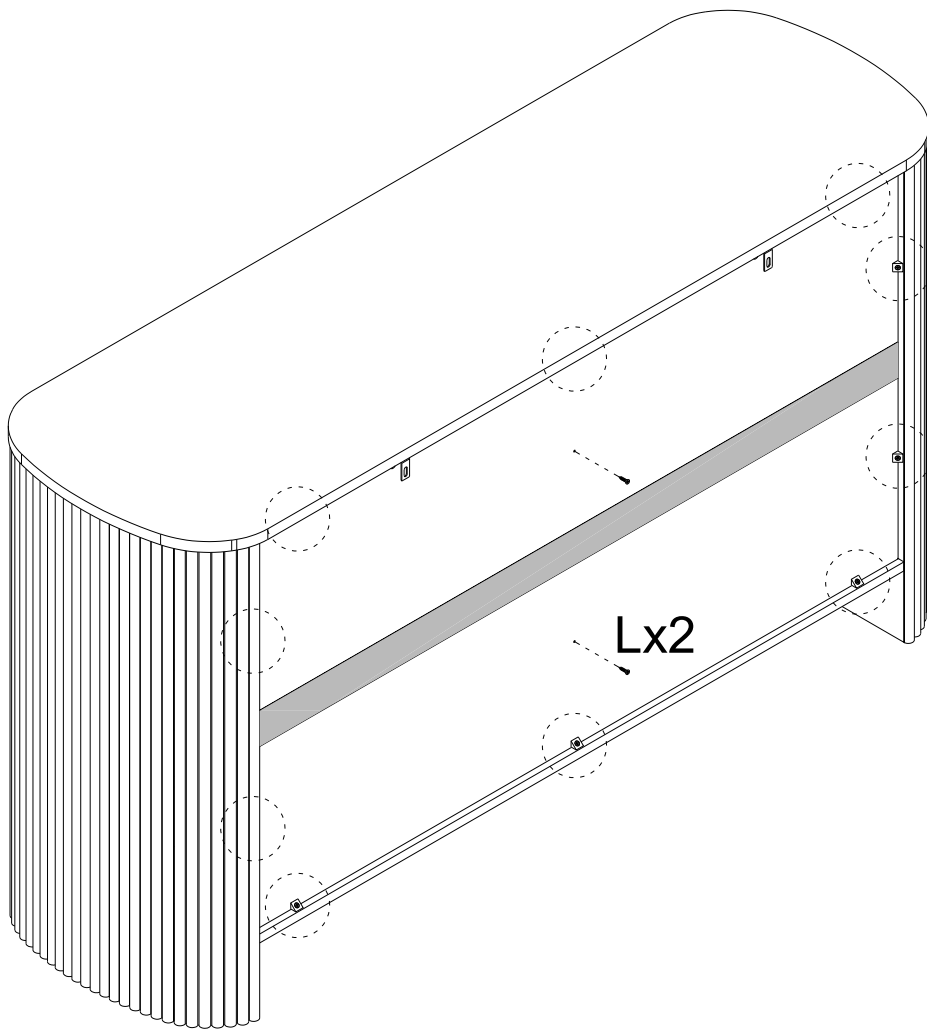
The arrow must point toward the edge of the board.



Flat head screwdriver



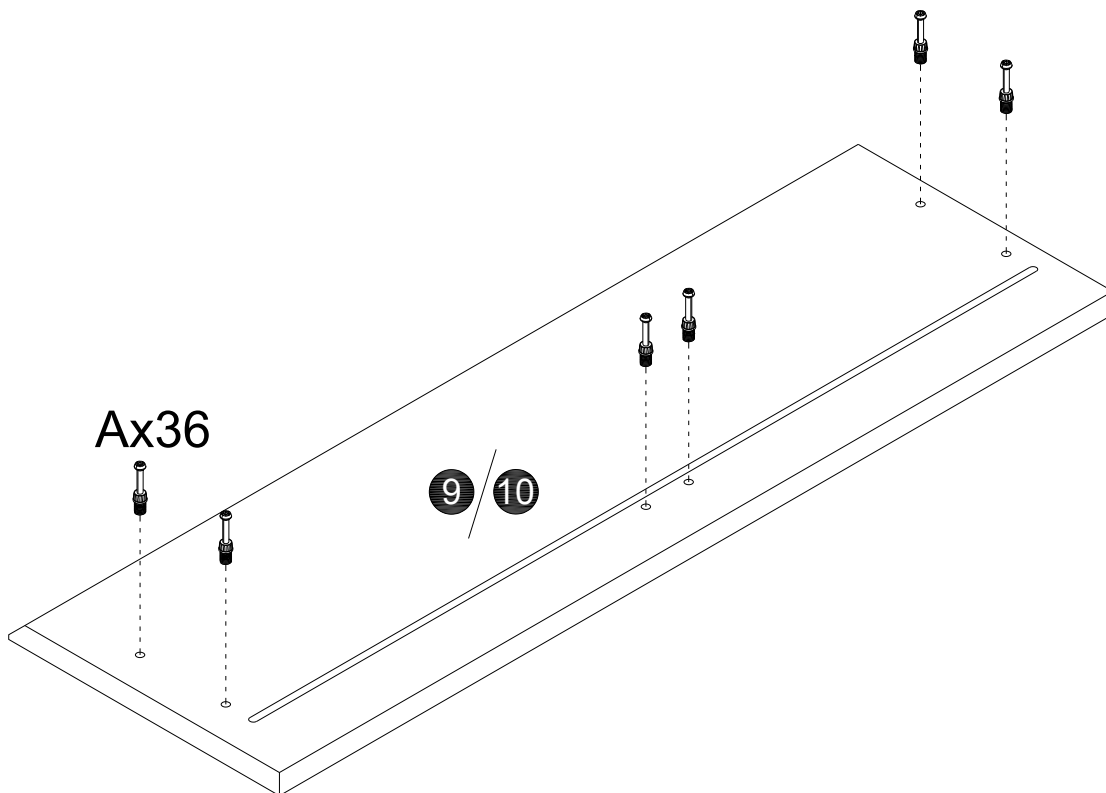
B	x6	C	x2	D	x4
					
Ø15mm		Ø8x30mm		Ø6x30mm	

13




K	x10	L	x12
			
M3.5x16mm			

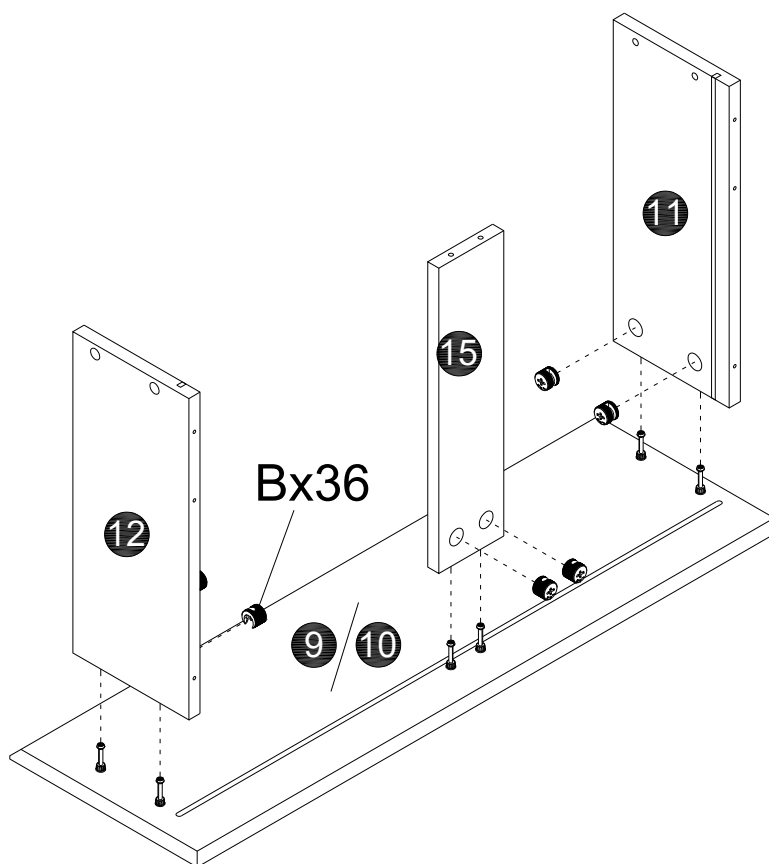
14



x6

A	x36
	
M6x35mm	

15



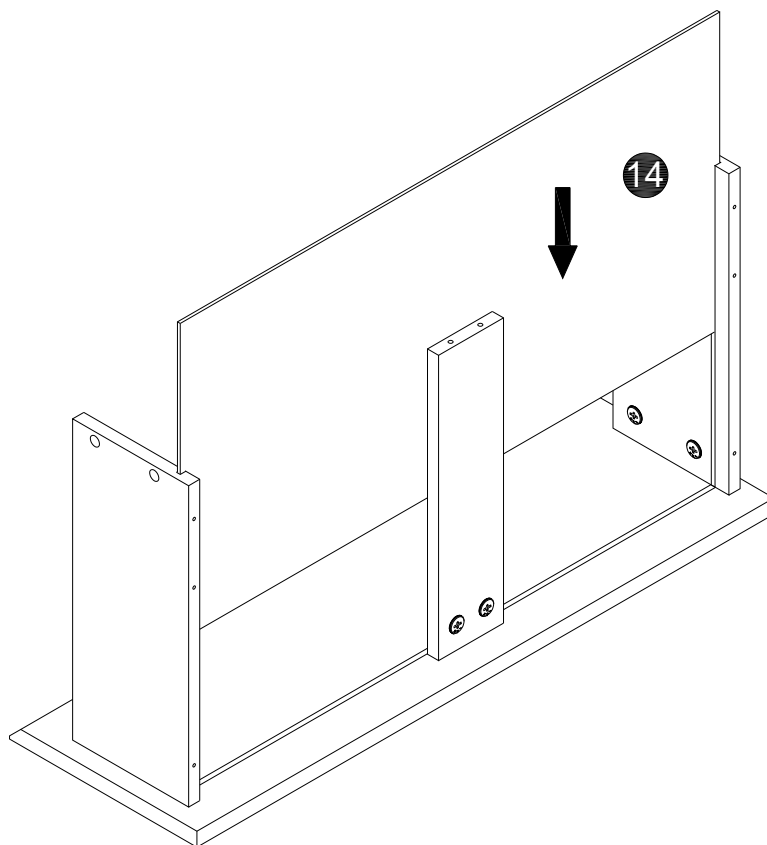
x6

B x36



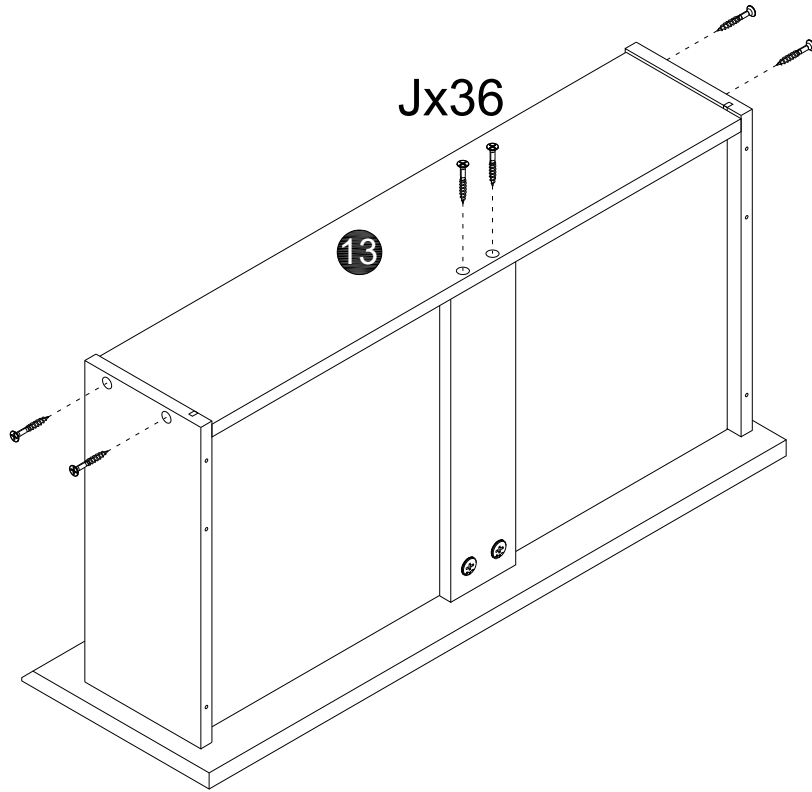
Ø15mm

16



x6

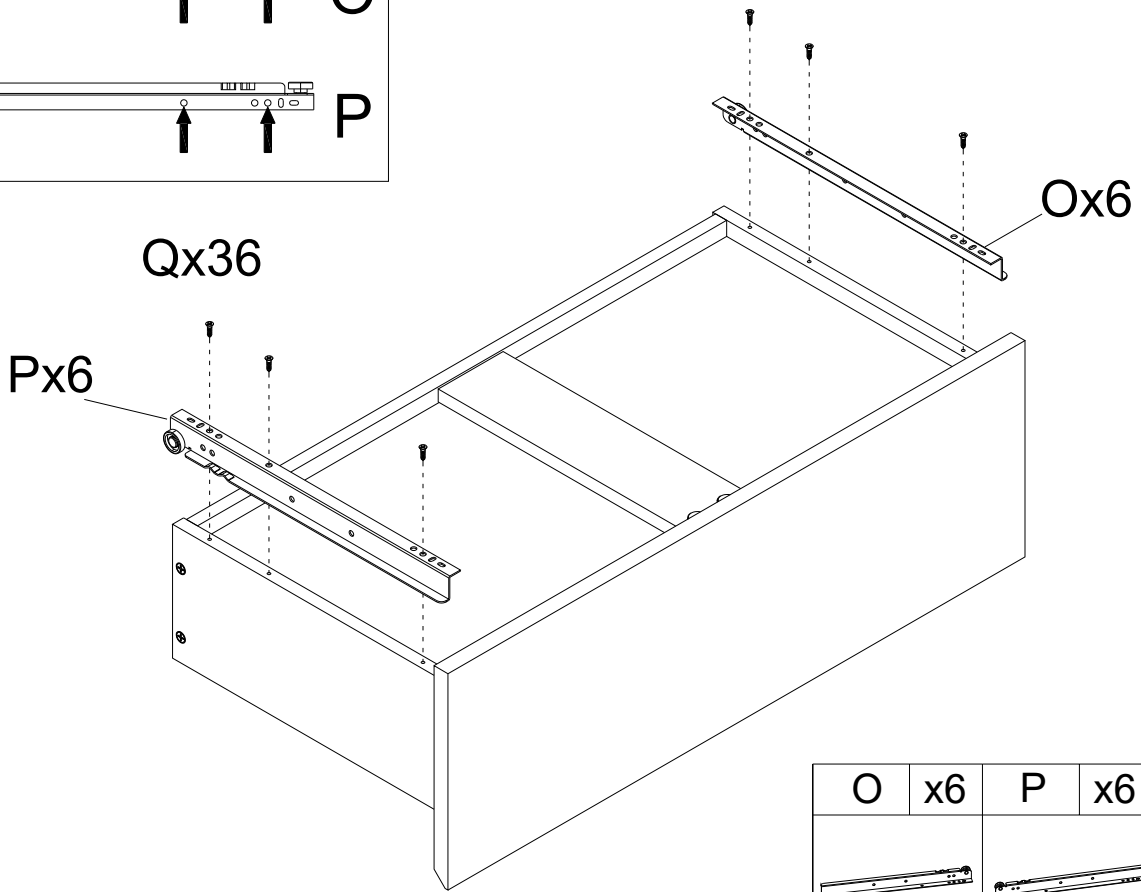
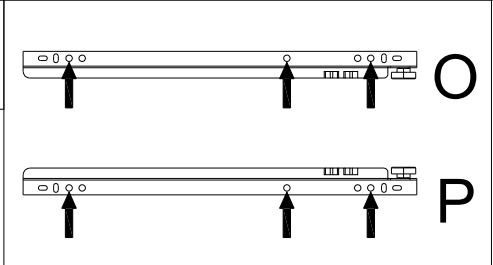
17



x6

J	x36
M5x38mm	

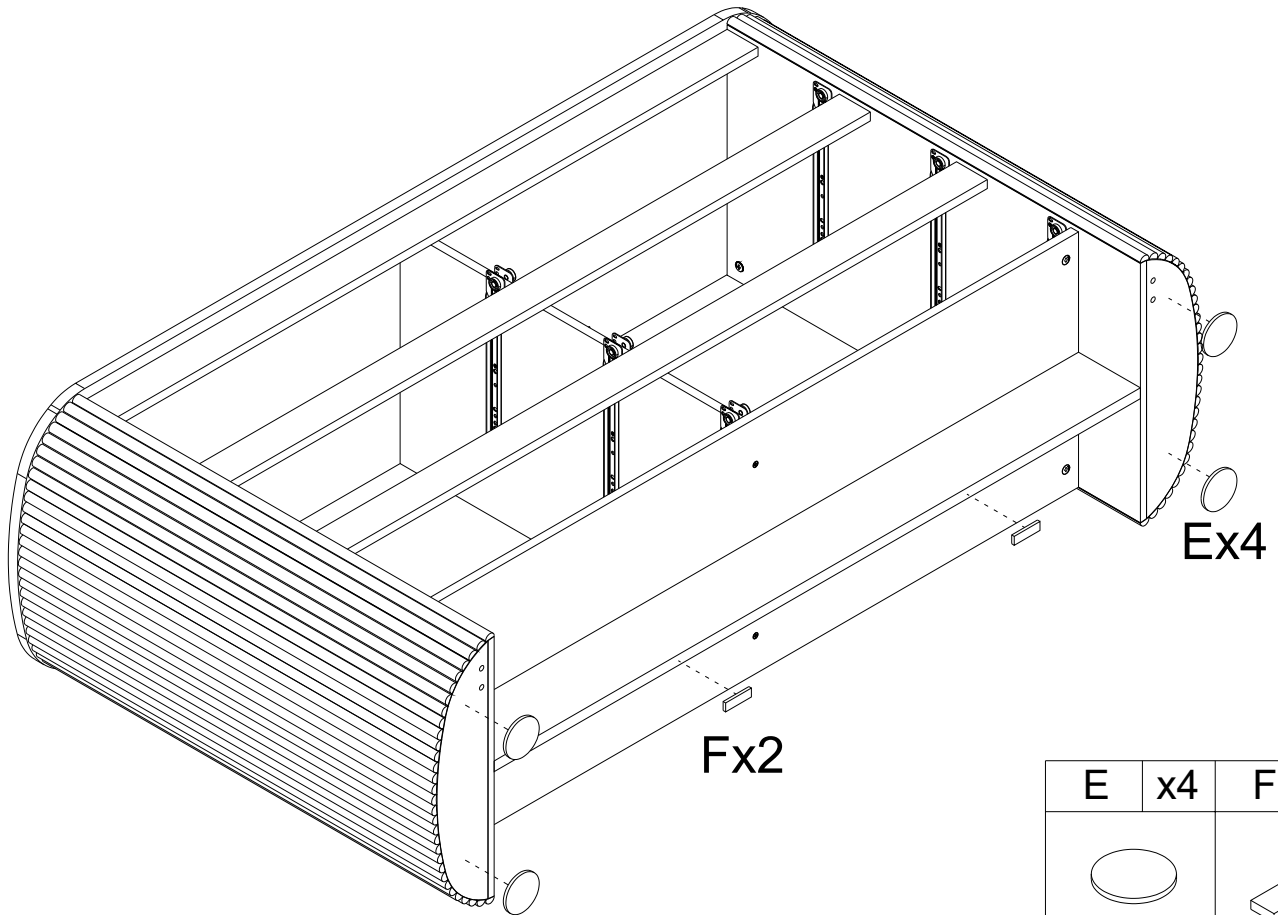
18



x6

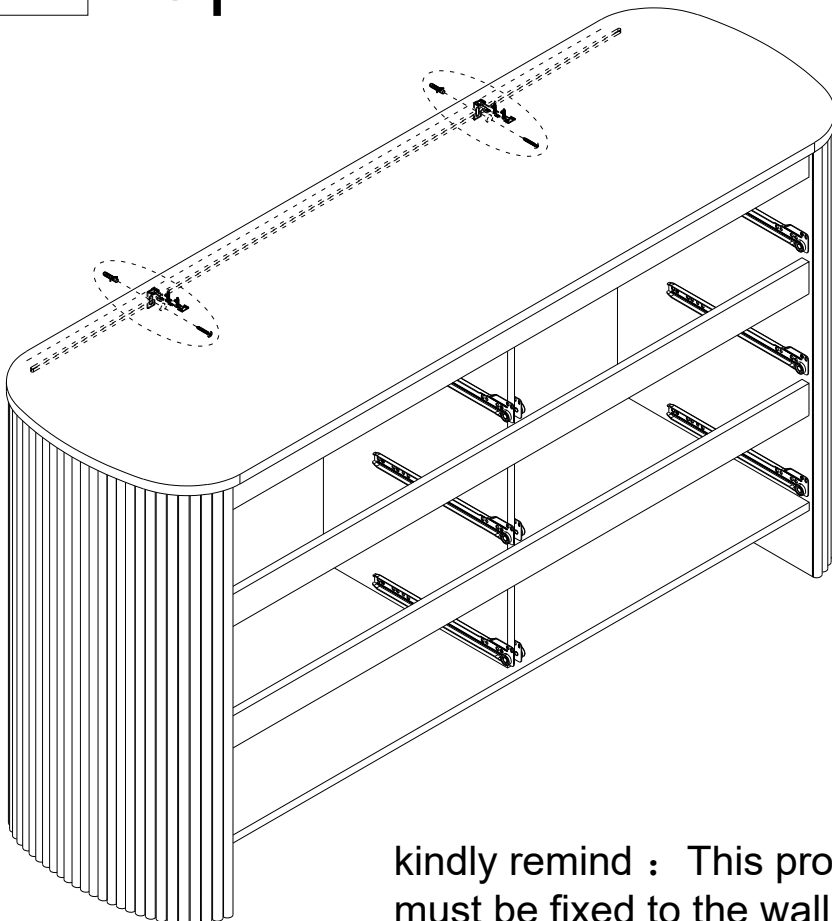
O	x6	P	x6	Q	x36
12"		12"		M3.5x12mm	

19

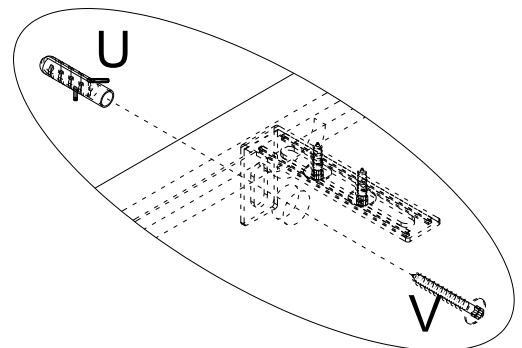


E	x4	F	x2
Ø65x5mm		50x15x5	

20 Option 1



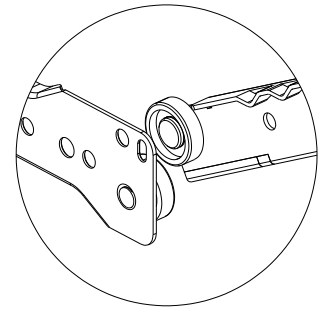
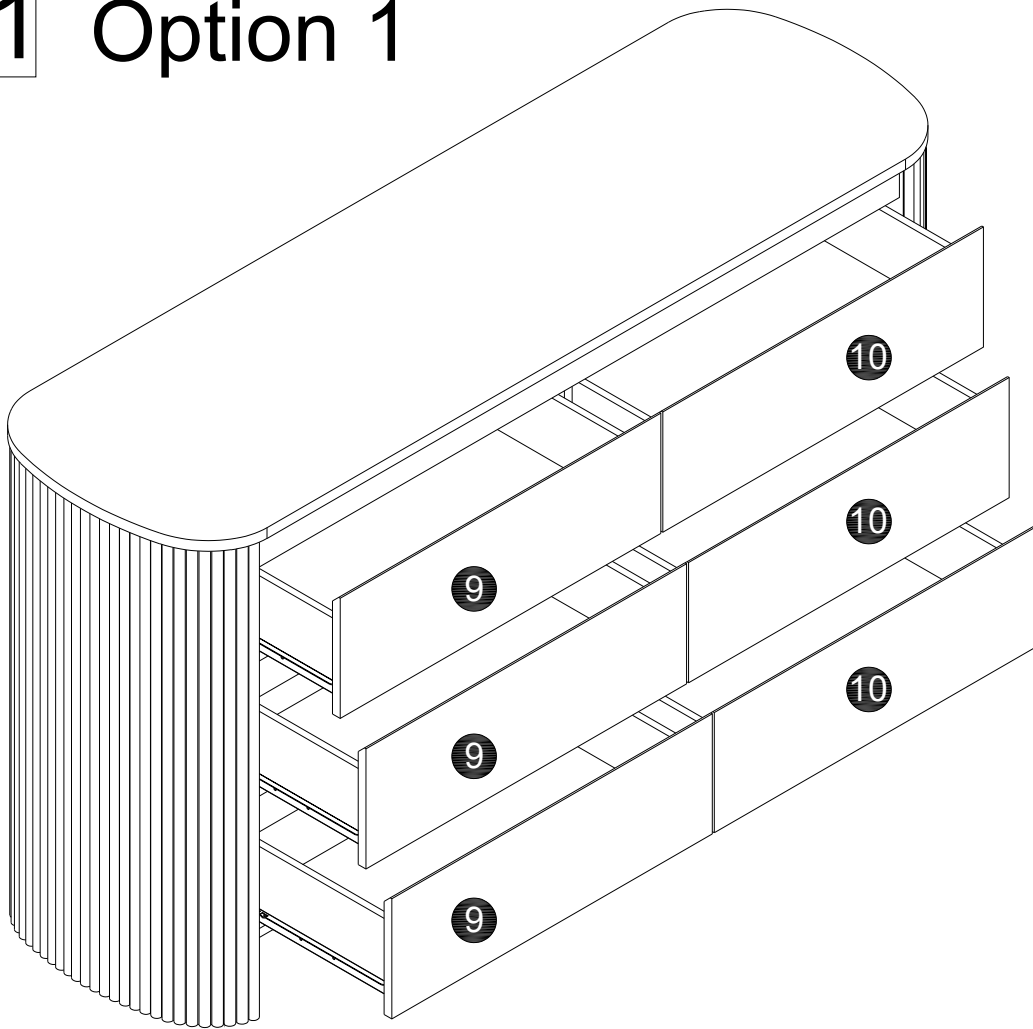
<p>WALL</p> <p>1 x2</p>	<p>WALL</p> <p>drilling hole Ø6*30mm</p> <p>2 x2</p>	<p>WALL</p> <p>Ux2</p> <p>3 x2</p>
-------------------------	----------------------------------------------------------	------------------------------------



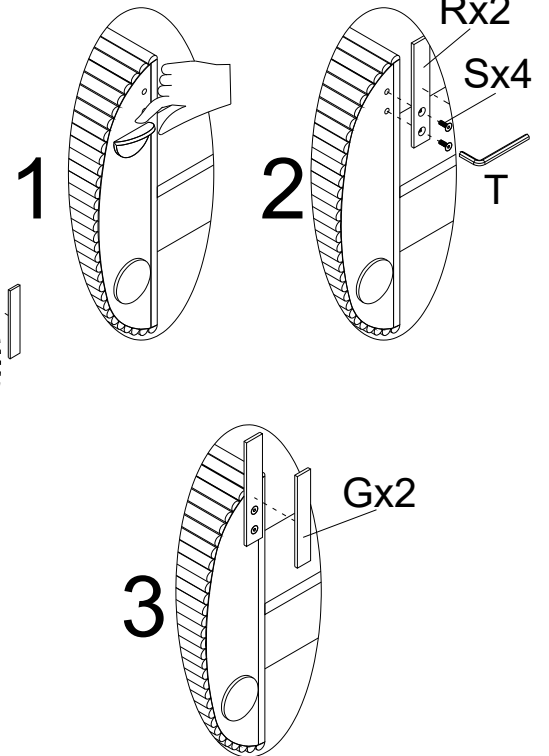
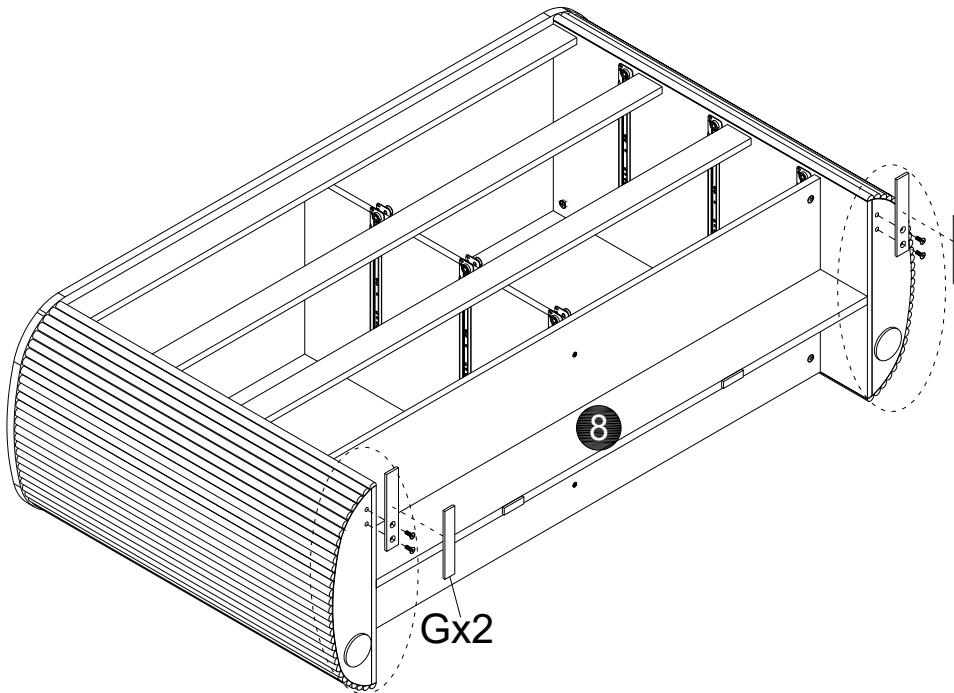
U	x2	V	x2
		M5x38mm	

kindly remind : This product must be fixed to the wall before use.

21 Option 1



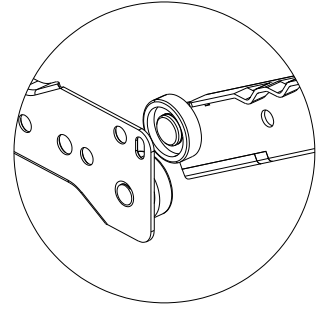
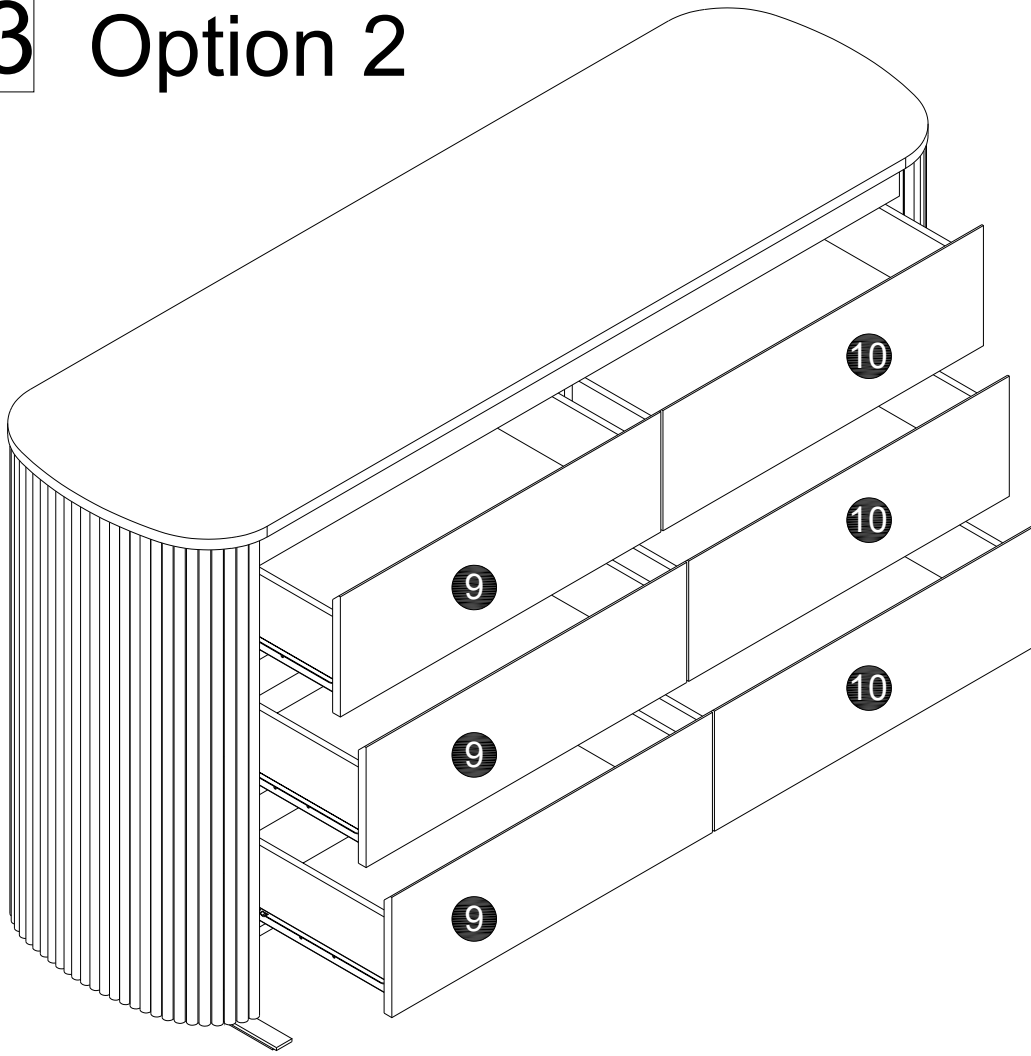
22 Option 2



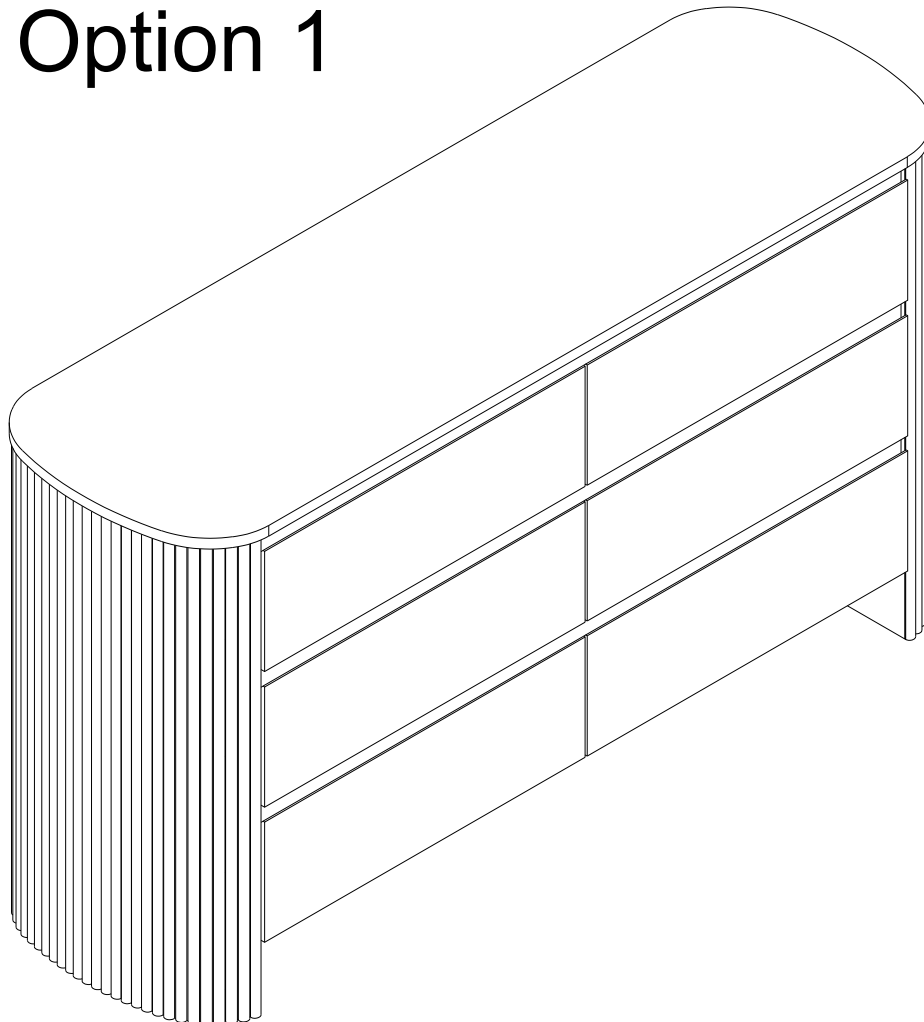
If your usage environment does not support the installation of wall connectors, please be sure to install the anti-forward-tilt stabilizing iron plate.

G	x2	R	x2	S	x4	T	x1
160x25x5		170x30x5		M6x16mm		M4x21x57	

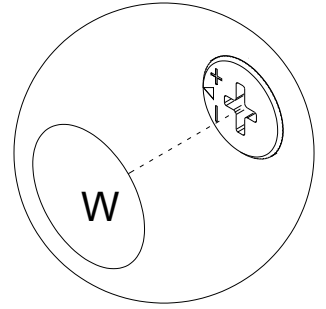
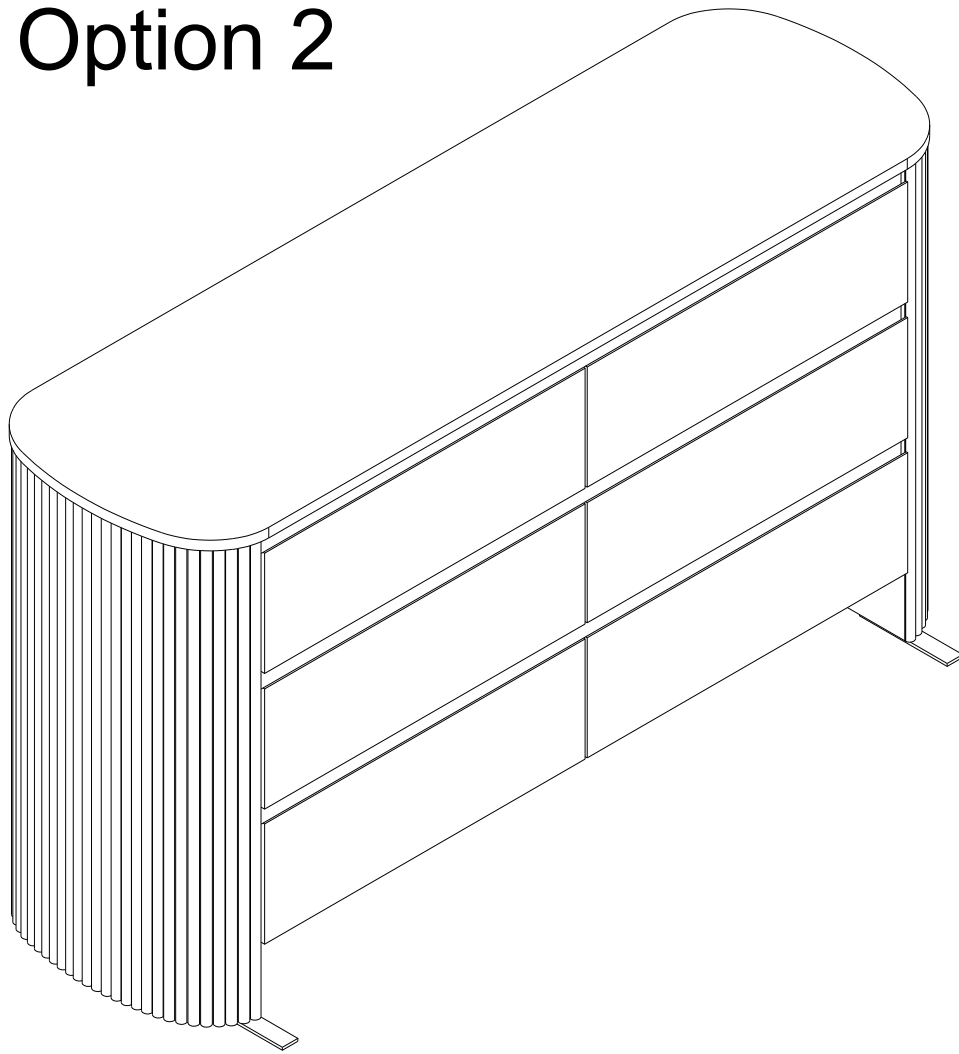
23 Option 2

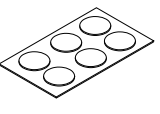


24 Option 1



25 Option 2



W	x7
	
Ø25	

26