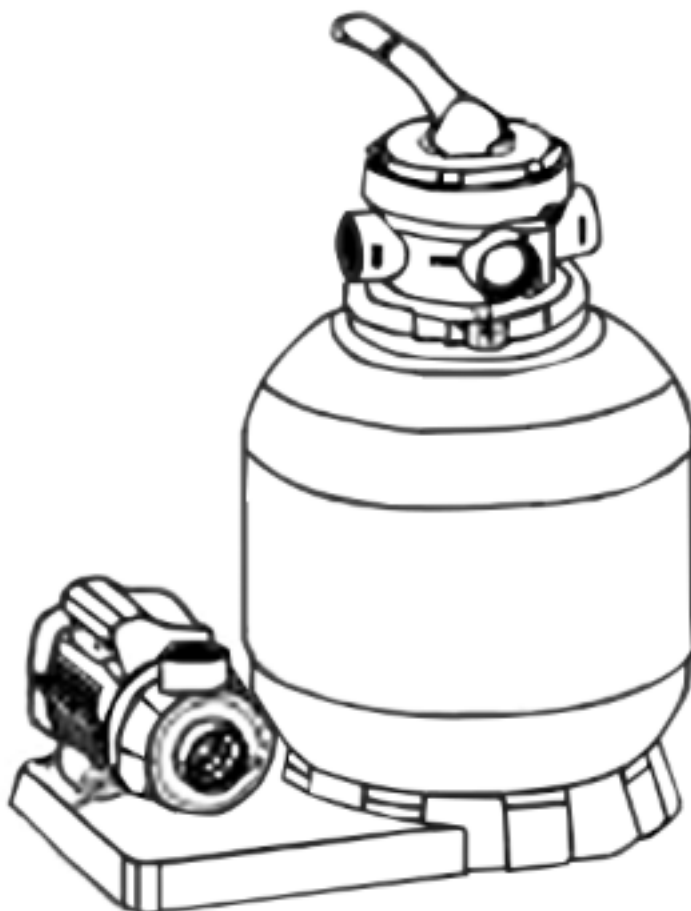




3/4HP POOL SAND FILTER W/ PUMP

ITEM # 75110



OWNER'S MANUAL AND SAFETY INSTRUCTIONS

SAVE THIS MANUAL. KEEP THIS MANUAL FOR SAFETY WARNINGS, PRECAUTIONS, ASSEMBLY, OPERATION, INSPECTION, MAINTENANCE AND CLEANING PROCEDURES. WRITE THE PRODUCT'S SERIAL NUMBER ON THE BACK OF THE MANUAL, OR THE MONTH AND YEAR OF PURCHASE IF PRODUCT HAS NO SERIAL NUMBER

FOR QUESTIONS, PLEASE CALL CUSTOMER SERVICE: 909.628.0880

SAFETY INFORMATION

WARNING

Read all safety warnings and instructions. Failure to follow the warnings and instructions may result in injury and/or property damage. Save all warnings and instructions for future reference.

The warnings, precautions, and instructions discussed in this instruction manual cannot cover all possible conditions and situations that may occur. It must be understood by the operator that common sense and caution are factors which cannot be built into this product, but must be supplied by the operator.

- The sand filters are designed to work with water at temperature >than 0°C and <than 45°C. Do not operate the filter outside of these temperatures or damage may occur.
- The installation should be carried out in accordance to the safety instructions of swimming pools and the specific instructions for each facility.
- Make sure installation is carried out by qualified authorized persons and that these persons have first carefully read the following instructions. Incorrectly installed equipment may fail, causing severe injury or property damage.
- The operating safety of the filter is only guaranteed if the installation and operation instructions are correctly followed.
- To reduce the risk of injury, do not permit children to use this product.
- Chemical spills and fumes can weaken Swimming Pool/ Spa. Corrosion can cause filters and other equipment to fail, resulting in severe injury or property damage. Do not store pool chemicals near your equipment.
- Any modification of the filter requires the prior consent from the supplier's original replacement parts and accessories authorized by the manufacturer ensure a high level of safety. The supplier assumes no liability for the damage and injuries caused by unauthorized replacement parts and accessories.
- In the event of defective operation or fault, contact the supplier or its nearest authorized service agent.

SAVE THESE WARNINGS.

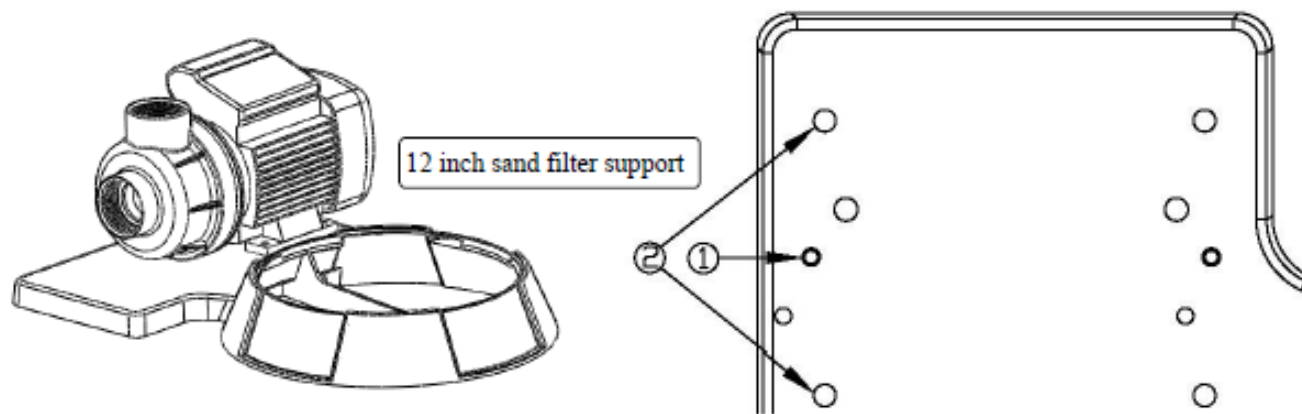
INSTALLATION

PRIOR TO INSTALLATION:

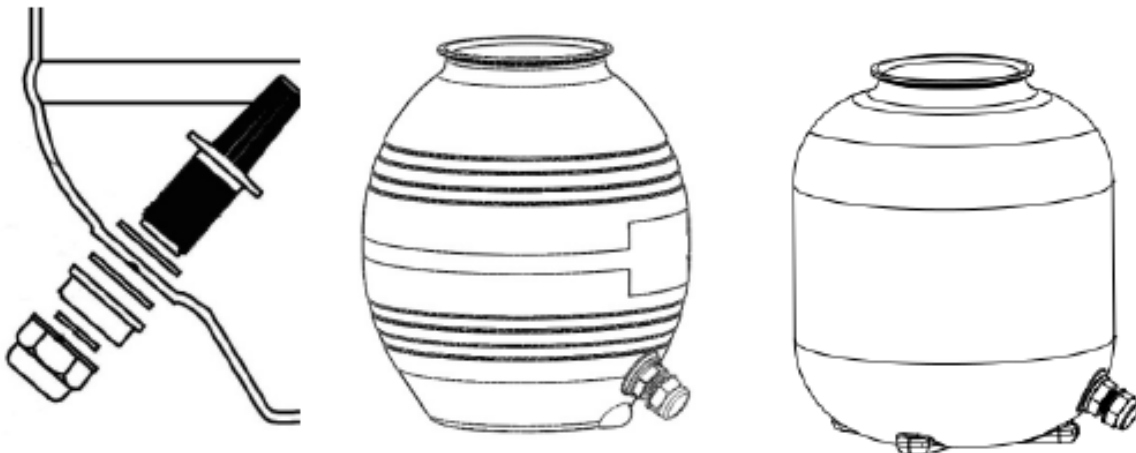
1. Position the filter as close to the Swimming Pool/ Spa as possible.
2. The filter should be placed on a level concrete slab, very firm ground, or equivalent. Ensure that the ground will not subside, preventing any strain from the attached plumbing.
3. Position the filter under consideration of the piping connections, so that it is convenient for operating and servicing.
4. Ensure that the compliance label is facing the front to allow easy identification in the case of service difficulties.

INSTALLATION

1. Mount the Pump to sand filter support by using bolts and nuts.

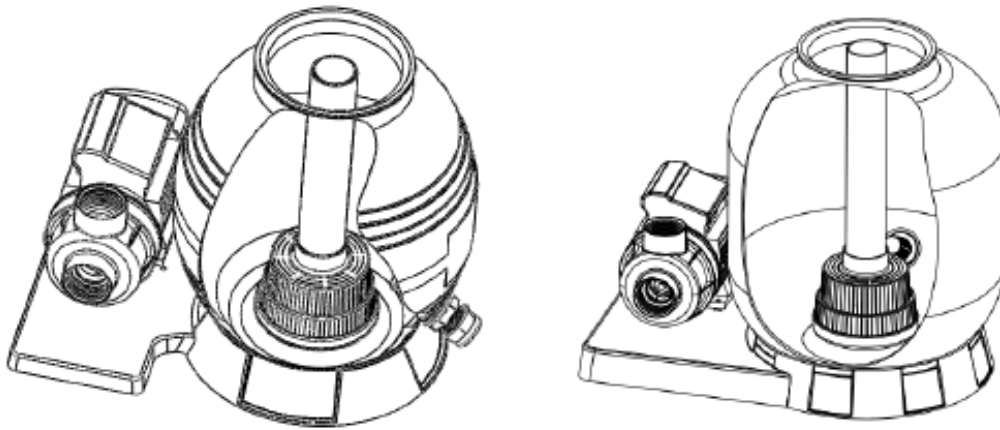


2. Install the drain plug assembly to sand tank as below pictures.

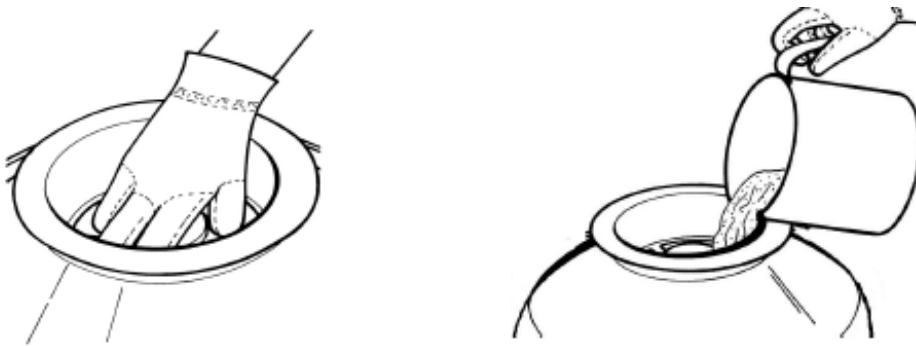


INSTALLATION

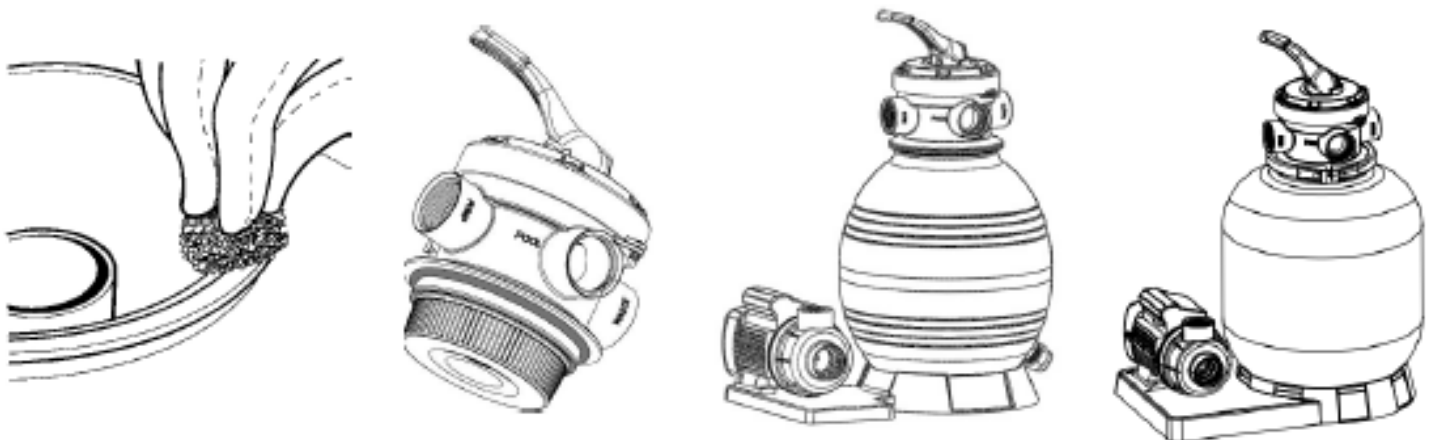
3. Press and turn the sand tank to mount it to sand filter support with correction direction (drain plug is at outside as below pictures).



4. Insert the tube with the diffuser body inside the tank as above picture, then place the funnel on the tank's mouth and pour the quartz sand into the tank (12 inch sand filter needs about 19kg sands to fill into the tank, 14 inch sand filter needs about 27kg sands to fill into the tank).



5. Take away the funnel, and then please make sure tank's neck is very clean. Put the O-ring on the valve and use clamp to fix the valve with tank (the direction of "PUMP" port on valve needs to face pump out port).



6. Connect the sand tank to pump with hose, hose clamps and hose adaptors



INSTALLATION NOTES:

1. Make sure the filter is worked under the work pressure, and using a pressure control valve when the system using a booster pump.
2. If the pump position is higher than the water level, it requires to install the back water control valve.
3. If the pump position is lower than the water level, it requires installing an isolation valve. It could stop the water return back when people do the general inspection.
4. Reducing the connect adaptors and hose connecting bending as less as possible. Decreasing the water flow scrub, it could reach the maximum effective.
5. Ensure solvents are not excessively applied to fittings as this could run into O-ring and create sealing problems.
6. Do not over tighten fittings or adapters..

OPERATION

1. Inspect all the connections have been made correct and are secure.
2. Depress top mount valve handle and rotate to BACKWASH position.
3. Prime and start pump according to pump instructions.

NOTE: ALL SUCTION AND DISCHARGE VALVES MUST BE OPENING WHEN STARTING THE SYSTEM. FAILURE TO DO SO COULD CAUSE SEVERE PERSONAL INJURY. MAKE SURE THE FILTER VESSEL ARE FULL FILL THE WATER BEFORE START UP THE PUMP OR IT WILL CAUSE THE PUMP DAMAGED.

4. Once water flow is steady out the waste line, run the pump for at least 2 minutes. The initial back-washing of the filter is recommended to remove any impurities of fine sand particles in the sand media.
5. Turn pump off and set valve to RINSE position. Start pump and operate until water in sight glass is clear----about 1/2 to 1 minute. Turn pump off, set valve to FILTER position and restart pump. Your filter is now operating in the normal filter mode, filtering particles from the pool water.

OPERATION

1. Note the initial pressure gauge reading when the filter is clean. (it will vary from pool depending upon the pump and general piping system). As the filter removes dirt and impurities from the pool water, the accumulation in the filter will cause the pressure to rise and flow to diminish. When the pressure gauge reading is 8-10 PSI(0.55-0.69 BAR) higher than the initial “clean” pressure you noted, it is the time to backwash (clean) the filter.

IMPORTANT: To prevent unnecessary strain on piping system and valving, always shut off pump before switching filter control valve position.

3. To prevent damage to the pump and filter and for proper operation of the system, clean pump strainer and skimmer baskets regularly.

FILTER CONTROL VALVE FUNCTIONS:

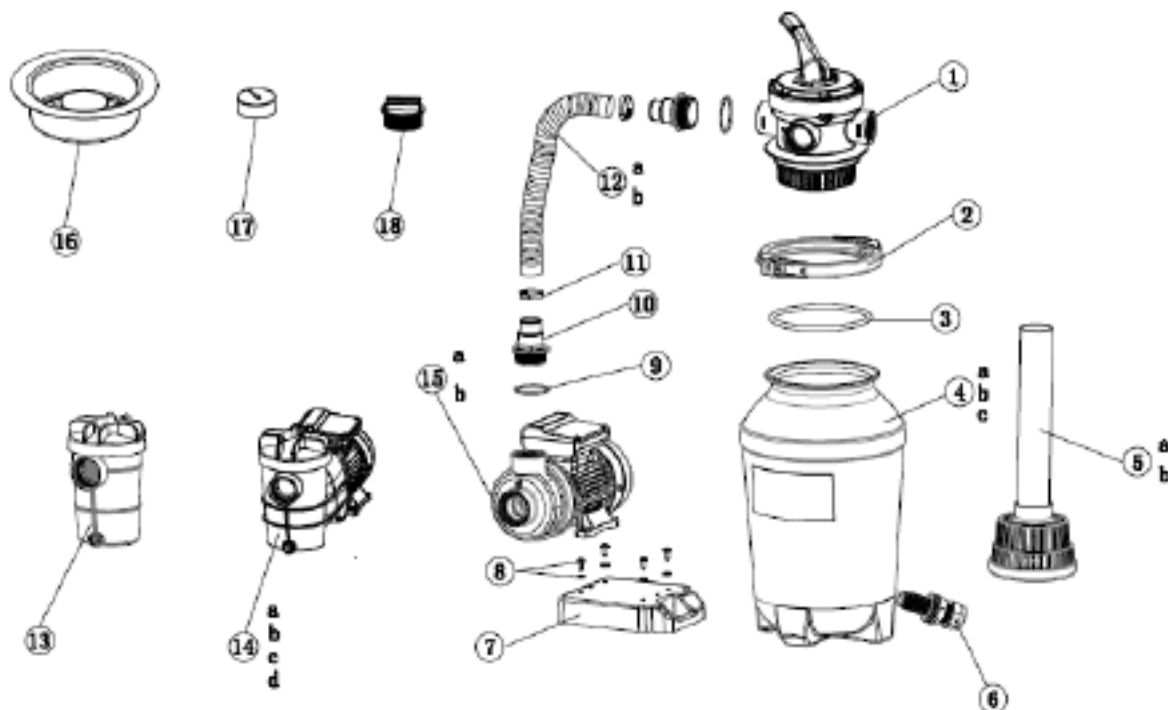
FILTER - Set valve to FILTER for normal filtering. Also use for regular vacuuming.

BACKWASH – For cleaning filter. When filter pressure gauge rises 8-10 PSI (0.55-0.69 BAR) above start-up (clean pressure): Stop the pump, set valve to BACKWASH. Start pump and backwash until water in sight glass is clear. Approximately 2 minutes or less depending on dirt accumulation. Proceed to RINSE.

RINSE: After backwashing, with pump off, set valve to RINSE. Start pump and operate for about 1/2 to 1 minute. This ensures that all dirty water from backwashing is rinsed out of the filter to waste, preventing possible return to the pool. Stop pump, set valve to FILTER and start pump for normal filtering.

WINTER – For winterizing

PARTS INFORMATION



Ref. No.	Part No.	Description	QTY
1	647303071001	4-Way Valve	1
2	647303076	Flange clamp	1
3	65431041080	O-ring	1
4a	647302501	Filter Tank for 73025(10")	1
4b	647303101	Filter Tank for 73031(12.5")	1
4c	647303801	Filter Tank for 73038(15")	1
5a	647302571000	Filter Assembly for 73025 / 73031	1
5b	647303871000	Filter Assembly for 73038	1
6	647304073	Drain plug	1
7	647302502	sand filter support	1
8	65862062000	Screw ST5.5*25 and hose clamp $\Phi 18 \times \Phi 6.5 \times 1.5$	1
9	65431021080	O-ring	6
10	647303014	Hose Adaptor	5
11	65021004000	Hose Clamp	2
12a	65749017011	1 1/4" (32mm)*35cm hose for 72005/72205/72211/72011/72223/72023	1
12b	65749014011	1 1/4" (32mm)*45cm hose for 72225/72025	1
13	647251273000	Filtering barrel component for 72005002/72205002	1
14a	72715	0.35HP Pump (115V-60HZ) for 72211000/72223000	1
14b	72515	0.35HP Pump (230V-50HZ) for 72011000/72023000	1
14c	72721	0.5HP Pump(115V-60HZ) for 72225000	1
14d	72521	0.5HP Pump(230V-50HZ) for 72025000	1
15a	72712	0.25HP Pump(115V-60HZ) for 72205000	1
15b	72512	0.25HP Pump(230V-50HZ) for 72005000	1
16	65756006000	Neck Fitting	1
17	97202	Pressure gauge	1
18	91215	Plug W/o-ring 1 1/2" MIP	1

DISCLAIMER

PLEASE READ THE FOLLOWING CAREFULLY

THE MANUFACTURER AND/OR DISTRIBUTOR HAS PROVIDED THE PARTS LIST AND ASSEMBLY DIAGRAM IN THIS MANUAL AS A REFERENCE TOOL ONLY. NEITHER THE MANUFACTURER OR DISTRIBUTOR MAKES ANY REPRESENTATION OR WARRANTY OF ANY KIND TO THE BUYER THAT HE OR SHE IS QUALIFIED TO MAKE ANY REPAIRS TO THE PRODUCT, OR THAT HE OR SHE IS QUALIFIED TO REPLACE ANY PARTS OF THE PRODUCT. IN FACT, THE MANUFACTURER AND/OR DISTRIBUTOR EXPRESSLY STATES THAT ALL REPAIRS AND PARTS REPLACEMENTS SHOULD BE UNDERTAKEN BY CERTIFIED AND LICENSED TECHNICIANS, AND NOT BY THE BUYER. THE BUYER ASSUMES ALL RISK AND LIABILITY ARISING OUT OF HIS OR HER REPAIRS TO THE ORIGINAL PRODUCT OR REPLACEMENT PARTS THERETO, OR ARISING OUT OF HIS OR HER INSTALLATION OF REPLACEMENT PARTS THERETO.

Record Product's Serial Number Here: _____

Note: If product has no serial number, record month and year of purchase instead.

Note: Some parts are listed and shown for illustration purposes only and are not available individually as replacement parts.

The material in this manual is for informational purposes only. The product(s) it describes are subject to change without prior notice, due to the manufacturer's continuous development program. XtremePowerUS makes no representations or warranties with respect to this manual or with respect to the products described herein. XtremePowerUS shall not be liable for any damages, losses, costs or expenses, direct, indirect or incidental, consequential or special, arising out of, or related to the use of this material or the products described herein.

Questions, issues or missing parts?

Before returning to your retailer, our customer service team is here to help.



Call Us: 909.628.0880

Email Us: customer@xtremepowerusa.com

Hours of Operation: 9am - 3pm PST Monday - Friday

MADE IN CHINA