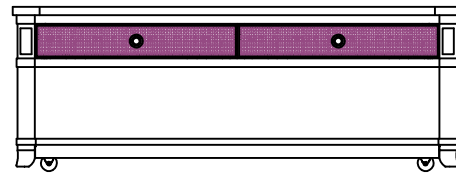


# ASSEMBLY INSTRUCTIONS

483-910



## TOOLS REQUIRED:

Allen Wrench (supplied, part # E)

## BEFORE YOU START:

1. Check the parts against the parts list to make sure all items are present.
2. Assemble your furniture on a soft, flat surface to avoid scratching the finish.
3. CAUTION: Do not over tighten screws, nuts or bolts during assembly.
4. Your furniture may require occasional tightening.

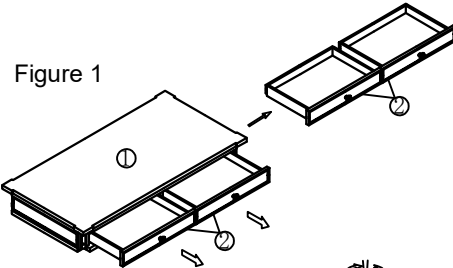


Figure 1

## INSTRUCTIONS:

1. Pull out the drawer (2) of the upper top panel (1). As shown in Figure 1.
2. Turn the table top on the smooth and clean soft surface.
3. Attach four posts (3) to the top, using Bolt (A), Lock Washer (B), Flat Washer (C) and tighten with Allen Wrench (E). As shown in Figure 2 (STEP 1).
4. Put the bottom shelf (4) onto the posts.
5. Attach four casters (5) to the bottom shelf, using Bolt (D), Lock Washer (B), Flat Washer (C) and tighten with Allen Wrench (E). As shown in Figure 2 (STEP 2).
6. Turn the table up after assembled. Attach drawer to the upper top panel. Tighten all bolts before using it. As shown in Figure 3.

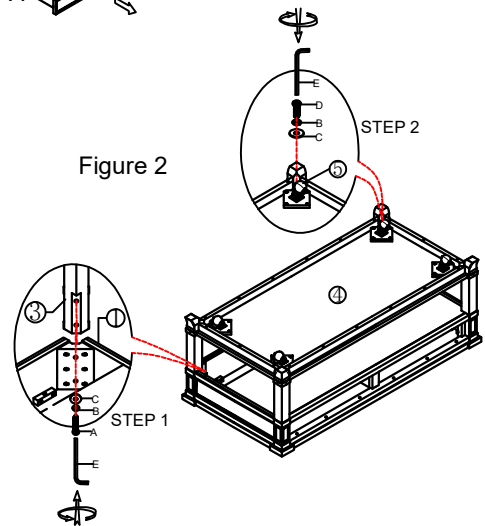


Figure 2

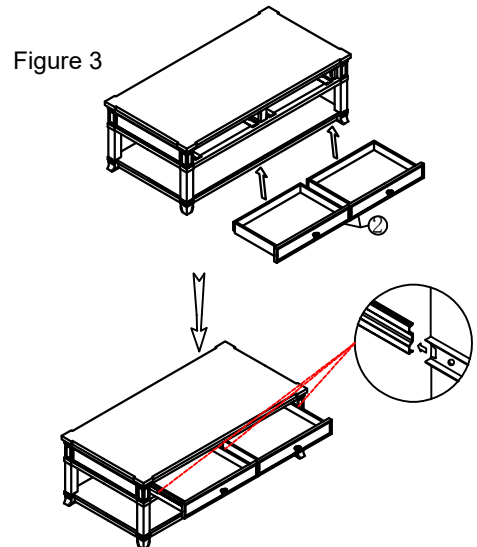







Figure 3

| NO | DRAWING   | DESCRIPTION  | SIZE        | Q'ty  |
|----|---|--------------|-------------|-------|
| A  |  | Bolt         | 5/16"x2"    | 8pcs  |
| B  |  | Lock washer  | Ø5/16"      | 12pcs |
| C  |  | Flat washer  | Ø5/16"x3/4" | 12pcs |
| D  |  | Bolt         | 5/16"x3/4"  | 4pc   |
| E  |  | Allen Wrench | 100*50*4mm  | 1pc   |